

## Appendix B

### Record Drawings

	Page
Introduction .....	B-1
Medical Center A	
First Floor Key Plan.....	B-3
First Interstitial Key Plan.....	B-4
Third Floor Key Plan.....	B-5
Third Interstitial Key Plan .....	B-6
Allocation of Interstitial Space-Typical.....	B-7
Typical Interstitial Space Composite Sections .....	B-8
Interstitial Space Details and Sections .....	B-9
First Floor Interstitial Plan Area A	
Power, Lighting and Communications.....	B-10
Typical Interstitial Space Composite Plan .....	B-11
Medical Center B	
Basement Floor Composite Plan.....	B-12
Interstitial Zoning and Services Arrangement .....	B-13
Basement S-3 Level Interstitial Plan .....	B-14
First Floor S-3 Level Interstitial Plan .....	B-15
Fourth Floor S-3 Level Interstitial Plan .....	B-16
Interstitial Typical Details.....	B-17
Medical Center C	
Building Gross Section .....	B-18
Typical Interstitial Space Comp. Plan & Section .	B-19
Partial Interstitial Floor Plan – West .....	B-20
Pneumatic Tubes / ABC Riser Diagram	
& Schedule .....	B-21

This page intentionally left blank.

## **Introduction**

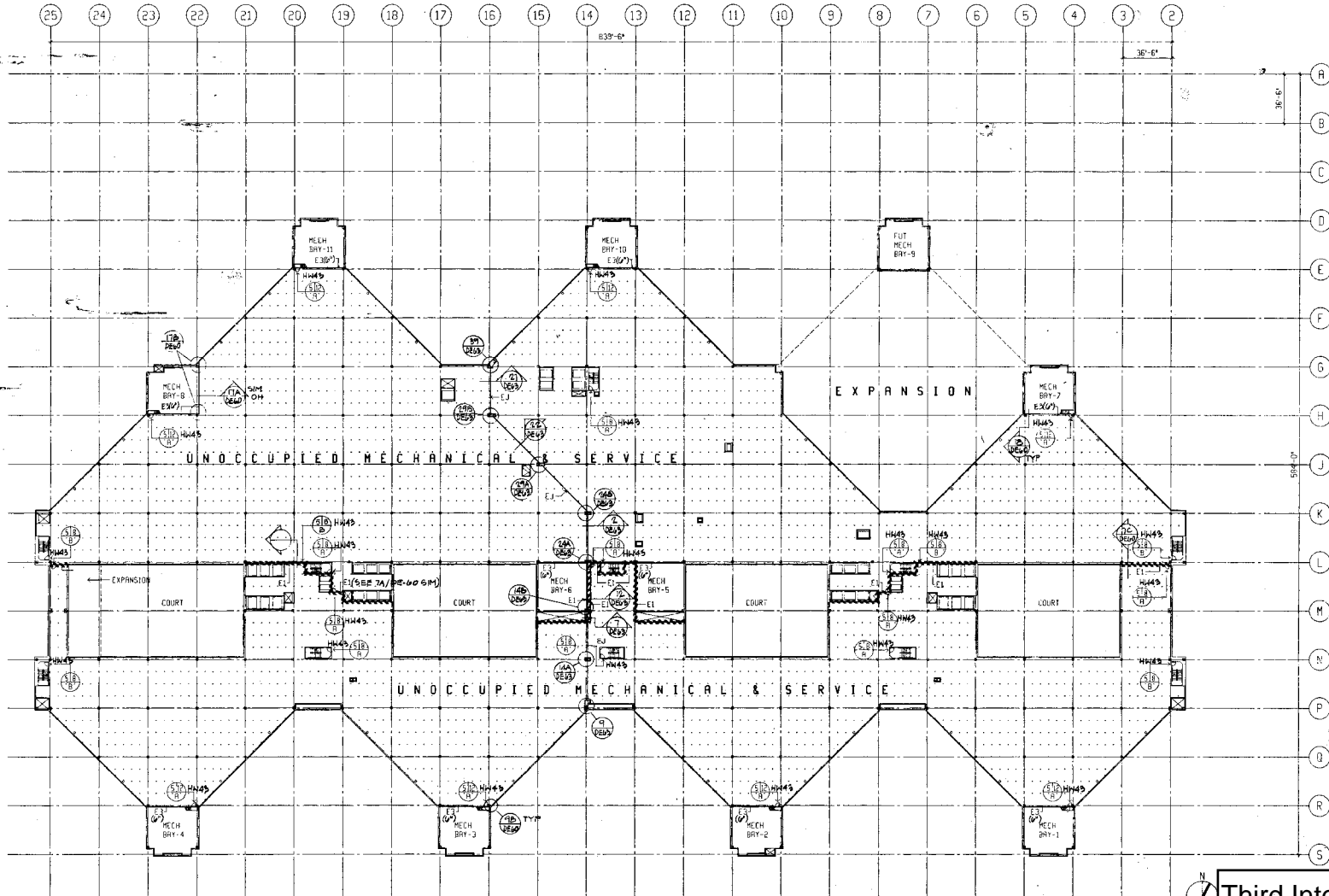
The following documents were obtained during the field surveys of the example Medical Centers. They are included with this Supplement as examples of some of the information provided in the construction documents of previous projects to illustrate the VAHBS concept to the Contractor.

This page intentionally left blank.







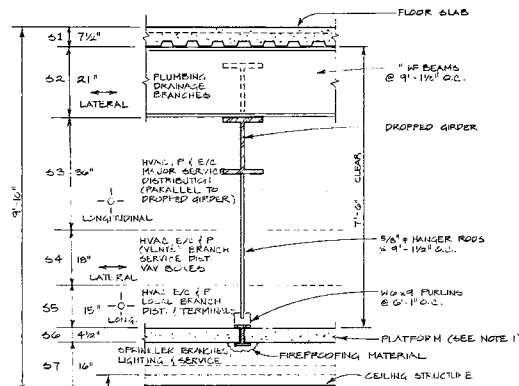


SHEEP NOTES  
 1. SEE GENERAL INTERSTITIAL NOTES, DRAWING 100-2.

 Third Interstitial Key Plan B-6

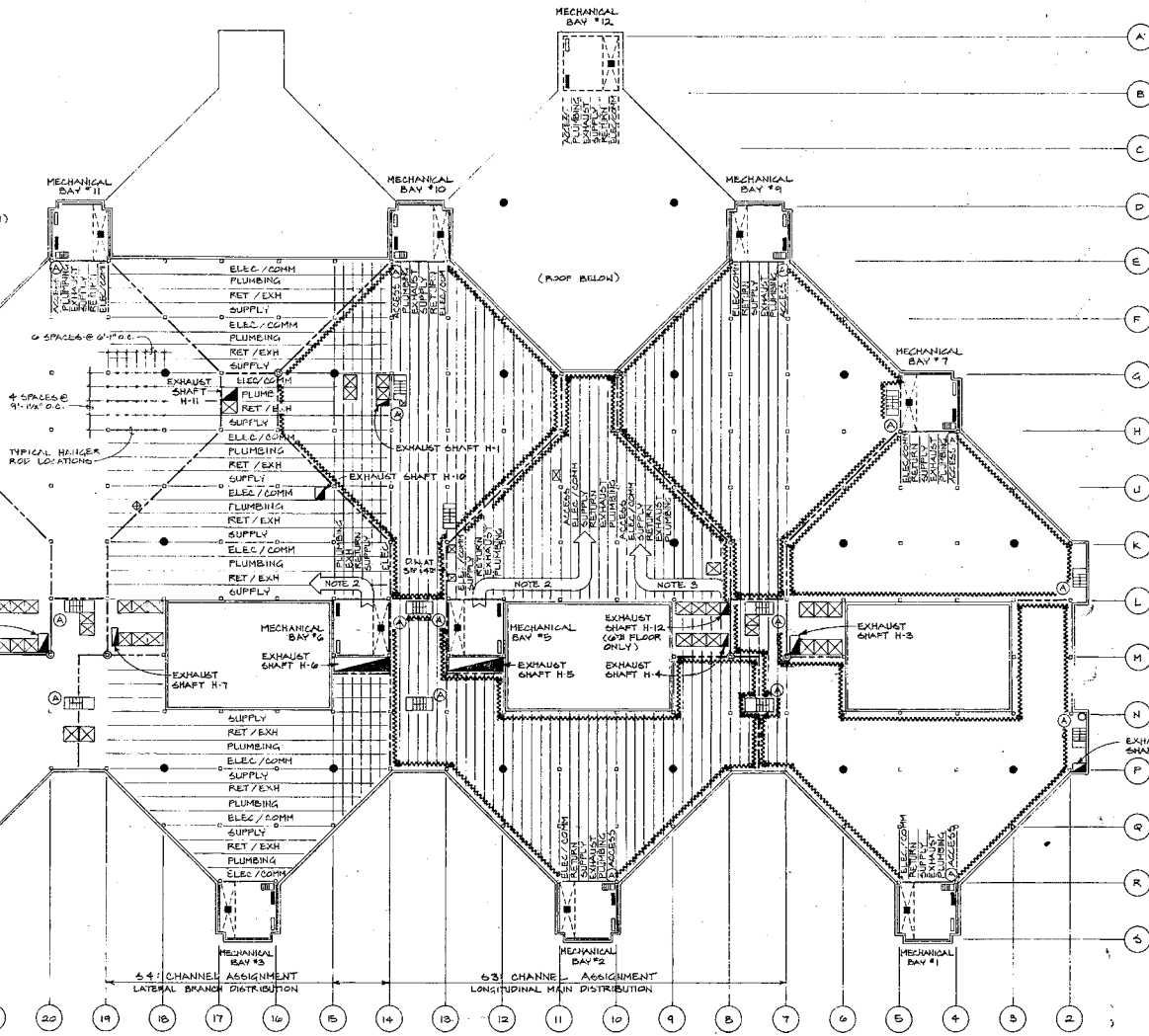
1/8" = 1'-0" (VERTICAL)  
 1/8" = 1'-0" (HORIZONTAL)  
 1/8" = 1'-0" (VERTICAL)  
 1/8" = 1'-0" (HORIZONTAL)  
 1/8" = 1'-0" (VERTICAL)  
 1/8" = 1'-0" (HORIZONTAL)  
 1/8" = 1'-0" (VERTICAL)  
 1/8" = 1'-0" (HORIZONTAL)





**SECTION**  
SCALE: 3/4" = 1'-0"

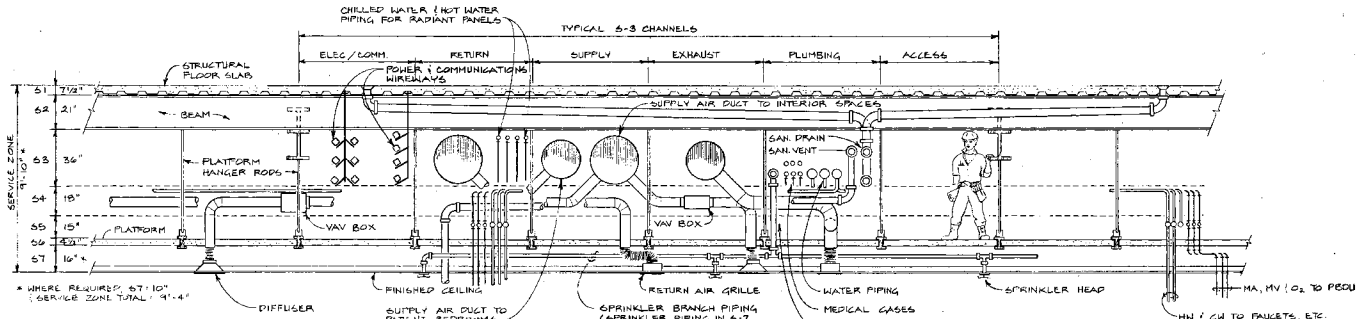
**NOTES:**  
1. EXCEPTIONS TO CEILING / PLATFORM HEIGHTS OCCUR AT SURGERY, CHAPEL, MAIN LOBBY, AUDITORIUM & OTHER SPECIAL ROOMS... REFER TO ARCHITECTURAL & STRUCTURAL PLANS.



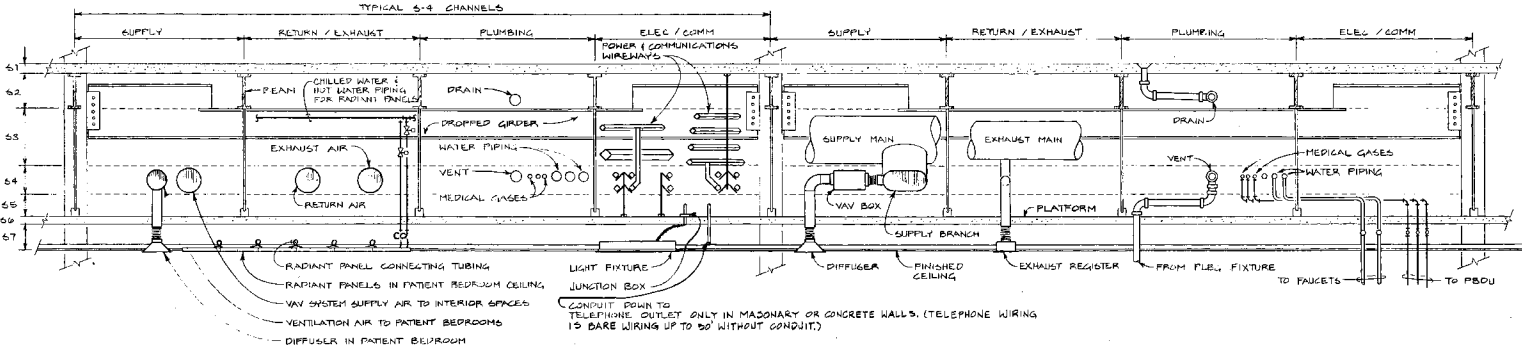
- LEGEND**
- EXHAUST DUCT SHAFT
  - ELEC / COMM RISER
  - ▬ PLUMBING PIPING RISER IN MECHANICAL BAY
  - ▬ HVAC PIPING RISER IN MECHANICAL BAY
  - ELEC / COMM SPACE WITHIN MECHANICAL BAY
  - PLUMBING SAN / VENT STACK
  - STORM DOWNSPOUT
  - STAIRWELL
  - SERVICE STAIR (TO INTERSTITIAL SPACE)
  - SERVICE MODULE BOUNDARY
  - ~ PERIMETER ACCESS AISLE
  - ⊙ ACCESS TO INTERSTITIAL SPACE FROM STAIRWELL OR SHIP'S LADDER
  - ⊠ ELEVATOR OR DUMBWATER SHAFT

- NOTES:**
1. ALL HVAC PIPING WILL BE LOCATED WITHIN DUCT CHANNELS.
  2. FOR SERVICE BAYS 5 & 6, THE DISTRIBUTION SYSTEM MAINS WILL RUN LATERALLY IN ZONES 5-2, 5-3, 5-4 TO CENTER BAY OF SERVICE MODULE.
  3. ON 5TH FLOOR, THE SUPPLY & RETURN DISTRIBUTION SYSTEM MAINS FOR RECOVERY AREA WILL BE RUN LATERALLY IN ZONE 5-2, 5-3, 5-4 TO RECOVERY AREA. THE AIR HANDLING UNIT SERVING RECOVERY AREA WILL BE LOCATED ON 6TH FLOOR ROOF.
  4. THIS PLAN DEPICTS 2ND FLOOR INTERSTITIAL; HOWEVER, THE ALLOCATION OF SPACE WITHIN THE INTERSTITIAL WILL BE TYPICAL FOR OTHER FLOORS.
  5. ACCESS AISLE ROUTINGS SHOWN ON THIS SHEET DEPICT TYPICAL LAYOUTS; REFER TO THE VAS & SALS INTERSTITIAL PLANS FOR EXACT ROUTINGS IN EACH AREA.

Allocation of Interstitial Space--Typical B-7

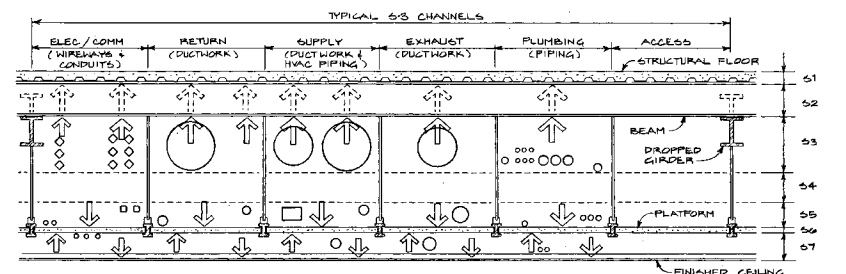


**A** TYPICAL SECTION  
SCALE: 3/8" = 1'-0"



**B** TYPICAL SECTION  
SCALE: 3/8" = 1'-0"

**Typical Interstitial Space Composite Sections B-8**



TYPICAL STRATEGY FOR SUPPORTING DISTRIBUTION IN 5-3, 5-5 & 5-7 SUBZONES  
SCALE: 3/8" = 1'-0"

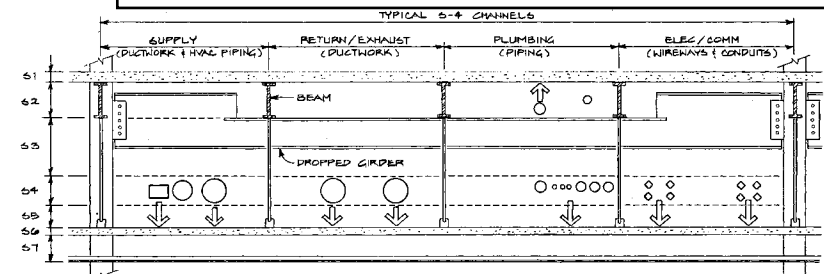
SUBZONE 5-2: SYSTEM ELEMENTS IN THE 5-2 ZONE SHALL BE SUPPORTED FROM THE UNDERSIDE OF THE FLOOR SLAB OR DECK.

SUBZONE 5-3: SYSTEM ELEMENTS IN THE 5-3 ZONE SHALL BE INSTALLED AS CLOSE AS POSSIBLE TO THE UNDERSIDE OF THE STRUCTURAL BEAM. ALL ELEMENTS SHALL BE SECURED TO THE BOTTOM OF THE BEAM. SUPPORT FOR SYSTEMS IN THIS ZONE MAY BE FROM THE UNDERSIDE OF THE DECK. HOWEVER, USE OF THE DECK FOR SUPPORT SHOULD BE MINIMIZED.

SUBZONE 5-5: SYSTEM ELEMENTS IN THE 5-5 ZONE SHALL BE SUPPORTED FROM THE PLATFORM PULVIN.

SUBZONE 5-7: SYSTEM ELEMENTS IN THE 5-7 ZONE SHALL BE SUPPORTED FROM THE PLATFORM.

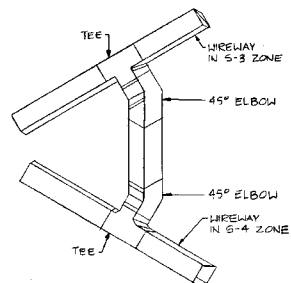
SUBZONE 5-7: SYSTEM ELEMENTS IN THE 5-7 ZONE AS WELL AS THE CEILING GRID SYSTEM SHALL BE SUPPORTED FROM THE UNDERSIDE OF THE PLATFORM. LIGHT FIXTURES WILL BE SUPPORTED BY THE ARCHITECTURAL CEILING GRID SYSTEM. CEILING MOUNTED ITEMS SHALL BE SUPPORTED BY A SYSTEM OF STRUCTURAL ELEMENTS SLANGING ON THE PLATFORM PULVIN. IN THE CASE OF HEAVY CEILING MOUNTED ITEMS, SUPPORT MAY BE PROVIDED BY FLOOR FRAMING ELEMENTS.



TYPICAL STRATEGY FOR SUPPORTING DISTRIBUTION IN 5-2 & 5-4 SUBZONES  
SCALE: 3/8" = 1'-0"

**INTERSTITIAL WIREWAY SYSTEM**

WIREWAY TYPE	SYMBOL
NORMAL POWER	(A)
CRITICAL POWER	(C)
LIFE SAFETY POWER	(L)
EQUIPMENT POWER	(E)
TELEPHONE	(T)
NURSE CALL	(N)
MATV/CTV/RADIO/PAGING	(R)
FIRE ALARM	(F)

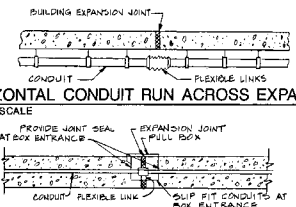


**5 WIREWAY TRANSITION FROM S-3 ZONE TO S-4 ZONE**  
NOT TO SCALE

SYMBOL	WIREWAY SIZE*	NEEPLATE
(A)	4 x 4	NORMAL POWER "A"
(B)	4 x 4	NORMAL POWER "B"
(C)	4 x 4	EQUIP. NORMAL POWER
(D)	4 x 4	CRITICAL POWER
(E)	2-1/2" x 2-1/2"	LIFE SAFETY POWER
(F)	2-1/2" x 2-1/2"	EQUIP. EMERGENCY POWER
(T)	6 x 6	TELEPHONE
(N)	6 x 6	MATV/CTV/RADIO/PAGING
(R)	6 x 6	FIRE ALARM SYSTEM
(F)	6 x 6	NURSE CALL
(P)	6 x 6	POWER

\*UNLESS NOTED OTHERWISE

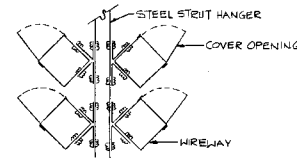
**8 HORIZONTAL CONDUIT RUN ACROSS EXPANSION JOINT**  
NOT TO SCALE



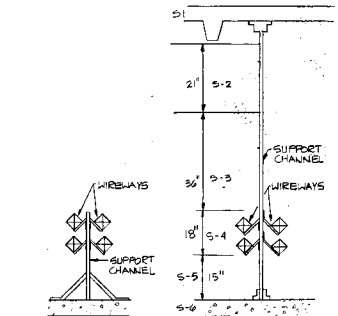
**7 CONCEALED CONDUIT CROSSING EXPANSION JOINT**  
NOT TO SCALE

SYMBOL	WIREWAY SIZE*	NEEPLATE
(A)	2-1/2" x 2-1/2"	NORMAL POWER "A"
(B)	2-1/2" x 2-1/2"	NORMAL POWER "B"
(C)	2-1/2" x 2-1/2"	EQUIP. NORMAL POWER
(D)	2-1/2" x 2-1/2"	CRITICAL POWER
(E)	2-1/2" x 2-1/2"	LIFE SAFETY POWER
(F)	2-1/2" x 2-1/2"	EQUIP. EMERGENCY POWER
(T)	4 x 4	TELEPHONE
(N)	4 x 4	MATV/CTV/RADIO/PAGING
(R)	4 x 4	FIRE ALARM SYSTEM
(F)	4 x 4	NURSE CALL
(P)	4 x 4	POWER

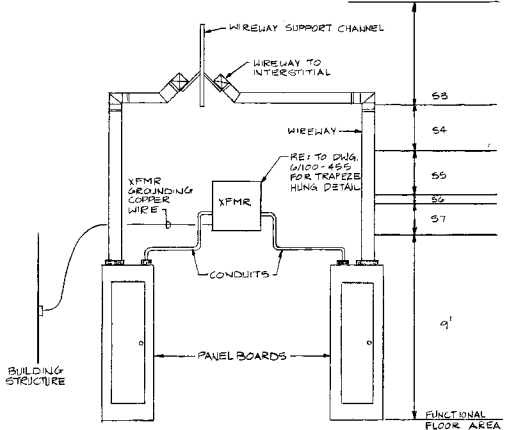
\*UNLESS NOTED OTHERWISE



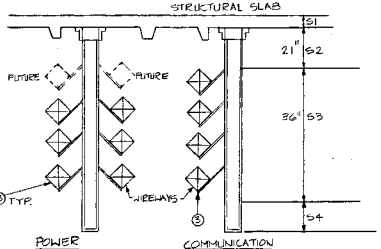
**4 WIREWAY IN S-4 ZONE**  
NOT TO SCALE



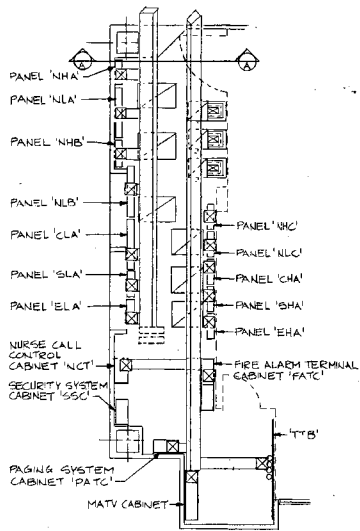
**2 ALTERNATE MOUNTING METHOD S-4 ZONE**  
NOT TO SCALE



**6 TYPICAL WIREWAY CONNECTION IN ELECTRICAL ROOM**  
NOT TO SCALE

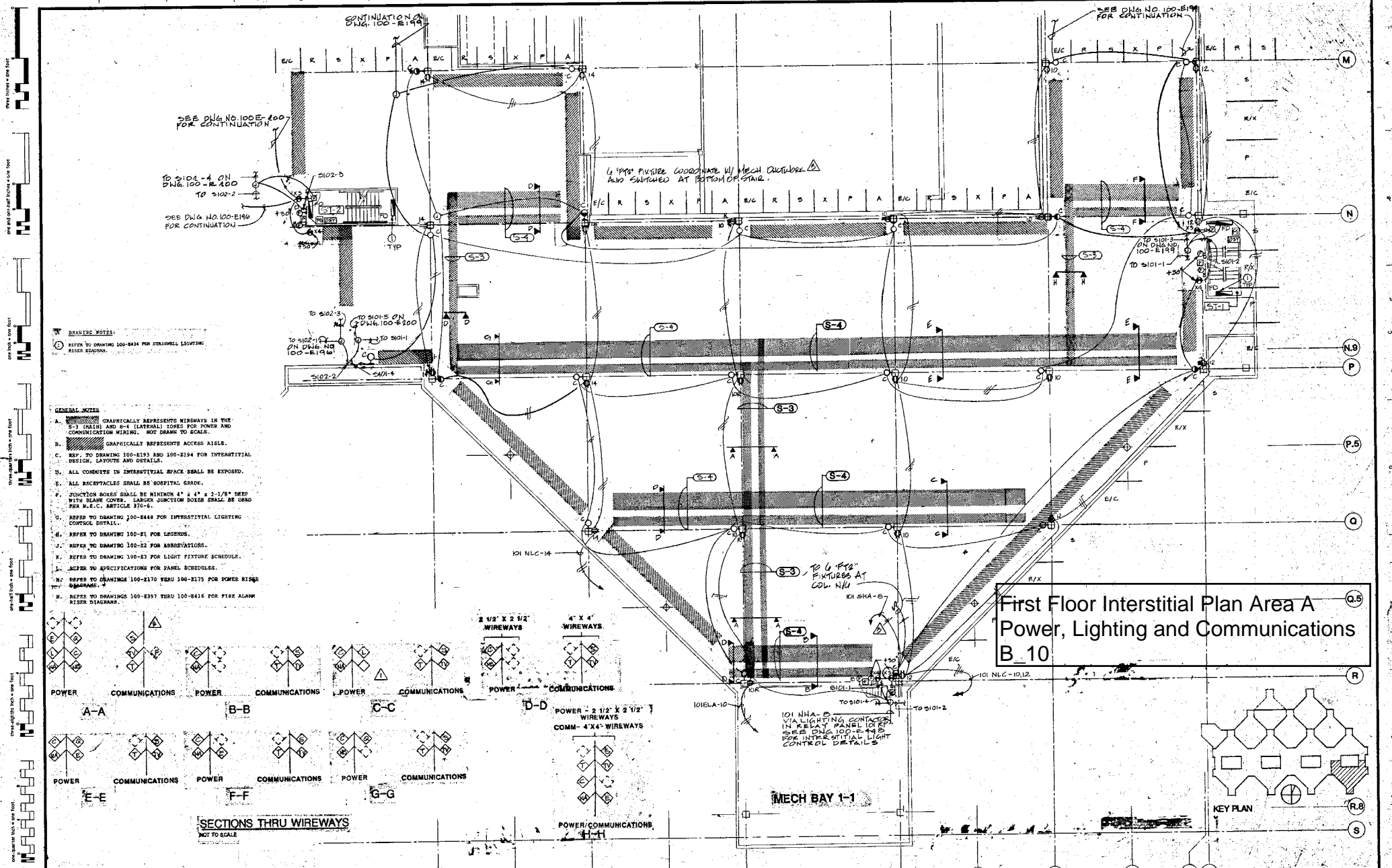


**3 SECTION A-A**  
NOT TO SCALE



**1 TYPICAL WIREWAY SYSTEM AT ELECTRICAL ROOM**  
NOT TO SCALE

- NOTES - REFER TO INTERSTITIAL WIREWAY SYSTEM**
- PROVIDE NEEPLATES ON ALL RACKS RUN IN THE INTERSTITIAL SPACE IDENTIFYING THE SYSTEM SHOWING AS DENOTED ON ABOVE SCHEDULES. NEEPLATES SHALL BE LOCATED AT 10" ON O.C. INTERVALS AND SHALL BE PLACED SO THEY CAN BE EASILY READ.
  - PROVIDE FIREPROOFING WHEREVER A WIREWAY PENETRATES A FIREWALL.
  - WIREWAY SHALL BE SUPPORTED AS SPECIFIED IN SPECIFICATIONS.
  - REFER TO DRAWINGS 100-1179 THRU 100-1213 FOR RACKWAY SYMBOLS.



SEE DWG. NO. 100-E-100 FOR CONTINUATION

TO S102-4 ON DWG. 100-E-100 TO S102-2  
SEE DWG. NO. 100-E-140 FOR CONTINUATION

4" PIPES COORDINATE W/ MESH OUTLETS AND SHOWN AT BOTTOM OF STAIR.

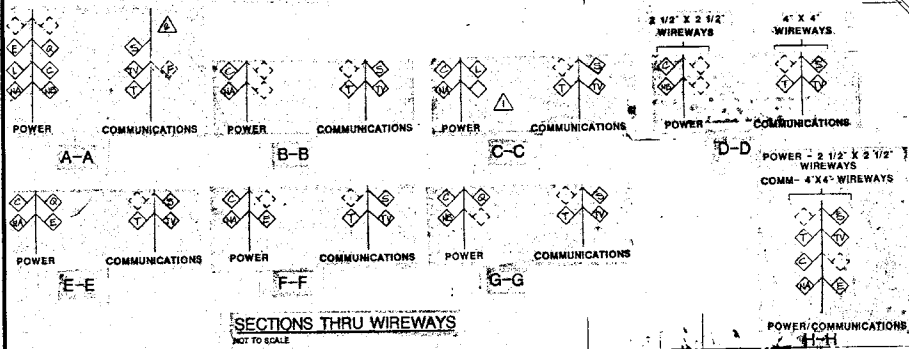
SEE DWG. NO. 100-E-140 FOR CONTINUATION

TO S102-3 TO S102-1 ON DWG. NO. 100-E-140  
TO S102-2 TO S102-1 ON DWG. NO. 100-E-140

TO S101-1 ON DWG. NO. 100-E-140  
TO S101-1

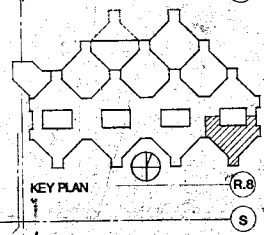
**DRAWING NOTES:**  
 1. REFER TO DRAWING 100-844 FOR STAIRWELL LIGHTING RISER SCHEDULE.

- GENERAL NOTES:**
- A. GRAPHICALLY REPRESENTS WIREWAYS IN THE S-3 (MAIN) AND S-4 (LATERAL) ZONES FOR POWER AND COMMUNICATIONS WIRING. NOT DRAWN TO SCALE.
  - B. GRAPHICALLY REPRESENTS ACCESS AISLE.
  - C. REF. TO DRAWING 100-8193 AND 100-8194 FOR INTERSTITIAL DESIGN, LAYOUTS AND DETAILS.
  - D. ALL CONDUITS IN INTERSTITIAL SPACE SHALL BE EXPOSED.
  - E. ALL RECEPTACLES SHALL BE HOSPITAL GRADE.
  - F. JUNCTION BOXES SHALL BE MINIMUM 4" x 4" x 2-1/8" DEEP WITH BLANK COVER. LARGER JUNCTION BOXES SHALL BE USED PER N.E.C. ARTICLE 370-6.
  - G. REFER TO DRAWING 100-8448 FOR INTERSTITIAL LIGHTING CONTROL DETAILS.
  - H. REFER TO DRAWING 100-81 FOR LEGENDS.
  - I. REFER TO DRAWING 100-82 FOR ASSERVATIONS.
  - J. REFER TO DRAWING 100-83 FOR LIGHT FIXTURE SCHEDULE.
  - K. REFER TO SPECIFICATIONS FOR PANEL SCHEDULES.
  - L. REFER TO DRAWINGS 100-8170 THRU 100-8175 FOR POWER RISER SCHEDULES.
  - M. REFER TO DRAWINGS 100-8197 THRU 100-8416 FOR FIRE ALARM RISER DIAGRAMS.

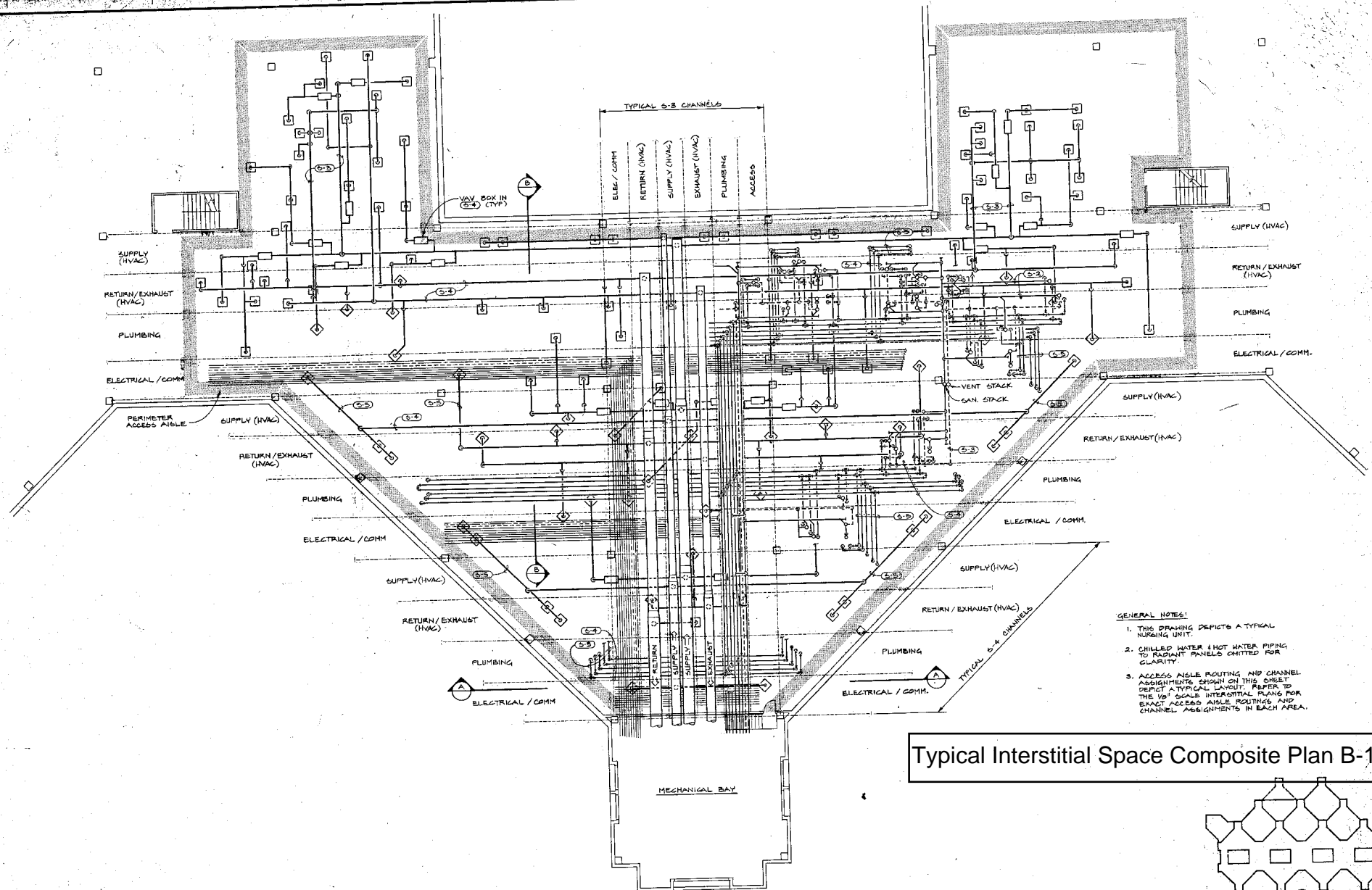


**First Floor Interstitial Plan Area A  
 Power, Lighting and Communications  
 B\_10**

MECH BAY 1-1

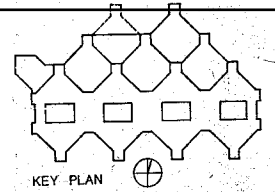


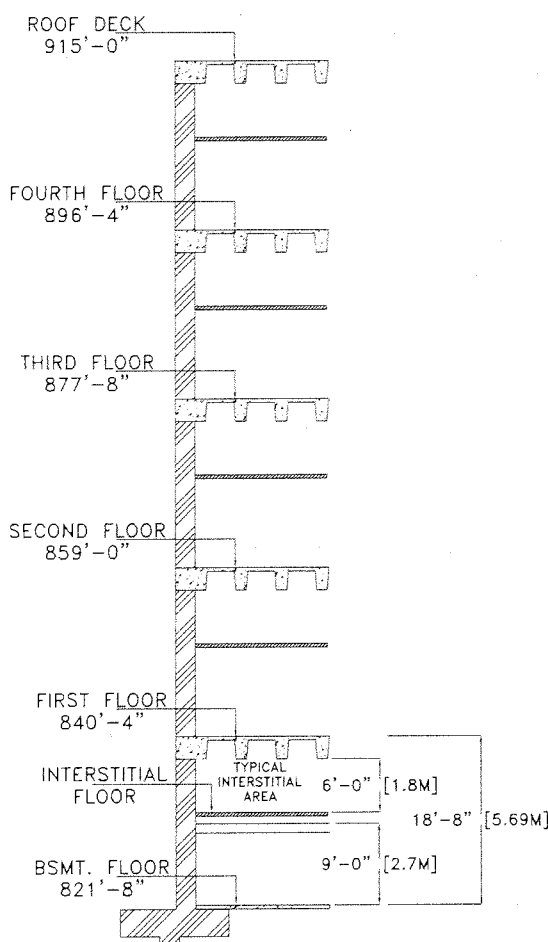
ONE HALF INCH = ONE FOOT  
 ONE INCH = ONE FOOT  
 ONE HALF INCH = ONE FOOT  
 ONE HALF INCH = ONE FOOT



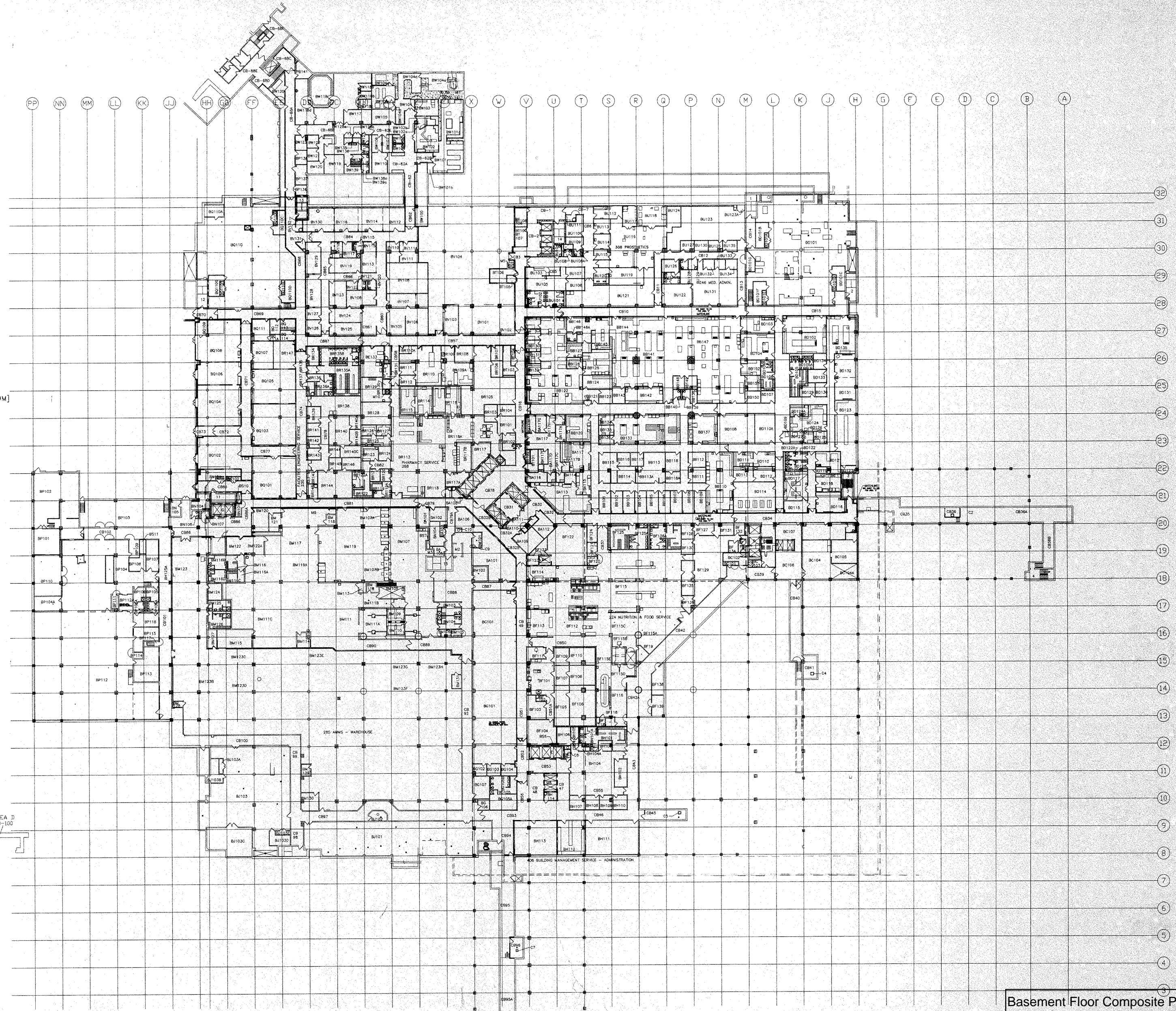
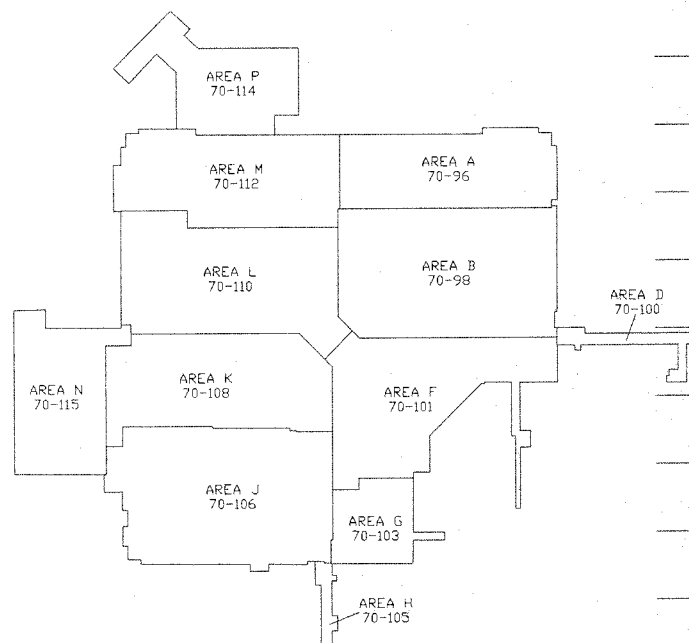
- GENERAL NOTES:**
1. THIS DRAWING DEPICTS A TYPICAL NURSING UNIT.
  2. CHILLED WATER & HOT WATER PIPING TO RADIANT PANELS OMITTED FOR CLARITY.
  3. ACCESS AISLE ROUTING AND CHANNEL ASSIGNMENTS SHOWN ON THIS SHEET DEPICT A TYPICAL LAYOUT. REFER TO THE 1/8" SCALE INTERSTITIAL PLANS FOR EXACT ACCESS AISLE ROUTINGS AND CHANNEL ASSIGNMENTS IN EACH AREA.

Typical Interstitial Space Composite Plan B-11

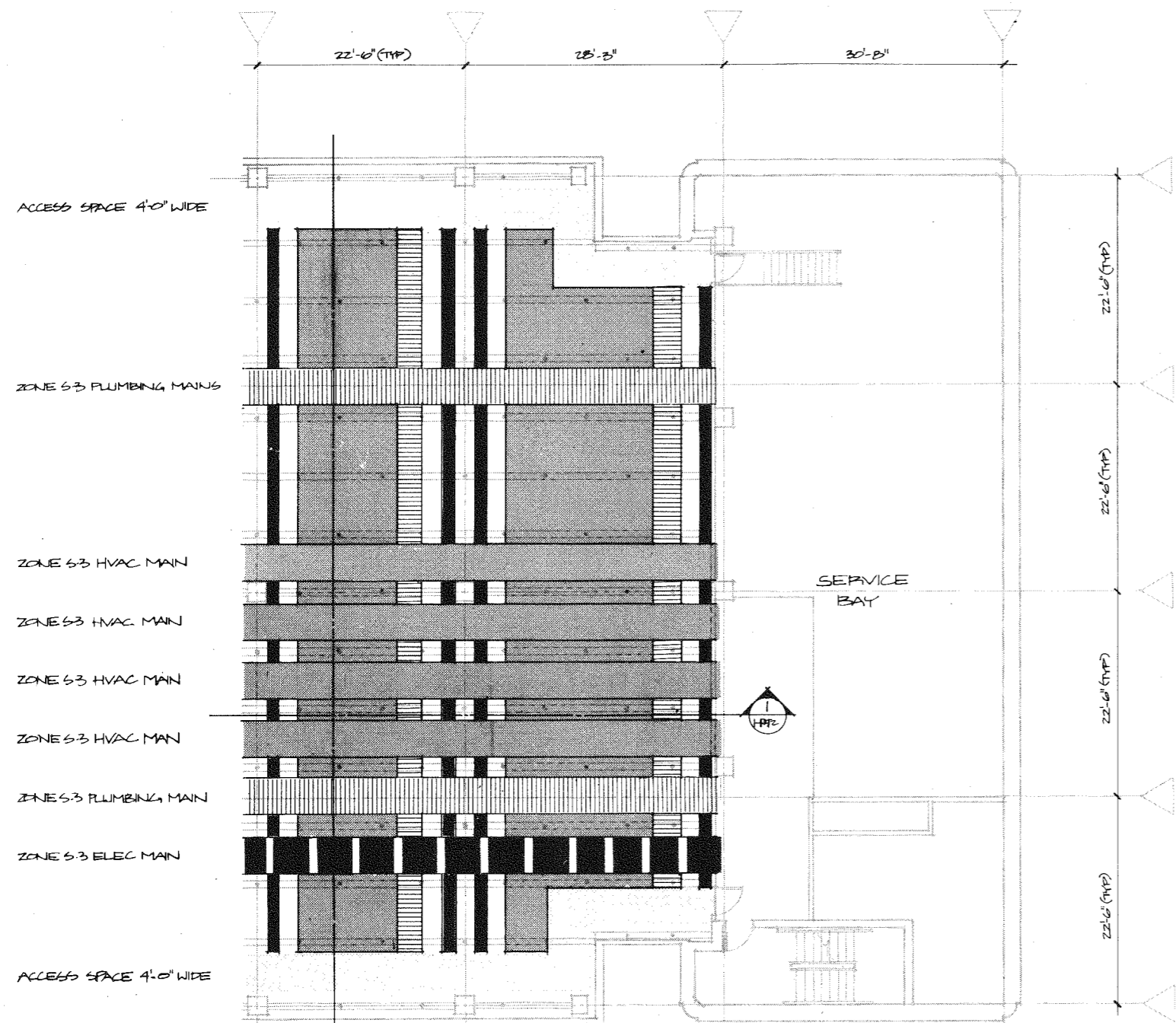




TYPICAL ELEVATION  
SCALE: NOT TO SCALE



Basement Floor Composite Plan B-12

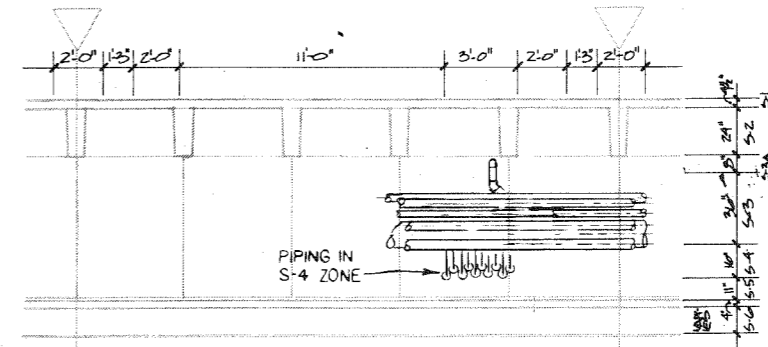


INTERSTITIAL PLAN  
1/8" = 1'-0"

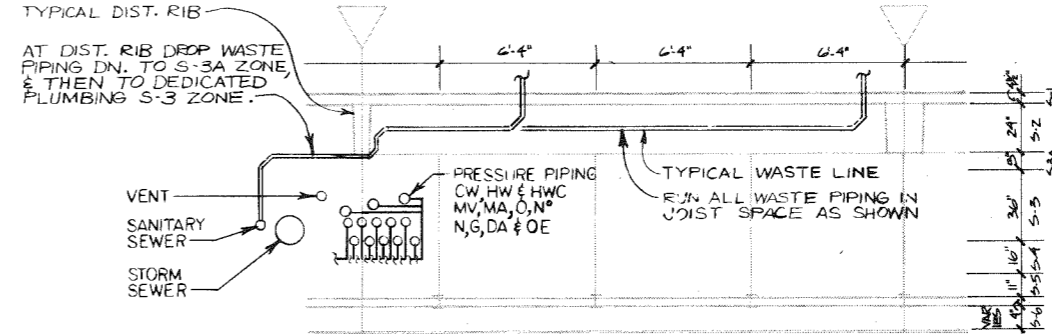
1 SECTION  
1/8" = 1'-0"

2 SECTION  
1/8" = 1'-0"

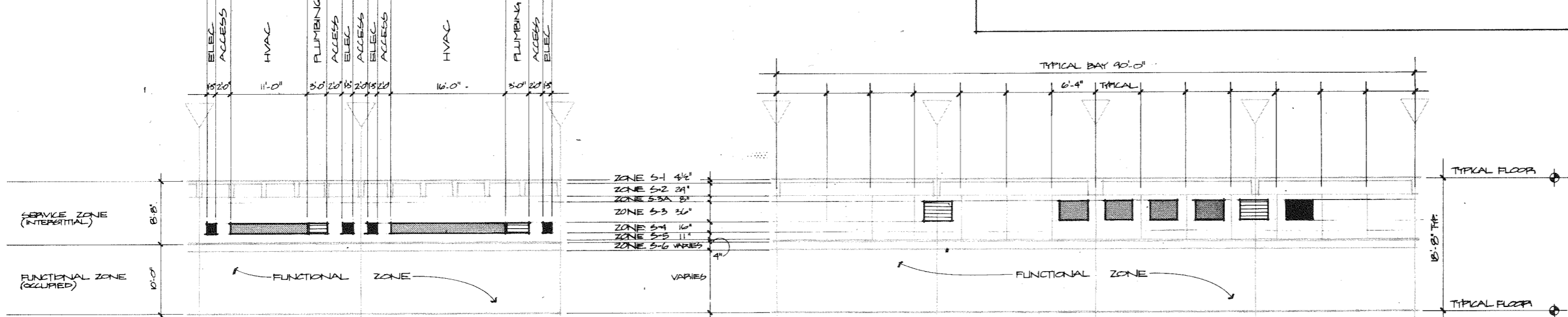
NOTE: A. SEE 1/32" S-3 LEVEL INTERSTITIAL PLANS FOR EQUIPMENT LOCATIONS IN ZONE S-3  
B. SEE SHIT H-100 FOR SECTIONS THRU INTERSTITIAL @ 1/4" = 1'-0" SCALE



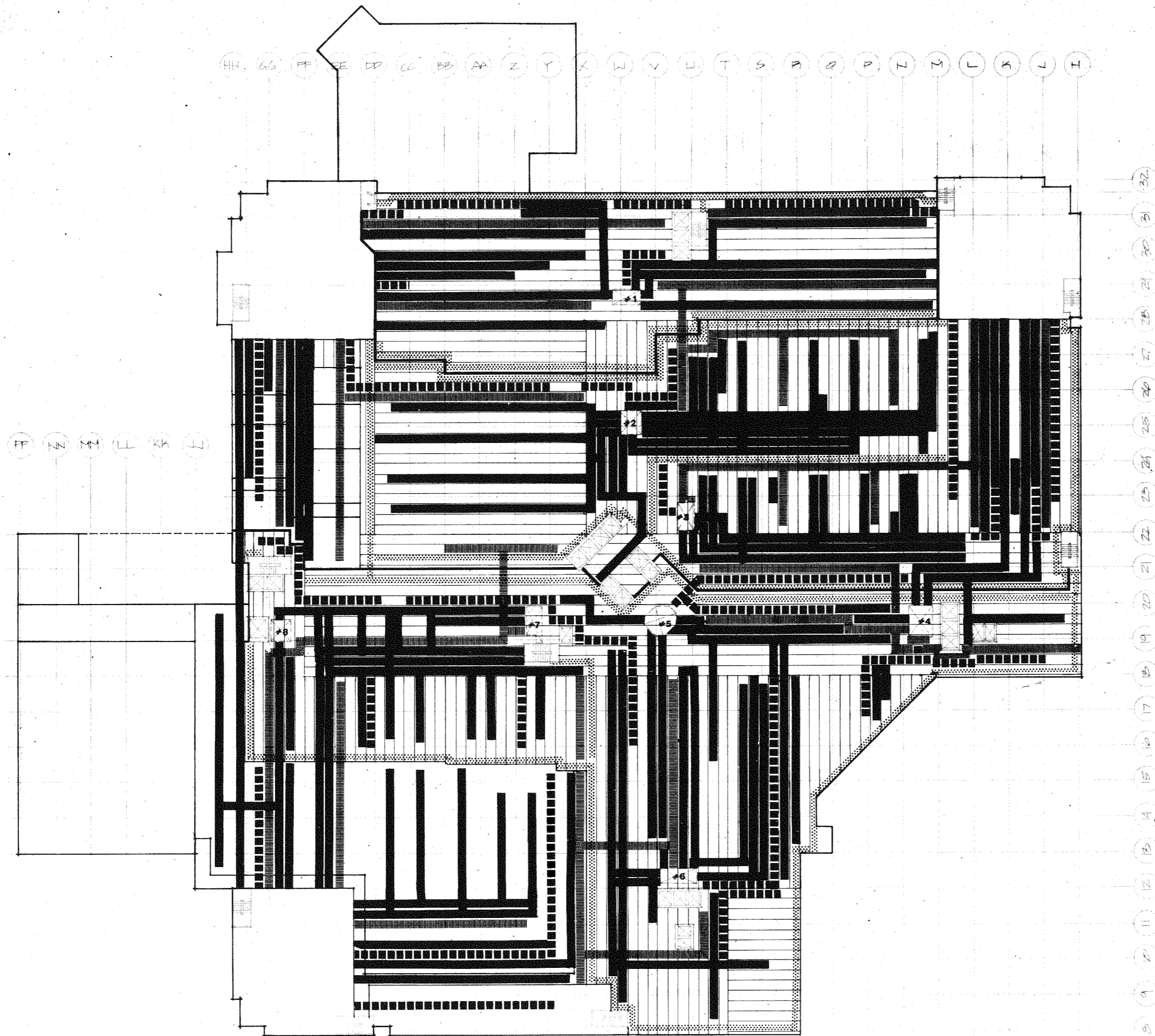
SECTION SIMILAR TO SECTION #1 THIS SHIT  
SCALE 1/4" = 1'-0"



SECTION SIMILAR TO SECTION #2 THIS SHIT  
SCALE 1/4" = 1'-0"



ORIENTATE SECTION WITH ARROW TOWARD CENTER OF MIDDLE OF BUILDING TYPICAL



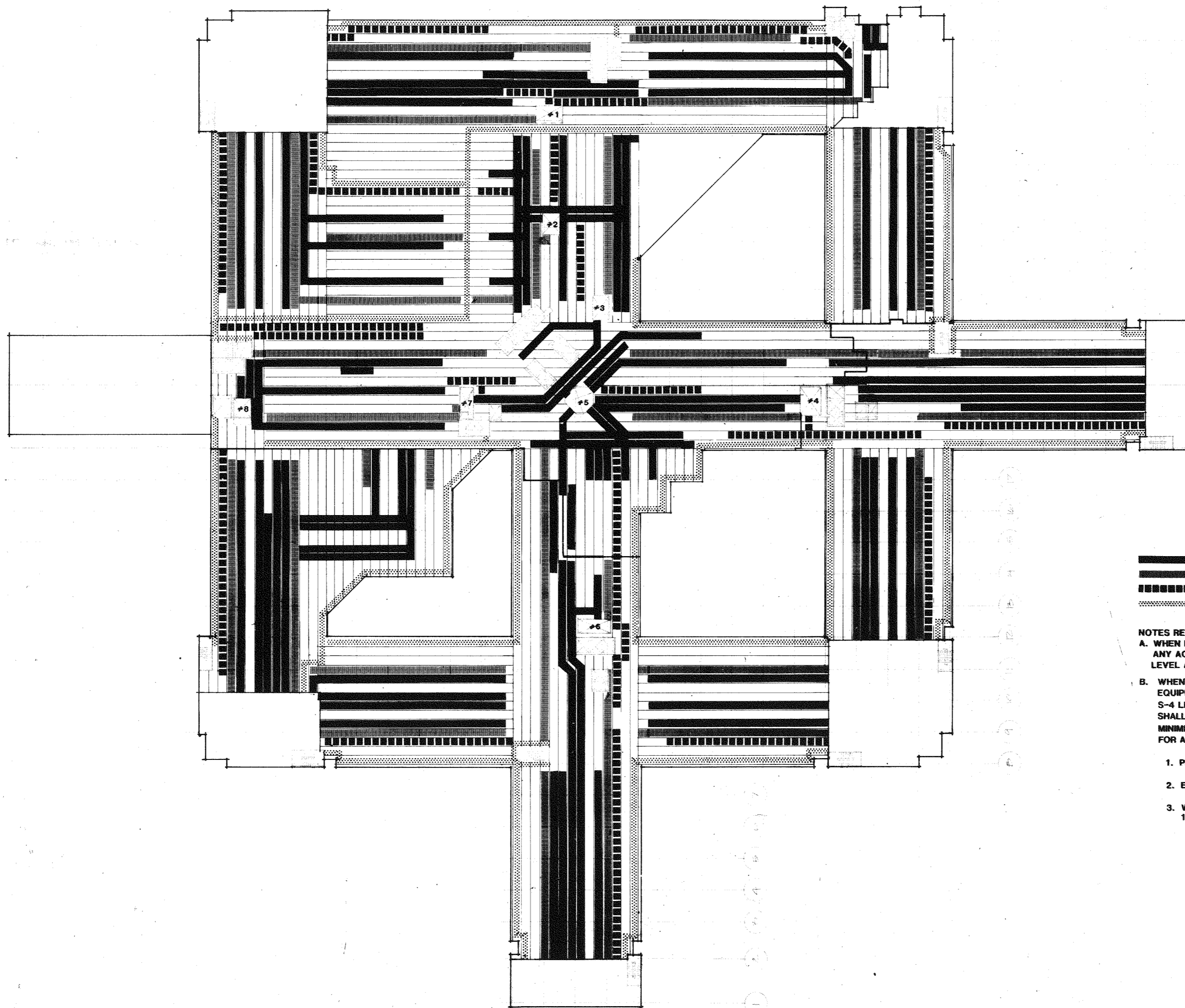
■ HVAC  
 ■ PLUMBING  
 ■ ELECTRICAL  
 ■ ACCESS

**NOTES REGARDING LEVEL S-3 DISTRIBUTION**  
**A. WHEN HVAC PLUMBING OR ELEC EQUIPMENT INTERSECTS ANY ACCESS SPACE, EQUIPMENT SHALL RISE UP TO S-3A LEVEL AND BE ARRANGED AS TO MINIMIZE DEPTH OF EQUIPMENT.**  
**B. WHEN EQUIPMENT INTERSECTS EQUIPMENT THE YIELDING EQUIPMENT SHALL DROP DOWN TO ITS DEDICATED S-4 LEVEL SPACE AS REQUIRED, OR YIELDING EQUIPMENT SHALL RISE UP TO S-3A LEVEL AND BE ARRANGED AS TO MINIMIZE DEPTH OF EQUIPMENT. SEE 1/8" PLANS FOR ACTUAL EQUIPMENT LOCATION.**

1. PLUMBING SHALL YIELD TO ALL OTHER EQUIPMENT.
2. ELEC SHALL YIELD TO HVAC.
3. WHEN HVAC INTERSECTS HVAC SEE 1/8" HVAC INTERSTITIAL PLANS.

Basement S-3 level Interstitial plan B-14



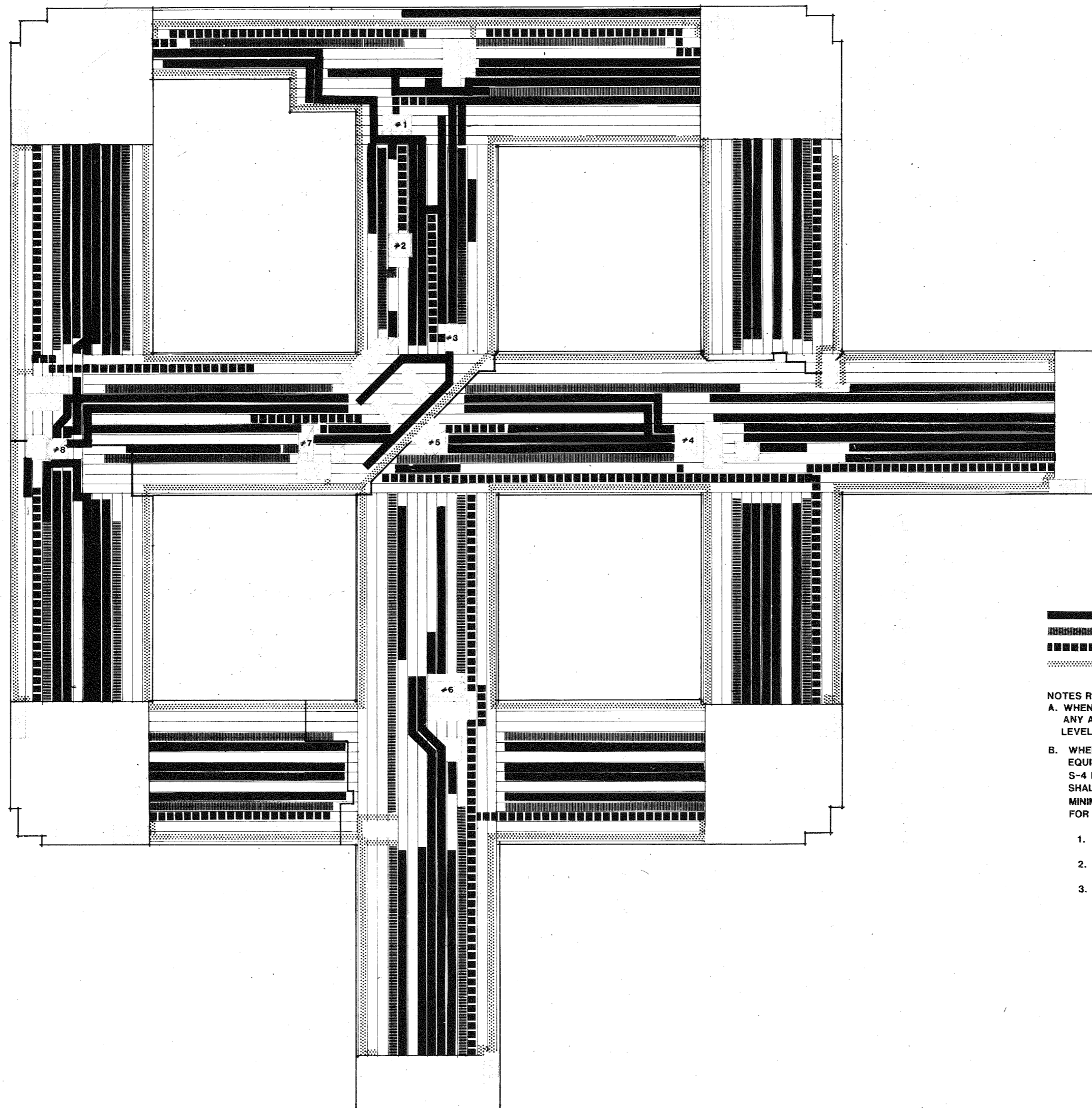


——— HVAC  
 - - - - - PLUMBING  
 ······ ELECTRICAL  
 ······ ACCESS

- NOTES REGARDING LEVEL S-3 DISTRIBUTION
- A. WHEN HVAC PLUMBING OR ELEC EQUIPMENT INTERSECTS ANY ACCESS SPACE, EQUIPMENT SHALL RISE UP TO S-3A LEVEL AND BE ARRANGED AS TO MINIMIZE DEPTH OF EQUIPMENT.
  - B. WHEN EQUIPMENT INTERSECTS EQUIPMENT THE YIELDING EQUIPMENT SHALL DROP DOWN TO ITS DEDICATED S-4 LEVEL SPACE AS REQUIRED, OR YIELDING EQUIPMENT SHALL RISE UP TO S-3A LEVEL AND BE ARRANGED AS TO MINIMIZE DEPTH OF EQUIPMENT. SEE 1/8" PLANS FOR ACTUAL EQUIPMENT LOCATION.
1. PLUMBING SHALL YIELD TO ALL OTHER EQUIPMENT.
  2. ELEC SHALL YIELD TO HVAC.
  3. WHEN HVAC INTERSECTS HVAC SEE 1/8" HVAC INTERSTITIAL PLANS.

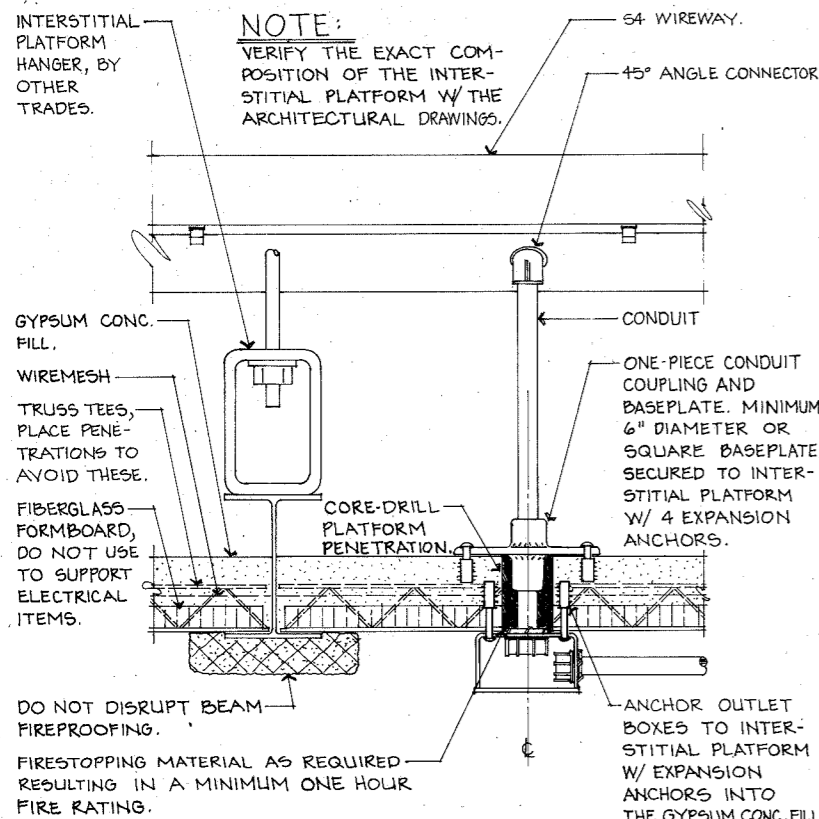
First Floor S-3 Level Interstitial Plan B-15

14.054  
 14.054  
 P.3

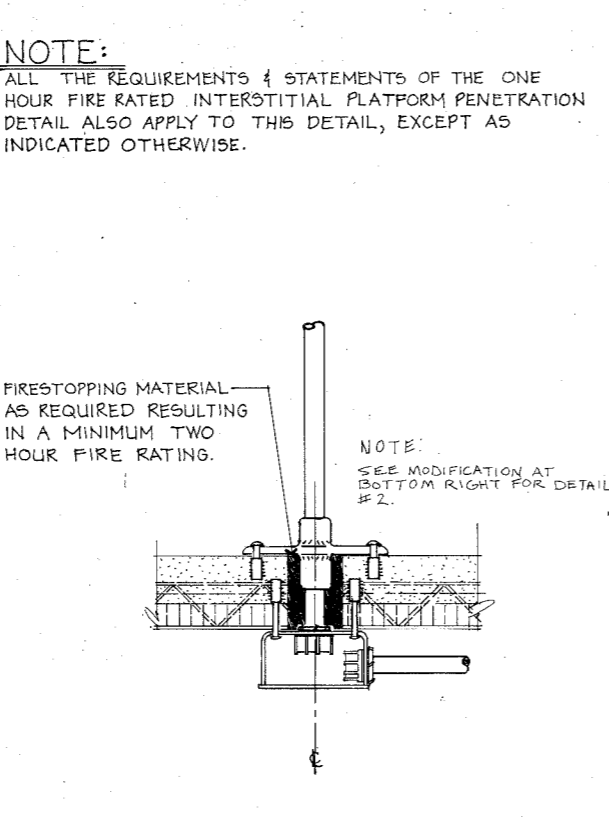


- HVAC
- - - - - PLUMBING
- ..... ELECTRICAL
- ..... ACCESS

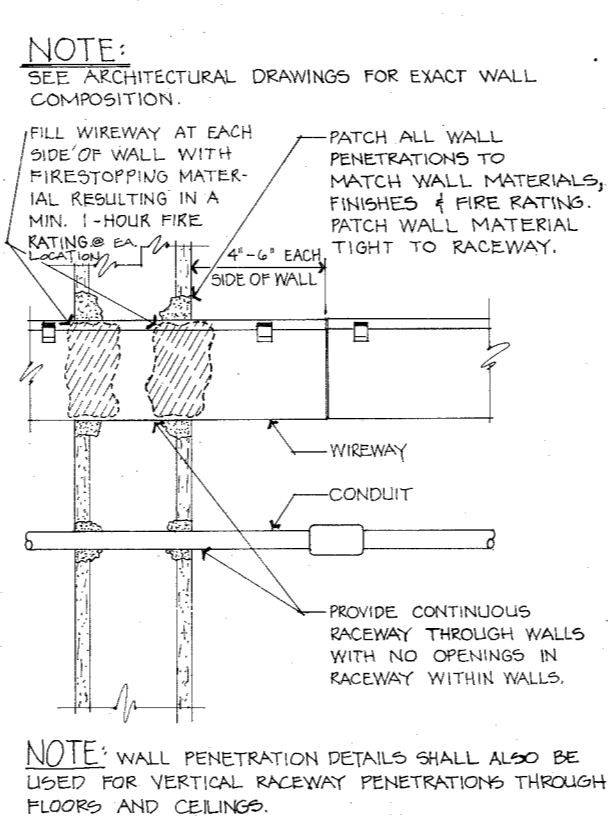
- NOTES REGARDING LEVEL S-3 DISTRIBUTION
- A. WHEN HVAC PLUMBING OR ELEC EQUIPMENT INTERSECTS ANY ACCESS SPACE, EQUIPMENT SHALL RISE UP TO S-3A LEVEL AND BE ARRANGED AS TO MINIMIZE DEPTH OF EQUIPMENT.
- B. WHEN EQUIPMENT INTERSECTS EQUIPMENT THE YIELDING EQUIPMENT SHALL DROP DOWN TO ITS DEDICATED S-4 LEVEL SPACE AS REQUIRED, OR YIELDING EQUIPMENT SHALL RISE UP TO S-3A LEVEL AND BE ARRANGED AS TO MINIMIZE DEPTH OF EQUIPMENT. SEE 1/8" PLANS FOR ACTUAL EQUIPMENT LOCATION.
1. PLUMBING SHALL YIELD TO ALL OTHER EQUIPMENT.
  2. ELEC SHALL YIELD TO HVAC.
  3. WHEN HVAC INTERSECTS HVAC SEE 1/8" HVAC INTERSTITIAL PLANS.



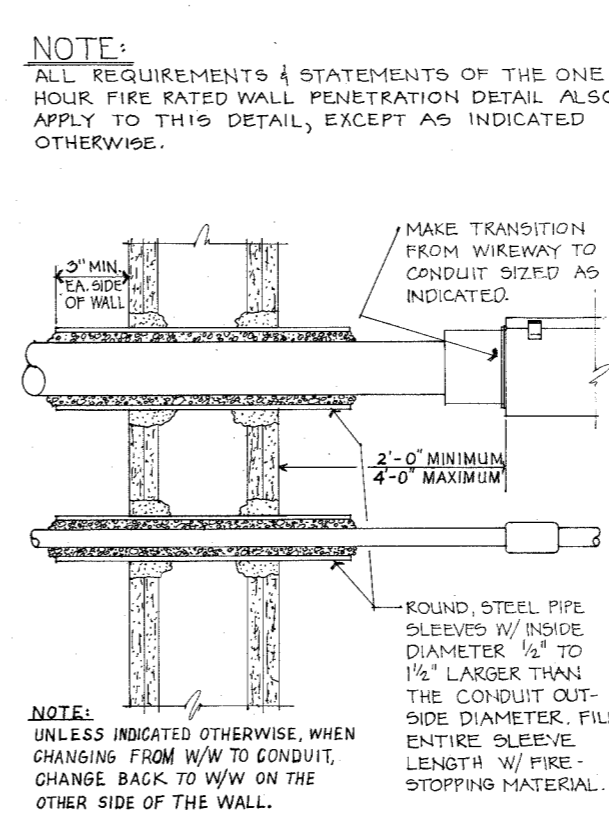
1. ONE HOUR FIRE RATED INTERSTITIAL PLATFORM PENETRATION DETAIL SCALE: 3"=1'-0"



2. TWO HOUR FIRE RATED INTERSTITIAL PLATFORM PENETRATION DETAIL SCALE: 3"=1'-0"

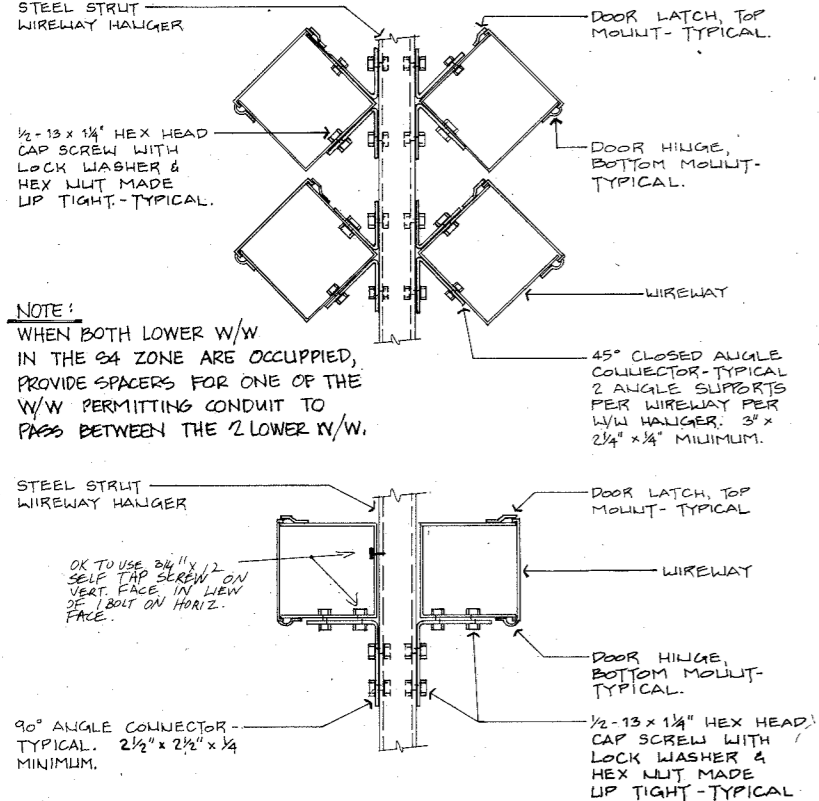


3. ONE HOUR FIRE RATED WALL PENETRATION DETAIL SCALE: 3"=1'-0"

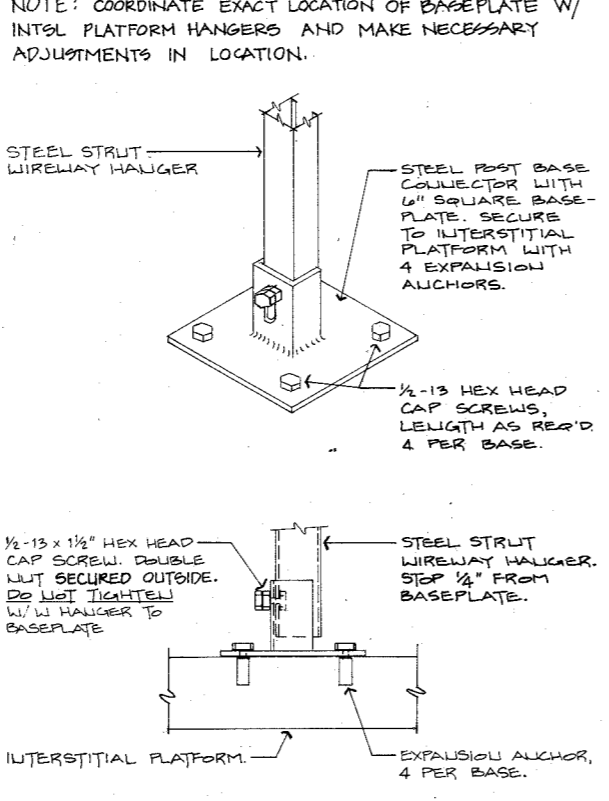


4. TWO HOUR FIRE RATED WALL PENETRATION DETAIL SCALE: 3"=1'-0"

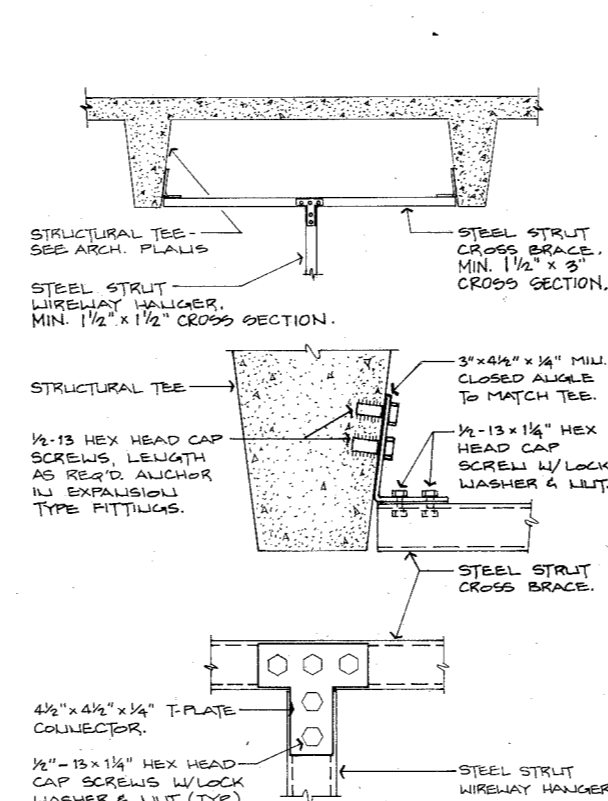
- INTERSTITIAL GENERAL NOTES:**
- (APPLY TO ALL INTERSTITIAL ELECTRICAL WORK)
  - PROVIDE RACEWAY INSTALLED IN S3 AND S4 ZONES ROUTED THE ENTIRE ZONE LENGTH INDICATED ON THE 1/8" SCALE PLANS UNLESS SPECIFICALLY INDICATED OTHERWISE TO END AT A SHORTER LENGTH.
  - ROUTE SPECIFIC CIRCUIT CONDUCTORS AND TELECOMMUNICATIONS SYSTEM CABLES ONLY IN THE SPECIFIC RACEWAY OF ZONES S3, S4 AND S5 INDICATED FOR THE USE OF THE RESPECTIVE PANELBOARDS AND TELECOMMUNICATIONS SYSTEMS, AS INDICATED ON THE DRAWINGS.
  - LABEL EACH RACEWAY IN THE DESIGNATED S3 AND S4 ZONES WITH PAINTED, STENCILED LETTERING INDICATING THE PANELBOARD OR TELECOMMUNICATIONS SYSTEM CONTAINED. THIS LABELING COLOR SHALL CORRESPOND WITH THE RACEWAY COLOR AND SHALL OCCUR AT LEAST EVERY 20 LINEAR FEET.
  - WIREWAY NOTED "FUTURE" ON THE DETAILS, IDENTIFY LOCATIONS THAT MUST BE KEPT OPEN UNDER THE CONTRACT. SUCH LOCATIONS SHALL BE KEPT AVAILABLE FOR FUTURE RACEWAY INSTALLATION.
  - PROVIDE NO WIREWAY HANGERS WHERE ALL THE SUPPORTED RACEWAYS ARE NOTED "FUTURE".
  - PROVIDE ALL NECESSARY "BRACKETING" FROM ZONES S3 AND S4 TO THE "DOWN" SYMBOL TO THE S4 RACEWAY, AND TO TERMINATING AT PANELS, CABINETS, AND EQUIPMENT MOUNTING HARDWARE. SUCH BRACKETING SHALL CONSIST OF 2" X 2" MINIMUM BRACKETING. WIREWAY TO WIREWAY BRACKETING SHALL CONSIST OF FEELING, MARKED ALIGNED BY THE WIREWAY HANGER CORNER FOR THE PUMPS AND PUMPS SHALL BE IN THE INSTALLATION OF S3 AND S4 AFTER THE WIREWAY INSTALLATION IS COMPLETE.
  - ADJUST FINAL LOCATIONS OF INTERSTITIAL PLATFORM PENETRATIONS AS PROVIDED TO CORRELATE WITH THE WORK OF OTHER TRADES.
  - THE "DOWN" SYMBOL, AT THE INTERSTITIAL RACEWAY PENETRATIONS, SHALL BE IDENTIFIED IN THE INTERSTITIAL RACEWAYS. SEE THE FUNCTIONAL FLOOR PLANS FOR WIRE SIZES, CONDUIT SIZES, AND THE SYMBOLS.
  - INTERSTITIAL HOMERUNS, INDICATED BY PANELBOARD NOM. SYMBOL NUMBER, AND "DOWN" SYMBOL, SHALL HAVE THE SAME SIZE WIRE AS THE FUNCTIONAL FLOOR WHEN NO WIRE SIZE IS INDICATED AT THE INTERSTITIAL HOMERUN.
  - WHEN A WIRE SIZE (FOR EXAMPLE: #10) APPEARS NEAR THE INTERSTITIAL HOMERUN, THAT WIRE SIZE SHALL BE USED FOR THE INDICATED CIRCUITS WHILE ROUTED IN INTERSTITIAL RACEWAYS. MAKE TRANSITION TO THE INTERSTITIAL WIRE SIZE IN THE S3 AND S4 RACEWAY AT THE "DOWN" SYMBOL LOCATION.
  - IF THE CIRCUIT IS TO HAVE A GROUND WIRE OTHER THAN THE #14 COMMON GROUND THE GROUND WIRE SIZE SHALL BE AS DESCRIBED IN 9 AND 10 ABOVE, BUT SHALL BE INDICATED SEPARATELY FROM THE CURRENT CARRYING CONDUCTOR SIZE AND IDENTIFIED (FOR EXAMPLE: #10 + #14 GND) WHICH INDICATES FUNCTIONAL FLOOR CURRENT CARRYING CONDUCTORS CHANGING TO #10 AND FUNCTIONAL FLOOR GROUND CONDUCTOR CHANGING TO #14 ALSO.)
  - WHEN TERMINATING AND SPLICING TERMINALS, MATCH WIRE SIZE WITH THE PROPER TERMINAL AND LUG WIRE SIZE RANGE.
  - WHEN WIRES ENTERING A PANELBOARD WOULD BE LARGER THAN THE INVESTMENT DEVICE LUG WIRE SIZE RANGE, REDUCED WIRE SIZE WITH A SPLICE WITHIN THE RACEWAY MUST AVOID THE PANELBOARD. THE SMALLEST ACCEPTABLE WIRE SIZE FOR CONNECTION TO OVERCURRENT DEVICES SHALL BE EQUAL TO THE SMALLEST BROWNE & CALVERT WIRE SIZE SHOWN ON THE FUNCTIONAL FLOOR FOR THE CIRCUIT UNDER CONSTRUCTION.
  - PROVIDE THE FOLLOWING DEVELOPMENT CONDUITING UNDER TOPS IN INTERSTITIAL RACEWAY:
    - #14 W/COMMON #14 AWG BARE COPPER GROUND WIRE IN ALL S3 & S4 W/COMMON #14 AWG BARE COPPER TELECOMMUNICATIONS RACEWAYS UNLESS OTHERWISE INDICATED.
    - WHEN NO GROUND WIRE IS INDICATED AT THE INTERSTITIAL HOMERUN, BOND THE FUNCTIONAL FLOOR GROUND WIRE TO THE COMMON #14 AWG GROUND WIRE IN THE INTERSTITIAL RACEWAY AS THE "DOWN" SYMBOL LOCATION.
    - WHEN A GROUND WIRE IS INDICATED WITH A DESIGNATION (FOR EXAMPLE: #10 + #14) AND TO "POINT" THE GROUND CONDUCTOR OF THE SIZE INDICATED FROM THE "DOWN" SYMBOL TO THE COMMON #14 AWG GROUND WIRE AT THE INDICATED LOCATION AND BOND THE TWO TOGETHER AT THAT LOCATION.
  - WHEN AN INDICATED INTSL GND WIRE IS NOT SHOWN TO A SPECIFIC INTSL W/W, IT IS A DEDICATED GROUND AND IT SHALL BE ROUTED TO THE GROUND BUS IN ITS RESPECTIVE PANELBOARD WITHOUT BEING BONDED TO ANY OTHER GROUND IN THE INTERSTITIAL SPACE. THE SAME REQUIREMENTS APPLY TO GROUND WIRES NOTED AS ROUTED TO A SPECIFIC PANELBOARD.
  - BOND WIREWAY TO W/W COMMON #14 AWG BARE GROUND WIRE AT LEAST EVERY 20 FEET UNLESS A W/W COMMON GROUND IS NOT PROVIDED.
  - INTERSTITIAL WIRING NOT IN THE S3 AND S4 RACEWAY SHALL COMPLY WITH WIRE AND CONDUIT SIZING RULES USED ON THE FUNCTIONAL FLOOR.
  - ROUTE CONDUITS EXPOSED IN THE INTERSTITIAL SPACE ALONG THE WALLS, IN THE S2 SPACE, AND AS INDICATED IN THE S3A, S3, S4, AND S5 ZONES. TO CROSS BEAMS AND OTHER STRUCTURAL MEMBERS, ROUTE CONDUIT IN THE S3A ZONE, BUT STAY TO THE TOP OF THE ZONE AND IN ALL CASES YIELD TO OTHER TRADES, ESPECIALLY PNEUMATIC TUBES.
  - IN THE INTERSTITIAL SPACE, INSTALL ALL DEVICES AT THE STANDARD MOUNTING HEIGHTS ABOVE THE INTERSTITIAL PLATFORM UNLESS INDICATED OTHERWISE FOR SPECIFIC DEVICES.
  - INSTALL TYPE I LIGHT FIXTURES IN THE INTERSTITIAL SPACE WITH THE BOTTOMS OF THE FIXTURES EVEN WITH THE BOTTOM OF THE INTERSTITIAL S2 ZONE. ADJUST EXACT FIXTURE LOCATIONS SLIGHTLY AS REQUIRED TO MAXIMIZE LIGHT OUTPUT AND TO PERMIT LAMP REPLACEMENT. ADJUST LIGHTING JUNCTION BOX LOCATIONS AS REQUIRED TO MAINTAIN ACCESSIBILITY.
  - INSTALL INTERSTITIAL SPACE EXIT LIGHTS SO THAT THE TOPS OF THE FIXTURES ARE EVEN WITH THE BOTTOM OF THE S2 ZONE. ALSO, INSTALL EXIT LIGHTS WITH MINIMUM INTRUSION INTO THE ACCESS SPACE BUT WITH MAXIMUM VISIBILITY.
  - PROVIDE FIRE STOPPING AS PER DETAIL 1, 2, 3, 4, 5, 6, 7, 8, 9, 10, 11, 12, 13, 14, 15, 16, 17, 18, 19, 20, 21, 22, 23, 24, 25, 26, 27, 28, 29, 30, 31, 32, 33, 34, 35, 36, 37, 38, 39, 40, 41, 42, 43, 44, 45, 46, 47, 48, 49, 50, 51, 52, 53, 54, 55, 56, 57, 58, 59, 60, 61, 62, 63, 64, 65, 66, 67, 68, 69, 70, 71, 72, 73, 74, 75, 76, 77, 78, 79, 80, 81, 82, 83, 84, 85, 86, 87, 88, 89, 90, 91, 92, 93, 94, 95, 96, 97, 98, 99, 100.



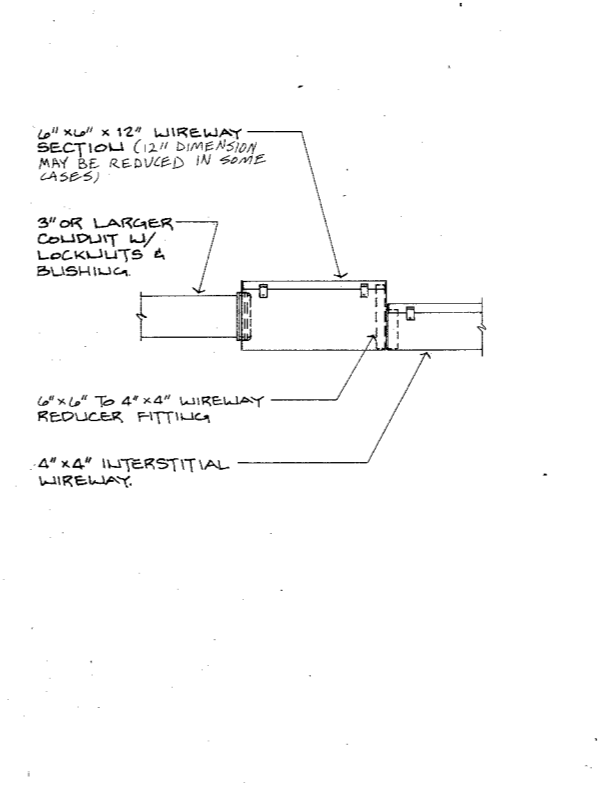
5. WIREWAY TO WIREWAY HANGER SUPPORT DETAILS No SCALE



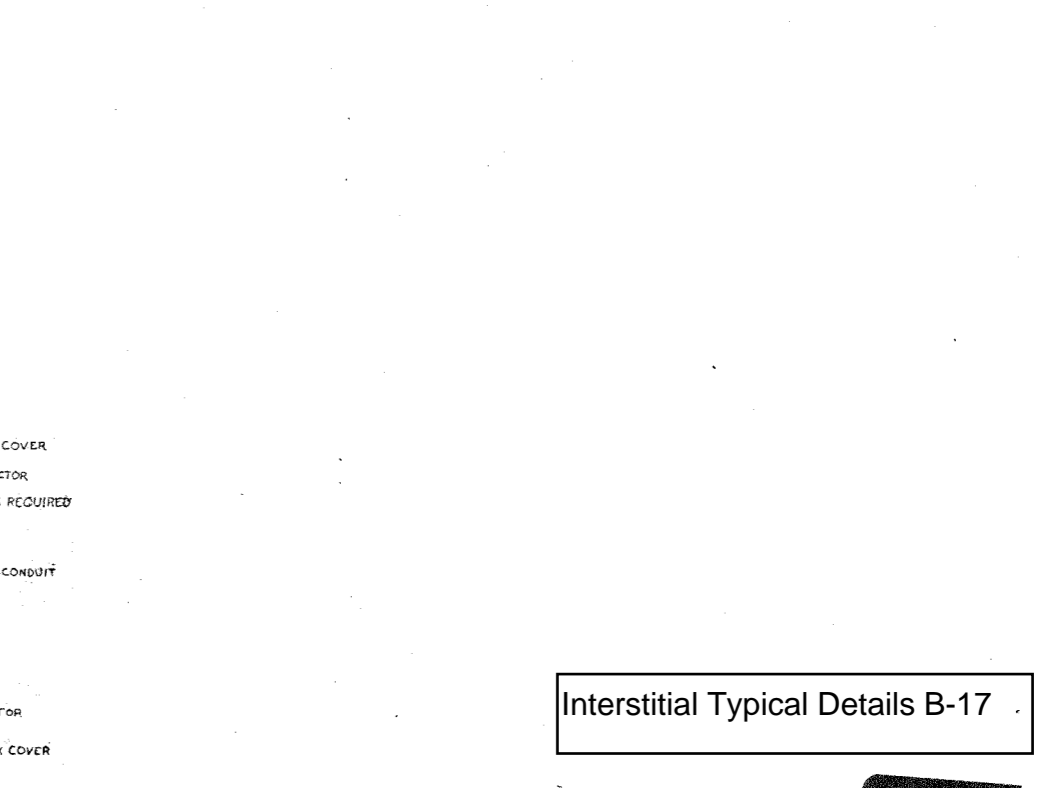
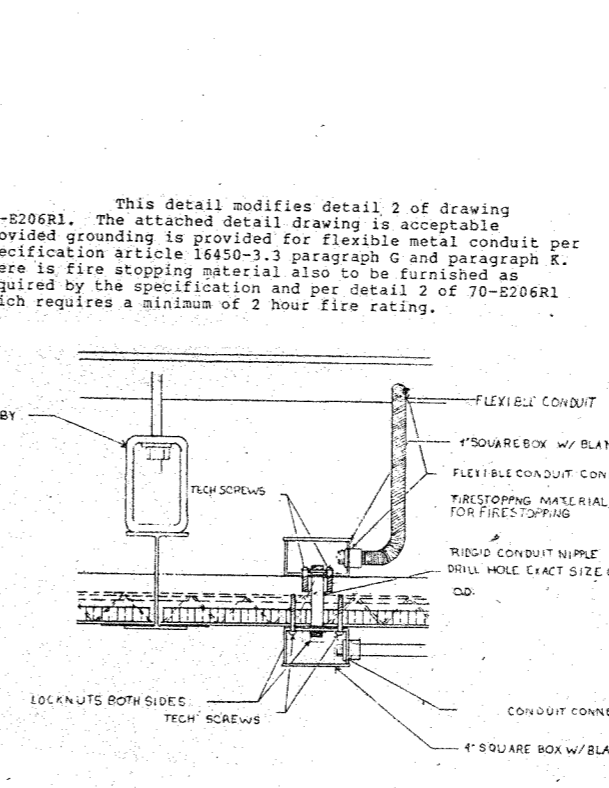
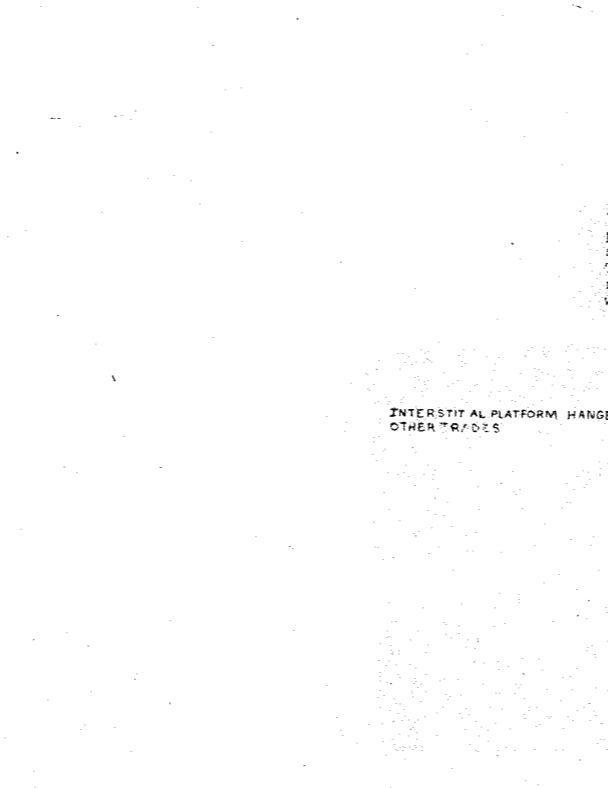
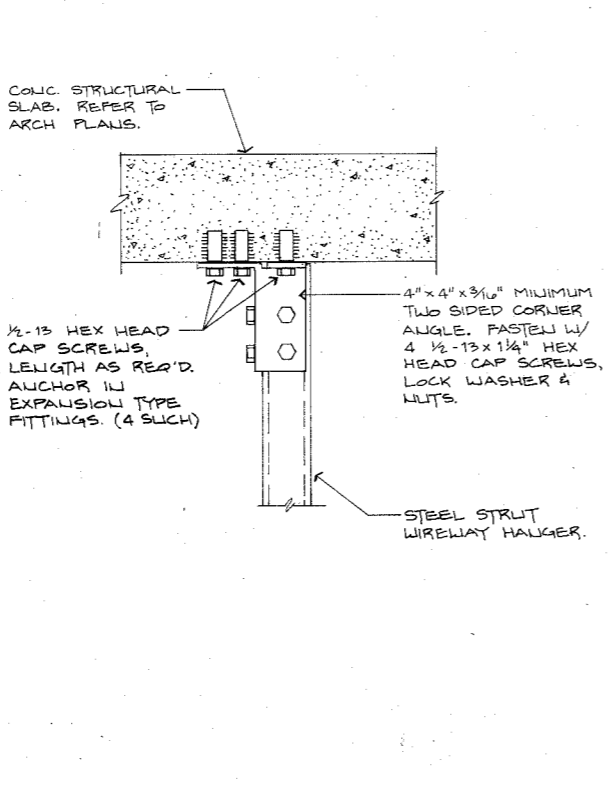
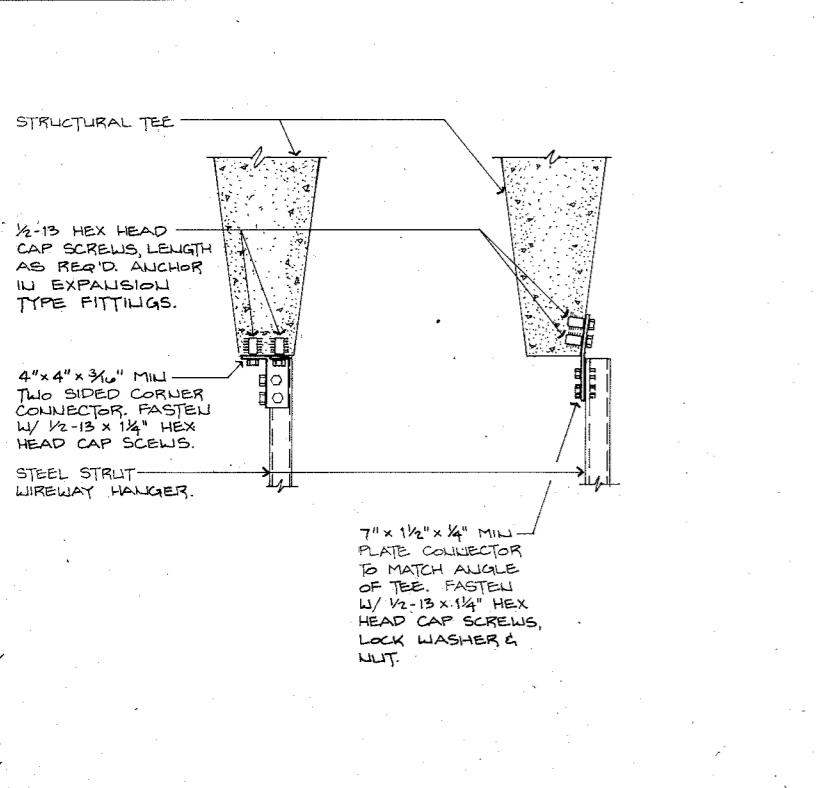
6. WIREWAY HANGER BOTTOM ANCHORING DETAIL No SCALE



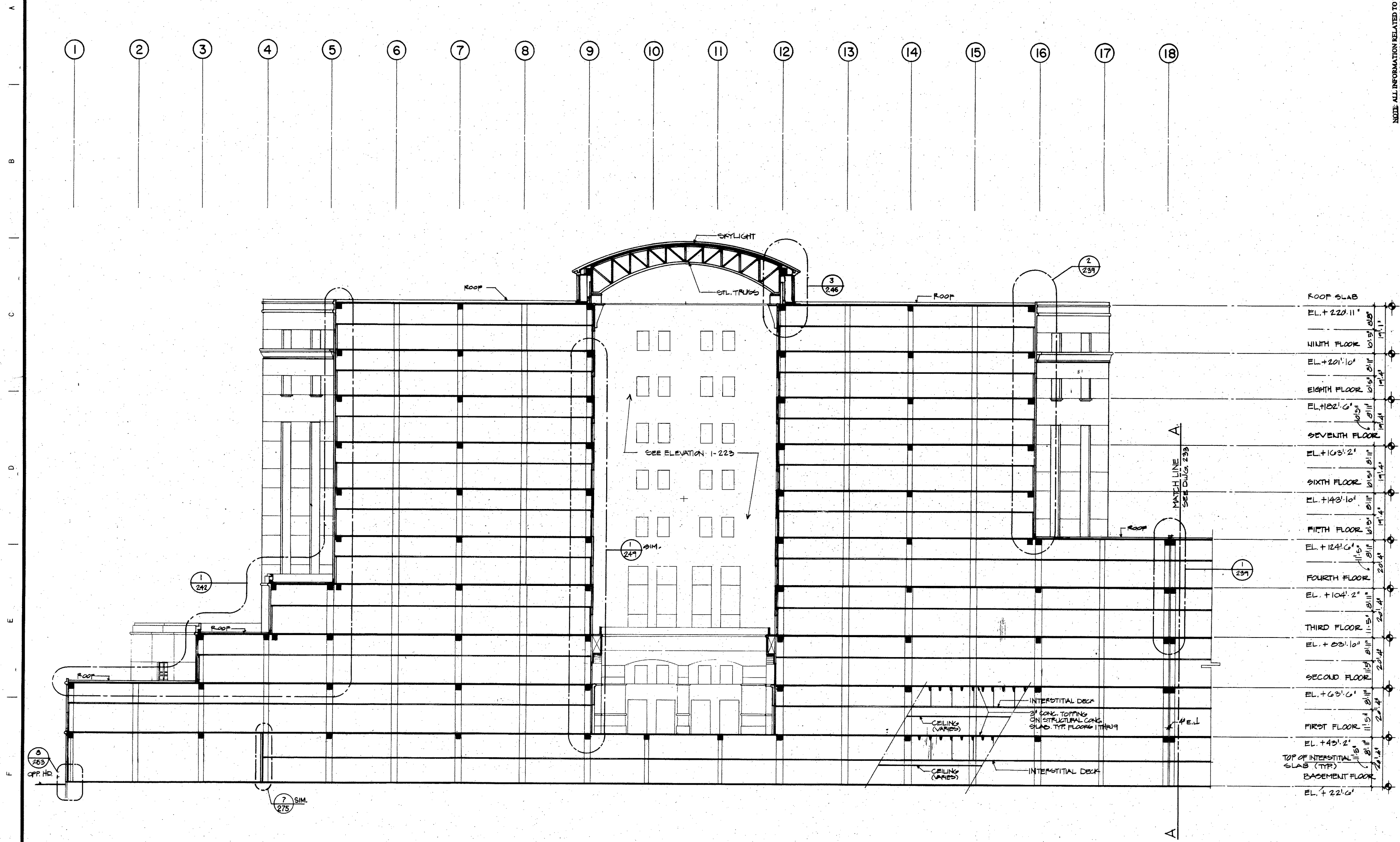
7. WIREWAY HANGER TOP ANCHORING DETAIL No SCALE



8. TERMINATION DETAIL - LARGE CONDUIT (3" OR GREATER) TO 4" X 4" WIREWAY No SCALE



NOTE: ALL INFORMATION RELATED TO THE "RECORD DRAWINGS" WAS PROVIDED SOLELY BY THE GENERAL CONTRACTOR OF RECORD. THE ORIGINAL CONTRACT DOCUMENTS HAVE BEEN REVISSED TO REFLECT THE GENERAL CONTRACTOR'S MARK UPS AND THEREFORE NEITHER THE ARCHITECT NOR THE ENGINEER

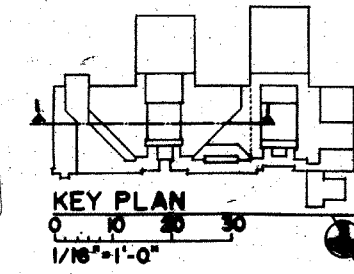


**I. BUILDING SECTION**  
1/16"=1'-0"

GENERAL NOTES:

1. THIS BUILDING SECTION IS ONLY A GENERAL DEPICTION OF THE PHYSICAL RELATIONSHIPS & MATERIALS USED. DETAILED STRUCTURAL INFORMATION, INTERIOR PARTITIONS, CEILINGING & EQUIPMENT ARE NOT SHOWN FOR CLARITY.  
REFER TO WALL SECTIONS & DETAILS FOR ADDITIONAL INFORMATION.

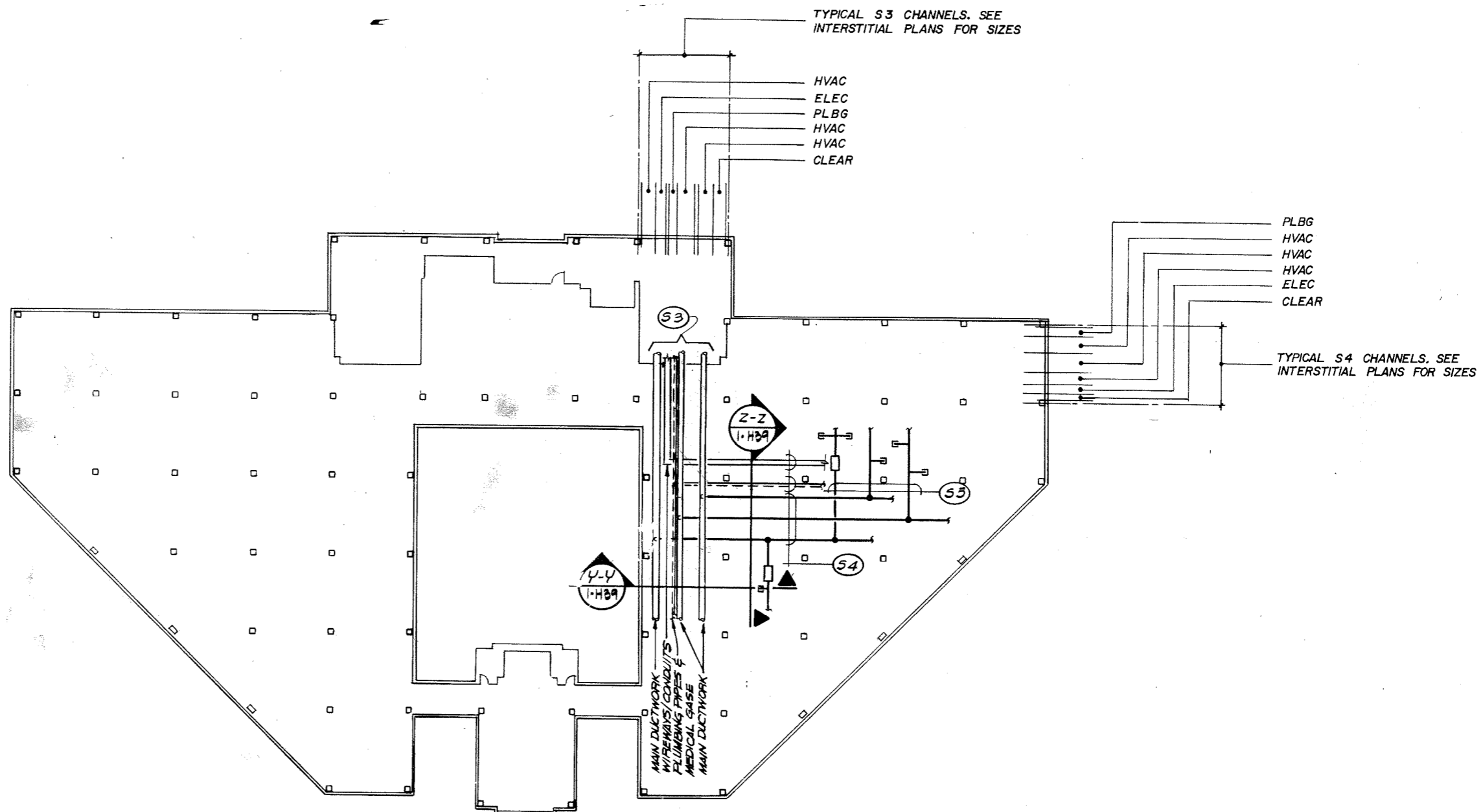
Buildign Gross Section B-18



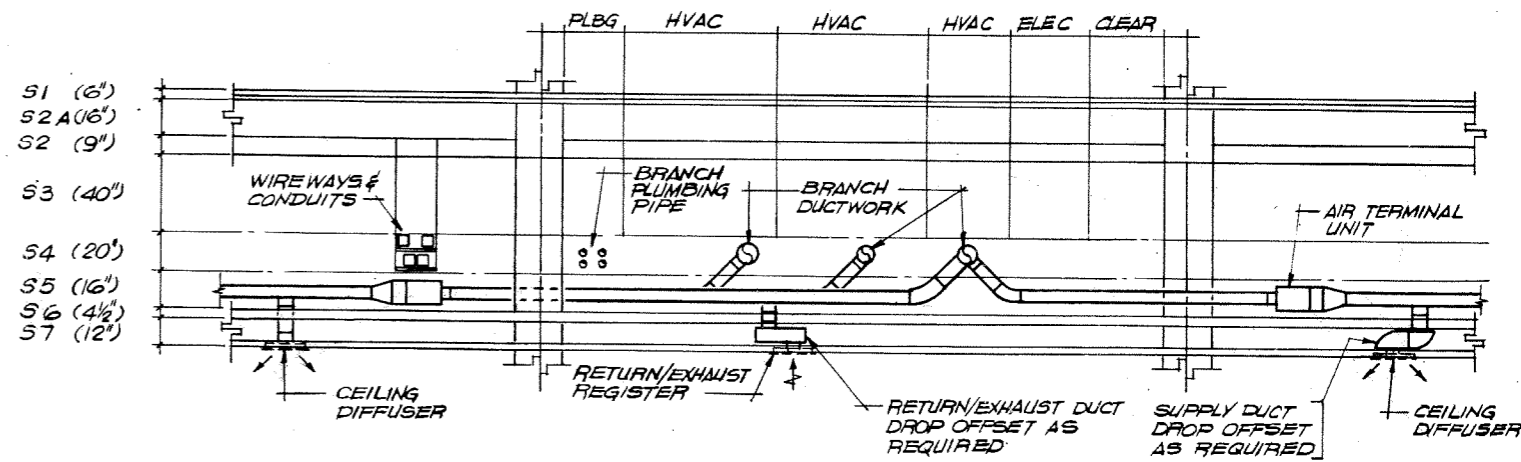
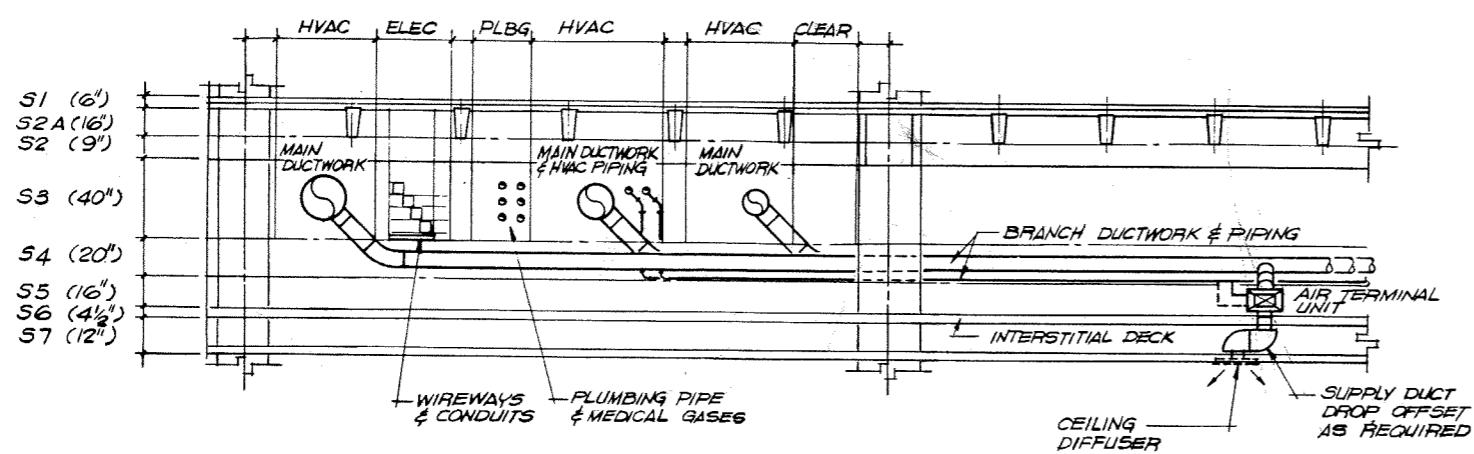
7-3-2-2254

FULLY PROTECTED BY AUTOMATIC

A  
B  
C  
D  
E  
F  
G



**TYPICAL INTERSTITIAL SPACE**  
N.T.S.



**Typical Interstitial Space Composite Plan and Section B-19**

NOTE: ALL INFORMATION RELATED TO THE "RECORD DRAWINGS" WAS PROVIDED SOLELY BY THE GENERAL CONTRACTOR OF RECORD. THE ORIGINAL CONTRACT DOCUMENTS HAVE BEEN REVISED TO REFLECT THE GENERAL CONTRACTOR'S MARK-UPS AND THEREFORE NEITHER THE ARCHITECT NOR THE ENGINEER GUARANTEE THEIR ACCURACY.

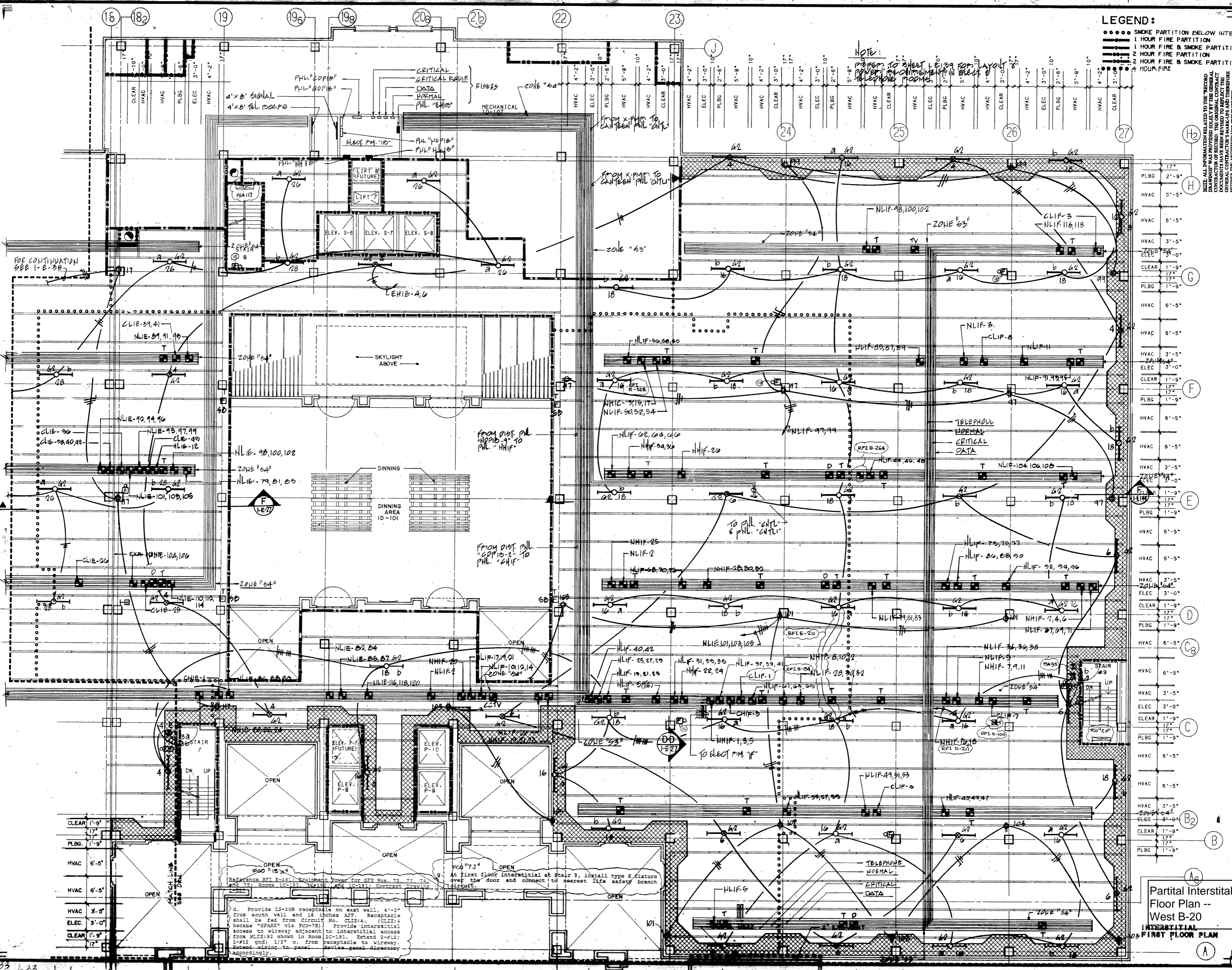
BRUNING 44-232 75987

REV	DATE	BY	CHK
1	10/10/89	...	...
2	...	...	...

**LEGEND:**

- SMOKE PARTITION BELOW INTERIOR
- 1 HOUR FIRE PARTITION
- 1 HOUR FIRE & SMOKE PARTITION
- 2 HOUR FIRE PARTITION
- 2 HOUR FIRE & SMOKE PARTITION
- 4 HOUR FIRE

**NOTE:**  
 POWER TO SHEET FROM POWER PLANT ROOMS TELEPHONE ROOMS

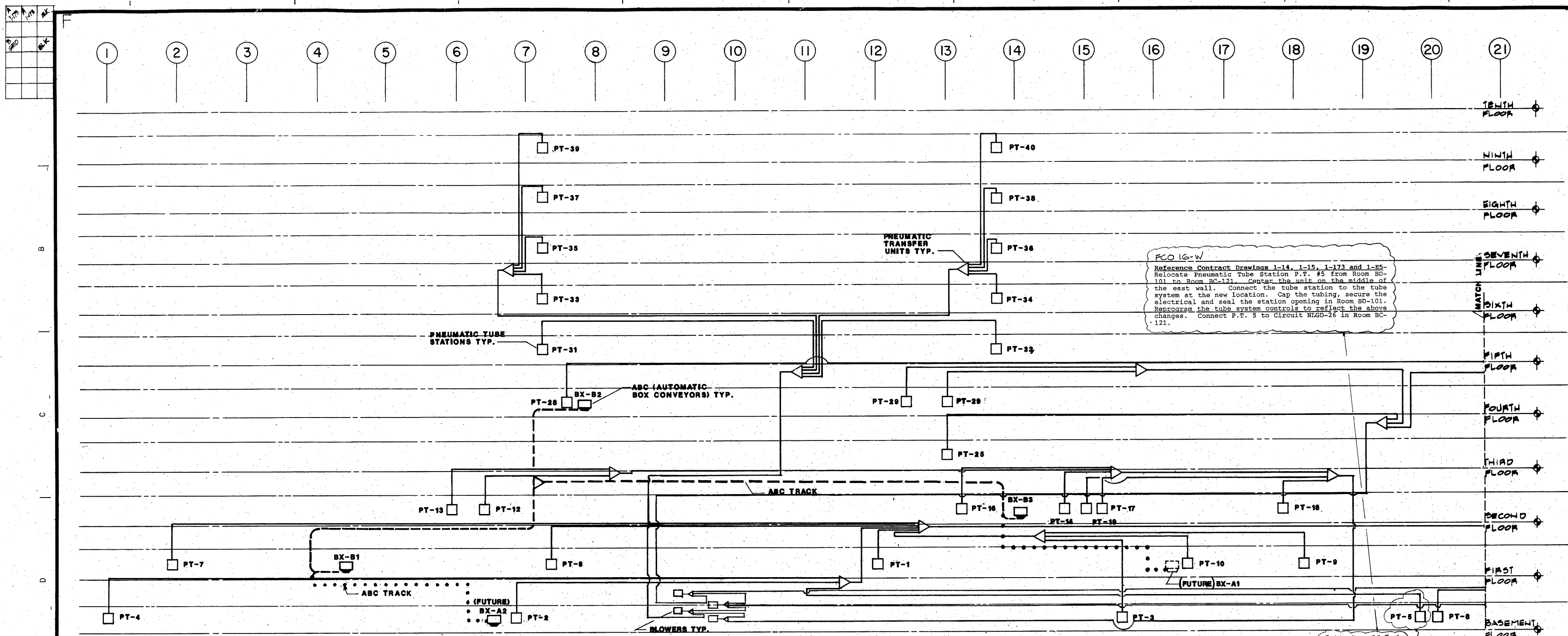


Reference SEE E-46: Equipment Power for GFF Nos. 72, 73, 74 and 75; Rooms 10-101, 10-102, 10-103, and 10-104; Contract Drawing 10-101-101.

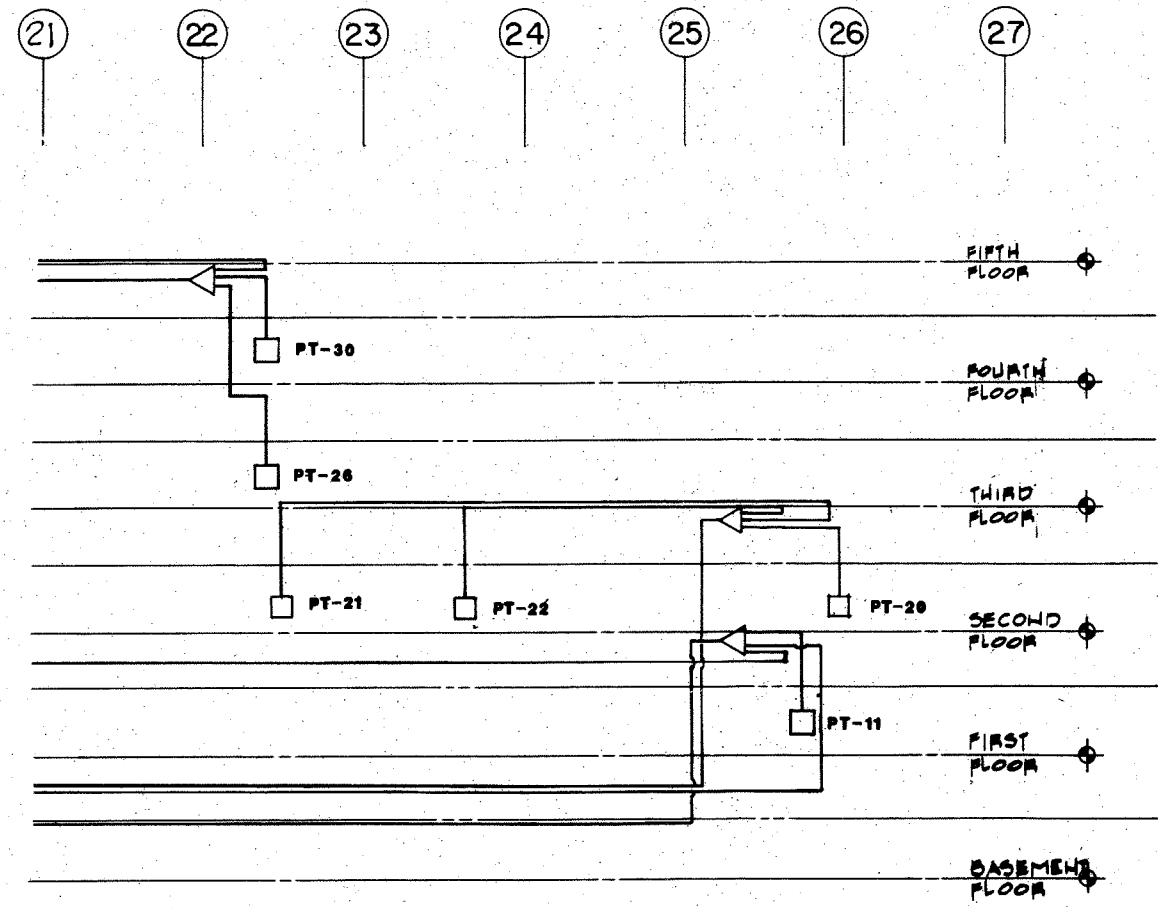
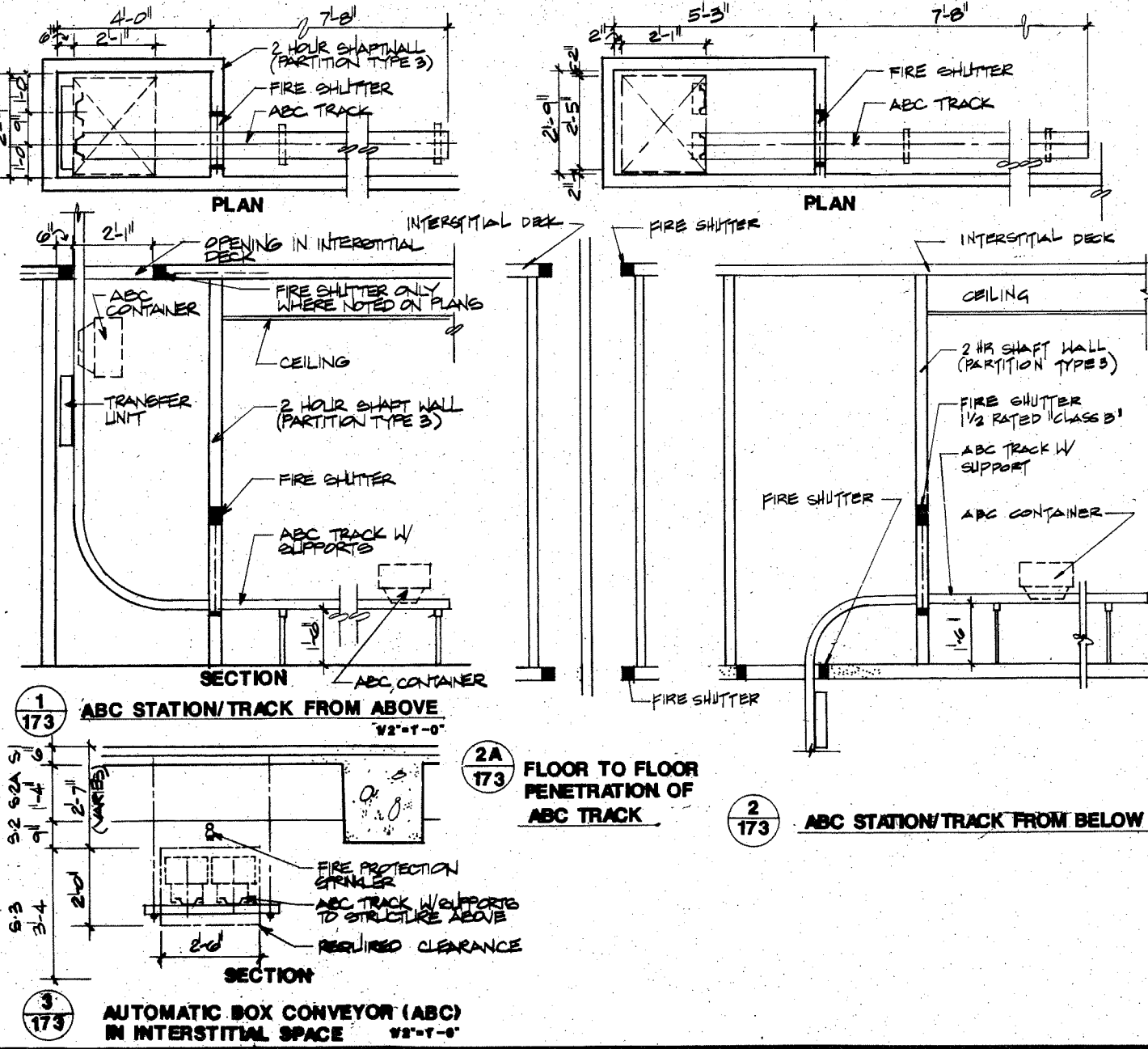
4. Provide 15-30R receptacle on east wall, 4'-0" from south wall and 18 inches AFF. Receptacle shall be fed from circuit No. CLIE-4. (CLIE-4 became "SPARE" via FCO-78) Provide interstitial access to wireway adjacent to interstitial access from NLIE-92 shown in Room 10-101. Extend 2-#12; 1-#12 gnd; 1/2" o. from receptacle to wireway. Connect wiring to panel. Route panel directory accordingly.

Partial Interstitial Floor Plan -- West B-20 INTERSTITIAL FIRST FLOOR PLAN

05/10/89 REVISIONS



FLOOR	ABC	P-TUBE	DEPARTMENT/UNIT/CLERK	RM. NO.	RM. NO.
BASEMENT	PT 2		SFD. DISPATCH	BB-116	
	PT 3		IP PHARMACY	CB-69	
	PT 4		SUPPLY SVC. WAREHOUSE	BB-142	
	PT 5		DATA PROCESSING	BB-142	
	PT 6		SEC. (INCL. CONTROL STA. AND REJECT STA.)	BB-111	
	PT 23		MAS MED. RECORDS FILE ROOM	BB-104	
FIRST	PT 1		OFF. RECEPTION	1A 102A	
	PT 7		AMB. CHIEF, EMERGENCY	1B-131	
	PT 8		AMB. CHIEF CLINIC, RECEPTION	1B-111	
	PT 9		AMB. CHIEF CLINIC, COLLECTION OF SPECIMEN	1B-159	
	PT 10		O.P. PHARMACY	1C-172	
	PT 11		O.P. PHARMACY	1C-106	
SECOND	PT 12		SURGERY CONTROL/ADMIN.	C2-10	
	PT 13		RECOVERY	C2-10	
	PT 14		CARDIOLOGY/PULM./HYPERBARIC	C2-47	
	PT 16		SICU	C2-39	
	PT 17		SICU	C2-44	
	PT 18		MICU	C2-52	
	PT 19		GPIU	C2-84	
	PT 20		DIR. SUITE/CHIEF OF STAFF	C2-68	
	PT 21		NURSING ADMIN.	C2-77	
	PT 22		SUPPLY SVC. ADMIN.	2K-143A	
THIRD	PT 25		INS	C3-33	
	PT 30		PSYCH. NURSING #1	C3-50	
	PT 30		PSYCH. NURSING #2		
FOURTH	PT 28		LAB. ADMINISTRATION	4B-106	
	PT 29		DIALYSIS	0A-17	
	PT 30		PSYCH. NURSING #2	0A-39	
	PT 31		NURSING UNIT #1	03-7	
FIFTH	PT 32		NURSING UNIT #2	03-18	
	PT 33		NURSING UNIT #3	05-7	
SIXTH	PT 34		NURSING UNIT #4	05-18	
	PT 35		NURSING UNIT #5	07-7	
SEVENTH	PT 36		NURSING UNIT #6	07-18	
	PT 37		NURSING UNIT #7	08-7	
EIGHTH	PT 38		NURSING UNIT #8	08-18	
	PT 39		NURSING UNIT #9	08-7	
NINTH	PT 40		NURSING UNIT #10	08-18	



Pneumatic Tube / ABC riser Diagram & Schedule B-21

NOTE: ALL INFORMATION RELATED TO THE RECORD SHALL BE PROVIDED SOLELY BY THE GENERAL CONTRACTOR. THE ORIGINAL CONTRACTOR SHALL BE RESPONSIBLE FOR THE ACCURACY OF THE INFORMATION PROVIDED.