

Where to get Wetland Data:

For digital data, go to the following web address and click on map of Alaska:
<http://wetlandsfws.er.usgs.gov/wlnds/launch.html>

For paper maps, contact:
Wildlife and Fisheries Sciences
South Dakota State University
Box 2140B, Room 138, SNP
Brookings, SD 57007-1696
Telephone: (605) 688-5890
<http://wfs.sdstate.edu/wfsdept/nwi/nwi.html>
SDSU_WETLAND@sdstate.edu

For further information, contact:
Jerry Tande, NWI Coordinator
(907) 786-3488 Jerry_Tande@fws.gov

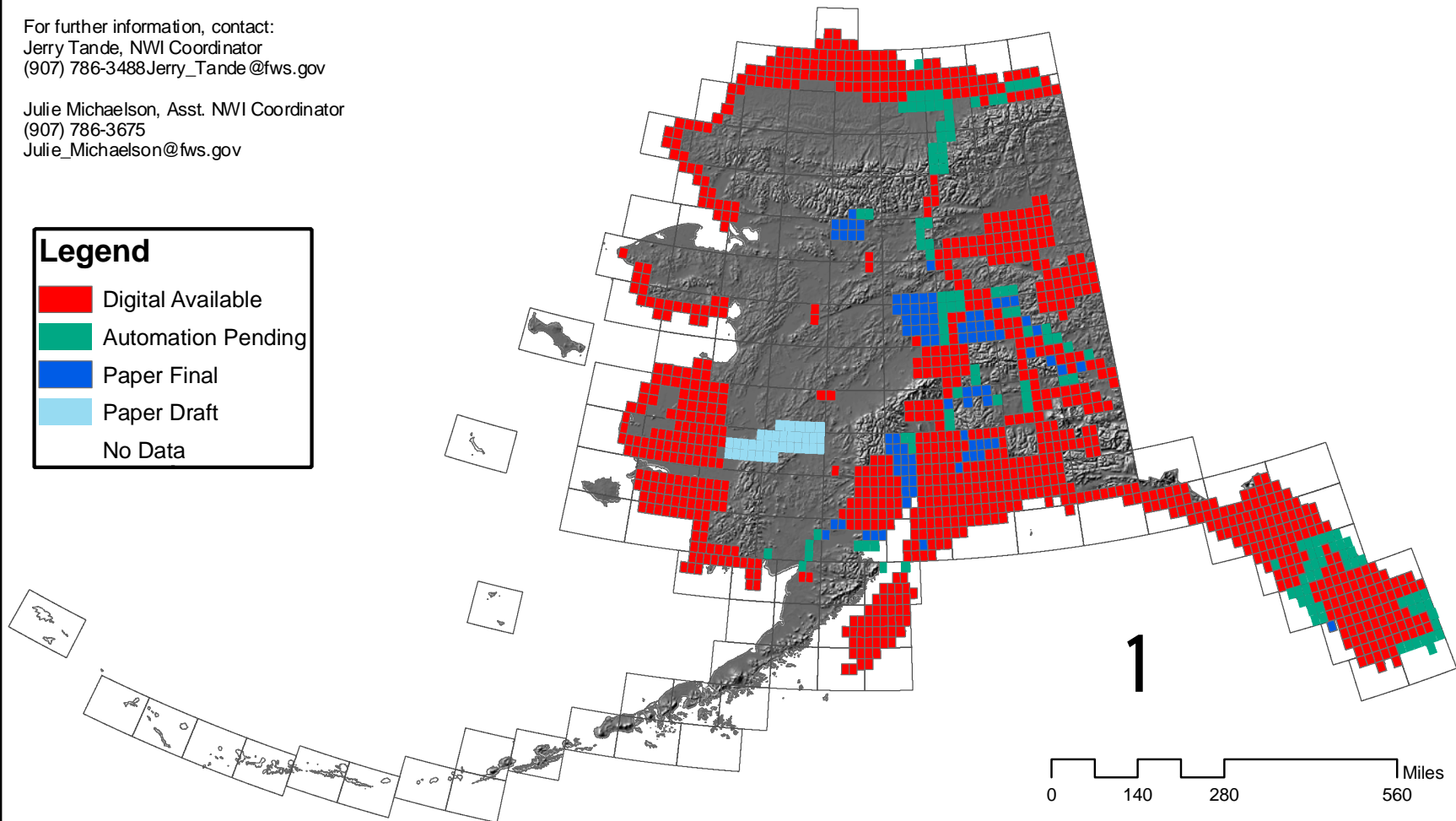
Julie Michaelson, Asst. NWI Coordinator
(907) 786-3675
Julie_Michaelson@fws.gov

Legend

- Digital Available
- Automation Pending
- Paper Final
- Paper Draft
- No Data



National Wetlands Inventory U.S. Fish and Wildlife Service, Alaska Region April 2011



R7 NWI 2011