

Parkway Chronicle

Feasibility Study of Widening the Baltimore-Washington Parkway is Under Way

The Federal Highway Administration (FHWA) Eastern Federal Lands Highway Division (EFLHD) has initiated a study to assess the feasibility of widening the Baltimore-Washington Parkway (Maryland Route 295). Specifically, the study will consider the costs and benefits of adding a third northbound and a third southbound lane along the Parkway from the interchange with I-695 in Anne Arundel County, Maryland to New York Avenue in the District of Columbia.

The study is the result of legislative language included in Fiscal Year 2010 Appropriations legislation sponsored by Congressman C. A. Dutch Ruppersberger, Maryland District 2, directing the FHWA to work with the National Park Service (NPS) and the Maryland State Highway Administration (SHA) to determine the feasibility of such a widening. The study will include an assessment of the impact of the Base Realignment and Closure (BRAC) process on traffic throughout the Maryland Route 295

corridor between Baltimore, MD and Washington, DC.

Feasibility will be assessed against environmental, economic, and engineering factors and transportation system performance, as well as the specific concerns of Parkway users and other regional stakeholders. The study team intends to engage communities that surround the Parkway in the study process to identify their preferences and concerns related to a widening of the roadway and to share different design and operational concepts with them.

There will be three public meetings over the course of this 9-month study, with the first to be held on July 20, 2011. All interested parties are encouraged to attend and participate. The study team would like to hear from the public how they use the Parkway, what they like about the current roadway, what they would like to change, and their thoughts on the appropriateness of widening. Please join us!



Photo by: Adam Elmquist

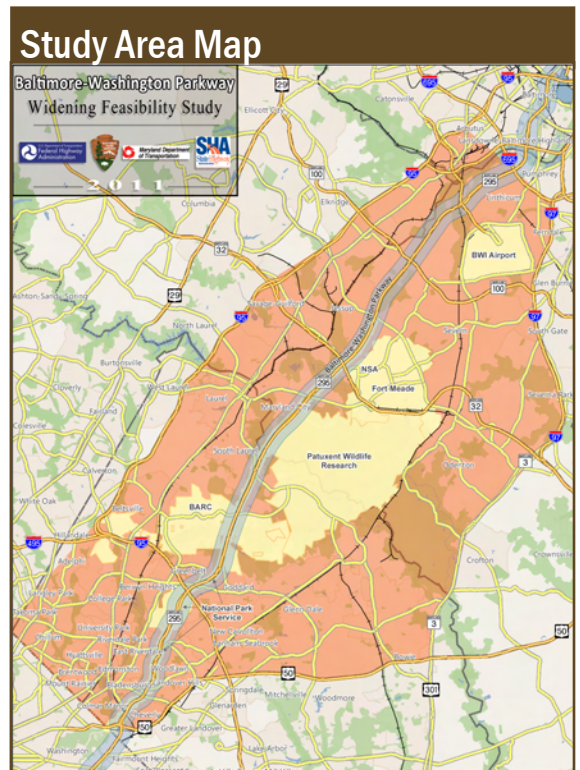


Photo from NPS website

Important Updates

1st Public Meeting is Coming Up! Get Involved!

July 20, 2011

6:30 p.m. - 8:30 p.m.

ATTENTION AREA RESIDENTS, COMMUTERS, EMPLOYERS, AND BUSINESS PEOPLE!!

The Federal Highway Administration (FHWA)
invites you to join us at the first public meeting for the...

Baltimore-Washington Parkway Widening Feasibility Study

JULY 20, 2011

6:30 p.m. - 8:30 p.m.

Meade Middle School
1103 26th Street
Ft. Meade, MD 20755

For more information:

Lewis Grimm | lewis.grimm@dot.gov
FHWA – Eastern Federal Lands Highway Division
703.404.6289

FHWA is committed to ensuring that no person is excluded from participation in, or denied the benefits of, its projects, programs, and services on the basis of race, color, national origin, or gender, as provided by Title VI of the Civil Rights Act of 1964 or on the basis of disability as provided by the Americans with Disabilities Act. If you need special accommodations or language assistance services (translation or interpretation) please contact Eduardo Maeyama at (202) 661-5329 or by email at Maeyama@pbworld.com at least five (5) days in advance of the meeting. These services will be provided free of charge.

FHWA - Eastern Federal Lands Highway Division
21400 Ridgetop Circle
Sterling, VA 20166



This study will examine the feasibility of adding a third northbound and a third southbound lane to the Baltimore-Washington Parkway (MD Route 295) between its interchange with I-695 in Anne Arundel County, MD and New York Avenue in the District of Columbia. During this meeting, the project team will introduce the study and gather the public's input on study goals and objectives.

