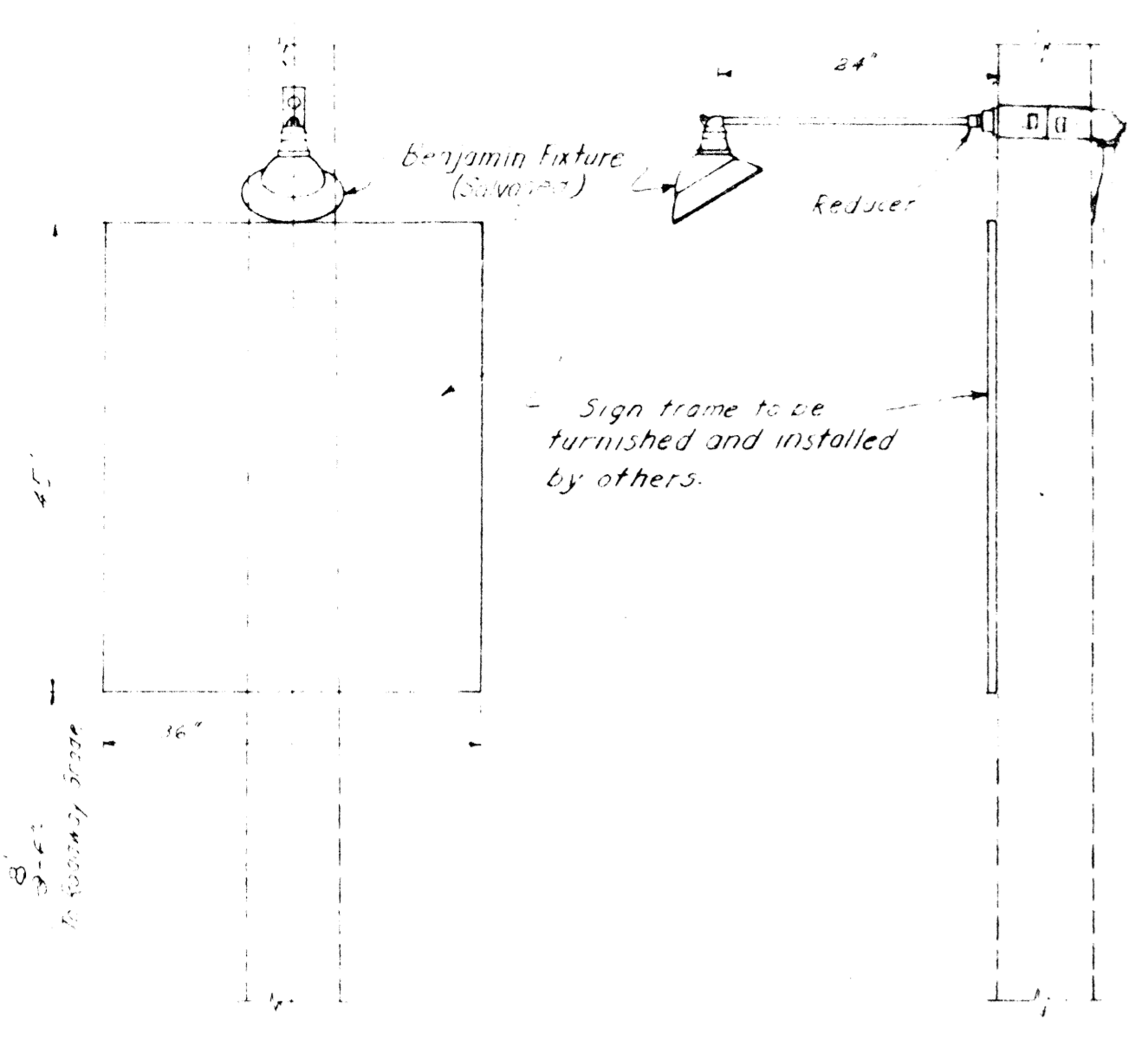
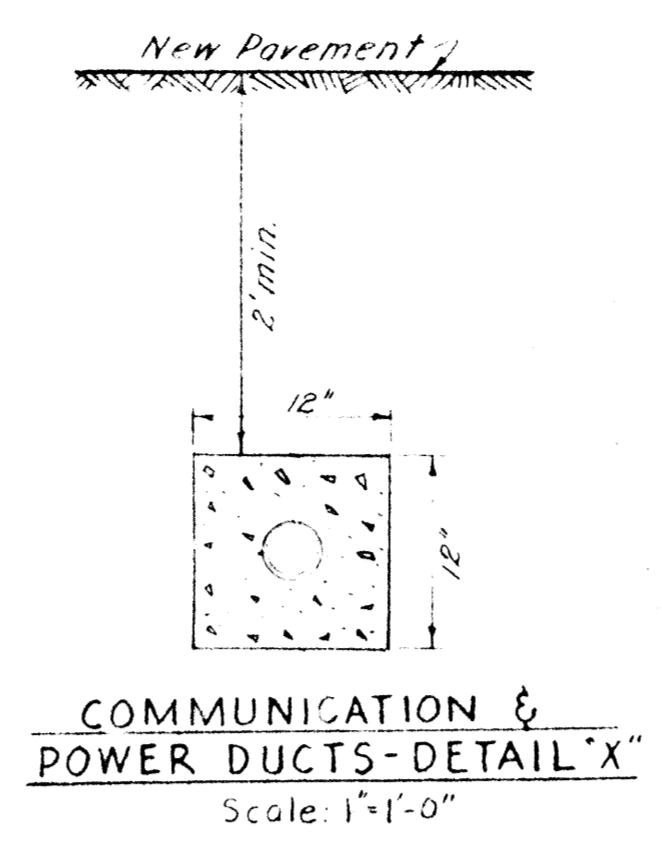


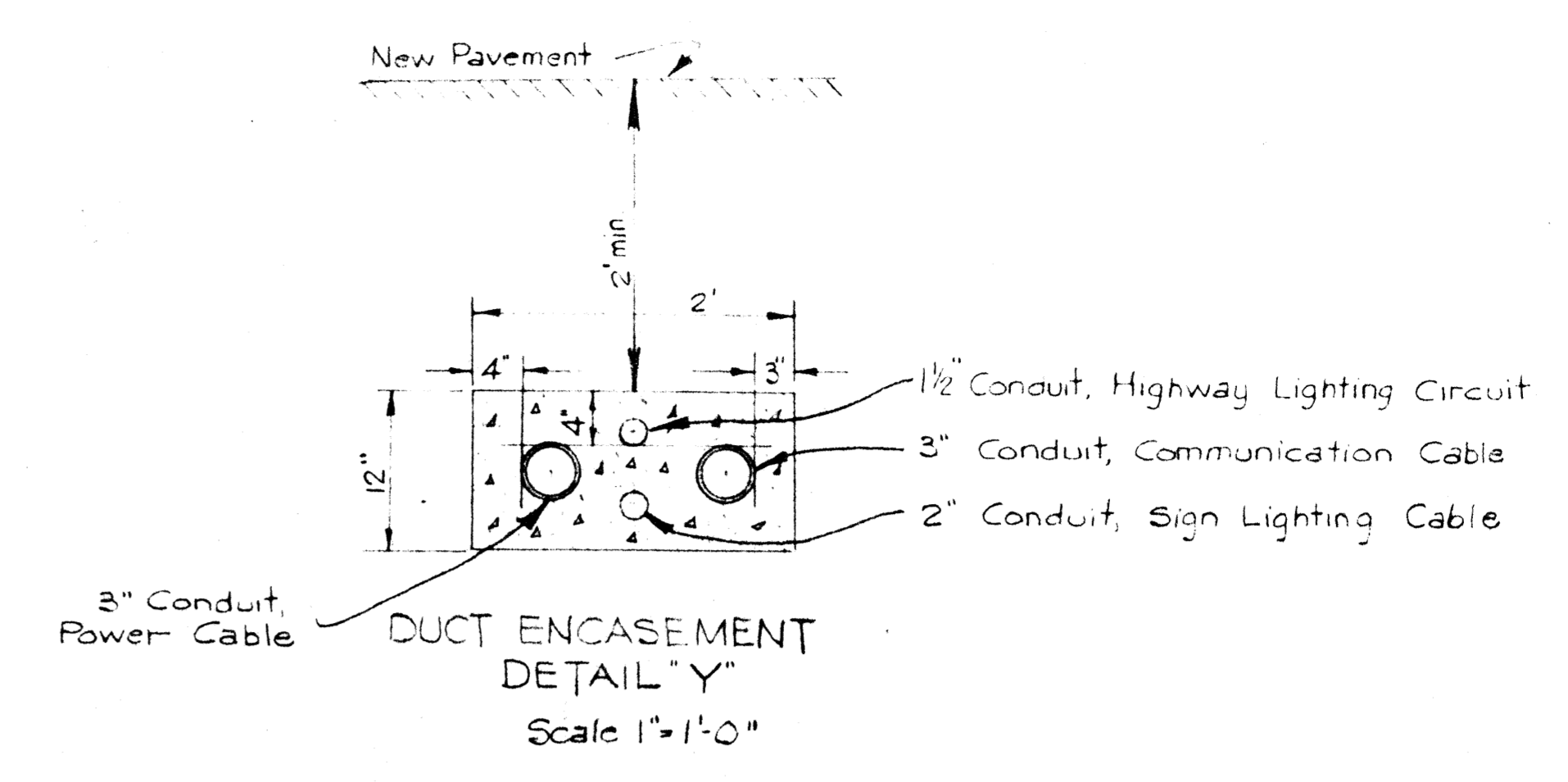
APPROVED: June 14, 1954
 S. M. 11566



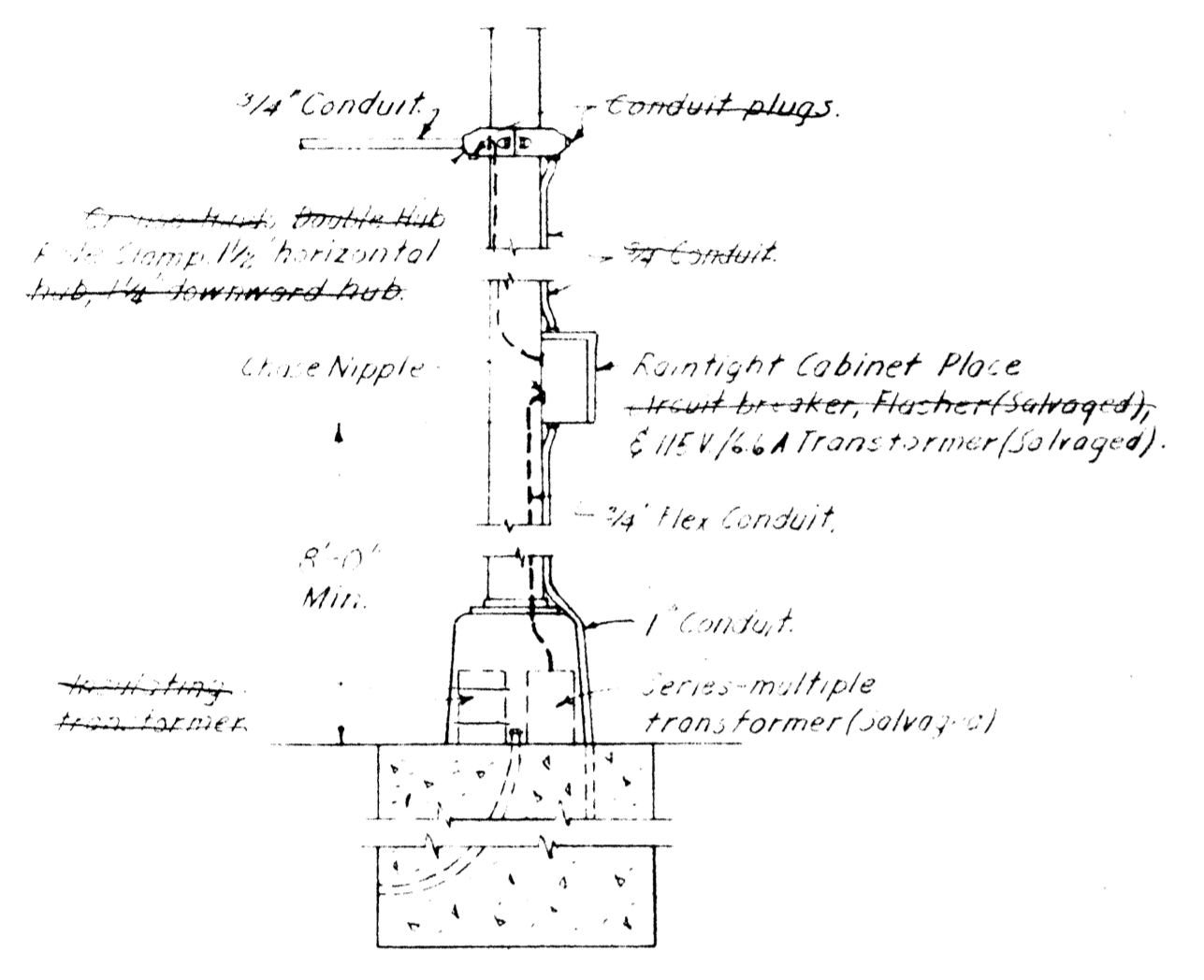
SIGN LIGHTING FIXTURE
 Scale: 3/4" = 1'-0"



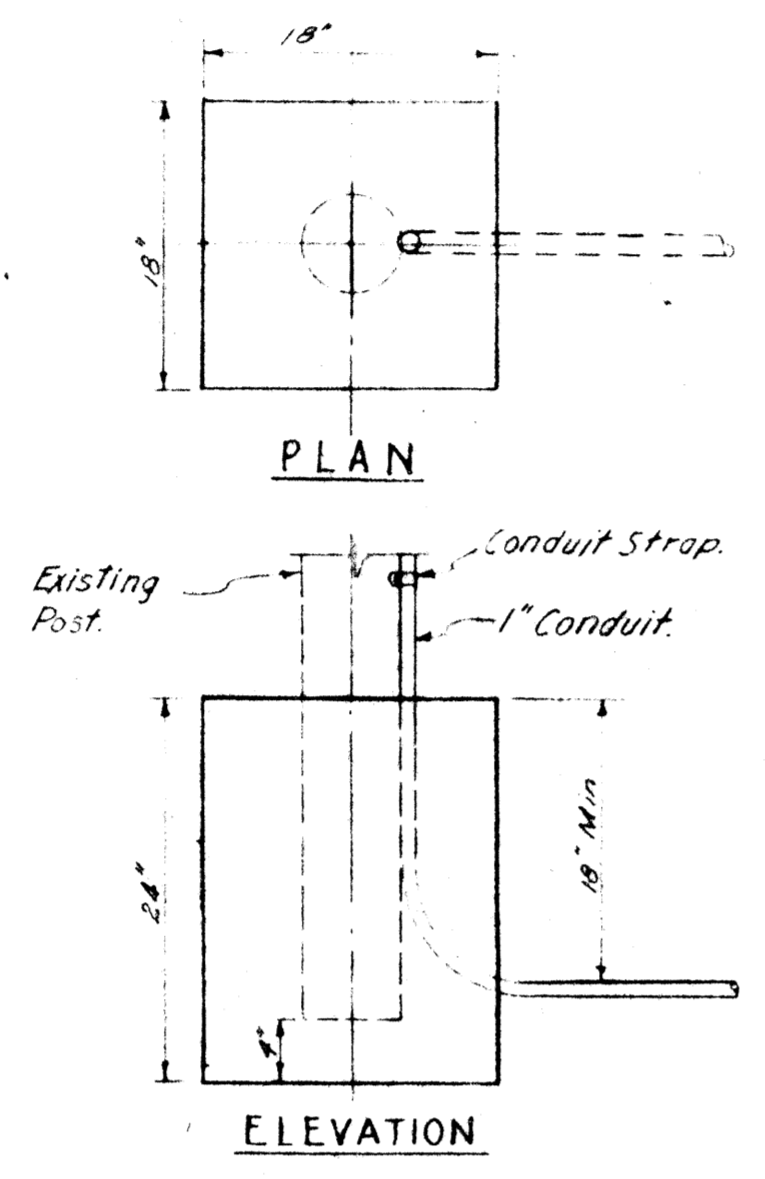
COMMUNICATION & POWER DUCTS-DETAIL 'X'
 Scale: 1" = 1'-0"



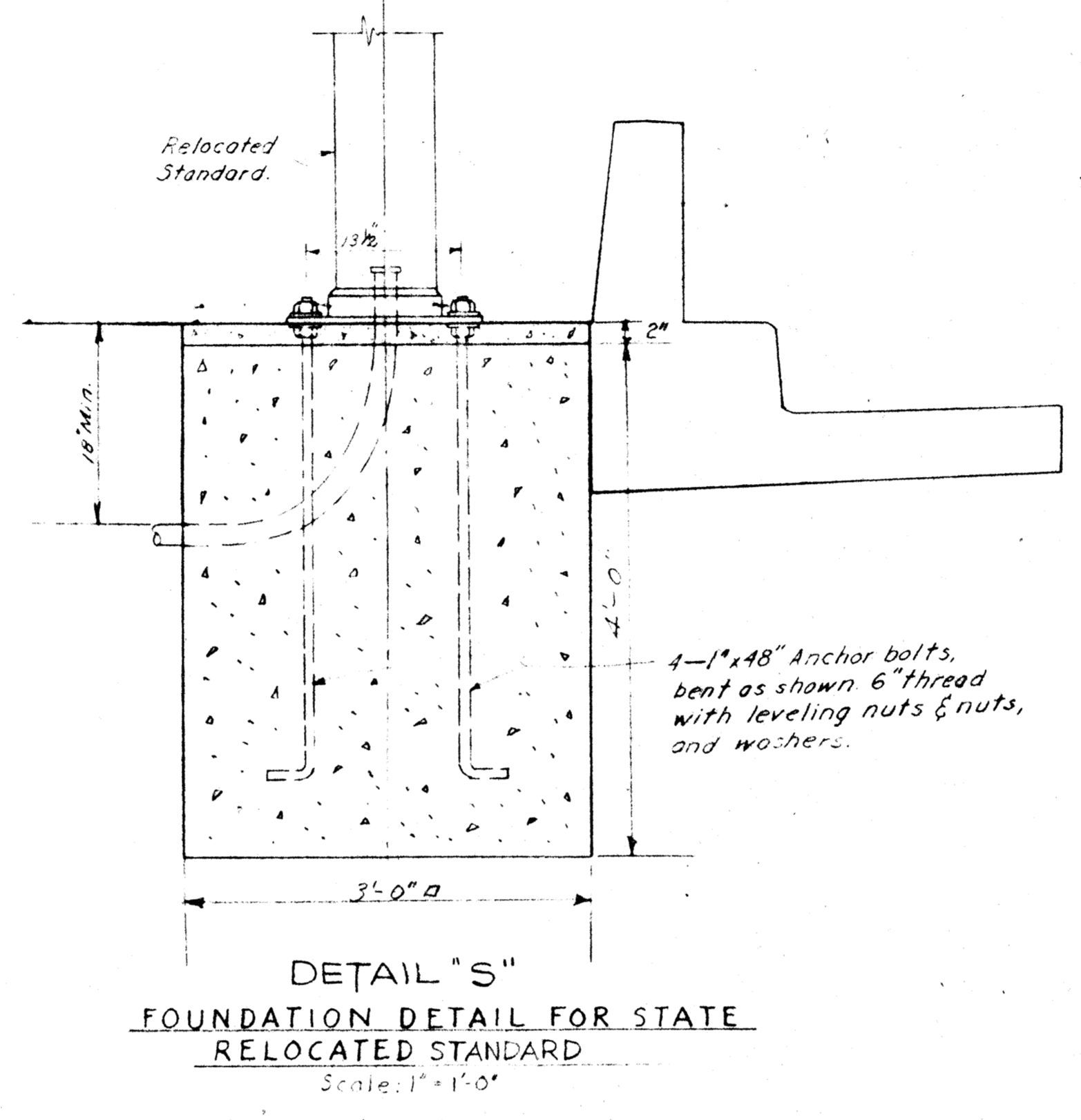
DUCT ENCASEMENT DETAIL 'Y'
 Scale: 1" = 1'-0"



DETAIL OF POLE
 Scale: 1/2" = 1'-0"

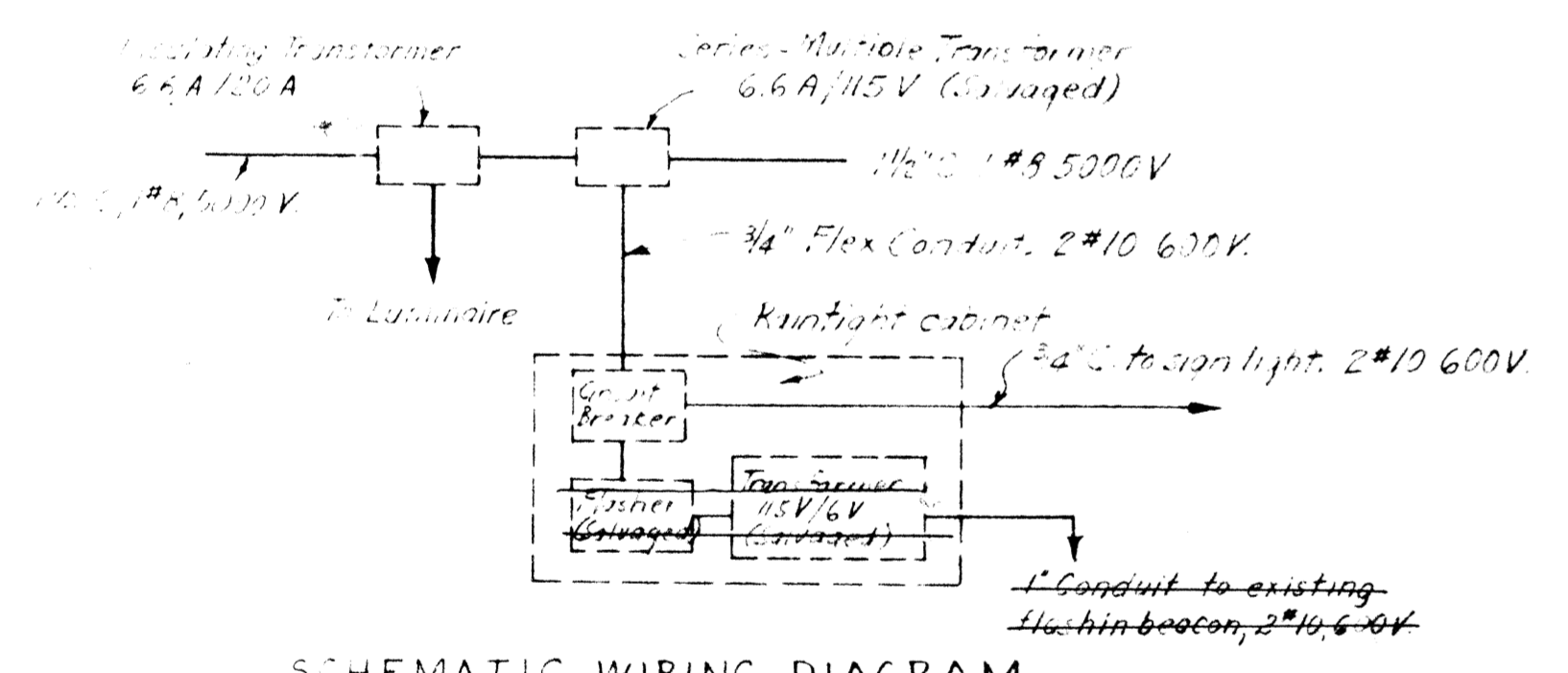


TYPICAL NEW SIGN FOUNDATION
 Scale: 1" = 1'-0"



FOUNDATION DETAIL FOR STATE RELOCATED STANDARD
 Scale: 1" = 1'-0"

Note: All bolts, nuts and washers, shall be hot dipped galvanized.



SCHEMATIC WIRING DIAGRAM
 DETAIL 'A'

ELECTROLIER RT. STA. 6+64

CONTRACT No. 55-42C1
 DATE ACCEPTED AUG 6 1955
AS BUILT
 RESIDENT ENGINEER J.B. Watson
 REVISIONS BY H. DATE 8-1-55

NO.	DATE	DESCRIPTION	BY
4			
3			
2			
1			

TABLE OF REVISIONS

ELECTRICAL DETAILS

DRAWN BY	DATE	CHECKED BY	DATE
SCALE		DRAWING NO.	