



# Febrile Respiratory Illness (FRI) Surveillance Update

Operational Infectious Diseases  
Naval Health Research Center, San Diego, CA



Week 6 (through 9 February 2013)

## Contact Information

Address:  
Commanding Officer  
Attn: Code 166  
Naval Health Research Center  
140 Sylvester Rd.  
San Diego, CA 92106

Web:  
[www.med.navy.mil/sites/nhrc/geis](http://www.med.navy.mil/sites/nhrc/geis)

Email: [NHRC-FRI@med.navy.mil](mailto:NHRC-FRI@med.navy.mil)

## Influenza

NHRC Laboratory-Confirmed Influenza Cases, US Military Basic Trainees

Site	Current Week*				2012-13			
	A/ Untyp.	A/H3	A/H1N1	B	A/ Untyp.	A/H3	A/H1N1	B
Ft. Benning								
Ft. Jackson					10		2	4
Ft. Leonard Wood					3			
NRTC Great Lakes		3			8			
Lackland AFB					4			
MCRD Parris Island					1		15	
MCRD San Diego					9			
CGTC Cape May								
<b>Total</b>	<b>0</b>	<b>3</b>	<b>0</b>	<b>0</b>	<b>0</b>	<b>35</b>	<b>17</b>	<b>4</b>

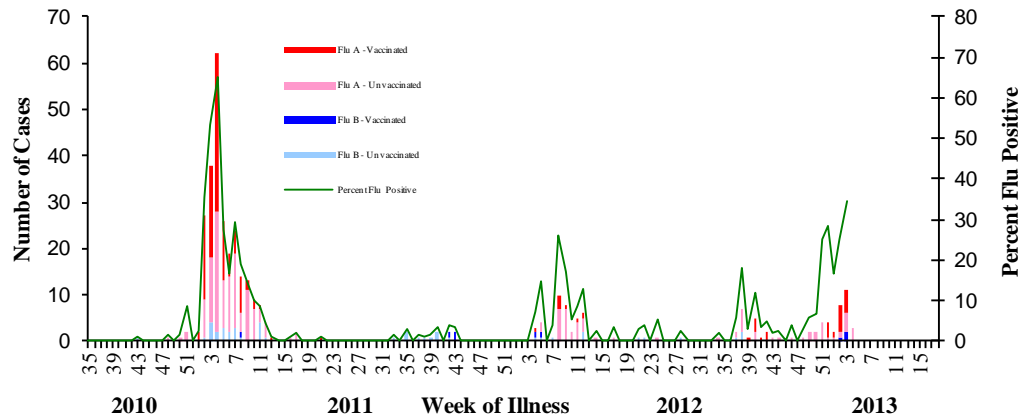
Note: New cases occurred in week 4; none were vaccinated more than 14 days prior to illness.

- NHRC also conducts shipboard FRI surveillance that includes large-deck ships of the 2<sup>nd</sup> (Atlantic), 3<sup>rd</sup> (Pacific), and 7<sup>th</sup> (Far East) Fleets.
- NHRC-CDC-BIDS collaborative border FRI/SARI surveillance program is ongoing at 11 US-Mexico border sites in the counties of San Diego, CA (2), Imperial, CA (5) and Pima, AZ (4).
- Influenza isolates and data from basic training, shipboard, and border surveillance are shared with the CDC.
- For more information about shipboard or border FRI surveillance, please [contact NHRC](#).

## Items of Note

- FRI rates at all basic training centers are at or below expected values
- Increase in influenza activity at basic training centers from mid-January into February

Vaccination Status of Confirmed Influenza Cases Among Military Basic Trainees, 2010-13

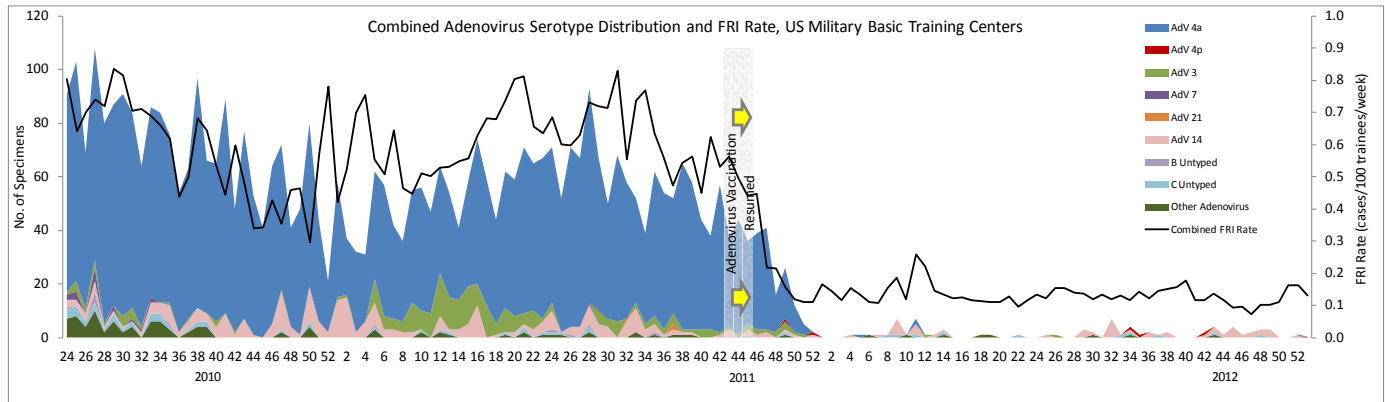


## Other Items of Interest

- NHRC is conducting laboratory-based surveillance for meningococcal disease. The program's purpose is to track and characterize meningococcal cases among DoD medical beneficiaries. For more information and the most recent data, [click here](#).

**Adenovirus**

- Vaccination against types 4 and 7 adenovirus was instituted at all basic training centers by mid-November 2011 (week 45).
- FRI rates and the proportion of FRI cases positive for adenovirus have decreased markedly since vaccine was reintroduced.
- Type 14 adenovirus cases continue at MCRD Parris Island, though FRI rates remain low



**FRI Rates**

- FRI surveillance is ongoing at 8 U.S. military basic training centers, representing all service branches. As each week’s FRI count is reported, [FRI Rate Status](#) is classified into one of 3 categories:
  - At or below expected value (expected value shown as dashed line)
  - Moderately elevated
  - Substantially elevated

Week ending 9 February 2013:

- **At or below expected value:**

- [Fort Benning](#)
- [Fort Jackson](#)
- [Fort Leonard Wood](#)
- [Naval Recruit Training Command, Great Lakes](#)
- [Marine Corps Recruit Depot, San Diego](#)
- [Marine Corps Recruit Depot, Parris Island](#)
- [Lackland Air Force Base](#) (Data through 2 Feb.)
- [Coast Guard Training Center, Cape May](#)

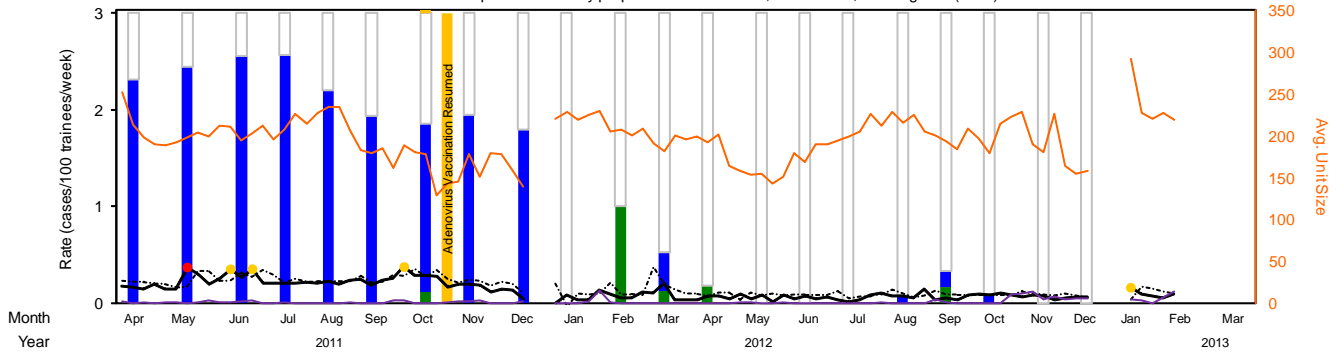
• **Moderately elevated:**

None

• **Substantially elevated:**

None

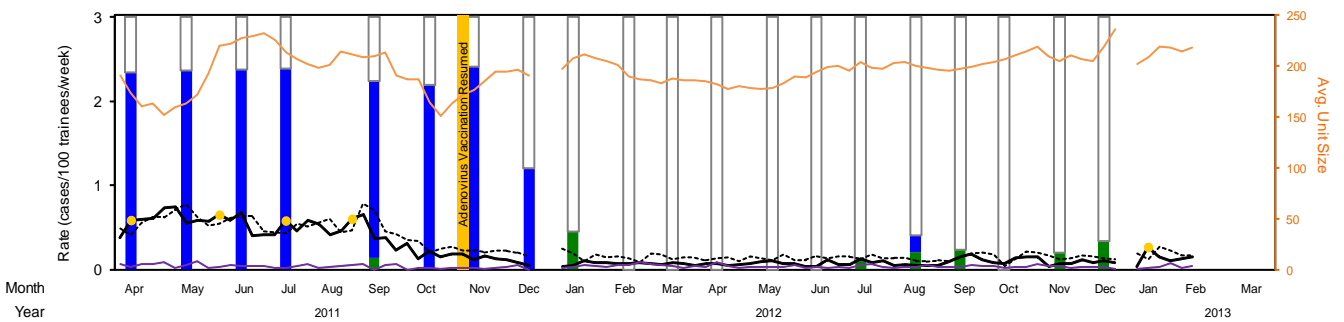
Ft. Benning FRI Rates and Diagnostic Test Results  
 Shaded bars represent monthly proportions of Influenza, Adenovirus, and negative (clear) results



Samples Received	66	65	68	62	68	62	50	40	15	10	24	23	17	15	14	23	38	18	35	16	10
Adenovirus Positive	77%	82%	85%	85%	74%	65%	58%	65%	60%	0%	0%	13%	0%	0%	0%	0%	3%	6%	3%	0%	0%
Flu Positive	0%	0%	0%	0%	0%	0%	4%	0%	0%	0%	33%	4%	6%	0%	0%	0%	0%	6%	0%	0%	0%
AdV Subtype	4	10%	57%	91%	89%	94%	98%	100%	100%	100%											
	7				2%																
	14		2%																		
	21																				
	3	90%	38%	5%	8%	6%	3%					33%									
	C		4%	3%	2%							67%					100%	100%	100%		
Flu Subtype							100%											100%			
B																					
H1																					
H3											88%	100%	100%								
pH1N1											13%										
Untyped																					

[Back to FRI Report](#)

Ft. Jackson FRI Rates and Diagnostic Test Results  
 Shaded bars represent monthly proportions of Influenza, Adenovirus, and negative (clear) results

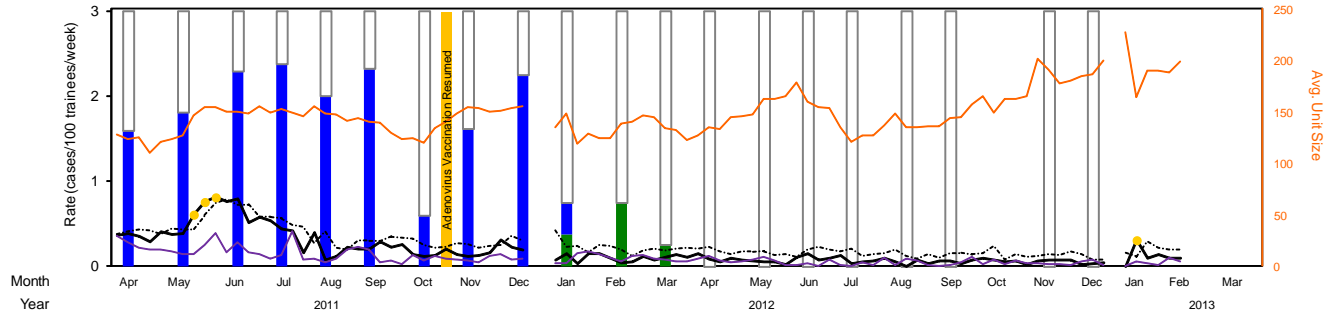


Samples Received	64	76	86	39	0	47	63	41	10	34	20	26	23	27	14	30	15	26	28	15	9	
Adenovirus Positive	78%	79%	79%	79%		70%	73%	80%	40%	0%	0%	0%	0%	0%	0%	0%	0%	7%	0%	0%	0%	0%
Flu Positive	0%	0%	0%	0%		4%	0%	0%	0%	15%	0%	0%	0%	0%	0%	3%	7%	8%	0%	7%	11%	
AdV Subtype	4	98%	100%	99%		100%	100%	70%	75%													
	7																					
	14																					
	21																					
	3	2%						27%	25%													
	C			1%	3%			3%									100%					
Flu Subtype						100%				80%						100%		100%				
B																						
H1																						
H3										20%												
pH1N1																				100%	100%	
Untyped																						

[Back to FRI Report](#)

- At or below expected value (expected = dashed line)    ● Moderately elevated    ● Substantially elevated    — Pneumonia rate (incl. afebrile)

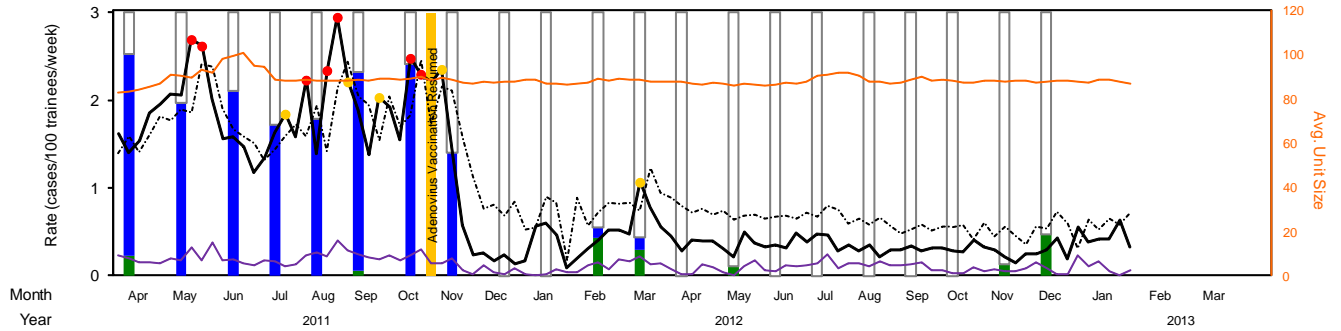
Ft. Leonard Wood FRI Rates and Diagnostic Test Results  
 Shaded bars represent monthly proportions of Influenza, Adenovirus, and negative (clear) results



Year	Month	Samples Received	Adenovirus Positive	Flu Positive	AdV Subtype	Flu Subtype	
2011	Apr	45	53%	0%	4		
	May	43	60%	0%	7		
	Jun	51	76%	0%	14		
	Jul	39	79%	0%	21		
	Aug	27	67%	0%	3		
	Sep	31	77%	0%	C		
	Oct	10	20%	0%			
	Nov	13	54%	0%			
	Dec	8	75%	0%			
	2012	Jan	8	13%	13%		
		Feb	4	0%	25%		100%
		Mar	12	0%	8%		100%
Apr		7	0%	0%			
May		5	0%	0%			
Jun		2	0%	0%			
Jul		6	0%	0%			
Aug		5	0%	0%			
Sep		3	0%	0%			
Oct		0	0%	0%			
2013	Jan	3	0%	0%			
	Feb	4	0%	0%			

[Back to FRI Report](#)

NRTC Great Lakes FRI Rates and Diagnostic Test Results  
 Shaded bars represent monthly proportions of Influenza, Adenovirus, and negative (clear) results

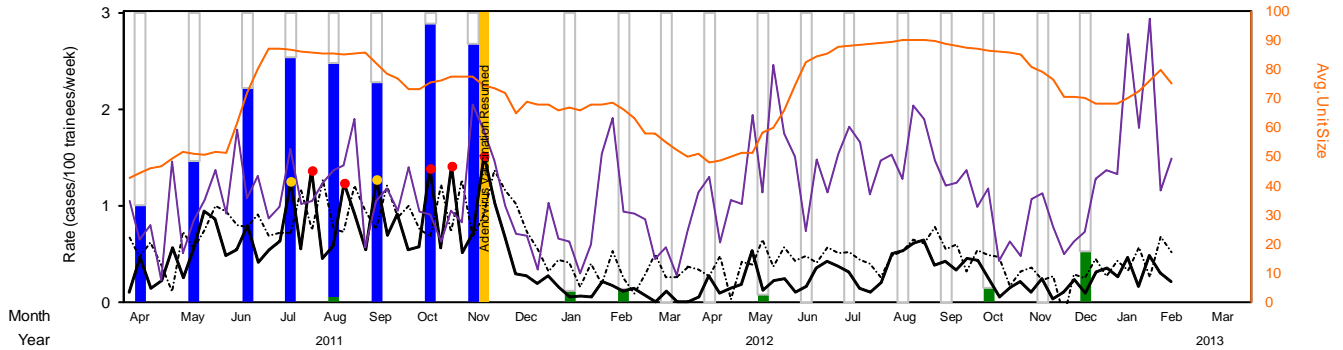


Year	Month	Samples Received	Adenovirus Positive	Flu Positive	AdV Subtype	Flu Subtype	
2011	Apr	38	76%	8%	4		
	May	35	66%	0%	7		
	Jun	47	70%	0%	14		
	Jul	47	57%	0%	21		
	Aug	62	60%	0%	3		
	Sep	44	75%	2%	C		
	Oct	36	81%	0%			
	Nov	17	47%	0%			
	Dec	5	0%	0%			
	2012	Jan	24	0%	0%		
		Feb	27	4%	15%		100%
		Mar	40	5%	10%		100%
Apr		23	0%	0%			
May		27	0%	4%			
Jun		19	0%	0%			
Jul		16	0%	0%			
Aug		28	0%	0%			
Sep		18	0%	0%			
Oct		27	0%	0%			
2013	Jan	22	0%	5%		100%	
	Feb	25	0%	16%		100%	

[Back to FRI Report](#)

— At or below expected value (expected = dashed line)    ● Moderately elevated    ● Substantially elevated    — Pneumonia rate (incl. afebrile)

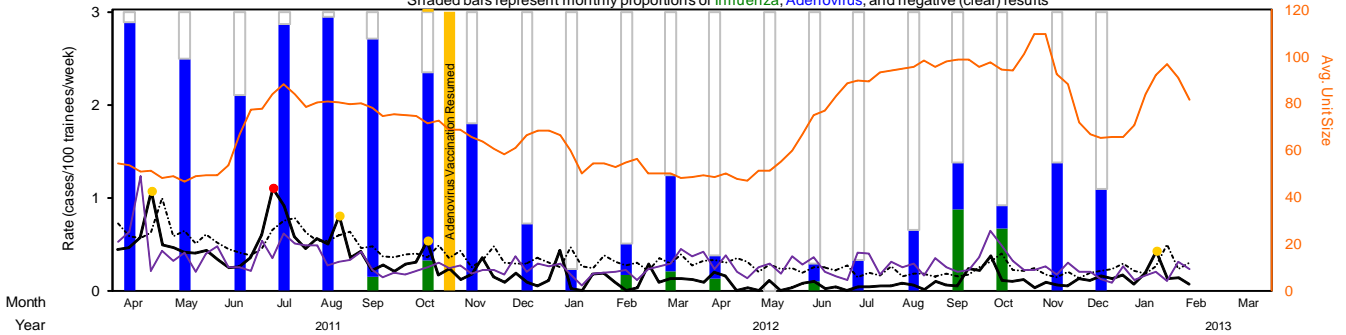
MCRD San Diego FRI Rates and Diagnostic Test Results  
 Shaded bars represent monthly proportions of Influenza, Adenovirus, and negative (clear) results



Month	Year	Samples Received	Adenovirus Positive	Flu Positive	AdV Subtype	Flu Subtype
Apr	2011	36	33%	0%	4	
May	2011	37	49%	0%	7	
Jun	2011	46	74%	0%	14	
Jul	2011	64	84%	0%	21	
Aug	2011	68	81%	1%	3	B 100%
Sep	2011	62	76%	0%	7	
Oct	2011	53	96%	0%	14	
Nov	2011	56	89%	0%	21	
Dec	2011	0	0%	0%	3	
Jan	2012	29	0%	3%	C	
Feb	2012	24	0%	4%		H1 100%
Mar	2012	17	0%	0%		
Apr	2012	27	0%	0%		
May	2012	44	0%	2%		
Jun	2012	40	0%	0%		
Jul	2012	46	0%	0%		
Aug	2012	61	0%	0%		
Sep	2012	47	0%	0%		
Oct	2012	43	0%	5%		
Nov	2012	23	0%	0%		
Dec	2012	23	0%	17%		H3 100%
Jan	2013					
Feb	2013					Untyped

[Back to FRI Report](#)

MCRD Parris Island FRI Rates and Diagnostic Test Results  
 Shaded bars represent monthly proportions of Influenza, Adenovirus, and negative (clear) results

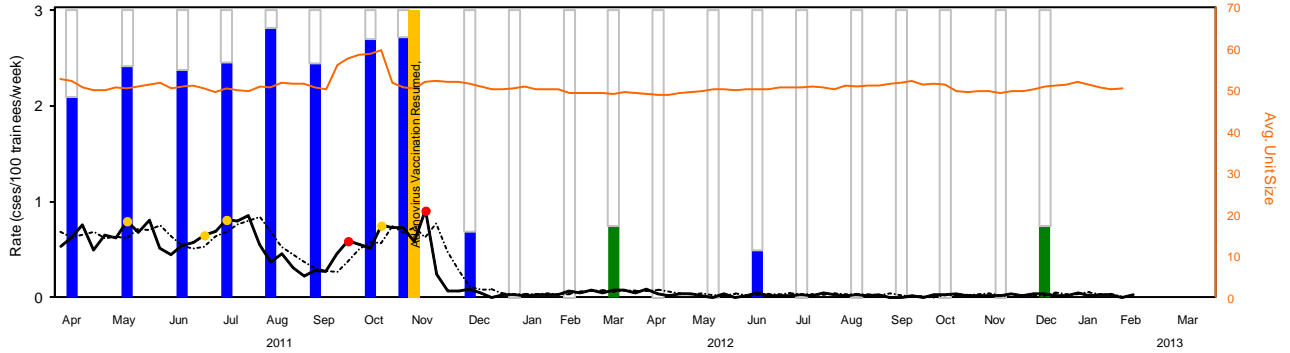


Month	Year	Samples Received	Adenovirus Positive	Flu Positive	AdV Subtype	Flu Subtype
Apr	2011	53	96%	0%	4	
May	2011	36	83%	0%	7	
Jun	2011	40	70%	0%	14	
Jul	2011	66	95%	0%	21	
Aug	2011	58	98%	0%	3	B 100%
Sep	2011	42	86%	5%	7	
Oct	2011	37	68%	11%	14	
Nov	2011	25	60%	0%	21	
Dec	2011	25	24%	0%	3	
Jan	2012	13	8%	0%	C	
Feb	2012	18	11%	6%		H1 100%
Mar	2012	29	34%	7%		
Apr	2012	24	8%	4%		
May	2012	13	0%	0%		
Jun	2012	31	6%	3%		
Jul	2012	37	11%	0%		
Aug	2012	37	22%	0%		
Sep	2012	24	17%	29%		
Oct	2012	36	8%	22%		
Nov	2012	24	46%	0%		
Dec	2012	24	36%	0%		
Jan	2013					
Feb	2013					Untyped

[Back to FRI Report](#)

— At or below expected value (expected = dashed line)    ● Moderately elevated    ● Substantially elevated    — Pneumonia rate (incl. afebrile)

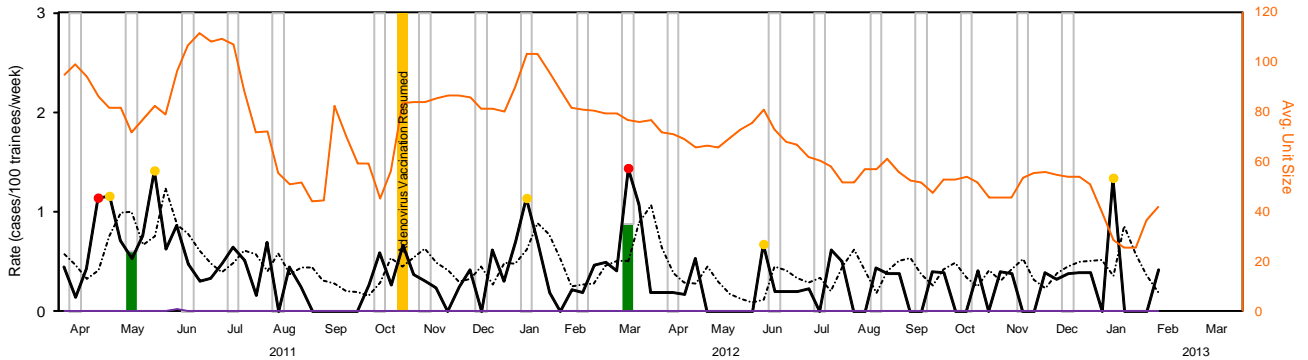
Lackland AFB FRI Rates and Diagnostic Test Results  
 Shaded bars represent monthly proportions of Influenza, Adenovirus, and negative (clear) results



Month	Year	Samples Received	Adenovirus Positive	Flu Positive	AdV Subtype	Flu Subtype
Apr	2011	43	70%	0%	4	
May	2011	46	80%	0%	7	
Jun	2011	53	79%	0%	14	
Jul	2011	60	82%	0%	21	
Aug	2011	31	94%	0%	3	
Sep	2011	43	81%	0%	C	
Oct	2011	58	90%	0%		
Nov	2011	52	90%	0%		
Dec	2011	13	23%	0%		
Jan	2012	6	0%	0%		
Feb	2012	1	0%	0%		
Mar	2012	16	0%	25%		100%
Apr	2012	7	0%	0%		
May	2012	7	0%	0%		
Jun	2012	6	17%	0%		
Jul	2012	3	0%	0%		
Aug	2012	5	0%	0%		
Sep	2012	7	0%	0%		
Oct	2012	13	0%	0%		
Nov	2012	5	0%	0%		
Dec	2012	12	0%	25%		100%
Jan	2013					
Feb	2013					
Mar	2013					

[Back to FRI Report](#)

CGTC Cape May FRI Rates and Diagnostic Test Results  
 Shaded bars represent monthly proportions of Influenza, Adenovirus, and negative (clear) results



Month	Year	Samples Received	Adenovirus Positive	Flu Positive	AdV Subtype	Flu Subtype
Apr	2011	16	0%	0%	4	
May	2011	5	0%	20%	7	
Jun	2011	12	0%	0%	14	
Jul	2011	11	0%	0%	21	
Aug	2011	7	0%	0%	3	
Sep	2011	0	0%	0%	C	
Oct	2011	6	0%	0%		
Nov	2011	4	0%	0%		
Dec	2011	2	0%	0%		
Jan	2012	7	0%	0%		
Feb	2012	5	0%	0%		
Mar	2012	17	0%	29%		100%
Apr	2012	5	0%	0%		
May	2012	0	0%	0%		
Jun	2012	6	0%	0%		
Jul	2012	4	0%	0%		
Aug	2012	2	0%	0%		
Sep	2012	2	0%	0%		
Oct	2012	3	0%	0%		
Nov	2012	1	0%	0%		
Dec	2012	1	0%	0%		
Jan	2013					
Feb	2013					
Mar	2013					

[Back to FRI Report](#)

- At or below expected value (expected = dashed line)    ● Moderately elevated    ● Substantially elevated    — Pneumonia rate (incl. afebrile)