

## PROJECT SCHEDULE

Project Scoping	Complete
Data Collection	Complete
Alternatives Development / Citizen Information Meeting	Complete
Environmental Assessment / Citizen Information Meeting	<b>WE ARE HERE</b>
Final Decision on the Environmental Assessment by FHWA	Summer 2012

## NEXT STEPS

- Study team review of public comments.
- Revision of EA, as appropriate, to reflect changes or new information resulting from comments received on the EA.
- FHWA Decision.

## THANK YOU

Thank you for taking the time to review the materials presented at this public meeting. Your comments are valuable and greatly appreciated. FHWA will carefully consider all comments received at this meeting and during the comment period.

You may leave your comments in the box provided at tonight's meeting. You may also record your comments orally at the designated recording station.

If you are not ready to provide your comments tonight, written comments must be postmarked or sent electronically **no later than July 6, 2012**:

By Mail: Mr. Jack Van Dop  
Environmental Specialist  
Federal Highway Administration  
Eastern Federal Lands Highway Division  
21400 Ridgeway Circle  
Sterling, VA 20166

By E-mail: Jack.VanDop@dot.gov

## FOR PROJECT UPDATES

Please visit FHWA's website, <http://www.efl.fhwa.dot.gov/projects/environment.aspx>, or contact one of our project team members:

Jack Van Dop at Jack.VanDop@dot.gov

Ryan Kimberley at Ryan.Kimberley@dot.gov

*FHWA ensures non-discrimination in all programs and activities in accordance with Title VI of the Civil Rights Act of 1964. For further information, contact: FHWA, Office of Civil Rights, 1200 New Jersey Avenue, SE, 8th Floor, E81-314, Washington, DC 20590 or telephone (202) 366-0693 or CivilRights.FHWA@fhwa.dot.gov*

# ROUTE 1 IMPROVEMENTS AT FORT BELVOIR

June 5, 2012

## PUBLIC INFORMATION MEETING

# WELCOME!

## PROJECT OVERVIEW

The Federal Highway Administration, in cooperation with the U.S. Army Garrison Fort Belvoir, Fairfax County, and the Virginia Department of Transportation (VDOT), is completing studies for improvements to Route 1 in Fairfax County between Telegraph Road and Mount Vernon Memorial Highway. The following tasks were conducted as part of the study:

- Characterized existing conditions in the study area and identified transportation problems and needs. An extensive traffic count program was conducted to evaluate existing operations and traffic forecasts were prepared for the design year of 2040 to assess future conditions.
- Identified and evaluated the effectiveness of alternatives to improve mobility, capacity, safety, and other travel conditions on Route 1 within the study limits.
- Studied the impacts of alternatives on human, historic, and natural resources.
- Complied with the National Environmental Policy Act (NEPA) and other regulatory programs, such as the National Historic Preservation Act.



## PURPOSE AND NEED

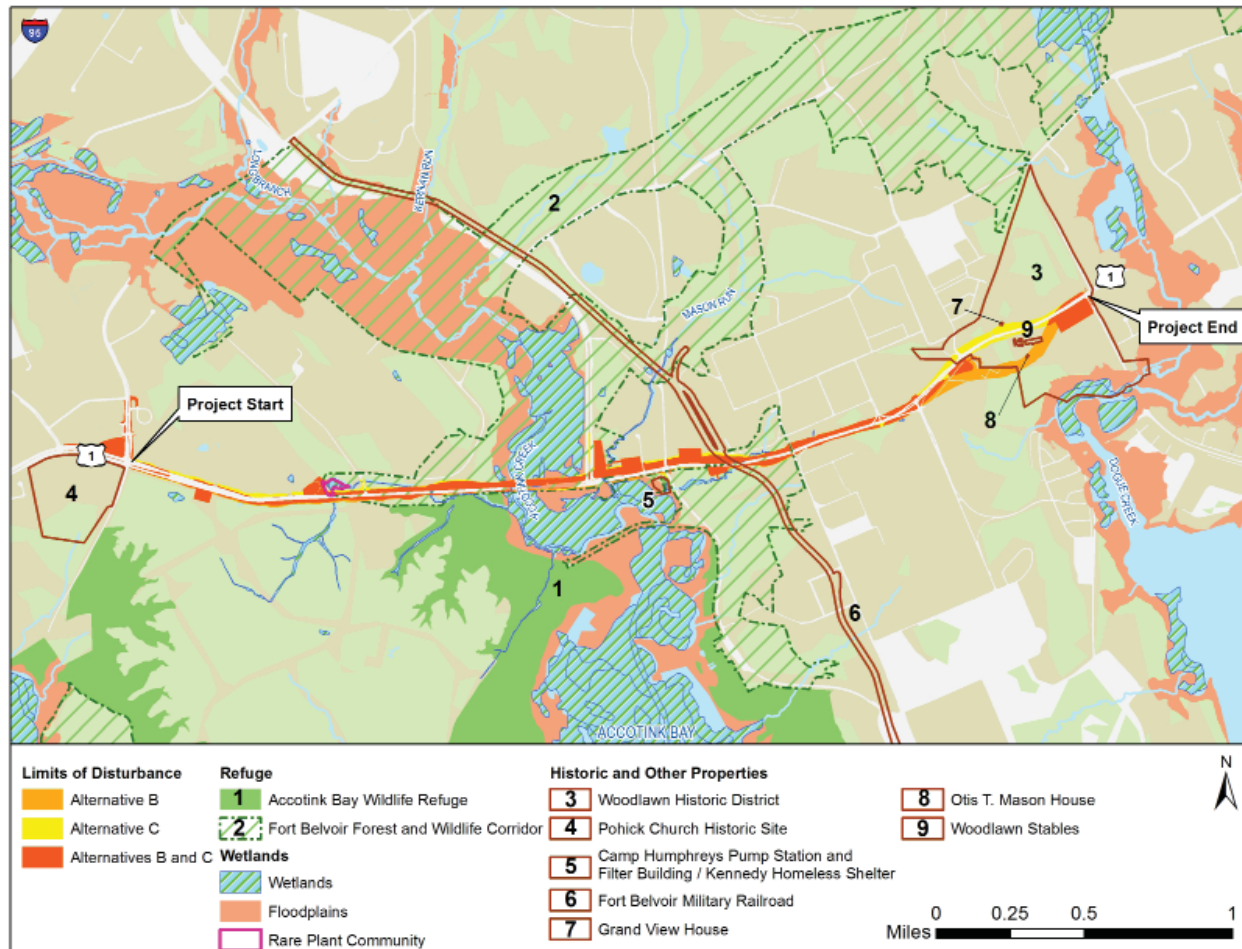
### Purpose:

- The purpose of the project is to address traffic capacity deficiencies on Route 1 within the study limits.

### Need:

- The project will address:
  - Inability of existing roadway to accommodate current and forecasted traffic demand
    - Inadequate accommodations for high turning movement volumes (e.g., between Fairfax County Parkway and Pohick Road/Tulley Gate)
    - Conflicts between through and turning traffic (into property entrances, intersecting streets)
  - Physical and geometric deficiencies of existing roadway
    - Deficient geometry (e.g., narrow lanes, short turn lanes)
    - Lack of pedestrian and bicycle facilities
    - Safety concerns (e.g., pedestrian/ bicyclist access, lack of shoulders)

## ENVIRONMENTAL RESOURCES WITHIN STUDY AREA



## SUMMARY OF ENVIRONMENTAL IMPACTS

Environmental consequences are reported in the EA for the No-Build Alternative (Alternative A) and Build Alternatives B and C within the study area, which includes the lands adjacent to Route 1 and the intersecting roadways where they cross Route 1 as well as the lands just north and south of the project limits. The table below quantifies the impacts within the construction impact zone, and some of these resources are shown in the adjacent figure.

### Summary of Impacts

Category	Alternative A (No-Build)	Alternative B (Southern Bypass)	Alternative C (Widen Existing)
Section 4(f) Property Use (number of properties involved) (4(f) properties include historic properties, wildlife refuges, and public parks and recreation areas, which receive special protection under the Department of Transportation Act of 1966)	0	4	4
Total Section 4(f) Property Use (acres)	0	33	37
Woodlawn Plantation National Historic Landmark (part of Woodlawn Historic District) (acres) (acreage here is included in total for Woodlawn Historic District)	0	0.6	3.9
Woodlawn Historic District (acres) (includes Woodlawn Plantation National Historic Landmark Parcel)	0	9	13
Fort Belvoir Military Railroad (acres)	0	1	1
Fort Belvoir Forest and Wildlife Corridor (acres)	0	23	23
Accotink Bay Wildlife Refuge (acres)	0	0.1	0.1
Cemeteries Displaced (Woodlawn Baptist Church Cemetery)	0	0	1 ~ 100 graves
Total Area within Limits of Disturbance (LOD) (acres)	0	109	111
Total Length of Project (miles)	0	4	4
Total New Disturbed Area (excluding existing asphalt) (acres)	0	75	75
Homes Displaced	0	1	1
Apartment Buildings Displaced	0	4	4
Businesses Displaced	0	13	13
Schools Displaced	0	0	0
Religious Facilities Displaced	0	0	0
Other Community Facilities (rescue squads, fire stations, etc.) Displaced	0	0	0
Public Parks and Recreational Resources	0	0	0
Historic Properties within Area of Potential Effects (number of properties)	0	7	7
Estimated Length of Streams Impacted (linear feet)	0	~1,500	~1,500
Estimated Wetlands Displaced (acres)	0	3	3
Floodplains Crossed (acres)	0	5	5
Resource Protection Areas (acres)	0	13	13
Noise Impacts (number of noise sensitive sites impacted)	0	41	41
Hazardous Material Sites Impacted (number of mapped sites)	0	6	6
Forest (acres)	0	8	5
Prime and Unique Farmland Soils (acres) (as defined under Farmland Protection Policy Act, may not necessarily be under active farming)	0	38	35

## RELATED INFORMATION

Transit is an important component of overall transportation improvements in the Route 1 corridor and while provisions are being made to accommodate future transit, transit itself is not part of this project. For further information on Fairfax County's Countywide Transit Network Study, go to <http://www.fairfaxcounty.gov/fcdot/2050transitstudy>.

# ROUTE 1 IMPROVEMENTS AT FORT BELVOIR

## COMMENT SHEET

June 5, 2012

*Thank you for participating in tonight's meeting. Please take a few moments to complete the following questions. In order for your comments to be included in the meeting record, you may either leave your completed comment sheet at the designated location or it may be stamped and returned by mail to the addressee on the reverse side by July 6, 2012.*

The purpose of this meeting is for you to review the findings of the EA and to provide input in the selection of a Preferred Alternative for Route 1 improvements. The EA is available here on FHWA's website: <http://www.efl.fhwa.dot.gov/projects/environment.aspx>.

Please provide your input on the following questions:

What is your opinion of the alternatives that have been developed to address the project purpose and need?

---

---

---

What information would you offer to help decision-makers select the best alternative?

---

---

---

Are there other issues or concerns that you have regarding the Environmental Assessment?

---

---

---

We appreciate your feedback and want to address your questions and concerns. If you have written a question above and would like to receive a response or if you would like to be added to the mailing list to receive any future notifications, please provide us with your contact information:

Name: \_\_\_\_\_

Address: \_\_\_\_\_

E-mail Address: \_\_\_\_\_

Do you have additional questions or comments about the Environmental Assessment for Route 1 Improvements at Fort Belvoir?

Call FHWA: (703) 404-6282

E-mail FHWA: [jack.vandop@dot.gov](mailto:jack.vandop@dot.gov)

Write to FHWA: Mr. Jack Van Dop  
Environmental Specialist  
Federal Highway Administration  
Eastern Federal Lands Highway Division  
21400 Ridgetop Circle  
Sterling, VA 20166

*All comments submitted at this meeting and during the comment period will be incorporated in the meeting record, which is subject to public review.*

..... FOLD AND TAPE CLOSED .....

---

---

---

---

PLACE  
STAMP  
HERE

Mr. Jack Van Dop  
Environmental Specialist  
Federal Highway Administration  
Eastern Federal Lands Highway Division  
21400 Ridgetop Circle  
Sterling, VA 20166