

Broadleaf and Grass Weed Seedling Identification Keys

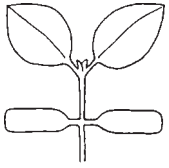
Beverly Durgan, Weed Scientist
Department of Agronomy and Plant Genetics

COLLEGE OF AGRICULTURAL, FOOD, AND ENVIRONMENTAL SCIENCES

BROADLEAF WEED SEEDLING IDENTIFICATION KEY TERMINOLOGY

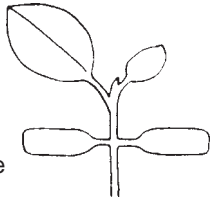
Opposite Leaves

Attached at same node on opposite sides of stem. Leaves at the same node are of similar size.



Alternate Leaves

One leaf per node. Leaves increase in size from top to bottom.



Cotyledon Shapes

(1) Linear

(2) Ovate

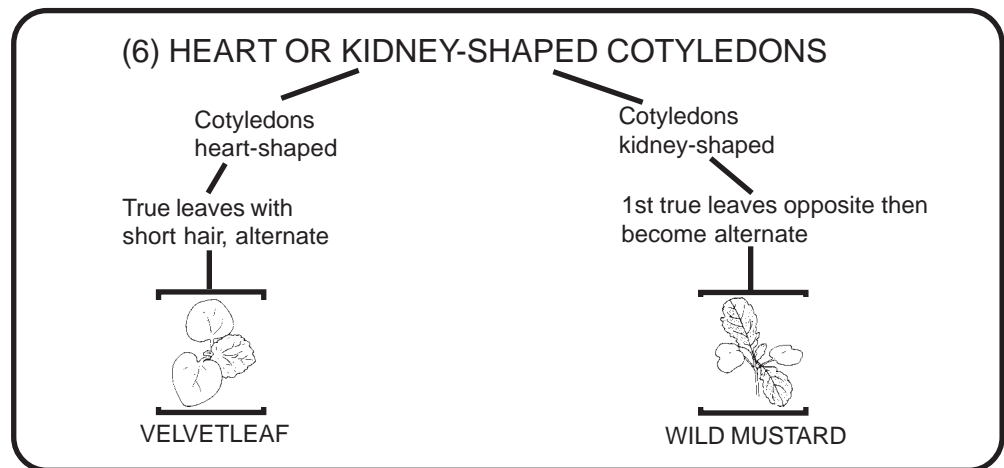
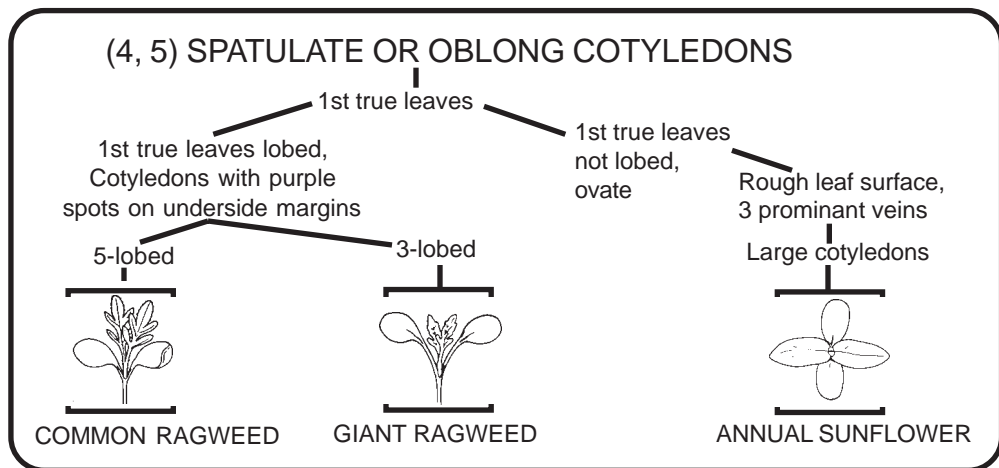
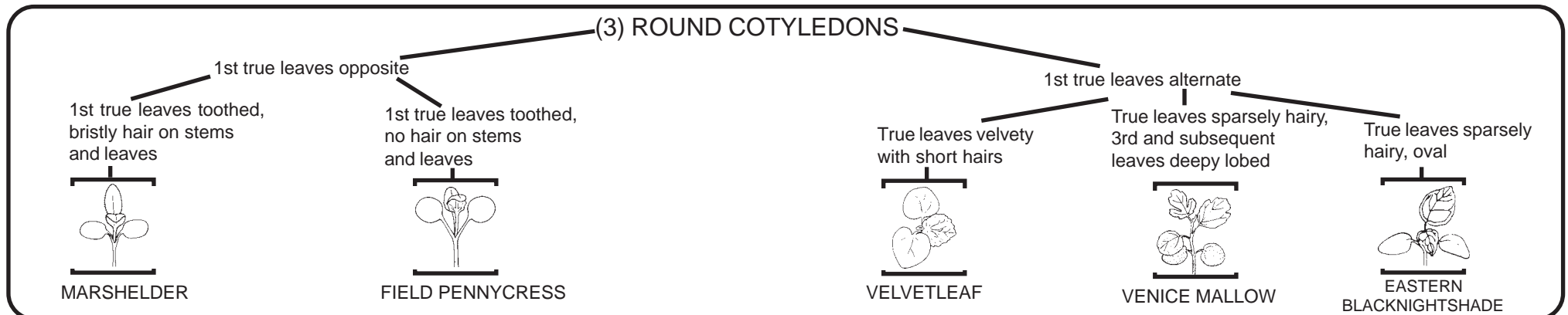
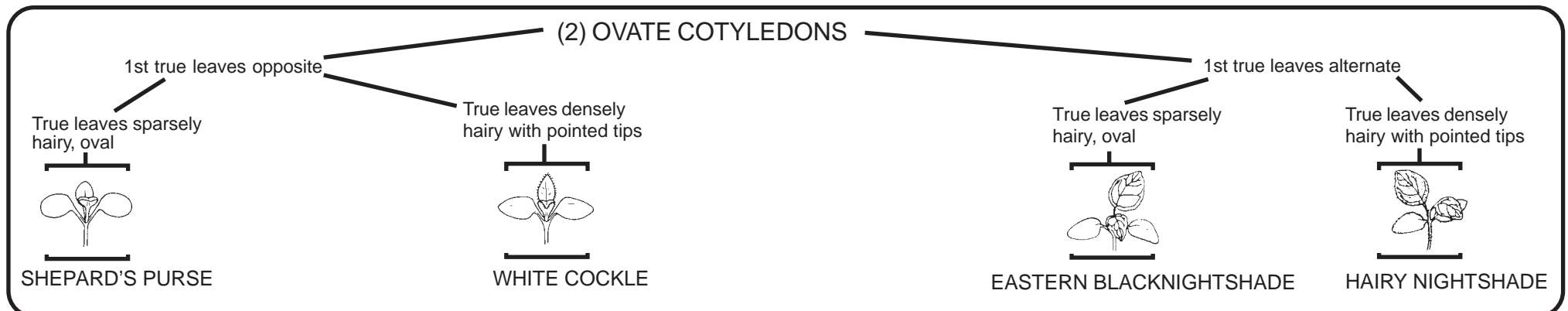
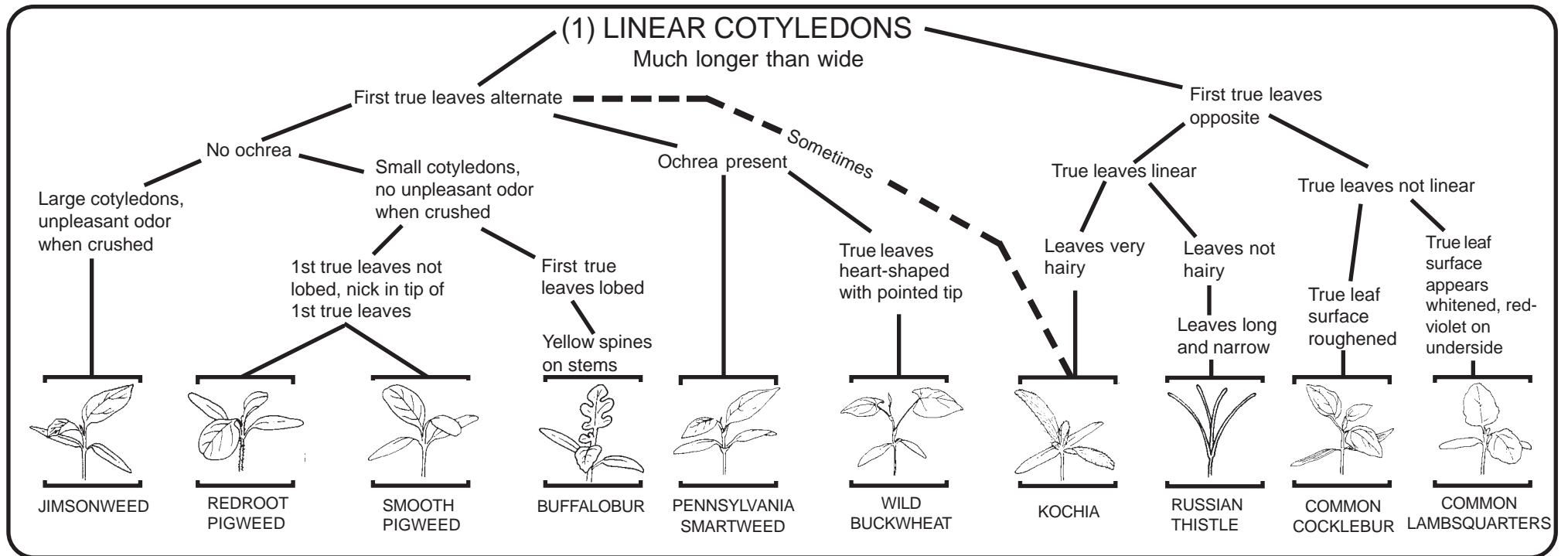
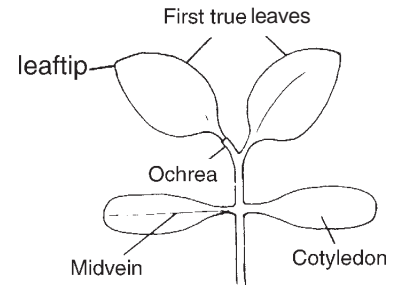
(3) Round

(4) Spatulate

(5) Oblong

(6) Heart/Kidney

Vegetative Broadleaf Plant Parts



GRASS WEED SEEDLING IDENTIFICATION KEY

TERMINOLOGY

