

MARINE PROTECTED AREAS IN ALASKA

Alaska Marine Protected Areas

- National Parks
- National Wildlife Refuges
- State MPAs
- National Estuarine Research Reserves
- NOAA Fisheries MPAs
- National System Member Sites

CONSERVATION FOCUS

Most MPAs have legally established goals, conservation objectives, and intended purpose(s). Common examples include MPAs created to conserve biodiversity in support of research and education; to protect benthic habitat in order to recover over-fished stocks; and to protect and interpret shipwrecks for maritime education. These descriptors of an MPA are reflected in the site's Conservation Focus, which represents the characteristics of the area that the MPA was established to conserve. The Conservation Focus, in turn, influences many fundamental aspects of the site, including its design, location, size, scale, management strategies and potential contribution to surrounding ecosystems. U.S. MPAs generally address one or more of these areas of Conservation Focus:

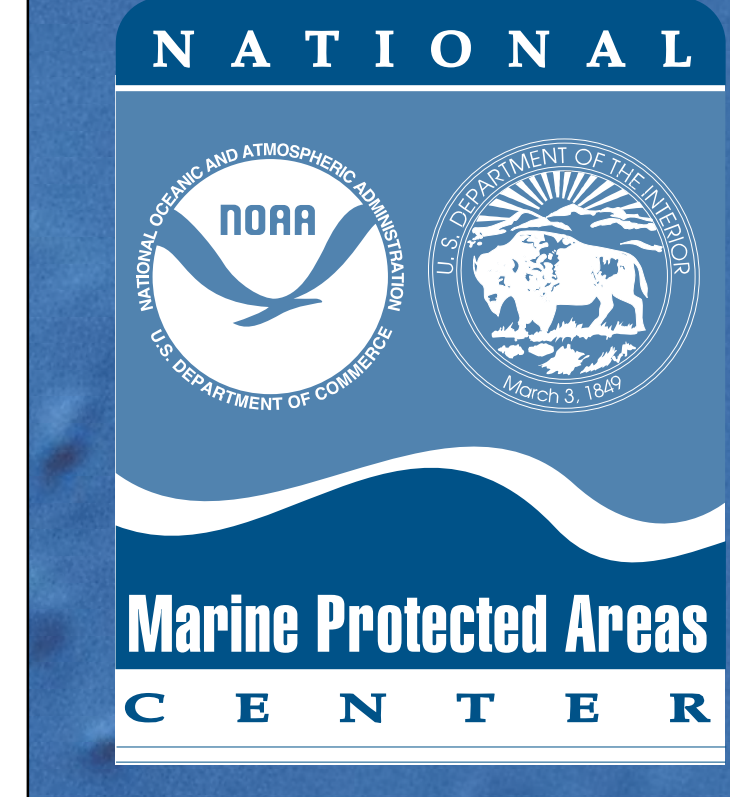
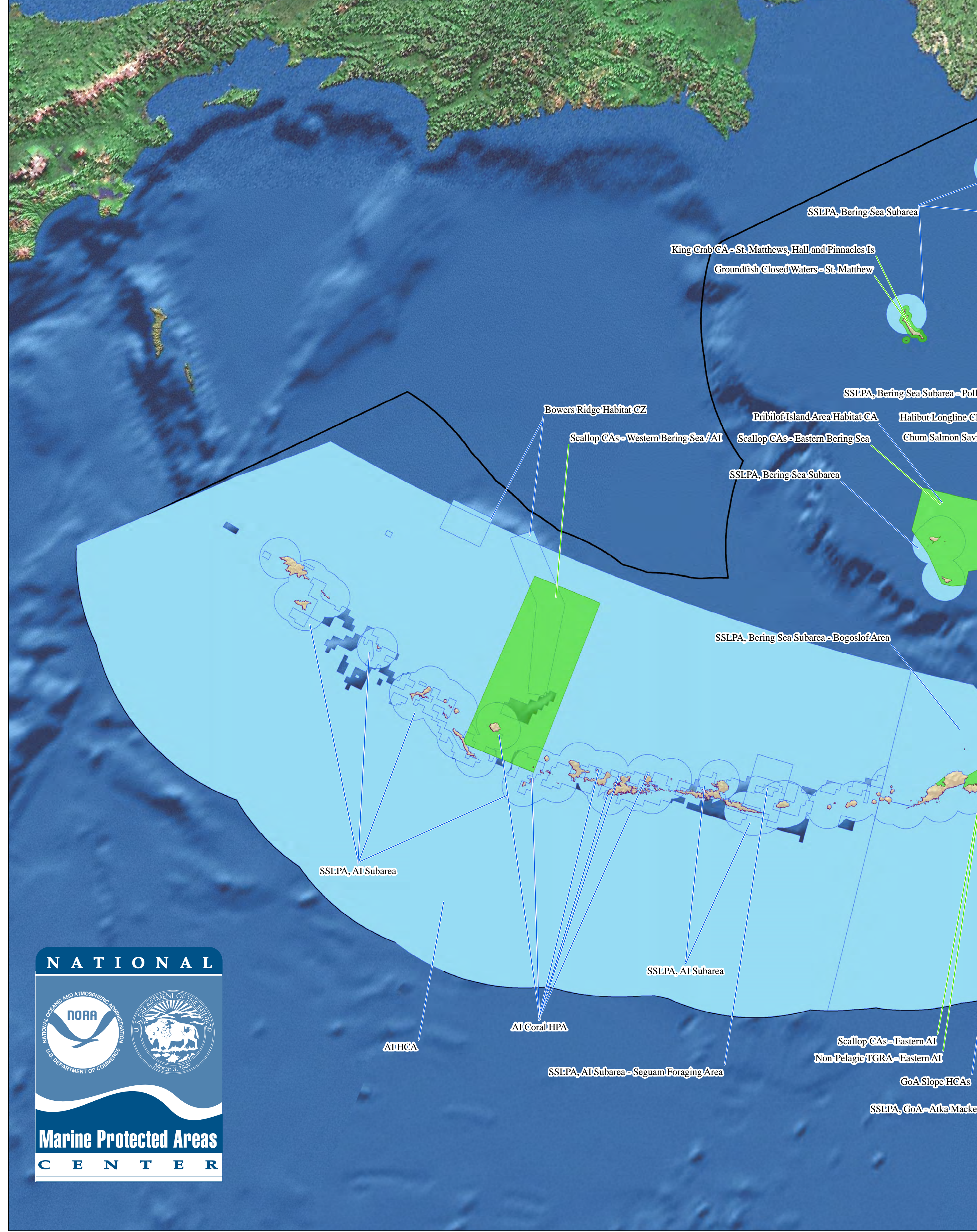
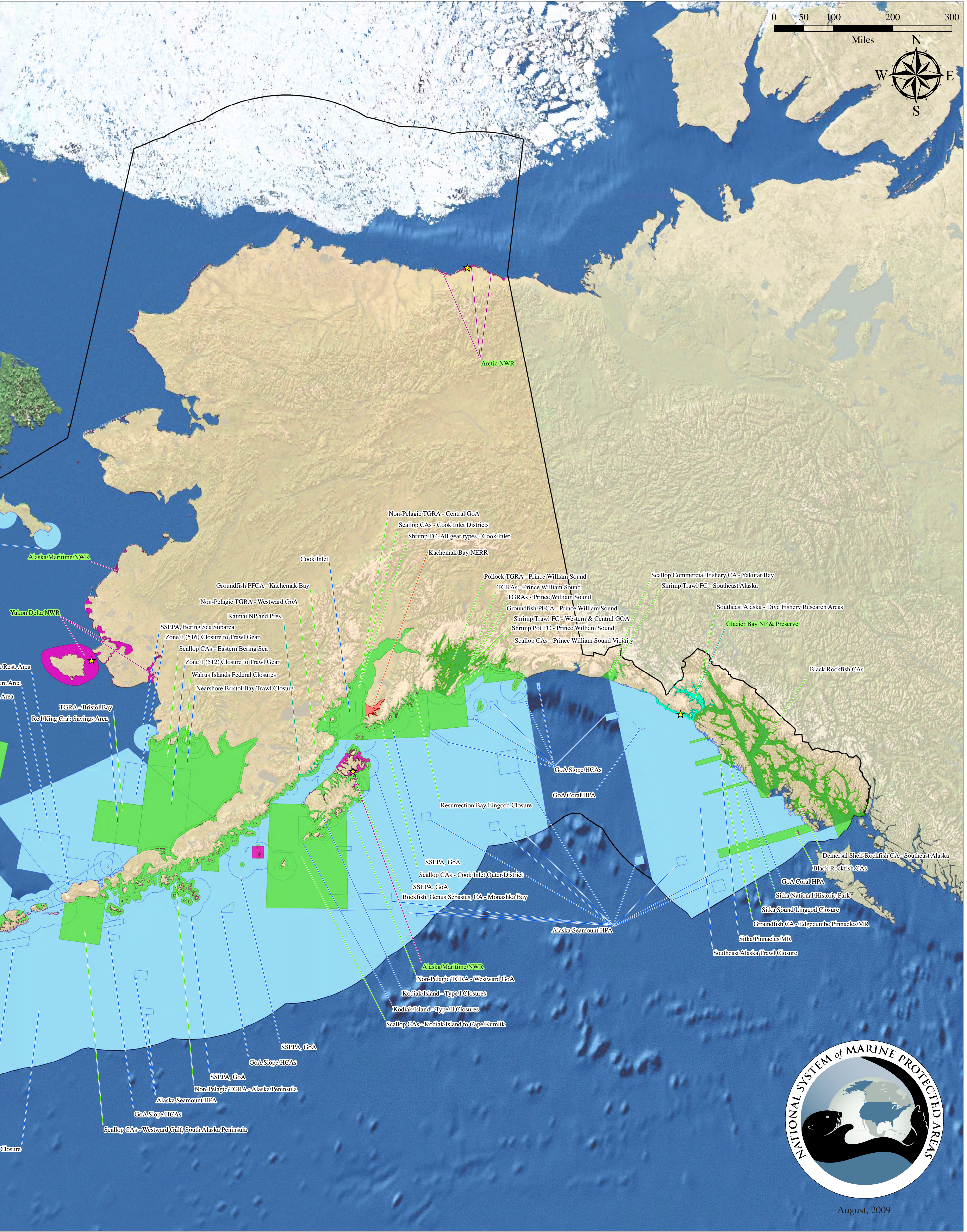
- Natural Heritage:** MPAs or zones established and managed wholly or in part to sustain, conserve, restore, and understand the protected area's natural biodiversity, populations, communities, habitats, and ecosystems; the ecological and physical processes upon which they depend; and, the ecological services, human uses and values they provide to this and future generations.
- Cultural Heritage:** MPAs or zones established and managed wholly or in part to protect and understand submerged cultural resources that reflect the nation's maritime history and traditional cultural connections to the sea.
- Sustainable Production:** MPAs or zones established and managed wholly or in part with the explicit purpose of supporting the continued extraction of renewable living resources (such as fish, shellfish, plants, birds, or mammals) that live within the MPA, or that are exploited elsewhere but depend upon the protected area's habitat for essential aspects of their ecology or life history.

This map provides information regarding the distribution of marine protected areas throughout Alaska. The boundaries for the areas shown were compiled into a spatial database by NOAA's Marine Protected Areas Center. Data were obtained from various federal agencies and participating state and local management offices and are current as of December 2007. Note that certain data gaps still exist. Please contact the MPA Center to provide information on sites that are missing from this catalog.

LEVEL OF PROTECTION

MPAs in the U.S. vary widely in the level and type of legal protections afforded to the site's natural and cultural resources and ecological processes. Any MPA, or management zone within a larger MPA, can be characterized by one of the following six levels of protection, which will directly influence its effects on the environment and human uses.

- Uniform Multiple-Use:** MPAs or zones with a consistent level of protection and allowable
- Zoned Multiple-Use:** MPAs that allow some extractive activities throughout the entire site, but that use marine zoning to allocate specific uses to compatible places or times in order to reduce user conflicts and adverse impacts.
- Zoned Multiple-Use With No-Take Areas:** Multiple-use MPAs that contain at least one legally established management zone in which all resource extraction is prohibited.
- No-Take:** MPAs or zones that allow human access and even some potentially harmful uses, but that totally prohibit the extraction or significant destruction of natural or cultural resources.
- No Impact:** MPAs or zones that allow human access, but that prohibit all activities that could harm the site's resources or disrupt the ecological or cultural services they provide.
- No Access:** MPAs or zones that restrict all human access to the area in order to prevent potential ecological disturbance, unless specifically permitted for designated special uses such



August, 2009

Abbreviations: Aleutian Islands (AI); Closure Area (CA); Conservation Zone (CZ); Fishery Closure (FC); Gulf of Alaska (GoA); Habitat Conservation Area (HCA); Habitat Protected Area (HPA); Marine Reserve (MR); National Estuarine Research Reserve (NERR); National Park (NP); National Wildlife Refuge (NWR); Pot Fishing Closed Area (PFCA); Steller Sea Lion Protection Area (SSLPA); Trawl Gear Restricted Area (TGRA)

Site Name	Level Of Government	National System Status	Fishing Restrictions	Protection Level	Primary Conservation Focus	Marine Area (km ²)
Alaska Maritime National Wildlife Refuge	Federal	Member	Commercial and Recreational Fishing Restricted	Uniform Multiple Use	Natural Heritage	3,536
Alaska Seamount Habitat Protected Area	Federal	Eligible	Commercial and Recreational Fishing Restricted	Uniform Multiple Use	Sustainable Production	18,279
Aleutian Islands Coral Habitat Protected Area	Federal	Eligible	Commercial and Recreational Fishing Restricted	Uniform Multiple Use	Sustainable Production	371
Aleutian Islands Habitat Conservation Area	Federal	Eligible	Commercial and Recreational Fishing Restricted	Uniform Multiple Use	Sustainable Production	958,498
Arctic National Wildlife Refuge	Federal	Member	Commercial and Recreational Fishing Restricted	Uniform Multiple Use	Natural Heritage	409
Black Rockfish Closure Areas	State	Eligible	Commercial Fishing Restricted	Uniform Multiple Use	Sustainable Production	36,362
Bowers Ridge Habitat Conservation Zone	Federal	Eligible	Commercial and Recreational Fishing Restricted	Uniform Multiple Use	Sustainable Production	18,131
Chum Salmon Saving Area	Federal	Eligible	Commercial Fishing Restricted	Uniform Multiple Use	Sustainable Production	17,517
Cook Inlet	Federal	Eligible	Commercial and Recreational Fishing Restricted	Uniform Multiple Use	Sustainable Production	8,061
Demersal Shell Rockfish Closure Area - Southeast Alaska	State	Eligible	Commercial Fishing Restricted	Uniform Multiple Use	Sustainable Production	2,263
Glacier Bay National Park & Preserve	Federal	Member	Commercial and Recreational Fishing Restricted	Uniform Multiple Use	Natural Heritage	2,435
Groundfish Closed Area - Edgcombe Pinnacles Marine Reserve	State	Eligible	Commercial Fishing Restricted	Uniform Multiple Use	Sustainable Production	9
Groundfish Closed Waters - St. Matthew, Hall, & Pinnacle Islands	State	Eligible	Commercial Fishing Restricted	Uniform Multiple Use	Sustainable Production	1,136
Groundfish Pot Fishing Closed Area - Kachemak and Kamishak Bay	State	Eligible	Commercial Fishing Restricted	Uniform Multiple Use	Sustainable Production	1,631
Groundfish Pot Fishing Closed Area - Prince William Sound	State	Eligible	Commercial Fishing Restricted	Uniform Multiple Use	Sustainable Production	2,142
Gulf of Alaska Coral Habitat Protected Area	Federal	Eligible	Commercial and Recreational Fishing Restricted	Uniform Multiple Use	Sustainable Production	47
Gulf of Alaska Slope Habitat Conservation Areas	Federal	Eligible	Commercial and Recreational Fishing Restricted	Uniform Multiple Use	Sustainable Production	7,244
Habitat Longline Closure Area	Federal	Eligible	Commercial Fishing Restricted	Uniform Multiple Use	Sustainable Production	122,631
Kachemak Bay National Estuarine Research Reserve	Partnership	Eligible	No Site Restrictions	Uniform Multiple Use	Natural Heritage	938
Katmai National Park and Preserve	Federal	Eligible	Commercial and Recreational Fishing Restricted	Uniform Multiple Use	Natural Heritage	48
King Crab Closed Areas - St. Matthews, Hall and Pinnacles Islands	State	Eligible	Commercial Fishing Restricted	Uniform Multiple Use	Sustainable Production	1,136
Kodiak Island, Trawls Other Than Pelagic Trawls - Type I Closures	Federal	Eligible	Commercial Fishing Restricted	Uniform Multiple Use	Sustainable Production	6,687
Kodiak Island, Trawls Other Than Pelagic Trawls - Type II Closures	Federal	Eligible	Commercial Fishing Restricted	Uniform Multiple Use	Sustainable Production	3,267
Nearshore Bristol Bay Trawl Closure	Federal	Eligible	Commercial and Recreational Fishing Restricted	Zoned Multiple Use	Sustainable Production	65,139
Non-Pelagic Trawl Gear Restriction Area - Alaska Peninsula	State	Eligible	Commercial Fishing Restricted	Uniform Multiple Use	Sustainable Production	17,530
Non-Pelagic Trawl Gear Restriction Area - Central Gulf of Alaska	State	Eligible	Commercial Fishing Restricted	Uniform Multiple Use	Sustainable Production	28,216
Non-Pelagic Trawl Gear Restriction Area - Eastern Aleutian Islands	State	Eligible	Commercial Fishing Restricted	Uniform Multiple Use	Sustainable Production	2,493
Non-Pelagic Trawl Gear Restriction Area - Western Gulf of Alaska	State	Eligible	Commercial Fishing Restricted	Uniform Multiple Use	Sustainable Production	11,736
Pollock Trawl Gear Restriction Area - Prince William Sound	State	Eligible	Commercial Fishing Restricted	Uniform Multiple Use	Sustainable Production	5,173
Pribilof Island Area Habitat Conservation Area	Federal	Eligible	Commercial Fishing Restricted	Uniform Multiple Use	Sustainable Production	19,377
Red King Crab Savings Area	Federal	Eligible	Commercial and Recreational Fishing Restricted	Zoned Multiple Use	Sustainable Production	13,715
Resurrection Bay Lingcod Closure	State	Eligible	Commercial Fishing Restricted	Uniform Multiple Use	Sustainable Production	385
Rockfish, Genus Sebastes, Closed Area - Monash Bay	State	Eligible	Commercial Fishing Restricted	Uniform Multiple Use	Sustainable Production	12

Site Name	Level Of Government	National System Status	Fishing Restrictions	Protection Level	Primary Conservation Focus	Marine Area (km ²)
Scallop Closed Areas - Cook Inlet Districts	State	Eligible	Commercial Fishing Restricted	Uniform Multiple Use	Sustainable Production	12,143
Scallop Closed Areas - Cook Inlet Outer District	State	Eligible	Commercial Fishing Restricted	Uniform Multiple Use	Sustainable Production	693
Scallop Closed Areas - Eastern Aleutian Islands	State	Eligible	Commercial Fishing Restricted	Uniform Multiple Use	Sustainable Production	2,493
Scallop Closed Areas - Eastern Bering Sea	State	Eligible	Commercial Fishing Restricted	Uniform Multiple Use	Sustainable Production	99,132
Scallop Closed Areas - Kodiak Island to Cape Kumlik	State	Eligible	Commercial Fishing Restricted	Uniform Multiple Use	Sustainable Production	64,562
Scallop Closed Areas - Prince William Sound Vicinity	State	Eligible	Commercial Fishing Restricted	Uniform Multiple Use	Sustainable Production	24,000
Scallop Closed Areas - Western Bering Sea / Aleutian Islands	State	Eligible	Commercial Fishing Restricted	Uniform Multiple Use	Sustainable Production	44,600
Scallop Closed Areas - Westward Gulf, South Alaska Peninsula	State	Eligible	Commercial Fishing Restricted	Uniform Multiple Use	Sustainable Production	31,066
Scallop Commercial Fishery Closed Areas - Yakutat Bay	State	Eligible	Commercial Fishing Restricted	Uniform Multiple Use	Sustainable Production	1,193
Shrimp Fishery Closure, All gear types - Cook Inlet, Kenai Peninsula	State	Eligible	Commercial Fishing Restricted	Uniform Multiple Use	Sustainable Production	34,876
Shrimp Pot Fishery Closure - Prince William Sound	State	Eligible	Commercial Fishing Restricted	Uniform Multiple Use	Sustainable Production	13,267
Shrimp Trawl Fishery Closure - Southeast Alaska	State	Eligible	Commercial Fishing Restricted	Uniform Multiple Use	Sustainable Production	2,245
Shrimp Trawl Fishery Closure - Western and Central Gulf of Alaska	State	Eligible	Commercial Fishing Restricted	Uniform Multiple Use	Sustainable Production	2,472
Sitka National Historical Park	Federal	Eligible	Commercial and Recreational Fishing Restricted	Zoned Multiple Use	Cultural Heritage	>1
Sitka Pinnacles Marine Reserve	Federal	Eligible	Commercial and Recreational Fishing Restricted	Uniform Multiple Use	Sustainable Production	9
Sitka Sound Lingcod Closure	State	Eligible	Commercial Fishing Restricted	Uniform Multiple Use	Sustainable Production	712
Southeast Alaska Dive Fishery Research Areas	State	Eligible	Commercial Fishing Restricted	Uniform Multiple Use	Sustainable Production	3,458
Southeast Alaska Trawl Closure	Federal	Eligible	Commercial Fishing Restricted	Uniform Multiple Use	Sustainable Production	180,659
Steller Sea Lion Protection Areas, Aleutian Islands Subarea - Groundfish, Pollock, Pacific Cod, and Atka Mackerel Closures	Federal	Eligible	Commercial Fishing Restricted	Zoned Multiple Use	Natural Heritage	96,561
Steller Sea Lion Protection Areas, Bering Sea Subarea - Squam Foraging Area	Federal	Eligible	Commercial Fishing Restricted	Uniform Multiple Use	Natural Heritage	7,303
Steller Sea Lion Protection Areas, Bering Sea Subarea - Groundfish, Pollock, Pacific Cod, and Atka Mackerel Closures	Federal	Eligible	Commercial Fishing Restricted	Zoned Multiple Use	Natural Heritage	26,936
Steller Sea Lion Protection Areas, Gulf of Alaska - Atka Mackerel Closure	Federal	Eligible	Commercial Fishing Restricted	Uniform Multiple Use	Natural Heritage	41,167
Steller Sea Lion Protection Areas, Gulf of Alaska - Atka Mackerel Closure	Federal	Eligible	Commercial Fishing Restricted	Uniform Multiple Use	Natural Heritage	5,370
Steller Sea Lion Protection Areas, Gulf of Alaska - Atka Mackerel Closure	Federal	Eligible	Commercial Fishing Restricted	Uniform Multiple Use	Natural Heritage	869,349
Steller Sea Lion Protection Areas, Gulf of Alaska - Pacific Cod Closures	Federal	Eligible	Commercial and Recreational Fishing Restricted	Zoned Multiple Use	Natural Heritage	83,497
Trawl Gear Restriction Area - Bristol Bay	State	Eligible	Commercial Fishing Restricted	Uniform Multiple Use	Sustainable Production	20,799
Trawl Gear Restriction Areas - Prince William Sound	State	Eligible	Commercial Fishing Restricted	Uniform Multiple Use	Sustainable Production	2,546
Walrus Islands Federal Closures	State	Eligible	Commercial Fishing Restricted	Uniform Multiple Use	Sustainable Production	3,644
Walrus Protection Areas	Federal	Eligible	Commercial Fishing Restricted	Uniform Multiple Use	Natural Heritage	96,561
Yukon Delta National Wildlife Refuge	Federal	Member	Restrictions Unknown	Uniform Multiple Use	Natural Heritage	11,947
Zone I (512) Closure to Trawl Gear	Federal	Eligible	Commercial Fishing Restricted	Uniform Multiple Use	Sustainable Production	27,172
Zone I (516) Closure to Trawl Gear	Federal	Eligible	Commercial Fishing Restricted	Uniform Multiple Use	Sustainable Production	17,175