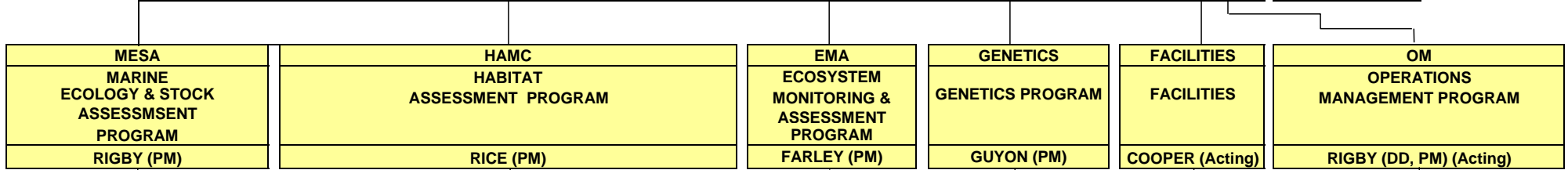


F/AKC4*	AUKE BAY LABORATORIES INTERM ORGANIZATIONAL CHART 7/5/2012	■FS7400 STATEWIDE RES. COORDINATOR MUNDY (S) ●Heard ●Thrower
MUNDY - DIRECTOR (S)		



MARINE STOCK ASSESSMENTS	
Rigby (S)	Heifetz (S)
●Clausen ●Csepp ●Hanselman ●Heifetz ●Karinen ●Lunsford ●Rutecki ◆Stone Contractor ●Busch (N)	●Echave-(T-FY12) ●Hulson ◆Lorenz ●Malecha ●Rodgveller ●Shotwell ●Tribuzio

HABITAT ASSESSMENTS
Rice (S)
●Carls-S ●Fergusson ◆Harris ●Heintz ◆Johnson,S ●Lindeberg ●Miller ●Nelson ●Sturdevant ◆Thedinga Contractor ●Ballard (N) ●Cote (N) ●Heffren (N) ◆Neff (N) ●Olson (N) ●Sloss(N)

MARINE CHEMISTRY
Carls (S)
●Holland ●Maselko ●Masuda ●Schauffer Contractor ●Allen (N) ●Cormack(N) ●Cuadra (N) ●Duncan (N) ●Zaleski (N)

NUTRITIONAL ECOLOGY
Heintz (S) (Acting)
●Bradshaw ●Cox-(T-FY12) ●Moran ●Vollenweider Contractor ●Christianson (N) ●Eller (N) ●Garrison (N) ●Robertson (N) ●Sewall(N) ●Siddon(N) ●Sreenivasan(FNG)

BASIS/SECM FISHERIES OCEAN
Farley(S)
●Andrews-(T-FY13) ◆Eiler ●Eisner ●Gann-(TP2/11) ●Hochstoeger ●Martinson ●Moss ●Murphy ●Orsi ●Rhea-Fournier-(T-FY14) Contractor ●Grange (N-V) ●Strasburger (N) ●van Tulder (N)

GENETICS
Guyon (S)
●Celewycz ●Gray ●Guthrie ●Joyce ●Kondzela ●McCraney(T-FY12) ●Nguyen ●Wildes Contractor ●Marvin (N) ◆●Vulstek (N)

FACILITIES
Cooper (S)(Acting)
★Abbas ●Anderson ●Cooper ●Garcia ●Hoover ✕Stanley ●Weinlaeder Contractor ●Cunningham(N) ◆Cherian (N) ●Heckler (N) ●Mattson (N) ◆Senkovich (N)

IT
Rigby (DD, PM) (Acting)
●Johnson, P ●Martin ●Mathers Contractor

ADMIN
Rigby (DD, PM) (Acting)
●Johnson, F ●Johnston,K (St) ●Johnston,S ●Kimball ●Leopold ●Mahle Contractor ●Schauffer C (N) ●Steeves (N)

ABL OrganizationTotals	
67- FTE	
6-Term	
11- Vice	
31 - Contractors	
1 - Students	
1 - Volunteer	
1 - Foreign National	
Total	118

ABBREVIATIONS
PM = Program Manager (RO) S = Supervisor (RO) T = Term Appointment Tp = Temporary Appointment St = Student Appointment N = Non-NOAA V = Volunteer FNG = Foreign Nat'l Guest RO = Rating Official

FACILITIES
●TSMRI ◆Auke Bay Marine Station ★Little Port Walter Marine Station ☼ Auke Creek Research Station ✕ Pribilof/St Paul /St. George Islands Juneau Subport
CODES
F/AKC4 = ABL Routing Code ★ Organization Code ■ Operating Unit Number

VICE RECRUITMENT
●Vice Carls ●Vice Farley ★Vice Feldmann ●Vice Ignell ●Vice Larsen ●Vice Lunasin ●Vice Moles ●Vice Murphy JT ◆Vice Taylor ●Vice Wertheimer ◆ Vice Wing