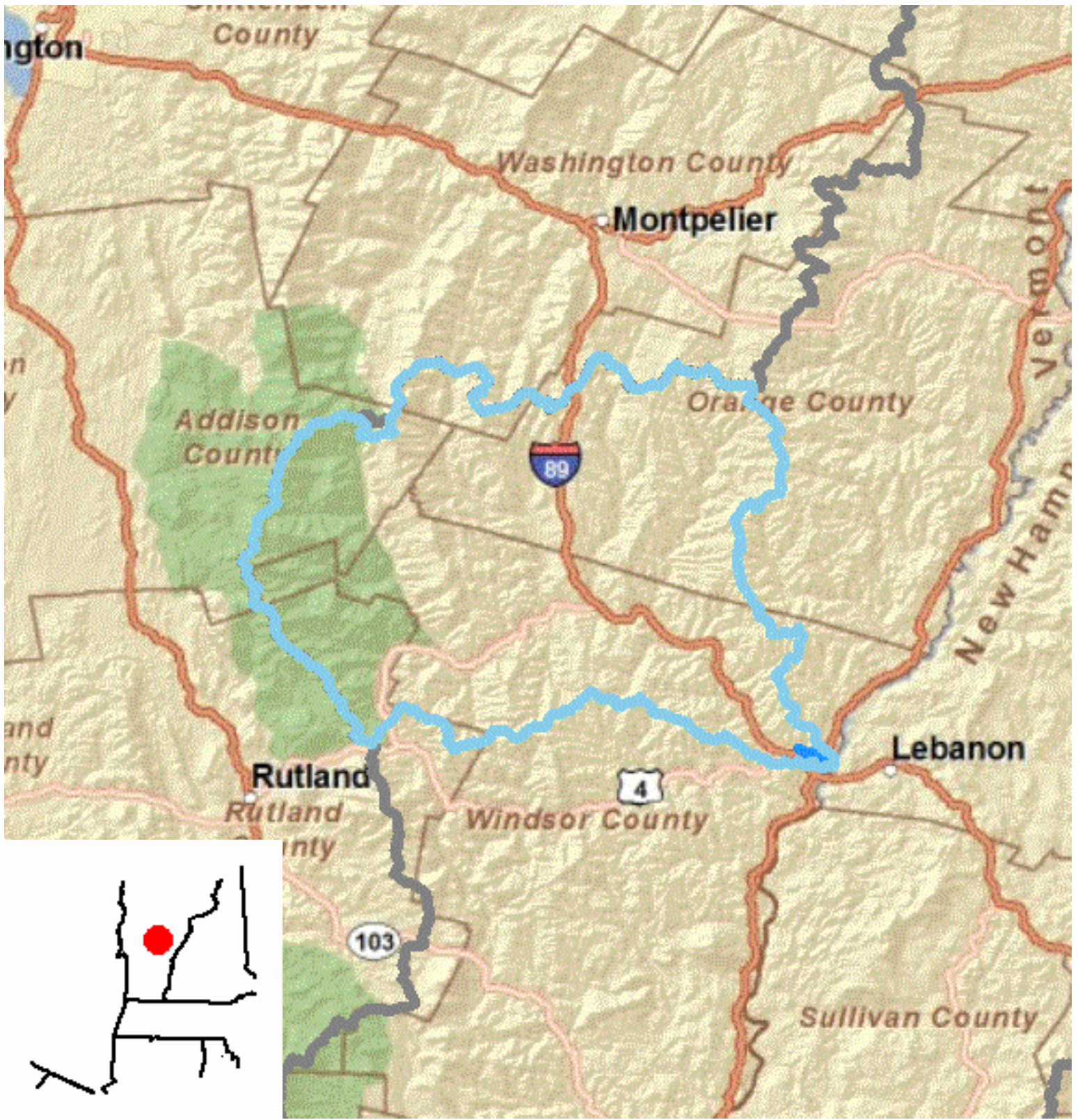


Stream Information Report

Connecticut River Watershed Atlas



11/8/2011

White River



Stream and Watershed Characteristics for the Selected Stream Segment of the NHDPlus

Stream Characteristics

Stream Name: **White River**
Reach Code: **01080105000557**
NHDPlus flowline ComID: **6086593**

Strahler Stream Order: **5**

Slope of stream segment: **0.00153**

Mean annual streamflow is **1032.62512** cubic feet per second. Estimated using the Unit Runoff method in the NHDPlus.

Mean annual stream velocity is **1.80884** feet per second. Estimate provided by the NHDPlus using the Jobson Method (1996) using mean annual flow from the Unit Runoff method.

Downstream main path distance (downstream of this stream segment) to the Atlantic Ocean at the mouth of the Connecticut River is **349.626** miles: Source NHDPlus.

Watershed Characteristics

Drainage area in square miles **709.842**
Drainage area in square kilometers **1838.483**

The watershed has a mean annual temperature of **42.01** degrees Fahrenheit with a mean annual precipitation of **43.17** inches per year.

2000 U.S. Census population is **25394**. Estimate from the 2000 U.S. Census block data.

Approximate total road length is **1611.89675** miles with a road density of **2.27461** miles of road per square mile. Source U.S. Census TIGER 2006 Second Edition.

There are no toxic release sites as identified in the Toxic Release Inventory (EPA 2005) database.

There are no point sources as identified in the EPA National Pollutant Discharge Elimination System (NPDES)

From the 2001 National Land Cover Dataset

Percent Open Water **0.231**

Percent Developed **4.664**

.....Developed/Open Space **3.095**

.....Developed/Low Intensity **1.156**

.....Developed/Medium Intensity **0.361**

.....Developed/High Intensity **0.052**

Percent Barren **0.06**

Percent Forested **83.134**

.....Deciduous **44.714**

.....Evergreen **16.968**

.....Mixed **21.452**

Percent Herbaceous Grasslands **0.434**

Percent Agriculture **9.342**

.....Pasture/Hay **5.928**

.....Cultivated Crops **3.414**

Percent Wetlands **0.713**

.....Woody Wetlands **0.655**

.....Emergent Herbaceous Wetlands **0.058**

Percent Impervious Surface **0.813**

Percent Forest Canopy **73.357**

From the 1992 National Land Cover Dataset

Percent Open Water **0.40281**

Percent Developed **0.89717**

.....Low Intensity Residential **0.38233**

.....High Intensity Residential **0.02638**

.....Commercial/Industrial/Transportation **0.48846**

Percent Barren **0.55482**

.....Bare Rock/Sand/Clay **0.10691**

.....Quarries/Strip Mines/Gravel Pits **0.03289**

.....Transitional **0.41502**

Percent Forest **83.45862**

.....Deciduous Forest **46.35809**

.....Evergreen Forest **14.02039**

.....Mixed Forest **23.08014**

Percent Shrubland **0.14813**

Percent Non-Natural Woody (orchards, vineyards/other) **0.00425**

Percent Agriculture/Cultivated **12.86308**

.....Pasture Hay **2.86432**

.....Row Crops **9.99876**

.....Small Grains **0**

.....Urban/Recreational Grasslands **0.01957**

Percent Wetlands **1.65149**

.....Woody Wetlands **0.93882**

.....Emergent Herbaceous Wetlands **0.71267**

Notes

Different methods were used to derive the 1992 National Land Cover Dataset (NLCD) and the 2001 NLCD. A direct comparison between these data is not recommended. For more information visit <http://www.epa.gov/mrlc/change.html>

Links

For more information about the 2001 NLCD visit http://www.mrlc.gov/mrlc2k_nlcd.asp

For more information about the 1992 NLCD visit <http://landcover.usgs.gov/natl/landcover.php>

National Hydrography Dataset Plus (NHDPlus) <http://www.horizon-systems.com/nhdplus/>

U.S. Census 2000 <http://www.census.gov/main/www/cen2000.html>

U.S. EPA Toxic Release Inventory Program <http://epa.gov/tri/>

U.S. EPA National Pollutant Discharge Elimination System <http://cfpub.epa.gov/npdes/>

References

Jobson, H.E., *Prediction of Traveltime and Longitudinal Dispersion in Rivers and Streams*,U.S. Geological Survey Water Resources Investigations Report96-4013 (1996), U.S. Geological Survey.

Contact Information

Question or comments regarding this report or web site, please contact:

Craig Johnston - Physical Scientist
U.S. Geological Survey - NH/VT Water Resources
cmjohnst@usgs.gov