

Incorporating the Exclusion Area



Presented to GF Advisory Council June 7, 2012

San Francisco / Pacifica Exclusion Area

Federal Register v.57, no. 182, September 18, 1992:

“The boundary excludes a small area of approximately 71 square nautical miles off the north coast of San Mateo County and the City and County of San Francisco. The excluded area encompasses the anticipated discharge plume of the combined sewer overflow component of the City and County of San Francisco's sewage treatment program, the shipping channel providing access to and from San Francisco Bay, and the Golden Gate dredged material disposal site associated with this channel. NOAA has determined that the nature and level of these activities are not appropriate for inclusion within a national marine sanctuary. By excluding this small area from the Sanctuary, NOAA will be able to focus Sanctuary management on the long-term protection of other areas that contain nationally significant resources and qualities and are less heavily impacted by human activity. By excluding the anticipated discharge plume of the combined sewer overflow from the sanctuary, a buffer zone has been created protecting sanctuary resources and qualities from the discharge.”

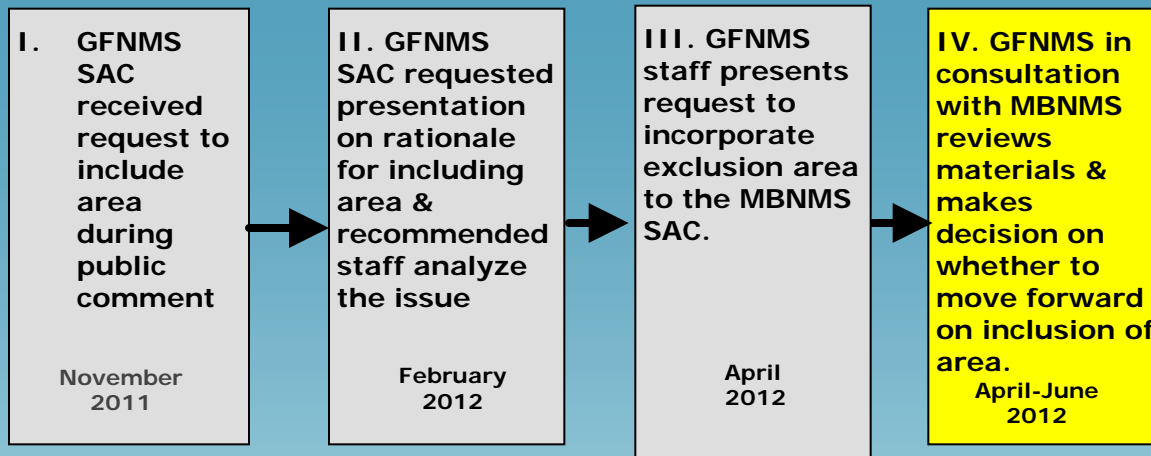
San Francisco / Pacifica Exclusion Area

As part of the JMPR Update:

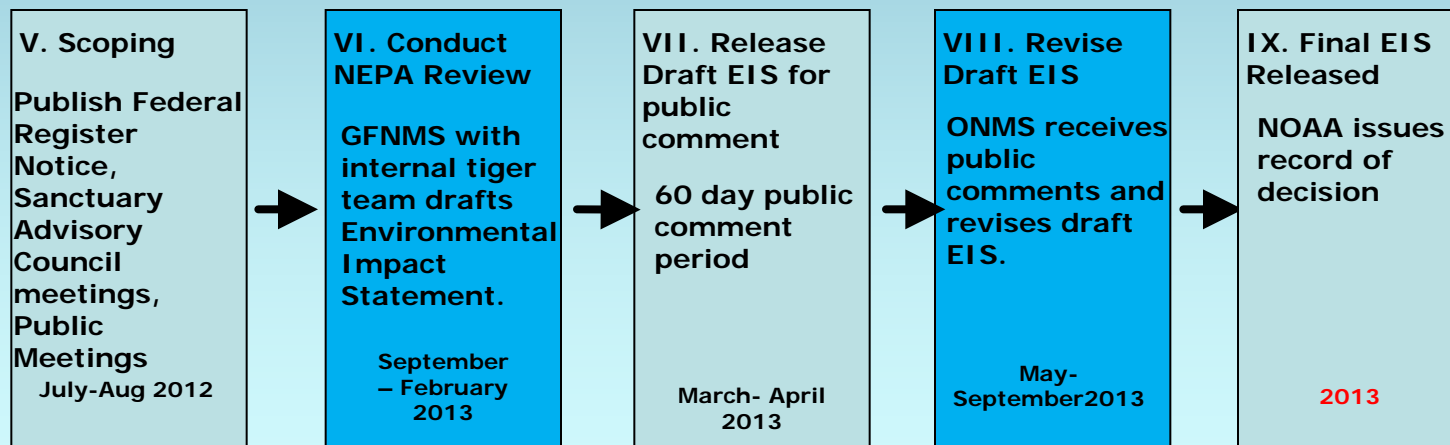
GFNMS staff may facilitate a public process in the next 5 years to consider whether the San Francisco Exemption Area (a.k.a. “the donut hole”) should be included into the MBNMS.

Such an action would require changing the MBNMS regulations and designation document and require coordination with MBNMS staff, and approval from the MBNMS Superintendent.

Administrative Process for Incorporating Exclusion Area

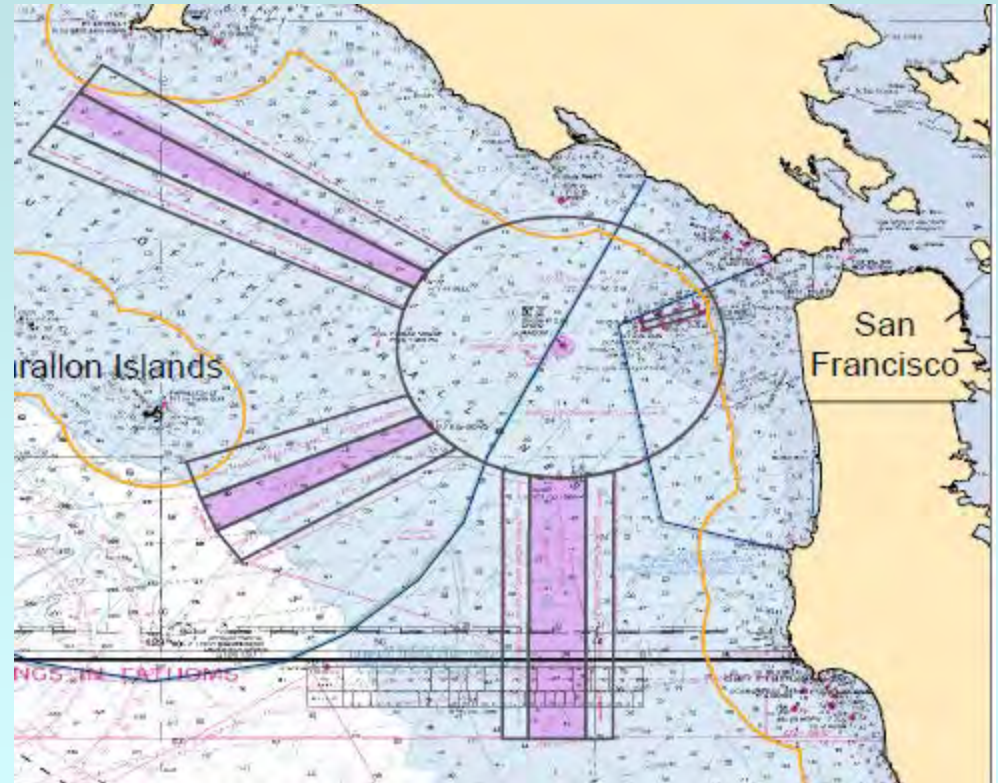


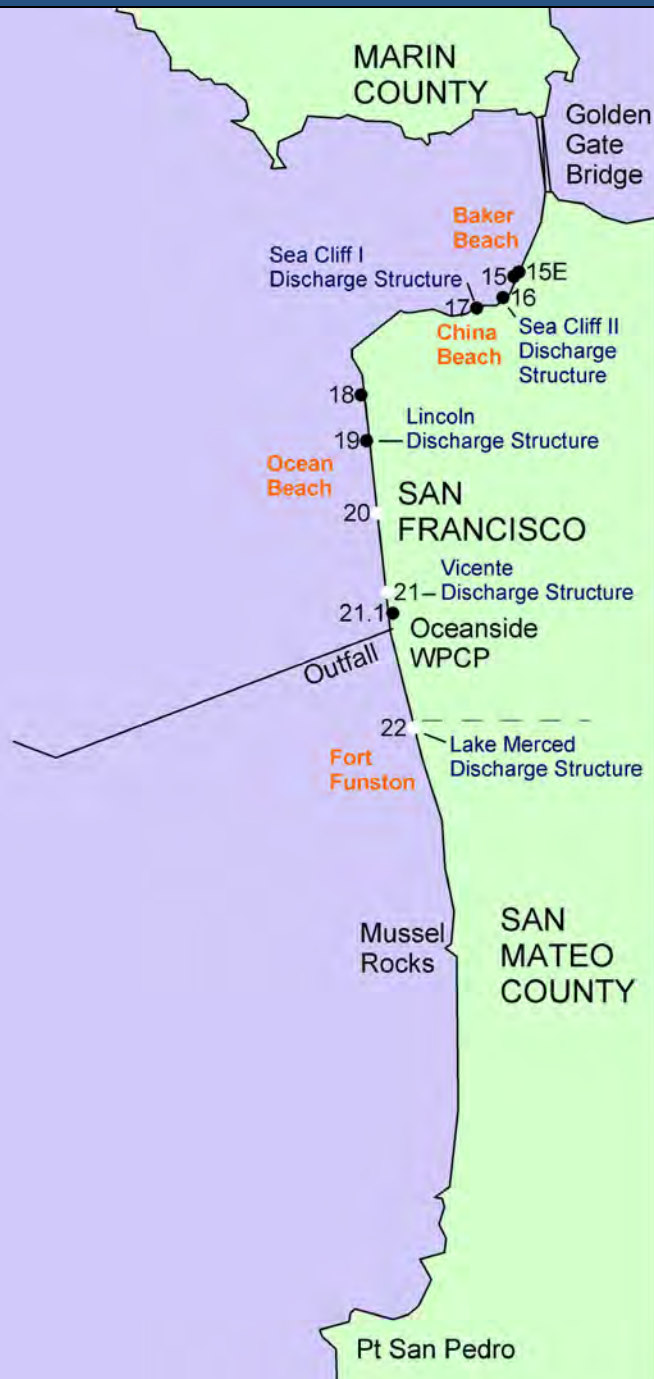
If decision is to proceed with analysis to incorporate the exclusion zone then...



Vessel Traffic

- TSS exist in many sanctuaries, including GFNMS and MBNMS
- MBNMS regs have accommodations for vessel discharge



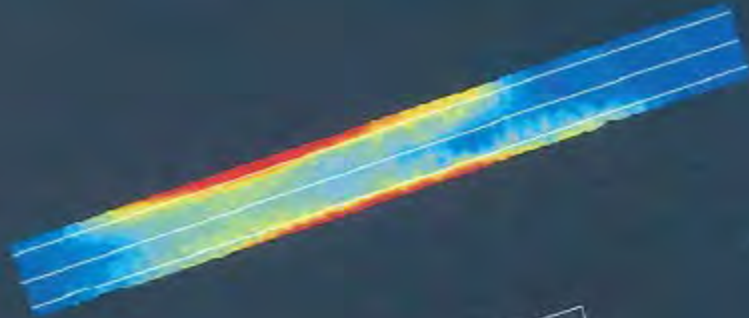
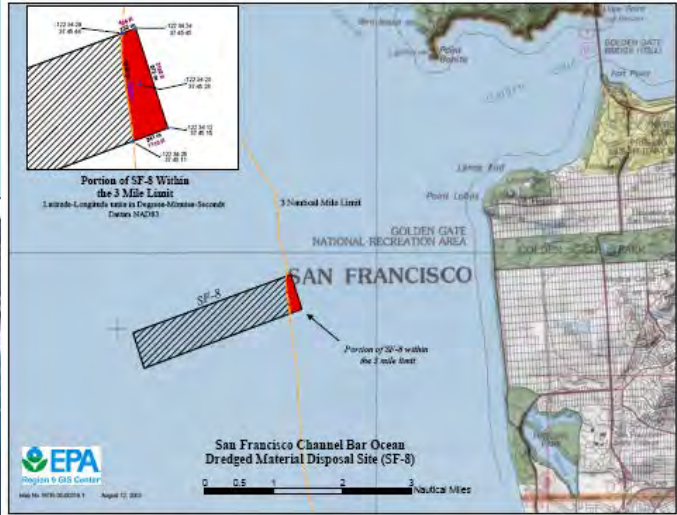


Combined Sewer Outflow

- 17 years in a row of zero permit violations
- California Environmental Association Plant of the Year, 2002
- National Plant of the Year, 2003
- Bioaccumulation in fish and crabs- none found
- Toxicity monitoring in sediment and effluent- none found
- Current upgrades- odor control, energy reduction, safety
- All storm water and urban runoff received treatment to at least wet-weather primary effluent standards
- Most storm water receives secondary treatment
- CSDs have 94% treated storm water and 6% treated sanitary flow
- CSDs are short duration and low volume

Dredge Materials

Predominately fine grained sand
(~0.18 mm)



SF-8
1975 – Present

SF-17
2005 – Present
74-99% of Dredged Material



Erosion/Sediment Transport

- Beach Nourishment Projects
- Coastal Armoring
- Sediment Stockpiling



Related MBNMS Protections

- Protects against gas, oil and mineral development and production
- Protects against discharge
- Protects against wildlife disturbance
- Protects the seafloor



UC Santa Barbara Bren School





Questions?

Thank You!