

The Donut Hole

Sunset

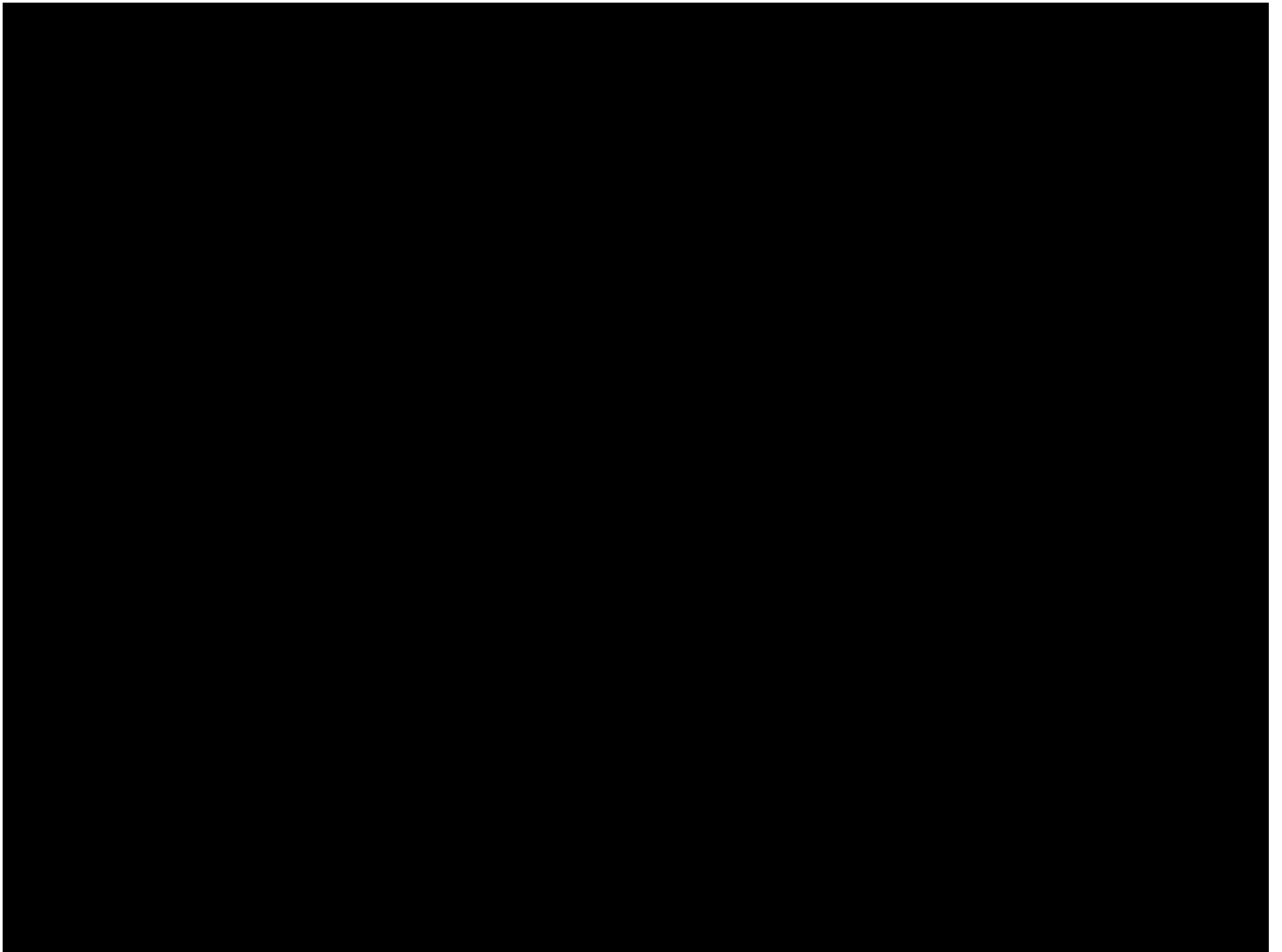
The San Francisco-Pacific Exclusion Zone
**Changes to the
exclusionary factors since
designation**

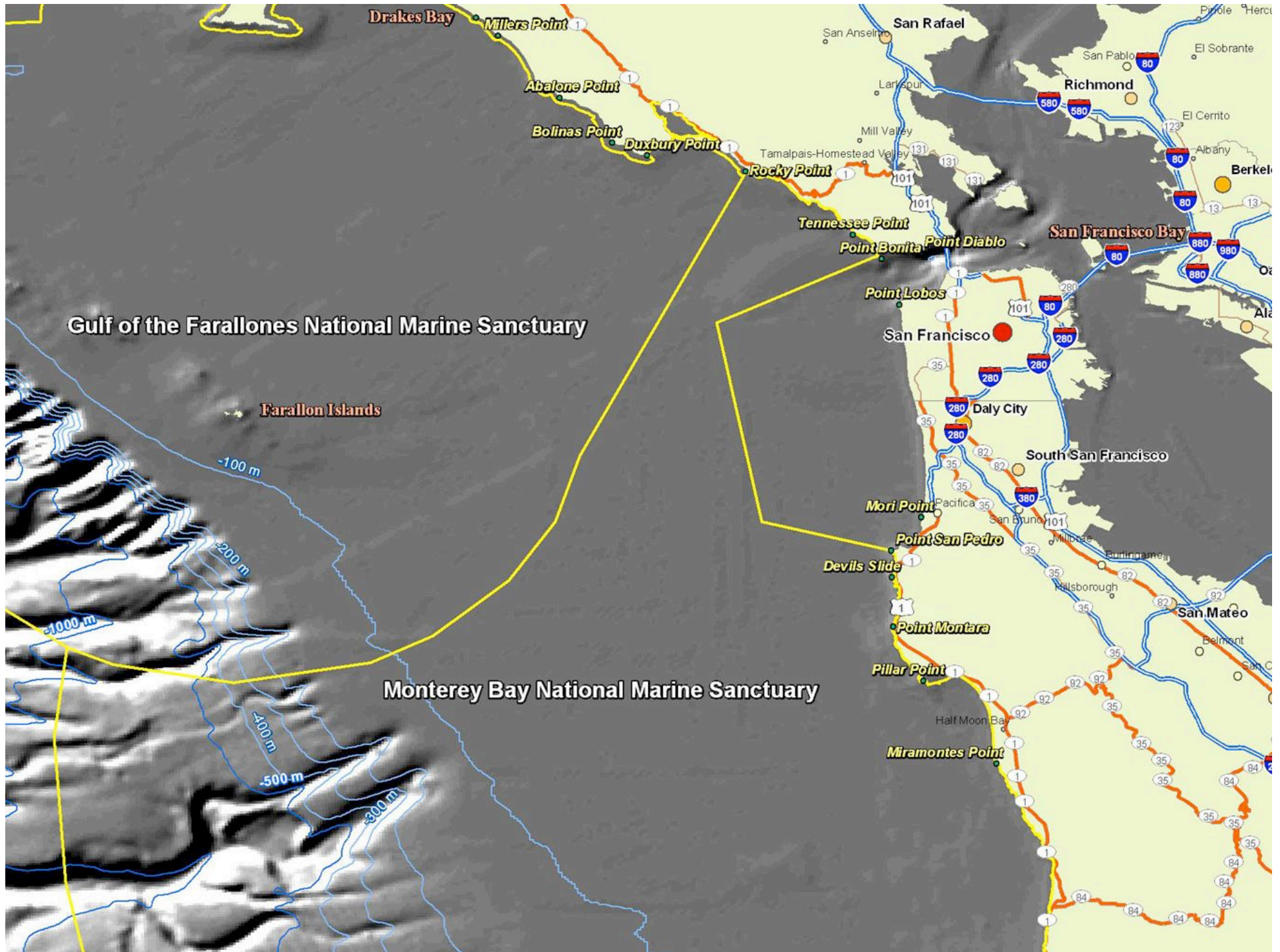
**Presentation to the Gulf of the Farallones
National Marine Sanctuary Advisory Council
April 16, 2009.**

What is the Donut Hole?



The San Francisco-Pacific Exclusionary
Zone of the Monterey Bay National
Marine Sanctuary





Why was the Donut Hole Excluded from the NMSP in 1993?

- Dredge from the Golden Gate channel
- Vessel Traffic inside the Zone
- The proposed San Francisco South West Ocean Outfall (SWOO) Discharge Plume

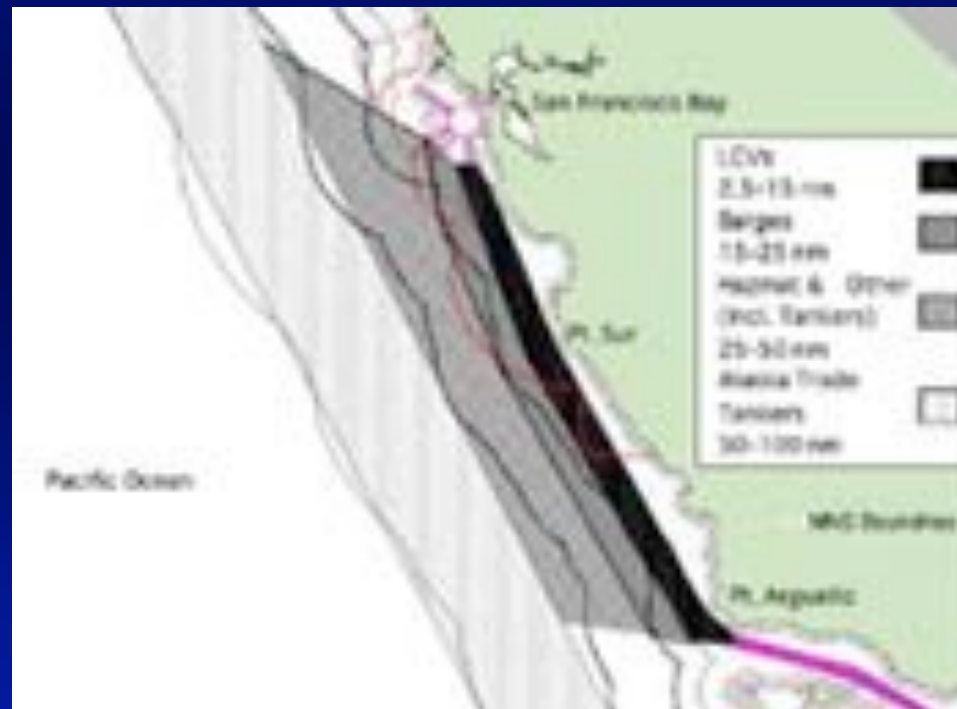
Appendix B. Proposed Notice of Designation and Final Rule Making
Section I: Background PART III: ALTERNATIVES, INCLUDING THE
PREFERRED ALTERNATIVE
I. Section: Boundary Alternatives

- The excluded area (described above) encompasses the anticipated discharge plume of the combined sewer overflow component of the City and County of San Francisco's sewage treatment program, the shipping channel providing access to and from San Francisco Bay, and the Golden Gate dredged material disposal site associated with this channel. NOAA has determined that the nature and level of these activities are not appropriate for inclusion within a national marine sanctuary. By excluding this small area from the Sanctuary, NOAA will be able to focus Sanctuary management on the long-term protection of other areas that contain nationally significant resources and qualities and are less heavily impacted by human activity. By excluding the anticipated discharge plume of the combined sewer overflow from the sanctuary, a buffer zone has been created protecting sanctuary resources and qualities from the discharge.

Dredge Site 8 was under designation



Shipping Lanes were inside the zone



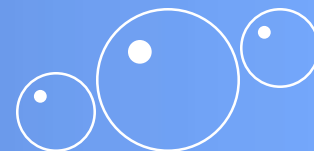
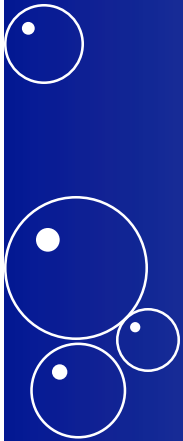
San Francisco Sewerage System



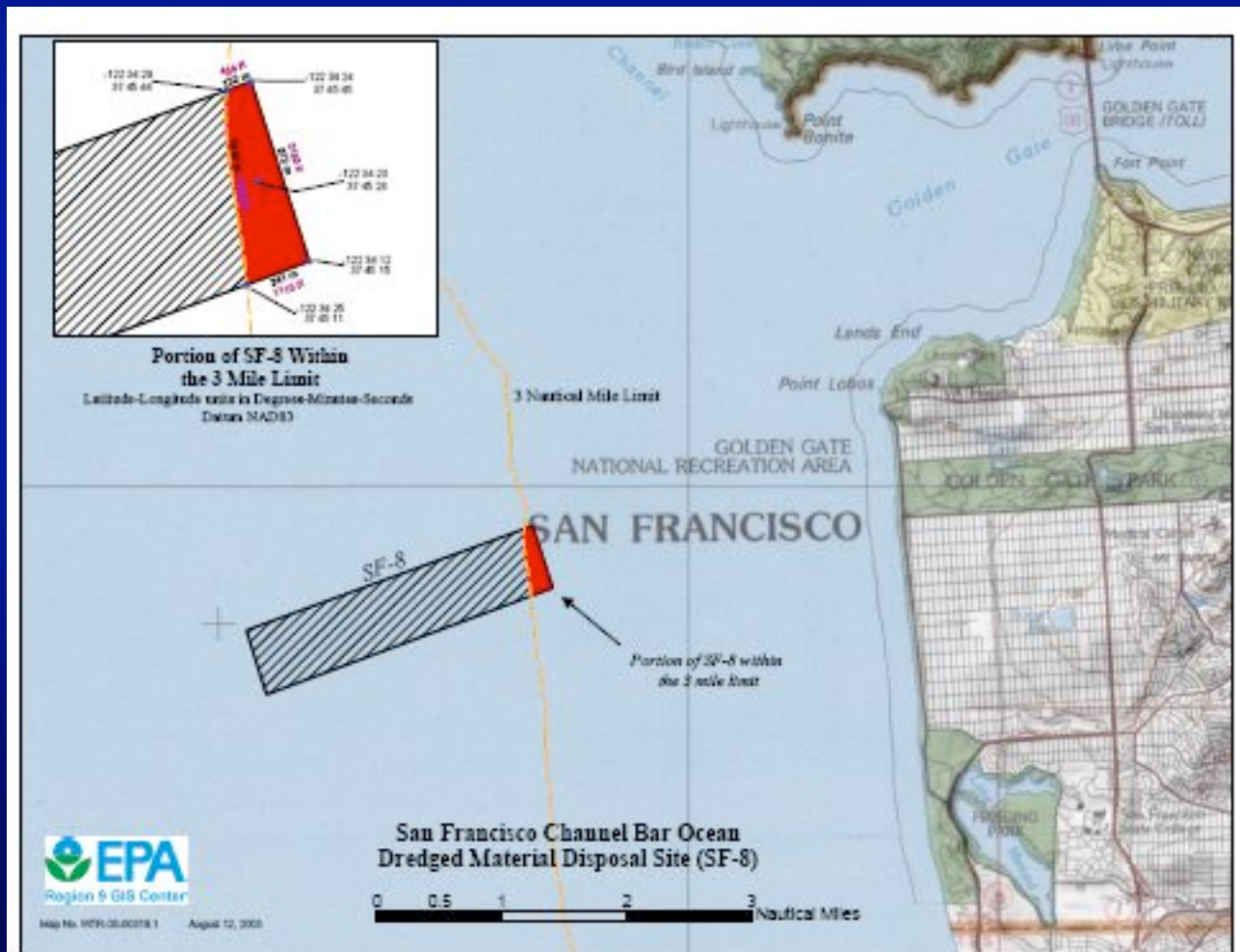
- 1972 and 1987 Aerial views from <http://www.californiacoastline.org/>
- The Sunset Richmond Sewer Plant for the west side of San Francisco, operational since the 1930's. This was a sedimentation plant in Golden Gate Park, replaced by the Oceanside Plant in 1993.



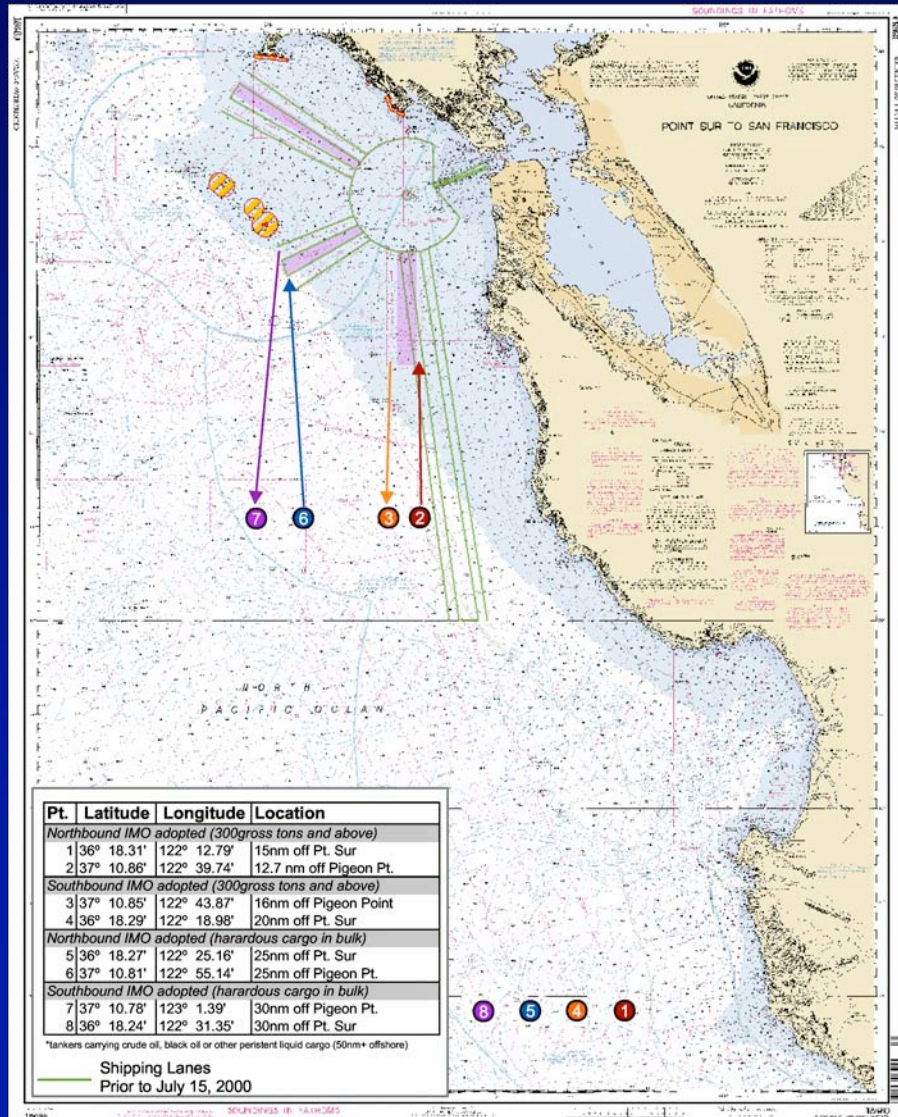
Changes to the Donut Hole since 1993



Dredge site 8 is a depositary for sand from the Golden Gate and Port of Oakland



Shipping Lanes were moved out of the donut hole in 2000



Improvements at the SFPUC

- Oceanside Water Pollution Control Plant became operational in 1993
- Secondary Treatment Capacity of 43 million gallons per day
- Average dry weather flow 18 million gallons per day
- Additional primary treatment of 22 million gallons per day
- 175 million gallons a day wet weather discharge out of pipe at the Southwest Ocean Outfall 4 miles offshore in the Donut Hole¹

1. From a Power Point Presentation to the Gulf of the Farallones National Marine Sanctuary Water Quality Working Group by Arleen Naverrette January 17, 2001

San Francisco Westside Combined Sewer Overflows (CSO)

- CSO's dropped dramatically since the early 1990's:
- from the 70 to 80 per year of 1994 to less than 10 in 2000.

Photo: <http://www.californiacoastline.org/>



The Pacifica Outfall Elimination

**Snapshot Day 2004 – EPA
Region 9 web page
Volunteers testing water
samples from Calera Creek,
Pacifica, CA,**

http://www.epa.gov/region09/features/coast_snapshot/

**Discharge from the tertiary
treatment plant is treated with
ultra violet light and discharged
Into Calera Creek flowing
through the gravel mine site
re-habilitated to a wetland until it
reaches Rockaway Beach**



Carol-Ann Towe of San Mateo
Chapter of the Surfrider Foundation
and Brenda Donald GFNMSAC



Why Open a Can of Worms?

- Our Constituents - The JMPR Scoping Comments
- The JMPR and the Donut Hole
- Local Government Resolutions and Statements of Support
 - San Mateo County Board of Supervisors
 - City of Pacifica
- NGO Support
 - Bluewater Network
 - San Pedro Creek Watershed Coalition
 - Save Our Shores
- Regulate and Review Potential Permits for Energy Exploration and Outfall Discharge

Scoping Meeting Comments

- Comments on including the donut hole:
 - 1 from Point Reyes
 - 2 from San Francisco
 - 13 From Pacifica
 - “Include Pacifica in NMS. Open a can of worms.”
 - 1 from Half Moon Bay
 - 1 from Santa Cruz
 - No comments were pro-donut hole exclusion



More on Pacifica Scoping

174 comments

- 13 for donut hole closure
- 12 for more education
- 5 for PWC ban
- 5 for GF boundary further south

The Joint Management Plan Review

- The GFNMS JMPR Cross Cutting Boundary Team did not address the donut hole issue
- The assumptions of JMPR Boundary Team Draft findings Report of July 11, 2003
- GFSAC Position Paper on the GFNMS southern boundary issue did not address the donut hole boundary

Statement from Speaker pro Tem Yee who represents the 12th Assembly District, which includes San Francisco and San Mateo Counties, as well as the Farallones.

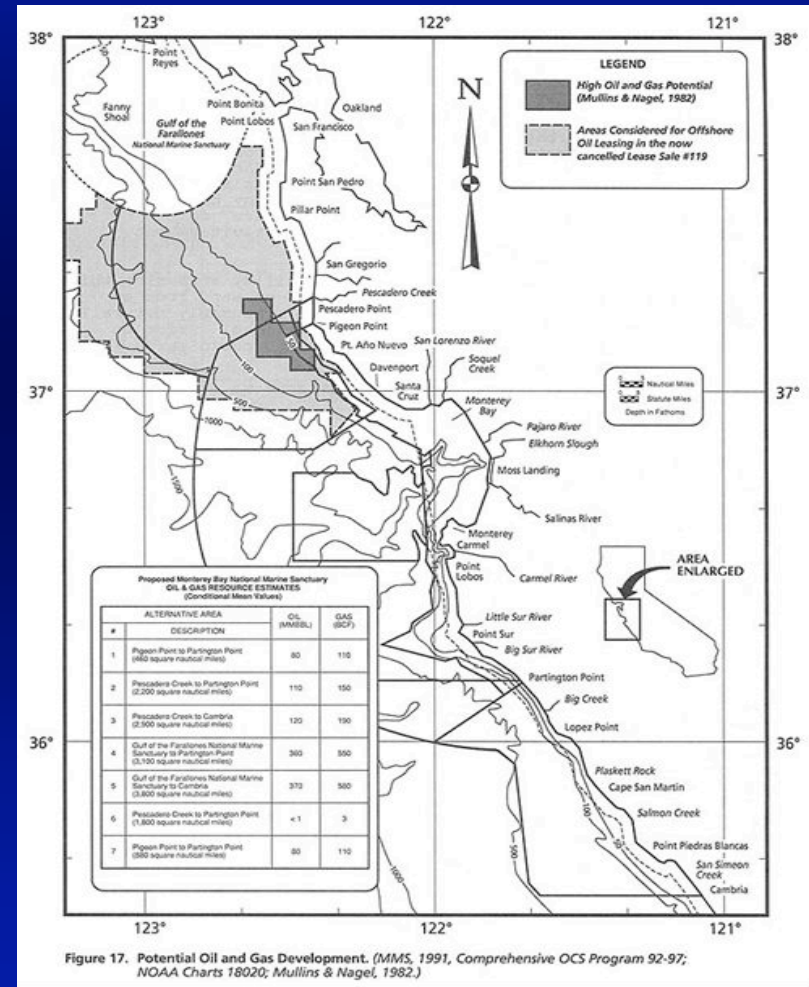
- "I support expanding the Monterey Bay National Marine Sanctuary to include the waters off the coast of Pacifica and we should also try to find ways to include the coastal waters of San Francisco. As long as the Donut Hole exists, our coasts are at risk from those who want to attack our environment. I am proud to have authored AJR 14, California's official statement against lifting the long-standing federal offshore oil drilling moratorium. But as we have seen from the likes of Congressman Pombo, there is a different mindset in Washington. Our coastal waters are under attack. Rather than compromising our sensitive ecosystems, we should be protecting them. Expanding the MBNMS is the right step. As a legislator representing both San Francisco and San Mateo counties, I look forward to working with other environmental advocates to make this happen."

Resolutions

- San Mateo County Board of Supervisors 067157 Calling for National Marine Sanctuary Protection of the Monterey Bay Exemption Zone
- Pacifica City Council Resolution 67-2004 Supporting the Closing of the MBNMS Donut Hole

Energy Exploration

Reminder: Oil and Gas Lease 119 Map



Emerging and ongoing concerns for this unprotected area are: new or expanded outfalls, oil and mineral extraction and the challenges and promise of wave energy technology.



Photo: Don Montgomery



The San Francisco Bay Area has ample marine engineering infrastructure (mooring, dock and crane facilities) to support the demonstration project as well as a notional commercial plant. For commercial plant implementation and O&M, facilities could be located in the Hunters Point Naval Shipyard facility now undergoing economic redevelopment.

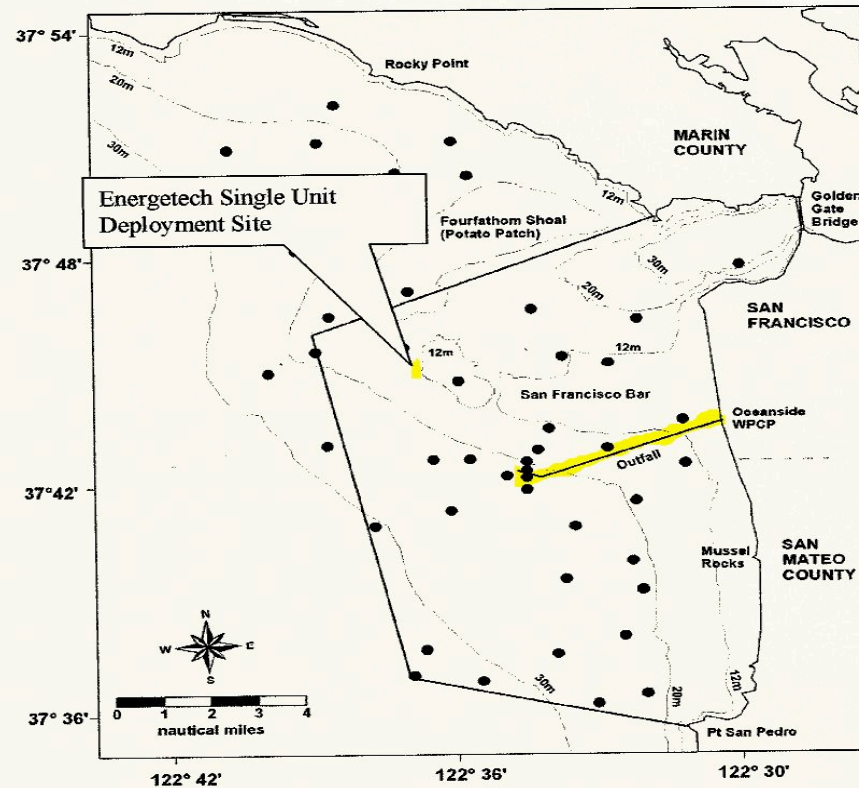


Figure 2: San Francisco exclusion zone, showing environmental monitoring stations and Proposed Energetech Demonstration site in 15m water depth.

Figure 2 shows the San Francisco exclusion zone from the Monterey Bay Marine Sanctuary and the deployment site for the single unit Energetech plant. A depth of 15 meters was desired to stay close to the depth of the current mooring design for the first pre prototype unit being installed at Port Kembla Australia. The northwest side of the little hill to the west



Wave Energy Plant Conceptual Deployment Site 2004

Daly City Stormwater Upgrade Study 2005

Vista Grande Watershed Management
Improvements to reduce flooding and
erosion along Lake Merced

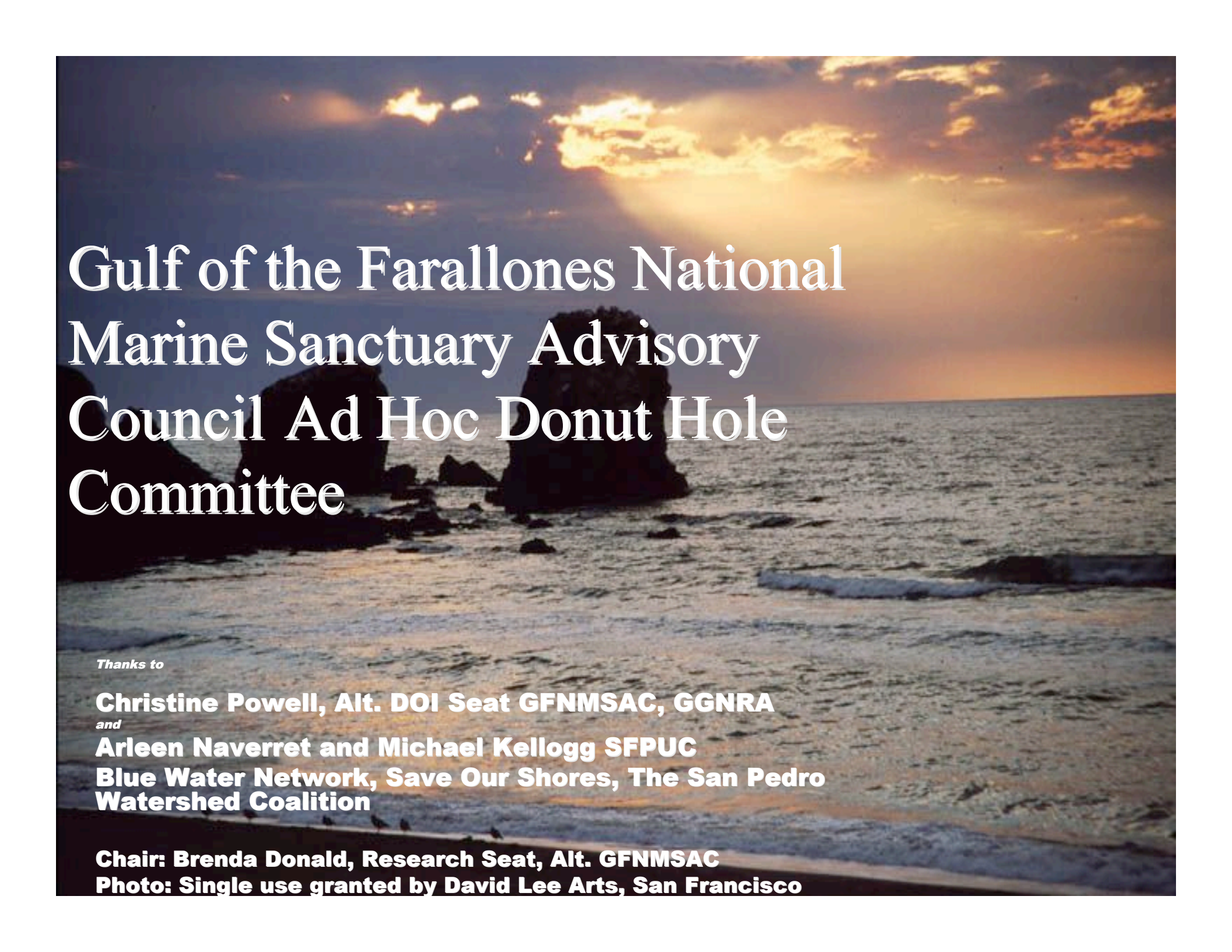
One option of concern: construct a
tunnel 15 feet in diameter to carry up to
1,300 cubic feet of stormwater per
second to the donut hole

A sunset over the ocean with large rocks in the foreground. The sky is filled with orange and yellow clouds, and the sun is low on the horizon. The water is dark with white foam from the waves.

Next Steps:

Recommendations to the Councils and Stakeholders

- Research**
- Review and Advise**
- Educate and Inform**
- Commit to Resolve**
 - interim and long term**
- Sunset the Ad Hoc**



Gulf of the Farallones National Marine Sanctuary Advisory Council Ad Hoc Donut Hole Committee

Thanks to

Christine Powell, Alt. DOI Seat GFNMSAC, GGNRA

and

Arleen Naverret and Michael Kellogg SFPUC

**Blue Water Network, Save Our Shores, The San Pedro
Watershed Coalition**

Chair: Brenda Donald, Research Seat, Alt. GFNMSAC

Photo: Single use granted by David Lee Arts, San Francisco