



Matthew Pickett
CDR, NOAA (Ret)
ONMS Aviation Operations Coordinator



- 1997 - CINMS begins Aerial Surveys
- SAMSAP – **S**anctuary **A**erial **M**onitoring & **S**patial **A**nalysis **P**rogram
- Laptop Computer, GPS, Customized Data Collection Software
- 1000 ft 110 kts 100% visual coverage
- Living Marine Resource Surveys
- Vessel and Visitor Use Surveys

Vessel Distributions (1997 to 2004) *Alternative 1*

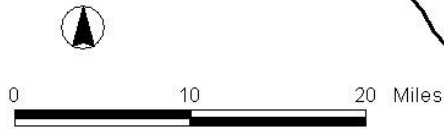
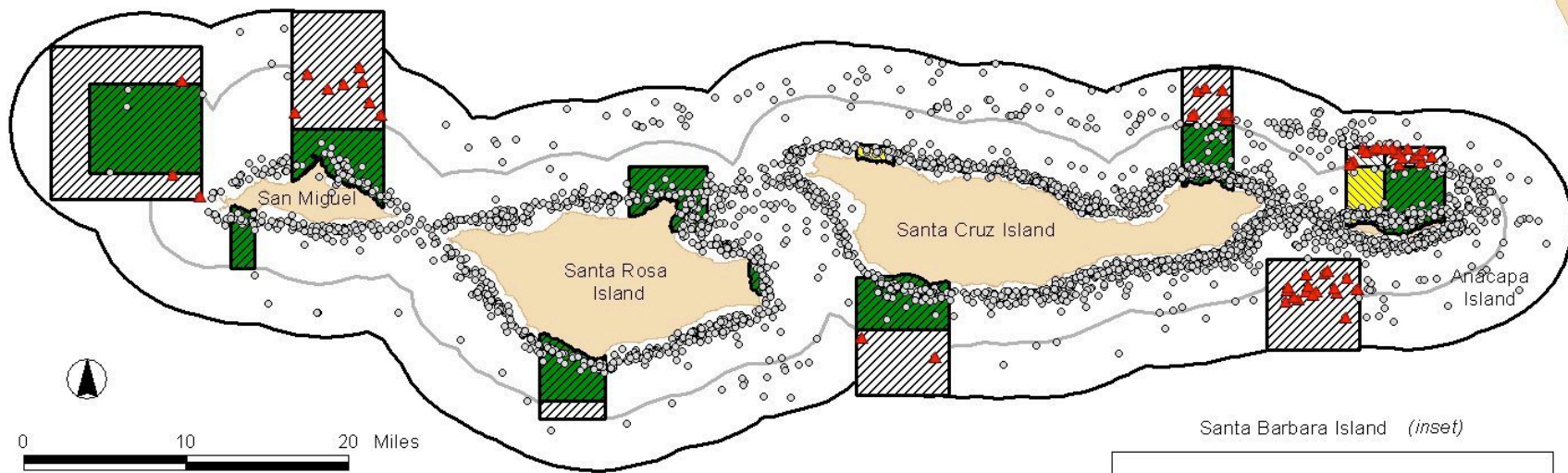


Pt. Conception

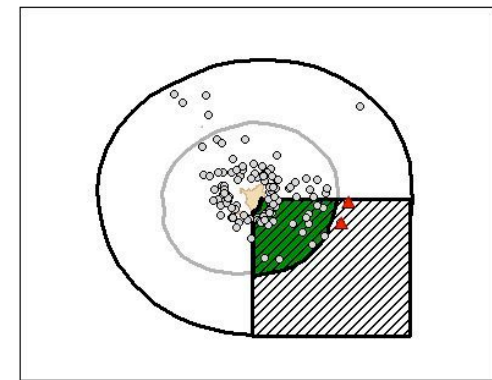
Santa Barbara

Ventura

SANTA BARBARA CHANNEL



Santa Barbara Island (inset)



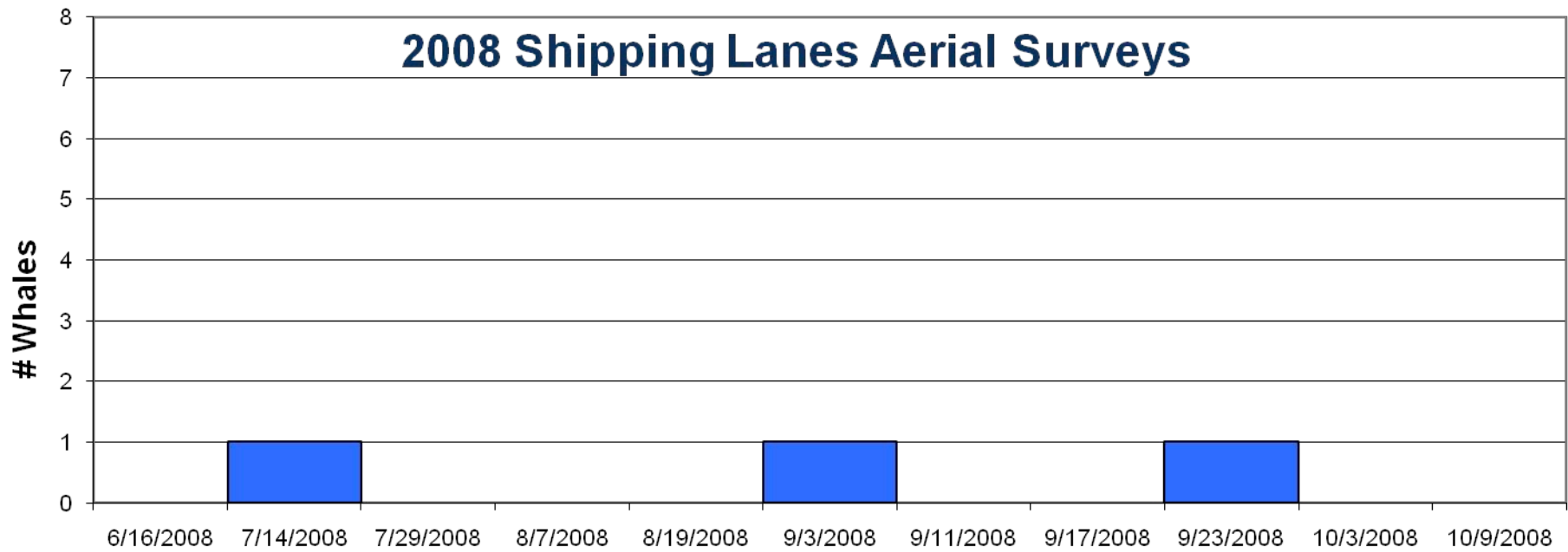
- ▲ Vessels within Additional Area Proposed in Alternative 1 (76)
- Vessels within Sanctuary Boundary (6,866)

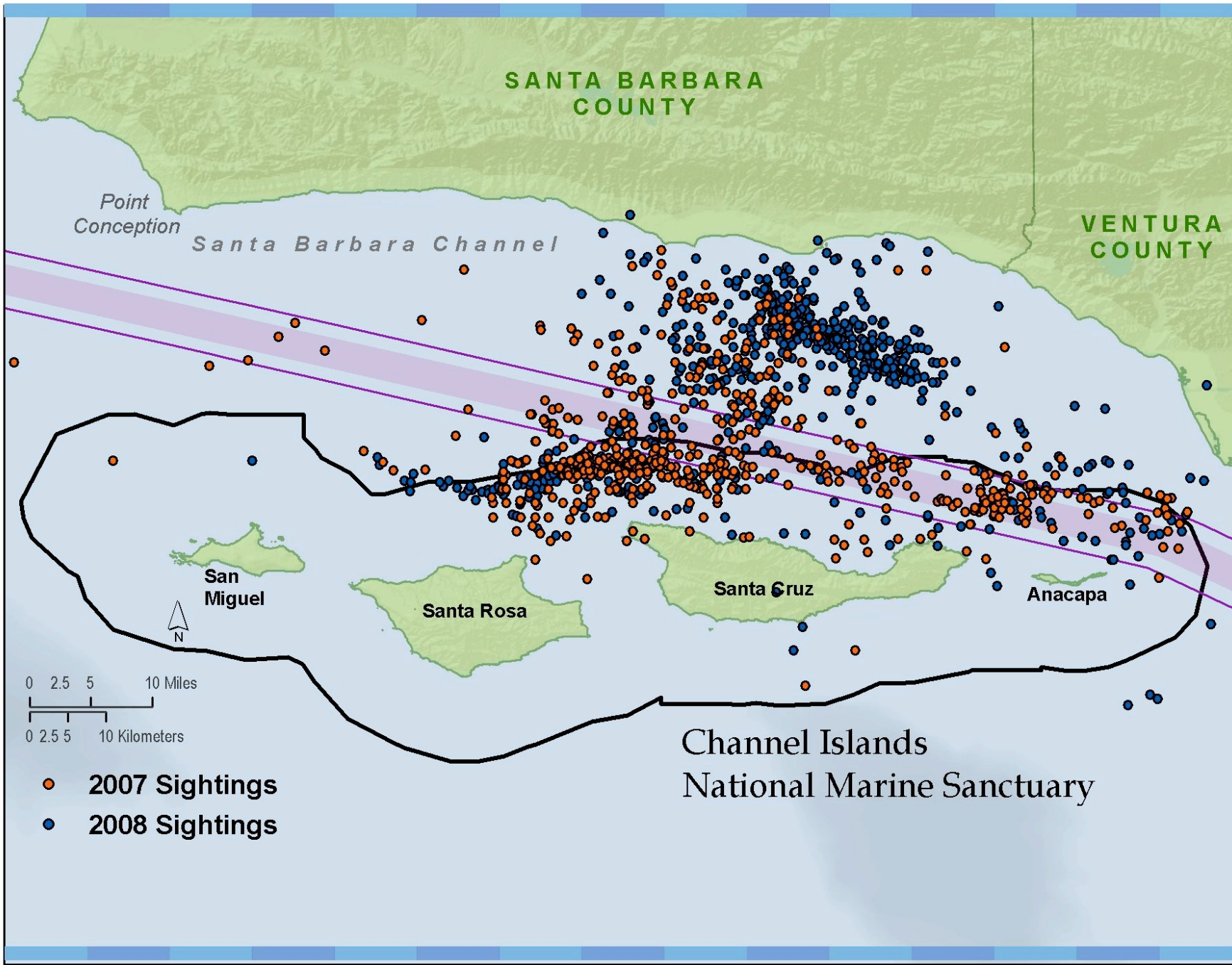
- Federal Marine Reserve
- Federal Marine Conservation Area
- State Marine Reserve
- State Marine Conservation Area

- State Boundary (Mean high water to 3nmi)
- Sanctuary Boundary (Mean high water to 6nmi)



- Summer 2007 – 4 Blue Whales found dead in SB Channel
- Historic SAMSAP data used to determine seasonality and abundance
- Weekly patrol flights initiated to trigger Notice to Mariners
- Ongoing process to explore alternatives for traffic





SANTA BARBARA COUNTY

VENTURA COUNTY

Point Conception

Santa Barbara Channel

San Miguel

Santa Rosa

Santa Cruz

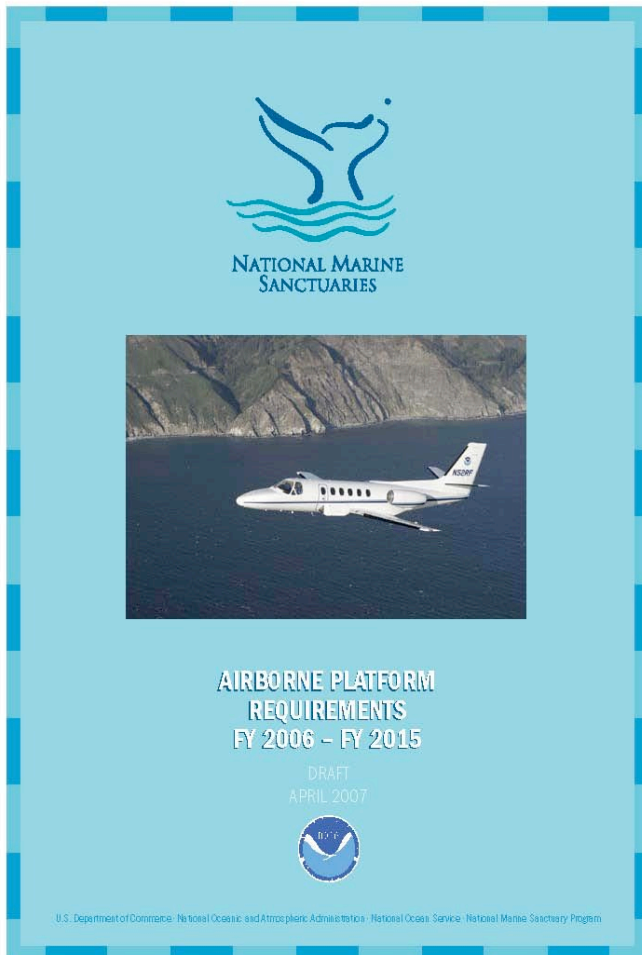
Anacapa

0 2.5 5 10 Miles
0 2.5 5 10 Kilometers

- 2007 Sightings
- 2008 Sightings

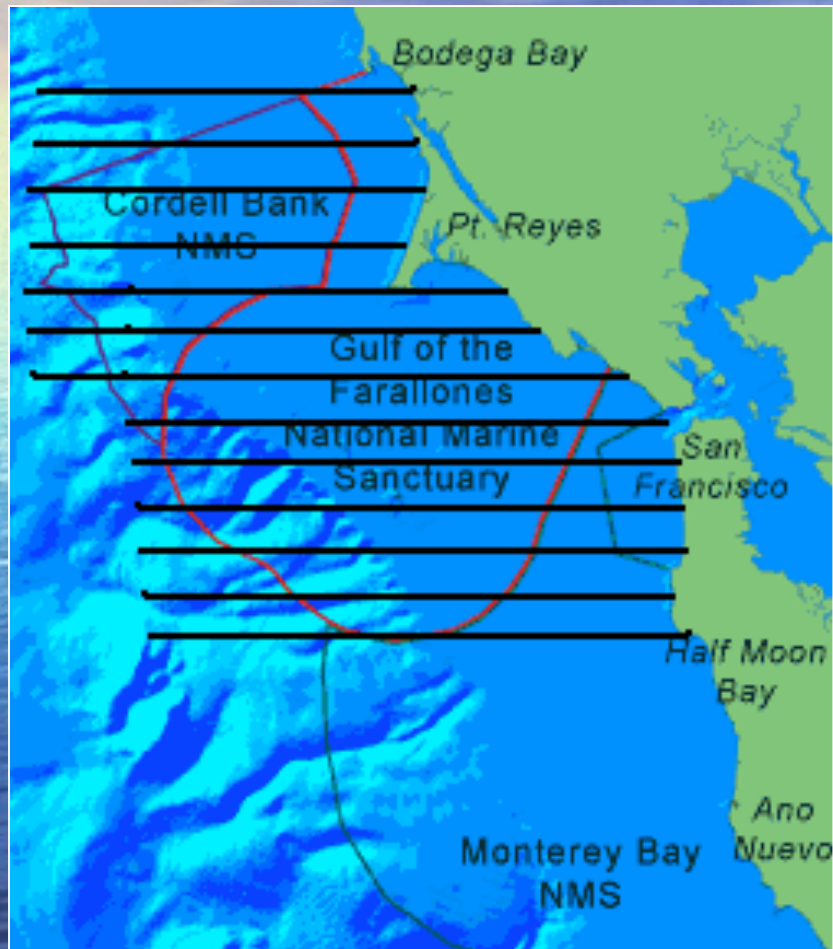
Channel Islands National Marine Sanctuary

ONMS Aircraft Requirements



- Living Marine Resource Surveys
- Vessel and Visitor Use Surveys
- Remote Sensing
- Enforcement
- Emergency Response
- Education/Outreach

GFNMS Aircraft Requirements

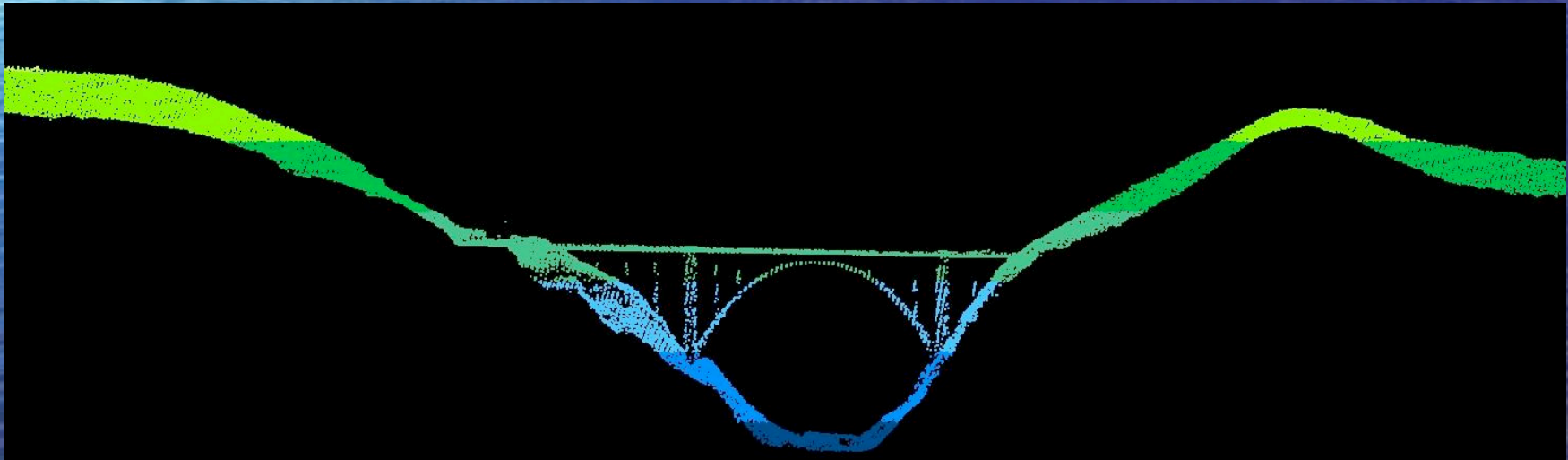


- Monthly Visual Surveys
- Remote Sensing – 5 yr cycle
- Weekly Enforcement Flights
- Emergency Response

Regional Requirements



- GFNMS: 40 hrs → 120 hrs
- CBNMS: 30 hrs → 70 hrs
- MBNMS: 140 hrs → 320 hrs
- CINMS: 350 hrs → 270 hrs
- OCNMS: 80 hrs → 200 hrs



NOAA Twin Otter

A multi-mission platform to support
West Coast National Marine Sanctuaries



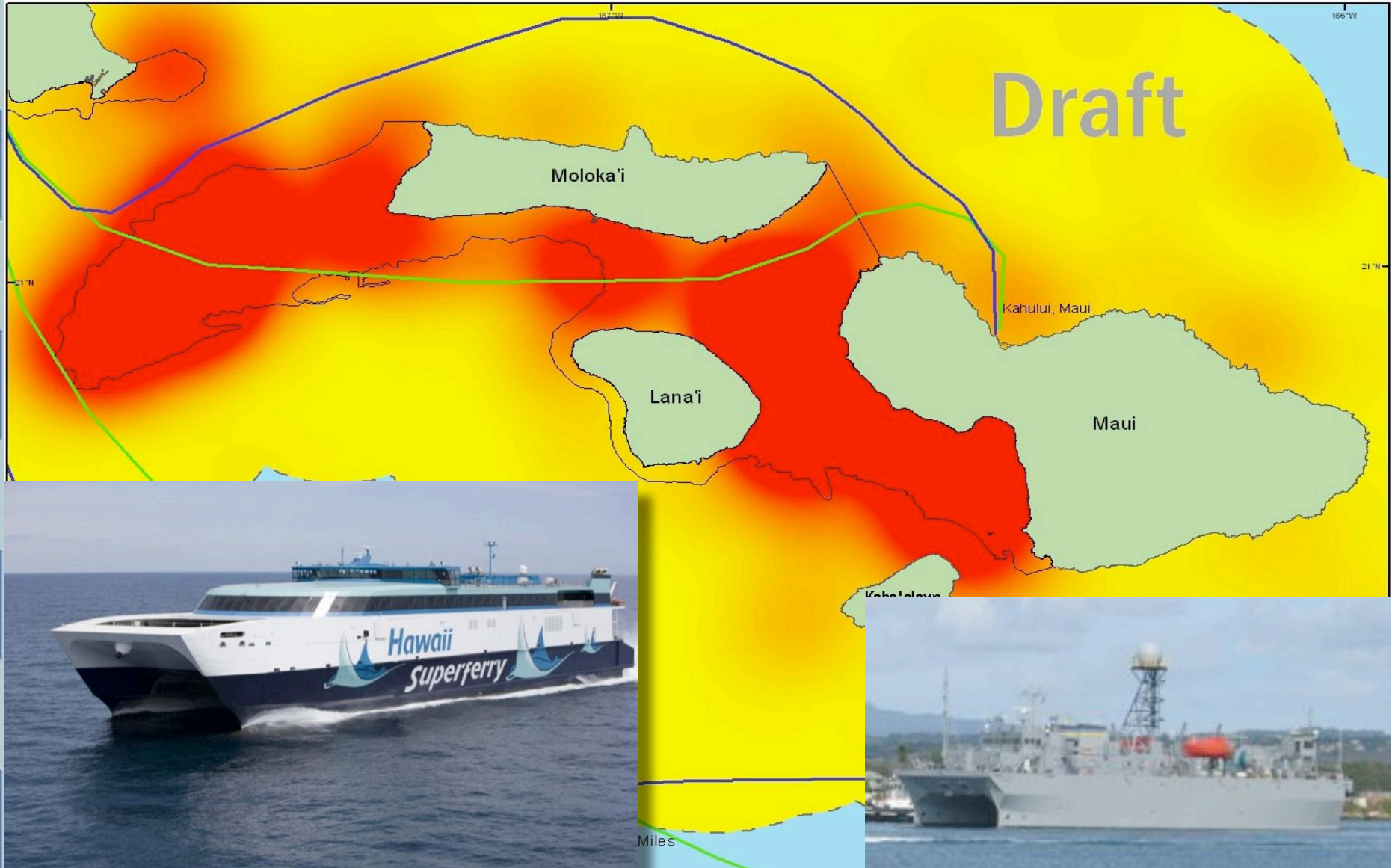
- Twin Engine Turboprop
- Long Endurance
- High Wing, Slow Speed
- Dual Bubble Observer Windows
- Belly Camera and Instrument Port





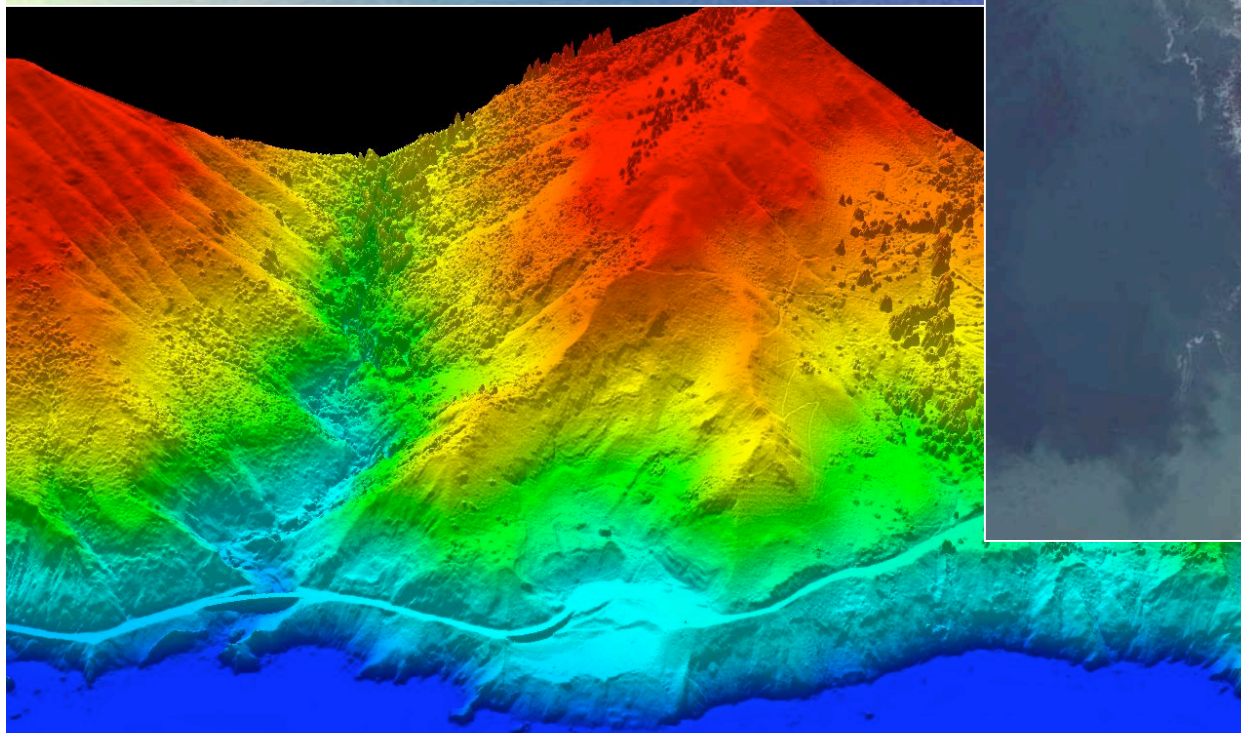
Hawaiian Islands Humpback Whale

Living Marine Resource Surveys

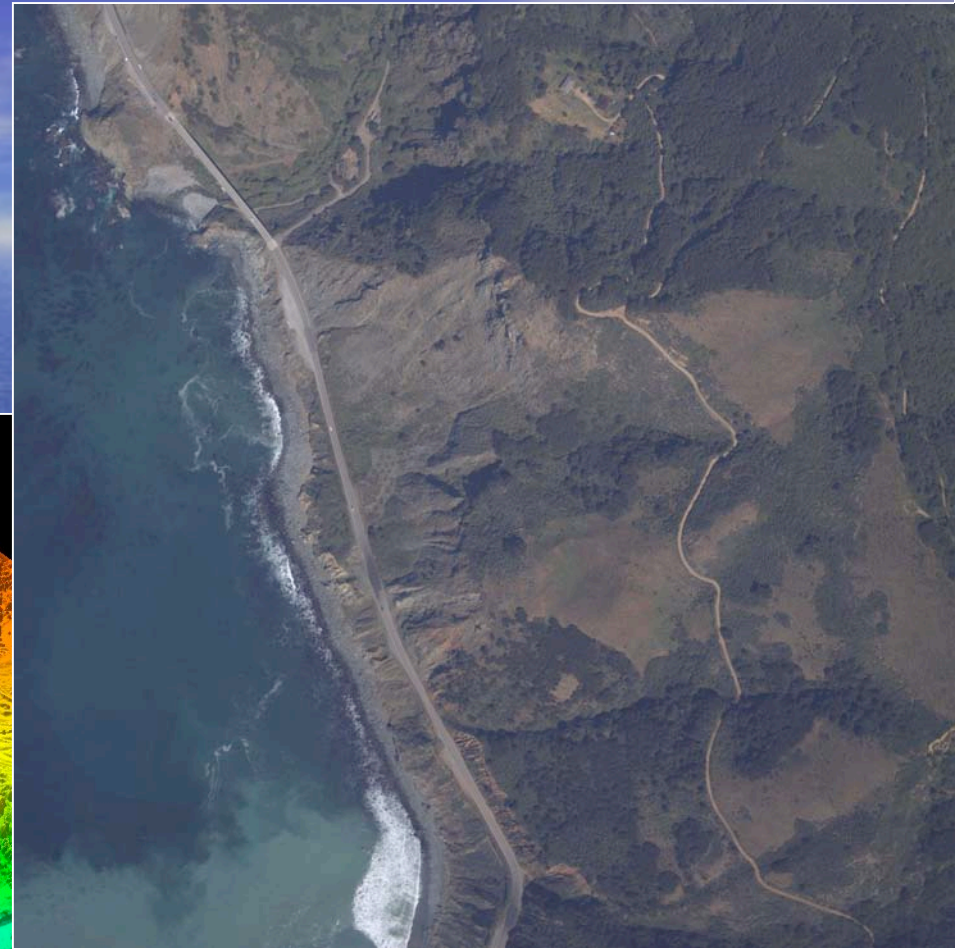


ONMS Remote Sensing

- Watershed Analysis
- Coastal Erosion
- Sea Level Rise

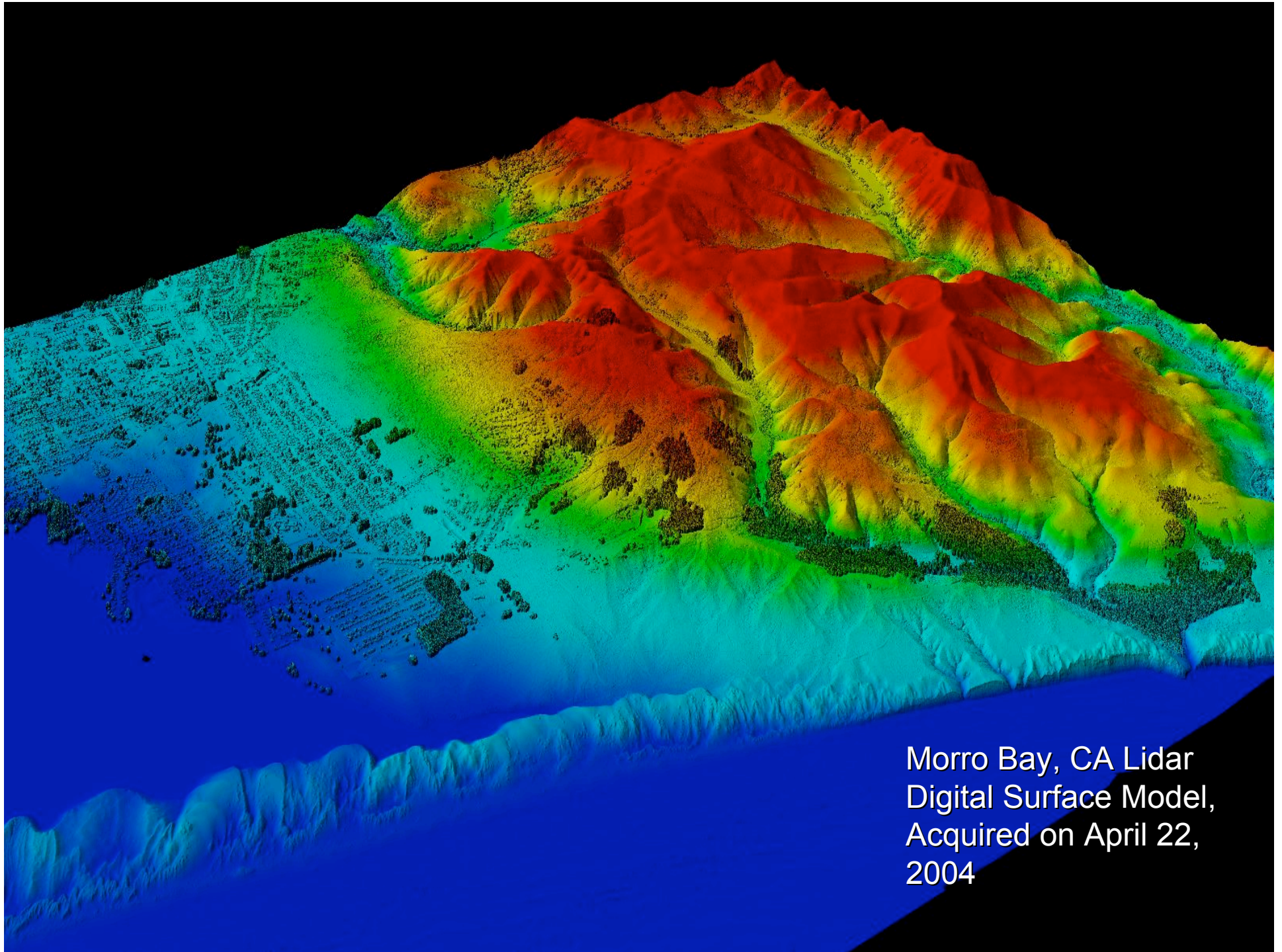


Big Sur LIDAR DSM

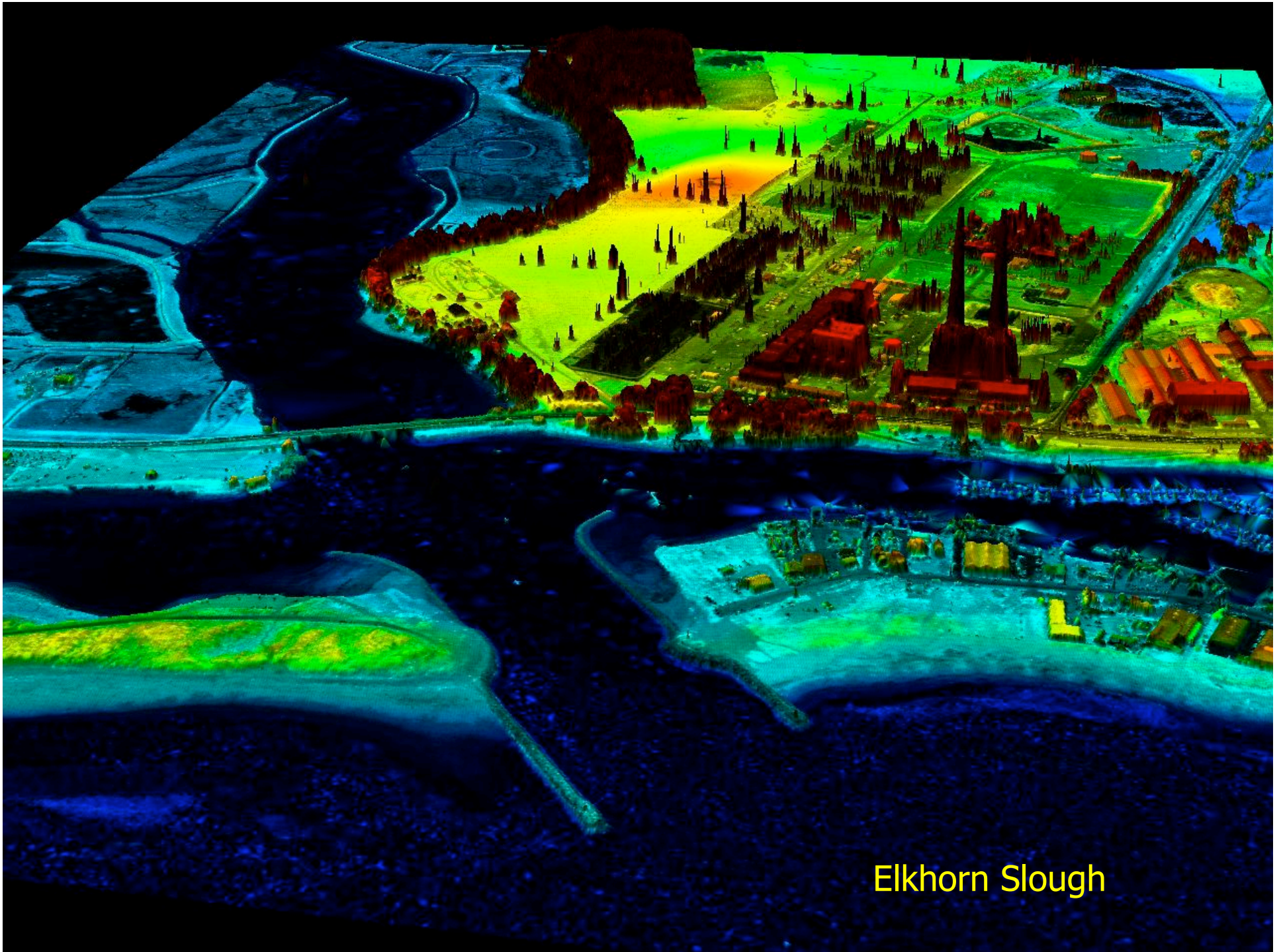


Big Sur Digital Imagery

Data acquired on April
25, 2004



Morro Bay, CA Lidar
Digital Surface Model,
Acquired on April 22,
2004



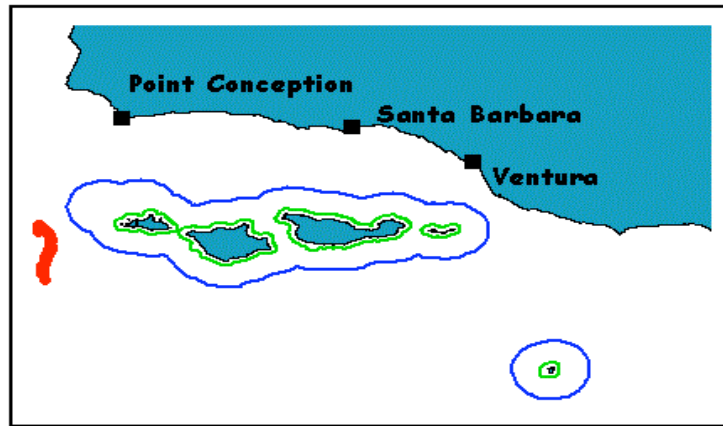
Elkhorn Slough

ONMS Aerial Enforcement

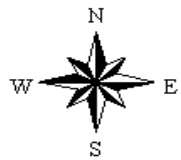


- Support for USCG and CDF&G
- Marine Zone Enforcement
- Shipping Lanes
- Vessel Discharge, No-Anchoring
- Overflight Restrictions

Emergency Response



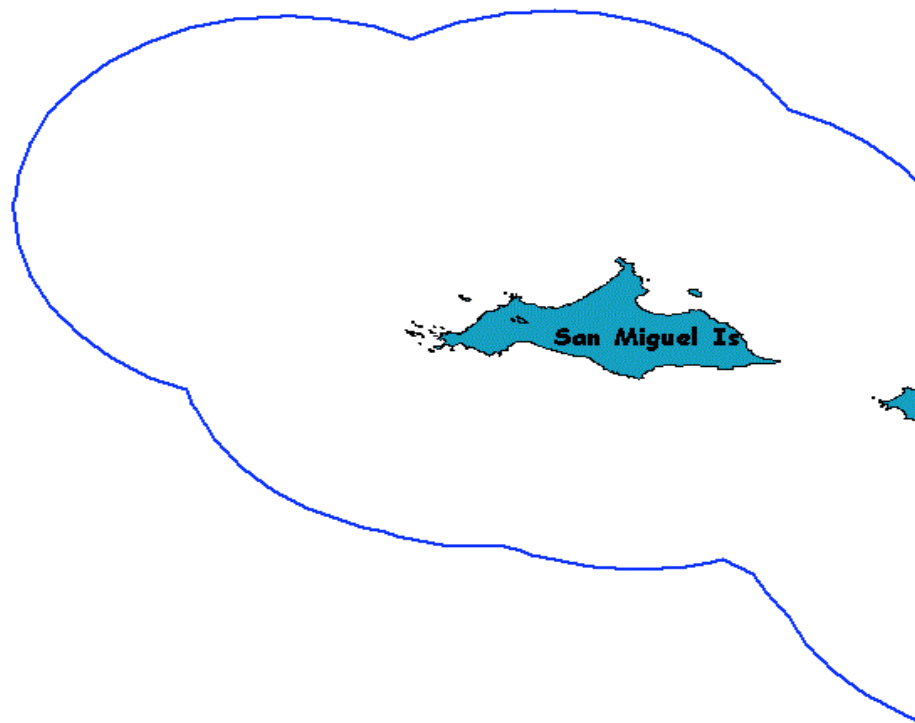
CINMS-NOAA Flights of Reported Oil Spill
27OCT98 Recorded at 1930 and 2330 GMT



~ 13 NMI Length



NOAA-CINMS
Pilot: LCDR Pickett
Crew: Waltenberger
Platform: NOAA64 Fixed Wing



- Sighting two 2330 GMT
- Sighting one 1930 GMT
- CINMS 6NMI Boundary

8 0 8 16 24 32 Kilometers

Education and Outreach



Pacific Dream Machine Airshow 2008
Half Moon Bay Airport

Next Steps

- Update Data Collection Software
- Finalize Survey Protocols with RCs
- Develop Pool of Trained Observers



Questions?

