

The North-Central Coast Region for the MLPA

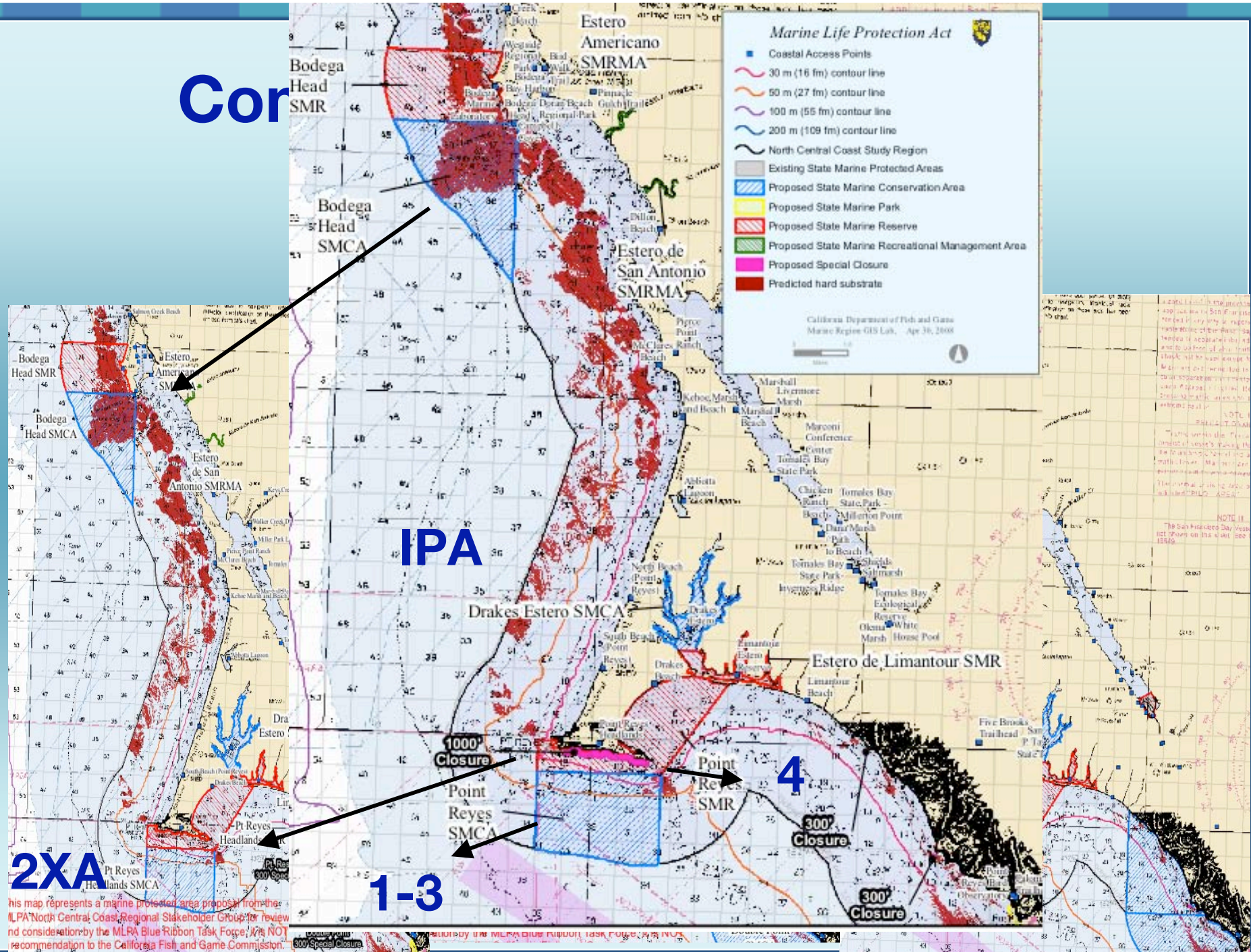
Integrated Preferred Alternative (IPA)



Research

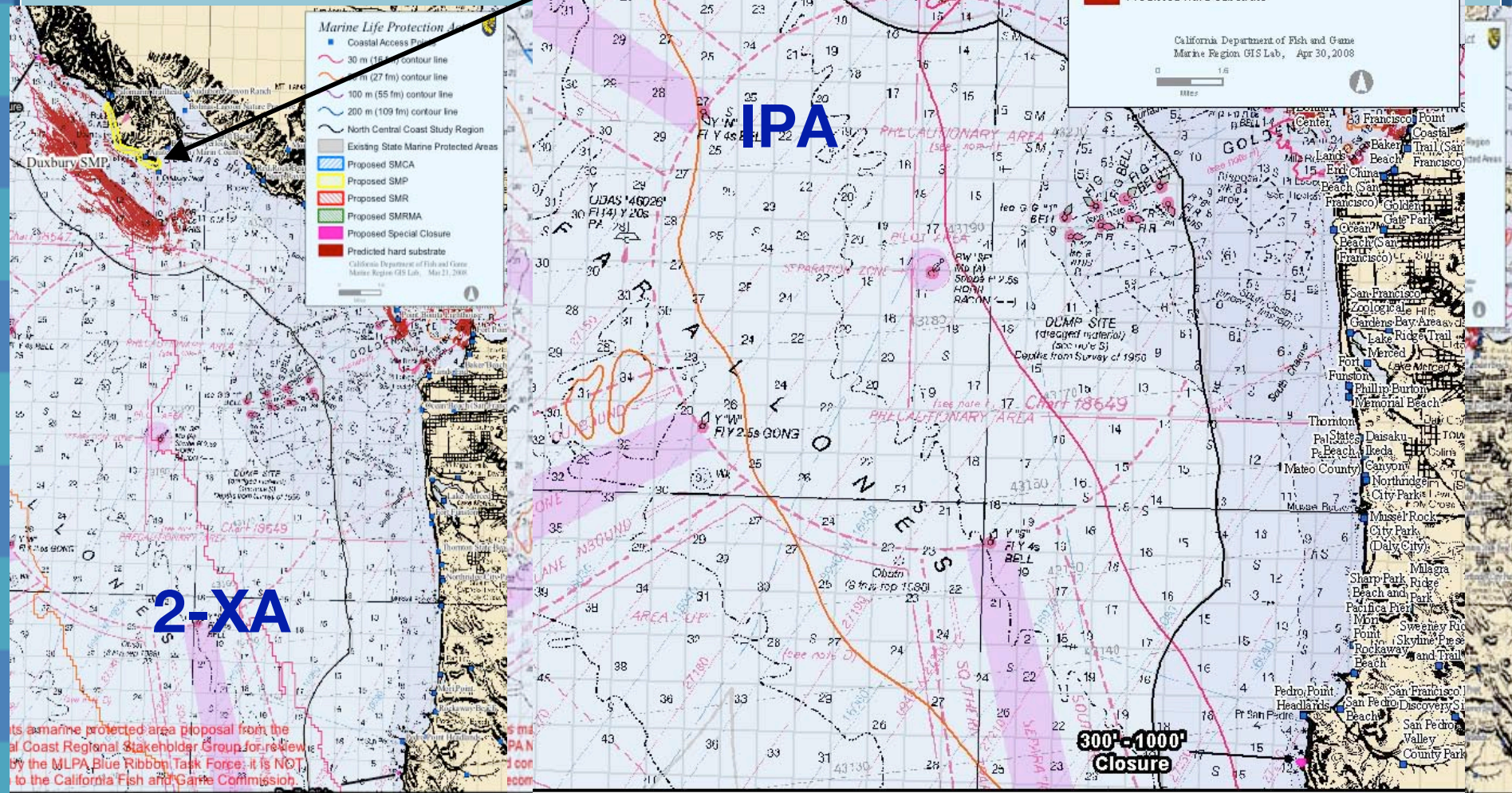


Cor



This map represents a marine protected area proposal from the MLPA North Central Coast Regional Stakeholder Group for review and consideration by the MLRA Blue Ribbon Task Force. It is NOT a recommendation to the California Fish and Game Commission.

Compar



its a marine protected area proposal from the al Coast Regional Stakeholder Group for review by the MLPA Blue Ribbon Task Force; it is NOT to the California Fish and Game Commission.

North Farallon Islands SMR

Marine Life Protection Act

- Coastal Access Points
- 30 m (16 fm) contour line
- 50 m (27 fm) contour line
- 100 m (55 fm) contour line
- 200 m (109 fm) contour line
- North Central Coast Study Region
- Existing State Marine Protected Areas
- Proposed State Marine Conservation Area
- Proposed State Marine Park
- Proposed State Marine Reserve
- Proposed State Marine Recreational Management Area
- Proposed Special Closure
- Predicted hard substrate

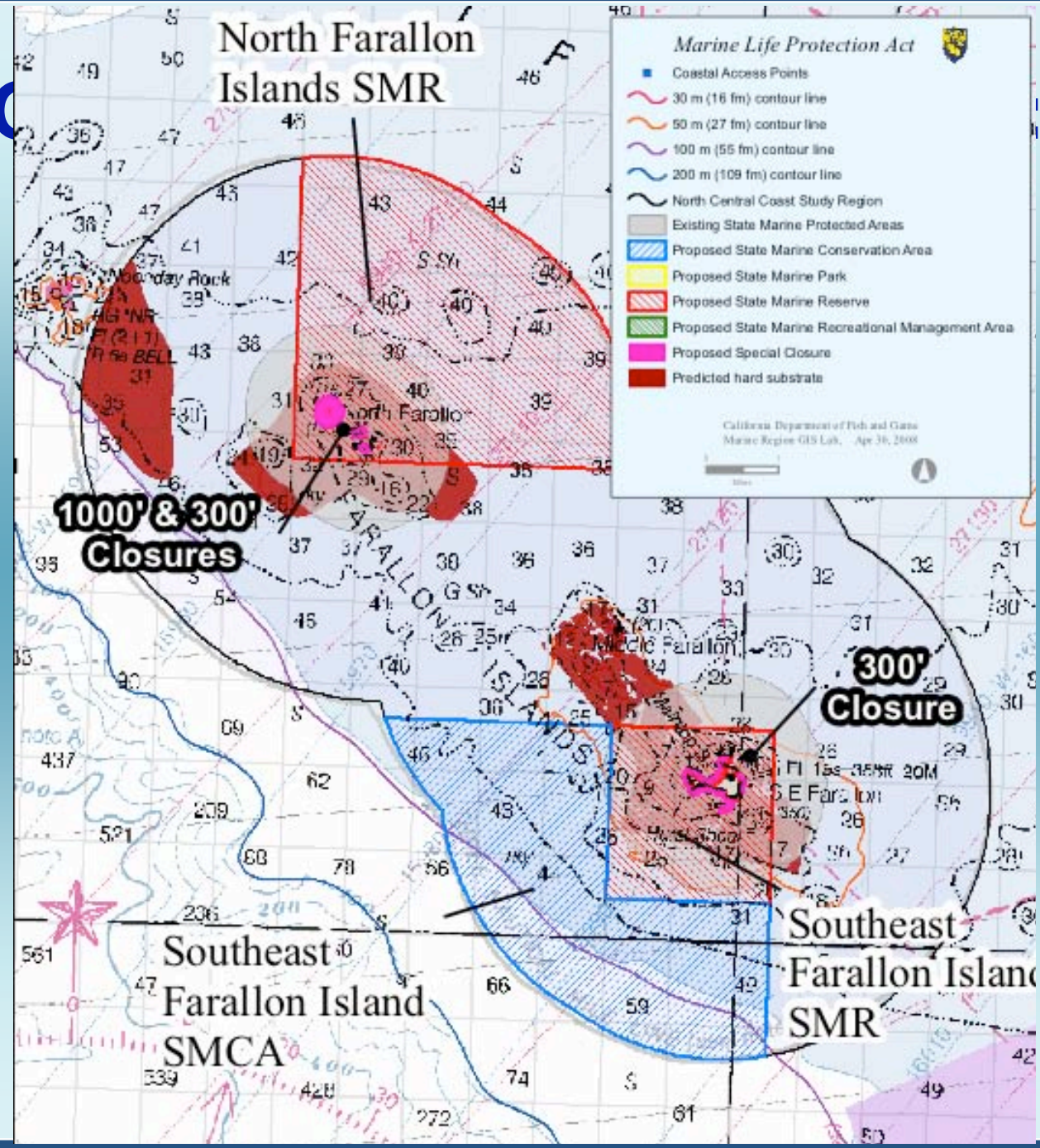
California Department of Fish and Game
Marine Region GIS Lab - Apr 30, 2008

1000' & 300' Closures

300' Closure

Southeast Farallon Island SMCA

Southeast Farallon Island SMR



Comparison of Alternatives

Area Type / Proposal	0 (Existing)	1-3	2-XA	4	IPA
Marine Protected Area (MPA)¹					
State Marine Reserve	1 (<1%)	12 (11%)	9 (9%)	15 (14%)	11 (11%)
State Marine Conservation Area	10 (3%)	10 (10%)	8 (9%)	12 (13%)	9 (8%)
State Marine Park	2 (<1%)	1 (<1%)	1 (<1%)	1 (<1%)	2 (1%)
<i>Total MPAs</i>	<i>13 (4%)</i>	<i>23 (22%)</i>	<i>18 (18%)</i>	<i>28 (27%)</i>	<i>22 (20%)</i>
State Marine Recreational Management Area (SMRMA)					
State Marine Recreational Management Area	0 (0%)	0 (0%)	3 (<1%)	0 (0%)	2 (<1%)
Special Closures					
Special Closures ²	0 (0%)	7 (<1%)	5 (<1%)	7 (<1%)	6 (<1%)



The IPA Special Closure Package

6 Special Closures

- Point Reyes*
- Point Resistance
- Stormy Stack
- Devil's Slide Rock
- North Farallon Islands
- South East Farallon Island*

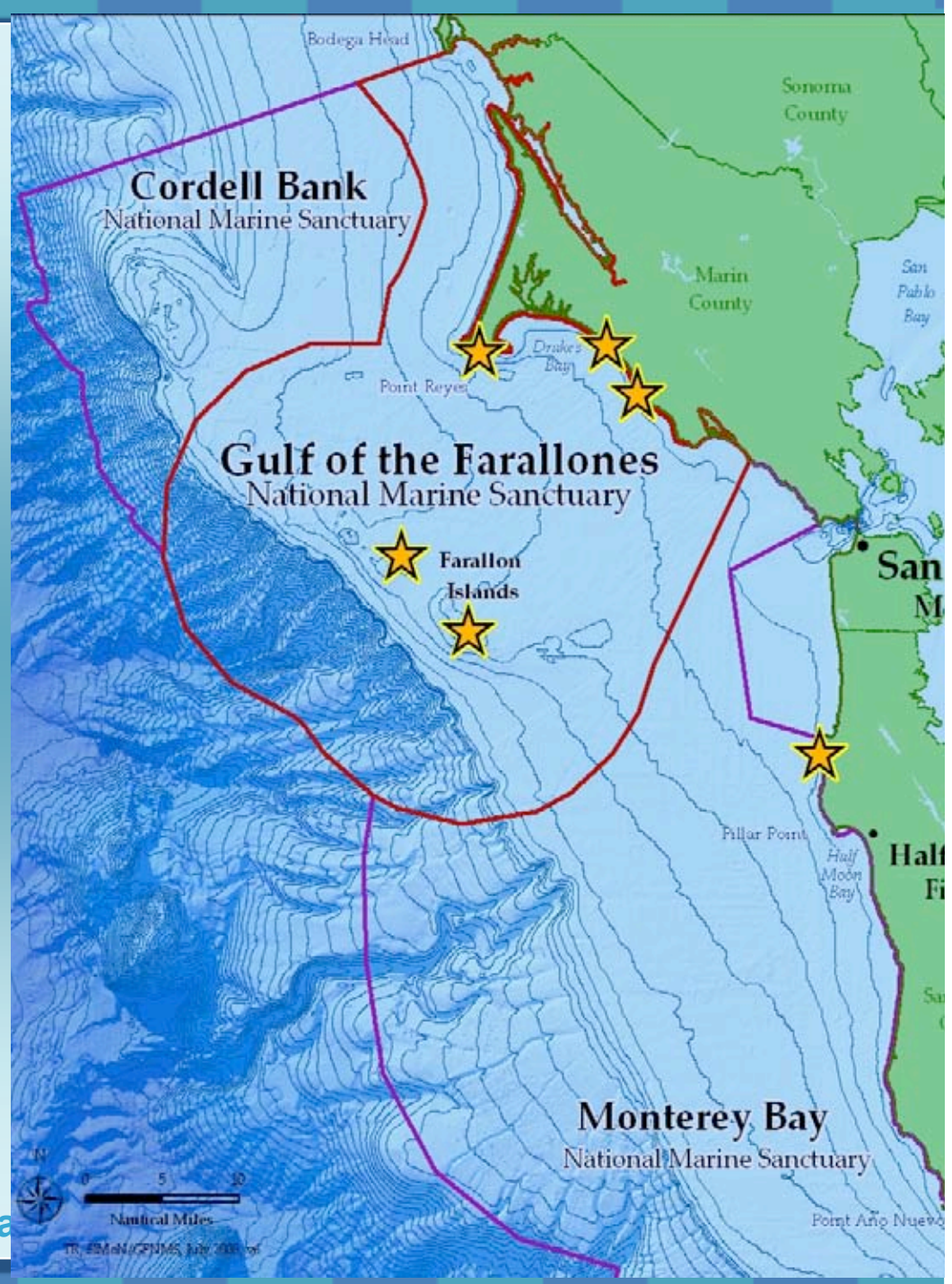
Why?

- Large historic populations
- High species diversity
- Known issues with disturbance



* indicates modification of current closure

Research • Educa



Disturbance comes from 3 main sources



1. Low flying aircraft



2. Close approaching boats, kayaks, personal watercraft



3. Humans on foot



Point Reyes Headlands

Action: Modification of current closure

Colony Size: more than 43,000, largest mainland colony

Sensitive Wildlife: Nine nesting seabird species, including murrelets, Pigeon Guillemot, Cormorant, guillemots, Western gulls, Rhinoceros auklets, and roosting Brown pelicans.

10,000 birds on west side not covered



Point Resistance

Action: New closure

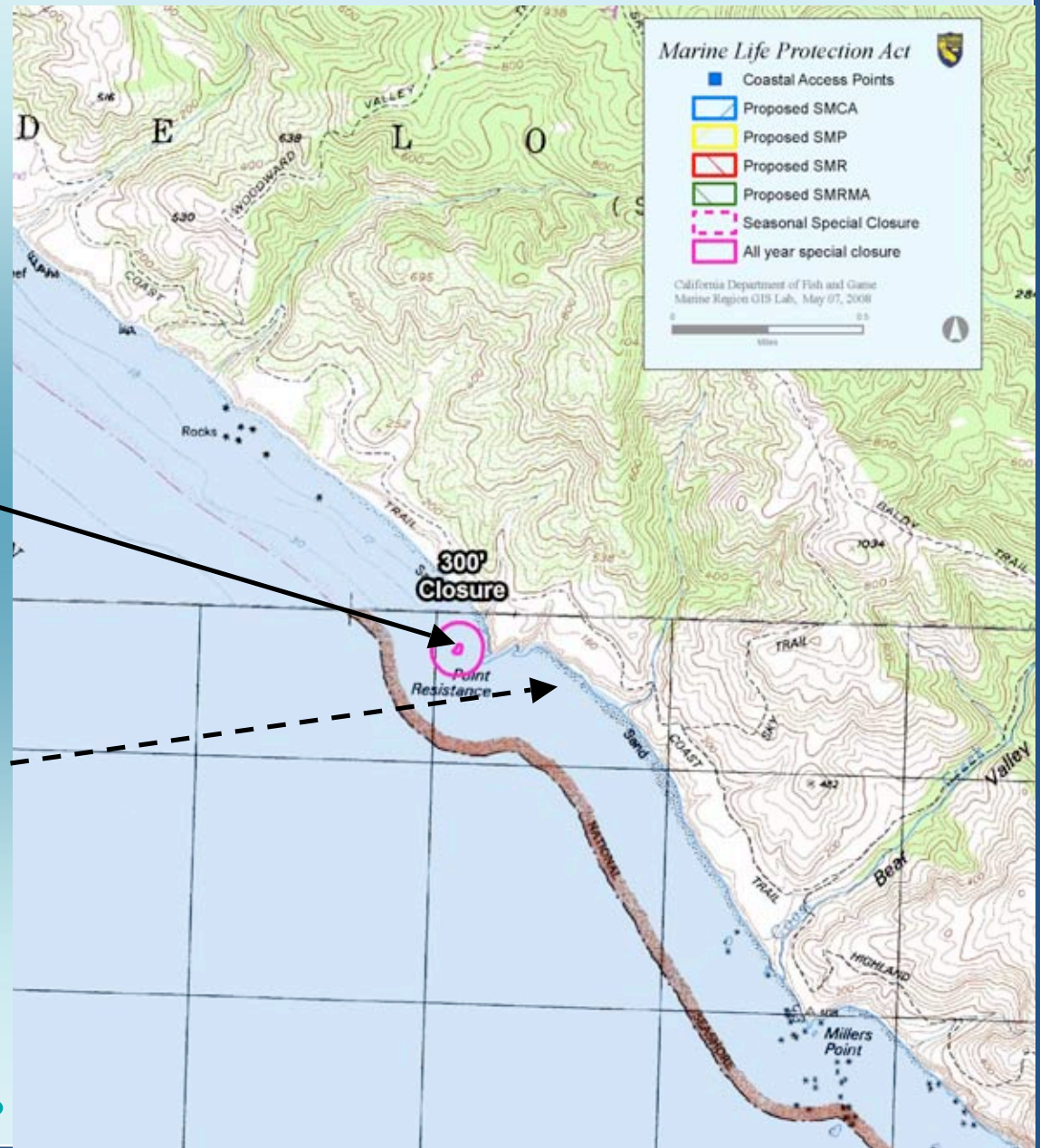
Colony Size: ~16,000

Sensitive Wildlife:

- Large Common Murre colony and roosting Brown pelicans on rock from waterline up to peak of rock.
- Pelagic cormorants in cove and Pigeon guillemots in caves.



Research •



Stormy Stack

Action: New closure

Colony Size: over 16,000

Sensitive Wildlife:

- Large and diverse population of Common Murres, Brandt's Cormorants, Pelagic Cormorants, Pigeon Guillemots, and Ashy Storm Petrels.
- About 700-1000 harbor seals in haul-out and breed along beach; California sea lions haul out on islets.



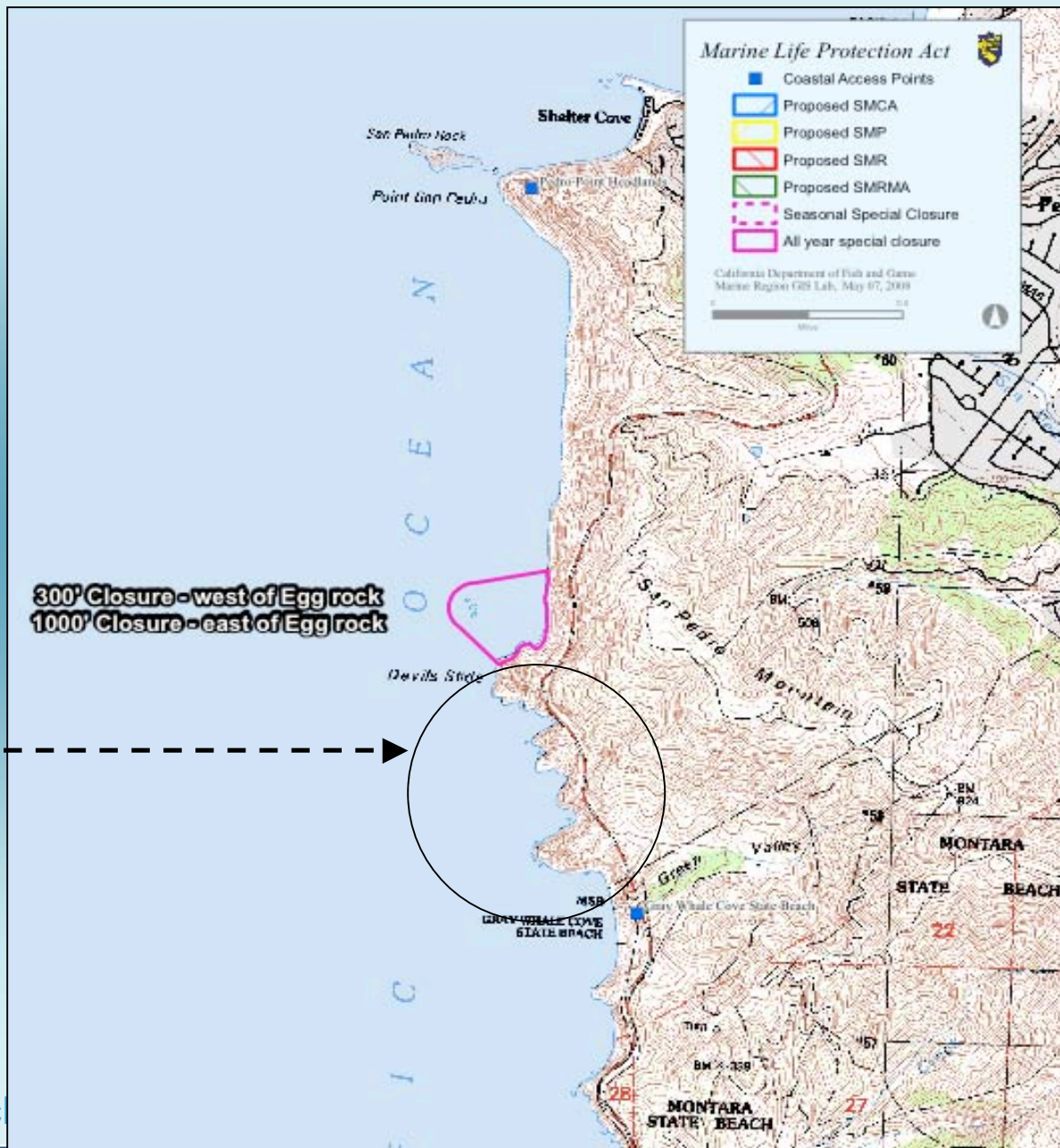
Devil's Slide

Action: New closure

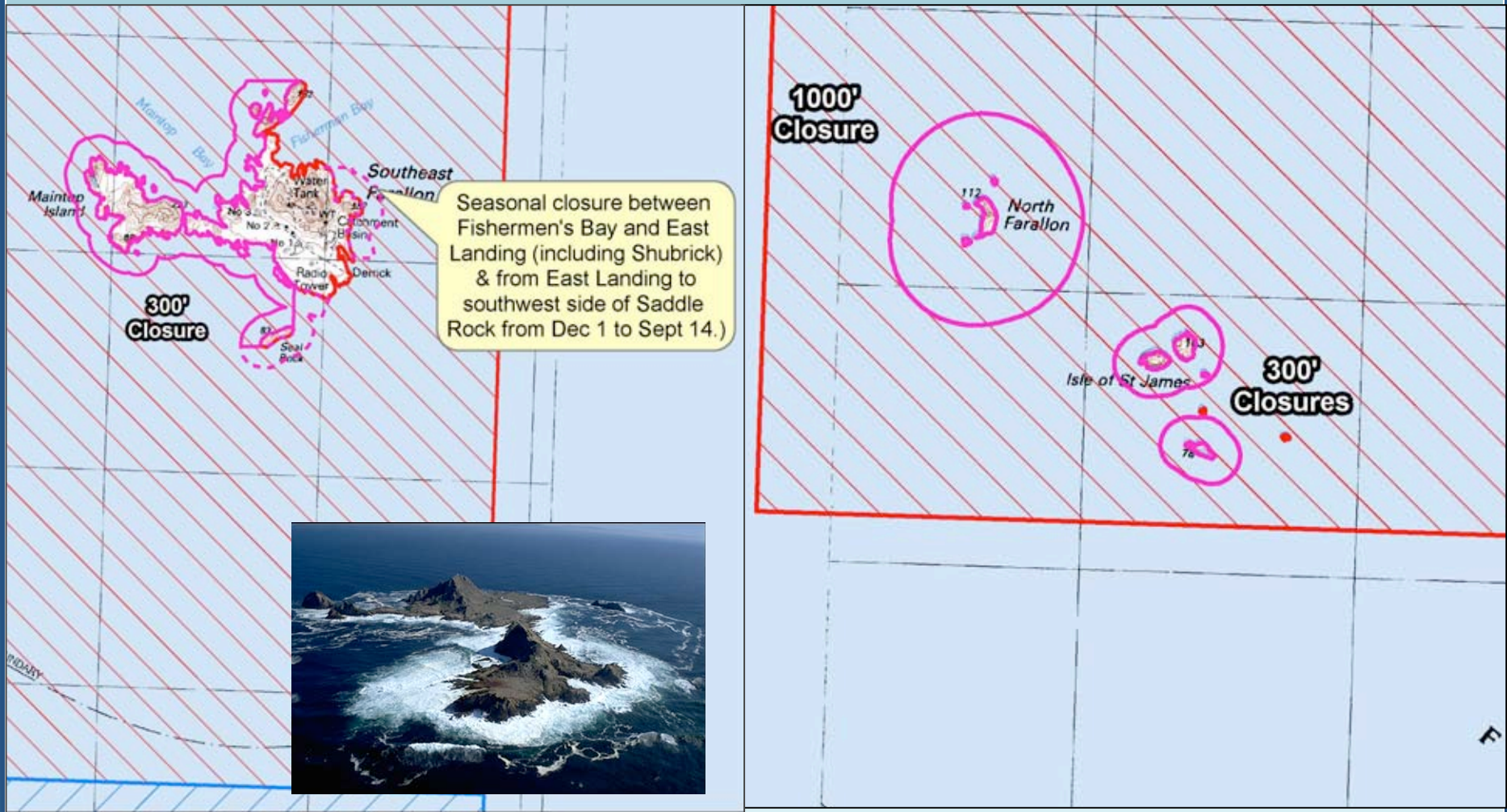
Colony Size: less than 1,000

Sensitive Wildlife:

- Common Murre, Brandt's Cormorants on Devil's Slide.
- Pigeon Guillemot, Pelagic Cormorant, Western Gull, and Black Oystercatcher colonies extend south along the mainland to Gray Whale Beach, along with roosting Brown Pelicans.



Farallon Islands



Sanctuary and Advisory Council Comments

Options

- SAC Recommendations on IPA
- Special Closure Resolution
- SAC Guidance to Sanctuary on IPA

