

Civil Report Card On GPS Performance

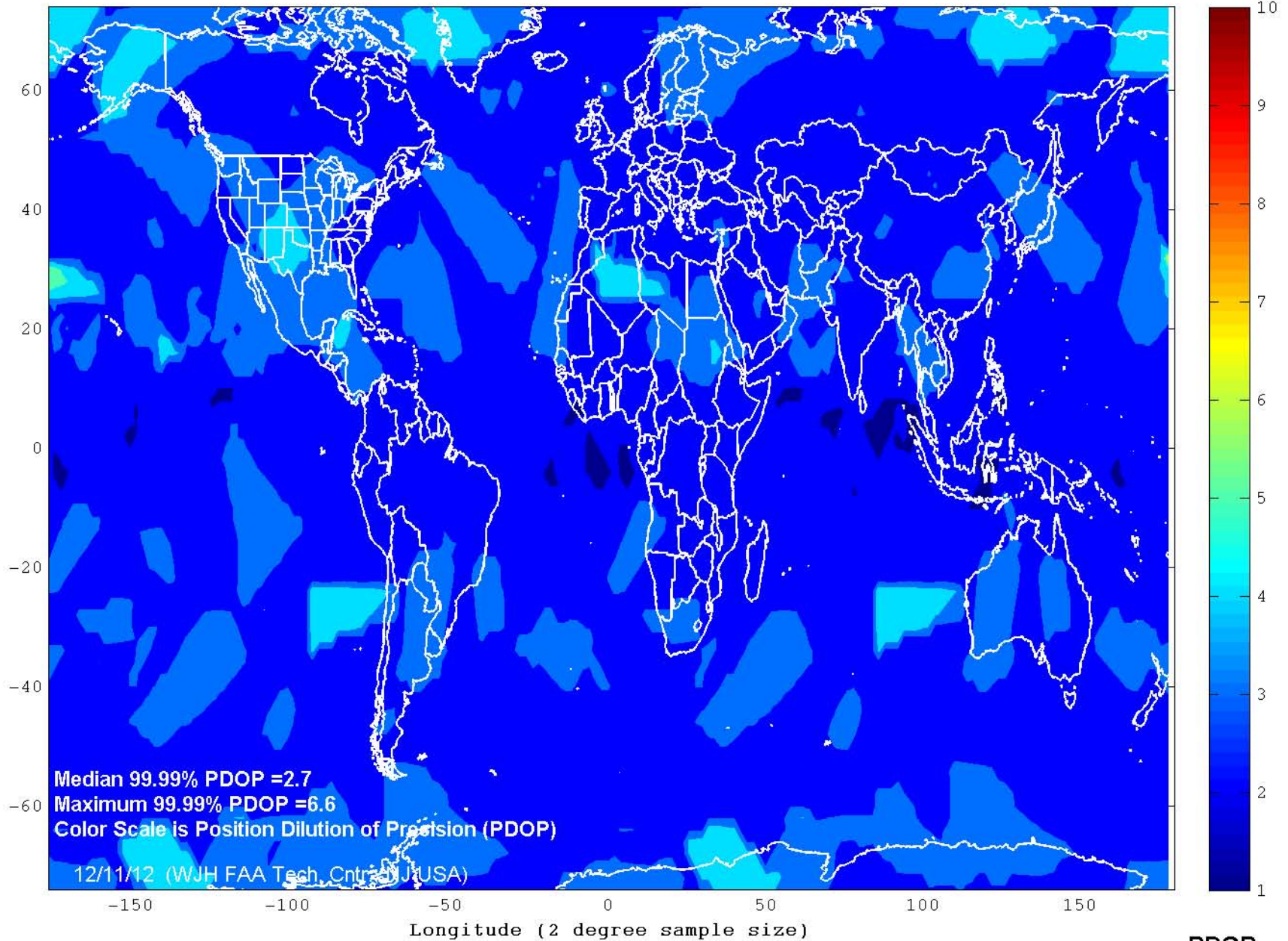
November 2012

Operational Performance Parameter	CY 2011	Oct 2012	Nov 2012	Long term	Short term
Availability Parameters					
<i>Average Number of satellites usable</i>	30.65	30.99	30.97	↑	↓
<i>Average number of satellites usable in primary slots</i>	23.78 (99.10%)	24.00 (100%)	23.97 (99.90%)	↑	↓
<i>Average availability of 6 satellites in view</i>	99.99%	100%	99.99%	→	↓
99.99% Horizontal DOP					
<i>Area Median</i>	1.5	1.3	1.3	↑	→
<i>Worst Site</i>	3.0	2.2	2.7	↑	↓
99.99% Vertical DOP					
<i>Area Median</i>	2.8	2.4	2.4	↑	→
<i>Worst Site</i>	5.8	4.5	6.4	↓	↓
99.99% Position DOP (PDOP)					
<i>Area Median</i>	3.1	2.7	2.7	↑	→
<i>Worst Site</i>	6.5	4.9	6.6	↓	↓
100% RAIM Availability (HAL=185m)					
<i>NPA Service Area (NSA)</i>	-	74.74%	40.74%	-	↓
<i>World</i>	-	67.43%	57.60%	-	↓
Accuracy Parameters					
RMS Single Frequency User Range Error					
<i>Constellation Median</i>	1.95	2.25	2.21	↓	↑
<i>Worst Satellite</i>	2.57	3.38	3.52	↓	↓
95% Horizontal Error					
<i>Area Median</i>	2.71	2.93	2.70	↑	↑
<i>Worst Site</i>	10.10	9.28	8.34	↑	↑
<i>Availability (% <4.5m (historical 3-sigma))</i>	98.74%	99.80%	99.90%	↑	↑
95% Vertical Error					
<i>Area Median</i>	5.03	5.40	6.01	↓	↓
<i>Worst Site</i>	10.39	10.87	9.09	↑	↑
<i>Availability (% < 9m (historical 3-sigma))</i>	99.53%	99.88%	99.64%	↑	↓

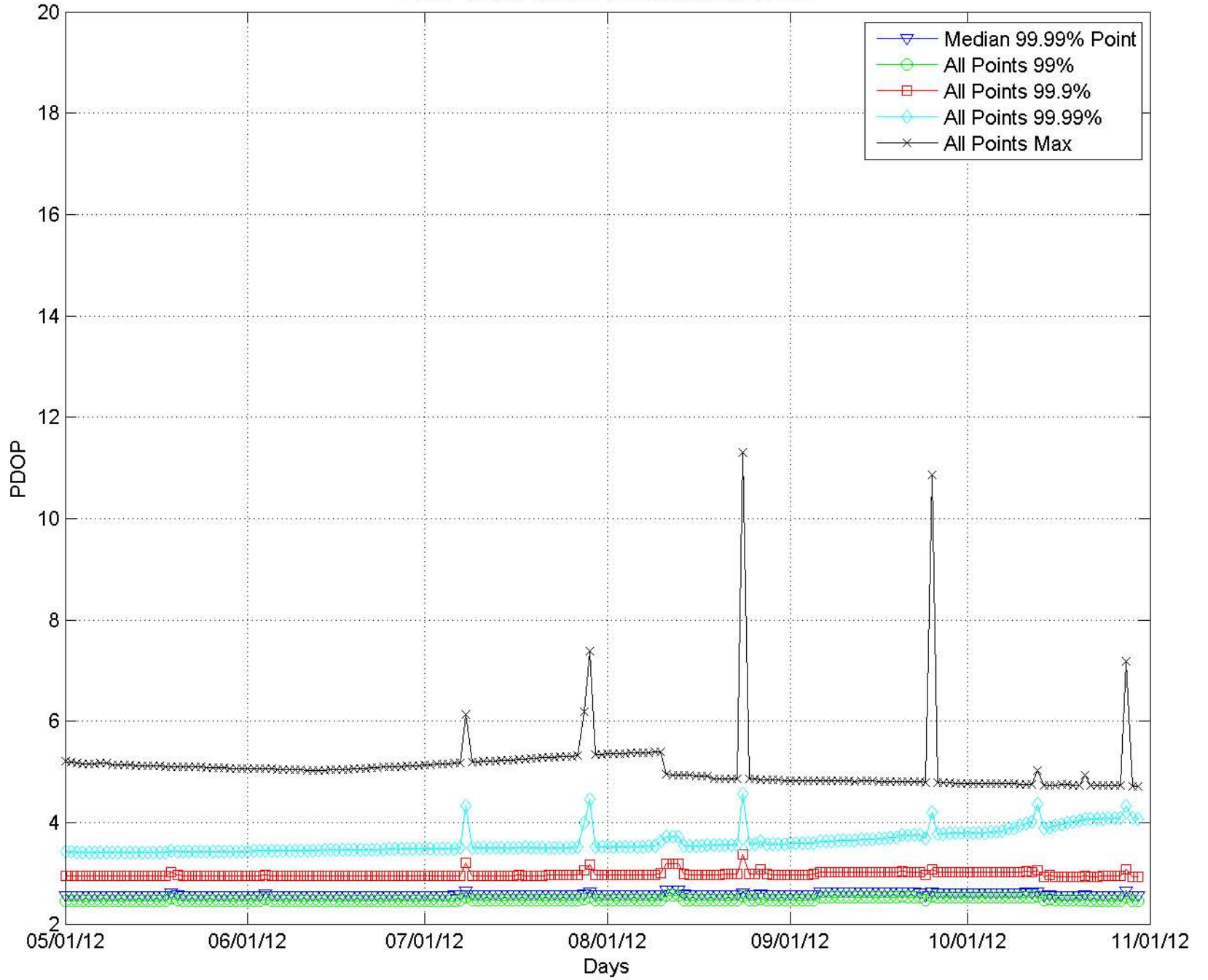
Key: ↑ improving ↓ worsening → no significant change

Long Term is current month vs. prior 24 months; Short Term is current month vs. prior month

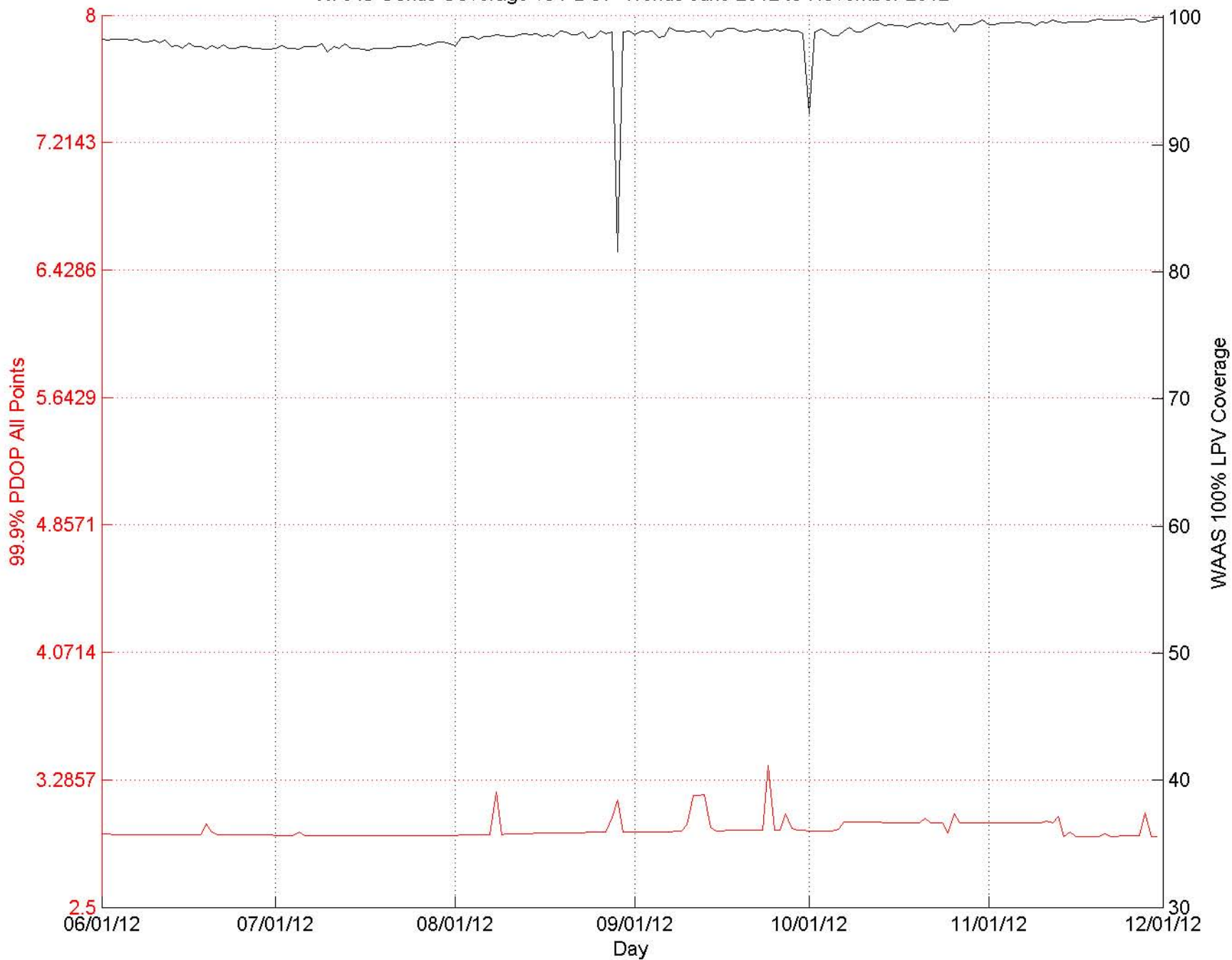
GPS World PDOP 99.99% Index November 2012



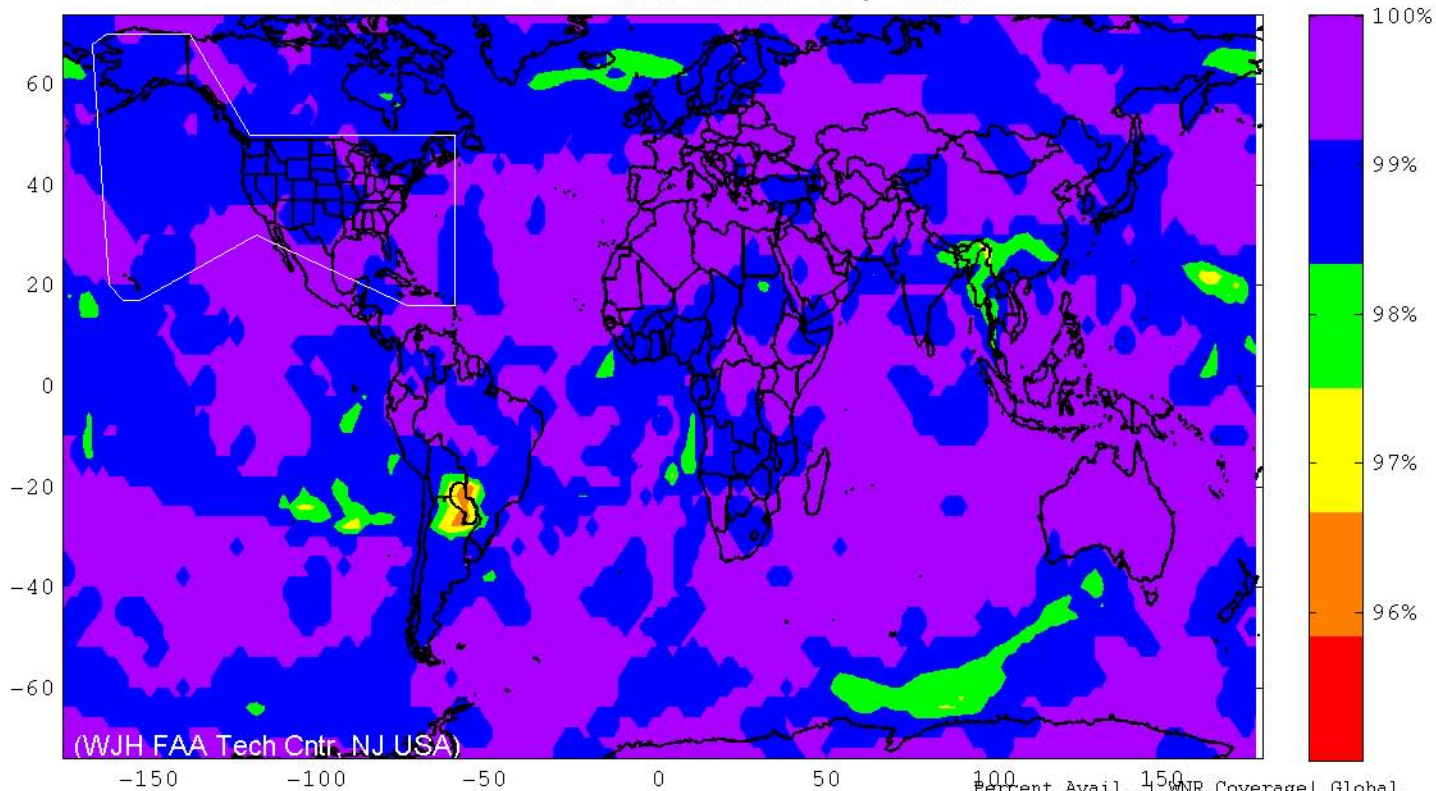
PDOP Trends June 2012 thru November 2012



WAAS Conus Coverage vs PDOP Trends June 2012 to November 2012



SPS RAIM RNP 0.1 (HAL = 185m) Availability
 FD Only, SA Off, without Baro-Aiding
 November 1 - November 30, 2012

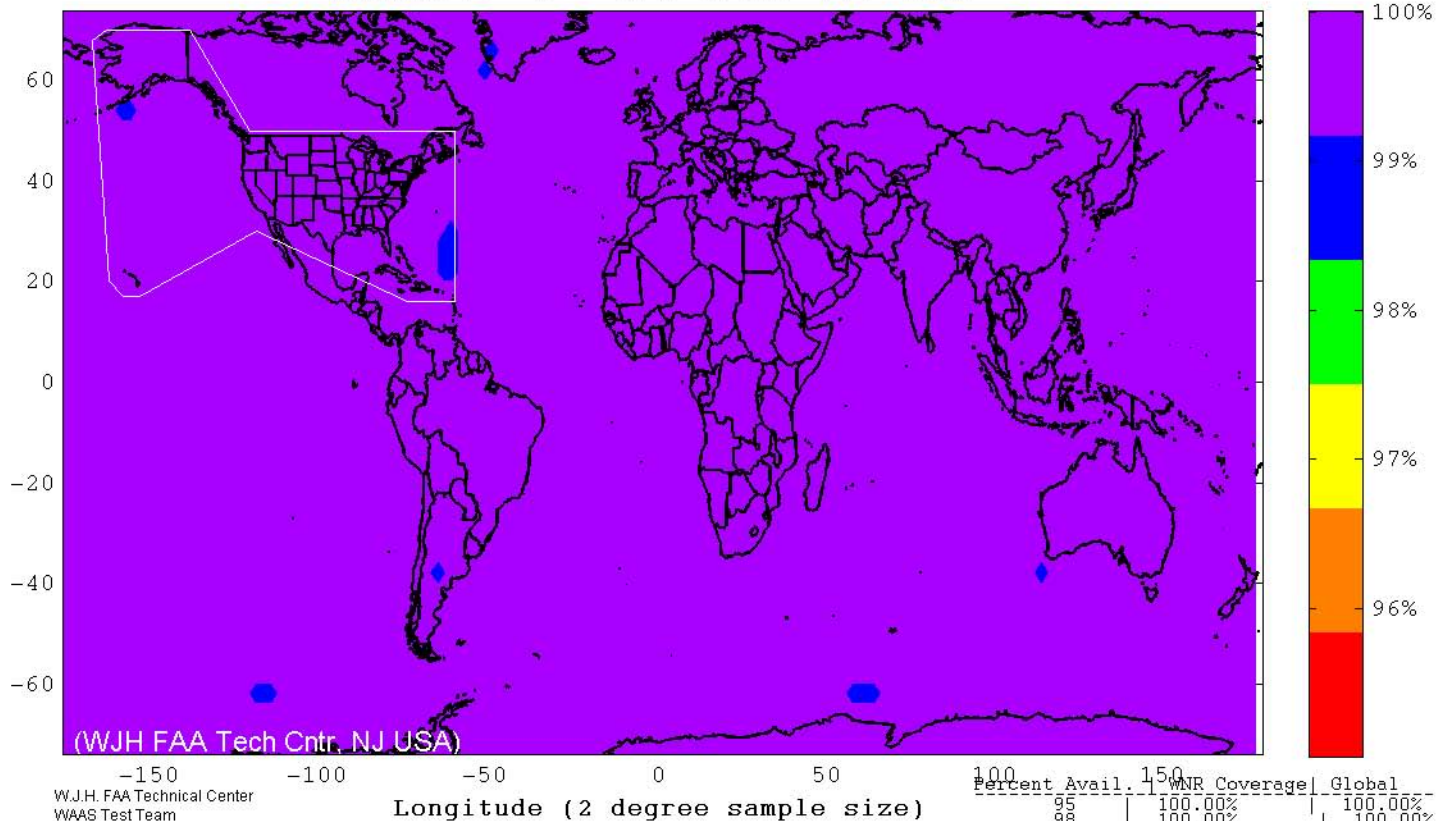


W.J.H. FAA Technical Center
 WAAS Test Team
 12/11/12

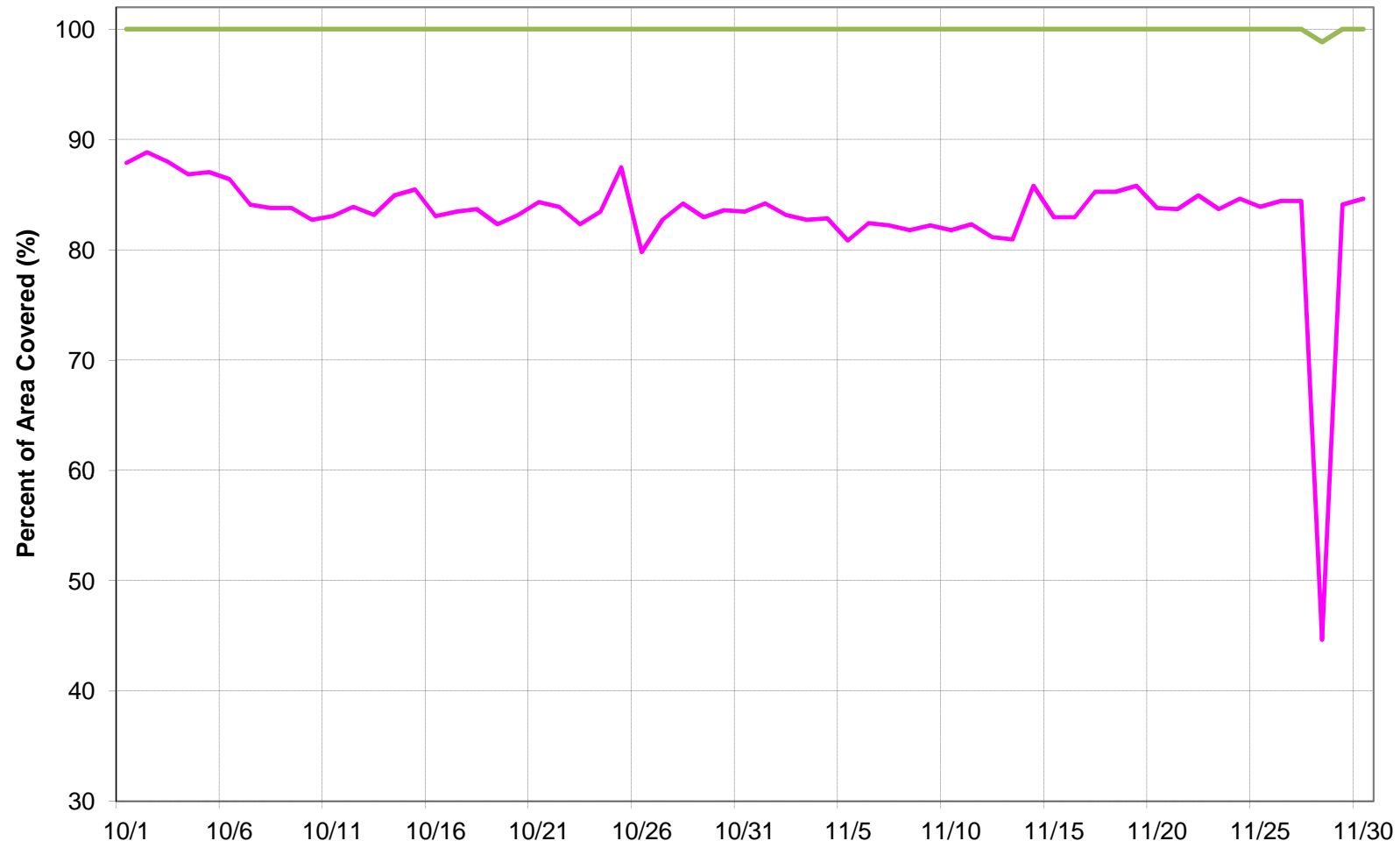
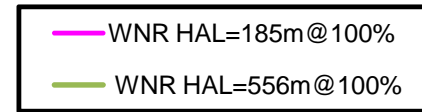
Longitude (2 degree sample size)

Percent Avail.	WNR Coverage	Global
95	100.00%	100.00%
98	100.00%	99.69%
99	100.00%	96.96%
100	40.74%	57.60%

SPS RAIM RNP 0.3 (HAL = 556m) Availability
 FD Only, SA Off, without Baro-Aiding
 November 1 - November 30, 2012



Daily SPS RAIM Trends FD Only, SA Off, without Baro-Aiding
WAAS NPA Region, October 2012



Daily SPS RAIM Trends FD Only, SA Off, without Baro-Aiding
World Service Area, October 2012

