

SPACING CHART

Measurements based on 4 inch upper case letter height

Character	Left (in)	Width (in)	Right (in)
A	0.28	2.28	0.28
B	0.52	1.88	0.36
C	0.40	1.96	0.24
D	0.52	1.96	0.40
E	0.52	1.44	0.36
F	0.52	1.40	0.32
G	0.40	2.08	0.40
H	0.52	1.88	0.52
I	0.52	0.52	0.52
J	0.24	1.28	0.52
K	0.52	1.92	0.24
L	0.52	1.36	0.32
M	0.52	2.24	0.52
N	0.52	2.04	0.52
O	0.40	2.32	0.40
P	0.52	1.80	0.32
Q	0.40	2.32	0.40
R	0.52	1.84	0.40
S	0.28	1.80	0.36
T	0.20	1.68	0.20
U	0.52	1.92	0.52
V	0.28	2.12	0.28
W	0.32	3.20	0.32
X	0.20	2.08	0.20
Y	0.20	2.08	0.20
Z	0.28	1.72	0.28
a	0.36	1.88	0.40
b	0.52	1.84	0.40
c	0.40	1.68	0.28
d	0.40	1.84	0.52
e	0.40	1.84	0.40
f	0.28	1.24	0.24
g	0.40	1.84	0.52
h	0.52	1.76	0.52
i	0.44	0.64	0.44
j	0.00	1.08	0.44
k	0.52	1.72	0.28
l	0.52	0.80	0.32
m	0.52	2.92	0.52
n	0.52	1.76	0.52

CLEARVIEW 1-W

For positive contrast applications
(light type on dark background)

Character	Left (in)	Width (in)	Right (in)
o	0.40	1.92	0.40
p	0.52	1.84	0.40
q	0.40	2.00	0.36
r	0.52	1.16	0.28
s	0.28	1.64	0.32
t	0.24	1.24	0.32
u	0.52	1.76	0.52
v	0.28	1.88	0.28
w	0.32	3.08	0.32
x	0.24	1.88	0.24
y	0.28	1.88	0.28
z	0.32	1.40	0.32
1	0.16	1.16	0.52
2	0.20	1.68	0.32
3	0.20	1.68	0.40
4	0.28	1.96	0.32
5	0.28	1.64	0.36
6	0.40	1.84	0.36
7	0.24	1.68	0.24
8	0.40	1.92	0.40
9	0.36	1.84	0.40
0	0.40	2.04	0.40
&	0.48	2.16	0.28
!	0.44	0.64	0.44
"	0.40	1.44	0.40
#	0.40	2.24	0.40
\$	0.36	1.68	0.36
¢	0.40	1.60	0.28
/	0.24	1.72	0.24
*	0.32	1.44	0.32
.	0.36	0.56	0.36
,	0.36	0.68	0.36
:	0.36	0.68	0.36
(0.32	1.00	0.48
)	0.48	2.68	0.32
-	0.48	1.48	0.48
@	0.52	2.68	0.52
=	0.32	1.48	0.32
+	0.32	1.88	0.32
?	0.40	1.52	0.40

SPACING CHART

Measurements based on 4 inch upper case letter height

Character	Left (in)	Width (in)	Right (in)
A	0.28	2.76	0.28
B	0.56	2.28	0.40
C	0.44	2.44	0.28
D	0.56	2.40	0.44
E	0.56	1.80	0.44
F	0.56	1.72	0.40
G	0.44	2.56	0.44
H	0.56	2.32	0.56
I	0.56	0.60	0.56
J	0.24	1.60	0.56
K	0.56	2.36	0.24
L	0.56	1.64	0.28
M	0.56	2.80	0.56
N	0.56	2.52	0.56
O	0.44	2.84	0.44
P	0.56	2.20	0.36
Q	0.44	2.84	0.44
R	0.56	2.24	0.44
S	0.24	2.20	0.32
T	0.28	2.08	0.28
U	0.56	2.36	0.56
V	0.28	2.60	0.28
W	0.36	4.00	0.36
X	0.24	2.60	0.24
Y	0.20	2.56	0.20
Z	0.32	2.00	0.32
a	0.40	2.32	0.44
b	0.56	2.24	0.44
c	0.44	2.04	0.20
d	0.44	2.24	0.56
e	0.44	2.32	0.44
f	0.28	1.44	0.28
g	0.44	2.28	0.56
h	0.56	2.16	0.56
i	0.48	0.76	0.48
j	-0.04	1.32	0.48
k	0.56	2.12	0.24
l	0.56	0.96	0.32
m	0.56	3.64	0.56
n	0.56	2.16	0.56

CLEARVIEW 2-W

For positive contrast applications
(light type on dark background)

Character	Left (in)	Width (in)	Right (in)
o	0.44	2.40	0.44
p	0.56	2.24	0.44
q	0.44	2.48	0.36
r	0.56	1.40	0.28
s	0.28	1.96	0.32
t	0.28	1.44	0.32
u	0.56	2.16	0.56
v	0.24	2.32	0.24
w	0.32	3.80	0.32
x	0.16	2.32	0.16
y	0.24	2.32	0.24
z	0.28	1.72	0.28
1	0.24	1.36	0.60
2	0.32	2.08	0.48
3	0.28	2.04	0.44
4	0.28	2.44	0.36
5	0.36	2.04	0.44
6	0.44	2.28	0.40
7	0.32	2.04	0.36
8	0.44	2.36	0.44
9	0.40	2.28	0.44
0	0.48	2.52	0.48
&	0.44	2.64	0.24
!	0.56	0.76	0.56
"	0.48	1.72	0.48
#	0.48	2.72	0.48
\$	0.44	2.04	0.44
¢	0.44	1.96	0.32
/	0.28	2.08	0.28
*	0.44	1.76	0.44
.	0.48	0.68	0.48
,	0.48	0.76	0.44
:	0.48	0.68	0.48
(0.40	0.84	0.52
)	0.52	0.84	0.40
-	0.52	1.08	0.52
@	0.44	3.40	0.44
=	0.40	2.28	0.40
+	0.40	2.28	0.40
?	0.36	1.88	0.40

USE OF THE ALPHABET LETTER FORMS HEREIN ON HIGHWAY SIGNS REQUIRES INTERIM APPROVAL BY FHWA.

SPACING CHART

Measurements based on 4 inch upper case letter height

Character	Left (in)	Width (in)	Right (in)
A	0.24	3.32	0.24
B	0.60	2.72	0.36
C	0.44	2.88	0.24
D	0.60	2.84	0.44
E	0.60	2.20	0.36
F	0.60	2.12	0.32
G	0.44	3.04	0.44
H	0.60	2.72	0.60
I	0.60	0.68	0.60
J	0.24	1.88	0.60
K	0.60	2.72	0.20
L	0.60	2.04	0.28
M	0.60	3.28	0.60
N	0.60	2.92	0.60
O	0.44	3.32	0.44
P	0.60	2.60	0.44
Q	0.44	3.32	0.44
R	0.60	2.64	0.40
S	0.32	2.56	0.36
T	0.24	2.52	0.24
U	0.60	2.76	0.60
V	0.28	3.04	0.28
W	0.36	4.68	0.36
X	0.24	3.04	0.24
Y	0.20	3.04	0.20
Z	0.36	2.48	0.36
a	0.44	2.68	0.44
b	0.60	2.60	0.44
c	0.44	2.40	0.28
d	0.44	2.60	0.60
e	0.44	2.64	0.44
f	0.36	1.68	0.32
g	0.44	2.64	0.60
h	0.60	2.48	0.60
i	0.52	0.84	0.52
j	-0.16	1.52	0.52
k	0.60	2.48	0.24
l	0.60	1.12	0.32
m	0.60	4.12	0.60
n	0.60	2.48	0.60

CLEARVIEW 3-W

For positive contrast applications
(light type on dark background)

Character	Left (in)	Width (in)	Right (in)
o	0.44	2.80	0.44
p	0.60	2.60	0.44
q	0.44	2.84	0.36
r	0.60	1.64	0.32
s	0.32	2.32	0.36
t	0.24	1.72	0.40
u	0.60	2.44	0.60
v	0.24	2.72	0.24
w	0.32	4.24	0.32
x	0.24	2.72	0.24
y	0.24	2.76	0.24
z	0.36	2.12	0.36
1	0.20	1.60	0.60
2	0.28	2.44	0.44
3	0.24	2.44	0.44
4	0.28	2.84	0.32
5	0.36	2.44	0.44
6	0.48	2.60	0.40
7	0.28	2.48	0.32
8	0.44	2.68	0.44
9	0.40	2.64	0.48
0	0.44	2.92	0.44
&	0.44	3.08	0.24
!	0.60	0.88	0.60
"	0.48	1.92	0.48
#	0.44	3.12	0.44
\$	0.40	2.40	0.40
¢	0.44	2.32	0.36
/	0.24	2.52	0.24
*	0.40	1.80	0.40
.	0.52	0.60	0.52
,	0.40	0.92	0.40
:	0.40	0.84	0.40
(0.44	0.96	0.48
)	0.48	0.96	0.44
-	0.56	1.36	0.56
@	0.44	3.72	0.44
=	0.40	2.16	0.40
+	0.40	2.48	0.40
?	0.36	2.24	0.48

USE OF THE ALPHABET LETTER FORMS HEREIN ON HIGHWAY SIGNS REQUIRES INTERIM APPROVAL BY FHWA.

SPACING CHART

Measurements based on 4 inch upper case letter height

Character	Left (in)	Width (in)	Right (in)
A	0.28	3.48	0.28
B	0.72	2.84	0.48
C	0.56	3.04	0.36
D	0.72	3.00	0.56
E	0.72	2.36	0.52
F	0.72	2.24	0.52
G	0.56	3.20	0.56
H	0.72	2.88	0.72
I	0.72	0.72	0.72
J	0.32	1.96	0.72
K	0.72	2.92	0.28
L	0.72	2.16	0.36
M	0.72	3.44	0.72
N	0.72	3.08	0.72
O	0.56	3.48	0.56
P	0.72	2.72	0.52
Q	0.56	3.48	0.56
R	0.72	2.80	0.52
S	0.44	2.68	0.52
T	0.36	2.68	0.36
U	0.72	2.92	0.72
V	0.32	3.16	0.32
W	0.48	4.92	0.48
X	0.32	3.20	0.32
Y	0.28	3.24	0.28
Z	0.40	2.64	0.40
a	0.56	2.80	0.52
b	0.72	2.72	0.56
c	0.56	2.52	0.36
d	0.56	2.72	0.72
e	0.56	2.76	0.56
f	0.36	1.76	0.32
g	0.56	2.72	0.72
h	0.72	2.60	0.72
i	0.64	0.88	0.64
j	-0.12	1.64	0.64
k	0.72	2.64	0.28
l	0.72	1.20	0.40
m	0.72	4.28	0.72
n	0.72	2.60	0.72

CLEARVIEW 4-W

For positive contrast applications
(light type on dark background)

Character	Left (in)	Width (in)	Right (in)
o	0.56	2.92	0.56
p	0.72	2.72	0.56
q	0.56	3.00	0.48
r	0.72	1.72	0.36
s	0.44	2.40	0.48
t	0.36	1.84	0.48
u	0.72	2.56	0.72
v	0.32	2.84	0.32
w	0.40	4.40	0.40
x	0.28	2.88	0.28
y	0.32	2.88	0.32
z	0.40	2.28	0.40
1	0.28	1.68	0.72
2	0.36	2.56	0.52
3	0.32	2.60	0.52
4	0.32	2.96	0.36
5	0.44	2.56	0.52
6	0.52	2.72	0.48
7	0.36	2.60	0.36
8	0.56	2.80	0.56
9	0.48	2.72	0.52
0	0.56	3.08	0.56
&	0.52	3.20	0.32
!	0.64	0.92	0.64
"	0.56	2.04	0.56
#	0.52	3.24	0.52
\$	0.44	2.52	0.44
¢	0.56	2.44	0.40
/	0.36	2.68	0.36
*	0.48	1.88	0.48
.	0.52	0.88	0.52
,	0.48	1.00	0.44
:	0.52	0.88	0.52
(0.48	1.04	0.56
)	0.56	1.04	0.48
-	0.68	1.40	0.68
@	0.56	3.80	0.56
=	0.60	2.28	0.60
+	0.44	2.56	0.44
?	0.40	2.36	0.56

USE OF THE ALPHABET LETTER FORMS HEREIN ON HIGHWAY SIGNS REQUIRES INTERIM APPROVAL BY FHWA.

SPACING CHART

Measurements based on 4 inch upper case letter height

Character	Left (in)	Width (in)	Right (in)
A	0.36	3.76	0.36
B	0.80	3.04	0.60
C	0.64	3.28	0.44
D	0.80	3.24	0.64
E	0.80	2.56	0.56
F	0.80	2.44	0.52
G	0.64	3.48	0.64
H	0.80	3.08	0.80
I	0.80	0.80	0.80
J	0.32	2.24	0.80
K	0.80	3.12	0.36
L	0.80	2.36	0.48
M	0.80	3.68	0.80
N	0.80	3.32	0.80
O	0.64	3.72	0.64
P	0.80	2.92	0.48
Q	0.64	3.72	0.64
R	0.80	3.00	0.60
S	0.48	2.88	0.52
T	0.40	2.88	0.40
U	0.80	3.12	0.80
V	0.36	3.40	0.36
W	0.40	5.32	0.40
X	0.32	3.44	0.32
Y	0.28	3.52	0.28
Z	0.52	2.88	0.52
a	0.52	2.96	0.52
b	0.76	2.88	0.60
c	0.60	2.72	0.40
d	0.60	2.92	0.76
e	0.60	2.96	0.60
f	0.44	1.92	0.40
g	0.60	2.92	0.76
h	0.76	2.76	0.76
i	0.68	0.92	0.68
j	-0.12	1.76	0.68
k	0.76	2.84	0.28
l	0.76	1.28	0.44
m	0.76	4.52	0.76
n	0.76	2.76	0.76

CLEARVIEW 5-W

For positive contrast applications
(light type on dark background)

Character	Left (in)	Width (in)	Right (in)
o	0.60	3.08	0.60
p	0.76	2.92	0.60
q	0.60	3.20	0.48
r	0.76	1.84	0.40
s	0.44	2.56	0.52
t	0.36	1.96	0.44
u	0.76	2.72	0.76
v	0.28	3.04	0.28
w	0.32	4.64	0.32
x	0.24	3.08	0.24
y	0.28	3.12	0.28
z	0.48	2.44	0.48
1	0.40	1.80	0.80
2	0.48	2.76	0.64
3	0.44	2.80	0.64
4	0.48	3.16	0.52
5	0.60	2.76	0.64
6	0.64	2.92	0.60
7	0.40	2.84	0.40
8	0.64	2.92	0.64
9	0.60	2.92	0.64
0	0.68	3.28	0.68
&	0.64	3.44	0.40
!	0.72	1.00	0.72
"	0.56	2.16	0.56
#	0.56	3.44	0.56
\$	0.48	2.72	0.48
¢	0.60	2.60	0.40
/	0.44	2.88	0.44
*	0.60	1.92	0.60
.	0.56	1.00	0.56
,	0.52	1.08	0.52
:	0.56	1.00	0.56
(0.60	1.08	0.60
)	0.60	1.08	0.60
-	0.80	1.56	0.80
@	0.64	4.04	0.64
=	0.72	2.40	0.72
+	0.60	2.68	0.60
?	0.56	2.56	0.56

USE OF THE ALPHABET LETTER FORMS HEREIN ON HIGHWAY SIGNS REQUIRES INTERIM APPROVAL BY FHWA.

SPACING CHART

Measurements based on 4 inch upper case letter height

Character	Left (in)	Width (in)	Right (in)
A	0.24	3.76	0.24
B	0.68	3.04	0.48
C	0.52	3.28	0.32
D	0.68	3.24	0.52
E	0.68	2.56	0.44
F	0.68	2.44	0.40
G	0.52	3.48	0.52
H	0.80	3.08	0.80
I	0.68	0.80	0.68
J	0.20	2.24	0.68
K	0.68	3.12	0.24
L	0.68	2.36	0.36
M	0.68	3.68	0.68
N	0.68	3.32	0.68
O	0.52	3.72	0.52
P	0.68	2.92	0.36
Q	0.52	3.72	0.52
R	0.68	3.00	0.48
S	0.36	2.88	0.40
T	0.28	2.88	0.28
U	0.68	3.12	0.68
V	0.24	3.40	0.24
W	0.28	5.32	0.28
X	0.20	3.44	0.20
Y	0.16	3.52	0.16
Z	0.40	2.88	0.40
a	0.40	2.96	0.40
b	0.64	2.88	0.48
c	0.48	2.72	0.28
d	0.48	2.92	0.64
e	0.48	2.96	0.48
f	0.32	1.92	0.28
g	0.48	2.92	0.64
h	0.64	2.76	0.64
i	0.56	0.92	0.56
j	-0.24	1.76	0.56
k	0.64	2.84	0.16
l	0.64	1.28	0.32
m	0.64	4.52	0.64
n	0.64	2.76	0.64

CLEARVIEW 5-W(R)*

For positive contrast applications
(light type on dark background)

Character	Left (in)	Width (in)	Right (in)
o	0.48	3.08	0.48
p	0.64	2.92	0.48
q	0.48	3.20	0.36
r	0.64	1.84	0.28
s	0.28	2.56	0.40
t	0.24	1.96	0.36
u	0.64	2.72	0.64
v	0.16	3.04	0.16
w	0.20	4.64	0.20
x	0.12	3.08	0.12
y	0.16	3.12	0.16
z	0.36	2.44	0.36
1	0.28	1.80	0.68
2	0.36	2.76	0.52
3	0.32	2.80	0.52
4	0.36	3.16	0.40
5	0.48	2.76	0.52
6	0.52	2.92	0.48
7	0.28	2.84	0.28
8	0.52	2.92	0.52
9	0.48	2.92	0.52
0	0.56	3.28	0.56
&	0.52	3.44	0.28
!	0.60	1.00	0.60
"	0.44	2.16	0.44
#	0.44	3.44	0.44
\$	0.36	2.72	0.36
¢	0.48	2.60	0.28
/	0.32	2.88	0.32
*	0.48	1.92	0.48
.	0.44	1.00	0.44
,	0.40	1.08	0.40
:	0.44	1.00	0.44
(0.48	1.08	0.48
)	0.48	1.08	0.48
-	0.60	1.56	0.60
@	0.52	4.04	0.52
=	0.60	2.40	0.60
+	0.48	2.68	0.48
?	0.44	2.56	0.44

* Use restricted to isolated signs only and shall not be specified as a standard.

USE OF THE ALPHABET LETTER FORMS HEREIN ON HIGHWAY SIGNS REQUIRES INTERIM APPROVAL BY FHWA.

SPACING CHART

Measurements based on 4 inch upper case letter height

Character	Left (in)	Width (in)	Right (in)
A	0.44	3.96	0.44
B	0.88	3.20	0.60
C	0.72	3.44	0.56
D	0.88	3.40	0.72
E	0.88	2.72	0.60
F	0.88	2.60	0.56
G	0.72	3.64	0.72
H	0.88	3.24	0.88
I	0.88	0.80	0.88
J	0.52	2.24	0.88
K	0.88	3.28	0.44
L	0.88	2.52	0.60
M	0.88	3.84	0.88
N	0.88	3.48	0.88
O	0.72	3.92	0.72
P	0.88	3.04	0.64
Q	0.72	3.96	0.72
R	0.88	3.16	0.56
S	0.52	3.04	0.60
T	0.48	3.08	0.48
U	0.88	3.28	0.88
V	0.44	3.52	0.44
W	0.52	5.64	0.52
X	0.40	3.64	0.40
Y	0.32	3.72	0.32
Z	0.60	3.04	0.60
a	0.68	3.12	0.60
b	0.88	3.04	0.72
c	0.72	2.88	0.52
d	0.72	3.04	0.88
e	0.72	3.08	0.72
f	0.48	2.04	0.44
g	0.72	3.04	0.88
h	0.88	2.92	0.88
i	0.80	0.96	0.80
j	-0.08	1.88	0.80
k	0.88	3.00	0.36
l	0.88	1.32	0.52
m	0.88	4.76	0.88
n	0.88	2.92	0.88

CLEARVIEW 6-W

For positive contrast applications
(light type on dark background)

Character	Left (in)	Width (in)	Right (in)
o	0.72	3.24	0.72
p	0.88	3.04	0.72
q	0.72	3.32	0.60
r	0.88	1.92	0.48
s	0.52	2.68	0.60
t	0.48	2.08	0.68
u	0.88	2.84	0.88
v	0.44	3.20	0.44
w	0.52	4.80	0.52
x	0.40	3.24	0.40
y	0.44	3.28	0.44
z	0.56	2.60	0.56
1	0.48	1.88	0.88
2	0.56	2.92	0.64
3	0.56	2.96	0.68
4	0.56	3.32	0.60
5	0.68	2.92	0.68
6	0.72	3.04	0.68
7	0.40	3.00	0.40
8	0.68	3.04	0.68
9	0.68	3.04	0.72
0	0.72	3.40	0.72
&	0.72	3.60	0.40
!	0.80	1.04	0.80
"	0.68	2.24	0.68
#	0.68	3.52	0.68
\$	0.60	2.88	0.60
¢	0.72	2.72	0.48
/	0.52	3.08	0.52
*	0.60	1.96	0.60
.	0.64	1.04	0.64
,	0.56	1.12	0.64
:	0.64	1.04	0.64
(0.72	1.16	0.68
)	0.68	1.16	0.72
-	0.80	1.68	0.80
@	0.72	4.20	0.72
=	0.72	2.56	0.72
+	0.64	2.76	0.64
?	0.56	2.72	0.72

USE OF THE ALPHABET LETTER FORMS HEREIN ON HIGHWAY SIGNS REQUIRES INTERIM APPROVAL BY FHWA.

A B C D E

F G H I J K

L M N O P

Q R S T U

V W X Y Z

a b c d e

CLEARVIEW 1-W

Display characters are based on a 2 inch upper case letter height for positive contrast applications.

f g h i j k

l m n o p

q r s t u v

CLEARVIEW 1-W

Display characters are based on a 2 inch upper case letter height for positive contrast applications.

W X Y Z

1 2 3 4 5 6

7 8 9 0

CLEARVIEW 1-W

Display characters are based on a 2 inch upper case letter height for positive contrast applications.

& ! " # \$ ¢

/ * : () -

@ = + ?

A B C D

E F G H I

J K L M

CLEARVIEW 2-W

Display characters are based on a 2 inch upper case letter height for positive contrast applications.

N O P Q

R S T U

V W X Y

Z a b c

d e f g

h i j k l

m n o p

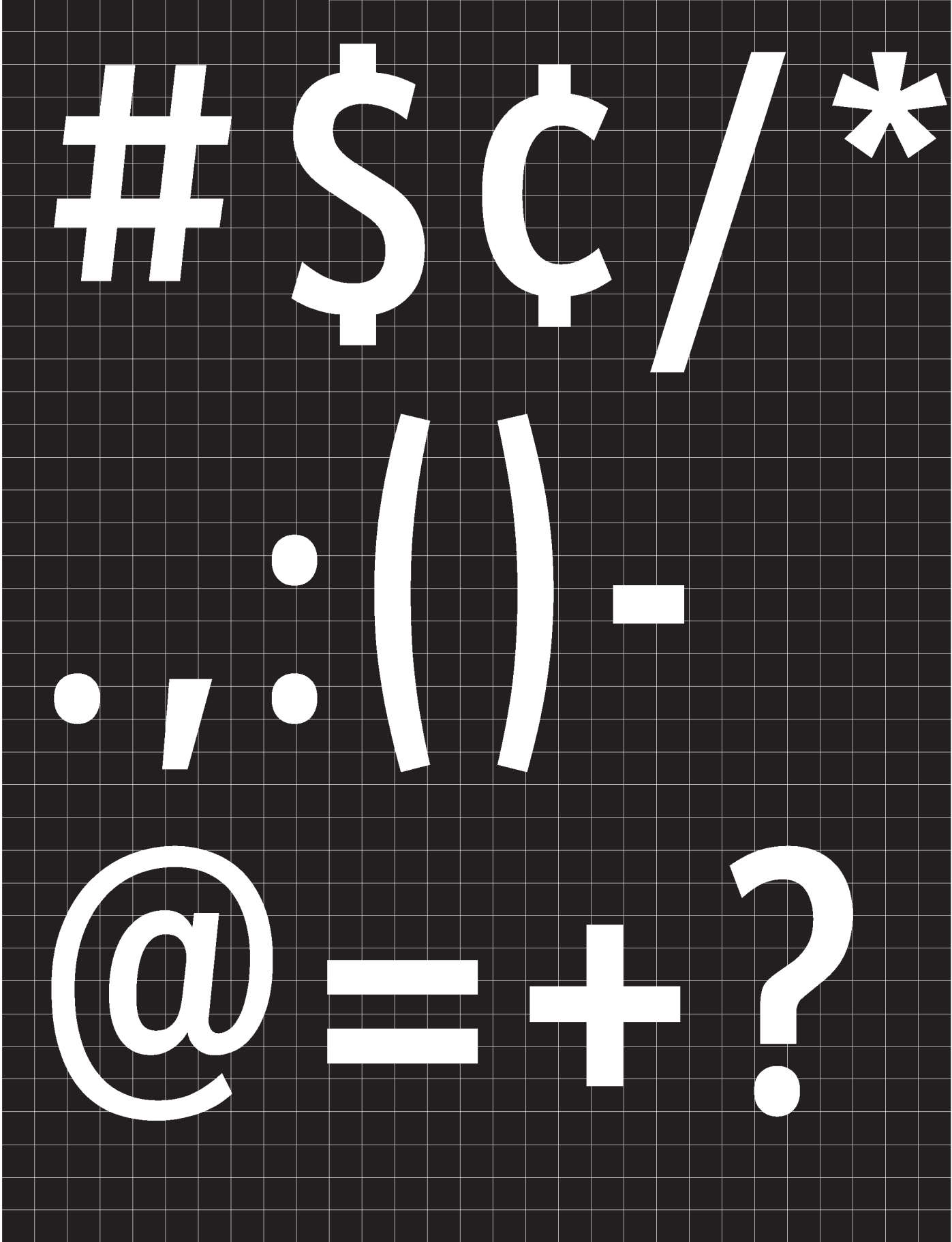
q r s t u

v w x y

1 2 3 4

5 6 7 8

9 0 & ! "



A B C

D E F G

H I J K

L M N

O P Q

R S T U

CLEARVIEW 3-W

Display characters are based on a 2 inch upper case letter height for positive contrast applications.

V W W X

Y Z a b

c d e f

g h i j k

l m n

o p q r

s t u v

w x y z

1 2 3 4

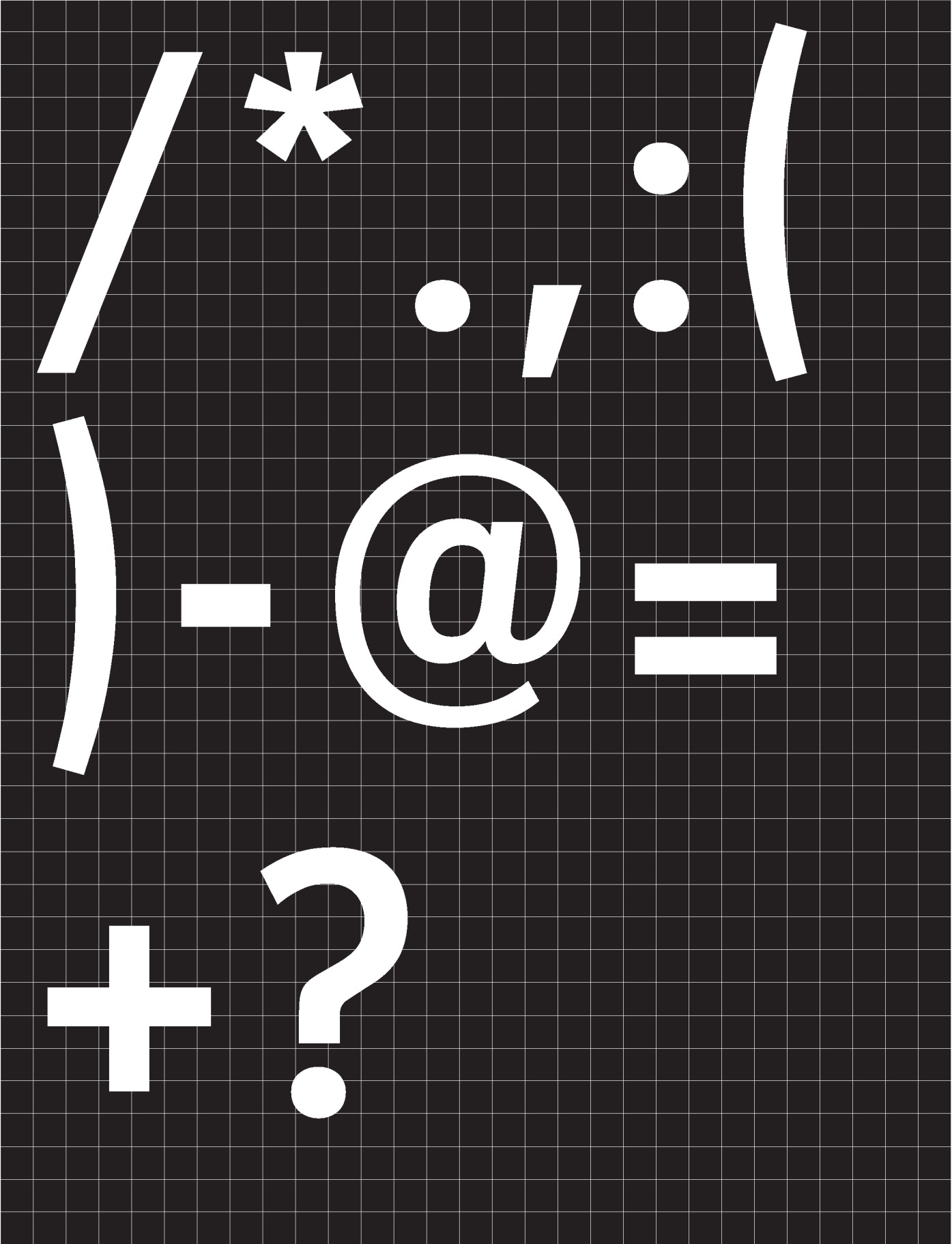
5 6 7 8

9 0 & !

“ # \$ ¢

CLEARVIEW 3-W

Display characters are based on a 2 inch upper case letter height for positive contrast applications.



CLEARVIEW 4-W

Display characters are based on a 2 inch upper case letter height for positive contrast applications.

A B C

D E F

G H I J

K L M

N O P

Q R S

CLEARVIEW 4-W

Display characters are based on a 2 inch upper case letter height for positive contrast applications.

T U V

W X Y

z a b

c d e f

g h i j

k l m

CLEARVIEW 4-W

Display characters are based on a 2 inch upper case letter height for positive contrast applications.

n o p

q r s t

u v w

9 0 & !

"/ # \$ ¢

/ * . / : (

CLEARVIEW 4-W

Display characters are based on a 2 inch upper case letter height for positive contrast applications.

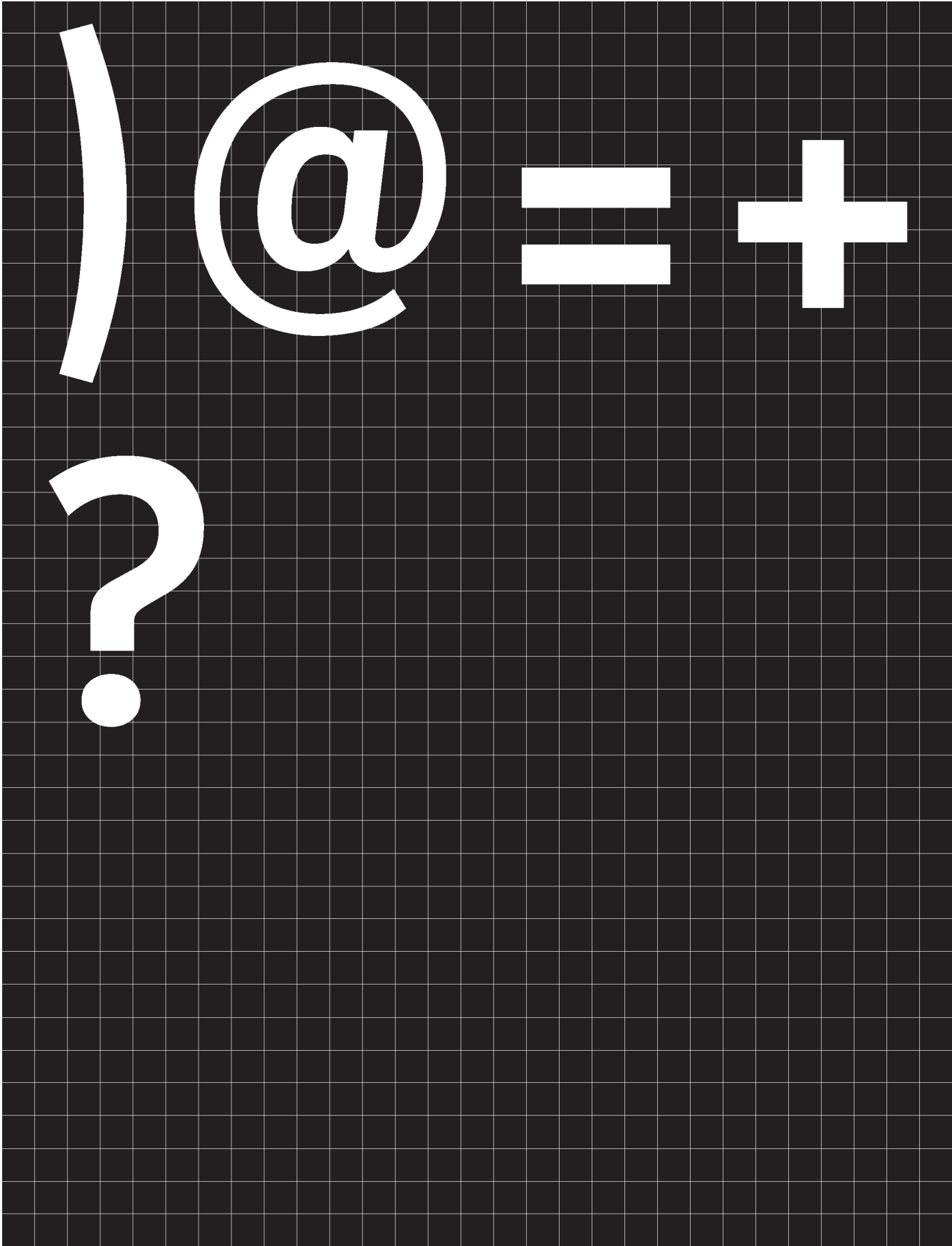
9 0 & !

"/ # \$ ¢

/ * : (

CLEARVIEW 4-W

Display characters are based on a 2 inch upper case letter height for positive contrast applications.



CLEARVIEW 5-W and 5-W(R)

Display characters are based on a 2 inch upper case letter height for positive contrast applications.

A B C

D E F

G H I

CLEARVIEW 5-W and 5-W(R)

Display characters are based on a 2 inch upper case letter height for positive contrast applications.

J K L

M N O

P Q R

CLEARVIEW 5-W and 5-W(R)

Display characters are based on a 2 inch upper case letter height for positive contrast applications.

S T U

V W W X

Y Z a

CLEARVIEW 5-W and 5-W(R)

Display characters are based on a 2 inch upper case letter height for positive contrast applications.

b c d

e f g h

i j k l

m n o

p q r

s t u v

CLEARVIEW 5-W and 5-W(R)

Display characters are based on a 2 inch upper case letter height for positive contrast applications.

W X Y

Z 1 2 3

4 5 6

CLEARVIEW 5-W and 5-W(R)

Display characters are based on a 2 inch upper case letter height for positive contrast applications.

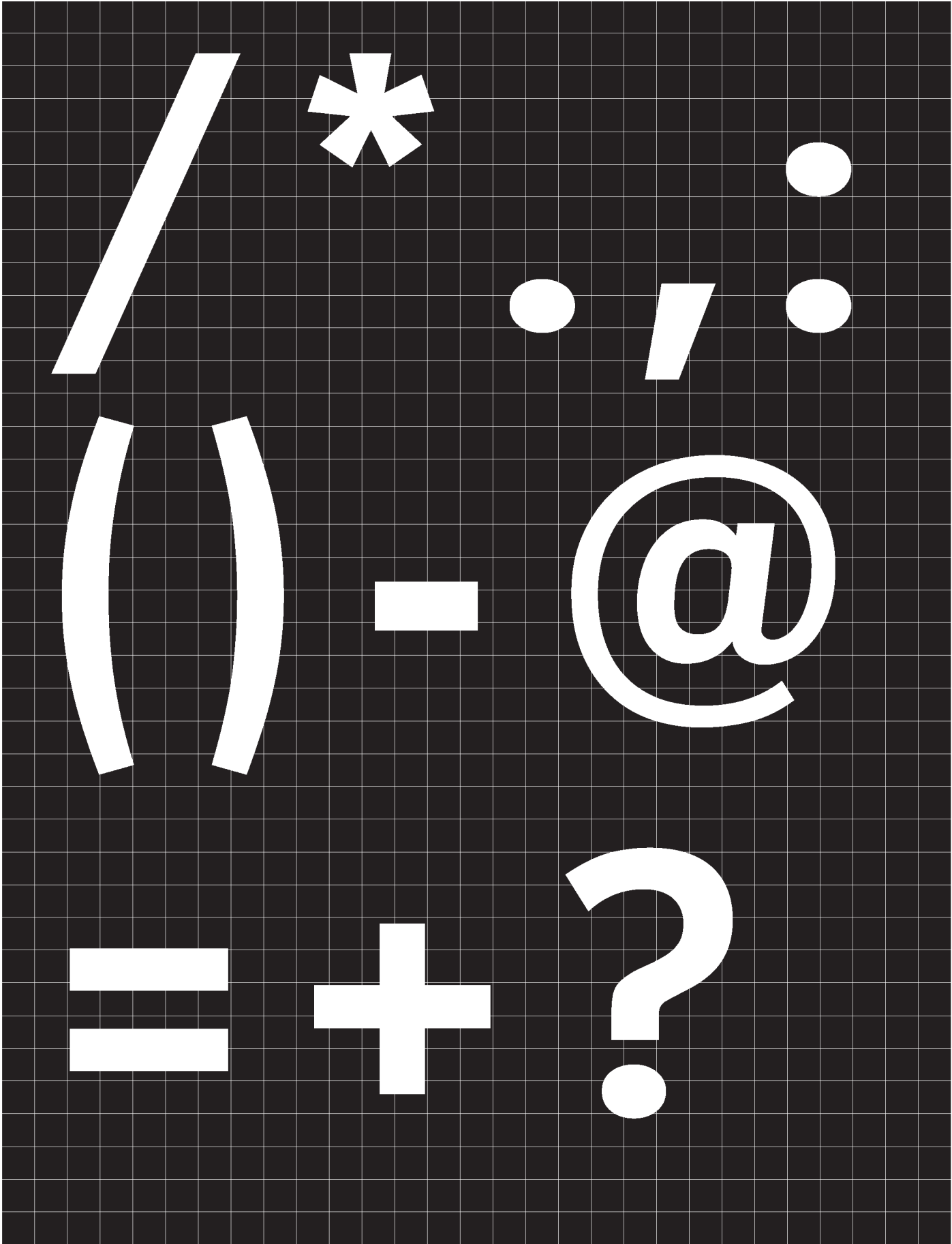
7 8 9

0 & ! "

\$ ¢

CLEARVIEW 5-W and 5-W(R)

Display characters are based on a 2 inch upper case letter height for positive contrast applications.



CLEARVIEW 6-W

Display characters are based on a 2 inch upper case letter height for positive contrast applications.

A B C

D E F

G H I

CLEARVIEW 6-W

Display characters are based on a 2 inch upper case letter height for positive contrast applications.

J K L

M N

O P Q

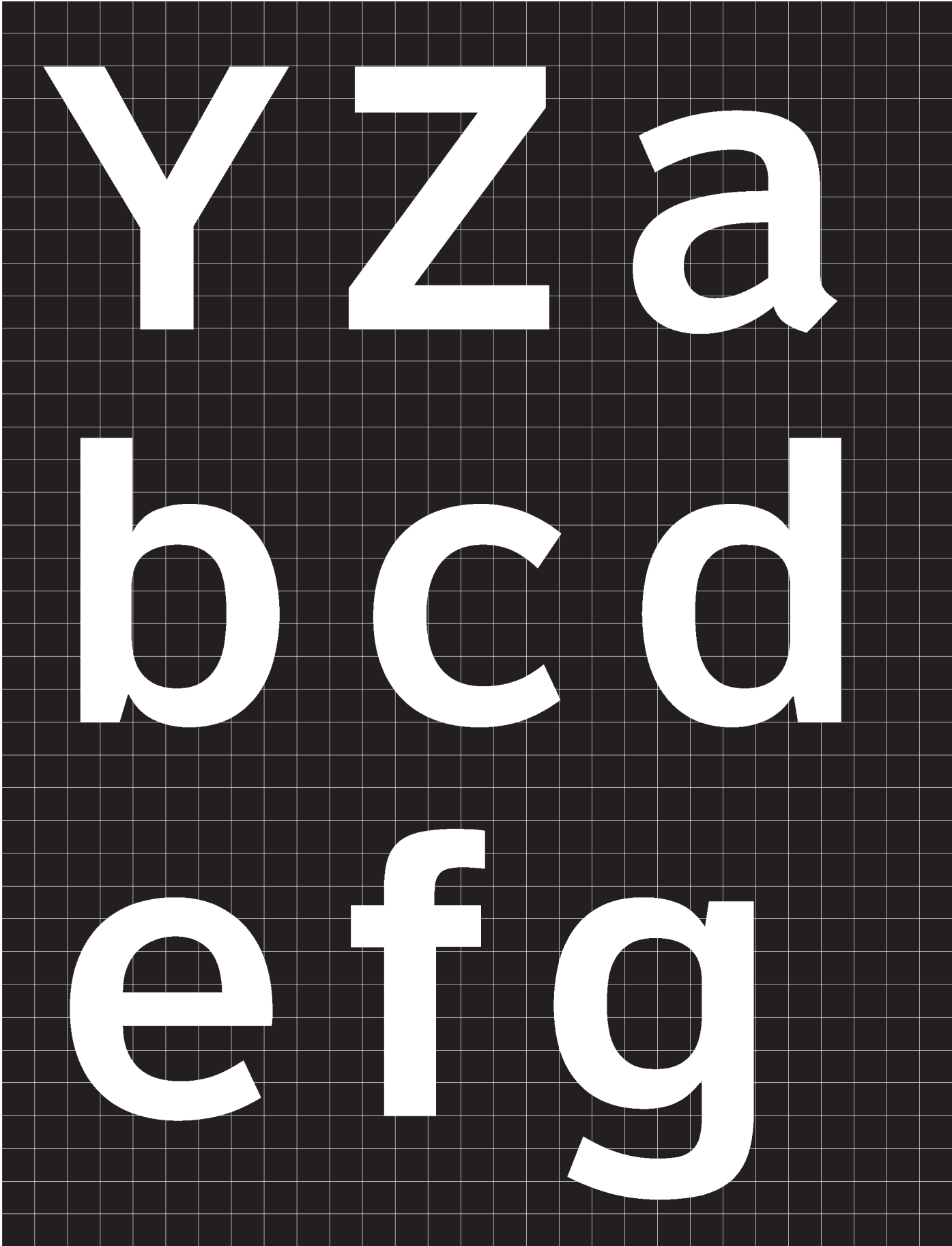
CLEARVIEW 6-W

Display characters are based on a 2 inch upper case letter height for positive contrast applications.

R S T

U V

W X



CLEARVIEW 6-W

Display characters are based on a 2 inch upper case letter height for positive contrast applications.

h i j k

l m n

o p q

r s t

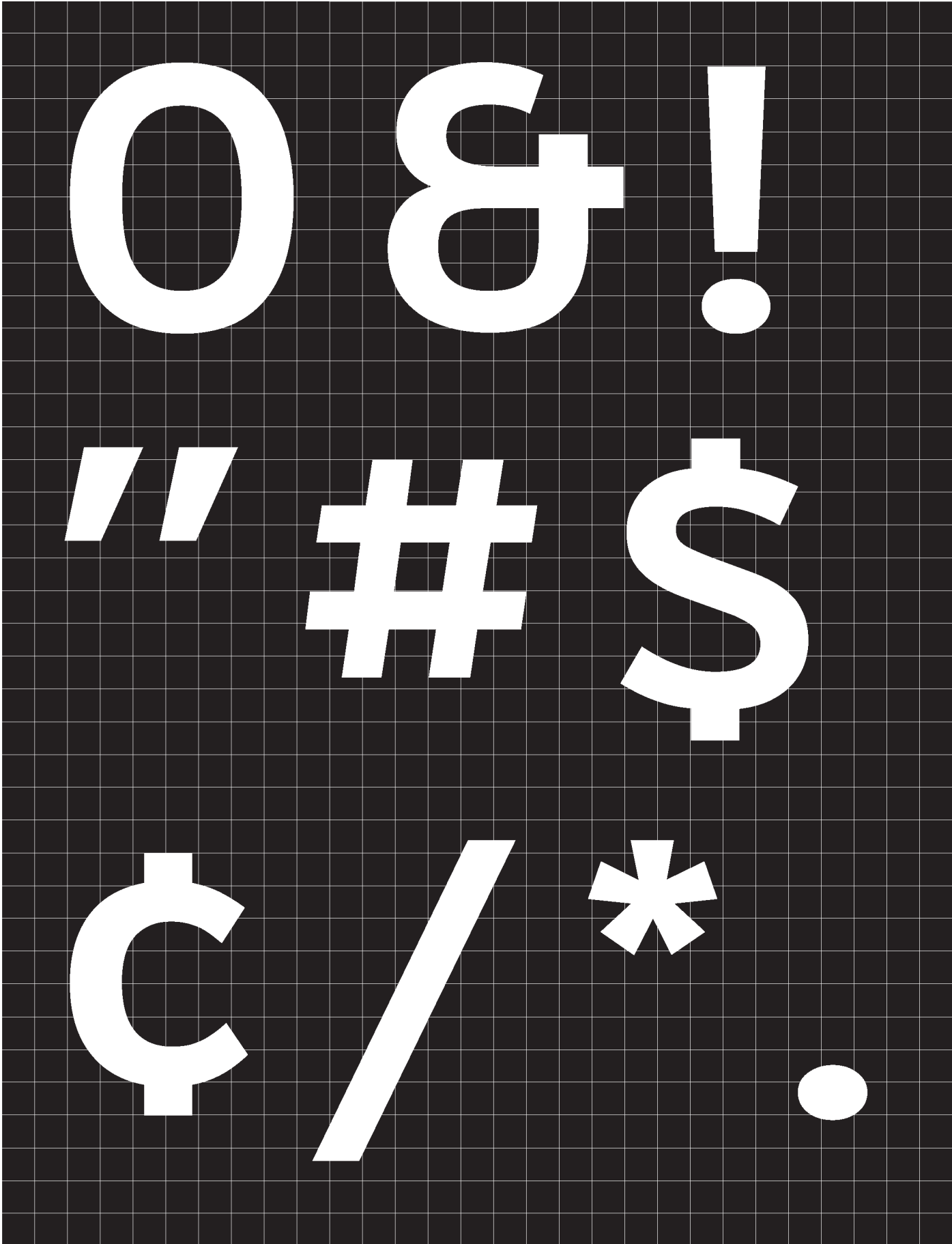
u v w

x y z

1 2 3

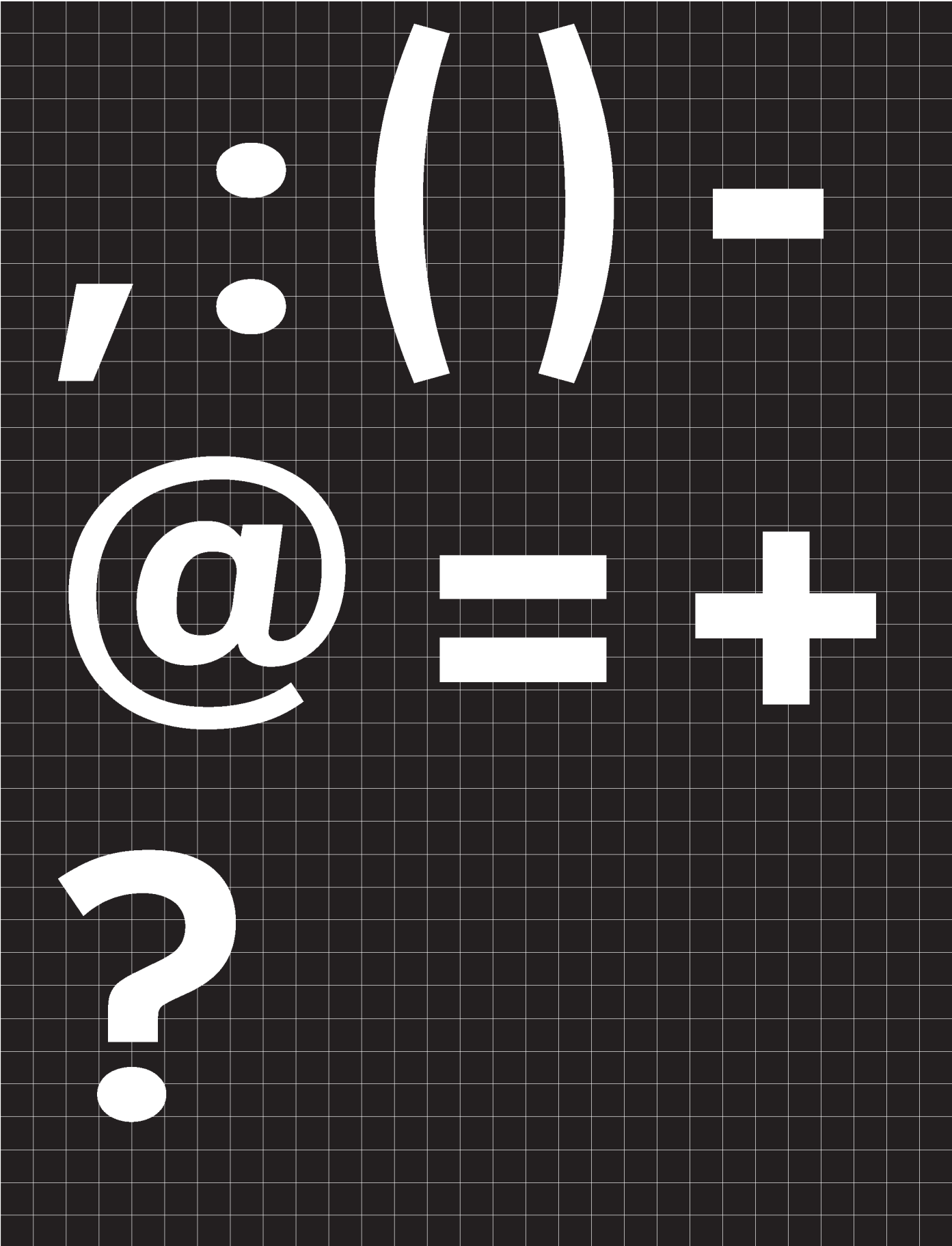
4 5 6

7 8 9



CLEARVIEW 6-W

Display characters are based on a 2 inch upper case letter height for positive contrast applications.



USE OF THE ALPHABET LETTER FORMS HEREIN ON HIGHWAY SIGNS REQUIRES INTERIM APPROVAL BY FHWA.