

CARES : TO SITE

Mobile Atmospheric Chemistry Laboratory

NO,NO₂,NO_y

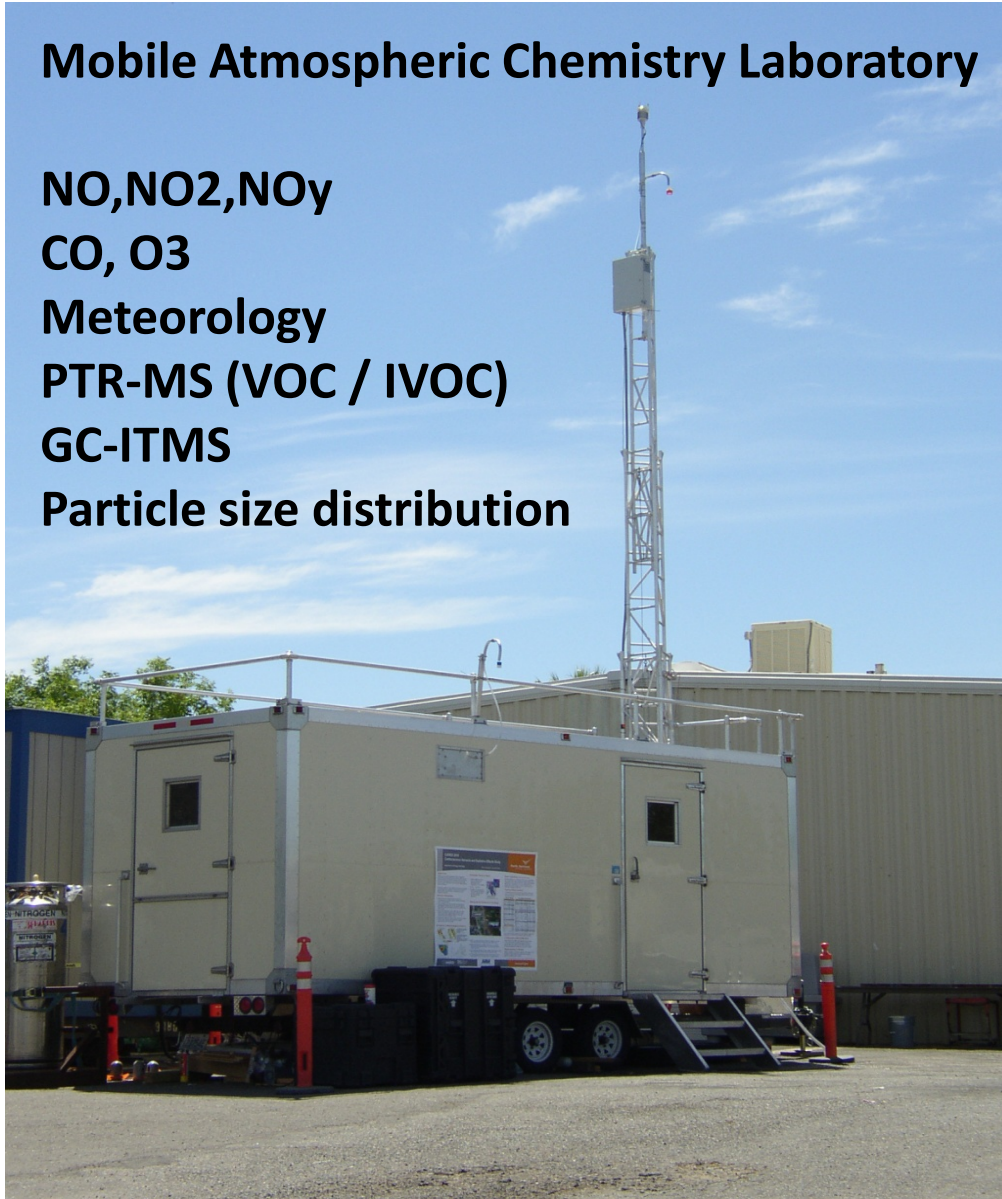
CO, O₃

Meteorology

PTR-MS (VOC / IVOC)

GC-ITMS

Particle size distribution

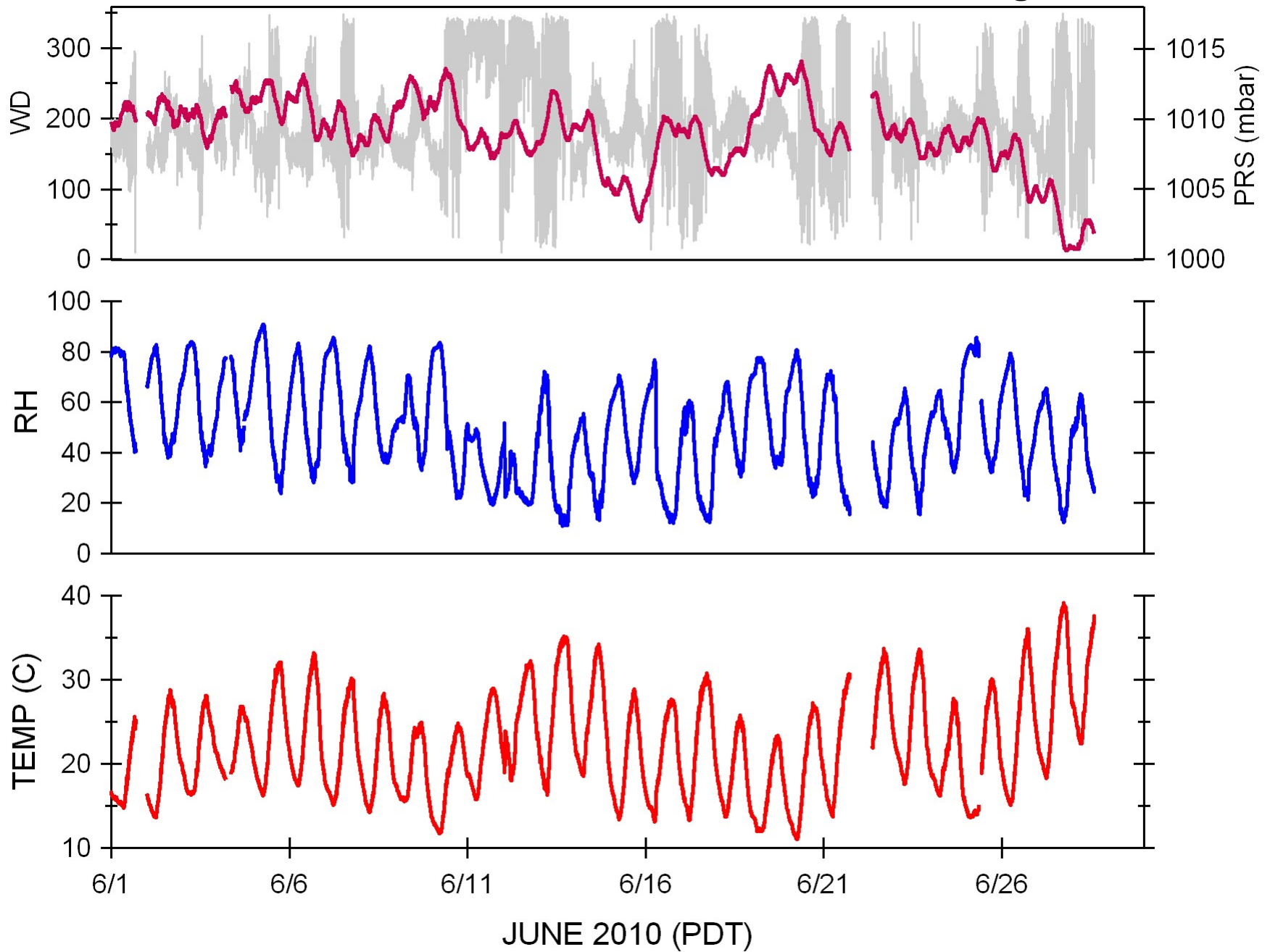


IVOC Inlet

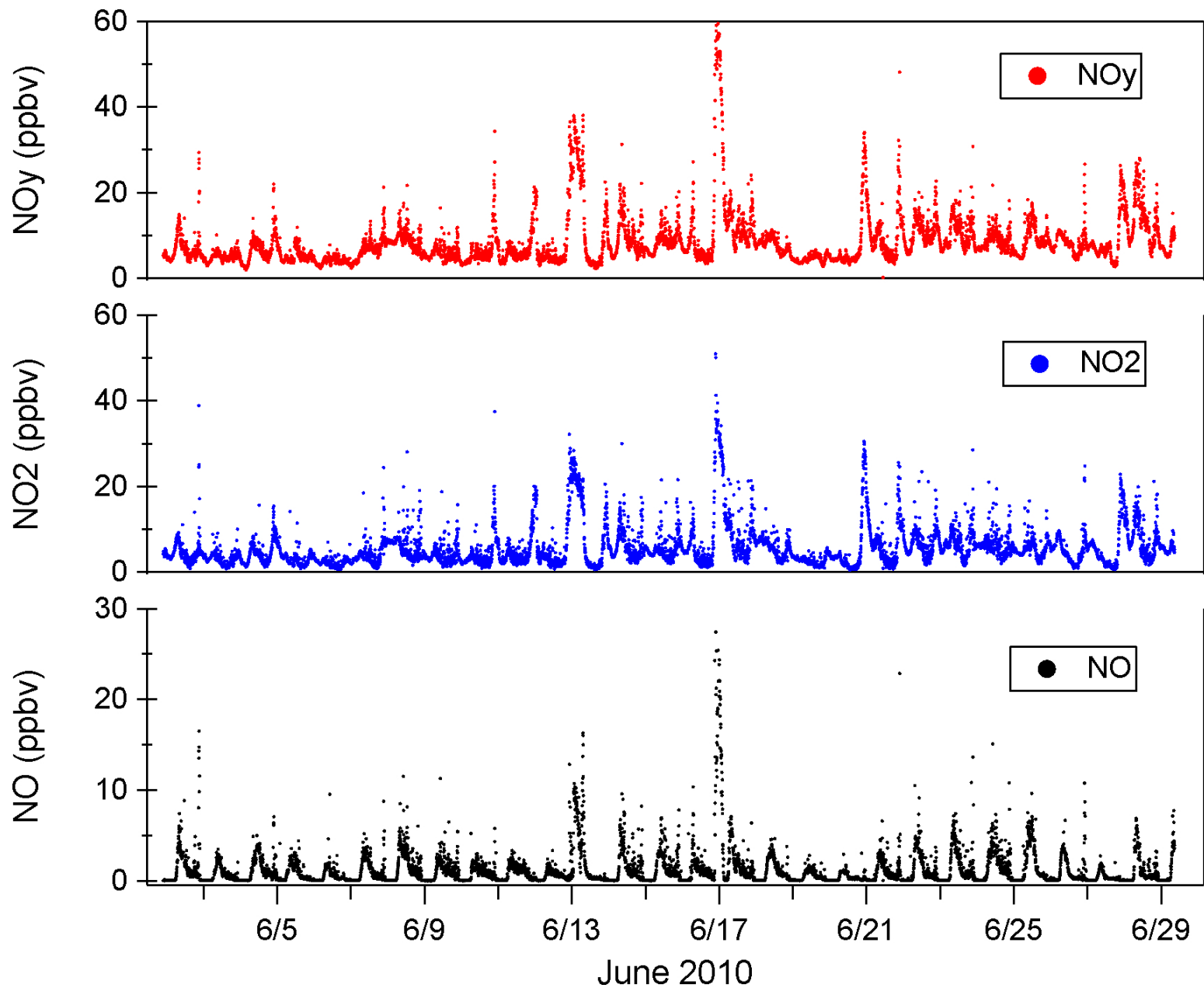
Heated electropolished
1/8" stainless steel

Meteorology at T0

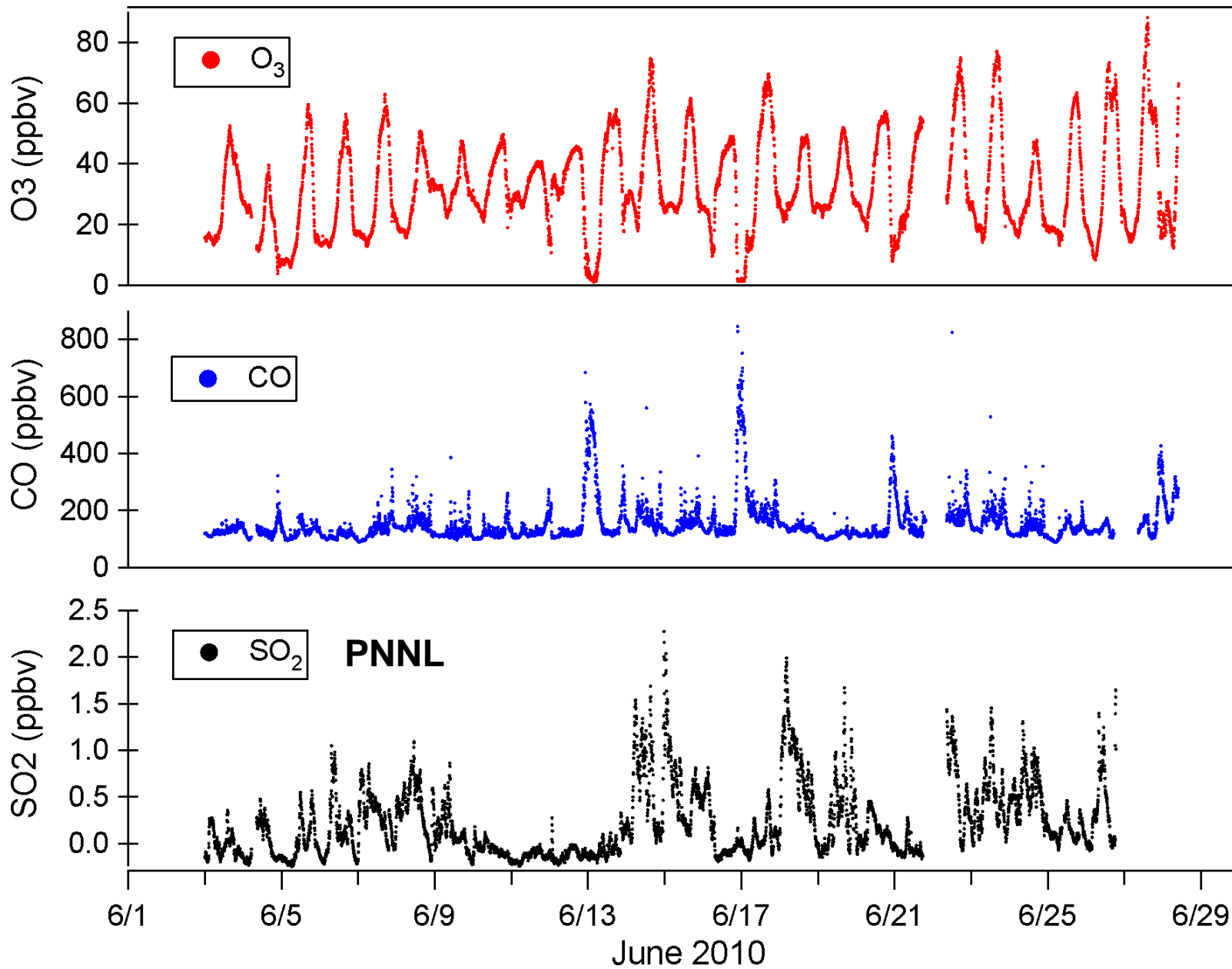
1 min averages



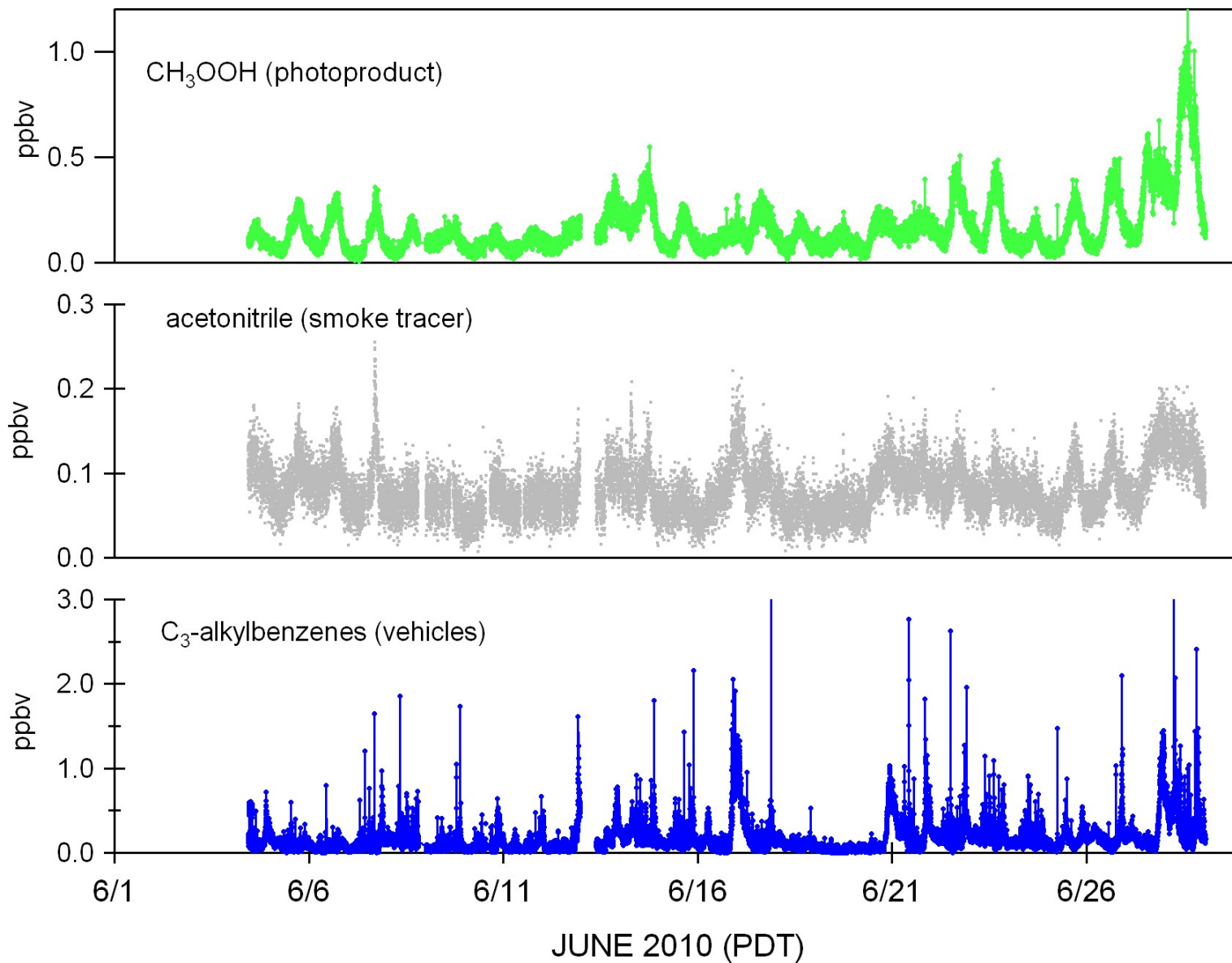
T0: NO_x : 2 minute averages



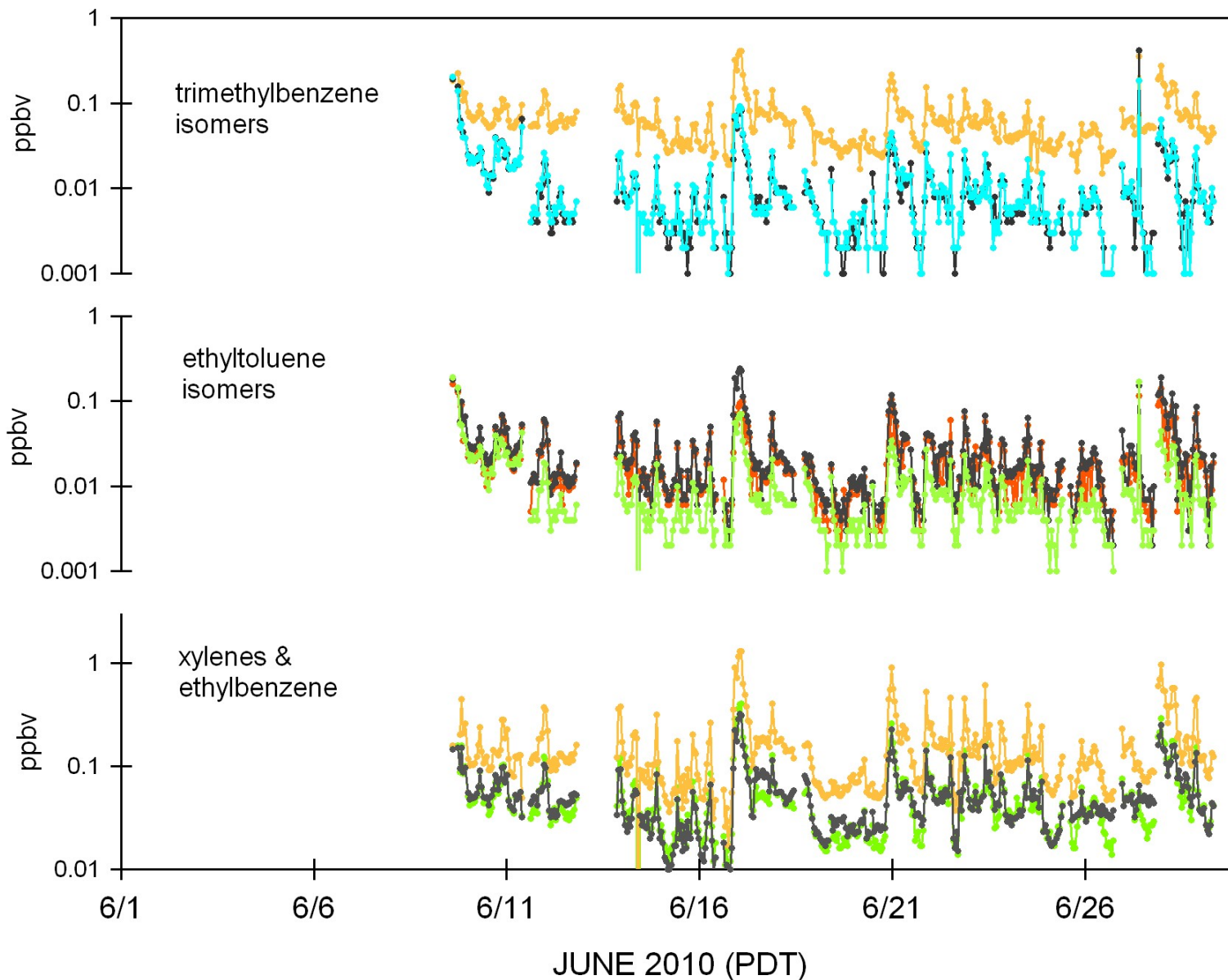
T0: Ozone and CO : 1 minute averages



T0: PTR-MS VOC Data (15 species)



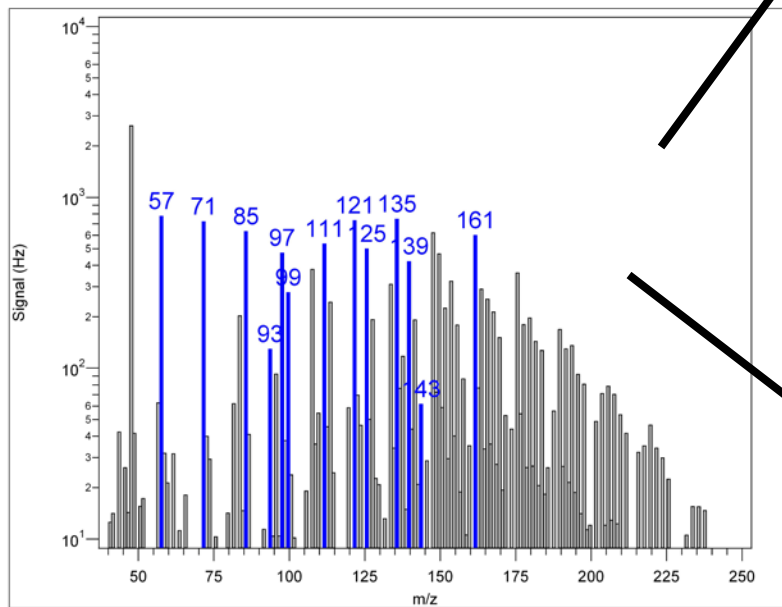
T0: GC-ITMS VOC data (22 species) : 10 min average every hr



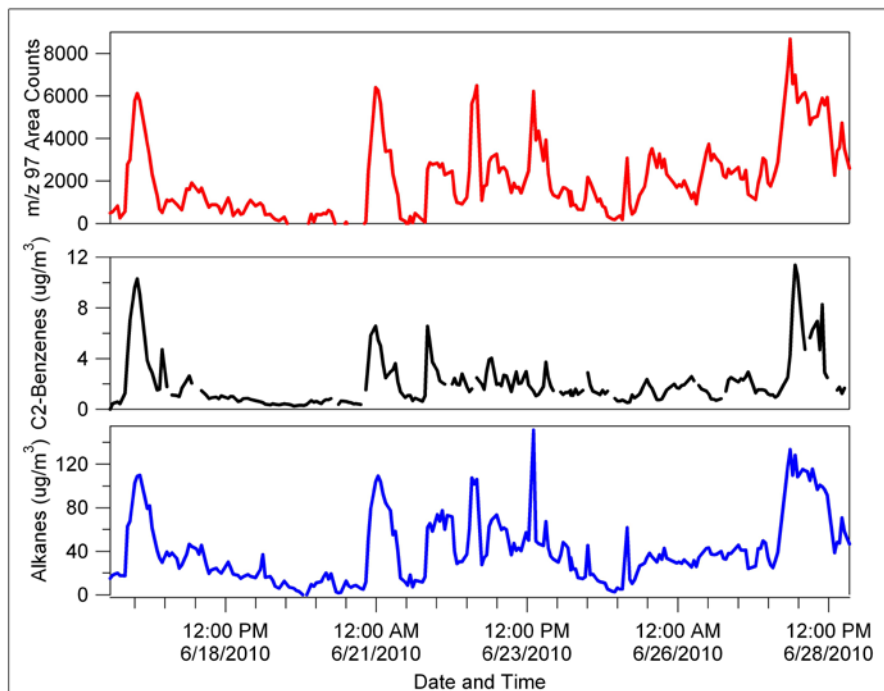
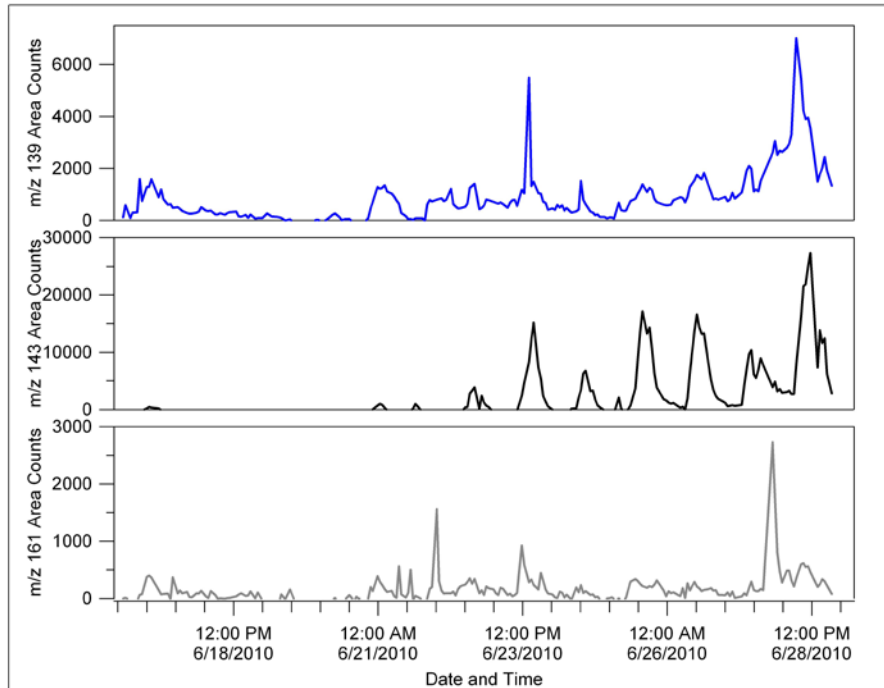
Thermal desorption PTR-MS data for diesel exhaust organics (IVOCs)

still in progress

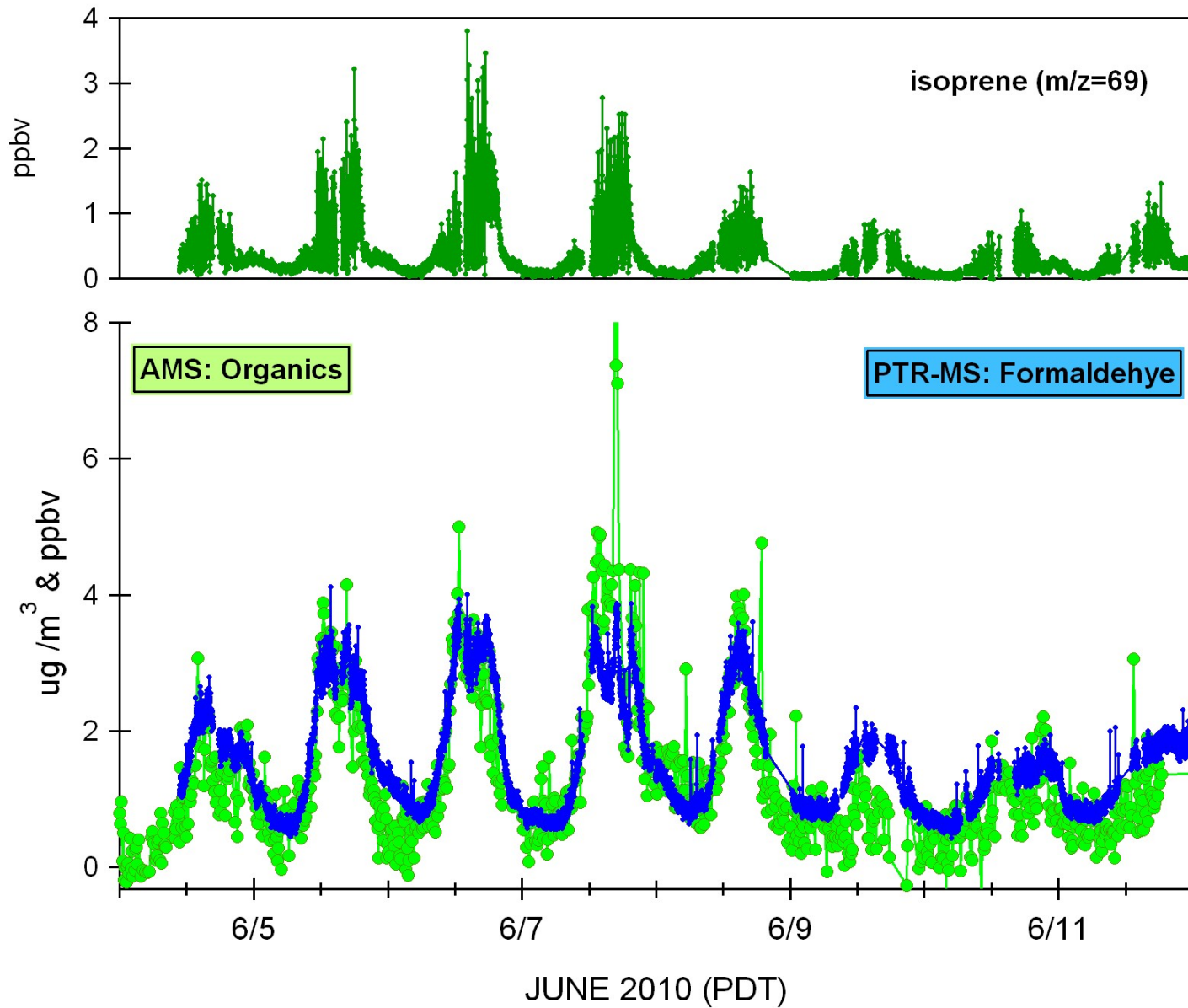
Data: June 15-June 29



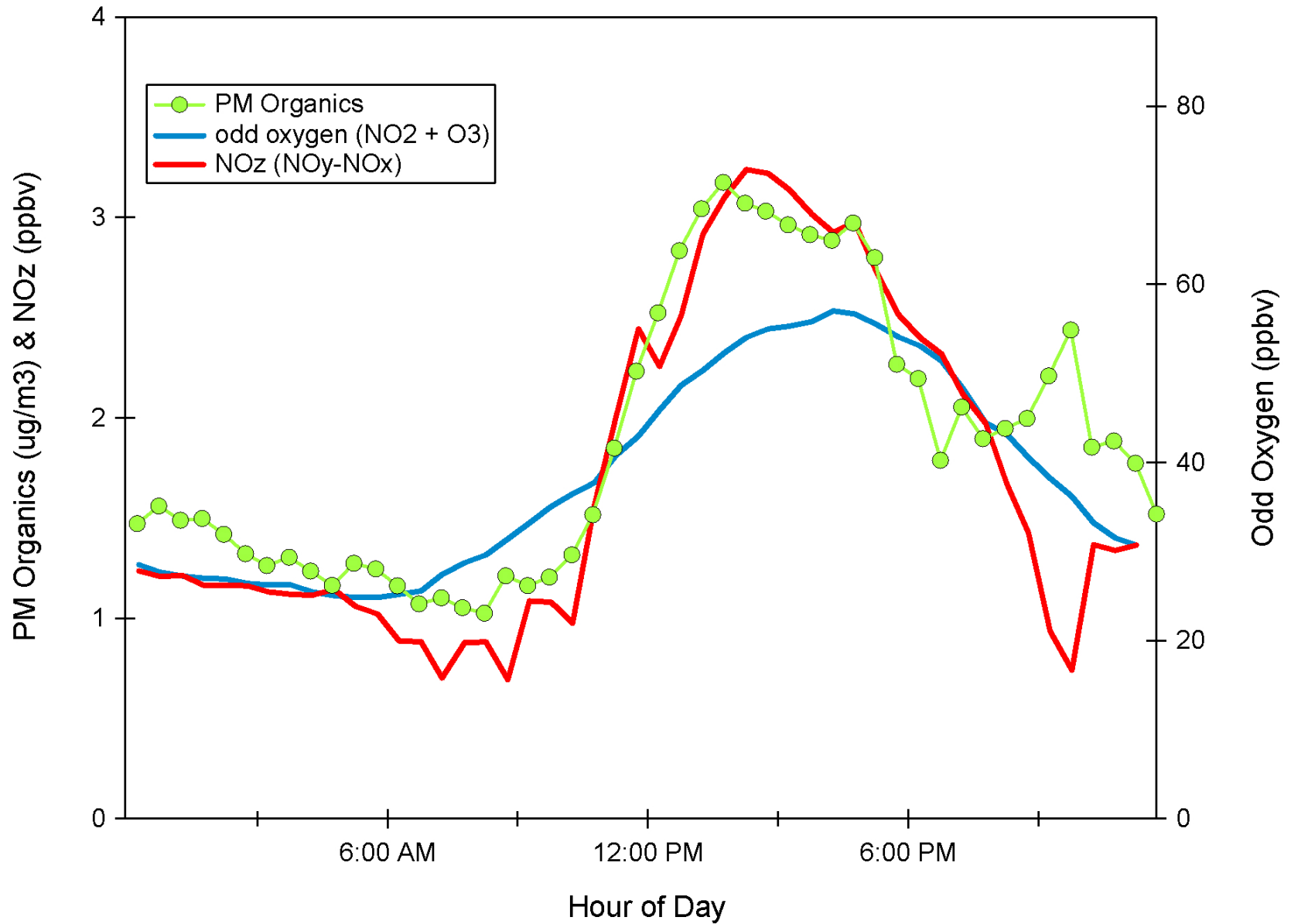
Diesel fuel mass spectrum



PM organics relation to VOC photoproducts



T0: PM Organics, NOz and Ox – ½ hour averages



Org PM relationships to compare with models, T1, G1

