

Scanning radar observations on Addu Atoll – Part II

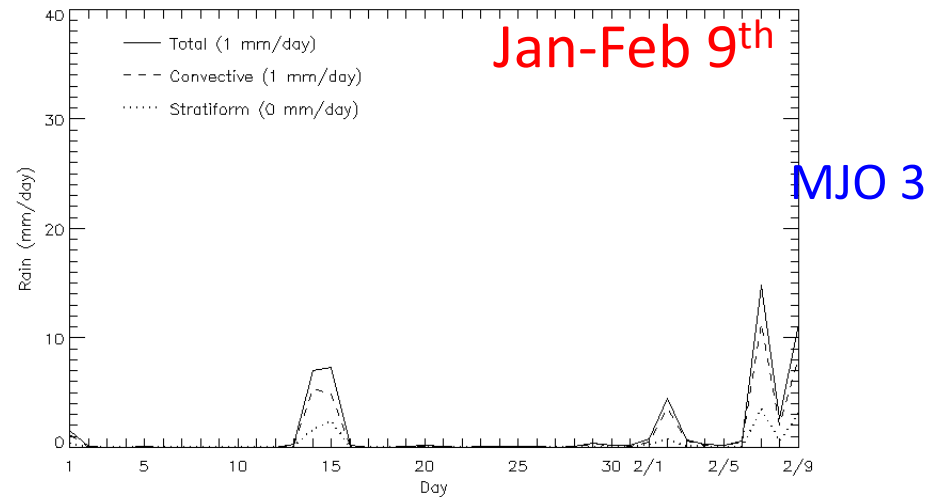
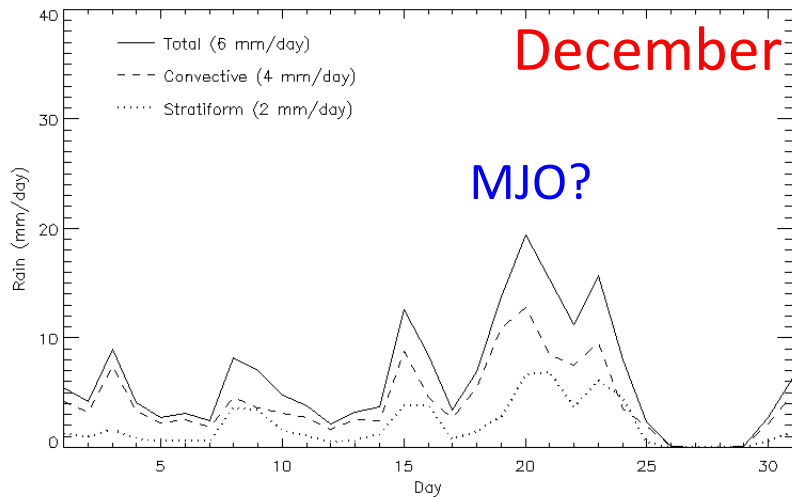
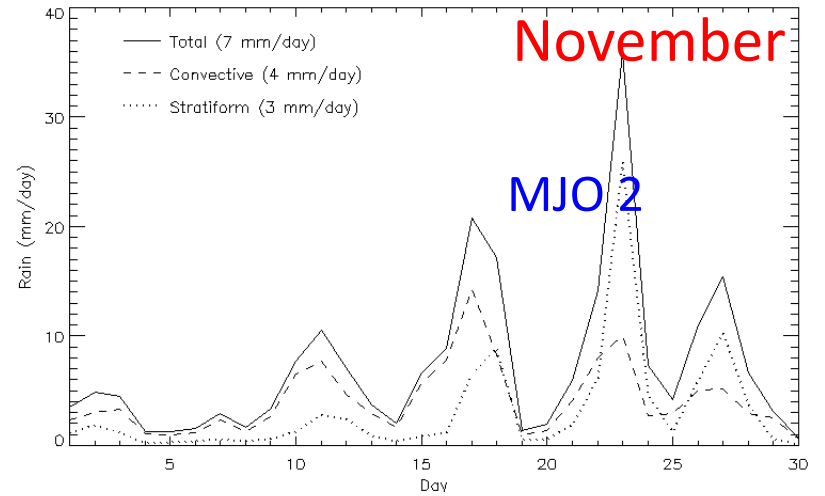
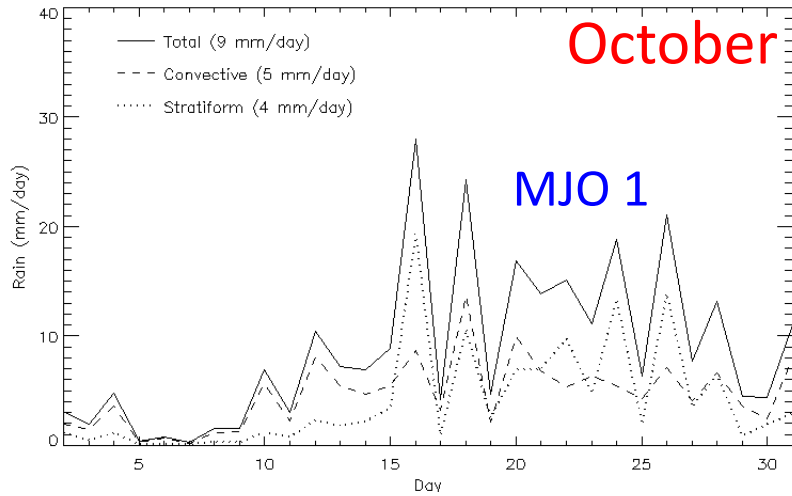
Courtney Schumacher
and the rest of the SMART-R team

SMART-R minutia

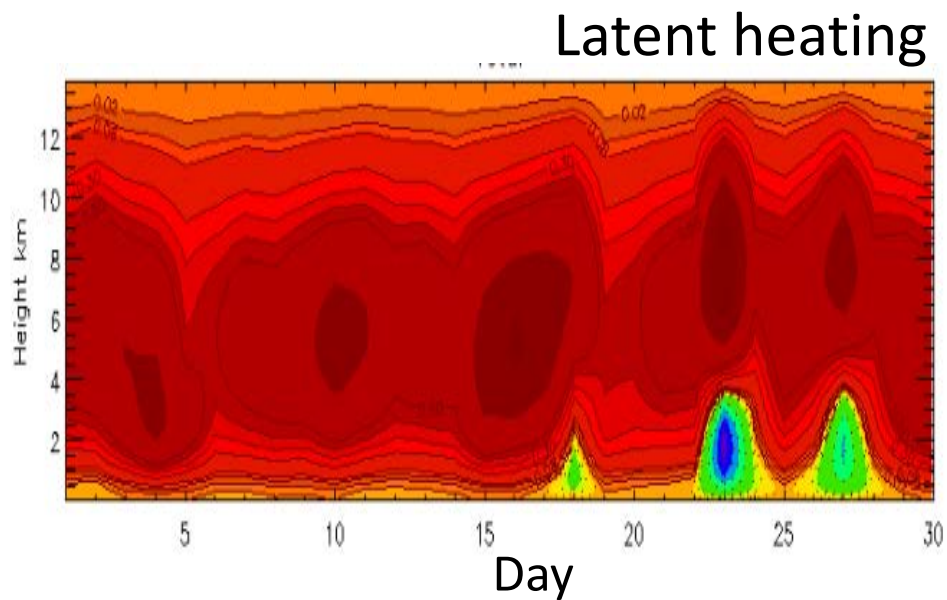
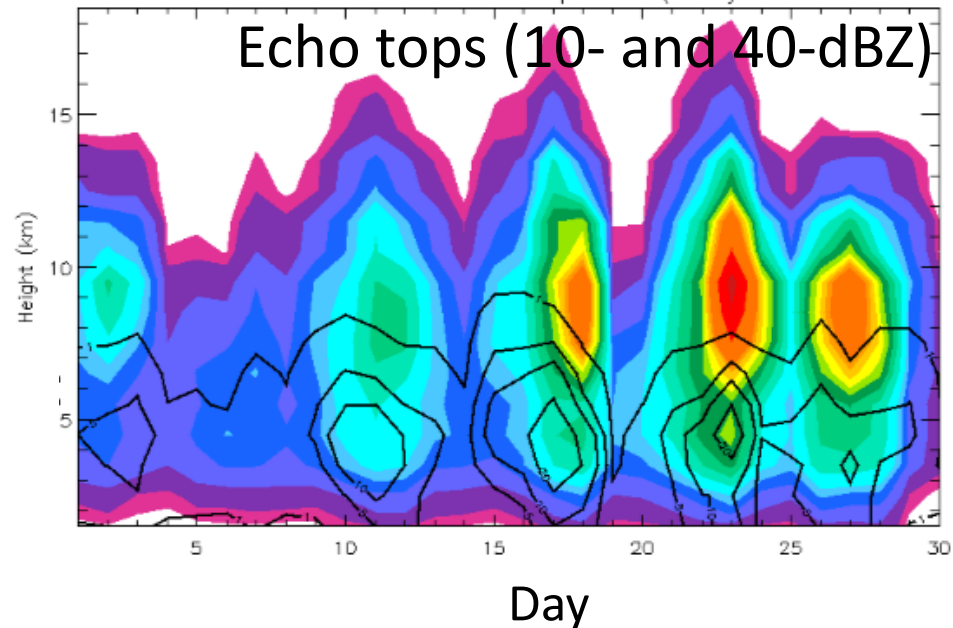
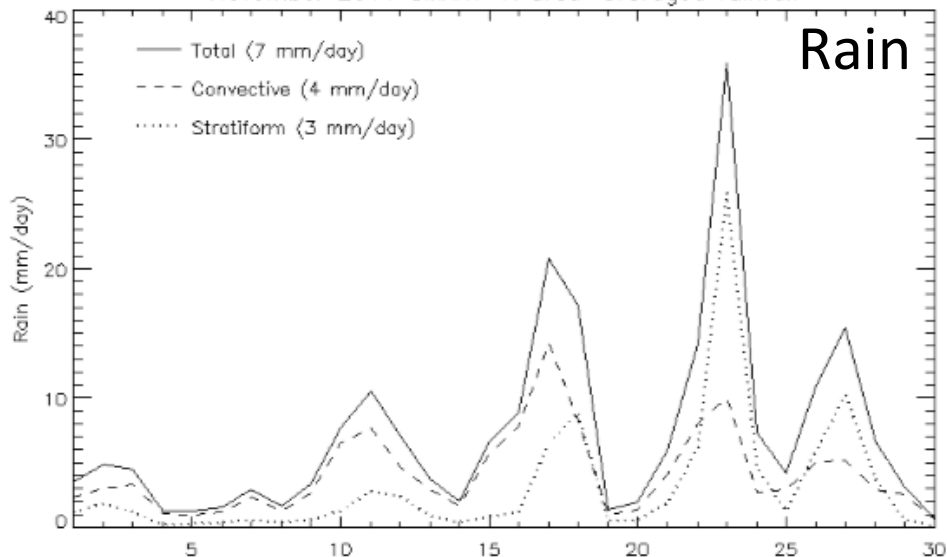
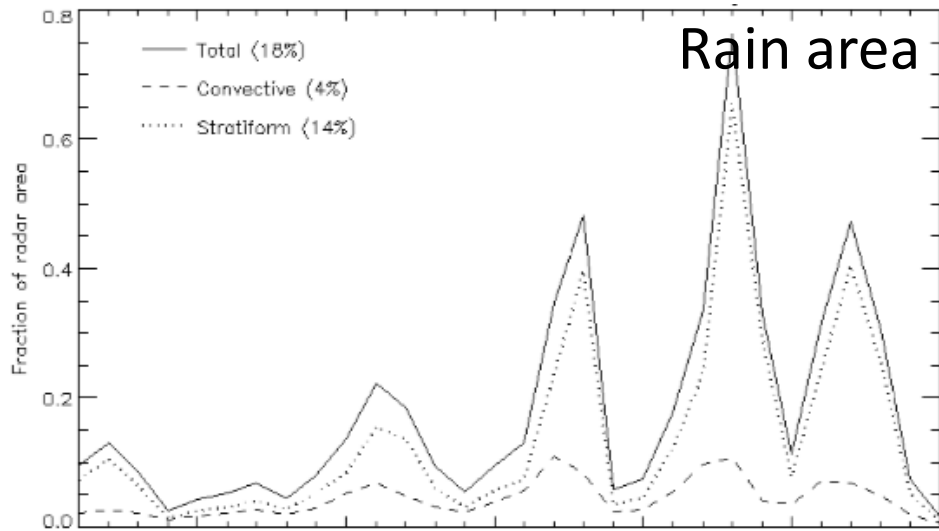


- Specifications: C-band (5 cm), Doppler, non-polarimetric, 1.5° beam
- Scan strategy: 10-min cycle, 3 RHIs (one over AMF2), 0.5° surveillance out to 300 km, two 13-tilt volume scans interleaved in post-processing (25 total tilts) out to 150 km
- Caveats: 8 dB too hot (compared to TRMM PR), strong second trip (SQI as filter), truck settling (fixing tilt right now), significant truck cab and tree blockage to west (most stats based on 180° sector)

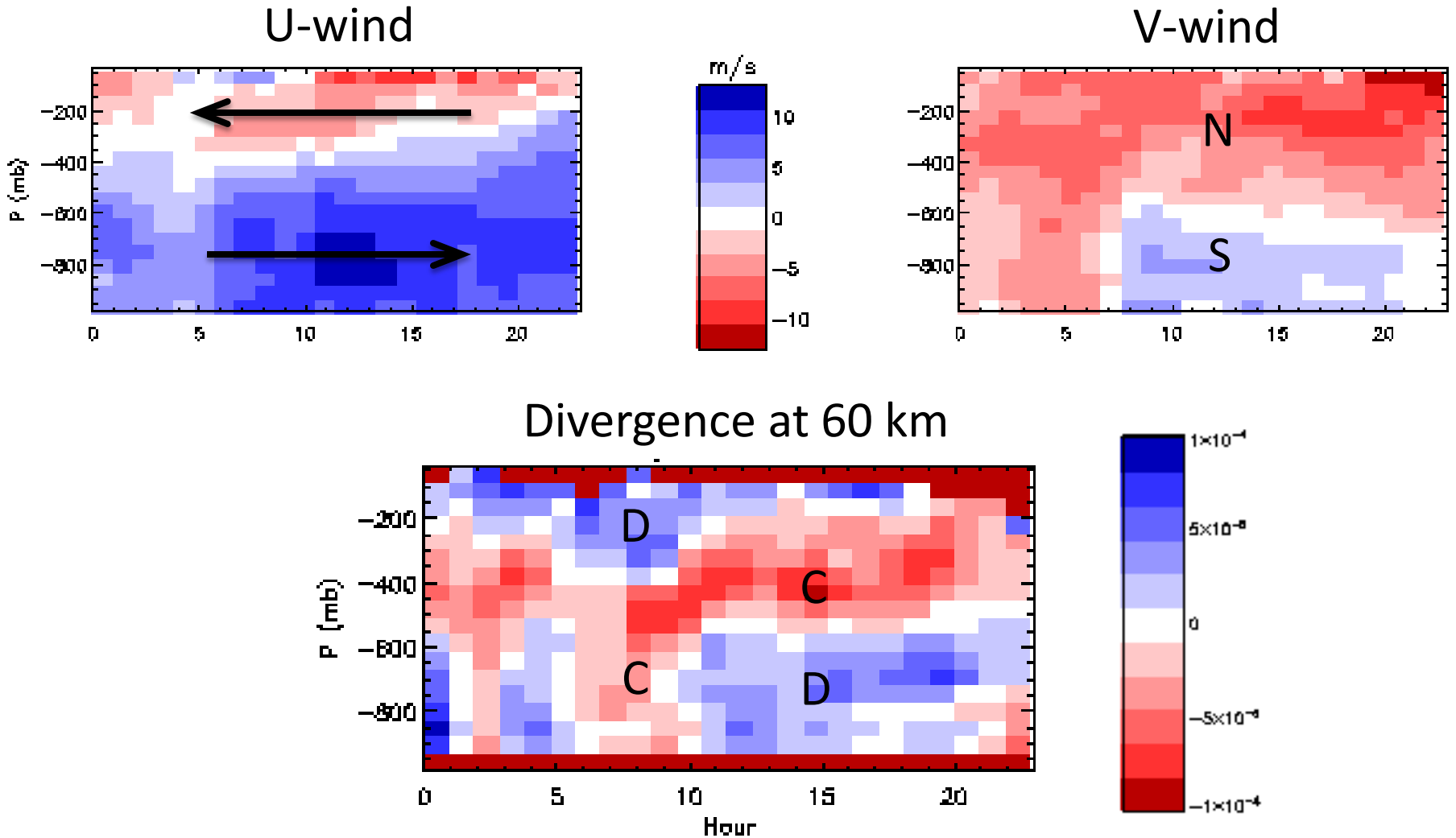
SMART-R rain accumulation



SMART-R November 2011 products



SMART-R wind + divergence (Nov 23rd)

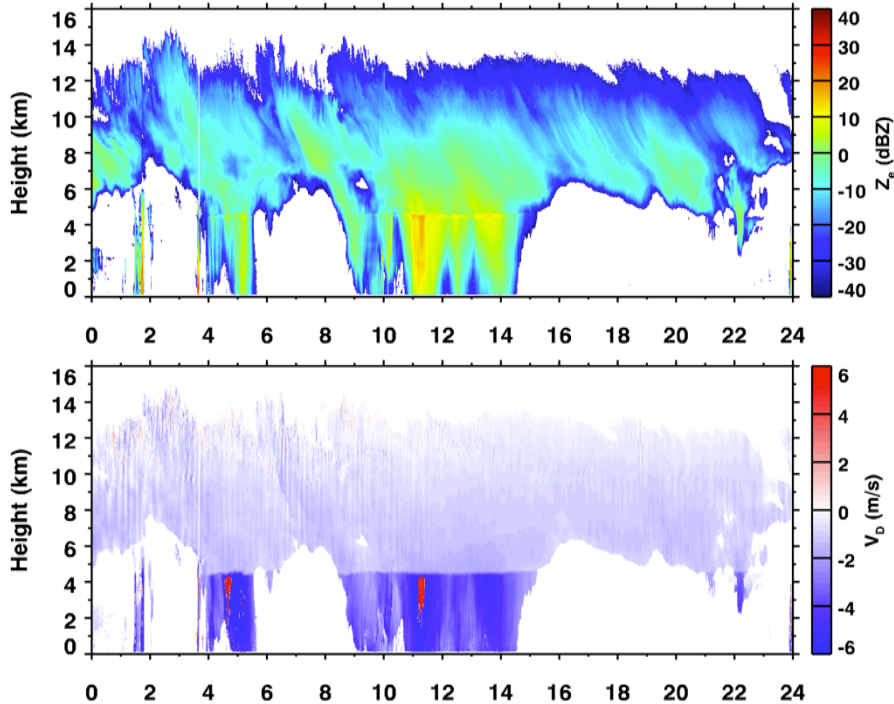


Using Mapes and Lin (2005) technique

Gan KAZR and SMART-R

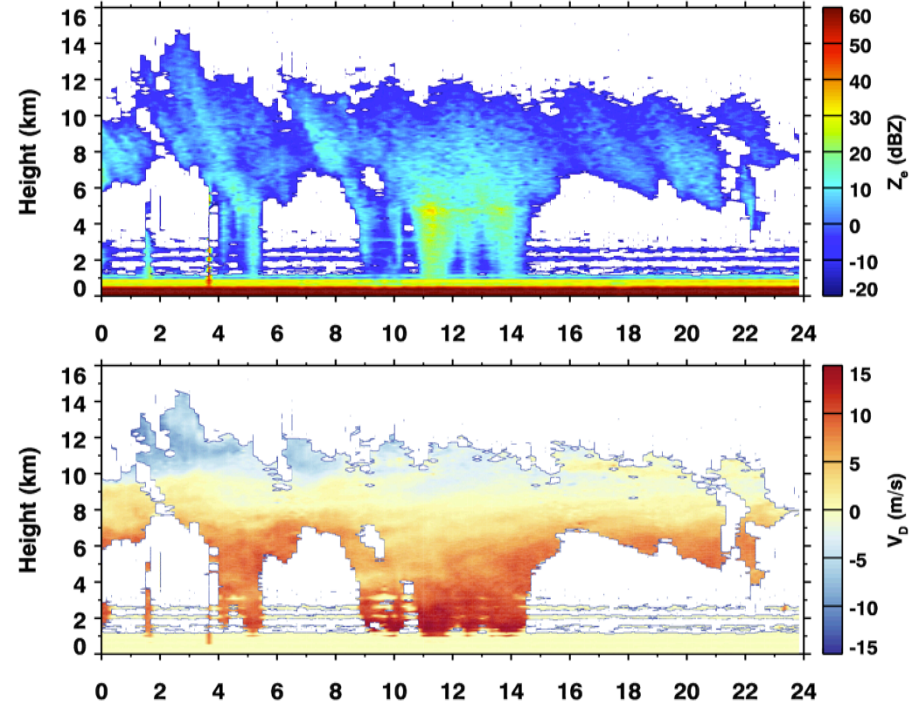
KAZR

Gan KAZR 20111221



SMART-R

Gan SMART-R 20111221



- Note: color scale is different between two radars
- Z_{top} difference is about 1~2 km



Pacific Northwest
NATIONAL LABORATORY

Proudly Operated by Battelle Since 1965