

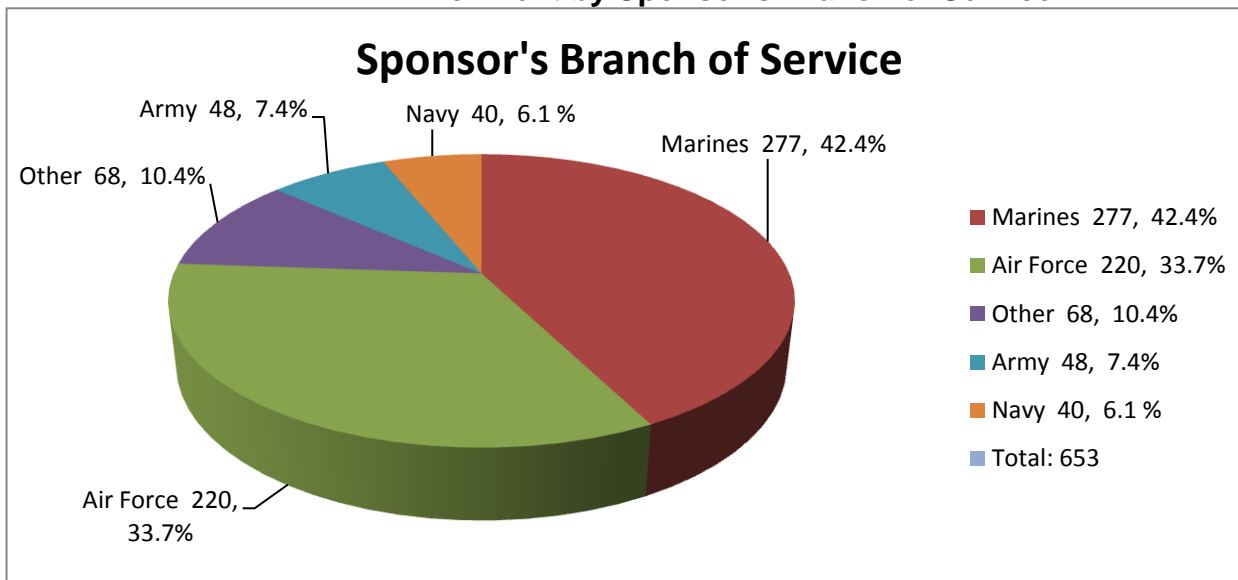
Existing School Data – Community Data and Information

Data Collection Instrument(s)

We selected the following instruments to collect data regarding Community Data and Information:

Sponsor's Branch of Service
Enrollment by Federal Ethnicity and Racial Groups
Count of English Language Learners by Level
Ryukyu Middle School Faculty Degree Levels
Ryukyu Middle School Faculty Years of Teaching Experience

Presentation of Data: Existing School Data – Community Data and Information Enrollment by Sponsor's Branch of Service



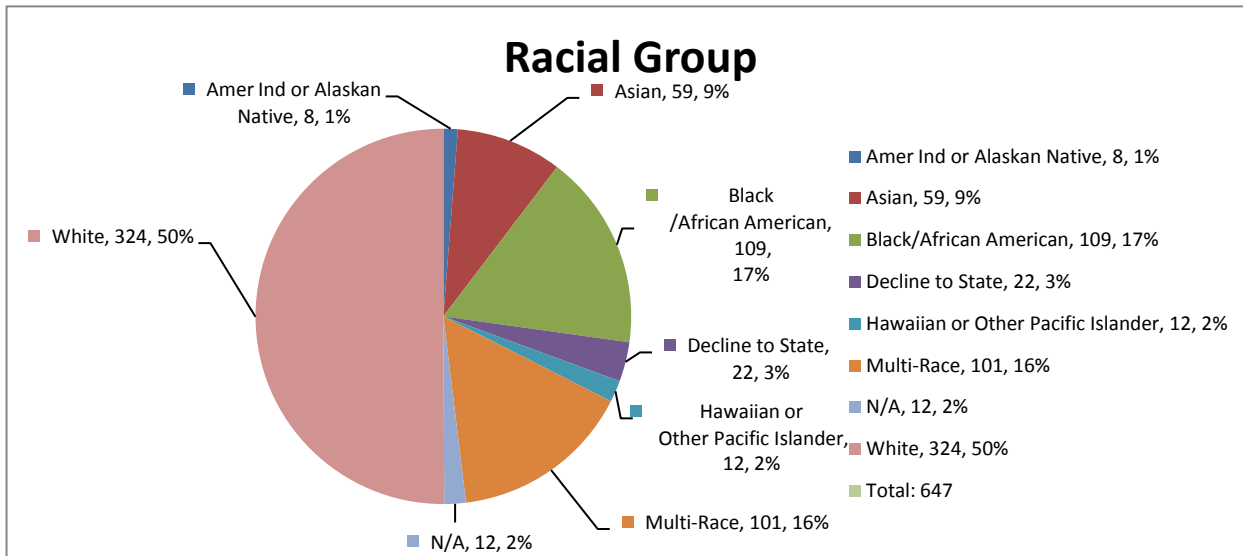
Description of Data:

A School Information System report was generated to collect information about the branch of service represented by the students' sponsors. The chart above displays data about student sponsors' branch of service. Enrollment totals may not match the Enrollment Report exactly because of slightly different inclusion rules. Students with invalid Employer Type codes and students with other home schools are not excluded from this report

Analysis of Data:

A review of the branches of service represented by our students' sponsor show that most sponsors, 48.3%, fall under the purview of the Department of the Navy. Of the 317 sponsors that represent the Department of the Navy, 277 (or 87% of this total) are members of the Marine Corps. This concentration holds true when comparing the individual branches to the total number of student sponsors. Of the total, 42.4% of sponsors are members of the Marine Corps. This is followed by the Air Force (33.7%) and then the Army with 7.4%. The Navy has the least representation with only 6.1% of sponsors affiliated with it. Those sponsors not considered members of the armed services represent 10.4% of total sponsors. They represent the fourth largest group in our school sponsor population.

Presentation of Data: Existing School Data – Community Data and Information Enrollment by Federal Ethnicity and Racial Groups



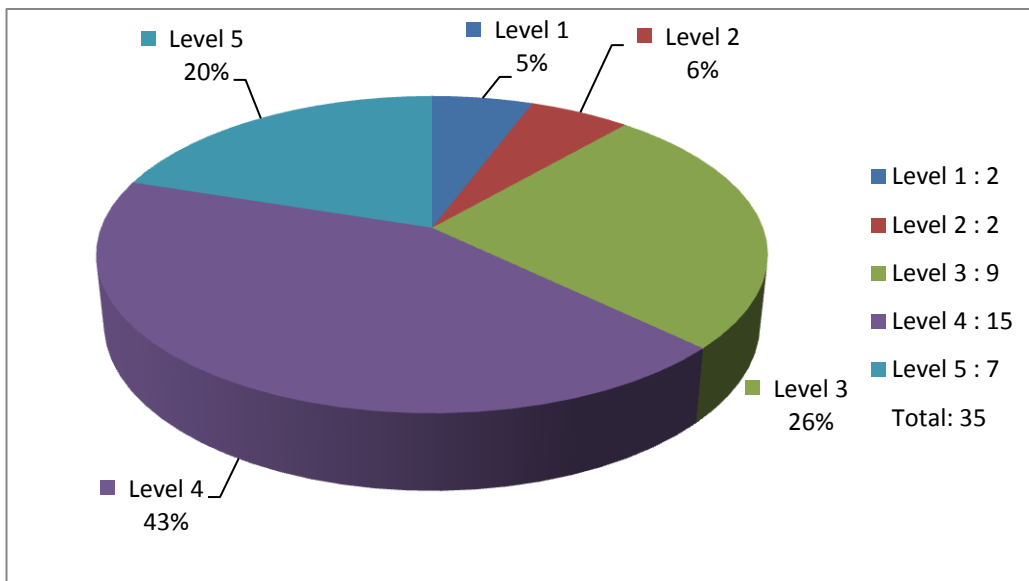
Description of Data:

A School Information System report was generated to collect information about ethnicity and racial group of our students. The chart above displays data about ethnicity and racial group of our students.

Analysis of Data:

A macro analysis of the data shows that 50% are White. 3% of the population decline to state a racial group. An analysis of the individual ethnicity/racial groups shows a school profile that is dominated by those considered White (50%), followed by our Black/African American population of 17%. The least represented racial groups are American or Alaskan Native and Hawaiian or other Pacific Islanders. Both groups represent 3% of the total school population. Multi-Race and Asian racial groups represent 16.% and 9% of the total population, respectively.

Presentation of Data: Existing School Data – Community Data and Information Count of English Language Learners by Level



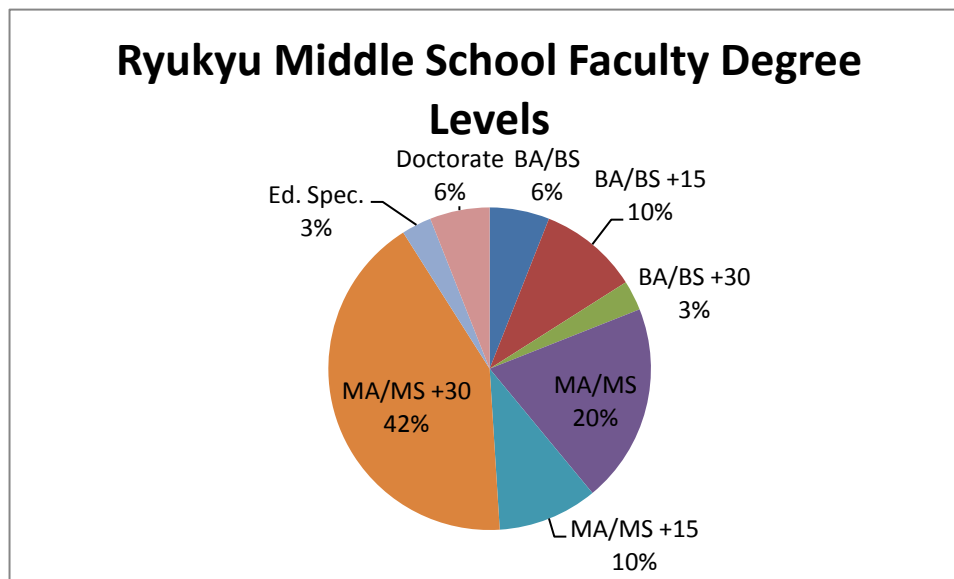
Description of Data:

A School Information System report was generated to collect information about the number of students that are in the ESL program. The chart above displays data about number of students based on Levels in the ESL program.

Analysis of Data:

Ryukyu Middle School has a total of 35 students enrolled in ESL. Two of the students are Level 1 (6%). Two of the students are level 2 (6%). Nine of the students are Level 3 (26%) and 15 of the students are Level 4 (43%). Seven students are at Level 5 (20%). Students at Levels 1,2 and 3 are given direct ESL service. The total number of students receiving direct ESL services at Ryukyu Middle School is thirteen students (37% of the total ESL population). Eighteen students (51%) are monitored by the ESL Teacher.

Presentation of Data: Existing School Data – Community Data and Information Ryukyu Middle School Faculty Degree Levels



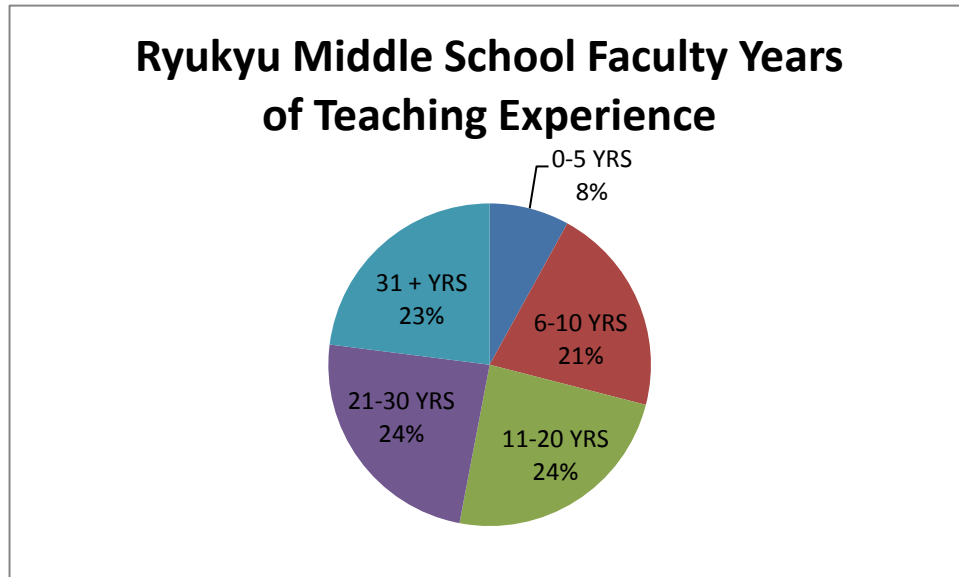
Description of Data:

A School Information System report was generated to collect information about the Education degree earned the staff at Ryukyu Middle School. The chart above displays data about specific degrees earned by the staff at Ryukyu Middle School.

Analysis of Data:

There are currently 62 teachers at Ryukyu Middle School. Four Teachers have Bachelors Degree (6%), Six have a Bachelors plus 15 Graduate Credits (10%) and 2 have a Bachelors plus 30 Graduate Credits (3%). Twelve teachers have a Masters Degree (20%); Six have a Masters plus 15 Graduate Credits (10%) and Twenty-Six have a Masters plus 30 Graduate Credits (42%). Four of the teachers have their Doctorate Degree (6%). Finally, two of the teachers has their ED/Spec (3%). Eighty percent of the staff at Ryukyu has earned a Masters or higher degree.

**Presentation of Data: Existing School Data – Community Data and Information
Ryukyu Middle School Faculty Years of Teaching Experience**



Description of Data:

Ryukyu Middle School teachers responded to how many years of teaching experience they had. The chart above displays the data concerning Years of Teaching Experience.

Analysis of Data:

Of our responding RMS faculty over 56% have been teaching 17 years or more years. Conversely 8% have 1-5 years of teaching experience. Over half of the teaching population at RMS has 17+ teaching years 71% have over 11 years of experience. This indicates that Ryukyu Middle School has a staff comprised of veteran teachers.