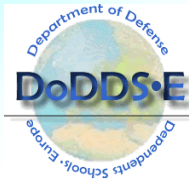
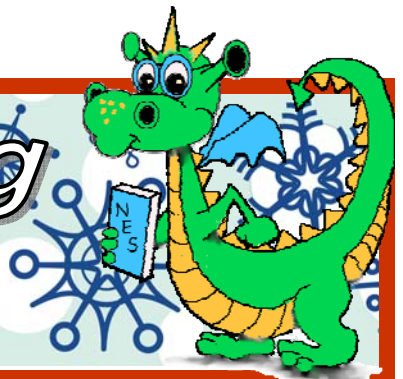


18 January 2013



Netzaberg News



Calendar Items

- **Thursday, 24 January** - End of First Semester and Second Quarter
- **Thursday, 31 January:** Honor Roll Assembly for 4th & 5th Grades - 8:15—9:00 MPR
- **January - May:** Cold Weather! Dress for the Bavarian winter!
- **Friday, 1 February:** Popcorn Sales - \$.25 a bag (2 limit)
- **Monday, 21 January:** Holiday, Martin Luther King Day - No School
- **Friday, 8 February** - Fasching Parade, 1300

School Hours:

0800-1435

It's the responsibility of the parent/guardian to report student absences to the front office before 9:00 AM.

Email:

NetzabergES.Attendan@eu.dodea.edu

Or call 09645-917-9183/9184

Attachments:

- [After School Clubs](#)
- [Science Club Flyers](#)
- [Afterschool Club Consent Form](#)

 **be here!**

DoDEA's New Attendance Policy

Fifth Annual Mardi Gras/Fasching Parade

Greetings Revelers!

It is with great joy and fanfare that I am announcing that Netzaberg's Fifth Annual Mardi Gras/Fasching parade will once again roll! After four previous successful parades, we are eagerly anticipating this year's event.

This year's school theme is, "Netzaberg Elementary Salutes Our Amazing Universe." All class participants will select themes that fall under this umbrella idea. From ideas that have already been posted, it looks as if this year's parade will be the best yet.

Our parade will once again begin on the blacktopped area between the middle school and our elementary school. The actual parade will roll at approximately 1315, on Friday, 8 February, so if you are able to come out and support us in this endeavor, we will greatly appreciate having you.

Because the parade will wind around from the back of the school, past the CDC, and back toward the front of the building, taking a viewing position in the front of the school might provide you with the best possible spot for seeing the parade.

Please join in the fun and costume if you like. We want this music-filled extravaganza to be fun for all, so let your hair down and join us for an afternoon of merriment.

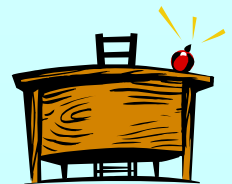
Thanks in advance for your support.

Parade Chairman

End of Day Interruptions

In order to maximize daily learning, **please do not** pick-up your child between **1400-1435**. The last 35 minutes of the day bring closure to a successful day of learning. Parents picking up their children from school are requested to wait outside. The congestion of adults and strollers make the hallways a chaotic and unsafe area. We do understand that some appointments cannot be scheduled late in the afternoon, however a doctor's note is requested when signing your child into or out of school.

Thank you for your support.



Netzaberg Elementary School Mission

To provide an exemplary education that inspires and prepares all DoDEA students for success in a dynamic, global environment.

Are You A Reading Role Model?



"Reading volume – the amount that students read in and out of school – significantly affects the development of reading rate and fluency, vocabulary and general knowledge of the world, overall verbal ability, and last, but not least, academic achievement." - Cunningham/Stanovich 1998

Is reading important in your home? Do your children see you reading? Parents are the most influential role models for their children. My father is an example of a reading role model. One of the most vivid memories of my childhood is my father reading the newspaper each night. He would come home from work, and after kissing each one of us he, would sit down and open up the local paper. I couldn't wait until I was old enough to be just like my dad and read the newspaper for myself.

Are you setting a reading example in your home? Try instituting a Family Reading Time. Set aside 20-30 minutes each night for family reading. Have the entire family sit down and read together. Family members can read a text of their own (book, magazine, cookbook, newspaper, graphic novel, etc.) or you can all read a book together. The important thing is that everyone is reading or listening to reading. Even the littlest members of your family can get in on this action.

Happy Reading!

NES Language Arts/Reading Specialist

Emergency Contacts

Many moves are taking place, has your child's Emergency Contact left the area? Please update Emergency Contacts or phone numbers with the Main Office.

Please note, if there is ever an emergency situation where the school is evacuated and the parent cannot be located, the Emergency Contact will be called. The student would then be released to the Emergency Contact.



Is it Lost?

Lost and Found clothing, lunch bags, jackets, umbrellas, etc., are overflowing. Please stop by and check out what has been found. The Lost & Found area is to the right on the inside of the main doors to the school.



Spirit Wear Sales

Spirit Wear sales are every 2nd and 4th Wednesday of the month from 1400-1435.

All shirts and sweatshirts are \$10. Purchases must be made in person on the days mentioned. Currently there are no adult sizes, but lots of kid sizes.

Reading Aloud and Thinking Aloud

Good readers unconsciously create visual images in their heads while they are reading. It's all part of the comprehension process. While you are reading to your child, think out loud about the images you see or the questions that may arise. That means explaining the ideas, pictures, questions, and connections that go through your mind as you read a passage. Here's an example of a think aloud: The title of this book is Bobby: The Bravest Boxer. There is a picture of a dog on the cover so that tells me Bobby is a boxer dog instead of a man that boxes. I wonder what the dog did that proved his bravery. I need to read ahead and find out. Oh, on the next page it says, @Bobby got very nervous when the children were playing outside all alone, especially if they are near the street. That tells me that Bobby may do something to protect one of the children in the family. But how? I have to read on to find out more.

2011, June 15). Read aloud and thinking aloud. Retrieved from Reading Instruction Resources for Teachers & Parents website: <http://www.k12reader.com>

All 4th grade students will be administered the National Assessment of Educational Progress (NAEP) Assessment, on February 20, 2012. Below is a link to provide more information on the purpose of NAEP testing.

<http://nationsreportcard.gov/parents.asp>



Moving Soon?



PCSing Students must have withdrawal paperwork and PCS orders turned in to the main office at least five business days prior to the student's last day of school. This notice allows us to have student records ready for parents to pick up and hand carry to the student's new school. If you would like to submit your paperwork electronically please email wendy.streeter@eu.dodea.edu to request the required forms.



Calling All Volunteers

Do you have an hour or two to spare? Maybe longer? We are in need of volunteers to help out with various projects. Keep in mind, Field Day on Friday, June 1st and other dates/times as well. Please contact our front office to find out more information at 09645-917-9184.



Good Grades Pay Off at the Grafenwoehr Exchange

The Army & Air Force Exchange Service rewards military students who excel. Students who receive a report card with a "B" average or better can choose an array of free and discounted products through the Grafenwoehr Exchange's "You Made the Grade" program. Now in its 12th year, "You Made the Grade" includes a free Burger King hamburger kids meal, Subway 6-inch combo, a magazine of their choice and even a complimentary haircut. Students "making the grade" can also register for a drawing to win a \$2,000, \$1,500 or \$500 Exchange gift card. To receive a "You Made the Grade" booklet, eligible students present a valid military ID and proof of a "B" or better average to the Grafenwoehr Exchange. Students may receive one coupon package for every qualifying report card, but may enter the gift card drawing only once per grading period.



Science Clubs

Application Deadline is 31 January

It is predicted these will be very popular clubs. Applications for science clubs will be put into a lottery. Names will be randomly drawn for an equal opportunity for all interested students. Turn in applications to the front office.



We are on the web!

<http://www.netz-es.eu.dodea.edu>



Netzaberg Elementary School
Unit 28130, APO AE 09114
Phone: DSN 472-9184/9185 / Comm. 09645-917-9184
Email: Netzaberg.ES.Principal@eu.dodea.edu

Bavaria District Superintendent's Office
Unit 28614, APO AE 09177
Phone: DSN: 468-7429 / 0981-183-429