

# The New and Improved Southern Great Plains (SGP)

John Schatz<sup>1</sup>, David Breedlove<sup>1</sup>, David Swank<sup>1</sup>,  
Daniel Hartsock<sup>2</sup>, and Douglas Sisterson<sup>3</sup>

<sup>1</sup>Native Energy & Technology, Inc.

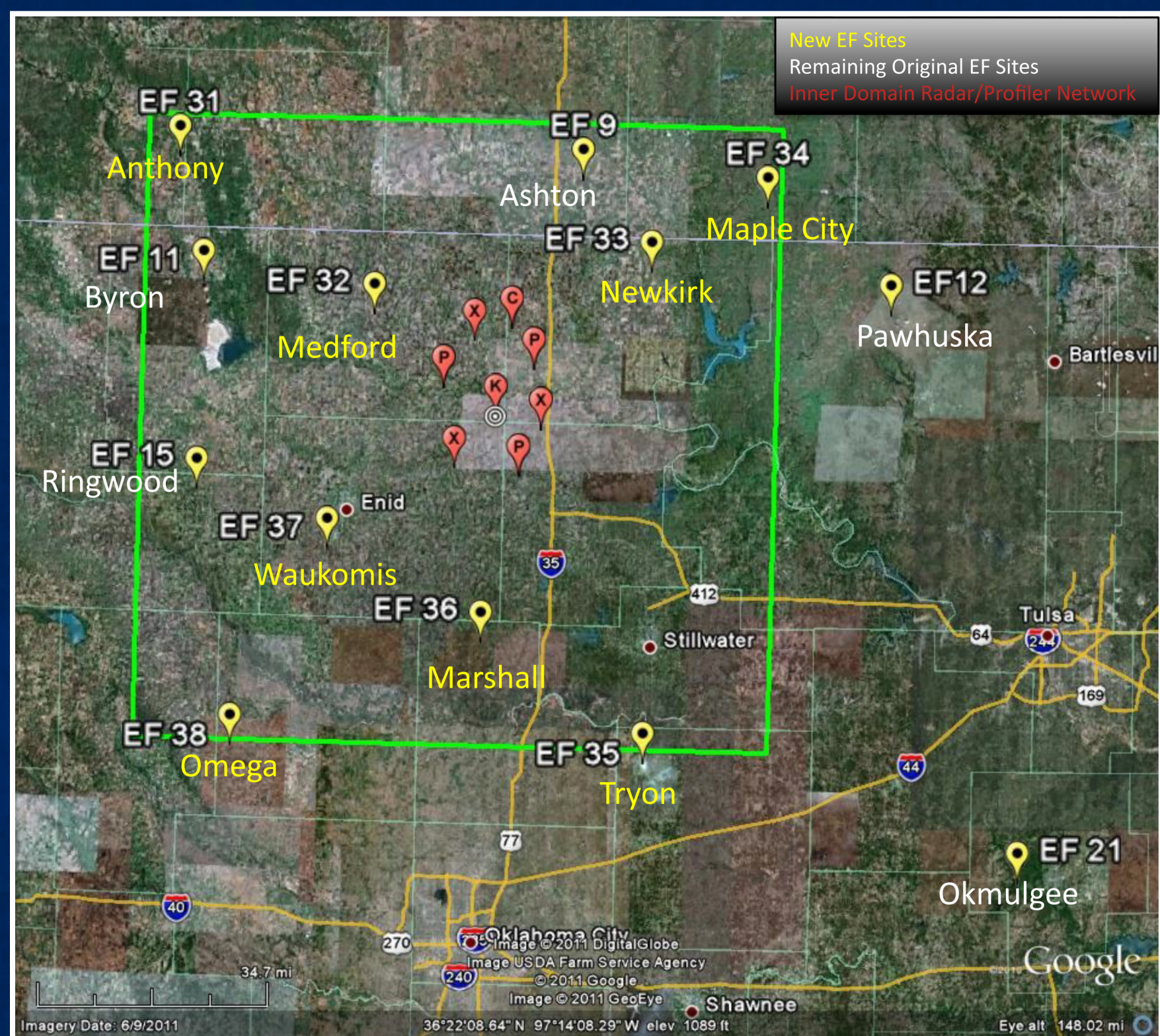
<sup>2</sup>University of Oklahoma

<sup>3</sup>Argonne National Laboratory

During the past two years the SGP has been undergoing a major configuration change that has resulted in new and exciting capabilities. The SGP instrumentation previously contained in 31 measurement sites in a 55,000-square-mile grid has shrunk to 21 sites and to a grid size less than 9000 square miles, for better alignment to current general circulation models, improved operational logistics and efficiencies, and cost savings. This poster illustrates the new SGP footprint and provides pictures of all the new sites.



Central Facility Radar-K



Anthony EF-31 (ECOR)



Maple City EF-34 (EBBR)



Marshall EF-36 (EBBR)



Medford EF-32 (EBBR)



Newkirk EF-33 (ECOR)



Omega EF-38 (ECOR)



Tryon EF-35 (EBBR)



Waukomis EF-37 (ECOR)



Ashton EF-9 (EBBR)



Byron EF-11 (ECOR)



Okmulgee EF-21 (ECOR)



Pawhuska EF-12 (EBBR)



Ringwood EF-15 (EBBR)



Billings Profiler-P (SE)



Billings Radar-X (SE)



Deer Creek Radar-X (NW)



Garber Radar-X (SW)



Lamont Profiler-P (NW)



Nardin Radar-C



Tonkawa Profiler-P (NE)