



Plotting and Display Update

ARM Data Quality Office
2011 Atmospheric System Research
Science Team Meeting
March 29, 2011



U.S. DEPARTMENT OF
ENERGY

Office of
Science

Generic Time Series Plotter

- In the past, the Data Quality (DQ) Office put forth a lot of time and effort towards writing code to produce plots for data analysis
- Generic plotting tools were developed to increase efficiency of plot generation
- Generic Plotters
 - Time Series
 - 2-Dimension Profiles
 - Planned Position Indicator(PPI) and Range Height Indicator (RHI)

ARM

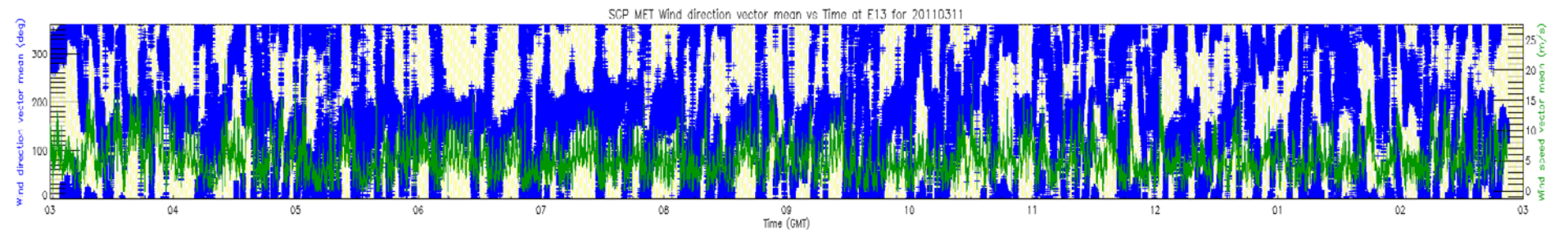
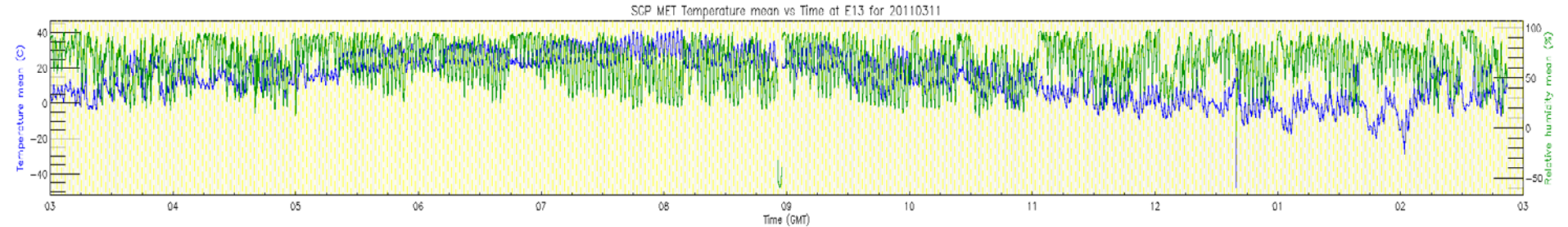
CLIMATE RESEARCH FACILITY



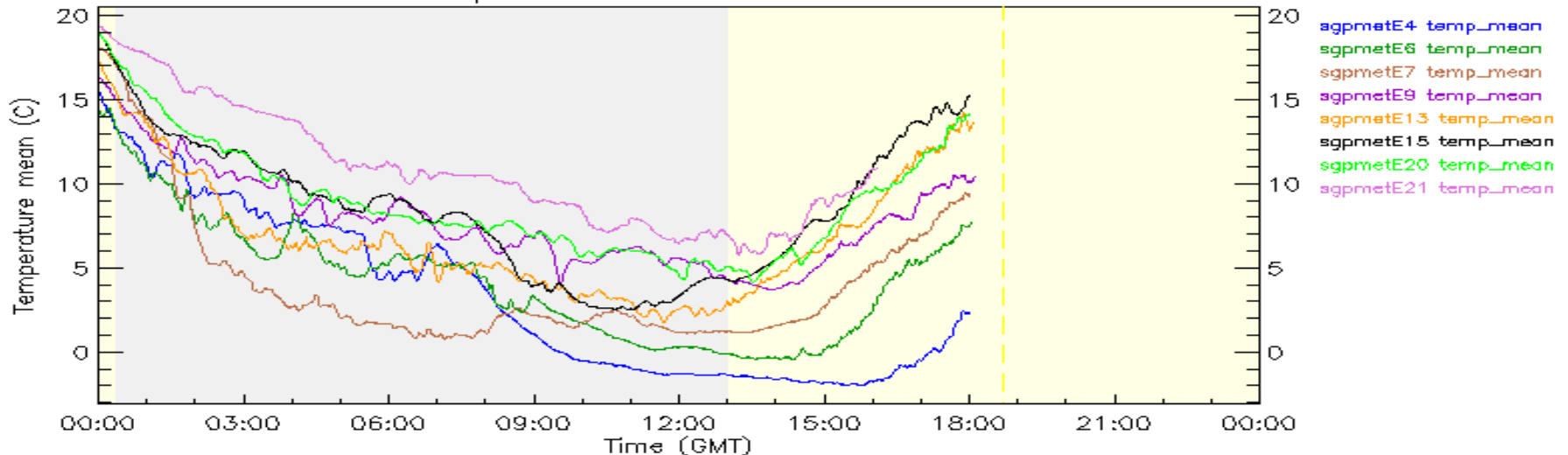
U.S. DEPARTMENT OF
ENERGY

Office of
Science

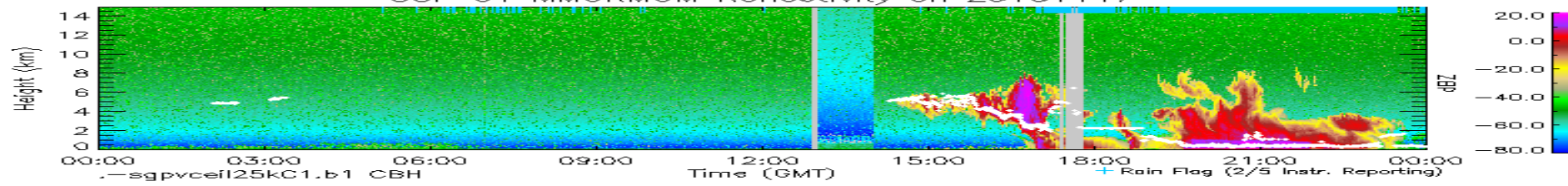
Generic Time Series Examples



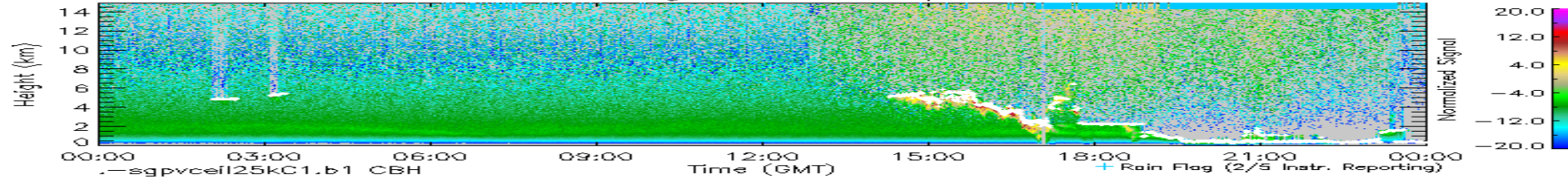
SGP MET Temperature mean vs Time for 20110302



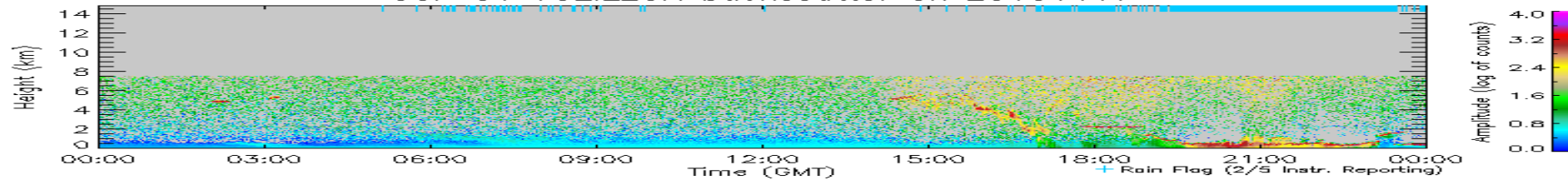
SGP C1 MMCRMOM Reflectivity on 20101117



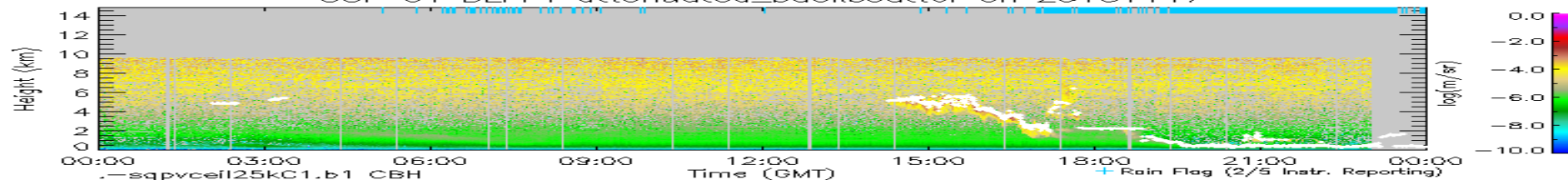
SGP C1 MPLPOLFS signal_return_co_pol on 20101117



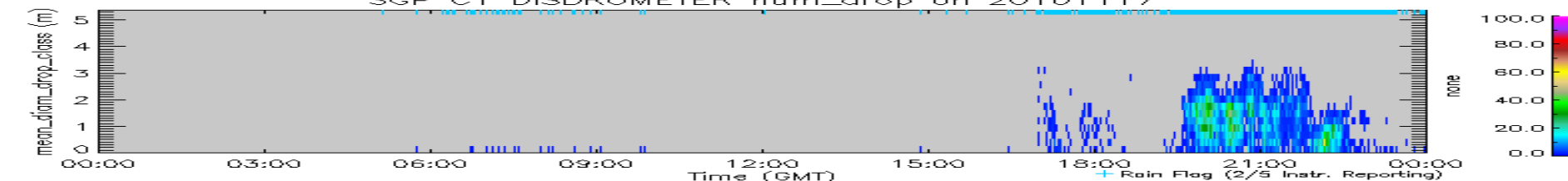
SGP C1 VCEIL25K backscatter on 20101117



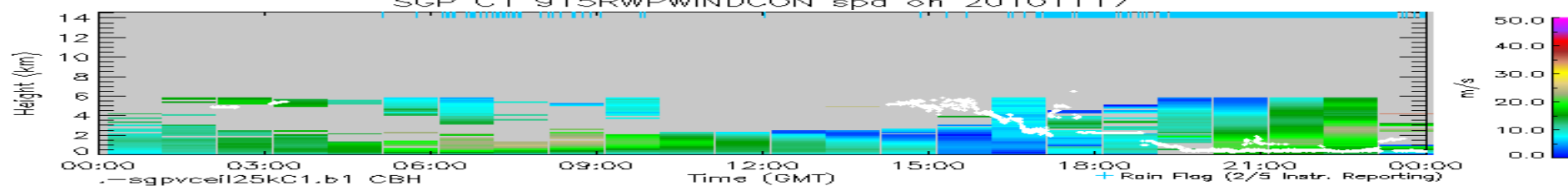
SGP C1 DLFPT attenuated_backscatter on 20101117

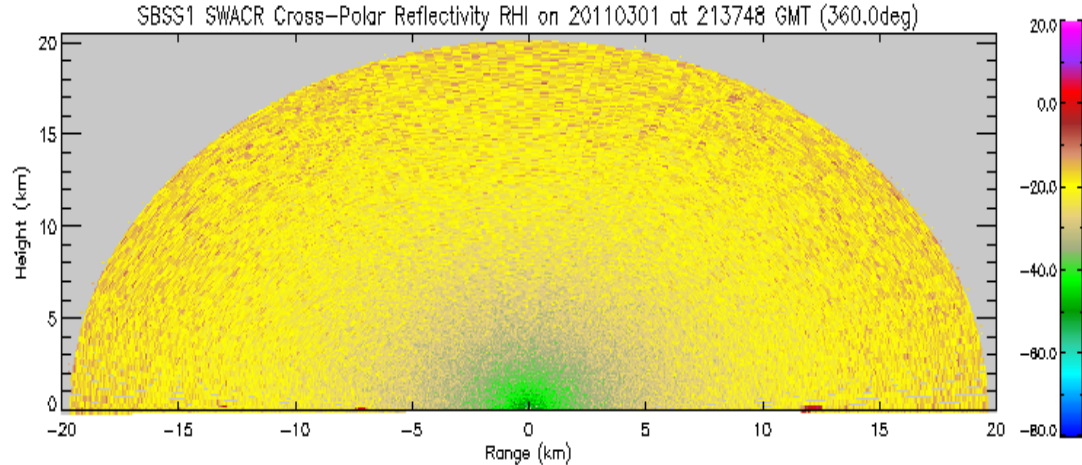
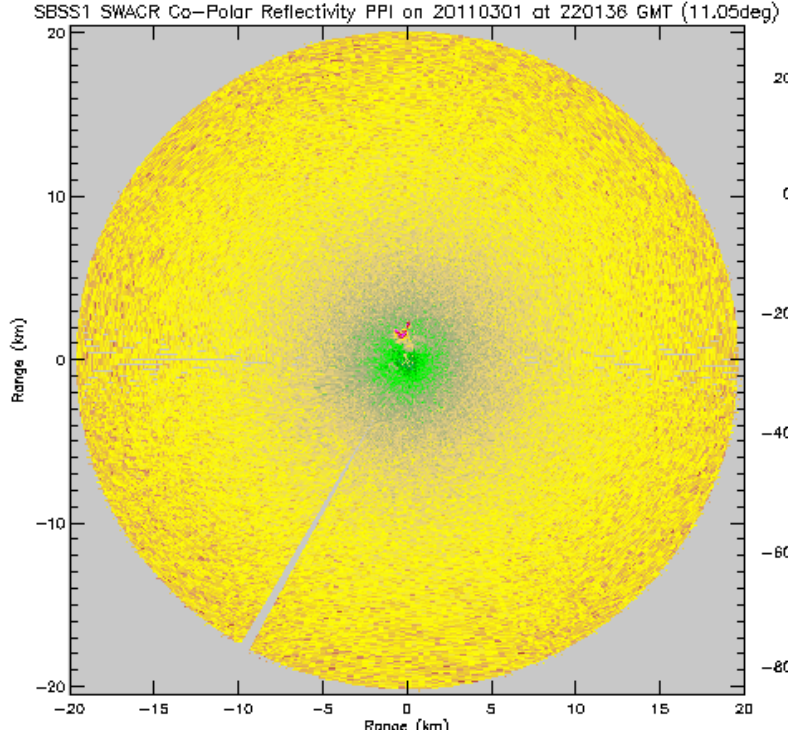


SGP C1 DISDROMETER num_drop on 20101117

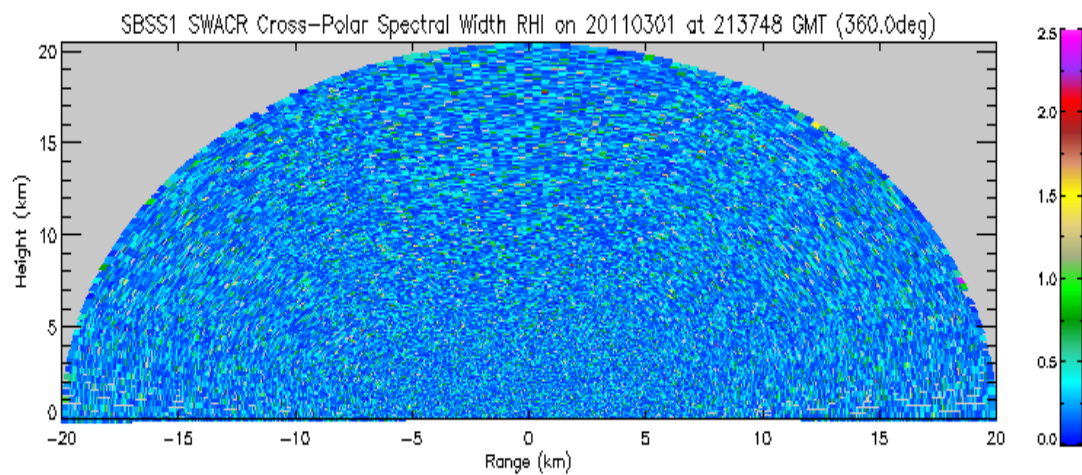
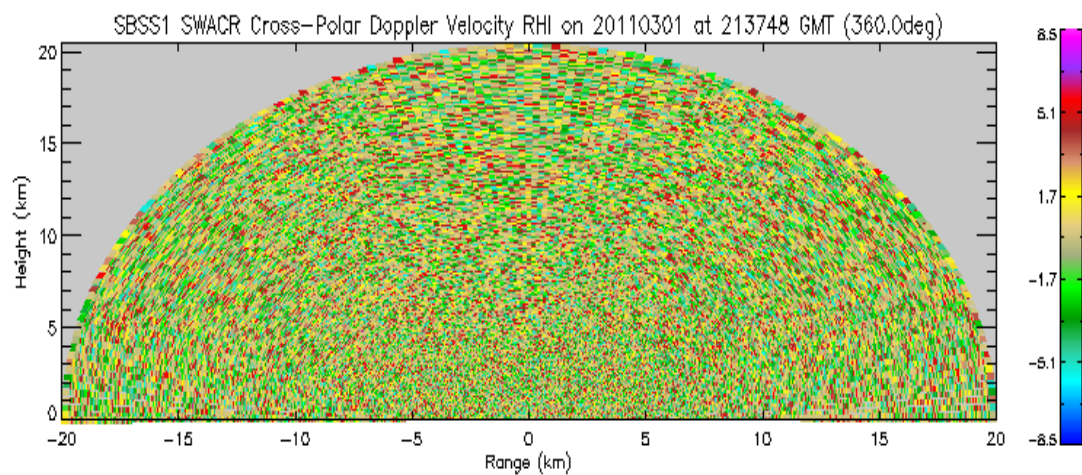
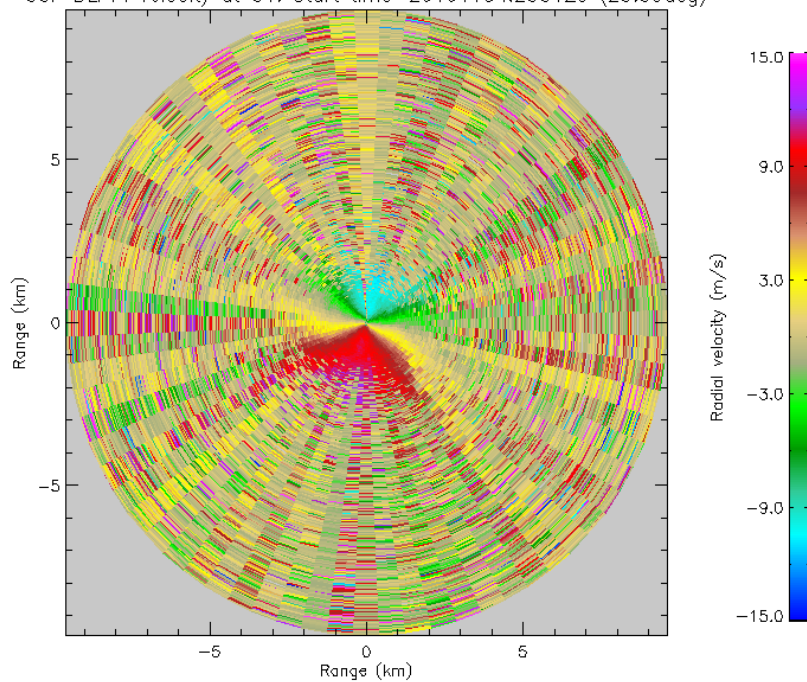


SGP C1 915RWPWINDCON spd on 20101117





SGP DLPIPI Velocity at C1: Start time=20101104.233120 (23.99deg)





Questions?

Any suggestions can be sent to

atheisen@ou.edu