



# Northeast (NE) Multispecies Information Sheet Closed Area Regulations



*This summary provides a broad overview of restrictions and requirements; it is not a substitute for the regulations. You must read the regulations in conjunction with this information sheet to fully understand how this fishery is managed. This information sheet will be updated when regulations are revised. The regulations summarized here may be found at 50 CFR 648.81.*

This information sheet summarizes the NE multispecies regulations pertaining to:

Transiting Regulations and Gear Stowage Requirements.....	1
Gulf of Maine (GOM) Rolling Closures.....	2-6
Georges Bank (GB) Seasonal Closure.....	7
Year-Round Closed Areas.....	8-9
Essential Fish Habitat (EFH) Closed Areas.....	10-11
Restricted Gear Areas (RGA).....	11-16
GOM Whaleback Spawning Cod Closure.....	17

## **TRANSITING REGULATIONS**

A vessel may transit Closed Area (CA) I, the Nantucket Lightship Closed Area (NLCA), the Cashes Ledge Closed Area, the Western GOM Closed Area, the GOM Rolling Closures, the GB Seasonal Closure Area, and the EFH Closure Areas, provided that its gear is stowed in accordance with the regulations summarized below.

A vessel may transit CA II for valid and compelling safety reasons or when lawfully fishing in the U.S./Canada Management Area, provided fishing gear is stored in accordance with the regulations summarized below.

## **GEAR STOWAGE REQUIREMENTS**

For gear to be considered legally stowed for the purpose of transiting a closed area, a vessel must meet one or more of the following requirements to show that their gear is not available for immediate use and has not been in recent use:

### **TRAWL GEAR**

- **A net stowed below deck:** The net is stored below the main working deck from which the net is deployed and retrieved; the towing wires, including the leg wires, are detached from the net; and it is fan-folded (flaked) and bound around its circumference.
- **A net stowed and lashed down on deck:** Provided it is fan-folded (flaked) and bound around its circumference; it is securely fastened to the deck or rail of the vessel; and the towing wires, including the leg wires, are detached from the net.
- **On-reel stowage for vessels transiting seasonal closure areas:** A net that is on a reel and is covered and secured, provided: The entire surface of the net is covered with canvas or other similar opaque material that is securely bound; the towing wires are detached from the doors; and no containment rope, codend tripping device, or other mechanism to close off the codend is attached to the codend.
- **On-reel stowage for vessels transiting the permanent closure areas:** A net that is on a reel and is covered and secured, provided: The entire surface of the net is covered with canvas or other similar opaque material that is securely bound; the towing wires are detached from the net; and the codend is removed and stored below deck.

### **SCALLOP DREDGES**

- The towing wire is detached from the dredge and attached to a bright-colored poly ball no less than 24 inches (60.9 cm) in diameter, with the towing wire left in its normal operating position (through the various blocks) and either is wound back to the first block (in the gallows) or is suspended at the end of the lifting block where its retrieval does not present a hazard to the crew and where it is readily visible from above, or, the towing wire is detached from the scallop dredge, reeled up onto the winch, and the dredge is secured and covered so that it is rendered unusable for fishing

### **HOOK GEAR**

- All anchors and buoys are secured and all hook gear, including jigging machines, is covered.

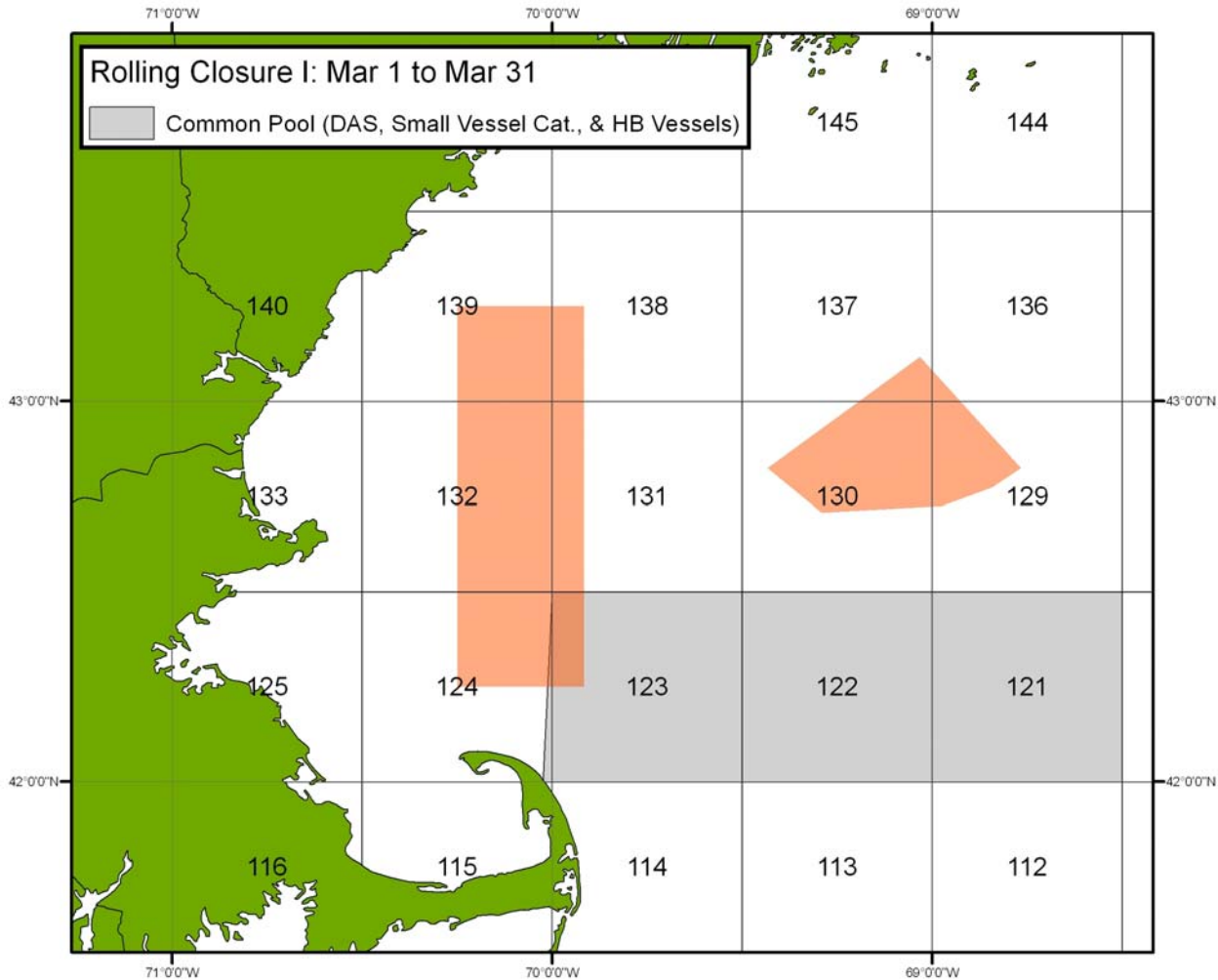
### **SINK GILLNET GEAR**

- All nets are covered with canvas or other similar material and lashed or otherwise securely fastened to the deck or rail, and all buoys larger than 6 inches in diameter, high flyers, and anchors are disconnected.

## GOM ROLLING CLOSURE AREAS

The GOM Rolling Closure Areas (RCAs) depicted below are closed to all fishing vessels with the following exemptions: Vessels that are transiting, vessels that do not have a Federal NE multispecies permit and are fishing exclusively in state waters; charter and party vessels\*; recreational vessels; vessels fishing with exempted gears (spears, rakes, diving gear, cast nets, tongs, harpoons, weirs, dip nets, stop nets, pound nets, pots and traps, purse seines, surf clam/quahog dredge gear, pelagic hook and line, pelagic longlines, single pelagic gillnets, shrimp trawls (with properly configured grates)); vessels participating in the mid-water trawl exempted fishery; and sea scallop dredge gear when under a scallop day-at-sea (DAS), vessels lawfully in a scallop dredge exemption area, or vessels participating in the Raised Footrope Trawl Exempted Whiting Fishery.

\*Charter and party vessels may fish in the GOM RCAs provided they have a Letter of Authorization (LOA) from the Regional Administrator to enter or fish in these areas (additional requirements also apply). An LOA may be obtained by calling the Permit Office at 978-281-9370.

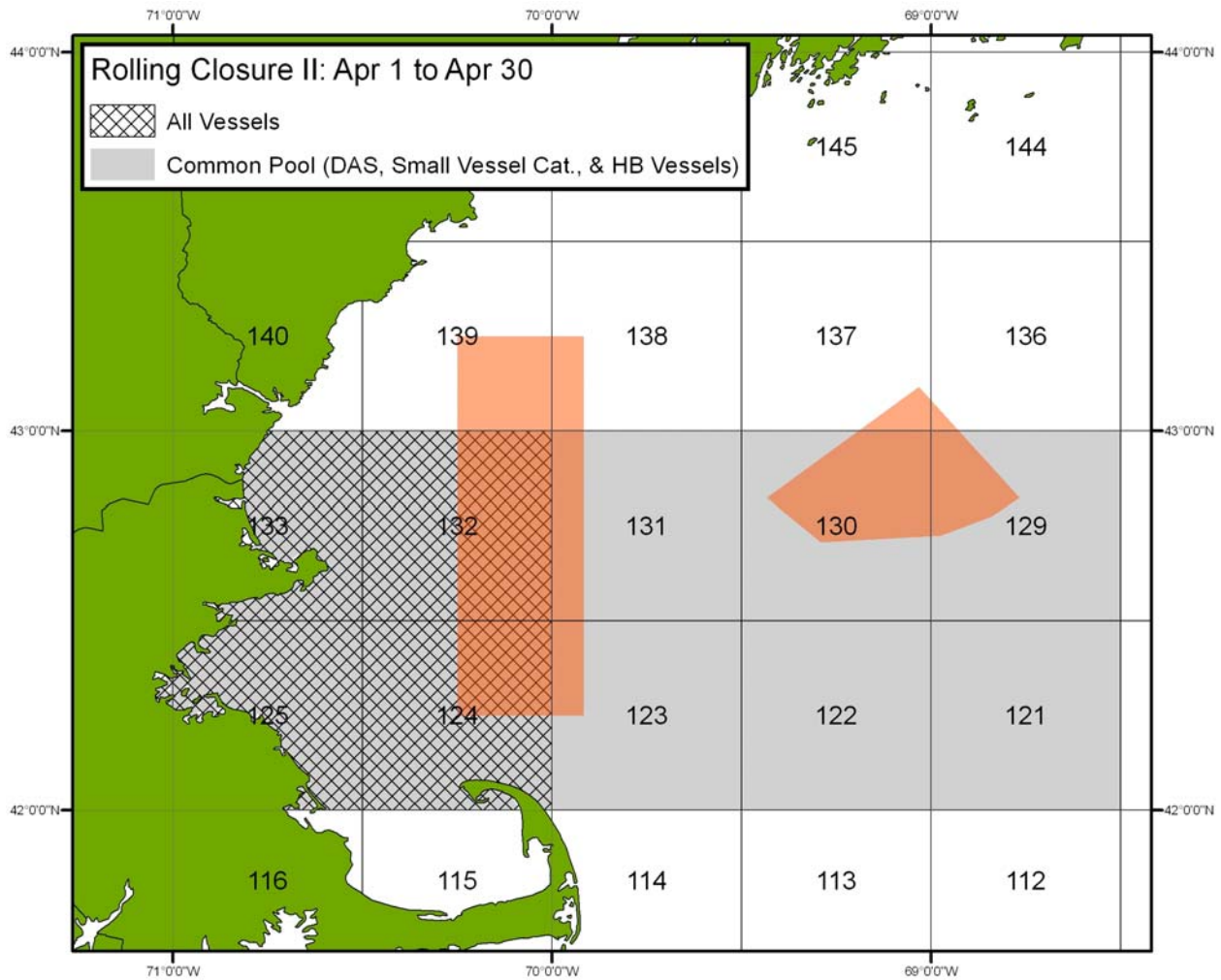


RCA I is defined by straight lines connecting the following points in the order stated:

RCA I - Common Pool (DAS, Small Vessel, & HB)

Point	N. Lat.	W. Long.
GM3	42° 00'	(1)
GM5	42° 00'	68° 30'
GM6	42° 30'	68° 30'
GM23	42° 30'	70° 00'
GM3	42° 00'	(1)

(1) Cape Cod Shoreline on the Atlantic Ocean



Rolling Closure Area II is defined by straight lines connecting the following points in the order stated:

RCA II – Common Pool (DAS, Small Vessel, & HB)

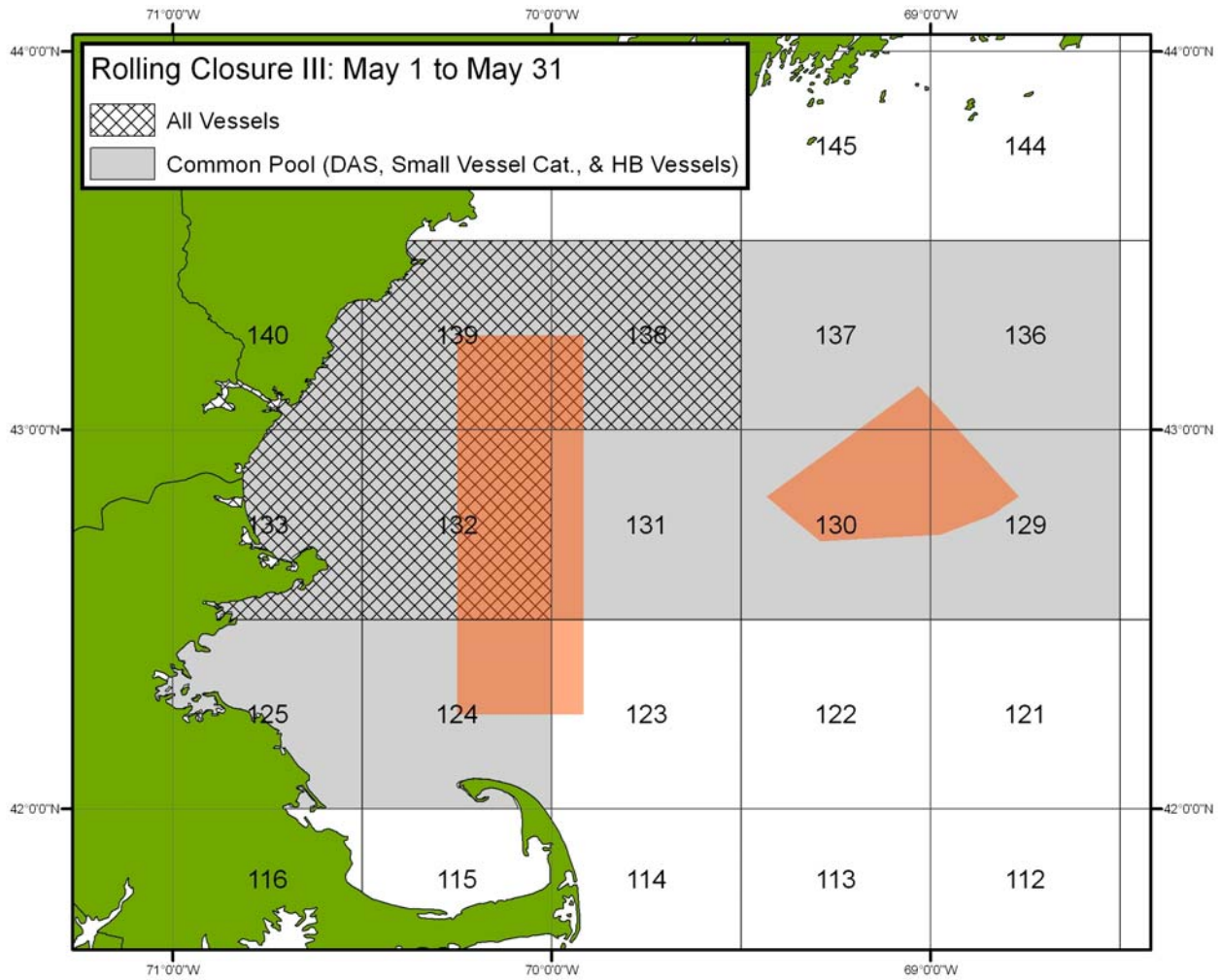
Point	N. Lat.	W. Long.
GM1	42° 00'	(1)
GM2	42° 00'	(2)
GM3	42° 00'	(3)
GM5	42° 00'	68° 30'
GM13	43° 00'	68° 30'
GM9	43° 00'	(4)
GM1	42° 00'	(1)

- (1) Massachusetts shoreline
- (2) Cape Cod shoreline on Cape Cod Bay
- (3) Cape Cod shoreline on the Atlantic Ocean
- (4) New Hampshire shoreline

RCA II – All Vessels

Point	N. Lat.	W. Long.
1	42° 00'	(1)
2	42° 00'	(2)
3	42° 00'	(3)
4	42° 00'	70° 00'
5	43° 00'	70° 00'
6	43° 00'	(4)

- (1) Massachusetts shoreline
- (2) Cape Cod shoreline on Cape Cod Bay
- (3) Cape Cod shoreline on the Atlantic Ocean
- (4) New Hampshire shoreline



RCA III is defined by straight lines connecting the following points in the order stated:

RCA III – Common Pool (DAS, Small Vessel, & HB)

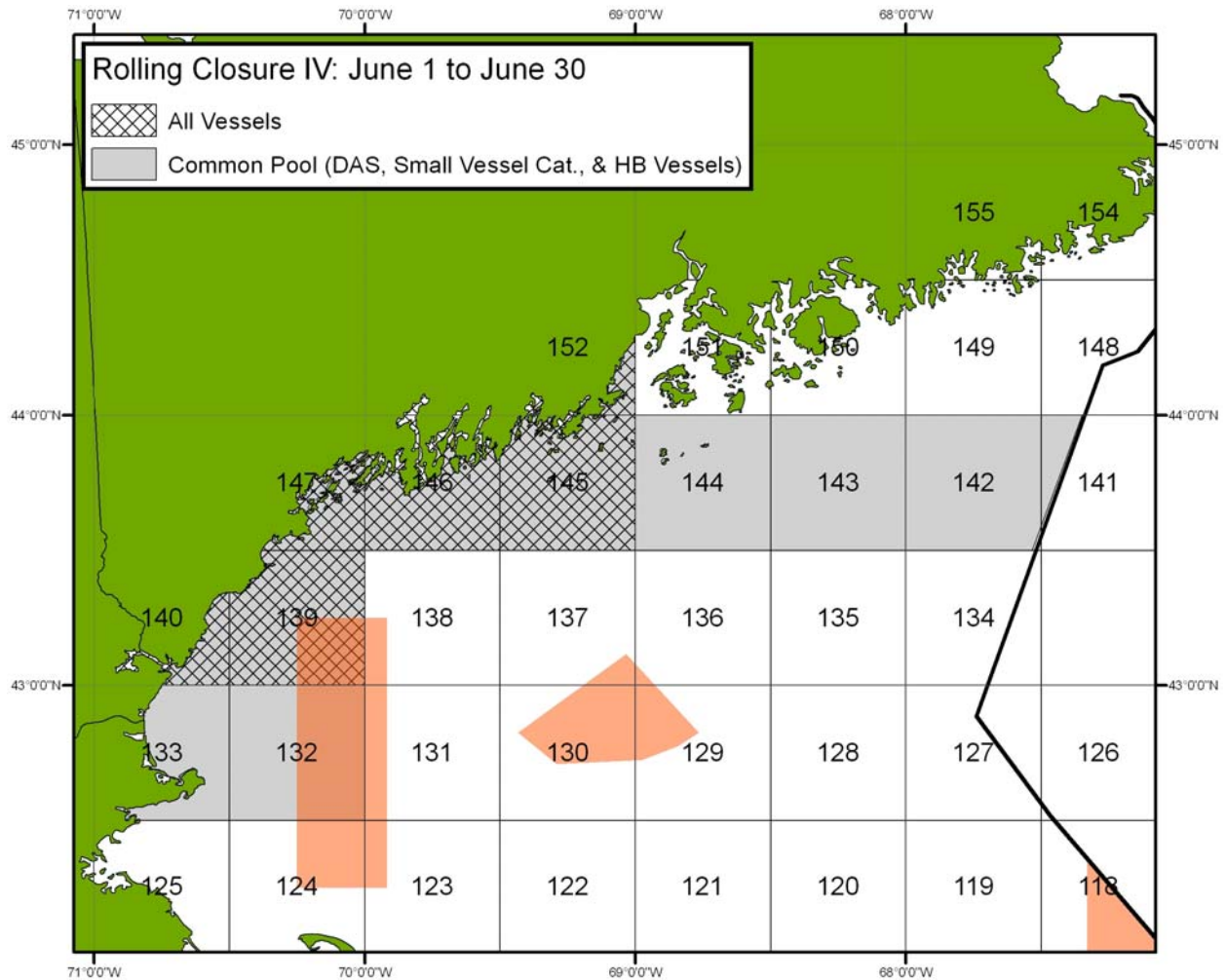
Point	N. Lat.	W. Long.
GM1	42° 00'	(1)
GM2	42° 00'	(2)
GM3	42° 00'	(3)
GM4	42° 00'	70° 00'
GM23	42° 30'	70° 00'
GM6	42° 30'	68° 30'
GM14	43° 30'	68° 30'
GM10	43° 30'	(4)
GM1	42° 00'	(1)

RCA III - All Vessels

Point	N. Lat.	W. Long.
1	42° 30'	(1)
2	42° 30'	70° 00'
3	43° 00'	70° 00'
4	43° 00'	69° 30'
5	43° 30'	69° 30'
6	43° 30'	(2)

- (1) Massachusetts shoreline
- (2) Maine shoreline

- (1) Massachusetts shoreline
- (2) Cape Cod shoreline on Cape Cod Bay
- (3) Cape Cod shoreline on the Atlantic Ocean
- (4) Maine shoreline



RCA IV is defined by straight lines connecting the following points in the order stated:

RCA IV – Common Pool (DAS, Small Vessel, & HB)

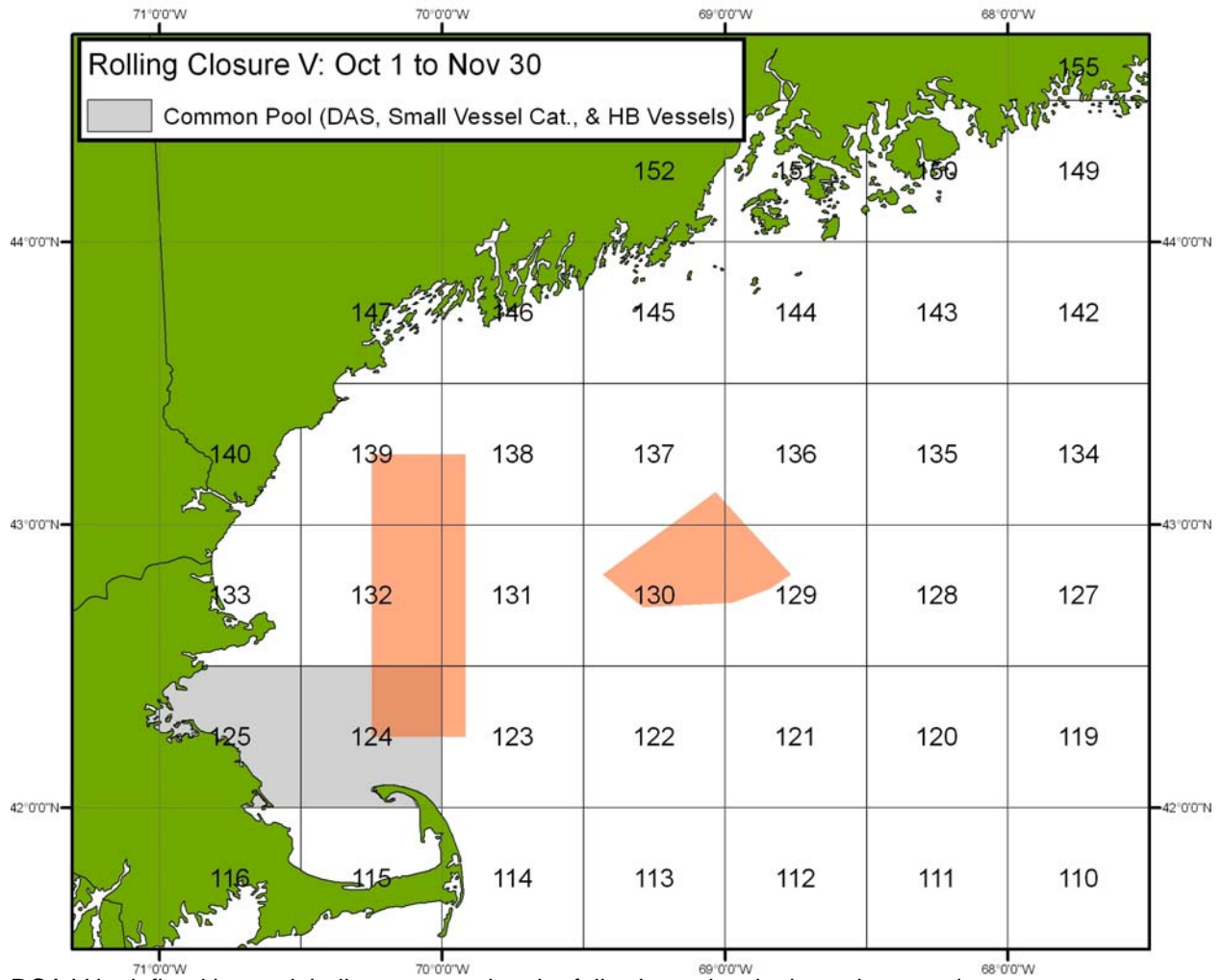
Point	N. Lat.	W. Long.
GM9	42° 30'	(1)
GM23	42° 30'	70° 00'
GM17	43° 30'	70° 00'
GM19	43° 30'	67° 32' or (2)
GM20	44° 00'	67° 21' or (2)
GM21	44° 00'	69° 00'
GM22	(3)	69° 00'
GM9	42° 30'	(1)

- (1) Massachusetts shoreline
- (2) U.S. - Canada maritime boundary
- (3) Maine shoreline

RCA IV - All Vessels

Point	N. Lat.	W. Long.
1	43° 00'	(1)
2	43° 00'	70° 00'
3	43° 30'	70° 00'
4	43° 30'	69° 00'
5	(2)	69° 00'

- (1) New Hampshire shoreline
- (2) Maine shoreline



RCA V is defined by straight lines connecting the following points in the order stated:

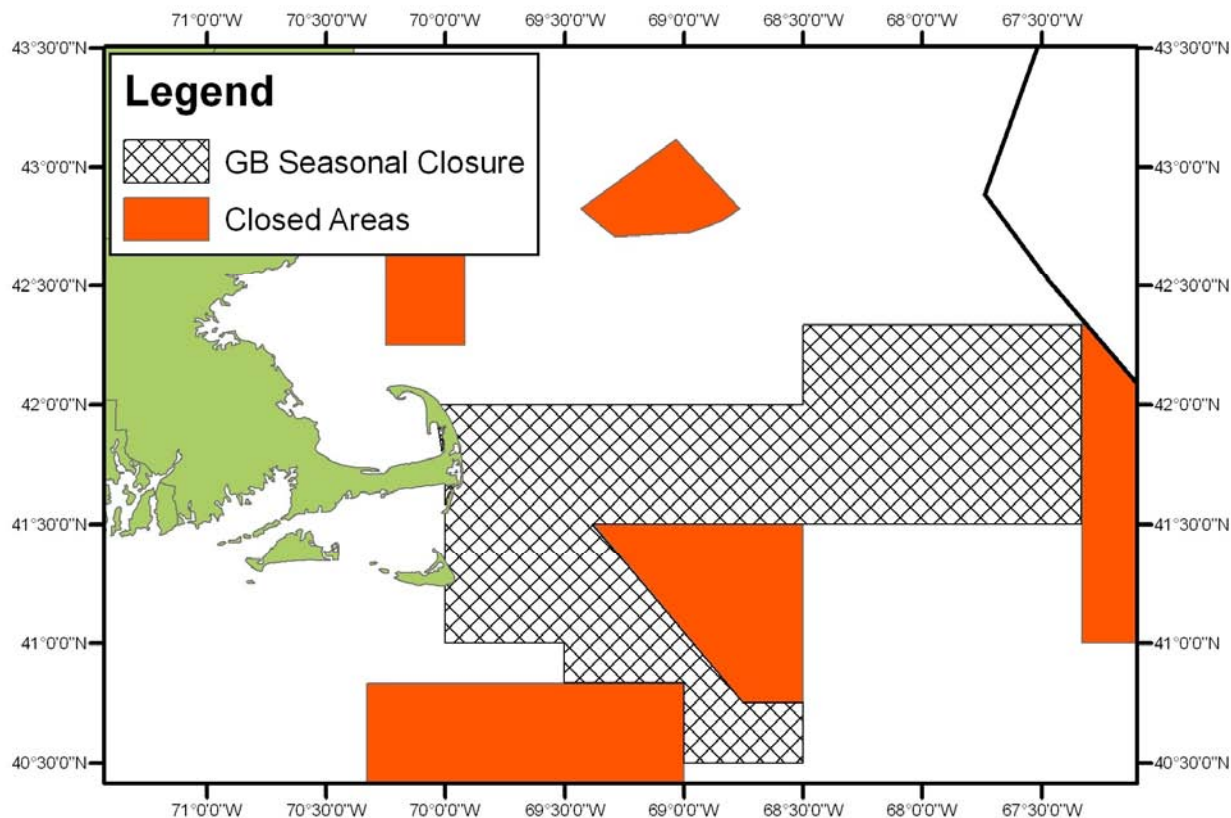
RCA V - Common Pool (DAS, Small Vessel, & HB)

Point	N. Lat.	W. Long.
GM1	42° 00'	(1)
GM2	42° 00'	(2)
GM3	42° 00'	(3)
GM4	42° 00'	70° 00'
GM8	42° 30'	70° 00'
GM9	42° 30'	(1)
GM1	42° 00'	(1)

- (1) Massachusetts shoreline
- (2) Cape Cod shoreline on Cape Cod Bay
- (3) Cape Cod shoreline on the Atlantic Ocean

## GEORGES BANK (GB) SEASONAL CLOSURE AREA

The GB Seasonal Closure Area is closed from May 1 to May 31 to all fishing vessels with the following exemptions: sector vessels; vessels fishing under a Handgear A or Handgear B permit in the in the common pool; vessels that do not have a Federal NE multispecies permit and are fishing exclusively in state waters; charter and party vessels; recreational vessels; vessels fishing with spears, rakes, diving gear, cast nets, tongs, harpoons, weirs, dip nets, stop nets, pound nets, pots and traps, purse seines, mid-water trawls, surf clam/quahog dredge gear, pelagic hook and line, pelagic longlines, single pelagic gillnets, shrimp trawls (with properly configured grates); and sea scallop dredge gear when under a scallop day-at-sea (DAS), or lawfully in a scallop dredge exemption area provided that the vessel uses a 10-inch or greater twine top and complies with other applicable NE multispecies possession limits.



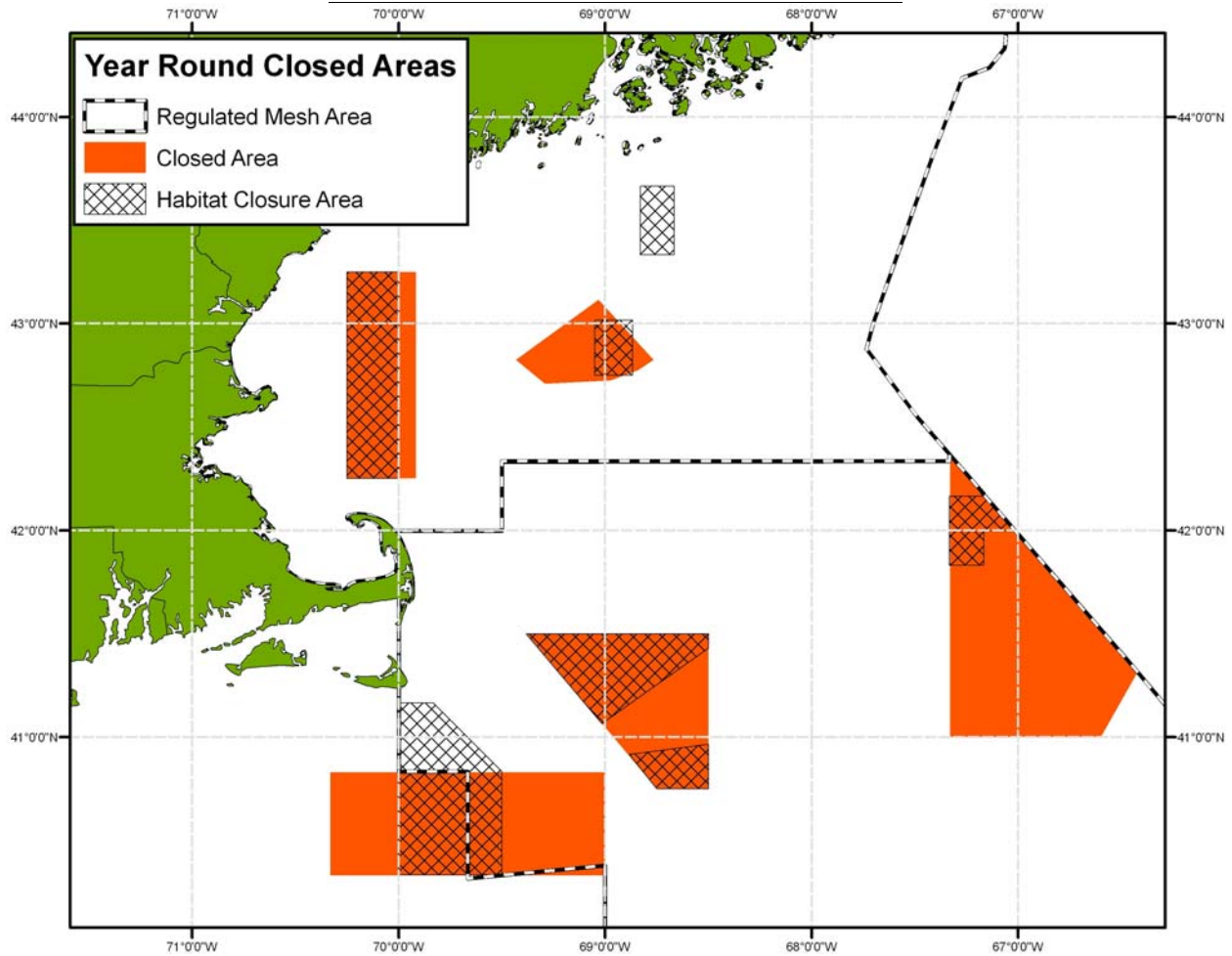
The GB Seasonal Closure Area is defined by straight lines connecting the following points in the order stated:

GB Seasonal Closure Area

Point	N. Lat.	W. Long.
GB1	42° 00'	(1)
GB2	42° 00'	68° 30'
GB3	42° 20'	68° 30'
GB4	42° 20'	67° 20'
GB5	41° 30'	67° 20'
CL1	41° 30'	69° 23'
CL2	40° 45'	68° 45'
CL3	40° 45'	68° 30'
GB6	40° 30'	68° 30'
GB7	40° 30'	69° 00'
G10	40° 50'	69° 00'
GB8	40° 50'	69° 30'
GB9	41° 00'	69° 30'
GB10	41° 00'	70° 00'
G12	(1)	70° 00'

(1) Northward to its intersection with the shoreline of Mainland Massachusetts

## YEAR-ROUND GROUNDFISH CLOSED AREAS



### WESTERN GOM AND CASHES LEDGE

The Western GOM and Cashes Ledge Closure Areas depicted above are closed year-round to all fishing vessels, with the following exemptions: Charter and party\* or recreational vessels; vessels fishing with exempted gears (spears, rakes, diving gear, cast nets, tongs, harpoons, weirs, dip nets, stop nets, pound nets, pots and traps, purse seines, surf clam/quahog dredge gear, pelagic hook and line, pelagic longlines, single pelagic gillnets, and shrimp trawls (with properly configured grates)); and vessels participating in the mid-water trawl exempted fishery.

\*Charter and party vessels may fish in the Western GOM and Cashes Ledge Closure Areas provided they have a Letter of Authorization (LOA) from the Regional Administrator to enter or fish in these areas (additional requirements also apply). An LOA may be obtained by calling the Permit Office at 978-281-9370.

The Western GOM Closure Area and the Cashes Ledge Closure Area, respectively, are defined by straight lines connecting the following points in the order stated:

Western GOM Closure Area

Point	N. Lat.	W. Long.
WGM1	42° 15'	70° 15'
WGM2	42° 15'	69° 55'
WGM3	43° 15'	69° 55'
WGM4	43° 15'	70° 15'
WGM1	42° 15'	70° 15'

Cashes Ledge Closure Area

Point	N. Lat.	W. Long.
CL1	43° 07'	69° 02'
CL2	42° 49.5'	68° 46'
CL3	42° 46.5'	68° 50.5'
CL4	42° 43.5'	68° 58.5'
CL5	42° 42.5'	69° 17.5'
CL6	42° 49.5'	69° 26'
CL1	43° 07'	69° 02'



CA I, CA II, AND NLCA

The following applies to the CA I, CA II, and the NLCA. Unless further restricted under the EFH Closure areas, these areas are closed year-round to all fishing vessels, with the following exceptions: Vessels fishing with or using pot gear designed to take lobsters or hagfish, pelagic hook and line gear, pelagic longline gear, harpoon gear, tuna purse seine, pelagic mid-water trawl gear\*, and tuna purse seine gear, provided no regulated species are kept and no other gear capable of catching NE multispecies is on board. Additional area exemptions are identified below under the respective closures.

\*Vessels using mid-water trawl gear must have on board a LOA issued by the Regional Administrator. Mid-water trawl vessels are issued a LOA for a minimum of 7 days. The vessel can be issued LOAs for the midwater trawl exempted fishery and the purse seine exempted fishery at the same time. An LOA may be obtained by calling the Permit Office at 978-281-9370.

CA I – In addition to the exemptions summarized in the first paragraph of this section the following vessels are also exempt from CA I: Vessels participating in a NE multispecies Special Access Program (SAP) and vessels fishing for scallops in the CA I Access Area. CA I is defined by straight lines connecting the following points in the order stated:

CA I

Point	N. Lat.	W. Long.
C11	41° 30'	69° 23'
C12	40° 45'	68° 45'
C13	40° 45'	68° 30'
C14	41° 30'	68° 30'
C11	41° 30'	69° 23'

CA II – In addition to the exemptions summarized in the first paragraph of this section the following vessels are also exempt from CA II: Vessels fishing in a groundfish special access program (SAP) or scallop access program in compliance with the regulations. CA II is defined by straight lines connecting the following points in the order stated:

CA II

Point	N. Lat.	W. Long.
CII1	41° 00'	67° 20'
CII2	41° 00'	66° 35.8' *
G5	41° 18.6'	66° 24.8' *
CII3	42° 22'	67° 20'
CII1	41° 00'	67° 20'

\*The U.S.-Canada maritime boundary

NLCA – In addition to the exemptions summarized in the first paragraph of this section the following vessels are also exempt from the NLCA: Scallop vessels fishing in the Nantucket Lightship Access Area, vessels fishing with surfclam or ocean quahog dredge gear, and charter/party or recreational vessels. Charter and party vessels may fish in the NLCA provided they have an LOA from the Regional Administrator to enter or fish in the area (additional requirements also apply). An LOA may be obtained by calling the Permit Office at 978-281-9370.

Nantucket Lightship Closed Area

Point	N. Lat.	W. Long.
G10	40° 50'	69° 00'
CN1	40° 20'	69° 00'
CN2	40° 20'	70° 20'
CN3	40° 50'	70° 20'
G10	40° 50'	69° 00'

## YEAR-ROUND ESSENTIAL FISH HABITAT (EFH) CLOSURE AREAS

EFH Closure Areas (see chart on page 8) are closed year-round to all bottom-tending mobile gears. Bottom-tending mobile gear is defined as the following: Gear in contact with the ocean bottom, and towed from a vessel, which is moved through the water during fishing in order to capture fish, and includes otter trawls, beam trawls, hydraulic dredges, non-hydraulic dredges, and seines (with the exception of a purse seine). The Western GOM Habitat Closure Area is defined by straight lines connecting the following points in the order stated:

Western GOM Habitat Closure Area

Point	N. Lat.	W. Long.
WGM4	43° 15'	70° 15'
WGM1	42° 15'	70° 15'
WGM5	42° 15'	70° 00'
WGM6	43° 15'	70° 00'
WGM4	43° 15'	70° 15'

The Cashes Ledge Habitat Closure Area is defined by straight lines connecting the following points in the order stated:

Cashes Ledge Habitat Closure Area

Point	N. Lat.	W. Long.
CLH1	43° 01'	69° 03'
CLH2	43° 01'	68° 52'
CLH3	42° 45'	68° 52'
CLH4	42° 45'	69° 03'
CLH1	43° 01'	69° 03'

The Jeffrey's Bank Habitat Closure Area is defined by straight lines connecting the following points in the order stated:

Jeffrey's Bank Habitat Closure Area

Point	N. Lat.	W. Long.
JB1	43° 40'	68° 50'
JB2	43° 40'	68° 40'
JB3	43° 20'	68° 40'
JB4	43° 20'	68° 50'
JB1	43° 40'	68° 50'

The CA I North Habitat Closure Area is defined by straight lines connecting the following points in the order stated:

CA I North Habitat Closure Area

Point	N. Lat.	W. Long.
CI1	41° 30'	69° 23'
CI4	41° 30'	68° 30'
CIH1	41° 26'	68° 30'
CIH2	41° 04'	69° 01'
CI1	41° 30'	69° 23'

The CA I South Habitat Closure Area is defined by straight lines connecting the following points in the order stated:

CA I South Habitat Closure Area

Point	N. Lat.	W. Long.
CIH3	40° 55'	68° 53'
CIH4	40° 58'	68° 30'
CI3	40° 45'	68° 30'
CI2	40° 45'	68° 45'
CIH3	40° 55'	68° 53'

The CA II Habitat Closure Area is defined by straight lines connecting the following points in the order stated:

CA II Habitat Closure Area

Point	N. Lat.	W. Long.
CIIH1	42° 10'	67° 20'
CIIH2	42° 10'	67° 9.3'
CIIH3	42° 00'	67° 0.5'
CIIH4	42° 00'	67° 10'
CIIH5	41° 50'	67° 10'
CIIH6	41° 50'	67° 20'
CIIH1	42° 10'	67° 20'

The Nantucket Lightship Habitat Closure Area is defined by straight lines connecting the following points in the order stated:

Nantucket Lightship Habitat Closure Area

Point	N. Lat.	W. Long.
NLH1	41° 10'	70° 00'
NLH2	41° 10'	69° 50'
NLH3	40° 50'	69° 30'
NLH4	40° 20'	69° 30'
NLH5	40° 20'	70° 00'
NLH1	41° 10'	70° 00'

**RESTRICTED GEAR AREAS (RGAs)**

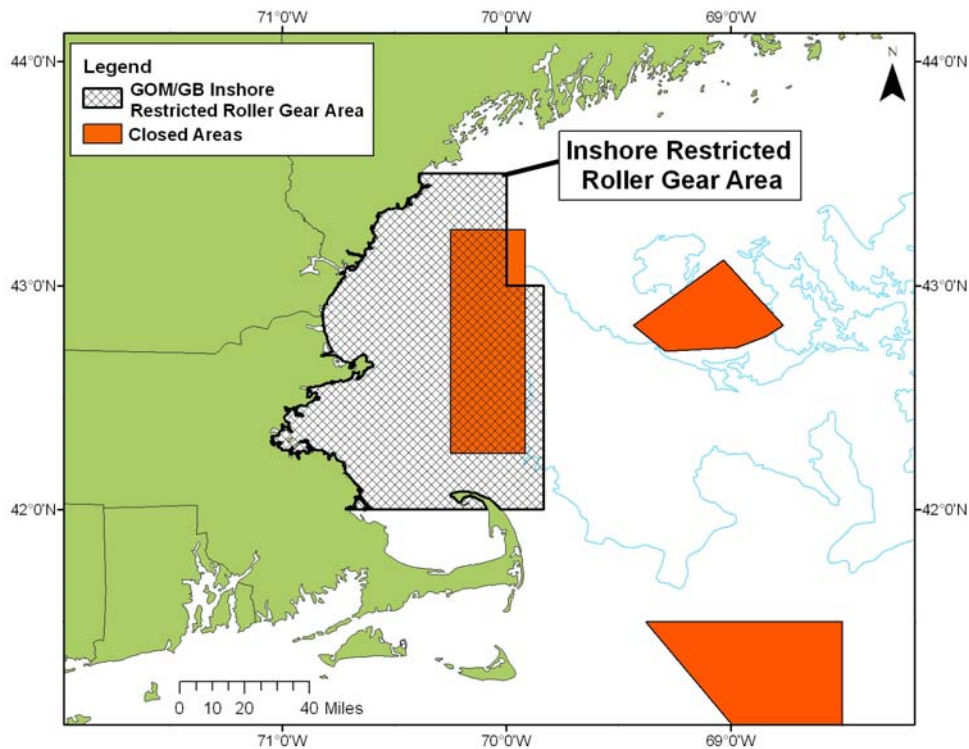
**INSHORE RESTRICTED ROLLER GEAR AREA**

For all trawl vessels fishing in the GOM/GB Inshore Restricted Roller Gear Area, the maximum diameter of any part of the trawl footrope, including discs, rollers or rockhoppers, may not exceed 12 inches. The area is defined by straight lines connecting the following points in the order stated:

Inshore Restricted Roller Gear Area

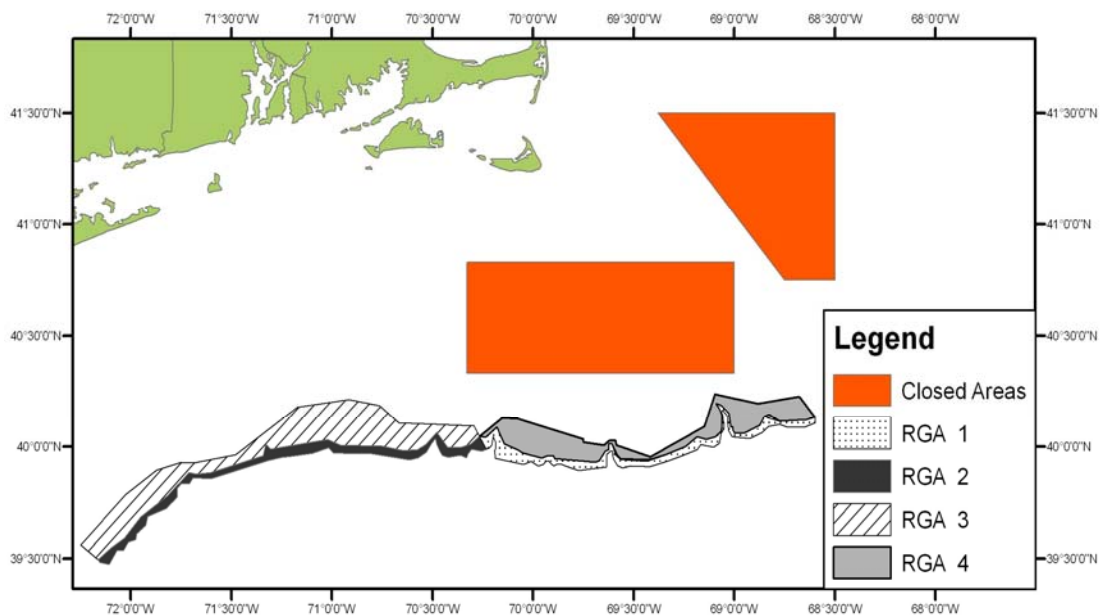
Point	N. Lat.	W. Long.
GM1	42° 00'	(1)
GM2	42° 00'	(2)
GM3	42° 00'	(3)
GM23	42° 00'	69° 50'
GM24	43° 00'	69° 50'
GM11	43° 00'	70° 00'
GM17	43° 30'	70° 00'
GM18	43° 30'	(4)

- (1) Massachusetts shoreline
- (2) Cape Cod shoreline on Cape Cod Bay
- (3) Cape Cod shoreline on the Atlantic Ocean
- (4) Maine shoreline



**MOBILE GEAR AND LOBSTER TRAP/POT RGAs**

The following summarizes measures to separate mobile gear and lobster trap/pot gear in time and area according to the schedule below. Mobile gear vessels may transit the areas when closed, provided that all mobile gear is on board the vessel while inside the area.



Mobile Gear and Lobster Trap/Pot RGAs		
RGA	Closed to mobile gear	Closed to trap/pot gear
I	October 1 - June 15	June 16 – September 30
II	November 27 - June 15	June 16 – November 26
III	June 16 - November 26	January 1 – April 30
IV	June 16 - September 30	No closure

**Mobile Gear and Lobster Trap/Pot RGA**

RGA	Closed to mobile gear	Closed to trap/pot gear
I	October 1 - June 15	June 16 – September 30

Inshore Boundary		
Point	Latitude	Longitude
To 120		
69	40° 07.9'	68° 36.0'
70	40° 07.2'	68° 38.4'
71	40° 06.9'	68° 46.5'
72	40° 08.7'	68° 49.6'
73	40° 08.1'	68° 51.0'
74	40° 05.7'	68° 52.4'
75	40° 03.6'	68° 57.2'
76	40° 03.65'	69° 00.0'
77	40° 04.35'	69° 00.5'
78	40° 05.2'	69° 00.5'
79	40° 05.3'	69° 01.1'
80	40° 08.9'	69° 01.75'
81	40° 11.0'	69° 03.8'
82	40° 11.6'	69° 05.4'
83	40° 10.25'	69° 04.4'
84	40° 09.75'	69° 04.15'
85	40° 08.45'	69° 03.6'
86	40° 05.65'	69° 03.55'
87	40° 04.1'	69° 03.9'
88	40° 02.65'	69° 05.6'
89	40° 02.00'	69° 08.35'
90	40° 02.65'	69° 11.15'
91	40° 00.05'	69° 14.6'
92	39° 57.8'	69° 20.35'
93	39° 56.65'	69° 24.4'
94	39° 56.1'	69° 26.35'
95	39° 56.55'	69° 34.1'
96	39° 57.85'	69° 35.5'
97	40° 00.65'	69° 36.5'
98	40° 00.9'	69° 37.3'
99	39° 59.15'	69° 37.3'
100	39° 58.8'	69° 38.45'
102	39° 56.2'	69° 40.2'
103	39° 55.75'	69° 41.4'
104	39° 56.7'	69° 53.6'
105	39° 57.55'	69° 54.05'
106	39° 57.4'	69° 55.9'
107	39° 56.9'	69° 57.45'
108	39° 58.25'	70° 03.0'
110	39° 59.2'	70° 04.9'
111	40° 00.7'	70° 08.7'
112	40° 03.75'	70° 10.15'
115	40° 05.2'	70° 10.9'
116	40° 02.45'	70° 14.1'
119	40° 02.75'	70° 16.1'
To 181		

Offshore Boundary		
Point	Latitude	Longitude
To 69		
120	40° 06.4'	68° 35.8'
121	40° 05.25'	68° 39.3'
122	40° 05.4'	68° 44.5'
123	40° 06.0'	68° 46.5'
124	40° 07.4'	68° 49.6'
125	40° 05.55'	68° 49.8'
126	40° 03.9'	68° 51.7'
127	40° 02.25'	68° 55.4'
128	40° 02.6'	69° 00.0'
129	40° 02.75'	69° 00.75'
130	40° 04.2'	69° 01.75'
131	40° 06.15'	69° 01.95'
132	40° 07.25'	69° 02.0'
133	40° 08.5'	69° 02.25'
134	40° 09.2'	69° 03.3'
135	40° 09.75'	69° 03.3'
136	40° 09.55'	69° 03.85'
137	40° 08.4'	69° 03.4'
138	40° 07.2'	69° 03.3'
139	40° 06.0'	69° 03.1'
140	40° 05.4'	69° 03.5'
141	40° 04.8'	69° 03.05'
142	40° 03.55'	69° 03.55'
143	40° 01.9'	69° 03.95'
144	40° 01.0'	69° 04.4'
146	39° 59.9'	69° 06.25'
147	40° 00.6'	69° 10.5'
148	39° 59.25'	69° 11.15'
149	39° 57.45'	69° 16.05'
150	39° 56.1'	69° 20.1'
151	39° 54.6'	69° 25.65'
152	39° 54.65'	69° 26.9'
153	39° 54.8'	69° 30.95'
154	39° 54.35'	69° 33.4'
155	39° 55.0'	69° 34.9'
156	39° 56.55'	69° 36.0'
157	39° 57.95'	69° 36.45'
158	39° 58.75'	69° 36.3'
159	39° 58.8'	69° 36.95'
160	39° 57.95'	69° 38.1'
161	39° 54.5'	69° 38.25'
162	39° 53.6'	69° 46.5'
163	39° 54.7'	69° 50.0'
164	39° 55.25'	69° 51.4'
165	39° 55.2'	69° 53.1'
166	39° 54.85'	69° 53.9'
167	39° 55.7'	69° 54.35'
168	39° 56.15'	69° 55.35'
169	39° 56.05'	69° 56.25'
170	39° 55.3'	69° 57.1'
171	39° 54.8'	69° 58.6'
172	39° 56.05'	70° 00.65'
173	39° 55.3'	70° 02.95'
174	39° 56.9'	70° 11.3'
175	39° 58.9'	70° 11.5'
176	39° 59.6'	70° 11.1'
177	40° 01.35'	70° 11.2'
178	40° 02.6'	70° 12.0'
179	40° 00.4'	70° 12.3'
180	39° 59.75'	70° 13.05'
181	39° 59.3'	70° 14.0'
To 119		

**Mobile Gear and Lobster Trap/Pot RGA**

RGA	Closed to mobile gear	Closed to trap/pot gear
II	November 27 - June 15	June 16 – November 26

Inshore Boundary		
Point	Latitude	Longitude
To 1		
49	40° 02.75'	70° 16.1'
50	40° 00.7'	70° 18.6'
51	39° 59.8'	70° 21.75'
52	39° 59.75'	70° 25.5'
53	40° 03.85'	70° 28.75'
54	40° 00.55'	70° 32.1'
55	39° 59.15'	70° 34.45'
56	39° 58.9'	70° 38.65'
57	40° 00.1'	70° 45.1'
58	40° 00.5'	70° 57.6'
59	40° 02.0'	71° 01.3'
60	39° 59.3'	71° 18.4'
61	40° 00.7'	71° 19.8'
62	39° 57.5'	71° 20.6'
63	39° 53.1'	71° 36.1'
64	39° 52.6'	71° 40.35'
65	39° 53.1'	71° 42.7'
66	39° 46.95'	71° 49.0'
67	39° 41.15'	71° 57.1'
68	39° 35.45'	72° 02.0'
69	39° 32.65'	72° 06.1'
70	39° 29.75'	72° 09.8'
To 48		

Offshore Boundary		
Point	Latitude	Longitude
To 49		
1	39° 59.3'	70° 14.0'
2	39° 58.85'	70° 15.2'
3	39° 59.3'	70° 18.4'
4	39° 58.1'	70° 19.4'
5	39° 57.0'	70° 19.85'
6	39° 57.0'	70° 21.25'
7	39° 57.5'	70° 22.8'
8	39° 57.1'	70° 25.4'
9	39° 57.65'	70° 27.05'
10	39° 58.58'	70° 27.7'
11	40° 00.65'	70° 28.8'
12	40° 02.2'	70° 29.15'
13	40° 01.0'	70° 30.2'
14	39° 58.58'	70° 31.85'
15	39° 57.05'	70° 34.35'
16	39° 56.42'	70° 36.8'
21	39° 58.15'	70° 48.0'
24	39° 58.3'	70° 51.1'
25	39° 58.1'	70° 52.25'
26	39° 58.05'	70° 53.55'
27	39° 58.4'	70° 59.6'
28	39° 59.8'	71° 01.05'
29	39° 58.2'	71° 05.85'
30	39° 57.45'	71° 12.15'
31	39° 57.2'	71° 15.0'
32	39° 56.3'	71° 18.95'
33	39° 51.4'	71° 36.1'
34	39° 51.75'	71° 41.5'
35	39° 50.05'	71° 42.5'
36	39° 50.0'	71° 45.0'
37	39° 48.95'	71° 46.05'
38	39° 46.6'	71° 46.1'
39	39° 43.5'	71° 49.4'
40°	39° 41.3'	71° 55.0'
41	39° 39.0'	71° 55.6'
42	39° 36.72'	71° 58.25'
43	39° 35.15'	71° 58.55'
44	39° 34.5'	72° 00.75'
45	39° 32.2'	72° 02.25'
46	39° 32.15'	72° 04.1'
47	39° 28.5'	72° 06.5'
48	39° 29.0'	72° 09.25'
To 70		

Mobile Gear and Lobster Trap/Pot RGA		
RGA	Closed to mobile gear	Closed to trap/pot gear
III	June 16 - November 26	January 1 – April 30

Inshore Boundary		
Point	Latitude	Longitude
To 49		
182	40° 05.6'	70° 17.7'
183	40° 06.5'	70° 40.05'
184	40° 11.05'	70° 45.8'
185	40° 12.75'	70° 55.05'
186	40° 10.7'	71° 10.25'
187	39° 57.9'	71° 28.7'
188	39° 55.6'	71° 41.2'
189	39° 55.85'	71° 45.0'
190	39° 53.75'	71° 52.25'
191	39° 47.2'	72° 01.6'
192	39° 33.65'	72° 15.0'
To 70		

Offshore Boundary		
Point	Latitude	Longitude
To 182		
49	40° 02.75'	70° 16.1'
50	40° 00.7'	70° 18.6'
51	39° 59.8'	70° 21.75'
52	39° 59.75'	70° 25.5'
53	40° 03.85'	70° 28.75'
54	40° 00.55'	70° 32.1'
55	39° 59.15'	70° 34.45'
56	39° 58.9'	70° 38.65'
57	40° 00.1'	70° 45.1'
58	40° 00.5'	70° 57.6'
59	40° 02.0'	71° 01.3'
60	39° 59.3'	71° 18.4'
61	40° 00.7'	71° 19.8'
62	39° 57.5'	71° 20.6'
63	39° 53.1'	71° 40.35'
64	39° 52.6'	71° 40.35'
65	39° 53.1'	71° 42.7'
66	39° 46.95'	71° 49.0'
67	39° 41.15'	71° 57.1'
68	39° 35.45'	72° 02.0'
69	39° 32.65'	72° 06.1'
70	39° 29.75'	72° 09.8'
To 192		

**Mobile Gear and Lobster Trap/Pot RGA**

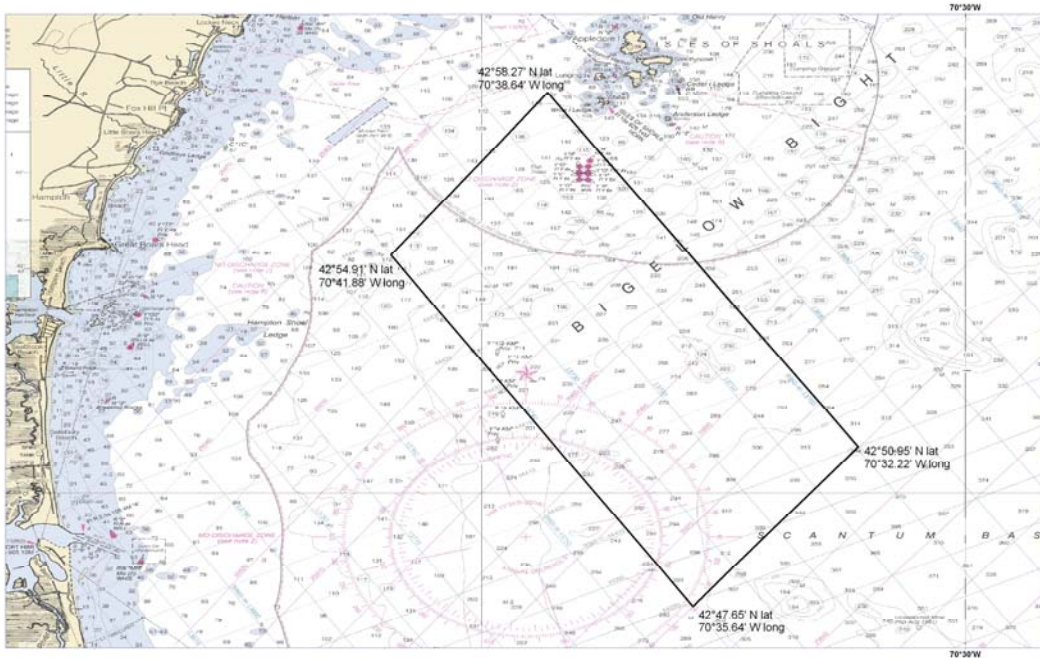
RGA	Closed to mobile gear	Closed to trap/pot gear
IV	June 16 - September 30	No closure

Inshore Boundary		
Point	Latitude	Longitude
193	40° 13.6'	68° 40.6'
194	40° 11.6'	68° 53.0'
195	40° 14.0'	69° 04.70'
196	40° 14.30'	69° 05.80'
197	40° 05.5'	69° 09.0'
198	39° 57.3'	69° 25.10'
199	40° 00.40'	69° 35.20'
200	40° 01.70'	69° 35.40'
201	40° 01.70'	69° 37.40'
202	40° 00.50'	69° 38.80'
203	40° 01.30'	69° 45.00'
204	40° 02.10'	69° 45.00'
205	40° 07.60'	70° 04.50'
206	40° 07.80'	70° 09.20'
To 119		

Offshore Boundary		
Point	Latitude	Longitude
69	40° 07.90'	68° 36.00'
70	40° 07.2'	68° 38.40'
71	40° 06.90'	68° 46.50'
72	40° 08.70'	68° 49.60'
73	40° 08.10'	68° 51.00'
74	40° 05.70'	68° 52.40'
75	40° 03.60'	68° 57.20'
76	40° 03.65'	69° 00.00'
77	40° 04.35'	69° 00.50'
78	40° 05.20'	69° 00.50'
79	40° 05.30'	69° 01.10'
80	40° 08.90'	69° 01.75'
81	40° 11.00'	69° 03.80'
82	40° 11.60'	69° 05.40'
83	40° 10.25'	69° 04.40'
84	40° 09.75'	69° 04.15'
85	40° 08.45'	69° 03.60'
86	40° 05.65'	69° 03.55'
87	40° 04.10'	69° 03.90'
88	40° 02.65'	69° 05.60'
89	40° 02.00'	69° 08.35'
90	40° 02.65'	69° 11.15'
91	40° 00.05'	69° 14.60'
92	39 57.8'	69° 20.35'
93	39 56.75'	69° 24.40'
94	39 56.50'	69° 26.35'
95	39 56.80'	69° 34.10'
96	39 57.85'	69° 35.05'
97	40° 00.65'	69° 37.30'
98	40° 00.90'	69° 37.30'
99	39 59.15'	69° 37.30'
100	39 58.80'	69° 38.45'
102	39 56.20'	69° 40.20'
103	39 55.75'	69° 41.40'
104	39 56.70'	69° 53.60'
105	39 57.55'	69° 54.05'
106	39 57.40'	69° 55.90'
107	39 56.90'	69° 57.45'
108	39 58.25'	70° 03.00'
110	39 59.20'	70° 04.90'
111	40° 00.70'	70° 08.70'
112	40° 03.75'	70° 10.15'
115	40° 05.20'	70° 10.90'
116	40° 02.45'	70° 14.1'
119	40° 02.75'	70° 16.1'
To 206		



## WHALEBACK COD SPAWNING CLOSURE AREA



**Gear Restrictions:** The following gear restrictions apply to either commercial or recreational fishing vessels fishing in the GOM Cod Spawning Protection Area.

- **Commercial vessels:** From June 1 through June 30 of each year, all commercial fishing vessels are prohibited from fishing within the GOM Cod Spawning Protection Area using gear capable of catching groundfish, including mid-water trawl and purse seine gear. Commercial fishing vessels may only use the following exempted gear in this area during June:
  - Pelagic hook and line gear, pelagic longline gear, spears, rakes, diving gear, cast nets, tongs, harpoons, weirs, dipnets, stop nets, pound nets, pelagic gillnets, pots and traps, shrimp trawls with a properly configured grate, and surfclam and ocean quahog dredges.
  - Pelagic gillnet gear is defined as a single pelagic gillnet that is no longer than 300 ft and not greater than 6 ft deep, with a maximum mesh size of 3 inches (7.6 cm), that is attached to the boat and fished in the upper two-thirds of the water column.
- **Recreational vessels:** From April 1 through June 30 of each year, all recreational vessels, including private recreational and charter/party vessels, may only use pelagic hook-and-line gear, as defined below, when fishing in the GOM Cod Spawning Protection Area.
  - Pelagic hook-and-line gear is defined as handline or rod and reel gear that is designed to fish for, or that is being used to fish for, pelagic species. No portion of this gear may be operated in contact with the bottom at any time.

Point	N. Latitude	W. Longitude
CSPA1	42° 50.95'	70° 32.22'
CSPA2	42° 47.65'	70° 35.64'
CSPA3	42° 54.91'	70° 41.88'
CSPA4	42° 58.27'	70° 38.64'

**Possession Restrictions:** Any vessel fishing in the GOM Cod Spawning Protection Area and using the exempted gear described above, including pelagic hook-and-line gear by recreational vessels, is prohibited from possessing or retaining regulated species or ocean pout from April 1 through June 30 of each year.

**Transiting:** Both recreational and commercial vessels are allowed to transit the GOM Cod Spawning Protection Area, provided all gear is stowed according to existing regulations.