

Headquarters U.S. Air Force

Integrity - Service - Excellence

AQ Overview

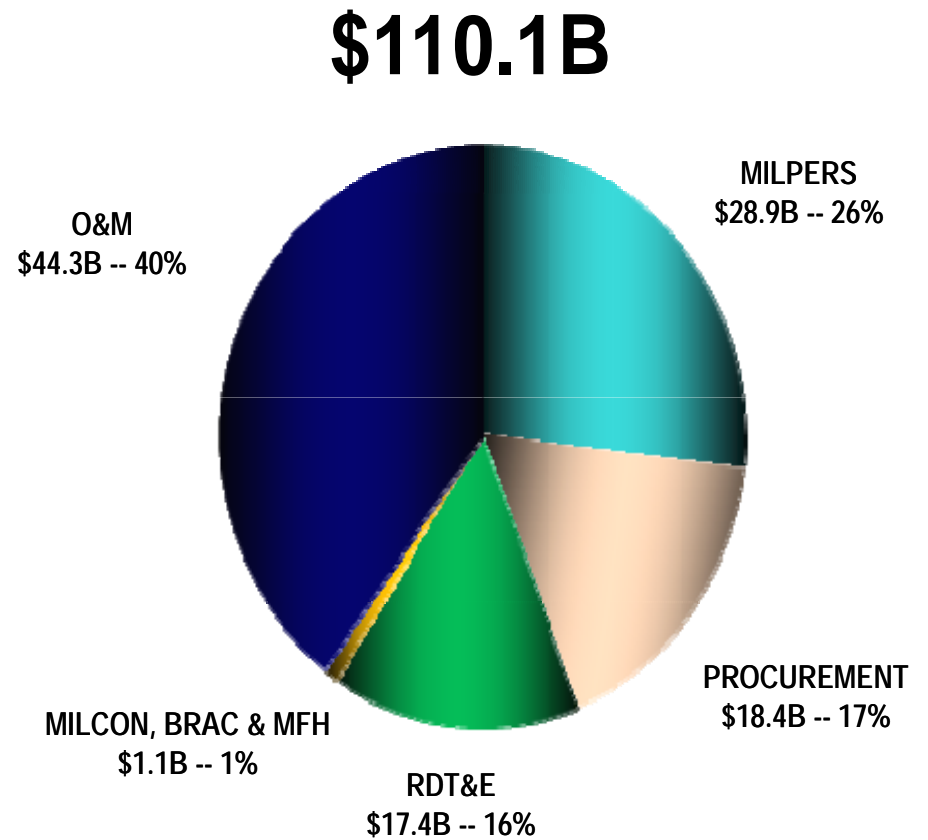
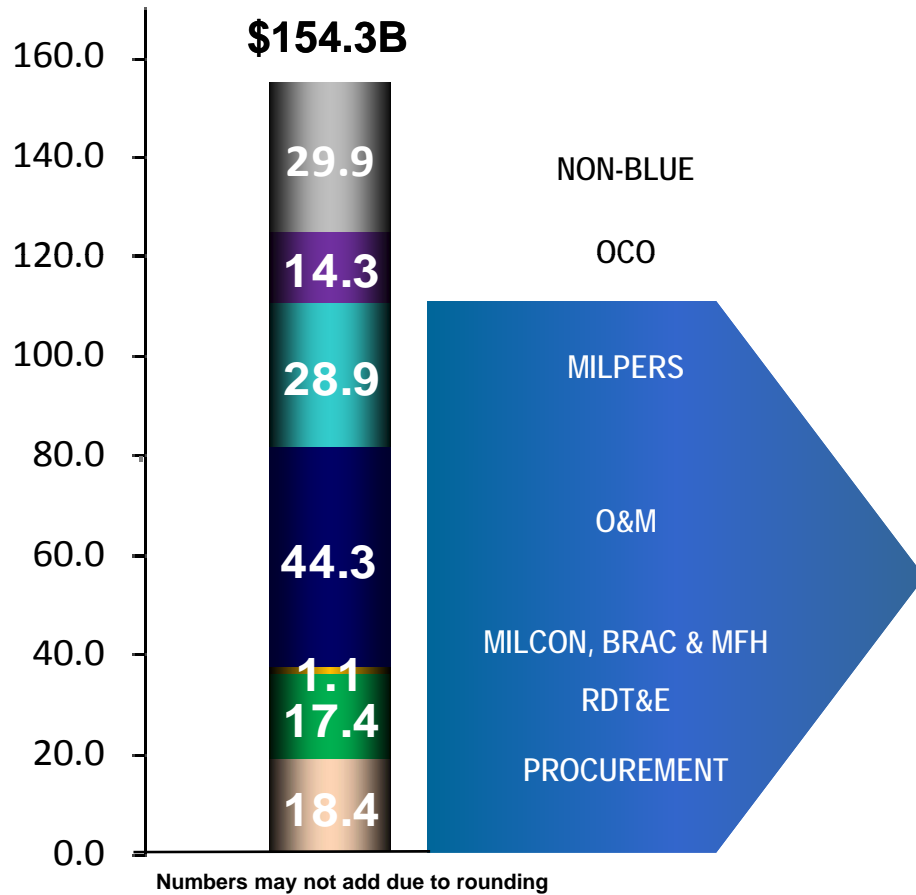


U.S. AIR FORCE



U.S. AIR FORCE

FY13 PB Request – Blue \$



Excludes Non-Blue and OCO

Integrity - Service - Excellence



U.S. AIR FORCE

FY13 PB(FYDP) AF Top 10 Major Programs

1.	F-35 JSF (Lockheed-Martin)	\$ 29.4B	↓
2.	Classified + LRS (Various)	\$ 27.1B	↑
3.	KC-46A Tanker (Boeing)	\$ 13.1B	↔
4.	S&T (Various)	\$ 11.5B	↔
5.	EELV (Boeing/Lockheed-Martin)	\$10.2B	↑
6.	MQ-9 Reaper (General Atomics)	\$ 4.4B	↓
7.	F-22 (Lockheed-Martin)	\$ 4.4B	↓
8.	SBIRS (Lockheed-Martin)	\$ 4.2B	↓
9.	AEHF (Lockheed-Martin)	\$ 4.1B	↓
10.	GPS 3 (Lockheed-Martin)	\$ 4.1B	↓

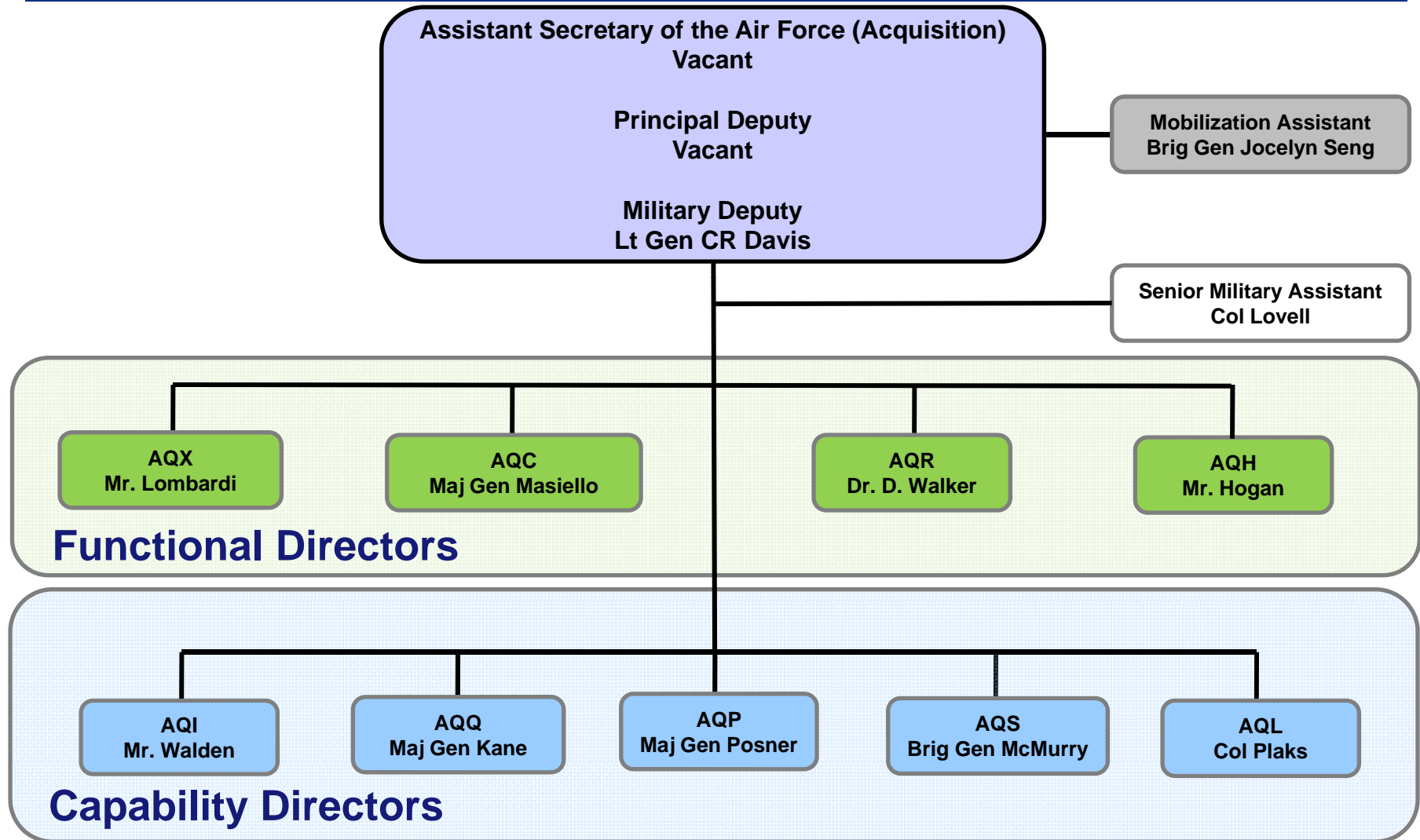
55.8% of Total Spend

\$112.5B



U.S. AIR FORCE

Assistant Secretary of the Air Force SAF/AQ Directorate Structure

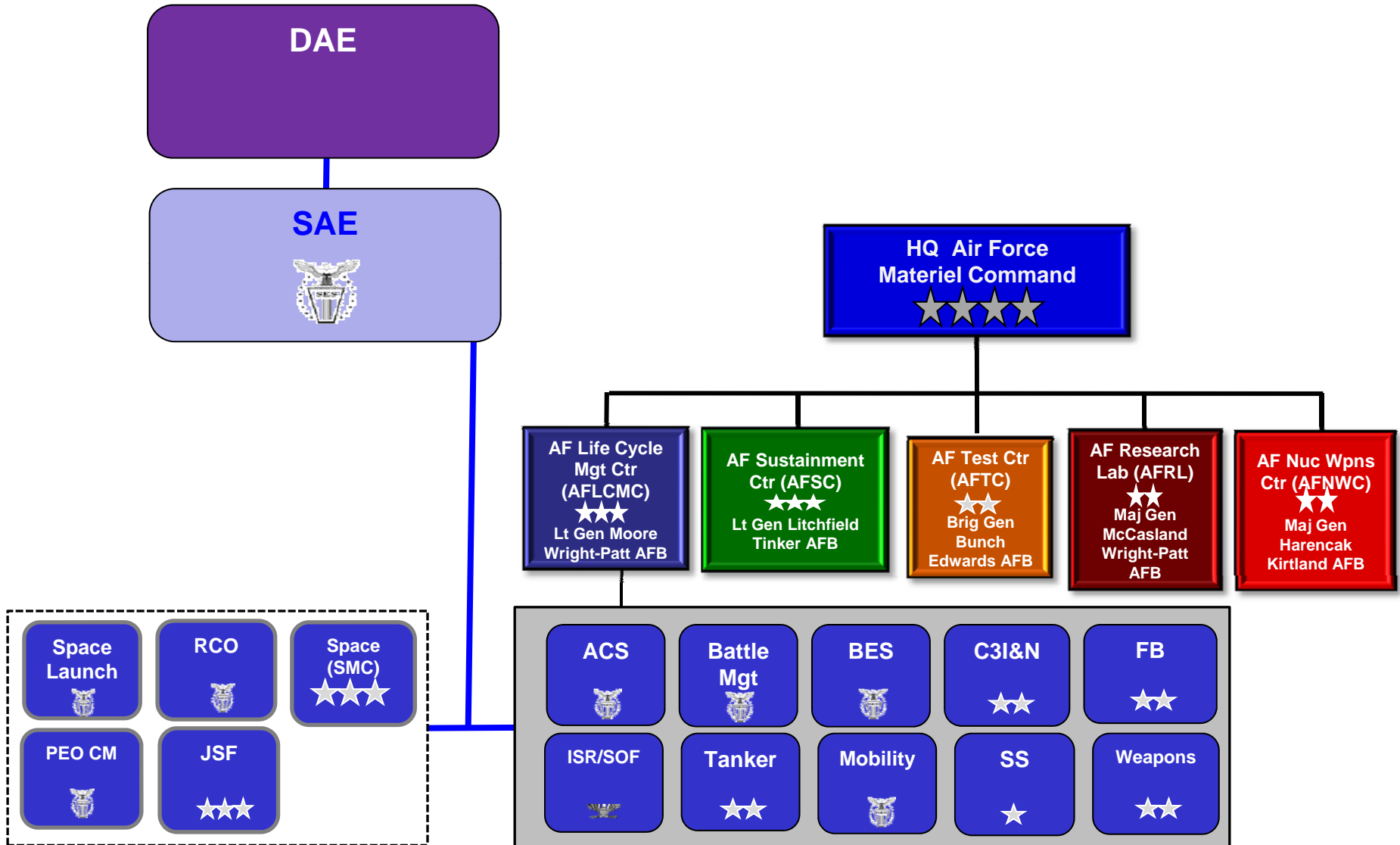


Integrity - Service - Excellence



U.S. AIR FORCE

PEO Structure





U.S. AIR FORCE

PEO Structure

Assistant Secretary of the Air Force

(Acquisition)

Vacant

Military Deputy
Lt Gen CR Davis

Principal Deputy

Vacant

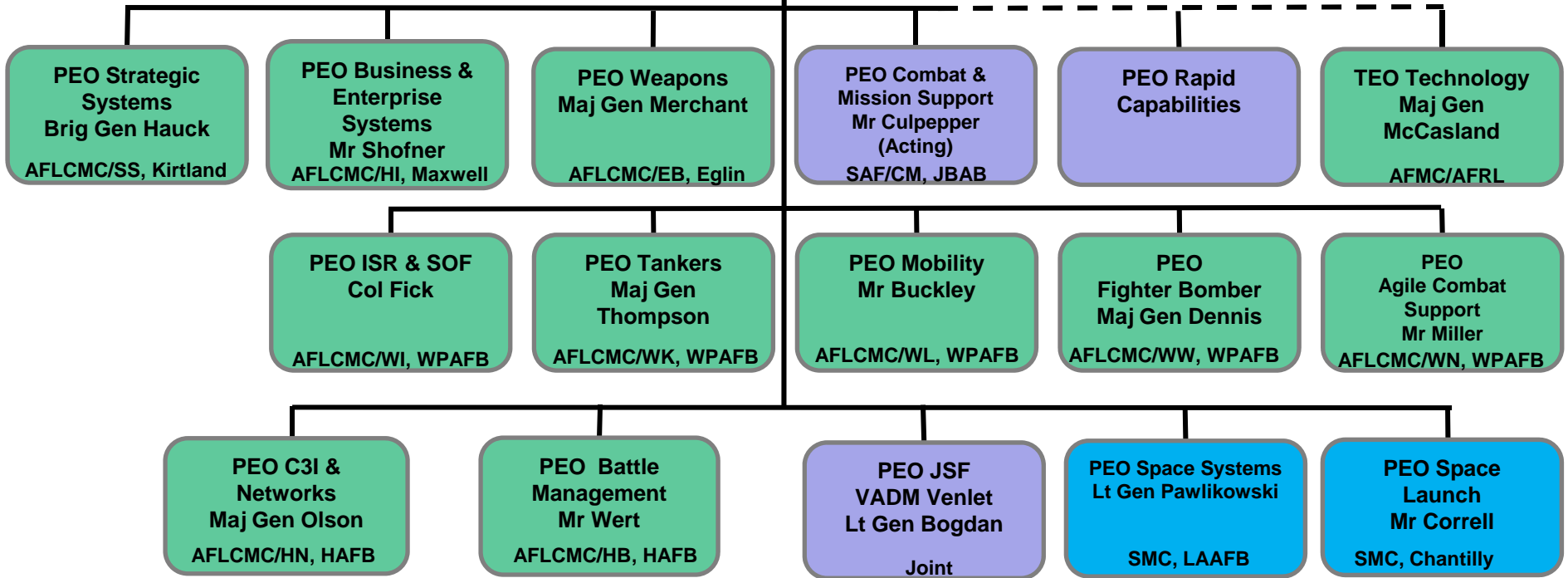
AFLCMC



SMC



Other



Integrity - Service - Excellence



AFMC Organizations

U.S. AIR FORCE

HQ Air Force Materiel Command



AF Life Cycle Mgt Ctr (AFLCMC)



Lt Gen Moore
Wright-Patt AFB

AF Sustainment Ctr (AFSC)



Lt Gen Litchfield
Tinker AFB

AF Test Ctr (AFTC)



Brig Gen Bunch
Edwards AFB

AF Research Lab (AFRL)



Maj Gen McCasland
Wright-Patt AFB

AF Nuc Wpns Ctr (AFNWC)



Maj Gen Harencak
Kirtland AFB

Life Cycle Mgt

Includes:

All Program
Executive Offices
Former Aerospace Sustainment Directorate
Program Offices
AFSAC Directorate
Prop Directorate
66 Air Base Group
88 Air Base Wing

Sustainment

Includes:

WR, Ogden, OC
Air Logistics Complex
448 Supply Chain Mgmt Wing
635 Supply Chain Operations Wing
72 Air Base Wing
75 Air Base Wing
78 Air Base Wing

Testing

Includes:

Arnold Engineering Development Complex
96 Test Wing (w/ 96 Air Base Wing)
412 Test Wing (w/ 95 Air Base Wing)

Technology

Includes:

Merge 10 to 9 Directorates
Consolidate like activities in four others

Nuclear

Includes:

498 NSW to be Nuc Capab Direct.
377 ABW w/ 498 MUMG to 377 W
898 MUNS moves to 377 Wing
WSAs to AFGSC
PEO aligned to LCMC

Integrity - Service - Excellence