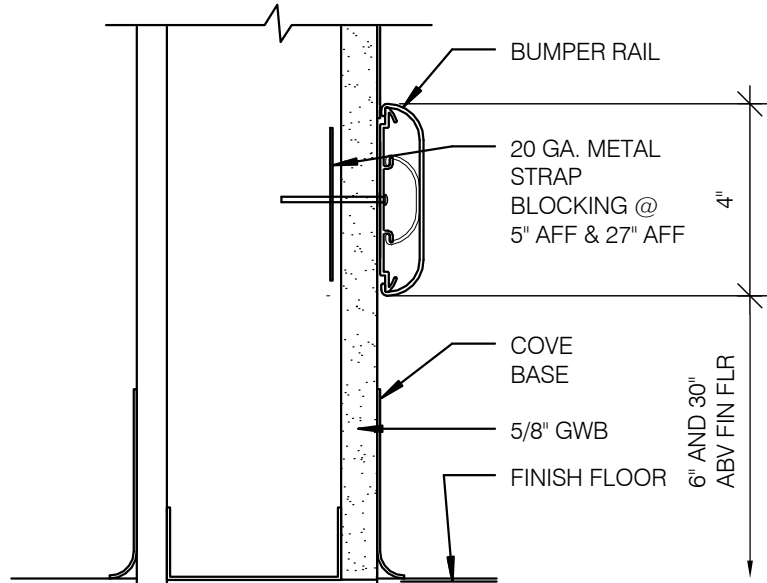


**NOTE:**  
 THIS INFORMATION MAY NOT CONTAIN ALL DETAILS REQUIRED FOR CONSTRUCTION. APPROPRIATE MODIFICATION MAY BE REQUIRED TO ENSURE SUITABILITY OF THESE DRAWINGS FOR THE SPECIFIC APPLICATION. IT IS THE USER'S RESPONSIBILITY TO ENSURE INSTALLATION OF THE EQUIPMENT/SYSTEM IS IN ACCORDANCE WITH BUILDING/PROJECT SPECIFICATIONS, APPLICABLE CODES AND STANDARDS.



**NOTE:**

PROVIDE BUMPER RAIL WHERE SHOWN ON (SHEET No). PROVIDE ENDCAPS PIECES TO TERMINATE EACH RUN, AND AS NEEDED.

**BUMPER RAIL DETAIL - TYPE-1**

3" = 1'-0"

PROPERTY OF THE UNITED STATES GOVERNMENT FOR OFFICIAL USE ONLY DO NOT REMOVE THIS NOTICE  
 PROPERLY DESTROY DOCUMENTS WHEN NO LONGER NEEDED



**Division of Technical Resources**  
 Office of Research Facilities  
 National Institutes of Health  
*The formulae of the state of the art for building biomedical research facilities.*

DRAWING  
 TITLE

BUMPER RAIL DETAIL

A-SK10-00

LAST  
 REVISION

NOVEMBER 17, 2011