

Altus Air Force Base

**Economic Impact
Fiscal Year 2011**



The Mighty 97th

Commander's Welcome

The 97th Air Mobility Wing is pleased to present our Economic Impact Analysis for fiscal year 2011. This annual publication is produced to help inform the reader of the significant economic impact Altus Air Force Base has on its surrounding communities.

Altus Air Force Base is the home of the Mobility Training Center of Excellence where global mobility is enabled by expertly training both airlift and aerial refueling aircrews, while simultaneously maintaining world-wide deployment capabilities. Altus Air Force Base generated employment for more than 3,900 personnel and contributed a significant financial impact on its surrounding communities during FY11 valued at \$360,118,628.



As we move forward both supporting the community and our Air Force mission to fly, fight and win in air, space and cyberspace, it would not be possible without the dedication of the men and women of Altus Air Force Base who live, work and educate their children in the Altus community. Our mission of “*Forging Combat Mobility Forces, Deploying Airman Warriors*” could not succeed without them and the trusted and reliable partnership of our local communities. We are proud to be part of a community that faithfully and consistently supports our military.

A handwritten signature in blue ink, appearing to read "A. B. Krawietz". The signature is fluid and cursive, written on a white background.

ANTHONY B. KRAWIETZ, Col, USAF
Commander, 97th Air Mobility Wing

Message from the Comptroller



The Economic Impact Analysis for the 97th Air Mobility Wing is prepared annually by the Comptroller Squadron to provide unclassified information to the public concerning our significant economic impact on the local area. Items addressed include: personnel assigned to or employed by the base; annual payroll of all assigned and employed personnel; expenditures for construction, services and procurement of materials, equipment and supplies; and estimated number and dollar value of indirect jobs created by Altus Air Force Base's presence.

The total economic impact of a base on its economic area is computed by summing annual base payroll, annual base expenditures and the estimated dollar value of indirect jobs created. An economic area is generally defined as a Metropolitan

Statistical Area (MSA). Each MSA has unique indirect job multipliers that are calculated by the Bureau of Labor Statistics (BLS) and are used to estimate the number of the indirect jobs created. This analysis was prepared using a Secretary of the Air Force/Directorate of Cost and Economics (SAF/FMC) program that was developed within the parameters of the Office of the Secretary of Defense's Economic Impact Analysis model. The economic impact takes into account both Appropriated Funds (APF) and Non-Appropriated Funds (NAF).

This statement should provide the reader with an understanding of the vital economic and personal relationship between Altus Air Force Base and the surrounding communities.

OLGA L. ACOSTA, Maj, USAF
Commander, 97th Comptroller Squadron

Contents

Commander's Welcome	i
Message from the Comptroller	ii
Economic Impact Synopsis	2
A Brief Look at Altus AFB	3
Weapon Systems	4
Capital Assets	5
Resources	6
Personnel and Payroll	7
Construction	8
Expenditures	9
Program Data	10
Serving the Community	11
Where We've Been	12

FOREWORD

Altus Air Force Base's work force consists of 3,910 employees. Of these, 2,150 are civilian. Civilian employees are divided into four major categories: Wage Grade, General Schedule Civil Service, National Security Personnel System, and Non-Appropriated Fund (included in the non-appropriated numbers are Base Exchange, NBC Bank, Red River Federal Credit Union, and private contractors). There are over 1,420 retired military members in the regional area. Most use Altus Air Force Base facilities, although the retiree impact is not included in this report.

For fiscal year 2011, the economic impact of Altus Air Force Base on the local area was approximately 360 million dollars.

AVAILABILITY OF INFORMATION

This Economic Impact Analysis (EIA) provides key unclassified information about the resources and economic impact of Altus Air Force Base on the surrounding communities. Questions concerning the content of this analysis should be directed to the 97 CPTS/FMA, 510 N. 6th St., Room 360, Altus AFB, OK 73523-5022, DSN 866-7768 or commercial (580) 481-7768. All requests for additional information or copies of this report should be directed to the 97 AMW/PA (Public Affairs Office) at DSN 866-7700 or commercial (580) 481-7700.

Information contained in this analysis is current as of 30 September 2011.

Economic Impact Synopsis

The Altus Air Force Base Economic Impact Analysis is a useful resource for Air Force planners and a source of information for community leaders, legislators, and installation visitors. It presents the total economic impact and number of off-base secondary jobs supported by Air Force expenditures in the Economic Impact Region (EIR). The EIR for Altus Air Force Base covers the area within a fifty-mile radius, including the city of Altus.

The information presented in this pamphlet is updated annually by fiscal year.

THE TOTAL ECONOMIC IMPACT OF ALTUS AIR FORCE BASE ON THE SURROUNDING COMMUNITY FOR FISCAL YEAR 2011 WAS:

\$360,118,628

OFFICE OF PRIMARY RESPONSIBILITY

Financial Analysis Flight
97th Comptroller Squadron
510 N. 6th St., Room 360
Altus Air Force Base, Oklahoma 73523-5022
Telephone (580) 481-7768
DSN 866-7768

A Brief Look at Altus AFB

Activated as a multi-engine flight training school in 1943, Altus AFB has been a cornerstone of Southwestern Oklahoma for more than 60 years. With an average of more than 300 days of weather conducive to flying each year, a generally flat landscape and few obstructions, the base was then, and is still, ideally situated for young Airmen to hone their flying skills. During the next six decades, the base evolved to become the premier air mobility training location in the United States Air Force (USAF).

During World War II, students honed their skills on training aircraft such as the Cessna AT-17, the Curtiss AT-9 and to some extent the Beechcraft AT-7. Once confident and capable, the students received their wings and transferred to their next assignment operating the type of aircraft they would use in combat over the European and Pacific theaters. At the end of hostilities in Europe, Altus Army Airfield was inactivated as a training location and placed on temporary inactive status.

After reactivation on Aug 1, 1953, Altus AFB served briefly as a Tactical Air Command base, operating the C-47 *Skytrain* before switching to an operational Strategic Air Command wing with the first all jet-engine powered bomber, the B-47 *Stratojet*.

Through the 1950s and into the 1960s the base would also experience many mission changes to include the regular use of in-flight refueling with the KC-97 *Stratofreighter* and alert missions with the B-52 *Flying Fortress* and the ageless KC-135 *Stratotanker*. Also, during the early 1960s the base hosted a ring of twelve Atlas missile silos around the local area. As the Air Force expanded during the Cold War and the war in Southeast Asia, the base received another new mission, air transport. In 1967, the Air Force selected Altus AFB for the training site for its most versatile cargo aircraft, the C-141 *Starlifter* and the enormous C-5 *Galaxy*. The clear skies and wide expanses of Oklahoma proved to be best suited for the mission. By the start of the 1970s, Altus AFB had three aircraft assigned: the KC-135, the C-141 and the C-5. Through the 1980s and the 1990s, these three aircraft became a common sight in the skies above Southwestern Oklahoma.

As the twentieth century drew to a close, Altus AFB welcomed the arrival of the agile C-17 *Globemaster III* in 1996. This aircraft, with a unique winglet, an expansive cargo area, and powerful engines, is the newest cargo aircraft in the Air Force. Even before its arrival, the base began training pilots and loadmasters to operate and fly the aircraft designed for use as an intermediate short-airfield cargo aircraft.

The dawn of the twenty-first century marked the retirement of an old workhorse. In 2001, following 32 years at Altus AFB, the C-141 was released from active duty.

The following year the Altus AFB mission grew again when the Air Force moved the basic loadmaster course from Sheppard AFB, Texas, to Altus. The initiative combined similar training programs to reduce the number of moves required by trainees while cutting overall costs.

In August of the same year the 97 AMW reorganized as a "combat wing." The Air Force wide change involved the inactivation of the 97th Logistics Group and the task of all aircraft maintenance fell to the 97th Maintenance Directorate comprised solely of civilian maintainers. The transformation involved the inactivation of the 97th Transportation Squadron. Its mission was combined with that of the redesignated 97th Supply Squadron as the 97th Logistics Readiness Squadron. Additionally, the 97th Contracting Squadron became part of the 97th Support Group now called the 97th Mission Support Group.

In 2005, the wing expanded the training of the C-17 in two areas. First, adding the opportunity for dual-row airdrop delivery, doubling the amount of equipment the aircrews can bring directly into the combat theater of operations and second, training the aircrews on the use of night vision goggles. This provides crews with increased survivability during low-light operations, especially in combat.

In 2007, the C-5A *Galaxy* mission, the basic loadmaster and the basic boom operator courses left Altus and transferred to Lackland AFB, Texas, with the C-5 training mission becoming the responsibility of the US Air Force Reserve. In addition, the Airfield Officers Training Program ceased operations at Altus AFB and the training transferred to the Air National Guard.

Along with training, the men and women permanently assigned to Altus AFB continually deploy in support of Overseas Contingency Operations. Since 2001, the wing has sustained an average of 150 personnel a year deployed at any one time.

Although numerous mission changes have occurred throughout the years, Altus AFB has continued to perform the basic mission it started in 1943, providing a safe environment to train military personnel and prepare them for action worldwide.

Weapon Systems

Total Aircraft Inventory (TAI) Value

\$5,837,100,000



The C-17 *Globemaster III* is the newest, most flexible cargo aircraft to enter the Air Force. The C-17 is capable of rapid strategic delivery of troops and all types of cargo to main operating bases or directly to forward bases in the deployment area. The aircraft is able to perform tactical airlift, airdrop missions and can also transport litter and ambulatory patients during aeromedical evacuations when required. The inherent flexibility and performance characteristics of the C-17 improve the ability of the total airlift system to fulfill the worldwide air mobility requirements of the United States.

The KC-135 *Stratotanker's* principal mission is air refueling. This unique asset greatly enhances the U.S. Air Force's capability to accomplish its primary missions of Global Reach and Global Power. It provides aerial refueling support to Air Force, Navy, and Marine Corps aircraft, as well as aircraft of allied nations. The KC-135 is also capable of transporting litter and ambulatory patients using patient support pallets during aeromedical evacuations.



Capital Assets

BUILDINGS/FACILITIES	Number of Bldgs	SQ FT
Petroleum Distribution	10	28,656
Communications/Nav Aids/ Airfield Lighting	6	49,779
Land Operation Facilities	7	158,305
Training Facilities	12	267,714
Maintenance Facilities	27	622,779
Explosive Facilities	1	3,665
Storage Facilities	16	180,641
Medical Facilities	2	107,650
Administrative Facilities	13	426,508
Dormitory Quarters and Dining Facilities	13	357,117
Personnel Support	11	57,525
Morale/Welfare/Recreation- Indoors	20	341,030
Services-Outdoors	6	18,005
Electricity, Heat, Water, Sewage and Waste	2	2,736
Other (Includes other Real Property)	198	

<u>LAND</u>	<u>ACRES</u>
Government Owned	5,035
Easement, Right-of-Way	<u>2,804</u>
Total	7,839

<u>RUNWAY</u>	<u>WIDTH</u>	<u>LENGTH</u>
Inside Runway	150'	13,440'
Outside Runway	150'	9,000'
Assault Strip	94'	3,501'

<u>DORMITORY QUARTERS</u>	<u>QTY</u>
Temp Lodging Facilities	4
Distinguished Visitor Facilities	2
Visiting Quarters	5

<u>VEHICLES</u>	<u>QTY</u>
Owned	419
Leased	37
OGMVCs	<u>67</u>
TOTAL	523

<u>COMPUTERS</u>	<u>QTY</u>
Owned	5,034



Resources



Weapon Systems	78.7%	\$5,837,100,000
Capital Assets	19.5%	\$1,449,189,000
Equipment	1.5%	\$ 113,566,073
Inventories	0.2%	<u>\$ 16,440,326</u>
Total Resources		\$7,416,295,399

Personnel and Payroll

Appropriated Fund (APF) Personnel and Payroll

	<u>Personnel</u>	<u>Payroll</u>
Military Permanent Party		
On base (Including Active Duty Reserve)	229	\$ 5,049,730
Off base	1,169	\$ 57,710,217
Military Trainees (Average Daily Load)	362	\$ 32,057,661
Civilian	<u>1,243</u>	<u>\$ 66,401,320</u>
Total	3,003	\$161,218,928

Non-Appropriated Fund (NAF) Personnel and Payroll

	<u>Personnel</u>	<u>Payroll</u>
Civilian NAF	186	\$ 2,909,005
Base Exchange	35	\$ 610,000
Contract Civilians, not elsewhere included	642	\$ 22,593,305
Private Businesses:		
Credit Union/Bank	6	\$ 116,949
Private Business (Including College Instructors and Lighthouse)	<u>38</u>	<u>\$ 369,733</u>
	907	\$ 26,598,992
Total Personnel and Payroll	3,910	\$187,817,920

Payroll Summary

APF Military	50.5%
APF Civilian	35.4%
NAF Civilian	14.2%

Military Retirees Personnel and Payroll

	<u>Personnel</u>	<u>Payroll</u>
Air Force	1,148	\$ 25,356,000
Army	198	\$ 3,888,000
Coast Guard	2	\$ 24,000
Navy	61	\$ 1,140,000
Marines	<u>11</u>	<u>\$ 216,000</u>
Total	1,420	\$ 30,624,000

Military Family Members **1,051**

Construction

\$87,520,266



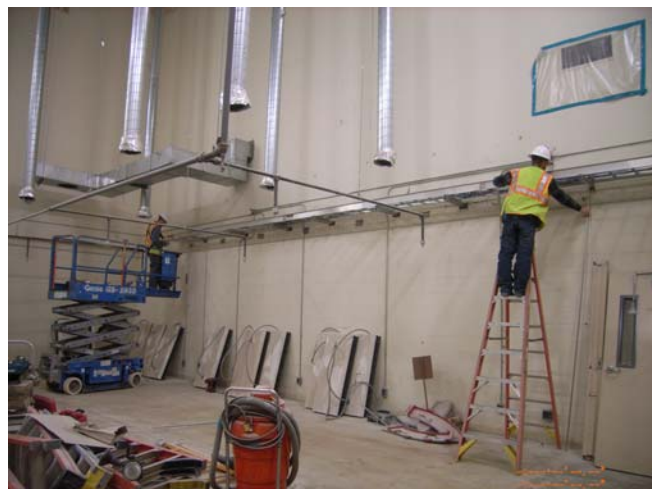
**Military Construction
\$42,135,250**

**Operations and Maintenance
\$43,275,616**

**Storm Damage
\$2,100,000**

**Medical
\$9,400**

Projects include: airfield/taxiways construction, overhead to underground utilities, raw water line, mill and overlay of roads, gym floor replacement, storm damaged roofs, grooving hangar floors, and joint sealant.



Expenditures

Construction	75.5%	\$87,520,266
Services	8.4%	\$17,336,716
Commissary/BX	0.2%	\$ 278,364
Health/Education/TDY	12.7%	\$10,555,251
Other Material	3.2%	\$ 3,733,183

\$119,423,780



Program Data

Base Operations and Maintenance and other Appropriations

\$130,298,884

Medical

Outpatient Visits	22,065
Immunizations	8,692
X-Ray Procedures	1,484
Lab Procedures	20,637
Pharmacy Prescriptions	63,619
Dental Visits	7,331
Optometry Visits	1925

Retail Sales

Base Exchange	\$6,700,000
Commissary	\$8,113,948
Non Appropriated Fund	\$1,209,288

Utilities Consumed

	<u>Quantity</u>	<u>Cost</u>
Gas (MCF)	106,285	\$ 804,931
Sewage (Gallons)	155,546	\$ 79,355
Water (Gallons)	212,651	\$ 314,650
Electricity (KWH)	47,165,786	\$2,978,758

Education Enrollment

	<u>Officer</u>	<u>Enlisted</u>	<u>Civilian</u>
Undergraduate	1	1,053	87
Graduate	118	67	64

Community Service

Family Services Volunteers	8
Hours Donated	320
GIVE Volunteer Hours Donated	1,023

	<u>% Contacted</u>	<u>Collected</u>
Combined Federal Campaign	100%	\$108,778
Air Force Assistance Fund	100%	\$ 34,949



Serving the Community

Altus Air Force Base members performed more than 1,350 hours of volunteer service in the community during fiscal year 2011.



NCAA Division III Softball Championship Game



Habitat for Humanity



Harvest for the Hungry



Tipton Home Holiday Party



Rescue Mission Award Ceremony

Where We've Been



Operation Odyssey Dawn



Patriot Missile Exercise with Ft Sill



Air Mobility Command Rodeo



Canadian Forces Skyhawks C-17 support



C-141 Memorial Dedication



Air Force Birthday Ball

**101 Critical Days of Summer: Safely done!
"Excellent" Compliance Inspection**