

---

# It's all about . . . *Plants!*



## Louisiana's Native Plant Initiative Marks Milestone

On May 27, 2011, partner agencies came together at the University of Louisiana-Lafayette Center for Ecology and Environmental Technology to sign an agreement that marks renewal of an important initiative for Louisiana—Louisiana's Native Plant Initiative. This multi-agency initiative is dedicated to helping conserve a vanishing natural resource in Louisiana—our native plants.

"Native plants adapted to Louisiana are essential for restoring naturally-functioning endangered ecosystems," said Phil Turnipseed, Director of the U.S. Geological Survey National Wetlands Research Center in Lafayette. "These ecosystems are resilient and sustainable because they provide better quality

habitat for native pollinators, grassland birds, and our partners' conservation goals."

In Louisiana, native plants such as longleaf pine, switchgrass, big bluestem, little bluestem, smooth cordgrass, eastern gamagrass, and partridge pea exist and are part of various unique ecosystems.

"Native plants maintain the biological diversity necessary to keep a healthy ecosystem," said Kevin Norton, State Conservationist for USDA Natural Resources Conservation Service. "A healthy ecosystem will help protect water quality, prevent soil erosion, and provide wildlife habitat for resident and migratory species."

Native plants are important because they evolved naturally—adapting to soils and local climates. Because native plants have adapted to local conditions, they are vigorous and hardy, require no fertilization or irrigation, are long lived, good pollinators, resistant to pests and diseases, and provide abundant nutritional forage for livestock.

Public and private land managers around the state are using locally adapted native plants for restoration, conservation, and re-vegetation projects—but there are limited native plant materials available. LNPI partners are working together to collect, increase, and release native plants for commercial production.

---

*19 Agencies Sign Agreement to Work Together to Conserve Louisiana's Native Plants*



East Texas PMC  
Harvesting Native Plants



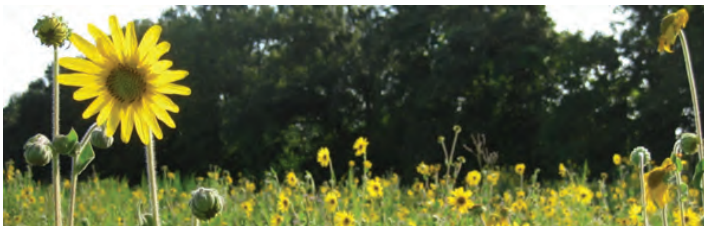
Golden Meadow PMC  
Submersed Aquatic  
Vegetation



McNeese State University - Lanceleaf Coreopsis



Nicholls State University  
Rough Coneflower



University of Louisiana at Lafayette CEET - Ashy Sunflower Production Block

## LNPI Partners

USDA Natural Resources Conservation Service  
 U.S. Geological Survey—National Wetlands Research Center  
 McNeese State University  
 Nicholls State University  
 University of Louisiana at Lafayette  
 Acadiana RC&D Council  
 Barataria Terrebonne National Estuary Program  
 Louisiana Department of Agriculture and Forestry  
 Louisiana Department of Wildlife and Fisheries  
 Coastal Plain Conservancy  
 Louisiana Wildlife Federation  
 The Nature Conservancy—Louisiana Chapter  
 Southern University  
 USDA Forest Service—Kisatchie National Forest  
 U.S. Fish and Wildlife Service  
 Bayouland RC&D Council  
 Imperial Calcasieu RC&D Council  
 Twin Valley RC&D Council  
 Capital RC&D Council



## LNPI Partner Spotlight

<p>USDA NRCS Golden Meadow Plant Materials Center</p>	<p>East Texas Plant Materials Center</p>	<p>Stuart Seed Orchard Catahoula Ranger District Kisatchie National Forest</p>	<p>University of Louisiana at Lafayette Center for Ecology and Environmental Technology</p>	<p>Coastal Plains Conservancy Kayouchee Prairie</p>	<p>McNeese State University Louisiana Environmental Research Center</p>	<p>Nicholls State University Farm</p>
<p>Seedling Production</p> <p>This center develops plants and procedures targeted to reverse the loss of coastal wetlands.</p>	<p>Seed Increase for Ashy Sunflower</p> <p>This center specializes in developing native plant materials for conservation practices and wildlife benefit.</p>	<p>Stuart Seed Orchard</p> <p>Established in 1934 to produce and replant pine seedlings over clear-cut areas.</p>	<p>Green House Production</p> <p>This center supports research, education, and community outreach in ecology and environmental biology with emphasis on sustainable resources.</p>	<p>Yellow Wild Indigo</p> <p>Regional non-profit land trust dedicated to preserving the lands that define the coastal plains distinct landscape.</p>	<p>Harvesting Rattlesnake Master</p> <p>This center was established to conduct research and provide information focused on environmental problems of the Gulf Coast.</p>	<p>Switchgrass Breeders Block</p> <p>The farm is used for academic research, graduate and undergraduate classes, and houses the Nicholls State University Maritime Forest Preserve.</p>

Louisiana Native Plant Initiative Partners  
 Conservationists

