

Projects . Successes . Partnerships

 **NRCS** Louisiana  
**Conservation Update**  
United States Department of Agriculture . Natural Resources Conservation Service

United States Department of Agriculture . Natural Resources Conservation Service . Louisiana

July 2012



**Farming is a  
Family Tradition**  
Catahoula Parish Farming Family

**Ducks Unlimited Shares Report on  
Migratory Bird Habitat Initiative**

A cooperative partnership with local Soil and Water Conservation Districts and  
Resource Conservation and Development Councils (RC&D)

HELPING PEOPLE HELP THE LAND

**On the Cover**



Being in the field and around the equipment always seemed natural to Jorie Wade. Now she and her husband Aaron Wade are teaching their son Woodrow to love farming. Read more on pages 4 and 5.



**Table of Contents**

**Notes from the State Conservationist** .....3  
 Kevin Norton shares his thoughts

**Quote of the Month** .....3  
 "Farming is measured in generations. . ."

**Farming is a Family Tradition** ...4  
 Catahoula Parish turf farmer is featured

**Partner Report**.....6  
 Ducks Unlimited Biologist gives progress report on Migratory Bird Habitat Initiative

**USDA's Commitment to Equality** .....6  
 Referral guide for USDA settlements

**Around the State** .....7  
 Conservation news from around the state

**Contact Information** .....8  
 Call us with your questions



USDA  
 Natural Resources  
 Conservation Service  
 3737 Government Street  
 Alexandria, Louisiana 71302  
 (318) 473-7751

## Notes from the State Conservationist

### It is good to be back in Louisiana!

During the past few months, I have been on a detail assignment in Washington, DC, on Senator Debbie Stabenow's staff to help draft the conservation provisions of our nation's next Farm Bill. It was a tremendous experience for me, and I feel privileged to have had a part in this important process.

Considering what I have been working on in Washington, it is very appropriate that the first issue of **Conservation Update** upon my return focuses on the family farm. Family farms in the United States represent generations of Americans who have devoted their lives to cultivating the land, caring for livestock, and providing food and fiber for the world.

I grew up on a farm, and I contemplated many life lessons sitting on a tractor or at the business end of a hoe chopping weeds from peanuts and cotton fields. I learned how to take care of the land and how taking care of the land extended beyond the field boundaries to family life and communities.

Today, we enable farmers and ranchers make the right conservation choices for their land. Future generations of farmers are depending on us to make the right conservation choices—to leave a legacy of fertile soil and clean water—and the world is depending on us to get it right.

Conservation of our nation's natural resources is critical. Every day, the Natural Resources Conservation Service works with farmers and ranchers to help them protect, conserve, and enhance the natural resources of their farms and ranches. Please take a moment to visit one of our offices and learn how we can help you.

Kevin Norton  
State Conservationist  
Louisiana



### Quote of the Month

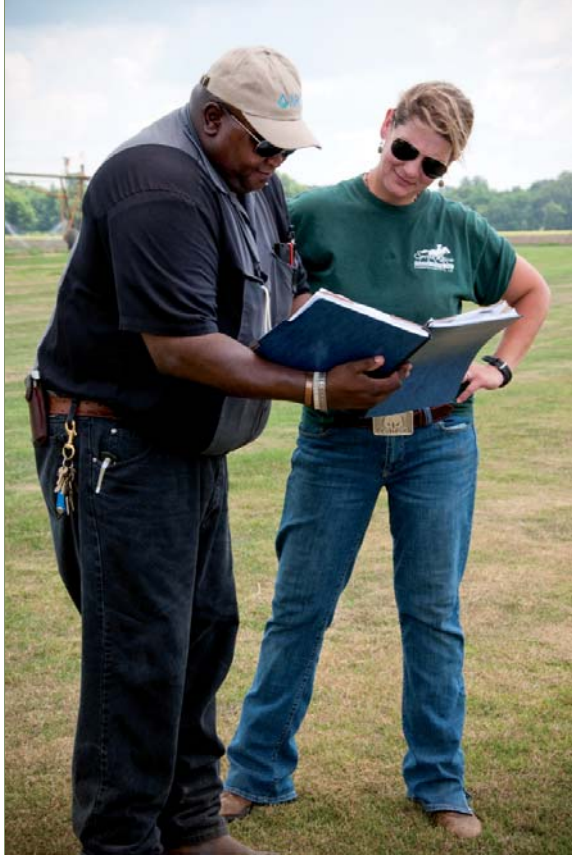
**“Farming is measured in generations. Farms are passed down from children to grandchildren. But a farm can only be successful if it has quality soil and clean water.”**

Senator Debbie Stabenow  
June 6, 2012, Congressional Record—Senate S3751  
Vol. 158, Washington, Wednesday, June 6, 2012, No. 84

The **Conservation Update** is distributed monthly by mail and e-mail.

If you would like to receive monthly issues of the **Conservation Update**, please send your mailing address or e-mail address to:

Holly Martien  
State Public Affairs Specialist  
USDA Natural Resources  
Conservation Service  
3737 Government Street  
Alexandria, Louisiana 71302  
or  
holly.martien@la.usda.gov



## Farming is a Family Trad

**“Being in the field and around all the equipment—especially combines and cotton pickers—always seemed natural and comfortable to me,”** said Jorie Wade. “When I came home from college and said I wanted to farm, my parents supported me and made it possible for me to become a farmer.”

Jorie Womack Wade grew up around farming but started learning in earnest from her father during the summer of 1994. She planted her first crop in 1995, and she hasn’t looked back since.

I grew up on my family’s farm and knew from the time I was a little kid that I wanted to be a farmer when I grew up.



Jorie’s parents, Buster and Alma Womack, made sure no corners were cut in her farming education.

“My father made sure I was familiar with EVERY aspect of farm work—from loading hoppers and hoeing weeds to planting cotton and marketing crops,” said Jorie.

“And my Uncle Kenneth McClure . . . well, let’s just say, he was very tolerant of a ‘green horn’—he taught me how to keep everything running!”

In 2006, Jorie married Aaron Wade, an independent turf grass producer. Two years later, their son Woodrow Womack Wade was born, and the farming family

tradition is continued by Woodrow, the bossman” Woodrow

“I am eternally grateful to my father. I have always known the system I have,” said Jorie, teaching Woodrow as much as we do.”

The Wade’s primary crop is turf, but you will also find corn on their farm—conservation practices

Aaron and Jorie Wade are in Woodrow’s future, conserving, and improving resources on their farm. the USDA Natural Resources

## Aaron, Jorie, and Woodrow Wade Conservationists

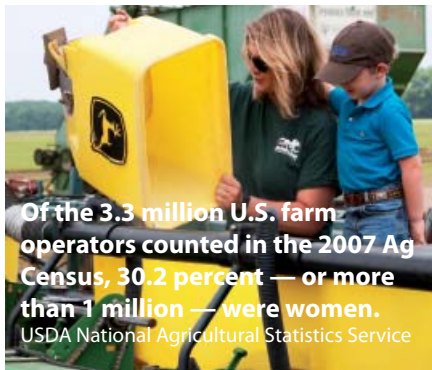


D & J Turf Grass Farm, Jonesville, Louisiana



# ition

Turf farms produce grass or sod specifically for the establishment of lawns. The sod is sold to landscapers, home builders, or home owners.



Of the 3.3 million U.S. farm operators counted in the 2007 Ag Census, 30.2 percent — or more than 1 million — were women. USDA National Agricultural Statistics Service



## Jorie Womack Wade

Catahoula Parish Farmer

ing with "little v.  
eful for the way of life n and the support Jorie. "Now, we are to love farming as

y crop is centipede so find cotton and —and you will find ices in action.

ade are investing e by protecting, mproving the natural farm. Working with esources

Conservation Service Jonesville Field Office and the Catahoula Soil and Water Conservation District, the Wades implemented nutrient management by soil mapping—based on electrical conductivity of the soil; nutrient management using swath management on spray equipment; ridge till to reduce soil erosion; and cover crops to reduce soil erosion, increase organic matter, and improve infiltration.

The Wades implemented conservation practices on their farm through the Environmental Quality Incentives Program and the Conservation Stewardship Program.

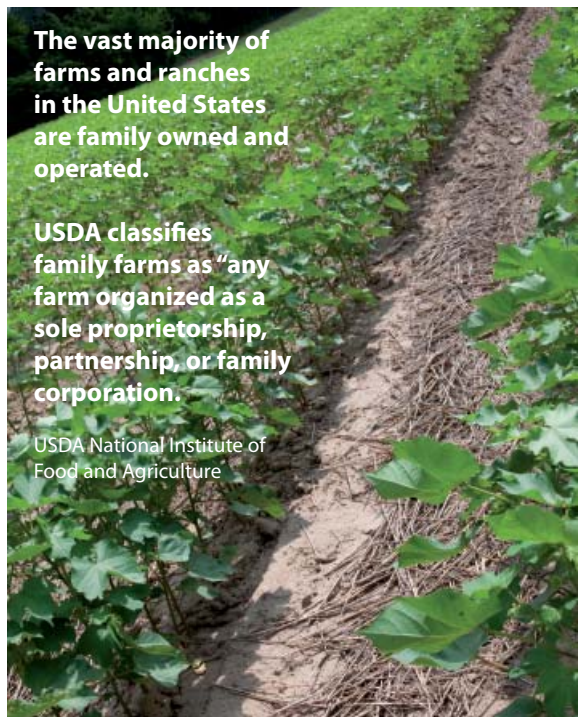
Jorie Wade's mother, Alma Womack, was a supervisor for the Catahoula Soil and Water Conservation District from 1985 to 2010. She was one of the first women district supervisors in Louisiana.

Aaron Wade is currently a supervisor for the Catahoula Soil and Water Conservation District.

**The vast majority of farms and ranches in the United States are family owned and operated.**

**USDA classifies family farms as "any farm organized as a sole proprietorship, partnership, or family corporation."**

USDA National Institute of Food and Agriculture



"I can't imagine any other way of life," said Jorie. "Farming is our family tradition."

# Partner Report:

Fields that were flooded were full of birds!

## Migratory Bird Habitat Initiative (MBHI)

From: Alicia Wiseman, Ducks Unlimited  
Biologist, South Louisiana Field Station  
Sent: Friday, July 06, 2012 1:54 PM  
Subject: Bird use on MBHI

This past week DU assisted Vermilion Parish NRCS office in conducting certifications on property enrolled in MBHI 2010 activity C-1 (maintain flood until July 15). Fields that were flooded were full of birds! These pictures are from two fields. The first had more than 200 birds--Black-necked stilt, Great Egrets, Snowy Egrets, Little Egret, Great Blue Heron, Yellow Crowned Night Heron, dark ibis (Glossy and White-faced), White Ibis, Roseate Spoonbill, and the only one I counted species specific--47 Wood Storks. It was pretty exciting! . . .

Ducks Unlimited (DU) is assisting the USDA Natural Resources Conservation Service with certifications on property enrolled in the Migratory Bird Habitat Initiative (MBHI) through a Strategic Watershed Assessment Team (SWAT). Assistance is also being provided through Ducks Unlimited's Rice Stewardship Program.

## USDA's Commitment to Equality

USDA believes every farmer and rancher should be treated equally and fairly, and we are committed to resolving all cases involving allegations of past discrimination by individuals.

### Referral Guide for USDA Settlements and Claims Adjudication Process

#### Women and Hispanic Farmers and Ranchers Claims Adjudication Process

If you believe that USDA improperly denied farm loan benefits to you for certain time periods between 1981 and 2000 because you are a female or because you are Hispanic, you may be eligible to apply for compensation. To request a claims package by telephone, call 1-888-508-4429. To request a claims package online, please visit [www.farmerclaims.gov](http://www.farmerclaims.gov)

#### Native American Farmer and Rancher Class Action Settlement (Keepseagle v. Vilsack)

If you are a Native American who was denied a farm loan or loan servicing by the USDA between January 1, 1981, and November 24, 1999, you may be eligible for benefits from a Class Action Settlement. To request a claims package by telephone, call: 1-888-233-5506. To request a claims package online, or for more information, please visit: [www.indianfarmclass.com](http://www.indianfarmclass.com)

#### African American Farmer and Rancher Class Action Settlement (Pigford II)

If you are an African American farmer (a) who submitted a request to file a late claim on or between October 13, 1999, and June 18, 2008, under the 1999 USDA settlement in the earlier class action known as Pigford v. Glickman ("Pigford") and (b) who did not receive a merits determination on your discrimination claim, you may be eligible for benefits from a Class Action Settlement. To hear information by telephone, call 1-866-950-5547 or 1-866-472-7826. To find information online, please visit: [www.blackfarmercase.com](http://www.blackfarmercase.com)

## Jun 11-13

**Waste Tire Collection Event** - The Vermilion, Iberia, and Acadia Soil and Water Conservation Districts hosted the first Waste Tire Collection Event June 11-13, 2012. The event was held to promote conservation of natural resources, promote the importance of soil and water conservation districts, and assist the public in a needed service. Soil and water conservation districts collected 647 tires in Vermilion, 468 tires in Iberia, and 69 tires in Acadia out of ditches, yards, and fields. The collected tires will be recycled. Thanks are given to all who took the time to participate in the event. Special recognition is given to Kyle Soileau with Louisiana Department of Agriculture and Forestry and the Abbeville and Crowley Natural Resources Conservation Service field office personnel for their participation and assistance.



## Jun 22

**BAYOU Students Visit Plant Materials Center** - On Friday, June 22, 2012, the Louisiana Chapter of the National Organization for Professional Black NRCS Employees (NOPBNRCSE) along with the Natural Resources Conservation Service, and the Golden Meadow Plant Materials Center hosted the 2012 Exploring Opportunities in Agricultural, Family and Consumer Sciences Beginning Agricultural Youth Opportunities Unlimited (BAYOU) Program with students from Southern University in Baton Rouge. The BAYOU Program is the umbrella for all student services and professional development activities within Southern Universities College of Agricultural, Family and Consumer Sciences. Seventeen students participated in this year's BAYOU Program. Most students were recent high school graduates from throughout Louisiana, with a few from Texas, Georgia, and California. The group learned about the history of the Natural Resources Conservation Service, the Plant Materials Program, the soil survey program, and coastal conservation plantings.

## Jun 28

**Ouachita Parish Cattleman's Association** - On June 28, 2012, James Shivers, NRCS District Conservationist, met with 25 livestock producers at a Ouachita Parish Cattleman's Association meeting to present information on USDA NRCS conservation practices and programs. Shivers specifically discussed the "Forage and Biomass Planting" conservation practice (clover planting) and the uniqueness of each producer's operation. An LSU AgCenter Extension Service presented information about different varieties of clovers and their respective yields.

# Around the State



## Jul 13

**Farmer and Rancher Appreciation Banquet - 2012 Conservationist of the Year Award** - The St. Mary Soil and Water Conservation District (SWCD) hosted its 2nd Annual Farmer and Rancher Appreciation Banquet on Friday, July 13, 2012, in Centerville, Louisiana. Special guest speakers included Louisiana Department of Agriculture and Forestry Commissioner Mike Strain; Kevin Norton, USDA Natural Resources Conservation Service (NRCS) State Conservationist; Brad Spicer, Louisiana Department of Agriculture and Forestry Assistant Commissioner-Soil and Water; State Representative Sam Jones; State Senator Bret Allain; Scott Edwards, USDA NRCS State Resource Conservationist; and Stuart Gardner, NRCS Rangeland Management Specialist. The St. Mary SWCD 2012 Conservationist of the Year Award was presented to Blanchard Brothers, Inc. The Blanchard family has independently implemented conservation practices such as crop rotation, cover crops, nutrient management, pest management, row arrangement, precision land forming, seasonal residue management, and grade stabilization structures to ensure good soil conservation. They are currently working

with NRCS and the St. Mary Soil and Water Conservation District to develop a Resource Management System (RMS) conservation plan as part of the Louisiana Master Farmer Program. The Blanchards will be featured on a nationally televised Public Broadcasting Service television series "America's Heartland" in the fall of this year.



# Contact Our Offices

Parish	Field Office	Soil and Water Conservation District	Address	Telephone
Acadia	Crowley	Acadia SWCD	157 Cherokee Drive, Suite C, Crowley, LA 70526	(337) 783-5823, ext. 3
Allen	Oberlin	Allen SWCD	309 North 1st Street, Suite 1, Oberlin, LA 70655	(337) 639-4850, ext. 3
Ascension	Donaldsonville	Lower Delta SWCD and New River SWCD	2274 Highway 70, Suite C, Donaldsonville, LA 70346	(225) 473-7638, ext. 3
Assumption	Donaldsonville	Lower Delta SWCD	2274 Highway 70, Suite C, Donaldsonville, LA 70346	(225) 473-7638, ext. 3
Avoyelles	Marksville	Avoyelles SWCD	629 Tunica Drive West, Marksville, LA 71351	(318) 253-9445, ext. 3
Beauregard	DeRidder	Calcasieu SWCD	597 Mahlon Street, Suite B, DeRidder, LA 70634	(337) 463-8555, ext. 3
Bienville	Minden	Saline SWCD	216B Broadway, Minden, LA 71055	(318) 377-3950, ext. 3
Bossier	Benton	Bodcau SWCD	200 Burt Boulevard, Suite 101, Benton, LA 71006-4901	(318) 965-2185, ext. 3
Caddo	Shreveport	Caddo SWCD	1402 Hawn Avenue, Shreveport, LA 71107	(318) 676-3461, ext. 3
Calcasieu	Lake Charles	Gulf Coast SWCD	1400 Highway 14, Suite B, Lake Charles, LA 70601	(337) 436-5020, ext. 3
Caldwell	Columbia	Boeuf and Dugdemona SWCD	7128 Highway 165 South, Suite 2, Columbia, LA 71418	(318) 649-2651, ext. 3
Cameron	Lake Charles	Gulf Coast SWCD	1400 Highway 14, Suite B, Lake Charles, LA 70601	(337) 436-5020, ext. 3
Catahoula	Jonesville	Catahoula SWCD	3545 4th Street, Jonesville, LA 71343	(318) 339-4239, ext. 3
Claiborne	Minden	D'Arbonne SWCD	216B Broadway, Minden, LA 71055	(318) 377-3950, ext. 3
Concordia	Ferriday	Tensas-Concordia SWCD	8331 Highway 84, Ferriday, LA 71334	(318) 757-2455, ext. 3
DeSoto	Mansfield	DeSoto SWCD	211 Washington Avenue, Mansfield, LA 71052	(318) 872-4949, ext. 3
East Baton Rouge	Denham Springs	Capital SWCD	2191 Tower Drive, Denham Springs, LA 70726	(225) 664-1430, ext. 3
East Carroll	Lake Providence	East Carroll SWCD	406 Lake Street, Suite C, Lake Providence, LA 71254	(318) 559-2604, ext. 3
East Feliciana	Clinton	Feliciana SWCD	9752 Plank Road South, Clinton, LA 70722	(225) 683-5496, ext. 3
Evangeline	Ville Platte	Evangeline SWCD	205 Court Street, Ville Platte, LA 70586	(337) 363-6602, ext. 3
Franklin	Winnsboro	Northeast SWCD	616 Riser Road, Winnsboro, LA 71295	(318) 435-6743, ext. 3
Grant	Colfax	Grant SWCD	510 Main Street, Colfax, LA 71417	(318) 627-9903, ext. 3
Iberia	New Iberia	Iberia SWCD	2617 Northside Road, Suite 600, New Iberia, LA 70563	(337) 369-6623, ext. 3
Iberville	Addis	Lower Delta SWCD	7747 Highway 1 South, Addis, LA 70710	(225) 687-2184, ext. 3
Jackson	Ruston	Dugdemona SWCD	1412 Celebrity Drive, Ruston, LA 71270	(318) 255-3136, ext. 3
Jefferson	Boutte	Crescent SWCD	14246 US Highway 90, Boutte, LA 70039	(985) 758-2162, ext. 3
Jefferson Davis	Jennings	Jefferson Davis SWCD	2003 Port Drive, Jennings, LA 70546	(337) 824-0975, ext. 3
Lafayette	Lafayette	Lafayette SWCD	905 Jefferson Street, Suite 310, Lafayette, LA 70501-7913	(337) 262-6601, ext. 3
Lafourche	Thibodaux	Lafourche-Terrebonne SWCD	143 Laura Drive, Thibodaux, LA 70301	(985) 447-3871, ext. 3
LaSalle	Jonesville	LaSalle SWCD	3545 4th Street, Jonesville, LA 71343	(318) 339-4239, ext. 3
Lincoln	Ruston	D'Arbonne SWCD	1412 Celebrity Drive, Ruston, LA 71270	(318) 255-3136, ext. 3
Livingston	Denham Springs	Capital SWCD	2191 Tower Drive, Denham Springs, LA 70726	(225) 664-1430, ext. 3
Madison	Tallulah	Madison SWCD	1900 Crothers Drive, Tallulah, LA 71282	(318) 574-4158, ext. 3
Morehouse	Bastrop	Morehouse SWCD	9604 Marlatt Street, Bastrop, LA 71220	(318) 283-7626, ext. 3
Natchitoches	Natchitoches	Natchitoches SWCD	6949 Louisiana Highway 1 Bypass, Natchitoches, LA 71457	(318) 357-8366, ext. 3
Orleans	Boutte	Crescent SWCD	14246 US Highway 90, Boutte, LA 70039	(985) 758-2162, ext. 3
Ouachita	Monroe	D'Arbonne/Boeuf River SWCD	2410 Old Sterlington Road, Suite B, Monroe, LA 71203-2668	(318) 343-4467, ext. 3
Plaquemines	Boutte	Plaquemines SWCD	14246 US Highway 90, Boutte, LA 70039	(985) 758-2162, ext. 3
Pointe Coupee	New Roads	Upper Delta SWCD	180 East Main Street, New Roads, LA 70760	(225) 638-7746, ext. 3
Rapides	Alexandria	Rapides SWCD	3734 Government Street, Building C, Alexandria, LA 71303	(318) 473-7856, ext. 3
Red River	Coushatta	Red River SWCD	1311 Ringgold Avenue, Coushatta, LA 71019	(318) 932-4352, ext. 3
Richland	Rayville	Boeuf River SWCD	141 Industrial Loop, Rayville, LA 71269	(318) 728-4451, ext. 3
Sabine	Many	Sabine SWCD	570 Highway 171 By Pass, Many, LA 71449	(318) 256-3491
St. Bernard	Boutte	Crescent SWCD	14246 US Highway 90, Boutte, LA 70039	(985) 758-2162, ext. 3
St. Charles	Boutte	Crescent SWCD	14246 US Highway 90, Boutte, LA 70039	(985) 758-2162, ext. 3
St. Helena	Amite	Tangipahoa-St. Helena SWCD	805 West Oak Street, Suite 1, Amite, LA 70422-2820	(985) 748-8751, ext. 3
St. James	Donaldsonville	Lower Delta SWCD and New River SWCD	2274 Highway 70, Suite C, Donaldsonville, LA 70346	(225) 473-7638, ext. 3
St. John	Boutte	Crescent SWCD	14246 US Highway 90, Boutte, LA 70039	(985) 758-2162, ext. 3
St. Landry	Opelousas	St. Landry SWCD	5832 I-49 North Service Road, Opelousas, LA 70570	(337) 942-2530, ext. 3
St. Martin	Lafayette	St. Martin SWCD	905 Jefferson Street, Suite 310, Lafayette, LA 70501-7913	(337) 262-6601, ext. 3
St. Mary	Franklin	St. Mary SWCD	500 Main Street, Franklin, LA 70538	(337) 828-1461, ext. 3
St. Tammany	Franklinton	Bogue Chitto-Pearl River SWCD	1111 Washington Street, Franklinton, LA 70438	(985) 839-5688, ext. 3
Tangipahoa	Amite	Tangipahoa-St. Helena SWCD	805 West Oak Street, Suite 1, Amite, LA 70422-2820	(985) 748-8751, ext. 3
Tensas	St. Joseph	Tensas-Concordia SWCD	1223 Plank Road, St. Joseph, LA 71366	(318) 766-3502, ext. 3
Terrebonne	Thibodaux	Lafourche-Terrebonne SWCD	143 Laura Drive, Thibodaux, LA 70301	(985) 447-3871, ext. 3
Union	Farmerville	D'Arbonne SWCD	604 East Water Street, Farmerville, LA 71241	(318) 368-8021
Vermilion	Abbeville	Vermilion SWCD	3221 Veterans Memorial Drive, Suite H, Abbeville, LA 70510	(337) 893-5664, ext. 3
Vernon	Leesville	Calcasieu SWCD	205 North 5th Street, Leesville, LA 71446	(337) 239-2193
Washington	Franklinton	Bogue Chitto-Pearl River SWCD	1111 Washington Street, Franklinton, LA 70438	(985) 839-5688, ext. 3
Webster	Minden	Dorcheat SWCD	216B Broadway, Minden, LA 71055	(318) 377-3950, ext. 3
West Baton Rouge	Addis	Upper Delta SWCD	7747 Highway 1, South, Addis, LA 70710	(225) 687-2184, ext. 3
West Carroll	Oak Grove	West Carroll SWCD	208 South Constitution Street, Oak Grove, LA 71263	(318) 428-9303, ext. 3
West Feliciana	Clinton	Feliciana SWCD	9752 Plank Road South, Clinton, LA 70722	(225) 683-5496, ext. 3
Winn	Natchitoches	Dugdemona SWCD	6949 Louisiana Highway 1 Bypass, Natchitoches, LA 71457	(318) 357-8366, ext. 3

Visit our web site at: [www.la.nrcs.usda.gov](http://www.la.nrcs.usda.gov)

The U.S. Department of Agriculture (USDA) prohibits discrimination in all its programs and activities on the basis of race, color, national origin, age, disability, and where applicable, sex, marital status, familial status, parental status, religion, sexual orientation, genetic information, political beliefs, reprisal, or because all or a part of an individual's income is derived from any public assistance program. (Not all prohibited bases apply to all programs.) Persons with disabilities who require alternative means for communication of program information (Braille, large print, audiotape, etc.) should contact USDA's TARGET Center at (202) 720-2600 (voice and TDD). To file a complaint of discrimination write to USDA, Director, Office of Civil Rights, 1400 Independence Avenue, S.W., Washington, D.C. 20250-9410 or call (800) 795-3272 (voice) or (202) 720-6382 (TDD). USDA is an equal opportunity provider and employer.

