



CARD A Pain Relievers

1



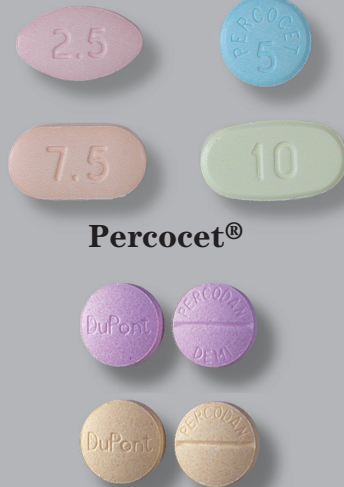
Darvocet-N[®]

Darvon[®]




Tylenol[®] with Codeine

2




Percocet[®]

Percodan[®]




Tylox[®]

3




Vicodin[®]

Lortab[®]



Lorcet[®]/Lorcet Plus[®]

4



Codeine

9



Hydrocodone

14



Propoxyphene

5



Demerol[®]

10



Methadone

15



SK-65[®]

6



Dilaudid[®]

11



Morphine

16

Stadol[®]

7



Fioricet[®]

12



OxyContin[®]

17




Talacen[®]

8



Fiorinal[®]

13



Phenaphen[®] with Codeine

18



Talwin[®]

19



Talwin[®] NX

20

Tramadol

21




Ultram[®]

CARD B

Tranquilizers

1



Klonopin®

Clonazepam

This panel shows two groups of pills. The top group, Klonopin, consists of orange, blue, and white round tablets with a stylized 'K' logo. The bottom group, Clonazepam, consists of yellow and green round tablets with the number '93' and '882'.

2



Xanax®


Alprazolam

Ativan®

Lorazepam

This panel shows three groups of pills. Xanax includes orange, blue, and white round tablets with 'XANAX' and 'ROCHE' markings. Alprazolam includes purple, orange, and blue oval tablets with '66' and '256' markings. Ativan includes white hexagonal tablets with 'WYETH' and '64' markings. Lorazepam includes white round tablets with 'M', '321', and '1/2' markings.

3



Valium®

Diazepam

This panel shows two groups of pills. Valium includes white, gold, and blue round tablets with a heart-shaped logo and 'WYETH' markings. Diazepam includes white, yellow, and blue round tablets with '555' and '163' markings.

4



Atarax®

This panel shows four triangular tablets in orange, dark blue, yellow, and purple colors.

8



Librium®

This panel shows three capsules: yellow and green, black and green, and white and green, with 'LIBRIUM' and 'ROCHE' markings.

13



Serax®

This panel shows three capsules (pink, red, and blue) and two yellow hexagonal tablets with 'WYETH' and '317' markings.

5



BuSpar®

This panel shows two groups of white tablets. The top group has 'BUSPAR' and 'MJ 5' or 'MJ 10' markings. The bottom group has 'MJ 822' or 'MJ 824' markings, and '5 5 5' or '10 10 10' markings.


9



Limbitrol®

This panel shows two round tablets, one white and one blue, with 'LIMBITROL' and '20' markings.

14



Soma®

This panel shows two white round tablets with 'SOMA' and 'WALLACE 2001' markings.

6



Equanil®

This panel shows three pills: a brown and white capsule with 'WYETH' and '44' markings, a white round tablet with 'WYETH' markings, and a yellow round tablet with '33' markings.

10



Meprobamate

This panel shows one white round tablet with '717' markings.

15



Tranxene®

This panel shows two groups of pills. The top group has purple, light purple, pink, and light pink triangular tablets. The bottom group has pink, light pink, blue, and brown round tablets.

11



Miltown®

This panel shows three white round tablets with 'WALLACE' and '1001' or '37-1901' markings.

16



Vistaril®

This panel shows three capsules: white and green, green and white, and purple and white.

7



Flexeril®

This panel shows four yellow, house-shaped tablets with '10' and '20' markings.

12



Rohypnol®

This panel shows two white round tablets with 'ROHYPNOL' and '1' markings.

CARD C Stimulants

1

(picture not available)
Methamphetamine
("speed" or "ice" or
"crank")



Desoxyn®

(picture not available)
Methedrine

2

Amphetamines



Benzedrine®



Biphedamine®



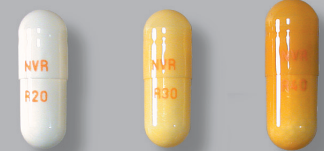
Fastin®



Phentermine



3



Ritalin®



Methylphenidate



4



Cylert®

8



Eskatrol®

12



Plegine®

5



Dexedrine®

9



Ionamin®

13



Preludin®

6 **Dextroamphetamine**

10



Mazanor®

14



Sanorex®

7

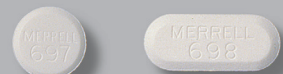


Didrex®

11

Obedrin-LA®

15



Tenuate®

CARD D Sedatives

1

(picture not available)
Methaqualone
(includes Sopor®,
Quaalude®)

2



Nembutal® Sodium

(picture not available)
Pentobarbital



Seconal®

(picture not available)
Secobarbital

(picture not available)
Butalbital

3



Restoril®



Temazepam

4



Amytal®

7



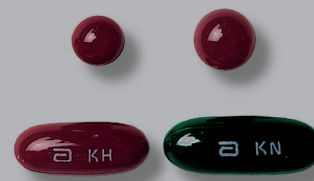
Dalmane®

8



Halcion®

10



Placidyl®

5



Butisol®

9



Phenobarbital

11



Tuinal®

6

Chloral Hydrate