

# **2008 National Survey on Drug Use and Health**

## **SHOWCARD BOOKLET**

**RESEARCH TRIANGLE INSTITUTE**

## Supervisor Contacts

FS Name ..... \_\_\_\_\_

FS Number..... ( \_\_\_\_\_ ) \_\_\_\_\_

RS Name ..... \_\_\_\_\_

RS Number ..... ( \_\_\_\_\_ ) \_\_\_\_\_

## RTI Telephone Numbers

Tech Support ..... (    )

Headway..... (    )

To reach other RTI staff, call toll-free  
then ask the operator for the employee with whom you  
wish to speak.

## Website Addresses

NSDUH..... <http://nsduhweb.rti.org>

RTI..... <http://www.rti.org>

SAMHSA..... <http://www.samhsa.gov>



DEPARTMENT OF HEALTH & HUMAN SERVICES

---

**U.S. Public Health Service**

Office of Applied Studies

Rockville, MD 20857

\_\_\_\_\_, 2008

Dear Resident:

To better serve all people across the nation, the United States Public Health Service (USPHS) is conducting a national study on health-related issues. Your address was randomly chosen along with more than 200,000 others. Research Triangle Institute (RTI) is under contract to carry out this study for the USPHS. Soon, an RTI interviewer will be in your neighborhood to give you more information.

When the interviewer arrives, please ask to see his or her personal identification card. An example of the ID card is shown below. The interviewer will ask you a few questions, and then may ask one or two members of your household to complete an interview. It is possible that no one from your household will be chosen to be interviewed. You may choose not to take part in this study, but no one else can take your place. **Every person who is chosen and completes the interview will receive \$30 in cash.**

All the information collected is confidential and will be used only for statistical purposes. This is assured by federal law. This letter is addressed to "Resident" because your address was selected, and we do not know your name. Feel free to ask the interviewer any questions you have about the study.

Your help is very important to this study's success. Thank you for your cooperation.

Sincerely,

National Study Director,  
Office of Applied Studies

"Image of Identification Badge"

National Field Director, RTI

\_\_\_\_\_  
Assigned Field Interviewer



# Study Description

## Public Health Service Office of Applied Studies

Your address is one of several in this area randomly chosen for the 2008 National Survey on Drug Use and Health. This study, sponsored by the United States Public Health Service, collects information for research and program planning by asking about:

- tobacco, alcohol, and drug use or non-use,
- knowledge and attitudes about drugs,
- mental health, and
- other health issues.

You cannot be identified through any information you give us. Your name and address will never be connected to your answers. Also, federal law requires us to keep all of your answers confidential. Any data that you provide will only be used by authorized personnel for statistical purposes according to the Confidential Information Protection and Statistical Efficiency Act of 2002.

The screening questions take just a few minutes. If anyone is chosen, the interview will take about an hour. You can refuse to answer any questions, and you can quit at any time. **Each person who is chosen and completes the interview will receive \$30 in cash.**

If you have questions about the study, call the Project Representative at

If you have questions about your rights as a study participant, call RTI's Office of Research Protection at (a toll-free number). You can also visit our project Website: <http://nsduhweb.rti.org/> for more information.

Thank you for your cooperation and time.

Project Officer  
Office of Applied Studies  
Substance Abuse and Mental Health Services Administration (SAMHSA)  
U.S. Public Health Service  
Department of Health and Human Services

Your confidentiality is protected by the Confidential Information Protection and Statistical Efficiency Act of 2002 (CIPSEA, PL 107-347). Any project staff or authorized data user who violates CIPSEA may be subject to a jail term of up to 5 years, a fine of up to \$250,000, or both.

## INTRODUCTION AND INFORMED CONSENT FOR INTERVIEW RESPONDENTS AGE 18+

**IF INTERVIEW RESPONDENT IS NOT SCREENING RESPONDENT,**  
INTRODUCE YOURSELF AND STUDY AS NECESSARY: Hello, I'm \_\_\_\_\_,  
and I'm working on a nationwide study sponsored by the U.S. Public Health  
Service. You should have received a letter about this study. (SHOW LEAD  
LETTER, IF NECESSARY.)

### READ THE BOXED INFORMATION BELOW BEFORE STARTING EVERY INTERVIEW

This year, we are interviewing about 70,000 people across the nation. You have been randomly chosen to take part. You will represent over 4,500 other people who are similar to you. You may choose not to take part in this study, but no one else can take your place. We will pay you \$30 when you finish the interview.

#### **GIVE STUDY DESCRIPTION TO R IF YOU HAVE NOT ALREADY DONE SO.**

This study asks about tobacco, alcohol, and drug use or non-use, knowledge and attitudes about drugs, mental health, and other health issues. It takes about an hour. You will answer most of the questions on the computer, so I will not see your answers. We are only interested in the combined responses from all 70,000 people, not just one person's answers. This is why we do not ask for your name and we keep your answers separate from your address. RTI may contact you by phone or mail to ask a few questions about the quality of my work. This is why we ask for your phone number and mailing address at the end of the interview.

While the interview has some personal questions, federal law keeps your answers private. We hope that protecting your privacy will help you to give accurate answers. You can quit the interview at any time and you can refuse to answer any questions.

If it is all right with you, let's get started.

(Can we find a private place to complete the interview?)

# **INTRODUCTION AND INFORMED CONSENT FOR INTERVIEW RESPONDENTS AGE 12-17**

## **FIRST, OBTAIN PERMISSION FROM THE PARENT AND READ THE BOXED INFORMATION BELOW**

Your (AGE) year-old child has been selected to be in this study. Your child's participation is voluntary. This interview asks about tobacco, alcohol, and drug use or non-use, knowledge and attitudes about drugs, mental health, and other health related issues. All of your child's answers will be confidential and used only for statistical purposes. Since your child will answer most of the questions on the computer, I will never see the answers, and you are not allowed to see them either. If it is all right with you, we'll get started.

(Can we find a private place to complete the interview?)

## **THEN, READ THE BOXED INFORMATION BELOW BEFORE STARTING EVERY INTERVIEW WITH A 12-17 YEAR OLD**

This year, we are interviewing about 70,000 people across the nation. You have been randomly chosen to take part. You will represent over 1,000 young people in this country who are similar to you. You may choose not to take part in this study, but no one else can take your place. We will pay you \$30 when you finish the interview.

### **GIVE STUDY DESCRIPTION TO R IF YOU HAVE NOT ALREADY DONE SO.**

This study asks about tobacco, alcohol, and drug use or non-use, knowledge and attitudes about drugs, mental health, and other health issues. It takes about one hour. You will answer most of the questions on the computer, so I will not see your answers. Your answers will never be seen by either your parents or your school. We are only interested in the combined responses from all 70,000 people, not just one person's answers. This is why we do not ask for your name and we keep your answers separate from your address. RTI may contact you by phone or mail to ask a few questions about the quality of my work. This is why we ask for your phone number and mailing address at the end of the interview.

While the interview has some personal questions, federal law keeps your answers private. We hope that protecting your privacy will help you to give accurate answers. You can quit the interview at any time and you can refuse to answer any questions.

If it is all right with you, let's get started.

## SHOWCARD 1

- 1 MEXICAN, MEXICAN AMERICAN, MEXICANO OR CHICANO
- 2 PUERTO RICAN
- 3 CENTRAL OR SOUTH AMERICAN
- 4 CUBAN OR CUBAN AMERICAN
- 5 DOMINICAN (FROM DOMINICAN REPUBLIC)
- 6 SPANISH (FROM SPAIN)

## SHOWCARD 2

- 1 WHITE
- 2 BLACK OR AFRICAN AMERICAN
- 3 AMERICAN INDIAN OR ALASKA NATIVE  
(AMERICAN INDIAN INCLUDES NORTH  
AMERICAN, CENTRAL AMERICAN, AND SOUTH  
AMERICAN INDIANS)
- 4 NATIVE HAWAIIAN
- 5 OTHER PACIFIC ISLANDER
- 6 ASIAN (INCLUDING: ASIAN INDIAN, CHINESE,  
FILIPINO, JAPANESE, KOREAN, AND  
VIETNAMESE)



## SHOWCARD 3

1 ASIAN INDIAN

2 CHINESE

3 FILIPINO

4 JAPANESE

5 KOREAN

6 VIETNAMESE

## SHOWCARD 4

0 NEVER ATTENDED SCHOOL

### PRIMARY AND SECONDARY GRADES:

- 1 1<sup>ST</sup> GRADE COMPLETED
- 2 2<sup>ND</sup> GRADE COMPLETED
- 3 3<sup>RD</sup> GRADE COMPLETED
- 4 4<sup>TH</sup> GRADE COMPLETED
- 5 5<sup>TH</sup> GRADE COMPLETED
- 6 6<sup>TH</sup> GRADE COMPLETED
- 7 7<sup>TH</sup> GRADE COMPLETED
- 8 8<sup>TH</sup> GRADE COMPLETED
- 9 9<sup>TH</sup> GRADE COMPLETED
- 10 10<sup>TH</sup> GRADE COMPLETED
- 11 11<sup>TH</sup> GRADE COMPLETED
- 12 12<sup>TH</sup> GRADE COMPLETED

### COLLEGE OR UNIVERSITY:

- 13 1<sup>ST</sup> YEAR COMPLETED
- 14 2<sup>ND</sup> YEAR COMPLETED
- 15 3<sup>RD</sup> YEAR COMPLETED
- 16 4<sup>TH</sup> YEAR COMPLETED
- 17 5<sup>TH</sup> OR HIGHER YEAR COMPLETED

## SHOWCARD 5

### PRIMARY AND SECONDARY GRADES:

- 1 1<sup>ST</sup> GRADE
- 2 2<sup>ND</sup> GRADE
- 3 3<sup>RD</sup> GRADE
- 4 4<sup>TH</sup> GRADE
- 5 5<sup>TH</sup> GRADE
- 6 6<sup>TH</sup> GRADE
- 7 7<sup>TH</sup> GRADE
- 8 8<sup>TH</sup> GRADE
- 9 9<sup>TH</sup> GRADE
- 10 10<sup>TH</sup> GRADE
- 11 11<sup>TH</sup> GRADE
- 12 12<sup>TH</sup> GRADE

### COLLEGE OR UNIVERSITY:

- 13 1<sup>ST</sup> YEAR
- 14 2<sup>ND</sup> YEAR
- 15 3<sup>RD</sup> YEAR
- 16 4<sup>TH</sup> YEAR
- 17 5<sup>TH</sup> YEAR OR HIGHER

## SHOWCARD 6

- 1 SCHOOL WAS BORING OR I DIDN'T WANT TO BE THERE
- 2 I GOT PREGNANT / I GOT SOMEONE PREGNANT
- 3 I GOT IN TROUBLE OR EXPELLED FOR SELLING DRUGS
- 4 I GOT IN TROUBLE OR EXPELLED FOR USING DRUGS
- 5 I GOT IN TROUBLE OR EXPELLED FOR SOME OTHER REASON
- 6 I OFTEN GOT INTO TROUBLE
- 7 I HAD TO GET A JOB (OR WORK MORE HOURS)
- 8 I WAS GETTING BAD GRADES
- 9 I WASN'T LEARNING ANYTHING
- 10 I GOT MARRIED OR MOVED IN WITH MY BOY/GIRLFRIEND
- 11 I MOVED HERE FROM ANOTHER COUNTRY AND DIDN'T ENROLL IN SCHOOL (OR DROPPED OUT OF SCHOOL) BECAUSE OF LANGUAGE OR OTHER PROBLEMS
- 12 I WAS TREATED BADLY AT SCHOOL
- 13 I BECAME ILL OR INJURED
- 14 I WENT TO JAIL / PRISON
- 15 I HAD RESPONSIBILITIES AT HOME OR PERSONAL PROBLEMS

## SHOWCARD 7

- 1 MANUFACTURING
- 2 WHOLESALE TRADE
- 3 RETAIL TRADE
- 4 AGRICULTURE
- 5 CONSTRUCTION
- 6 SERVICE
- 7 GOVERNMENT

## SHOWCARD 8

- 1 PRIVATE FOR-PROFIT COMPANY OR BUSINESS
- 2 PRIVATE NOT-FOR-PROFIT COMPANY OR BUSINESS
- 3 LOCAL GOVERNMENT (CITY, COUNTY, ETC.)
- 4 STATE GOVERNMENT
- 5 FEDERAL GOVERNMENT
- 6 INTERNATIONAL OR FOREIGN GOVERNMENT
- 7 SELF-EMPLOYED IN AN INCORPORATED BUSINESS
- 8 SELF-EMPLOYED IN AN UNINCORPORATED BUSINESS
- 9 WORKING WITHOUT PAY IN A FAMILY BUSINESS OR FARM

## SHOWCARD 9

- 1 ON VACATION, SICK, FURLOUGH, STRIKE, OR OTHER TEMPORARY ABSENCE
- 2 ON LAYOFF AND NOT LOOKING FOR WORK
- 3 ON LAYOFF AND LOOKING FOR WORK
- 4 WAITING TO REPORT TO A NEW JOB
- 5 SELF-EMPLOYED AND DID NOT HAVE ANY BUSINESS LAST WEEK
- 6 GOING TO SCHOOL OR TRAINING

## SHOWCARD 10

- 1    LOOKING FOR WORK
- 2    ON LAYOFF AND NOT LOOKING FOR WORK
- 3    KEEPING HOUSE OR CARING FOR CHILDREN  
      FULL-TIME
- 4    GOING TO SCHOOL OR TRAINING
- 5    RETIRED
- 6    DISABLED FOR WORK
- 7    DIDN'T WANT A JOB



## SHOWCARD 11

- 1 LESS THAN 10 PEOPLE
- 2 10-24 PEOPLE
- 3 25-99 PEOPLE
- 4 100-499 PEOPLE
- 5 500 PEOPLE OR MORE

## SHOWCARD 12

- 1 HANDLED ON AN INDIVIDUAL BASIS/POLICY  
DOES NOT SPECIFY WHAT HAPPENS
- 2 EMPLOYEE IS FIRED
- 3 EMPLOYEE IS REFERRED FOR TREATMENT  
OR COUNSELING
- 4 NOTHING HAPPENS
- 5 SOMETHING ELSE HAPPENS

## SHOWCARD 13

- 1 SELF
- 2 FATHER (INCLUDES STEP, FOSTER, ADOPTIVE)
- 3 SON (INCLUDES STEP, FOSTER, ADOPTIVE)
- 4 BROTHER (INCLUDES HALF, STEP, FOSTER, ADOPTIVE)
- 5 HUSBAND
- 6 UNMARRIED PARTNER
- 7 HOUSEMATE OR ROOMMATE
- 8 SON-IN-LAW
- 9 GRANDSON
- 10 FATHER-IN-LAW
- 11 GRANDFATHER
- 12 BOARDER OR ROOMER
- 13 OTHER RELATIVE
- 14 OTHER NON-RELATIVE

## SHOWCARD 14

- 1 SELF
- 2 MOTHER (INCLUDES STEP, FOSTER, ADOPTIVE)
- 3 DAUGHTER (INCLUDES STEP, FOSTER, ADOPTIVE)
- 4 SISTER (INCLUDES HALF, STEP, FOSTER, ADOPTIVE)
- 5 WIFE
- 6 UNMARRIED PARTNER
- 7 HOUSEMATE OR ROOMMATE
- 8 DAUGHTER-IN-LAW
- 9 GRANDDAUGHTER
- 10 MOTHER-IN-LAW
- 11 GRANDMOTHER
- 12 BOARDER OR ROOMER
- 13 OTHER RELATIVE
- 14 OTHER NON-RELATIVE

## SHOWCARD 15

- 1 PERSON IN FAMILY WITH HEALTH INSURANCE LOST JOB OR CHANGED EMPLOYERS
- 2 LOST MEDICAID OR MEDICAL ASSISTANCE COVERAGE BECAUSE OF NEW JOB OR INCREASE IN INCOME
- 3 LOST MEDICAID OR MEDICAL ASSISTANCE COVERAGE FOR SOME OTHER REASON
- 4 COST IS TOO HIGH / CAN'T AFFORD PREMIUMS
- 5 BECAME INELIGIBLE BECAUSE OF AGE OR LEAVING SCHOOL
- 6 EMPLOYER DOES NOT OFFER COVERAGE, OR NOT ELIGIBLE FOR COVERAGE
- 7 GOT DIVORCED OR SEPARATED FROM PERSON WITH INSURANCE
- 8 DEATH OF SPOUSE OR PARENT
- 9 INSURANCE COMPANY REFUSED COVERAGE
- 10 DON'T NEED IT
- 11 RECEIVED MEDICAID OR MEDICAL INSURANCE ONLY WHILE PREGNANT

## SHOWCARD 16

- 1 COST IS TOO HIGH / CAN'T AFFORD PREMIUMS
- 2 EMPLOYER DOES NOT OFFER COVERAGE, OR  
NOT ELIGIBLE FOR COVERAGE
- 3 INSURANCE COMPANY REFUSED COVERAGE
- 4 DON'T NEED IT

## SHOWCARD 16a

- 1 VETERAN'S ADMINISTRATION PAYMENTS
- 2 OTHER DISABILITY, RETIREMENT OR SURVIVOR PENSION
- 3 UNEMPLOYMENT OR WORKER'S COMPENSATION
- 4 INTEREST INCOME
- 5 DIVIDENDS FROM STOCKS OR MUTUAL FUNDS
- 6 INCOME FROM RENTAL PROPERTIES, ROYALTIES, ESTATES OR TRUSTS
- 7 ALIMONY
- 8 CHILD SUPPORT

## SHOWCARD 17

- 1 LESS THAN \$1,000 (INCLUDING LOSS)
- 2 \$1,000 - \$1,999
- 3 \$2,000 - \$2,999
- 4 \$3,000 - \$3,999
- 5 \$4,000 - \$4,999
- 6 \$5,000 - \$5,999
- 7 \$6,000 - \$6,999
- 8 \$7,000 - \$7,999
- 9 \$8,000 - \$8,999
- 10 \$9,000 - \$9,999
- 11 \$10,000 - \$10,999
- 12 \$11,000 - \$11,999
- 13 \$12,000 - \$12,999
- 14 \$13,000 - \$13,999
- 15 \$14,000 - \$14,999
- 16 \$15,000 - \$15,999
- 17 \$16,000 - \$16,999
- 18 \$17,000 - \$17,999
- 19 \$18,000 - \$18,999
- 20 \$19,000 - \$19,999



## SHOWCARD 18

- 21 \$20,000 - \$24,999
- 22 \$25,000 - \$29,999
- 23 \$30,000 - \$34,999
- 24 \$35,000 - \$39,999
- 25 \$40,000 - \$44,999
- 26 \$45,000 - \$49,999
- 27 \$50,000 - \$74,999
- 28 \$75,000 - \$99,999
- 29 \$100,000 OR MORE

# *2008 National Survey on Drug Use and Health*

## **Summary of the Questionnaire**

You have asked to know more about the *National Survey on Drug Use and Health* and the types of questions the interviewer will ask. Below is a summary of each section of the questionnaire for you to examine. Keep in mind that not everyone will see every question—the questions depend on the participant's own experiences. Furthermore, participants can always refuse to answer any questions during the interview.

### **Demographics**

This section, administered by the interviewer, consists of questions about the participant such as his/her date of birth, race, educational background, and health status.

#### *Sample Questions:*

- ▶ What is the highest grade or year of school you have **completed**?
- ▶ Would you say your health in general is excellent, very good, good, fair, or poor?

### **Computer Practice Session**

In this section, the interviewer shows the participant how to use the laptop computer and lets him/her practice using a short practice session.

### **Cigarettes, Alcohol and Illicit Drugs**

For most of the rest of the interview, the participant answers questions by listening to the questions over the headphones and/or reading the questions on the computer screen, and then entering responses using the computer's keyboard. The participant answers these questions in private, although the interviewer is available to help with any problems using the computer. During this part of the interview, only the participant can hear and see the questions and see his/her responses.

#### Tobacco Products and Alcohol

These sections include questions about whether and how often participants have used cigarettes, chewing tobacco, snuff, cigars, pipe tobacco, and alcoholic beverages such as beer, wine, or liquor.

#### *Sample Questions:*

- ▶ Have you **ever** smoked part or all of a cigarette?
- ▶ How old were you the **first time** you used chewing tobacco?
- ▶ What is your **best estimate** of the number of days you drank alcohol during the past 30 days?

#### Illicit Drugs

The next sections ask about the participant's use or non-use of marijuana, heroin, cocaine, hallucinogens, and inhalants; and prescription pain killers, tranquilizers, stimulants, and sedatives when taken only for their effect. Questions about drug dependence and drug treatment are also included in these sections.

#### *Sample Questions:*

- ▶ Have you **ever**, even once, used marijuana or hashish?
- ▶ How much do people risk harming themselves physically and in other ways when they use **cocaine once a month**?

### **Adult Social Environment and Mental Health**

Participants aged 18 and older receive questions about their social experiences such as: how many times they have moved, their opinions about drug use, and in some cases, their experiences as a parent. Mental health questions cover such topics as depression and treatment for mental health problems.

#### *Sample Questions:*

- ▶ How do you feel about **adults** trying marijuana or hashish once or twice?
- ▶ During the past 12 months, was there any time when you **needed** mental health treatment or counseling for yourself but **didn't get it**?
- ▶ Have you ever in your life had a period of time lasting several days or longer when **most of the day** you felt **sad, empty, or depressed**?

### **Youth Experiences and Mental Health**

Youth aged 12-17 participating in the survey are also asked questions about their social experiences such as: perceptions about the risks of using certain drugs; whether getting drugs is difficult or easy; feelings about school and peers; and involvement in clubs, sports, and other extracurricular activities. The mental health questions cover such topics as depression and treatment for mental health problems.

#### *Sample Questions:*

- ▶ **During the past 12 months**, in how many different kinds of school-based activities, such as team sports, cheerleading, choir, band, student government, or clubs, have you participated?
- ▶ Have you ever in your life had a period of time lasting several days or longer when **most of the day** you felt **sad, empty, or depressed**?
- ▶ During the past 12 months, did you receive treatment or counseling from a **private therapist, psychologist, psychiatrist, social worker, or counselor** for emotional or behavioral problems that were **not** caused by alcohol or drugs?

### **Health Care and Demographic Information**

In this section, the laptop is handed back to the interviewer, who asks questions about education, health insurance, and family income information to help in analyzing the data. If necessary, a knowledgeable adult in the household may be asked to help participants answer some of these questions.

The answers to these questions increase the government's knowledge about health care, especially as it may relate to drug use or treatment. This information helps in planning health care services and finding ways to lower the costs of care.

#### *Sample Questions:*

- ▶ How many hours did you work **last week** at all jobs or businesses?
- ▶ **Before taxes and other deductions**, was the total **combined family** income during 2007 more or less than 20,000 dollars?
- ▶ Are you currently covered by private health insurance?

Please feel free to ask the interviewer if you have any other questions about the questionnaire.

*Thank you for your cooperation and help!*

# Enumeration Rules

## PERSONS WHO ARE NOT TO BE INCLUDED ON ROSTER:

- Persons under the age of 12 at the time of screening (do count them in the total SDU Members number)
- Persons who are institutionalized at the time of screening
- Persons who will not live at the SDU for most of the time during the quarter

## PERSONS WHO ARE TO BE INCLUDED ON ROSTER:

- Persons who will live at the SDU for most of the time during the quarter (provided they are 12 or older and not institutionalized at the time of screening)

## PERSONS ON ACTIVE DUTY IN THE MILITARY/ARMED FORCES:

- Active duty personnel who live at the SDU for half or more of the quarter will be rostered, but then will be made ineligible by the iPAQ prior to selection

## KNOWN CITIZENS OF FOREIGN COUNTRIES:

- **DO NOT INCLUDE:**
  - citizens of foreign countries living on the premises of an embassy, ministry, legation, chancellery, or consulate
  - citizens of foreign countries who consider themselves to be just visiting or traveling in the United States (regardless of the length of time they will be staying at the SDU)
- **DO INCLUDE citizens of foreign countries who are not living on the premises of an embassy, ministry, etc., but who are living/studying/working in the United States and who will be living at the SDU for most of the time during the quarter.**

# Steps to Maximize Data Quality

This summary is not a replacement for information contained in your FI Manual, but is a listing of some of our most crucial protocols that must be followed. Be sure that you follow each of these at all times.

Note the FI Manual pages referenced with each key point. Keep in mind that the below protocols are not the only steps that are necessary to follow. Use your FI Manual, Field Supervisor, and project e-mails for information on additional steps to maximize data quality.

## Screening

- Use your segment maps, and not just the address, to locate your selected DUs. [FI Manual p. 3-22]
- Display your ID badge when knocking on every door in your segment. [FI Manual pgs. 4-14 and 5-1]
- Complete screenings in-person with a resident who is 18 or older. The only exception is in the case of emancipated minors. [FI Manual p. 4-15]
- Give a Study Description to each SR. [FI Manual p. 4-16]
- Obtain complete and accurate screening information, reading the screening questions verbatim to the SR and immediately entering responses into the iPAQ. The only missing screening data should be a result of the respondent's refusal or inability to provide the information. [FI Manual p. 6-15]

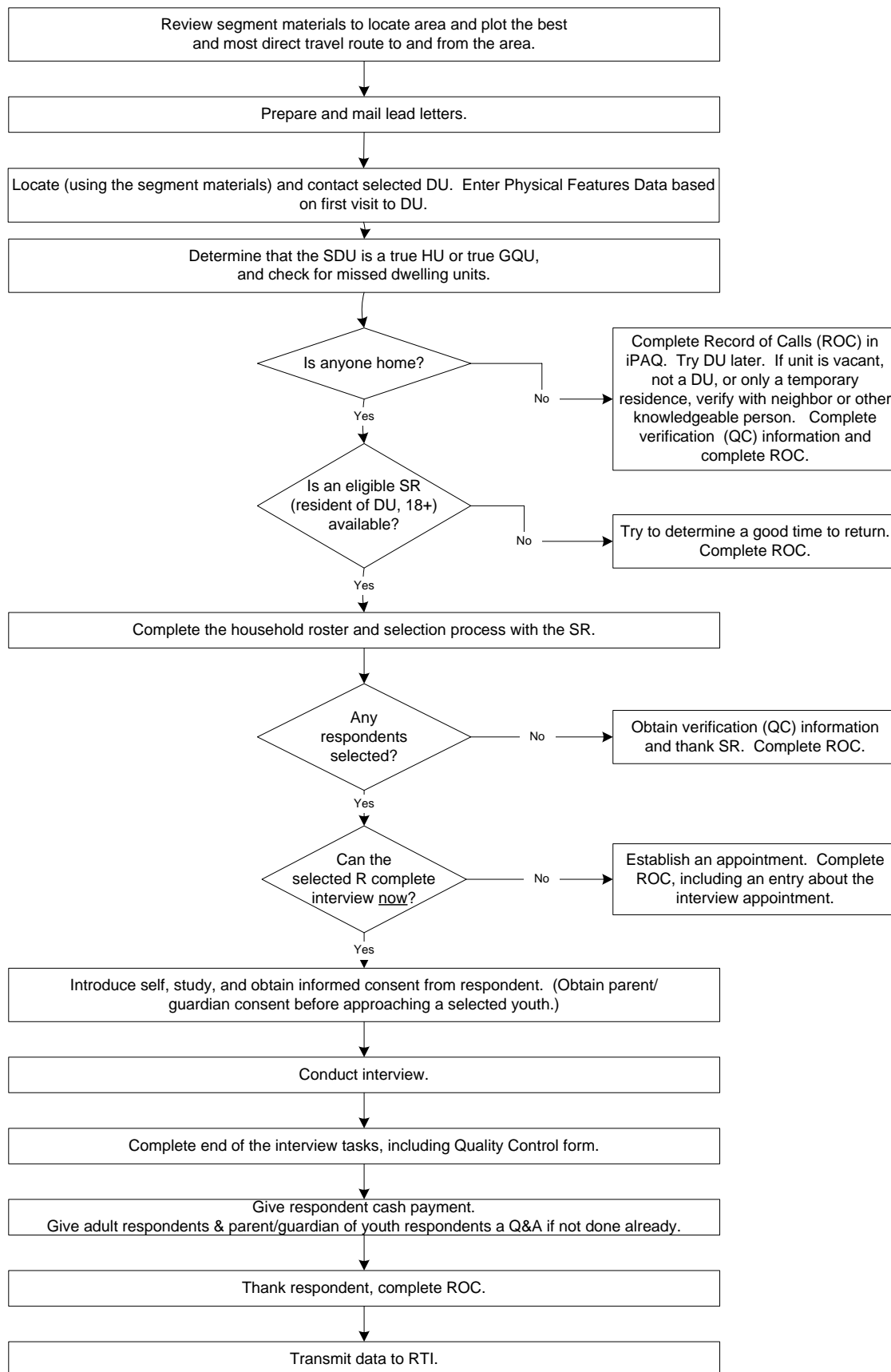
## Interview

- Read the CAI Introduction and Informed Consent from the Showcard Booklet to the R (choosing the appropriate version based on the respondent's age) before beginning the interview. Before speaking with a selected minor, you must obtain verbal parental permission. If the R was not the SR, give him/her a Study Description. [FI Manual pgs. 7-22 and 7-23]
- Make it apparent that you are completing the interview in a completely confidential and unbiased manner. [FI Manual pgs. 2-6, 2-7 and 8-1]

## Interview—continued

- To the extent possible, choose an interview location that gives the respondent privacy. [FI Manual pgs. 7-26 and 7-27]
- Do not rush the respondent. Do not tell the respondent how to make the interview go faster. [FI Manual p. 8-3]
- Use the Reference Date Calendar and read verbatim the explanation provided on the CAI screen to the R. As appropriate, remind the respondent to use the calendar as a visual aid throughout the interview. [FI Manual p. 8-14]
- Familiarize the R with the laptop and function keys by reading the provided script in the CAI Interview and allow the R to successfully complete the Computer Practice on his or her own. You must always explain, offer, AND plug in the headphones with each R. [FI Manual pgs. 8-16 and 8-17]
- Read the interview questions exactly as they appear on the screen. It is never acceptable to use your own words or ‘wing it’. Do not assume you know answers from a previous conversation, question, or interview. [FI Manual p. 8-2 and 8-3]
- Hand the appropriate Showcard to the respondent when instructed to do so on the CAI screen. [FI Manual p. 8-13]
- Allow your respondents to complete the ACASI portion of the interview on their own. Never read the questions in the ACASI portion of the interview out loud to the respondent. In cases of extreme physical impairment, it may be necessary to enter the answers into the computer for the ACASI questions, but always allow the ACASI recording to ‘read’ the questions and answer categories via the headphones. [FI Manual pgs. 8-20 through 8-22]
- Have the respondent fill out the top portion of the Quality Control Form and allow the respondent to insert the form into the envelope and seal it. Mail the form promptly. [FI Manual pgs. 8-23 through 8-25]
- Always protect the confidentiality of your respondents. Never reveal a respondent’s answers to anyone, including the respondent’s family members. Resist the temptation to reveal even positive information gleaned from an interview to parents or other household members. [FI Manual pgs. 2-6 through 2-8]

# Overview of the Screening Process



# **Screening and Interviewing Tasks**

When you work out in the field, you will encounter a variety of situations:

## **Can't screen (i.e. no one home, vacant units, SR not available, etc.)**

- choose case from Select Case, tap Actions, Screen DU
- approach unit and discover you can't screen
- with codes 10, 13 and 18, you must obtain verification information
- complete ROC to document situation.

## **Screen only (codes 22, 26, 30)**

- choose case from Select Case, tap Actions, Screen DU
- approach unit and obtain participation of eligible SR
- complete screening
- obtain verification information
- complete ROC.

## **Screen, then interview (31, 32 and then 70)**

- choose case from Select Case, tap Actions, Screen DU
- approach unit and obtain participation of eligible SR
- complete screening
- obtain Informed Consent(s)
- prepare laptop and enter QuestID from iPAQ
- complete interview(s) with available selected respondent(s)
- enter QC ID from Quality Control Form in CAI program in laptop
- complete ROC(s) in iPAQ
- mail completed Quality Control Form(s) to RTI within 24 hours.

## **Screen, make appointment for interview (codes 31, 32 and then 50)**

- choose case from Select Case, tap Actions, Screen DU
- approach unit and obtain participation of eligible SR
- complete screening
- complete ROC for screening
- complete ROC for appointment for each selected respondent
- prepare appointment card for each respondent.

## **Interview only at appointment time or other follow-up contact**

- choose case from Select Case, review selections and roster
- obtain participation/informed consent of respondent
- prepare laptop and enter QuestID from iPAQ
- complete interview(s) with respondent(s)
- enter QC ID from Quality Control Form in CAI program in laptop
- complete ROC(s) in iPAQ
- mail completed Quality Control Form to RTI within 24 hours.

Always enter Physical Features Data based on your first visit to a DU.



# The Interviewing Process

## **Informed Consent Procedures**

- **READ THE INFORMED CONSENT FOUND AT THE FRONT OF THIS BOOKLET.**
- **If the respondent is 12 - 17 years old, first obtain parental consent.**

## **Choose the best interview location, considering:**

- **Privacy and Ethics**
- **Comfort and Safety**
- **Battery power**
- **Be flexible in choosing a location, but never compromise NSDUH protocols.**

## **Setting up the Computer**

- **Unpack the computer and plug it in using the extension cord if needed.**
- **Press the ON button and WAIT for the computer to boot up.**
- **While waiting, make sure you have the QuestID displayed on the iPAQ, a Reference Date Calendar, your Showcard Booklet, a Quality Control Form and envelope, and an Interview Payment Receipt. Place clean headphone covers on the ear pieces.**
- **Enter your password at the prompt and begin your interview.**

## **Conducting the Interview**

- **Be sure that you have obtained informed consent.**
- **If respondent is under the age of 12 or is active in the military, the computer will automatically complete this case. If this occurs, remember to enter a Code 79 in the iPAQ and explain the situation.**
- **Complete the Reference Date Calendar, using the script on the computer screen.**
  - **Write the 12-month and 30-day dates given to you on the computer screen in the appropriate boxes.**
  - **Circle the 12-month reference date.**
  - **Circle the 30-day reference date. Then, underline the 30 days between the circled day and the current date.**
  - **Record the Case ID # at the top of the calendar.**
- **Use the Showcards as instructed.**
- **During ACASI, be available without being intrusive. Go ahead and prepare the Quality Control Form and envelope:**
  - **Record the date and approximate interview completion time.**
  - **Legibly write your name and FI ID #.**
  - **Fill in the Case ID #, including the A or B.**
  - **Identify parent who gave consent, if interview with youth.**
- **For a youth, the Quality Control Form should be completed preferably by a parent or guardian. (Another good reason to have a parent in the house while you conduct the interview!)**
- **Enter the QC ID and the Case ID when prompted.**
- **Complete the Interview Payment Receipt and give R the \$30 cash payment.**
- **Give adult interview respondents and parent/guardian of youth respondents a Q&A if not done earlier.**

## The Interviewing Process *(continued)*

- While R/parent completes the Quality Control Form, answer the observation questions.
- The R/parent should place the Quality Control Form into the envelope and seal it.
- If R/parent refuses to complete the Quality Control Form, ask him/her to write "REFUSED" across the top. The envelope must still be mailed to RTI.

### When finished with the Interview

- Pack up your equipment.
  - Gently close the screen display until you hear a click.
  - Unplug the power cord from the computer first and then unplug the power cord from wall. Wrap them up and place in carrying case.
  - Place the laptop in the case.
  - Zip up the carrying case.
  - Remember your iPAQ, this Showcard Booklet, Reference Date Calendar, and other papers.
- THANK YOUR RESPONDENT!
- Enter a Code 70 in your iPAQ.
- Mail the completed Quality Control Form to RTI within 24 hours of completion of the interview.

### Possible Respondent Difficulties

- Is the respondent physically or emotionally capable of participating?
  - Slow the pace of the questions to see if comprehension improves.
  - Allow adequate time to answer.
  - If respondent does not seem to understand, politely discontinue the interview and speak with your FS.
- Is the respondent intoxicated or under the influence of other drugs?
  - Attempt to schedule another time to return.
- Is the respondent blind or paralyzed?
  - Take the time to figure out if respondent can complete interview. Each interview is precious!
  - Only in these situations can you resort to entering the responses in the ACASI portions for your respondents. Make note of this deviation from protocol in the FI Observation questions.
- Does the respondent exhibit behaviors that suggest he or she may have difficulty reading?
  - Remember that the respondent can listen to all the questions on the headphones and answer most questions with a number.

# Physical Features Data Reference Sheet

There are two key elements for entering accurate Physical Features Data into the iPAQ:

1. The SDU characteristic and controlled access type should be based on **what you encounter** during your **first visit** to the SDU. Details on what transpires during subsequent contact attempts are documented in the ROCs. If the situation changes during future visits, that information will be reported in the ROCs.
2. Reference the **definitions for SDU characteristic and controlled access type**. The categories are abbreviated in the iPAQ program, so reference, as necessary, the additional information provided in parentheses below or the additional text provided in the iPAQ information screen.

Physical Features Data provides a “picture” associated with the SDU. These data are used in conjunction with ROCs to provide more complete information about issues impacting field interviewers and household surveys.

## SDU Characteristic:

Select the description of the characteristics of the SDU from the list on the SDU Characteristic screen.

**IMPORTANT NOTE: Some SDUs may fall into several characteristic categories—if so, check all characteristics that apply to the SDU.** For example, if the SDU is a high-rise apartment complex (more than 50 units) on a military base, use codes 4 and 5.

1. **House/Single Unit** (single family home, trailer, or cottage)
2. **Multi-unit, 2-9 units** (multi-unit structure with 2-9 units)
3. **Multi-unit, 10-49 units** (multi-unit structure with 10-49 units)
4. **Multi-unit, 50+ units** (multi-unit structure with 50 or more units)
5. **Military Base**
6. **Student Housing** (includes dormitory, fraternity/sorority housing, or college-owned apartment)
7. **Native American Tribal Land** (Reservation)
8. **Senior Housing/Assisted Living** (includes houses, apartments, or condos)
9. **Other GQU** (group quarters units OTHER than those listed in the above options, such as shelters)
10. **Empty Lot** (empty home site or mobile home site)

## Controlled Access Type:

"Controlled access" is defined as any situation where an FI approaches an SDU and encounters some barrier that **prevents** the FI from gaining access **to the door** of the SDU. Select the type of physical barrier(s), if any, that prevents you from gaining access to the door of the SDU during your initial visit from the list on the Controlled Access Type screen. If you encounter a controlled access barrier during your initial visit to a multi-unit building or complex that prevents you from gaining access to any SDUs, you should enter the barrier type for all SDUs in that building or complex.

**IMPORTANT NOTE: Some SDUs may include multiple types—if so, check all types that apply to the SDU.** For example, if you encounter a guard station and locked gate with no intercom when trying to approach an SDU in a community and the guard does not grant you access to the community, you would enter 2 and 3.

1. **None** (The vast majority of SDUs possess *none* of the types of access barriers listed below, so "None" will be a common entry. Remember, if you encounter any of the access barriers below, but gain access to the door of the SDU during your initial visit, the barrier would be coded as "None" per the Controlled Access definition.)
2. **Guard/Door Person/Staff/Manager** (door person at front door who has to call the unit, door person that must give access to building, guard at gate of community, on-site or off-site manager who controls access)
3. **Locked main entrance/gate, no intercom/buzzer** (locked doors, locked gate, controlled gate, or other locked entry)
4. **Locked main entrance/gate with intercom/buzzer, no unit address labels** (may contain other labels such as names, but does not provide address label)
5. **Locked main entrance/gate with intercom/buzzer, with unit address labels**

Example Scenarios	CHAR	TYPE
One story brick home in a gated neighborhood. The gate was open upon your arrival & you entered and accessed the SDU successfully.	1	1
The manager of a college dorm will not grant you access to the locked building (with no intercom/buzzer). There are 8 SDUs within the 16 unit dorm.	3 and 6	2 and 3
The SDU is in a high rise apartment building with over 100 units. There is a locked elevator and intercoms with only names listed in the lobby. You are unable to gain access to any SDUs on your first attempt.	4	4
The rural SDU on a reservation is located down a long driveway that is dangerous to traverse due to severe ice from a recent storm.	1 and 7	1
The SDU is located in a senior housing apartment building with 18 units. After being granted access to the building from a guard in the lobby, you buzz residents from an intercom with room numbers. The residents can unlock the main door from their apartment. You are granted access by the resident of the first SDU contacted.	3 and 8	1
After screening 5 SDUs in the senior housing example above, you return a week later to initially visit the remaining 7 SDUs, but the manager has told the guard not to grant you access to the building. How do you code the physical features data for the remaining cases?	3 and 8	2 and 5
You try to contact 4 SDUs in an 8 unit apartment complex on a military base, but the guard at the controlled entrance gate will not grant you access to the base on your first attempt. How do you code the physical features data for these 4 SDUs?	2 and 5	2 and 3

**If you have questions about entering Physical Features Data, contact your FS.**

## Helpful Hints for Gathering Good I&O Data

What you record in the Industry and Occupation questions is used to classify the respondent's work by assigning two separate codes. To assign these codes, the coding staff needs **descriptive, yet concise information**. For all of the industry and occupation questions, it is important to probe for further details. Use adjectives in your probes—for example, find out what type of doctor or salesperson, what kind of engineer or programmer, supervisor of what?

Also, keep in mind the following:

- **List the most important information first**, as each answer field has a character limit.
- Consider abbreviating when possible. Use typical abbreviations that coding staff will understand, such as **dr** for doctor and **mgr** for manager. **Don't use abbreviations that are not standard**—deciphering abbreviations takes a lot of time and the end result may not be what you originally intended.

The chart below lists the open-ended I&O questions, plus hints and character limits for each.

Name	Question	Character Limit	Hints
INOC01	In what kind of business or industry do you work? That is, what product is made or what kind of service is offered?	100	<ul style="list-style-type: none"> <li>• Don't enter just the name of a company as the Industry—include a description of the type of company. There could be multiple industries with the same name (e.g., Lowe's Foods or Lowe's Home Improvement Store).</li> </ul>
INOC02M	What do they make?	35	<ul style="list-style-type: none"> <li>• Probe for the <u>specific</u> product the respondent's employer makes (for example, car timing belts, small aircraft propellers).</li> <li>• One word answers are usually too general and not descriptive enough.</li> </ul>
INOC02T	What do they sell?	35	<ul style="list-style-type: none"> <li>• Probe for the <u>specific</u> product the respondent's employer sells.</li> <li>• If the respondent has difficulty specifying what is sold, it could be the response to the previous question should not have been "wholesale or retail trade." Probe for accuracy.</li> </ul>
INOC03	PLEASE SPECIFY THE TYPE OF INDUSTRY	35	<ul style="list-style-type: none"> <li>• Probe for the specific business or industry in which the respondent works. Company name and/or job title are not sufficient descriptions.</li> </ul>
INOC04	What kind of work do you do? That is, what is your occupation?	50	<ul style="list-style-type: none"> <li>• Try to use <u>detailed</u> terms that describe the Occupation (for example, "Electrical Engineer" rather than "Engineer").</li> <li>• Don't list a generic job title as the Occupation (for example, manager). Try to get a specific title for the occupation.</li> <li>• Be sure to list only one occupation.</li> </ul>
INOC05	What are your most important activities or duties in that job?	100	<ul style="list-style-type: none"> <li>• Describe the work the R spends <u>most</u> of his/her time doing for that business or occupation.</li> </ul>

The following are examples of probes and the types of details required for certain jobs in order to correctly assign the industry and occupation codes.

<u>Industry/Occupation</u>	<u>Questions to Ask</u>
<p><b>Service</b> [Businesses and occupations that work with the public]</p>	<p><b>What <u>type</u> of service?</b> <i>(housekeeping, customer service, waiter)</i></p> <p><b>What <u>type</u> of location?</b> <i>(restaurant, hotel, private home)</i></p> <p><b>For <u>whom</u> is the service done?</b> <i>(airline industry, the government, bank customers)</i></p>
<p><b>Medical Field</b></p>	<p><b>What <u>type</u> of medical field or office?</b> <i>(doctor, dentist, pediatrician, orthopedic surgeon)</i></p> <p><b>What is their <u>full</u> title?</b> <i>(Write out the word—orthodontist, orthopedist, podiatrist—do not use abbreviations such as "ortho")</i></p> <p><b>What <u>type</u> of location?</b> <i>(hospital, private doctor's office, Planned Parenthood)</i></p>
<p><b>Education</b></p>	<p><b>What <u>grade level</u> do they teach?</b> <i>(K-5, 6-9, 10-12, college)</i></p> <p><b>What <u>subject</u> do they teach?</b> <i>(English, Biology, French)</i></p> <p><b>What <u>type</u> of position?</b> <i>(Dean, Professor, Principal, Teacher, Teacher's aide, School Board member, Janitor, Cafeteria Worker)</i></p> <p><b>What <u>type</u> of location?</b> <i>(the YMCA, a recreation center, a school)</i></p>
<p><b>Childcare</b> [Babysitter, Nanny, Daycare Center, etc.]</p>	<p><b><u>Where</u> is the service given?</b> <i>(private home, someone else's home such as a neighbor, daycare center)</i></p> <p><b>What is their <u>employment status</u>?</b> <i>(self-employed, employee in a business)</i></p> <p><b>What <u>type</u> of position?</b> <i>(teacher, care provider, cleaner)</i></p>
<p><b>Supervisors/Managers</b></p>	<p><b><u>Who</u> or what <u>type</u> of activity do you supervise or manage?</b> <i>(sales clerks, laborers, accountants)</i></p> <p><b>What <u>type</u> of manager are you?</b> <i>(hotel, office, property, bakery)</i></p>
<p><b>Government Contractors</b></p>	<p><b>Is the company run by the <u>government</u> or is it a <u>private company</u>?</b> <i>(for example, RTI is a contractor for the federal government—RTI is not a government agency)</i></p>
<p><b>Call Centers</b></p>	<p><b>What <u>type</u> of call center is it?</b> <i>(retail, credit card, delinquent debt, market research, non-market research—do <b>not</b> only give the company name)</i></p> <p><b>What is the <u>primary purpose</u> of the call center?</b> <i>(repair service center, catalog ordering center, merchandising)</i></p>
<p><b>Manufacturing</b></p>	<p><b>What <u>specific product</u> do they make?</b> <i>(for example, does the company develop the software for a program or manufacture the products holding the software (e.g., discs, CD-ROMs)?)</i></p> <p><b>What <u>type</u> of machine do they operate?</b> <i>(Riveter, lathe operator, punch press operator)</i></p>

**Additional examples and information on Industry and Occupation Questions can be found in your FI Manual, pages 8-18 through 8-20.**

# Instructions for Using the Certificate of Participation

At the end of the interview, you can give a Certificate of Participation that authenticates the respondent's participation in NSDUH. Youth and other interested respondents may use the completed certificate to verify with teachers or group leaders that they participated in NSDUH, and may then receive credit for participating in the study. Possibilities include:

- extra credit for school
- incorporating the NSDUH experience into a school project
- credit towards community service hours.

It is the respondents' responsibility to arrange to receive any possible credit. Respondents and parents must understand that:

- they are responsible for making arrangements for any credit
- their school or group may or may not give credit
- no advance arrangements have been made with any school or community group in the nation.

The certificate is worded to allow for use with respondents other than middle or high school students, such as a young adult required to perform community service or for classes beyond high school.

Upon completion of the interview, prepare the certificate by:

- filling in the date the interview was completed
- and your FI name and ID number.

To preserve confidentiality, the respondent adds his or her name at a later time.

Also provide a Question and Answer Brochure along with the certificate, as it contains additional details and includes contact information and Website addresses where interested persons can obtain additional information.

# ROC Comments

ROC comments should be appropriate, non-judgmental, and:

- **Informative** -- record appointment times, best times to return, who you talked to, or if no adult was home, record which cars were in the driveway.
- **Helpful** -- note relevant information for you to use in preparing to return or when discussing the case with your supervisor. If a case gets transferred to another FI, the notes are very important to the new FI to understand what has happened.
- **Concise** -- Explain your comments directly, leaving out unnecessary words or information. Your comments must be easily understood by you, your FS, other FIs, and project managers.

Examples of good ROCs:

- CB after 7:00 pm
- 2:30 Sat appt
- W M 15ish said parents home after 8:00
- HISP F 60s send SPAN letter

## PROJECT ABBREVIATIONS

R	respondent (for the interview)
SR	screening respondent
FI	field interviewer
Q&A	Q&A Brochure
DU	dwelling unit

## STANDARD ABBREVIATIONS

days of the week	(with 3 letters)
F	female
M	male
B	black
W	white
HISP	Hispanic
SPAN	Spanish
INFO	information
REF	refused

## SUGGESTED HELPFUL ABBREVIATIONS

CB	call back (or come back)
APPT	appointment
AM	morning
AFTRN	afternoon
PM	evening
NGHBR	neighbor
GTKPR	gatekeeper
WKND	weekend



# Counting and Listing Abbreviations

<u>COLORS</u>	<u>ADDRESSES</u>	<u>OTHER/GENERAL</u>
BG Beige BK Black BL Blue BR Brown DK Dark GR Grey GN Green LT Light MED Medium OR Orange PK Pink RD Red TN Tan WH White YL Yellow	ADD Address ALY Alley APT Apartment AVE Avenue BLK Block BLVD Boulevard BLDG Building CIR Circle CT Court DRWR Drawer DR Drive HWY Highway JCT Junction LN Lane PKWY Parkway PL Place PT Point PO Post Office  RD Road RTE Route ST Street TER Terrace	ATT Attached BSMT Basement BUS Business CPT Carport CG Cattleguard CHNLNK Chainlink CHMY Chimney CHUR Church COL Column COR Corner CO County DB Doorbell DRMR Dormer DBL Double DRWY Driveway ELCMTR Electric Motor ENT Entrance EXT Exit EXTR Exterior FEN Fence FLR Floor FDN Foundation FRM Frame FR From GAR Garage GRD Guard GRV Gravel GRND Ground HSE House LG Large MBX Mailbox MID Middle MI Mile PKT Picket PCH Porch PVT Private RR Railroad RSTR Restaurant RM Room SCRNS Screen/Screened SHK Shake SHUT Shutters SD Side Door STR Store STY Storey TR Trim UC Under Construction  VAC Vacant VER Veranda VEST Vestibule WIN Window WD Wood
<u><b>DIRECTION/ORIENTATION</b></u> ABV Above ACR Across ADJ Adjacent BCK Back BEH Behind BTWN Between BTM Bottom E East FRT Front L Left N North NE Northeast NW Northwest RE Rear R Right S South SE Southeast SW Southwest W West	<u><b>STRUCTURE/MATERIALS</b></u> ALUM Aluminum BRK Brick BRNSTN Brownstone CDR Cedar CBLK Cement Block CEM Cement LOG Log RCK Rock SDG Siding STN Stone STU Stucco VNY Vinyl	
<u><b>ARCHITECTURE/BUILDING STYLE</b></u> APT Apartment CPCD Cape Cod CLNL Colonial CONDO Condominium CNTP Contemporary DBLWID Doublewide DPX Duplex RCH Ranch RF Roof SPL Split Level TRAD Traditional TRLR Trailer TRANS Transitional	<u><b>TYPES OF ROOFS</b></u> FLT Flat GBL Gable GMBR Gambrel HIP Hip MNSD Mansard SHGL Shingle SPNTL Spanish Tile TIN Tin	

# Edit Address Protocol

## When to Edit an Address

Editing SDU addresses should not be a common task. An address should only be edited if the physical address is missing or incorrect, such as when only a description of the SDU is provided.

Before editing an address, first confirm that you are at the correct selected dwelling unit. To do this, use a combination of project resources, including the handwritten List of DUs, block listing maps, and the address or description in your iPAQ. If you are confident you are at the correct DU but the address is incorrect, you should consult the *Editing Address Protocol Summary* chart. It will guide you on the steps to follow.

When you edit an address, there are two additional steps you must take to complete the process. First, you must enter a note in the Record of Calls explaining the reason for the edit. Second, you should notify your FS of the edit. Your FS must update the original segment materials with the edit, and in many cases must also notify the NSDUH Sampling Department to update the project sampling frame.

## When NOT to Edit an Address

In order to maintain the integrity of the sample, there are specific situations when you should not edit an address. These situations are listed as “Improper” in the third column of the *Editing Address Protocol Summary*.

For example, addresses must never be edited due to screening on the incorrect line or at the wrong dwelling unit. Always double-check the address at the top of the iPAQ screen and consult your segment materials to prevent this type of error.

**Never make edits to an address which create a duplicate of an address already listed on the original List of DUs without first obtaining permission from your FS and Sampling.**

Checking the original List of DUs before making an edit will ensure no duplication occurs.

Also, do not change an address or description to a Post Office Box, but instead enter any PO Box information in the Record of Calls.

Lastly, do not edit addresses to change abbreviations to full spellings, such as “Dr.” to “Drive,” or from full spellings to abbreviations, such as “Boulevard” to “Blvd.”

## Reminder:

Always refer to the Summary:

- when deciding whether or not to edit an address, and
- to be certain all appropriate procedures have been completed when editing an address.

## EDITING ADDRESS PROTOCOL SUMMARY

**REMINDER:** Always review your segment maps, original list of dwelling units, and iPAQ information before editing SDU addresses.

Scenario	Description of Situation	Proper or Improper to Edit	Appropriate FI Action	Appropriate FS Action
A	Description edited to a street address	Proper	Delete description; enter street address in iPAQ; proceed with screening; enter notes in ROCs; notify FS	Make correction in original segment kit
B	Street name spelling corrected or drive/avenue/street/etc. corrected	Proper	Edit address in iPAQ; proceed with screening; enter notes in ROCs; notify FS	Make correction in original segment kit; notify Sampling
C	Correction of one SDU address due to 911/U.S. Postal Service/ local government address revisions	Proper	Edit address in iPAQ; proceed with screening; enter notes in ROCs; notify FS	Make correction in original segment kit
D	Correction of listing error for one SDU (includes edits to street/apt. number)	Proper	Edit address in iPAQ; proceed with screening; enter notes in ROCs; notify FS	Make correction in original segment kit
E	Adding apt. numbers to differentiate between added units in a SDU or on SDU property	Proper	Edit address in iPAQ; proceed with screening; enter notes in ROCs; notify FS	Make correction in original segment kit
F	City, state, or zip code corrected	Proper	Edit address in iPAQ; proceed with screening; enter notes in ROCs; notify FS	Make correction in original segment kit; notify Sampling
G	Within controlled access buildings/complexes, edits to addresses for multiple units originally gained through "blind" listing or listing by buzzer/mailbox	Proper (with prior approval from FS)	Notify FS; if approved by FS, edit address in iPAQ; proceed with screening; enter notes in ROCs	Make correction in original segment kit; instruct FI to make edit and proceed with screening; notify Sampling
H	Complete street name change	Proper (with prior approval from FS and Sampling)	Notify FS; if approved by FS and Sampling, edit address in iPAQ; proceed with screening; enter notes in ROCs	Seek Sampling approval; if approved, make correction in original segment kit and instruct FI to make edit in iPAQ and proceed with screening
I	Removing the apt. number from SDU address	Proper (with prior approval from FS and Sampling)	Notify FS; if approved by FS and Sampling, edit address in iPAQ; proceed with screening; enter notes in ROCs	Seek Sampling approval; if approved, make correction in original segment kit and instruct FI to make edit in iPAQ and proceed with screening
J	Correction of address for multiple units due to 911/U.S. Postal Service/local government address revisions	Proper (with prior approval from FS and Sampling)	Notify FS; if approved by FS and Sampling, edit address in iPAQ; proceed with screening; enter notes in ROCs	Seek Sampling approval; if approved, make correction in original segment kit and instruct FI to make edit in iPAQ and proceed with screening
K	Correction of listing error for multiple units (includes edits to street and/or apt. number) *See Scenario G for additional information	Proper (with prior approval from FS and Sampling)	Notify FS; if approved by FS and Sampling, edit address in iPAQ; proceed with screening; enter notes in ROCs	Seek Sampling approval; if approved, make correction in original segment kit and instruct FI to make edit in iPAQ and proceed with screening
L	Adding apt. numbers to single dwelling units *See Scenario E for additional information	Proper (with prior approval from FS and Sampling)	Notify FS; if approved by FS and Sampling, edit address in iPAQ; proceed with screening; enter notes in ROCs	Seek Sampling approval; if approved, make correction in original segment kit and instruct FI to make edit in iPAQ and proceed with screening
M	Description or street address edited to a Post Office Box address	Improper	Place Post Office Box address in ROCs	Retrain FI
N	Edit due to screening on the wrong line or at the wrong dwelling unit	Improper	Request status code change or reopen code from FS; complete screening on correct line	Give status code change code or reopen code or instruct FI to final code, as appropriate; retrain FI
O	Edit due to merged or condemned unit, or unit does not exist	Improper	Notify FS; code case as instructed by FS and Sampling	Seek Sampling input; instruct FI to code case as instructed by Sampling

## Adding Missed Dwelling Units

You are not required to check the entire segment for missed dwelling units. Check for missed DUs at every selected DU. (However do not ignore significant changes, such as a new development or new apartment building—call your FS.)

At a selected housing unit, look for missed dwelling units:

- **Within the structure or on the property.**

For regular housing units (houses, townhouses, trailers, cottages, duplexes), during each screening you ask the SR if there are any other units within the structure or on the property, such as a separate apartment with a separate entrance. If so, simply enter the address of the other unit(s) and proceed with screening.

For housing units in apartment and condo buildings, do not ask the Missed DU question. However, if you discover a missed DU such as the rare but possible 'unit within a unit,' check with the SR and add the unit from the Select Case Screen by tapping "Actions/Add Missed DU."

- **In the geographic interval between the SDU and the next listed line.**

Check the space between the SDU and the next listed DU. Enter any discovered units using "Actions/Add Missed DUs."

If the SDU is the last one listed on a map page:

- the 'next listed line' means the next one listed on that map page, not the next one listed numerically. Check the interval between the SDU and the very first DU listed on that map page.
- check any subsequent zero map pages for missed DUs.

**For group quarters structures listed by persons or beds:**

- Compare the original list with the current situation. If there are more units now, call your FS who will contact RTI's Sampling Department about which missed GQUs to add.

**Limits on missed DUs:**

- Up to 5 units at one SDU
- Up to 10 units per segment
- iPAQ stores space for 5 added DUs per segment. If more are required, contact your FS to have 5 more lines transferred to your iPAQ.

## **Reconciling Missed DUs**

**Recording the addresses of missed DUs in the iPAQ does not automatically add them to your assignment. When ready to reconcile these missed DUs to see if they should be added, be sure that you have the handwritten List of Dwelling Units and the block maps.**

**You can Reconcile at three different spots in the iPAQ:**

- At the end of screening if you have entered a missed DU address(es). If you don't have time or your segment materials, simply tap "No" and reconcile later.
- If you entered a missed DU address using "Actions/Add Missed DUs," you will be asked if you want to reconcile.
- From the option "Admin/Reconcile Missed DUs."

**To Reconcile Missed DUs:**

- Follow the instructions on the iPAQ screen carefully, making certain you refer to your segment materials as you reconcile the unit.
- Determine if the missed unit is already on the handwritten List of DUs.
- Determine if the missed unit is in the correct geographic interval.
- If the missed unit is not on the list and is in the correct interval, it will be added to your assignment.
- Complete the List of Added Dwelling Units to document the unit.
- Remember to mark the location of the missed DU on the correct Block Listing Map.

**If you have any questions, exit the program and contact your FS.**

**In the following situations, check with your FS who will check with RTI's Sampling Department:**

- more than five missed DUs are found at a specific SDU
- more than 10 missed DUs are found in a segment
- a missed HU (other than a 'unit within a unit') is discovered in an apartment or condo building
- a missed GQU is discovered within a group quarters structure
- a missed group quarters structure is discovered
- a significant listing problem is discovered.

# Refusal Reasons

Use these descriptions to help you classify refusals in the iPAQ.

**1. Too busy/no time/did too many surveys already**

The number one reason for refusals is lack of time.

**2. Surveys/Govt. invasive/teen exposure**

These people feel that the government invades their privacy too much with surveys. There may be philosophical, political, or religious reasons for not participating in surveys. Parents may be concerned about exposing their teen to the sensitive subject matter in the survey.

**3. Clarify confidentiality, legitimacy, or selection**

Be sure to listen carefully to what respondents are telling you—questions about the legitimacy of the survey or how the survey guarantees confidentiality can often be explained by you on the doorstep, if you understand their concern.

**4. “Nothing in it for me”/uncooperative**

Although rare, sometimes people will either not give a reason for their refusal or they'll tell you that there's no reason for them to participate.

**5. Gatekeeper/Parent/HH member disallow**

Sometimes you encounter a refusal situation controlled by another person besides the person selected for the interview. A spouse, parent, guardian, or another influential person in the household may refuse for the selected individual, or deny you the ability to talk directly to the selected person. Even if you are able to talk with the selected person, he or she may refuse because of the other person's opinions.

**6. Welfare or INS concern**

Persons involved with various government programs may fear that you are a welfare worker or an immigration officer checking on their status.

**7. Too ill/house messy/not dressed**

These refusals are situational and will not generate a refusal letter. They refused because you caught them at an awkward time.

**8. Need to discuss with FS**

In some cases, a respondent's refusal won't fit any of the above categories, but you are able to gather a sense of what is preventing them from participating. With this option write a very specific note in the refusal comment section to alert your FS. Then you can talk with him/her about how best to handle the refusal.

## 2008 Result Codes

Pending Screening Codes		Requires FS Approval	Verification Info Required	iPAQ Auto Codes
01	No One at DU			
02	Screening Respondent Unavailable			
03	Neighbor Indicates Occupancy			
04	Physically/Mentally Incompetent			
05	Language Barrier (Spanish)			
06	Language Barrier (Other)			
07	Refusal to Screening Questions			
08	Unable to Locate SDU			
09	Other			

Final Screening Codes		Requires FS Approval	Verification Info Required	iPAQ Auto Codes
<b>Ineligible SDUs</b>				
10	Vacant		✓	
13	Not a Primary Residence		✓	
18	Not a Dwelling Unit		✓	
19	GQU Listed as HU			
20	HU Listed as GQU			
22	DU Contains Only Military Personnel		✓	✓
25	No Eligible SDU Members		✓	✓
26	In DU less than ½ of the Quarter		✓	✓
29	Listing Error	✓		
<b>Screening Not Obtained</b>				
11	No One at DU after Repeated Visits	✓		
12	SR Unavailable after Repeated Visits	✓		
14	Physically/mentally Incompetent	✓		
15	Language Barrier (Spanish)	✓		
16	Language Barrier (Other)	✓		
17	Refusal	✓		
21	Denied Access to Building/Complex	✓		
23	Other	✓		
<b>Screening Completed</b>				
30	No One Selected for Interview		✓	✓
31	One Selected for Interview			✓
32	Two Selected for Interview			✓

## 2008 Result Codes (continued)

Pending Interview Codes		Requires FS Approval	Verification Info Required	iPAQ Auto Codes
50	Appointment for Interview			
51	No One at DU			
52	Respondent Unavailable			
53	Breakoff (Partial Interview)			
54	Physically/mentally Incompetent			
55	Language Barrier (Spanish)			
56	Language Barrier (Other)			
57	Refusal (By Respondent)			
58	Parental Refusal for 12-17 Year Old			
59	Other			

Final Interview Codes		Requires FS Approval	Verification Info Required	iPAQ Auto Codes
70	Interview Complete		✓	
71	No One at Home after Repeated Visits	✓		
72	Respondent Unavailable	✓		
73	Breakoff (Partial Interview)	✓		
74	Physically/Mentally Incompetent	✓		
75	Language Barrier (Spanish)	✓		
76	Language Barrier (Other)	✓		
77	Final Refusal by Respondent	✓		
78	Parental Refusal for 12-17 Year Old	✓		
79	Other	✓		



## **SAMPLING PROCESS EXPLANATION**

**Sample:** *A representative part of a population that is studied to gain information about the whole population.*

**NSDUH target population:** *Civilian, non-institutional population aged 12 years or older residing within the 50 United States and the District of Columbia.*

### **THE PROCESS:**

RTI statisticians draw a smaller sample of the target population designed to represent the population as a whole using probability sampling.

#### **Step 1:**

Break each state up into geographic areas, called **State Sampling Regions** (SS Regions) using estimates of population and housing unit counts from the Census Bureau.

- Number of SS Regions is dependent on the population of the state.
  - 8 most populated states=48 regions.
  - Remaining states=12 regions
- Each SS Region is expected to yield the same number of interviews. This means the more densely populated the area, the smaller the region.

#### **Step 2:**

Break each SS Region up into **segments**.

- Scientifically selected to ensure the sample accurately represents the United States' population.
- Each area is assigned a "probability," or "chance," of being selected based on the Census population count.
- 8 segments selected within each SS Region.
  - 2 per quarter of data collection.

#### **Step 3:**

**Dwelling Units** within the segments are counted and listed, and recorded on the List of Dwelling Units or Group Quarters Listing Form.

#### **Step 4:**

From the listed dwelling units, specific HUs and GQUs are randomly selected.

- Selected units are called sample dwelling units, or **SDUs** which you contact for screening and possible interviewing.
- Approximately 180,000 SDUs randomly selected each year

#### **Step 5:**

Either 0, 1, or 2 persons (**respondents**) are selected for interview using the roster information entered into the iPAQ during screening. Approximately 70,000 respondents are selected and complete the interview each year.

- Eligibility for interview is based only on the AGE of the SDU members
- All screening data is used by the RTI statisticians

#### **Analysis:**

"Sample Weighting" is used to determine how many people in the population each respondent represents.

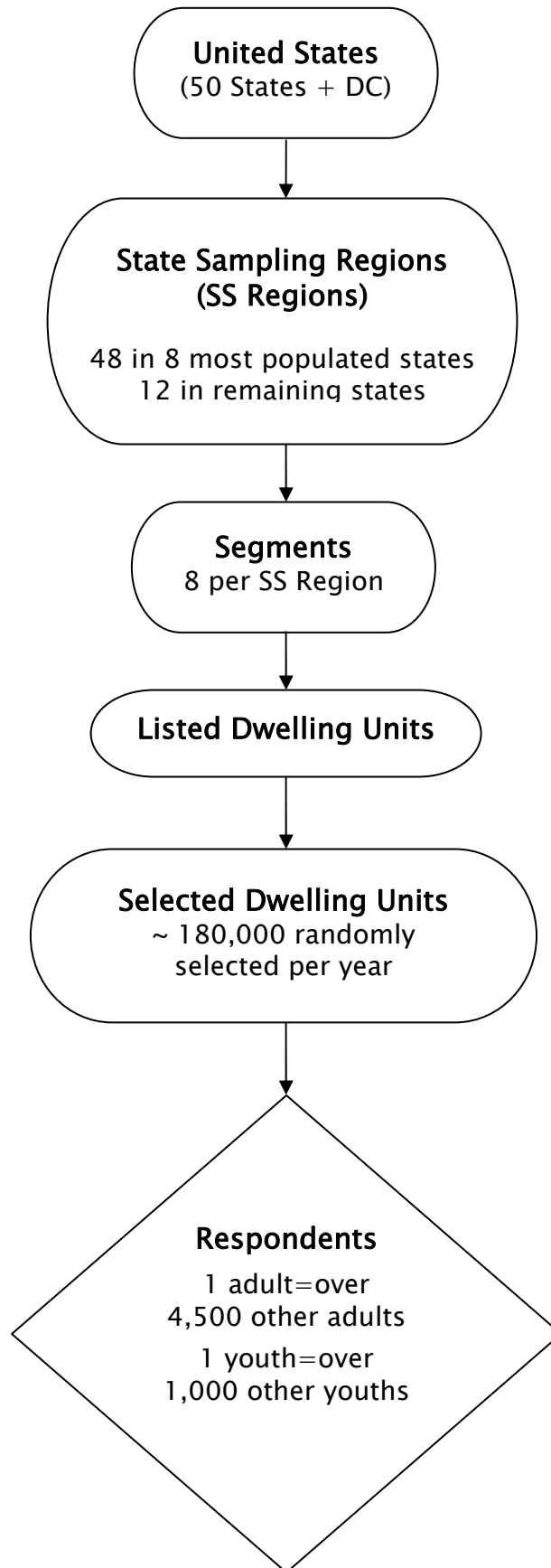
- 1 adult - represents over 4,500 other adults
- 1 youth - represents over 1,000 other youths

### **FIELD INTERVIEWER'S ROLE**

Maintain the integrity of the sample by:

- Using segment materials properly
- Following project procedures, including editing address and adding missed DU protocols
- Investigating discrepancies between the materials and what you actually see in the field
- Paying close attention to details

**SAMPLING PROCESS EXPLANATION, cont'd**



# Procedures After an Automobile Accident

## **Immediately After an Accident...**

- Check for injuries. Life and health are more important than damage to vehicles.
- Make note of specific damages to all vehicles involved.
- Write down the names, addresses and license numbers of persons involved in the accident. Also, write a description of the other vehicles.
- Call the police, even if the accident is minor.
- Jot down names and addresses of anyone who may have witnessed the accident. This can prevent disagreement concerning how the accident actually happened.

## **DOs and DON'Ts**

- **DO** jot down details about the accident and circumstances such as weather conditions and visibility.
- **DO** notify your FS, Headway, and your insurance agent about the accident immediately. If you are working as a traveling interviewer in a rental car, notify the car rental agency as well.
- **DO NOT** sign any document unless it is for the police or your insurance agent.

## **Headway Accident/Injury Reporting Procedures**

- In the event of an accident, the employee must contact his/her FS immediately. The employee must also contact a Headway Representative directly to report the accident within 24 hours of the injury. If you're calling after hours, leave a message.
- Employees are expected to seek treatment at an Emergency Room, Urgent Care Facility, or General Practitioner. If the employee seeks treatment elsewhere, the employee may be responsible for payment depending on the applicable state workers' compensation laws.
- Whenever possible, the employee will notify a Headway representative before seeking medical treatment.
- The employee will provide a signed written statement to Headway detailing the nature and extent of all injuries sustained at work.
- The employee is required to submit the results of all evaluations to a Headway representative, as well as any doctor's notes that prevent the employee from working, within 24 hours of any doctor's visit related to injury.
- Headway will investigate all on-the-job injuries thoroughly to determine causes and contributing factors. The employee will cooperate with the investigation of any accident he/she is involved in or witness to. Workers' Compensation fraud is a felony offense and Headway will prosecute anyone proven to be committing fraud.
- If physical therapy or surgery (in the event of a non-threatening injury) is recommended, pre-authorization must be obtained from the worker's compensation insurance carrier in order to guarantee payment of services. The physician should contact the Human Resources Department of Headway at ( ) for approval.

Failure to comply with these policies and procedures may jeopardize your workers' compensation benefits. Please also be reminded that workers' compensation laws vary from state to state. There may be additional requirements that you must meet in compliance with your state's laws.

# CAI Interview Edit Checklist

## DURING ACASI

- Be available to assist the respondent as needed, but be unobtrusive. Be receptive to signals that the respondent is having problems, and offer assistance.
- **Prepare the Quality Control Form:**
  - Carefully record the **Case ID** including either the **A** or **B**.
  - Make sure your **name and ID #** are printed on the form along with the **time and current date**.
  - If the respondent is a minor, indicate which **parent** (or guardian) gave permission for the interview.
- **Prepare the Interview Payment Receipt:**
  - Carefully record the **Case ID** including either the **A** or **B**.
- Update your iPAQ ROCs and your work plan for the day.
- Re-read portions of the FI Computer Manual or the FI Manual (remove a chapter or two at a time from the binder).
- Re-read the Job Aids in the Showcard Booklet.
- Review project materials looking for new tips to use when obtaining cooperation.

## END OF THE INTERVIEW TASKS

- When prompted to do so, **carefully enter the QC ID** from the Quality Control Form.
- If the respondent is a minor, ask a parent/guardian to complete the form. If a parent is not available, it is acceptable for the youth to complete it.
- **Ask the respondent/parent to complete the same Quality Control Form**, then have the respondent/parent place it in the envelope and seal it.
- Mail the envelope within 24 hours of completion of the interview.
- **Pay** the respondent and **complete the Interview Payment Receipt by signing and dating** the prepared form. Mark the appropriate box, then give the respondent the top copy.
- Check that the Case ID is recorded in the upper right corner, and mail Reference Date Calendar and Interview Payment Receipt (FS copy) to your FS weekly.
- Pack the equipment and materials including this Showcard Booklet!
- **Thank respondent!**
- Update iPAQ Record of Calls for completed interview.

# EQUIPMENT MAINTENANCE CHECKLIST

## Before Leaving Home to Screen/Interview:

- \_\_\_ Ensure iPAQ is fully charged
- \_\_\_ Put iPAQ in canvas case
- \_\_\_ Ensure you have all accessories needed [Travel Kit]
- \_\_\_ Check iPAQ date & time, and transmit to correct if necessary

## While Screening/Interviewing:

- \_\_\_ Reset from Today Screen or Admin menu every 30 minutes \*
- \_\_\_ Turn off iPAQ between screenings
- \_\_\_ Be careful not to drop iPAQ
- \_\_\_ Be extremely careful to select the correct case when screening
- \_\_\_ Keep an eye on the battery level and charge as needed
- \_\_\_ Before leaving the field, exit screener program to the Today Screen \*\*

## Upon Returning Home from Screening/Interviewing:

- \_\_\_ Exit to the Today Screen if not done earlier \*\*
- \_\_\_ Transmit
- \_\_\_ Plug in iPAQ to charge when not in use, noticing a blinking orange light to ensure you have a good connection

## When Transmitting/Charging:

- \_\_\_ ‘Squeeze the ears’ on alternate connection cable and/or adapter when connecting to iPAQ **AND** when disconnecting \*\*\*
- \_\_\_ Reset iPAQ from Today Screen or Admin Menu
- \_\_\_ Follow steps in computer manual for transmission
- \_\_\_ If problems occur, refer to computer manual

**Never** remove the battery from the iPAQ unless instructed to do so while on the phone with Tech Support. Data loss can occur!

\* Resetting enhances the function of your iPAQ by cleaning up memory leaks

\*\* Exiting screening program saves all data to the storage card—if the iPAQ battery runs down before you have exited the screening program, you will lose data

\*\*\* Connecting or disconnecting cable without ‘squeezing the ears’ damages the port

## Quick Reference Guide

In the CAI Manager, if you want to:

	<u>CLICK ON</u>
<u>S</u> tart an interview.....	<u>S</u> tart CAI
<u>C</u> ancel the start of an interview .....	<u>C</u> ancel
<u>R</u> esume (re- <u>s</u> tart) an interview.....	<u>S</u> tart CAI
<u>T</u> ransmit data to RTI .....	<u>T</u> ransmit to RTI, <u>Y</u> es
<u>V</u> iew e-mail messages .....	<u>V</u> iew Email Messages
<u>S</u> tart the e <u>P</u> TE Program.....	<u>P</u> TE Entry
List the cases by <u>D</u> escending Order (based on date) .....	<u>D</u> escending
List the cases in <u>A</u> scending Order (based on date) .....	<u>A</u> scending
<u>H</u> ide previous quarters' interviews .....	<u>H</u> ide
<u>E</u> xit CAI Manager.....	<u>E</u> xit

To begin a CAI Interview:

Enter QuestID from iPAQ for selected sample member. Double check!

In the Interview, if you need to:

<u>B</u> reak off an interview .....	[Alt] [f], [x]
<u>E</u> nter Don't Know .....	[F3]
<u>E</u> nter Refused .....	[F4]
<u>R</u> eturn to the first screen .....	[F5]
<u>R</u> eturn to the first unanswered question .....	[F6]
<u>T</u> oggle audio on/off.....	[F7]
<u>E</u> nter a comment .....	[F8]
<u>S</u> ave a comment .....	[Alt] [s]
<u>B</u> ack up one screen .....	[F9]
<u>R</u> eplay audio.....	[F10]
<u>E</u> dit a lengthy text field.....	[Ins]
<u>R</u> eturn the focus to the CAI window so the top bar is blue .....	[Alt] [Tab]

To adjust the main laptop volume\*:

<u>I</u> ncrease volume.....	[Fn], [Page Up]
<u>D</u> ecrease volume .....	[Fn], [Page Down]
<u>M</u> ute volume.....	[Fn], [Home]

\*Keep the main laptop volume turned all the way UP at all times. Respondents will only adjust the volume on the headphone cord.

To suppress a Hard Error in the interview, involving two questions:

- **Read the message box carefully.**
  - If the first question listed is the one to be changed, press [Enter].
  - If the second question listed is the one to be changed, press the down arrow key to highlight the second question, then press [Enter].
  - In the rare but possible event that neither question needs to be changed and the data entered are correct, press [Tab] until the Suppress box is highlighted and then press [Enter].

To edit a lengthy response:

- With the cursor blinking in the answer field, press the Insert key [Ins]. You can then use the arrow keys to move to the precise place within the answer field and add additional text or edit existing text.