

Please note that this presentation was given during the United Nations Climate Change Conference (COP-15) in Copenhagen, December 7-18, 2009 for more information please visit

<http://www.cop15.state.gov/> .



Transit and Sustainability: *A View from Portland*



Fred Hansen
General Manager

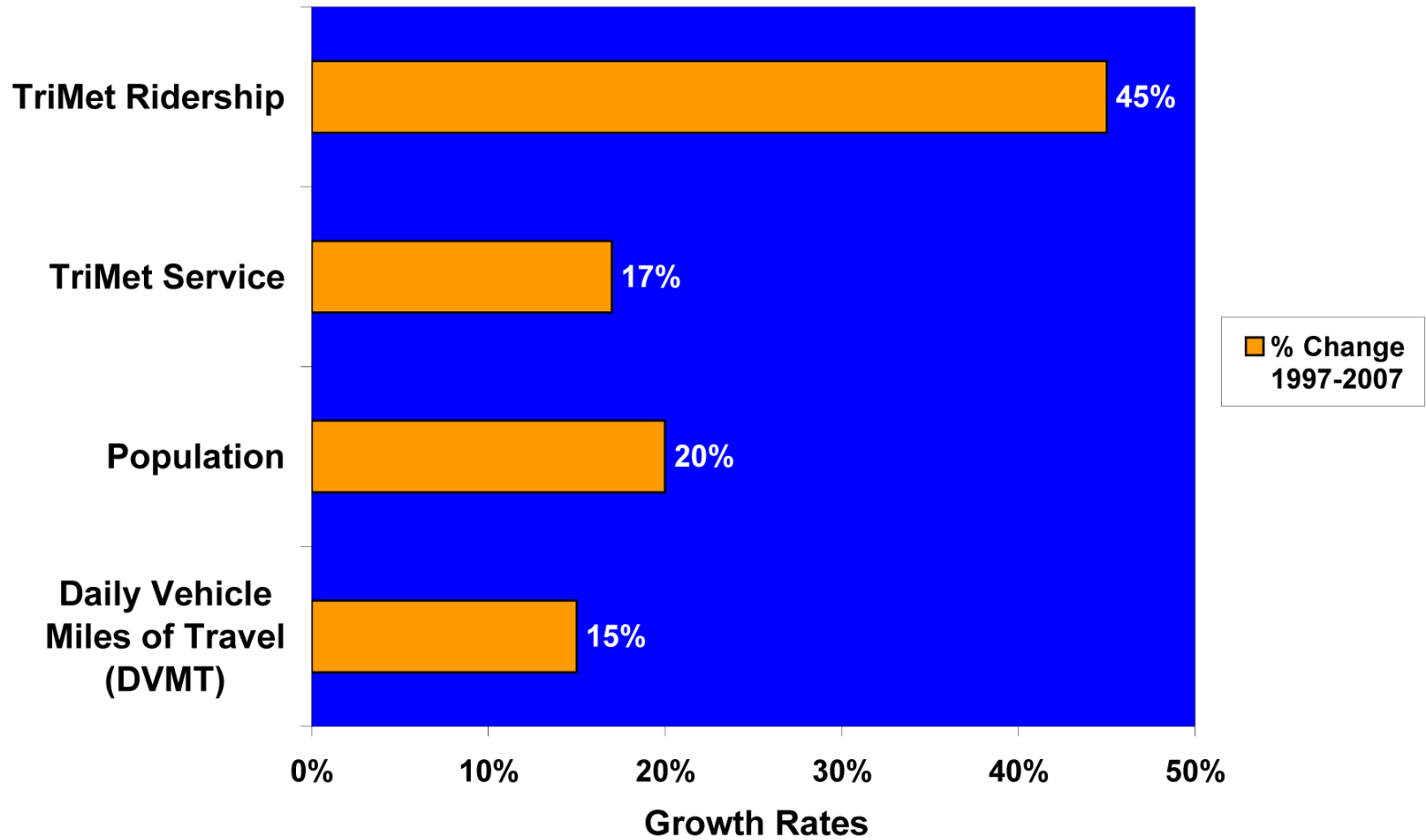
Sustainable Transportation

TriMet is an attractive alternative to driving alone

- 83% of riders are “choice” riders
- 37% of adults ride at least twice a month
- TriMet eliminates:
 - over 200,000 car trips a day
 - 300 million vehicle miles/yr

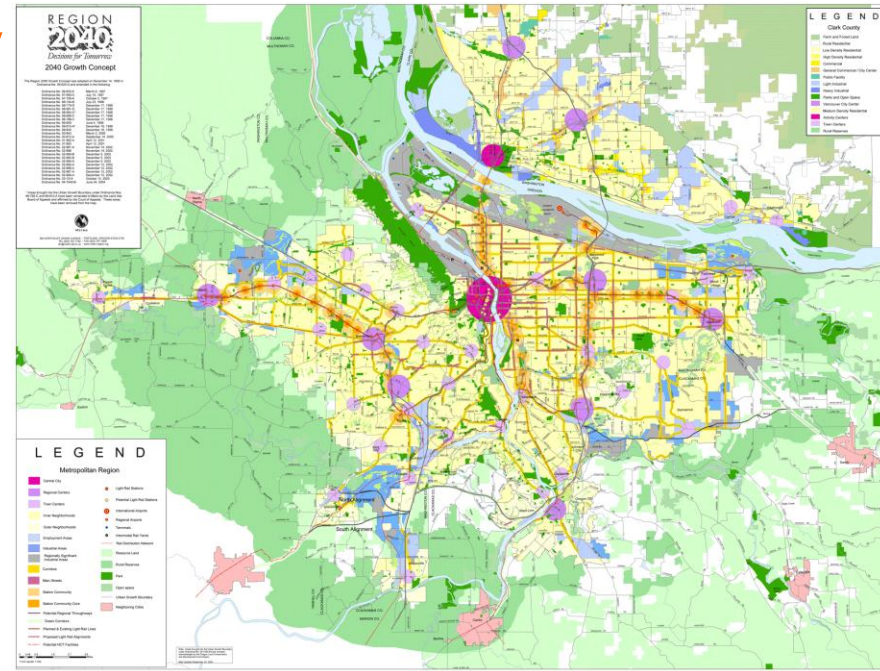


Regional Trends (1997-2007)



Portland's 2040 Growth Concept

- Urban growth boundary
- Focused on centers
- High capacity transit connections between centers
- Multi-modal and coordinated



Sustainable Transportation

Transit Oriented Development (TOD)

**\$8 billion invested within
walking distance of MAX
platforms since 1980**



TOD and “The Trip Not Taken”

- Attracting households to areas with mixed land use and good transit service reduces vehicle miles traveled (VMT).



Survey says...

Transportation Mode Share by Transit and Land Use Characteristics							
Land Use Type	Mode Share					Vehicle Miles per Capita	Auto Ownership per Household
	Percent Auto	Percent Walk	Percent Transit	Percent Bike	Percent Other		
Good Transit/Mixed Use	58.1%	27.0%	11.5%	1.9%	1.5%	9.80	0.93
Good Transit Only	74.4%	15.2%	7.9%	1.4%	1.1%	12.38	1.50
Remainder of Multnomah County	81.5%	9.7%	3.5%	1.6%	3.7%	17.34	1.74
Remainder of Region	87.3%	6.1%	1.2%	0.8%	4.6%	21.79	1.93

Source: Metro Travel Survey

Portland's "Green Dividend"

- **Smart Growth and TOD = Less Travel = More savings**
 - Portlanders travel 4 miles less each day than comparable cities
 - 2.9B fewer miles and 100M fewer hours each year

Resulting Savings:

- \$1.1B in travel costs
- \$1.5B in time costs



Sustainable Practices

- Fleet Operations
- Green Construction
- Sustainable Practices in Offices and other Properties



The APTA Sustainability Commitment

GOALS

- Define sustainability for the transit industry
 - *“Continuously reducing our environmental impact and improving our contribution to quality of life, economic growth and prosperity for all.”*
- Establish common goals and actions
- Share best practices
- Demonstrate transit’s contribution to sustainability

The APTA Sustainability Commitment

CONTINUOUS IMPROVEMENT

- Once base levels are achieved, members can commit to higher levels (e.g., bronze, silver, gold, platinum)
- Higher commitment levels include a mix of:
 - **Action items** – short to medium-term goals
 - **Reduction targets** – 2-10% reductions of carbon emissions, water usage etc.
 - **Stretch goals** – long-term process goals

The APTA Sustainability Commitment

2009 PILOT PHASE

- 43 signatories from public and private sector
 - Committed to the base principles
 - Testing and refining commitment elements



January 2010: Full Launch

Thank you!

