

Table of Contents:

Air National Guard Resource Book

Chapter 1 NGB, ANG, USAF Organizations 4

National Guard Bureau
Air Directorate
USAF– Secretariat
USAF– Air Staff
USAF – Operating Forces
Combatant Command Areas of Responsibility

Chapter 2 Total Force Structure 10

Total Force Mobility and Fighter Aircraft Inventory
Comparisons
Fighter Aircraft Inventory Comparisons
Mobility Aircraft Inventory Comparisons
ANG Installation, Unit & PAA by State & Territory
ANG Flying Units by Gaining Major Command
Numerical List of Flying Units
Base Types and Locations
ANG Range Disposition

Chapter 3 Total Force Personnel 55

Manpower and Demographics
ANG Skill Levels – Total and by Career Field
Selected Reserve Strength by State

Chapter 4 Total Force Budget 68

Air National Guard Budget

Base Realignment and Closure (BRAC): Costs and Savings
ANG Modernization Requirements
Unfunded Modernization Priority List Funding Profiles

Chapter 5 US Congress **140**

ANG Units by State or Territory, Congressional Member and District

Chapter 6 Contacts **153**

ANG Contacts by Office, Directorate, or Position

Chapter 7 Terms & Acronyms **167**

Chapter 1:

NGB, ANG, USAF Organizations

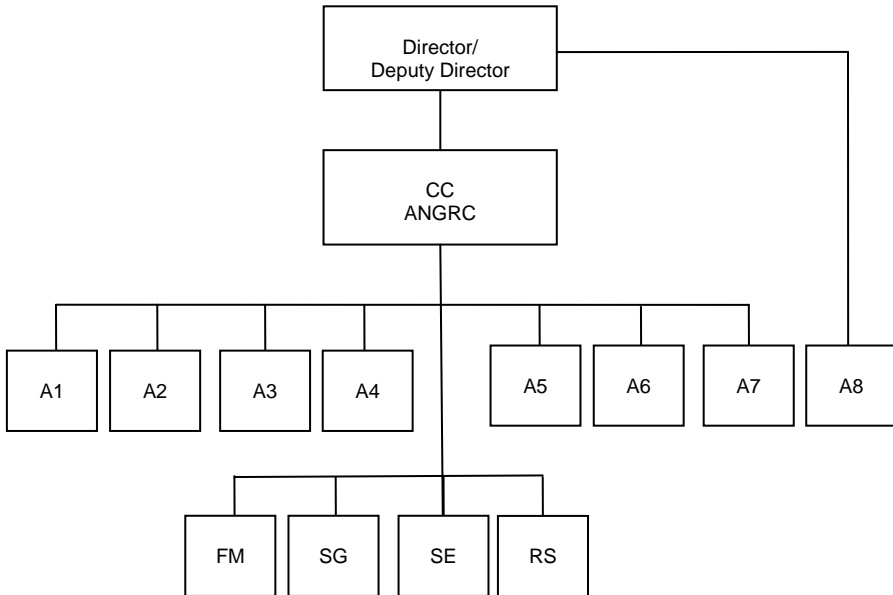
NATIONAL GUARD BUREAU

Source: NGB/CFX



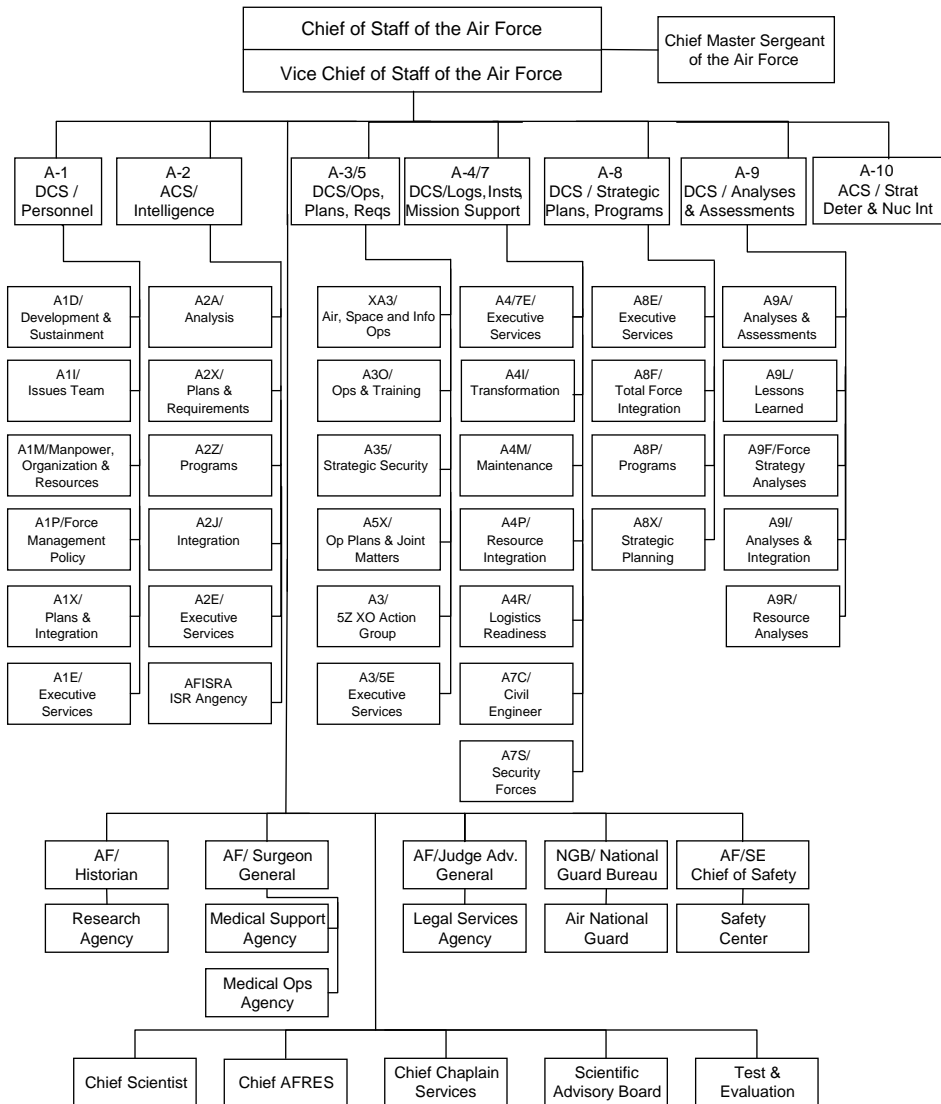
National Guard Bureau – Air Directorate

Source: NGB/CFX



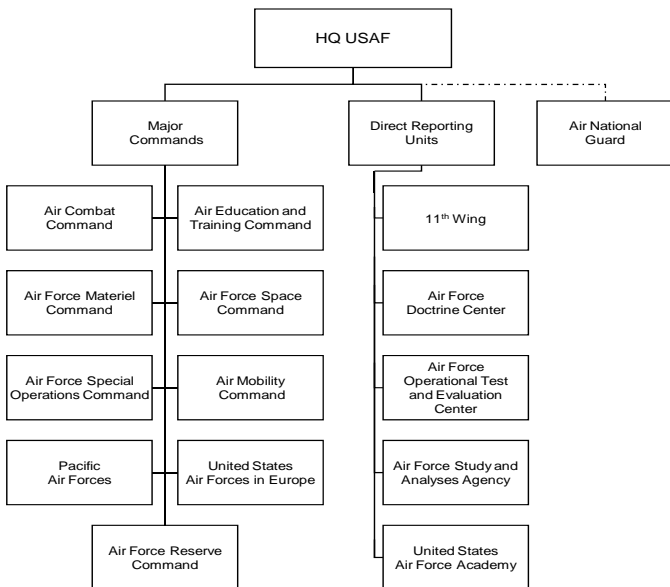
United States Air Force – Secretariat

Source: Air Force Link



United States Air Force – Operating Forces

Source: Air Force Link



Combatant Command Areas of Responsibility

Source: Defense Link

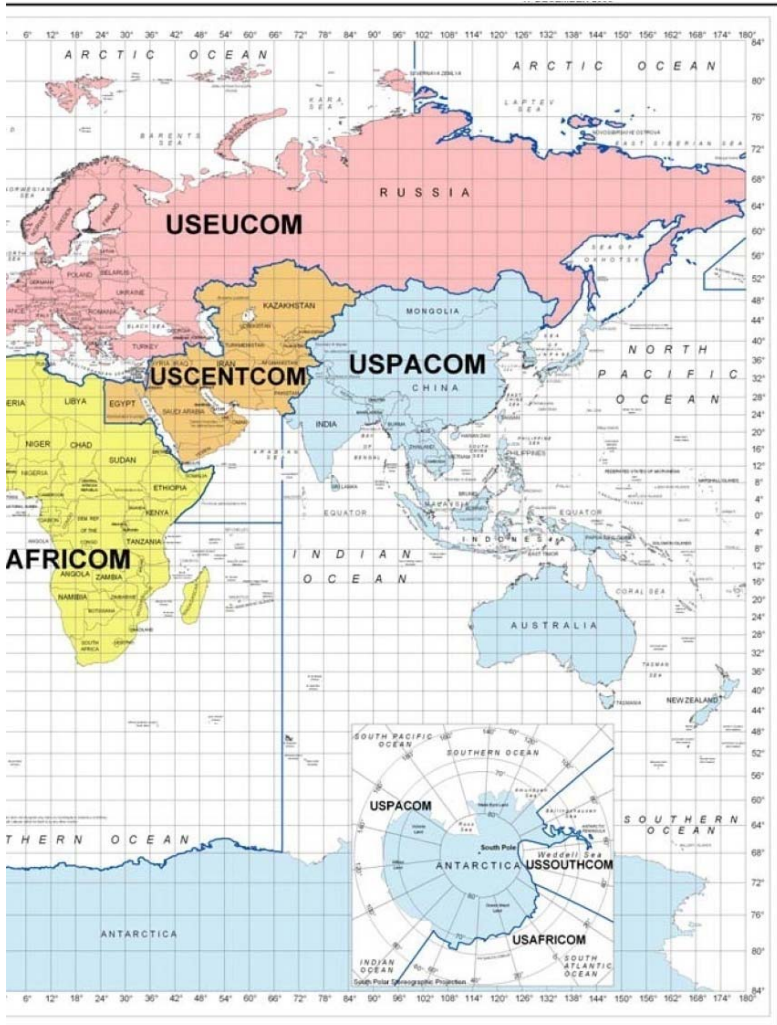
THE WORLD WITH COMMANDERS' AREAS OF RESPONSIBILITY



Combatant Command Areas of Responsibility

Source: Defense Link

THE WORLD WITH COMMANDERS' AREAS OF RESPONSIBILITY



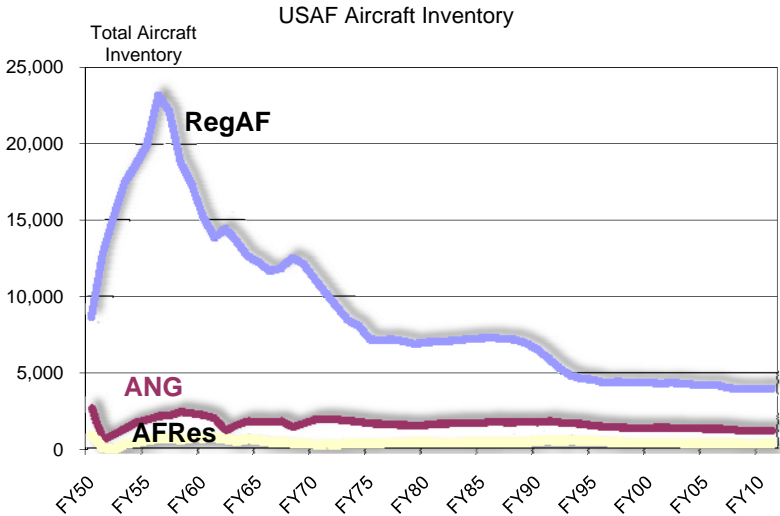
Chapter 2:

Total Force Structure

Total Force Mobility and Fighter Aircraft Inventory Comparisons

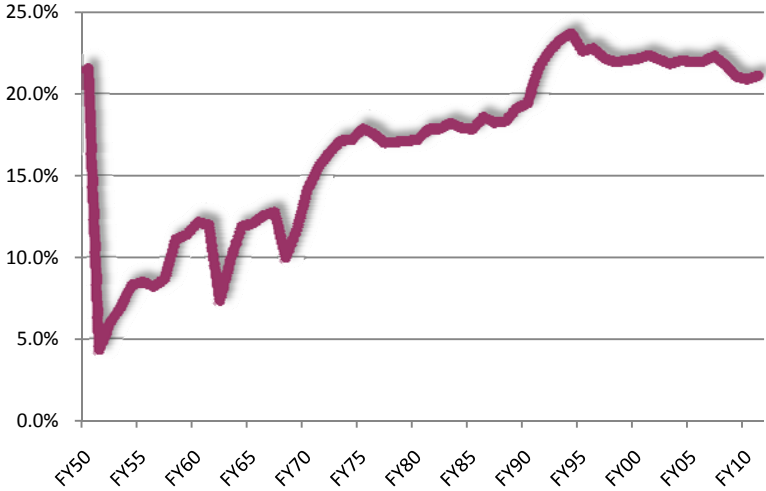
Total Force Comparison, Select Total Force Missions FY09, Q1

Source: NGB/A8Y

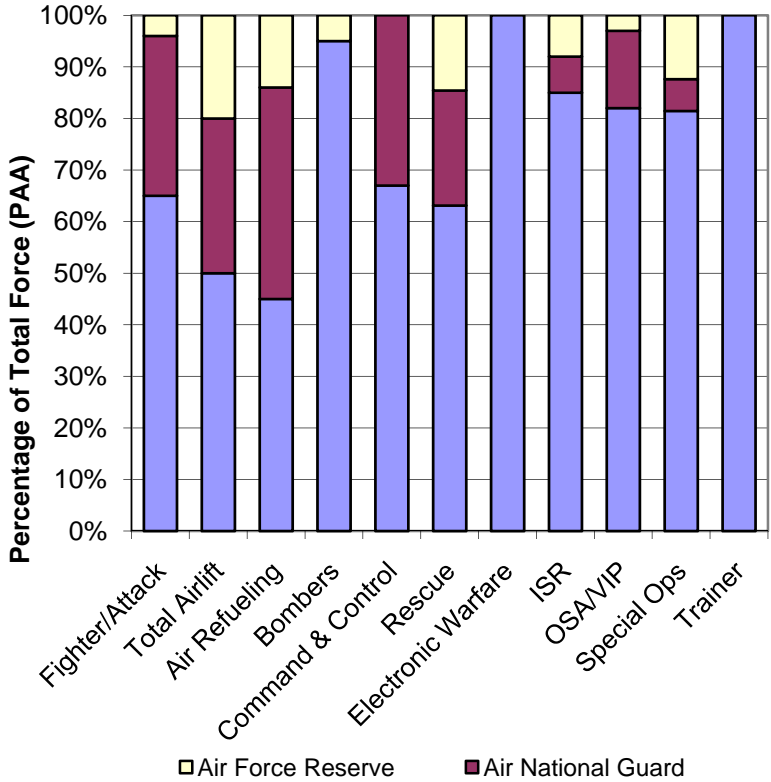


Total Force Mobility and Fighter Aircraft Inventory Comparisons

ANG Force Structure as Percentage of Total USAF



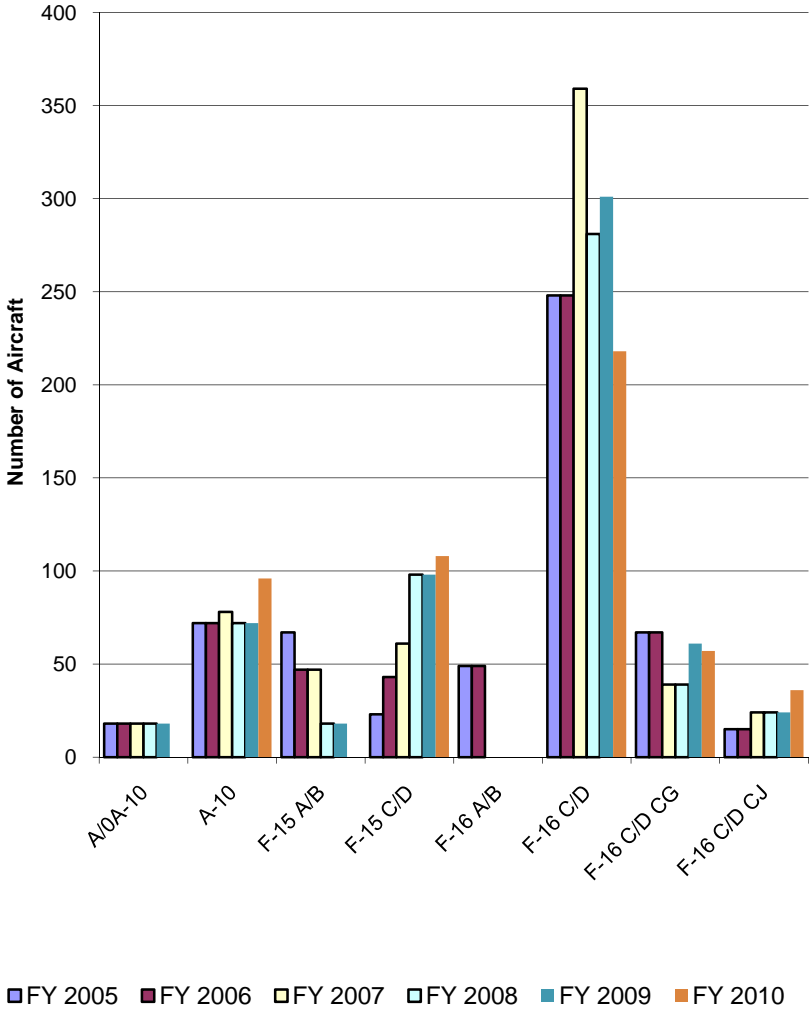
Total Force Mobility and Fighter Aircraft Inventory Comparisons



Fighter Aircraft Inventory Comparisons

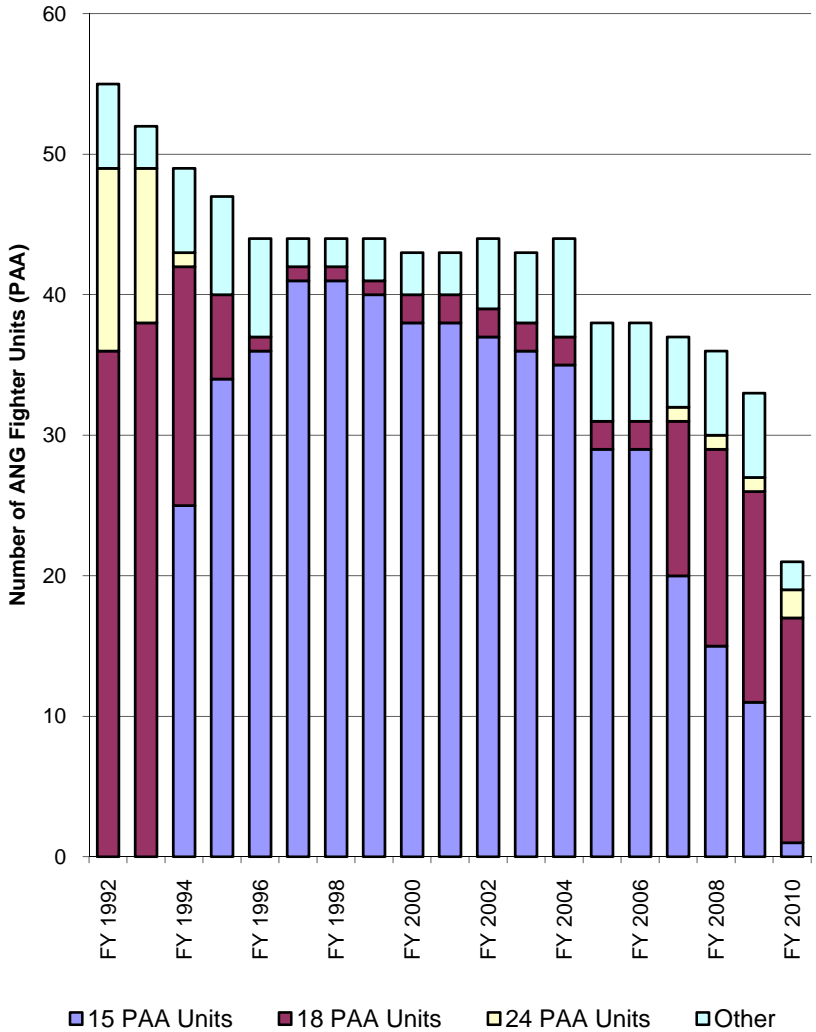
ANG Fighter Aircraft Inventory, FY05 – FY10

Source: NGB/A8Y



ANG Fighter Squadron PAA, FY92 – FY10

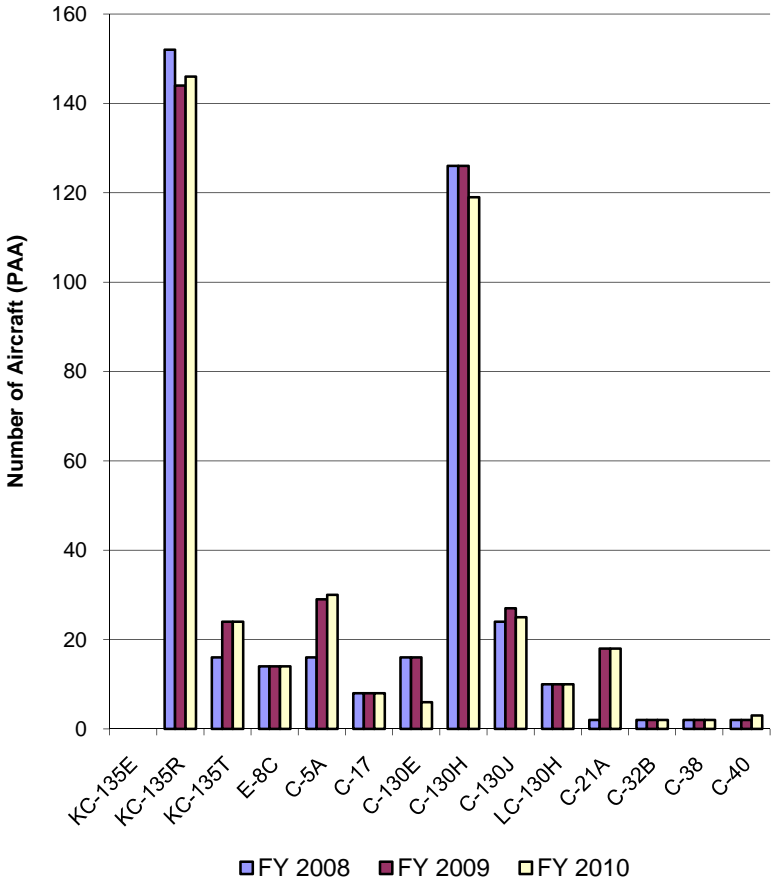
Source: NGB/A8Y



Mobility Aircraft Inventory Comparisons

ANG Mobility Aircraft Authorized Inventory FY08 – FY10

Source: NGB/A8Y



ANG Installation, Unit & PAA by State & Territory

Source: NGB/A8Y

State/ Territory	Location	Unit	Aircraft Type	PAA	Totals
AL	Montgomery, Abston AGS	226 CCG		0	0
	Birmingham Apt	117 ARW 106 ARS 117 IS	KC-135R	8	8
	Dothan, Hall AGS	280 CBCS		0	0
	Dannelly Field	187 FW 100 FS 232 CBCS	F-16C/D (Blk 30B)	18	18
AK	Anchorage, Kulis AGB	168 ARW 168 ARS 144 AS 212 RQS 210 RQS 211 RQS	C-130H HC-130N HH-60G	8 3 5	16
	Fairbanks, Eielson AFB	214 RW 214 RS 168 ARS	KC-135R	8	8
AZ	Davis-Monthan AFB	214 RW 214 RS	MQ-1B	0	0
	Papago AIN (Scottsdale)	161 ARW 197 ARS		0	0
	Phoenix Sky Harbor IAP	148 FS 152 FS 195 FS AATC 162 WF	KC-135R F-16C/D (FTU) (CB)	8 6	8 6

State/ Territory	Location	Unit	Aircraft Type	PAA	Totals
AR	Fort Smith MAP	188 FW 184 FS	F-16C (Blk 32)	15	15
	Hot Springs ANG Comm Site	223 CBCS		0	0
	Jacksonville, Little Rock AFB	189 AW 154 TRS 154 W F 123 IS	C-130E (FTU)	8	8
CA	Costa Mesa AGS	222 CBCS		0	0
	Fresno Air Terminal	144 FW 194 FS	F-16C (Blk 25)	18	18
	Hayward MAP	216 EIS 561 BAND		0	0
	Mountain View, Moffett Field NAS	129 RQW 129 RQS 130 RQS 131 RQS	MC-130P/N HH-60G	4 5	9
	Sacramento, North Highlands AGS	149 CBCS		0	0
	Ontario IAP	148 CBCS		0	0
	Oxnard, Channel Island AGS	146 AW 115 AS 195 WF 562 BAND	C-130J MAFFS*	8	8
	Riverside, March ARB	163 RW 196 RS	MQ-1B	0	0
	San Diego, Miramar NAS Van Nuys, Sepulveda AGS Vandenberg AFB	147 CBCS 261 CBCS 148 SOPS		0	0
CO	Aurora, Buckley AFB	140 WG 120 FS 240 CEF	F-16C/D (Blk 30)	18	18
	Colorado Springs, Peterson AFB	200 AS	C-21A	2	2

State/ Territory	Location	Unit	Aircraft Type	PAA	Totals
CO	Greeley AGS	137 SWS		0	0
CT	New Haven, Orange AGS	103 ACS		0	0
	Windsor Locks, Bradley IAP	103 FW 118 FS	A-10A OA-10A	6 3	9
DE	Wilmington, New Castle Co Apt	166 AW 142 AS	C-130H	8	8
DC	Camp Springs, MD JB Andrews AFB	113 WG 121 FS 201 AS 121 WF 231 CBCS	F-16C/D (Blk 30) C-38A C-40C	18 2 2	22
DE	Wilmington, New Castle Co Apt	166 AW 142 AS	C-130H	8	8
FL	Bradford, Camp Blanding AIN	202 RH SQ 159 WF		0	0
	Cocoa Beach, Patrick AFB	114 CBCS		0	0
	Jacksonville IAP	125 FW 159 FS	F-15A/C/D	15	15
	Key West, Homestead ARB	125 FW (FL ANG) Det 1		0	0
	Tampa, MacDill AFB	290 JCSS		0	0
	Tyndall AFB	148 FW (MN ANG) Det 1 SEADS 701 ADS 702 CSS		0 0 0 0	0
GA	Brunswick, Glynco AGS	224 JCSS 165 ASOS		0 0	0
	Macon, Lewis B. Wilson Apt	202 EIS		0	0
	Marietta, Dobbins ARB	530 Band		0	0
	Savannah, Hunter AGS	117 ACS		0	0
	Savannah IAP	165 AW 158 AS ANG CRTC 283 CBCS	C-130H	8	8

State/ Territory	Location	Unit	Aircraft Type	PAA	Totals
GA	Warner Robins, Robins AFB	116 ACW 12, 16 & 128 ACCS	E-8C	14	14
GU	Anderson AFB	254 ABG 254 CES 254 SFS		0	0
HI	Makakilo, Barbers Point NAS	297 ATAS		0	0
	Kekaha, Barking Sands Annex	154 ACS		0	0
	Hilo Comm Site	291 CBCS		0	0
	Honolulu, Hickam AFB	154 WG 199 FS 203 ARS 204 AS 293 CBCS 201 CCG	F-15A/B KC-135R	15 4	19
	Honolulu, Wheeler AFB Kahului Comm Station	169 AC & WS 199 WF 292 CBCS		0	0
ID	Boise Air Terminal	124 WG 190 FS 189 AS 124 ASOS 112 CACS	A-10A OA-10A C-130H	15 3 4	22
	Boise, Mountain Home AFB	266 RANS		0	0
IL	Belleville, Scott AFB	126 ARW 108 ARS	KC-135R	8	8
	Greater Peoria APT	182 AW 169 AS 169 ASOS 182 ASOC 264 CBCS 566 BAND	C-130H	8	8
	Springfield, Capital MAP	183 FW 170 FS 217 EIS	F-16C/D (TBD)	0	0

State/ Territory	Location	Unit	Aircraft Type	PAA	Totals
IN	Fort Wayne IAP	122 FW 163 FS	F-16C (Blk 25)	15	15
	Indianapolis	207 WF		0	0
	Jefferson Proving Grounds, Madison	Det 2 HQ INANG		0	0
	Terre Haute, Hulman Regional APT	181 FW 113 FS 113 WF	F-16C/D (TBD)	0	0
IA	Des Moines IAP	132 FW 124 FS	F-16C/D CG (Blk 42)	18	18
	Fort Dodge AGS	133 TS			
	Sioux City MAP	185 ARW 174 ARS	KC-135R	8	8
KS	Topeka, Forbes Field	190 ARW 117 ARS 127 WF	KC-135R	8	8
	Wichita, McConnell AFB	184 ARW 127 ARS 134 ACS 177 IAS 299 NOSS	KC-135R (TBD)	0	0
KY	Louisville IAP	123 AW 165 AS 205 CBCS 123 STF	C-130H	9	9
LA	Pineville, Camp Beauregard	122 ASOS		0	0
	Alexandria, Esler Airport	259 ATCS		0	0
	Hammond AGS	236 CBCS		0	0
	Jackson Barracks	214 EIS		0	0
	New Orleans, NAS JRB	159 FW 122 FS	F-15C/D	18	18
ME	Bangor IAP	101 ARW 132 ARS	KC-135R	8	8
	South Portland AGS	243 EIS 265 CBCS		0	0

State/ Territory	Location	Unit	Aircraft Type	PAA	Totals
MD	Baltimore, Martin State APT	175 WG 104 FS	A-10A OA-10A	15 3	18
		135 AG 135 AS	C-130J	8	8
	Camp Fretterd	104 WF			
MA	Falmouth, Otis AGB	102 FW 101 FS	F-15A/B (TBD)	0	0
		202 WF 253 CCG 267 CBCS 567 BAND			
	Milford	212 EIS			
	Westfield, Barnes MAP	104 FW 131 FS	A-10A OA-10A	12 3	15
MI	Alpena County Reg APT, ANG CRTC	ANG CRTC		0	0
	Battle Creek, W.K. Kellogg APT	110 FW 172 FS	A-10A OA-10A	12 3	15
	Mount Clemens, Selfridge AGB	127 WG 107 FS	F-16 C/D (Blk 30)	15	15
127 AG 171 AS		C-130E (TBD)	0		
MN	Duluth IAP	148 FW 179 FS	F-16C/D (Blk 25)	15	15
	Minneapolis/St. Paul IAP	133 AW 109 AS 210 EIS 208 WF	C-130H	8	8
MS	Gulfport-Biloxi Regional APT	ANG CRTC 209 CES 255 ACS		0	00
	Jackson IAP	172 AW 183 AS 172 ALC FT	C-17A	8	8

State/ Territory	Location	Unit	Aircraft Type	PAA	Totals
MS	Meridian, Key Field	186 ARW 153 ARS 238 ASOS 248 ATAS	KC-135R	8	8
MO	St. Joseph, Rosecrans Mem APT	139 AW 180 AS 241 ATAS	C-130H	8	8
	St. Louis, Jefferson Barracks AGS	157 AOG 218 EIS	0	0	0
	Lambert-St. Louis IAP	131 FW 110 FS 231 CEF 239 CBCS 571 BAND 110 WF	F-15C/D	15	15
MT	Great Falls IAP Great Falls, Malstrom AFB	120 FW 186 FS 219 RH FT	F-16C/D (TBD)	0	0
NE	Lincoln MAP	155 ARW 173 ARS	KC-135R	8	8
	Bellevue, Offutt AFB	170 GP 170 OSS 238 CTS		0	0
NV	Reno-Tahoe IAP	152 AW 192 AS 152 IS 232 OS	C-130H	8	8
NH	Portsmouth, Pease AGS	157 ARW 133 ARS 260 ATAS	KC-135R	8	8
NJ	Atlantic City IAP	177 FW 119 FS	F-16C (Blk 25)	18	18
	Wrightstown, McGuire AFB	108 ARW 141 ARS 150 ARS 227 SOF	KC-135R	8	8

State/ Territory	Location	Unit	Aircraft Type	PAA	Totals
NM	Albuquerque, Kirtland AFB	150 FW 188 FS	F-16C/D (Blk 30)	18	18
NY	Newburg, Stewart IAP	105 AW 137 AS	C-5A	12	12
	Niagara Falls IAP	107 ARW 136 ARS	KC-135R (TBD)	0	0
	Rome, Griffiss Business and Technology Park	NEADS		0	0
	Schenectady County APT	109 AW 139 AS	C-130H LC-130H	4 8	12
	Syracuse, Hancock Field	174 FW 138 FS 152 ACG 274 ASOS	F-16C (TBD)	0	0
	West Hampton Beach, Francis S. Gabreski APT	106 RQW 101 RQS 102 RQS 103 RQS	HC-130P HH-60G	4 5	9
NC	Albermarle-Stanly County Regional APT	118 ASOS		0	0
	Badin AGS	263 CBCS		0	0
	Charlotte/Douglas IAP	145 AW 156 AS 156 WF	C-130H MAFFS*	10	10
ND	Fargo, Hector Field	119 FW 178 FS	MQ-1B	0	0
OH	Blue Ash AGS	123 ACS		0	0
	Pt Clinton, Camp Perry AGS	200 RH SQ		0	0
	Mansfield Lahm APT	179 AW 164 AS	C-130H	8	8
	Rickenbacker AGS, Columbus IAP	121 ARW 145 ARS 166 ARS 164 WF	KC-135R	18	18

State/ Territory	Location	Unit	Aircraft Type	PAA	Totals
OH	Springfield-Beckly MAP	178 FW 162 FS 269 CBCS 251 CCG	F-16C/D (FTU) (Blk 30B)	12	12
	Toledo Express APT	180 FW 112 FS 555 BAND	F-16C/D CG (Blk 42)	18	18
	Zanesville	220 EIS		0	0
OK	Oklahoma City, Will Rogers World APT	137 AW 185 ARS 205 EIS	(TBD)	0	0
	Tulsa IAP	138 FW 125 FS 125 WF 219 EIS	F-16C/D CG (Blk 42)	21	21
OR	Klamath Falls IAP	173 FW 114 FS 270 ATAS	F-15A/B/C (FTU)	21	21
	Portland IAP	142 FW 123 FS 244 CBCS 272 CBCS 123 WF	F-15 A/B/C/D	15	15
	Warrenton, Camp Rilea AIN	116 ACS		0	0
PA	Lickdale, Fort Indiantown Gap AIN	271 CBCS 203 WF 211 EIS 201 RHS		0	0
	Harrisburg IAP	193 SOW 193 SOS 193 RSG 271 CBCS 553 BAND	EC-130E EC-130J	2 3	5

State/ Territory	Location	Unit	Aircraft Type	PAA	Totals
PA	Johnstown, Cambria County APT	258 ATAS		0	0
	Pittsburgh IAP	171 ARW 146 ARS 147 ARS 146 WF	KC-135T	18	18
	State College AGS	112 ACS		0	0
	Philadelphia, Willow Grove ARS	111 FW 103 FS 270 EIS	A-10A OA-10A	12 3	15
PR	Aguadilla, Punta Borinquen Radar Site	141 ACS		0	0
	Catano, Punta Salinas AGS	140 ADS			
	San Juan, Luis Munoz-Marin IAP	156 AW 198 AS 198 WF	C-130E	8	8
RI	Coventry, Coventry AGS	102 IWS		0	0
	Warwick, Quonset State APT	143 AW 143 AS	C-130J	8	8
	North Smithfield AGS	281 CCG 282 CBCS		0	0
SC	Eastover, McEntire AGS	169 FW 157 FS 240 CBCS 245 ATAS	F-16C/D (Blk 52)	24	24
SD	Sioux Falls, Joe Foss Field	114 FW 175 FS	F-16C/D (Blk30)	18	18
TN	Alcoa AGS	119 CACS		0	0
	Chattanooga, Lovell Field Ang Comm Site	241 EIS		0	0
	McGhee/Tyson Airport	134 ARW 151 ARS 572 BAND 228 CBCS ANG TEC	KC-135R	9	9

State/ Territory	Location	Unit	Aircraft Type	PAA	Totals
TN	Memphis, Memphis IAP	164 AW 155 AS	C-5A	8	8
	Nashville Metropolitan APT	118 AW 105 AS 105 WF	C-130H	8	8
TX	Beaumont, Nederland Ang Comm Site	273 EIS		0	0
	Austin, Camp Mabry Ain	209 WF		0	0
	Fort Bliss, Biggs Aux Airfield	204 SFS		0	0
	Fort Worth, Naval As, Forth Worth Jrb	136 AW 181 AS 181 WF 531 BAND	C-130H	8	8
	Garland, Garland AGS	254 CCG 221 CBCS		0	0
	Houston, Ellington Field	147 FW 111 FS		0	0
		111 WF	MQ-1B	0	0
	La Porte, La Porte AGS	272 EIS		0	0
San Antonio, Kelly Field Annex	149 FW 182 FS	F-16C/D (FTU) (Blk 30)	18	18	
UT	Ogden, Hill AFB	299 RCS			
	Salt Lake City IAP	151 ARW 191 ARS 130 EIS 109 ACS 169 IS 101 IWF	KC-135R	8	8
VT	Burlington IAP	158 FW 134 FS	F-16C (Blk 30)	18	18
VA	Virginia Beach, Camp Pendleton Ain	203 RH FT		0	00

State/ Territory	Location	Unit	Aircraft Type	PAA	Totals
VA	Hampton, Langley AFB	192 FW 149 FS 192 IS 119 FW (NDANG) Det 1	F-16C/D (ASSOC)	0	0
VI	St Croix AGS	285 CBCS		0	0
WA	Cheney, McChord AFB	262 IWAS 111 ASOC WADS Det 1 HQ WA ANG 142 FW (ORANG) Det 1		0	0
	Tacoma, Camp Murray AGS	116 ASOS 116 WF 252 CCG 241 CES 254 RHS 173 MGF 194 RSW		0	0
	Cheney, Four Lakes AGS	256 CBCS		0	0
	Everett, Paine Field Ang Comm Site	215 EIS		0	0
	Seattle Ang Comm Site	143 CBCS		0	0
	Spokane IAP	242 CBCS		0	0
	Spokane, Fairchild AFB	141 ARW 116 ARS 560 BAND	KC-135R (ASSOC)	0	0
	WV	Charleston, Yeager APT	130 AW 130 AS	C-130H	8
Martinsburg, Ewv Regional APT/Shepherd Field		167 AW 167 AS	C-5A	10	10
WI	Madison, Truax Field	115 FW 176 FS	F-16C/D (Blk 30B)	18	18

State/ Territory	Location	Unit	Aircraft Type	PAA	Totals
WI	Milwaukee, Gen. Mitchell IAP	128 ARW 126 ARS 126 WF	KC-135R	9	9
	New Lisbon, Volk Field	ANG CRTS 128 ACS		0	0
WY	Cheyenne Municipal APT	153 AW 187 AS 242 ATAS	C-130H MAFFS*	12	12
	Cheyenne, F.E. Warren AFB	153 CACS		0	0

ANG Flying Units by Gaining Major Command

Source: NGB/A8Y Facts

Air Combat Command (ACC)	
<i>Unit</i>	<i>Location</i>
A-10A Fighter/OA-10 Observation Aircraft	
110th Fighter Wing	W. K. Kellogg APT, Michigan
111th Fighter Wing	Willow Grove NAS, Pennsylvania
124th Wing	Boise Air Term, Idaho
175th Wing	Martin State APT, Maryland
C-130E Transport	
156th Airlift Wing	Luis Munoz Marin IAP, Puerto Rico
E-8 Joint STARS	
116th Air Control Wing	Robins AFB, Georgia
F-16 CJ Fighter	
122nd Fighter Wing	Ft Wayne IAP, Indiana
158th Fighter Wing	Burlington IAP, Vermont
174th Fighter Wing	Hancock Fld, New York
177th Fighter Wing	Atlantic City IAP, New Jersey
188th Fighter Wing	Ft Smith MPT, Illinois
F-16 CG Fighter	
132nd Fighter Wing	Des Moines IAP, Iowa
138th Fighter Wing	Tulsa IAP, Oklahoma
180th Fighter Wing	Toledo Express APT, Ohio
F-16 C/D Fighter	
113th Wing	JB Andrews, Maryland

Air Combat Command (ACC)	
<i>Unit</i>	<i>Location</i>
F-16 C/D Fighter	
114th Fighter Wing	Joe Foss Fld, South Dakota
115th Fighter Wing	Truax Fld, Wisconsin
120th Fighter Wing	Great Falls IAP, Montana
127th Wing	Selfridge AGB, Michigan
140th Wing	Buckley AFB, Colorado
148th Fighter Wing	Duluth IAP, Minnesota
150th Fighter Wing	Kirtland AFB, New Mexico
169th Fighter Wing	McEntire AGS, South Carolina
187th Fighter Wing	Dannelly Fld, Alabama
F-22 A/B Fighter Air Sovereignty	
192d Fighter Wing	Langley AFB, Virginia
F-15 A/B Fighter Air Sovereignty	
104th Fighter Wing	Barnes MPT, Massachusetts
125th Fighter Wing	JacksonvilleIAP, Florida
142d Fighter Wing	Portland IAP, Oregon
F-16 C/D Fighter Air Sovereignty	
144th Fighter Wing	Fresno Air Term, California
HC-130P/HH-60G Rescue Aircraft	
106th Rescue Wing	F. S. Gabreski APT, New York
MC-130P/HH-60G Rescue Aircraft	
129th Rescue Wing	Moffett Fld NAS, California
C-21A Transport	
103th AW	Buckley AFB, Colorado
C-38A Transport	
113th Wing	JB Andrews, Maryland
Predator Units	
119th Wing	Hector Field, North Dakota
147th Reconnaissance Wing	Ellington Fld, Texas
163d Reconnaissance Wing	March ARB, California
214th Reconnaissance Group	Davis-Monthan AFB, Arizona

Air Mobility Command (AMC)	
C-5A Transport	
105th Airlift Wing	Stewart IAP, New York
164th Airlift Wing	Memphis IAP, Tennessee
Air Mobility Command (AMC)	
<i>Unit</i>	<i>Location</i>
LC-130 Transport	
109th Airlift Wing	Schenectady Co APT, New York
C-17A Transport	
172nd Airlift Wing	Jackson IAP, Mississippi
C-130H Transport	
107th Airlift Wing	Niagara Falls IAP, New York
109th Airlift Wing	Schenectady Co APT, New York
118th Airlift Wing	Nashville Metro APT, Tennessee
123rd Airlift Wing	Louisville IAP, Kentucky
130th Airlift Wing	Yeager APT, West Virginia
133rd Airlift Wing	Minn St. Paul IAP, Minnesota
136th Airlift Wing	Dallas NAS, Texas
139th Airlift Wing	Rosecrans Mem APT, Missouri
145th Airlift Wing	Charlotte-Douglas IAP, North Carolina
152nd Airlift Wing	Reno Tahoe IAP, Nevada
153rd Airlift Wing	Cheyenne MPT, Wyoming
165th Airlift Wing	Savannah IAP, Georgia
166th Airlift Wing	New Castle Co APT, Delaware
167th Airlift Wing	EWVR APT/Shepherd, West Virginia
179th Airlift Wing	Mansfield-Lahm APT, Ohio
182nd Airlift Wing	Gtr Peoria APT, Illinois
C-130J Transport	
135th Airlift Group	Martin State APT, Maryland
143rd Airlift Wing	Quonset State APT, Rhode Island
146th Airlift Wing	Channel Island AGS, California

Air Mobility Command (AMC)	
KC-135E Tanker	
101st Air Refueling Wing	Bangor IAP, Maine
108th Air Refueling Wing	McGuire AFB, New Jersey
126th Air Refueling Wing	Scott AFB, Illinois
134th Air Refueling Wing	McGhee/Tyson APT, Tennessee
151st Air Refueling Wing	Salt Lake City IAP, Utah
171st Air Refueling Wing	Pittsburgh IAP, Pennsylvania
185th Air Refueling Wing	Sioux Gateway APT, Iowa
190th Air Refueling Wing	Forbes Fld, Kansas
KC-135R Tanker	
117th Air Refueling Wing	Birmingham APT, Alabama
121st Air Refueling Wing	Rickenbacker AGB, Ohio
128th Air Refueling Wing	Gen. Mitchell IAP, Wisconsin
137th Air Refueling Wing	Will Rogers Wld APT Oklahoma
141st Air Refueling Wing	Fairchild AFB, Washington
155th Air Refueling Wing	Lincoln MPT, Nebraska
157th Air Refueling Wing	Pease AGS, New Hampshire
161st Air Refueling Wing	Phoenix-Sky Harbor IAP, Arizona
186th Air Refueling Wing	Key Fld, Mississippi
Air Education and Training Command (AETC)	
F-15 A/B Fighter	
173d Fighter Wing	Klamath Falls IAP (FTU), Oregon
F-16 C/D Fighter	
149th Fighter Wing	Kelly Field Annex (FTU), Texas
162nd Fighter Wing	Tucson IAP (FTU), Arizona
178th Fighter Wing	Springfield-Beckley MPT (FTU), Ohio
C-130E Training	
189th Airlift Wing	Little Rock AFB (FTU), Arkansas
MQ-1 Predator	
Det 26, 372 TRS, 982 TRG,	March ARB (FTD, California)

Pacific Air Command (PACAF)	
C-130H Transport	
176th Wing (144 AS)	Kulis AGB, Alaska
F-15 A/B Fighter	
154th Wing (199 FS)	Hickam AFB, Hawaii
KC-135R Tanker	
154th Wing (203 ARS)	Hickam AFB, Hawaii
168th Air Refueling Wing	Eielson AFB, Alaska
HC-130N/HH-60G	
176th Wing (210 RQS)	Kulis AGB, Alaska
Air Force Special Operations Command (AFSOC)	
EC-130E/J	
193rd Special Operations Wing	Harrisburg IAP, Pennsylvania

Numerical List of Flying Units

Source: NGB/A8Y

UNIT	LOCATION	ST	SQD / MDS	MAJCOM
101 ARW	Bangor IAP	ME	132 ARS / KC-135R	AMC
102 FW	Otis AGB	MA	101 FS / (TBD)	ACC
103 FW	Bradley IAP	CT	118 FS / C-21	ACC
104 FW	Barnes MPT	MA	131 FS / F-15 O/D	ACC
105 AW	Stewart IAP	NY	137 AS / C-5A	AMC
106 RQW	F. S. Gabreski APT	NY	101, 102, 103 RQS HC-130P/HH-60G	ACC
107 ARW	Niagara Falls IAP	NY	136 ARS / KC-135R	AMC
108 ARW	McGuire AFB	NJ	141 ARS, 150 ARS / KC- 135R	AMC
109 AW	Schenectady Co APT	NY	139 AS / C-130H/LC-130H	AMC
110 FW	W. K. Kellogg APT	MI	172 FS / A-10A/OA-10A	ACC
111 FW	Willow Grove NAS	PA	103 FS / A-10A/OA-10A	ACC
113 WG	JB Andrews	MD	121 FS, 201 AS F-16C/D / C-38A/C-40C	ACC
114 FW	Joe Foss FLD	SD	175 FS / F-16C/D	ACC
115 FW	Truax FLD	WI	176 FS / F-16C/D	ACC
116 ACW	Robins AFB	GA	128 ACC / E-8C	ACC
117 ARW	Birmingham APT	AL	106 ARS / KC-135R	AMC

UNIT	LOCATION	ST	SQD / MDS	MAJCOM
118 AW	Nashville Metro APT	TN	105 AS / C-130H	AMC
119 WG	Hector IAP	ND	178 RS/MQ-1B (+C-21)	ACC/AMC
120 FW	Great Falls IAP	MT	186 FS / (TBD)	ACC
121 ARW	Rickenbacker AGS	OH	145 ARS, 166 ARS / KC-135R	AMC
122 FW	Ft Wayne IAP	IN	163 FS / F-16C/D	ACC
123 AW	Louisville IAP	KY	165 AS / C-130H	AMC
124 WG	Boise Air Term	ID	189 AS, 190 FS C-130H / A-10A/OA-10A	AMC
125 FW	Jacksonville IAP	FL	159 FS / F-15A/C/D	ACC
126 ARW	Scott AFB	IL	108 ARS / KC-135R	AMC
127 WG	Selfridge AGB	MI	107 FS, 171 AS F-16C/D / (TBD)	ACC
128 ARW	Gen. Mitchell IAP	WI	126 ARS / KC-135R	AMC
129 RQW	Moffett FLD NAS	CA	129, 130, 131 RQS MC-130P/HH-60G	ACC
130 AW	Yeager APT	WV	130 AS / C-130H	AMC
131 FW	Lambert St Louis IAP	MO	110 FS / F-15C/D	ACC
132 FW	Des Moines IAP	IA	124 FS / F-16C/D	ACC
133 AW	Minn St Paul IAP	MN	109 AS / C-130H	AMC
134 ARW	McGhee/Tyson APT	TN	151 ARS / KC-135R	AMC
135 AG	Martin State APT	DC	135 AS, 104 FS C-130J / A-10A/OA-10A	AMC

UNIT	LOCATION	ST	SQD / MDS	MAJCOM
136 AW	Naval AS Forth Worth	TX	181 AS / C-130H	AMC
137 ARW	Will Rogers Wld APT	OK	185 ARS / KC-135	AMC
138 FW	Tulsa IAP	OK	125 FS / F-16C/D	ACC
139 AW	Rosecrans Mem APT	MO	180 AS / C-130H	AMC
140 WG	Buckley AFB	CO	120 FS / F-16C/D	ACC
140 WG	Peterson AFB	CO	200 AS / C-21A	ACC
141 ARW	Fairchild AFB	WA	116 ARS / KC-135R (ASSOC)	AMC
142 FW	Portland IAP	OR	123 FS / F-15A/B/C/D	ACC
143 AW	Quonset St APT	RI	143 AS / C-130J	AMC
144 FW	Fresno Air Term	CA	194 FS / F-16C	ACC
145 AW	Charlotte-Douglas IAP	NC	156 AS / C-130H	AMC
146 AW	Channel Island AGS	CA	115 AS / C-130J	AMC
147 RW	Ellington FLD	TX	111 RS /MQ-1B	ACC
148 FW	Duluth IAP	MN	179 FS / F-16C	ACC
149 FW	Kelly Field Annex	TX	182 FS / F-16C/D	AETC
150 FW	Kirtland AFB	NM	188 FS / F-16C/D	ACC
151 ARW	Salt Lake City IAP	UT	191 ARS / KC-135R	AMC
152 AW	Reno Tahoe IAP	NV	192 AS / C-130H	AMC
153 AW	Cheyenne MPT	WY	187 AS / C-130H	AMC

UNIT	LOCATION	ST	SQD / MDS	MAJCOM
154 WG	Hickam AFB	HI	199 FS, 203 ARS, 204 AS F-15A/B / KC-135R C-17 AS	PACAF
155 ARW	Lincoln MPT	NE	173 ARS / KC-135R	AMC
156 AW	Luis Munoz Marin IAP	PR	198 AS / C-130E	ACC
157 ARW	Pease AGS	NH	133 ARS / KC-135R	AMC
158 FW	Burlington IAP	VT	134 FS / F-16C	ACC
159 FW	NAS JRB New Orleans	LA	122 FS / F-15C/D	ACC
161 ARW	Phoenix-Sky Harbor IAP	AZ	197 ARS / KC-135R	AMC
162 FW	Tuscon IAP (FTU)	AZ	148,152, 195 FS, AATC F-16A/B / F-16C/D	AETC
163 RW	March AFB	CA	196 RS /MQ-1B	ACC
164 AW	Memphis IAP	TN	155 AS / C-5A	AMC
165 AW	Savannah IAP	GA	158 AS / C-130H	AMC
166 AW	New Castle Co APT	DE	142 AS / C-130H	AMC
167 AW	EWVR Apt/Shepherd	WV	167 AS / C-5A	AMC
168 ARW	Eielson AFB	AK	168 ARS / KC-135R	AMC
169 FW	McEntire AGS	SC	157 FS / F-16C/D	ACC
171 ARW	Pittsburgh IAP	PA	146 ARS, 147 ARS / KC- 135T	AMC
172 AW	Jackson IAP	MS	183 AS / C-17	AMC
173 FW	Klamath Falls IAP	OR	114 FS / F-15A/B/C	AETC
174 FW	Hancock FLD	NY	138 FS / (TBD)	ACC

UNIT	LOCATION	ST	SQD / MDS	MAJCOM
176 WG	Kulis AGB	AK	144 AS, 210,211,212 RQS C-130H / HC-130N/HH-60G	PACAF
177 FW	Atlantic City IAP	NJ	119 FS / F-16C	ACC
178 FW	Springfield-Beckley MPT	OH	162 FS / F-16C/D	AETC
179 AW	Mansfield-Lahm APT	OH	164 AS / C-130H	AMC
180 FW	Toledo Express APT	OH	112 FS / F-16C/D	ACC
181 FW	Hulman Regional APT	IN	113 FS / TBD	ACC
182 AW	Gtr Peoria APT	IL	169 AS / C-130H	AMC
183 FW	Capital MPT	IL	170 FS / F-16C/D	ACC
184 ARW	McConnell AFB	KS	127 ARS / TBD	AMC
185 ARW	Sioux Gateway APT	IA	174 ARS / KC-135R	AMC
186 ARW	Key FLD	MS	153 ARS / KC-135R	AMC
187 FW	Dannelly FLD	AL	100 FS / F-16C/D	ACC
188 FW	Ft Smith MPT	AR	184 FS / F-16C	ACC
189 AW	Little Rock AFB (FTU)	AR	154 AS / C-13H	AETC
190 ARW	Forbes FLD	KS	117 ARS / KC-135R	AMC
192 FW	Langley AFB	VA	149 FS / F-22C/D (ASSOC)	ACC
193 SOW	Harrisburg IAP	PA	193 SOS / EC-130J	AFSOC

Base Types and Locations

All USAF Active Duty, AFR, ANG Bases & Facilities that have ANG Presence

Source: ANG/CEPD

Installations by State		ANG Flying (F) or Support (S) or Neither (N)	Range	Civilian Airport	NASA Facility	Army Post	USAF Base	Naval Air Stations	ANG Base	AFRC Base	GUS	AFR Support	Other
State	Installation												
AL	Abston	S									✓		
	Birmingham	F		✓									
	Montgomery Regional	F		✓									
	Dothan	S									✓		
	Martin	X									✓		
	Maxwell	N					✓						
AK	Eielson	F					✓						
	Elmendorf	S					✓						
	Ted Stevens-Anchorage	F		✓									
AZ	Davis-Monthan	S					✓						
	Fort Huachuca	S				✓							
	Luke	N					✓						
	Papago - Phoenix	S									✓		
	Phoenix Sky Harbor	F		✓									
	Tucson	F		✓									
AR	Fort Chaffee	S	✓										
	Hot Springs	S									✓		
	Little Rock	F					✓						
	Fort Smith	F		✓									
CA	Beale	N					✓						
	Channel Island	F						✓					
	Costa mesa	S									✓		
	Edwards	N					✓						
	Fresno Air Terminal	F		✓									
	Hayward MAP	S									✓		

Installations by State		ANG Flying (F) or Support (S) or Neither (N)	Range	Civilian Airport	NASA Facility	Army Post	USAF Base	Naval Air Stations	ANG Base	AFRC Base	GSU	AFR Support	Other
State	Installation												
CA	Los Angeles	N					✓						
	March ARB	F								✓			
	Moffet Federal Field	F			✓								
	North Highlands	S									✓		
	San Diego	S									✓		
	Sepulveda	S									✓		
	Travis	N					✓						
	Vandenburg	N					✓						
CO	Buckley	F					✓						
	Fort Carson	S	✓			✓							
	Greeley	S									✓		
	Peterson	F					✓						
	Schriever	N					✓						
	USAF Academy	N					✓						
CT	Bradley	F		✓									
	Orange	S									✓		
DE	New Castle County	F		✓									
	Dover	N					✓						
DC	Bolling	N					✓						
FL	Camp Blanding	S									✓		
	Eglin	N					✓						
	Homestead	F								✓			
	Hurlburt	N					✓						
	Jacksonville	F		✓									
	MacDill	S					✓						
	Patrick	S					✓						
	Tyndall	N					✓						

Installations by State		ANG Flying (F) or Support (S) or Neither (N)	Range	Civilian Airport	NASA Facility	Army Post	USAF Base	Naval Air Stations	ANG Base	AFRC Base	GSU	AFR Support	Other
State	Installation												
GA	Dobbins ARB	S								✓			
	Glynco	S									✓		
	Hunter	S				✓							
	Middle Georgia Regional	S		✓									
	Moody	N					✓						
	Robins	F					✓						
	Savannah - Hilton Head	F		✓									
	Savannah Comm.	S									✓		
Townsend	S	✓											
GU	Andersen	S					✓						
HI	Kalaeloe (Barbers Pt)	S				✓							
	Kekaha (Barking Sands)	S									✓		
	Hickam	F					✓						
	Keaukaha (Hilo Comm.)	S									✓		
	Kahului Comm.	S									✓		
ID	Boise Air Terminal	F		✓									
	Mntn. Home	N					✓						
IL	Abraham Lincoln-Capital	F		✓									
	Greater Peoria	F		✓									
	Scott	F					✓						
IN	Atterbury	S	✓										
	Grissom ARB	N								✓			
	Hulman Regional	F		✓									
	Jefferson Proving	S	✓										
	Fort Wayne	F		✓									
IA	Des Moines	F		✓									
	Fort Dodge	S									✓		
	Sioux Gateway-Bud Day	F		✓									

Installations by State		ANG Flying (F) or Support (S) or Neither (N)	Range	Civilian Airport	NASA Facility	Army Post	USAF Base	Naval Air Stations	ANG Base	AFRC Base	GSU	AFR Support	Other
State	Installation												
KS	Forbes Field	F		✓									
	McConnell	S					✓						
	Smoky Hill	S	✓										
KY	Louisville	F		✓									
LA	Alexandria Int'l	S		✓									
	Barksdale	N					✓					✓	
	Camp Beaugard	S				✓					✓		
	Hammond Comm.	S									✓		
	Jackson Barracks	S									✓		
	NAS JRB New Orleans	F						✓				✓	
ME	Bangor	F		✓									
	South Portland	S									✓		
MD	Andrews	F					✓						
	Martin State	F		✓									
MA	Barnes	F		✓									
	Hanscom	N					✓						
	Milford	S									✓		
	Otis	F							✓				
	Westover	N										✓	
MI	Alpena	S		✓									✓
	Grayling	S	✓										
	W.K. Kellogg	F		✓									
	Selfridge	F							✓				
MN	Duluth	F		✓									
	Minneapolis	F								✓		✓	
MS	Arkabutla Lake	S											✓
	Columbus	N				✓							
	Gulfport	S		✓									✓
	Jackson	F		✓									
	Keesler	N					✓						
	Key Field	F		✓									

Installations by State		ANG Flying (F) or Support (S) or Neither (N)	Range	Civilian Airport	NASA Facility	Army Post	USAF Base	Naval Air Stations	ANG Base	AFRC Base	GSU	AFR Support	Other
State	Installation												
MS	Camp Shelby	S	✓										
MO	Jefferson Barracks	S									✓		
	Lambert-St. Louis	F		✓									
	Ft. Leonard Wood	S	✓										
	Rosecrans Mem.	F		✓									
	Whiteman	N					✓						
MT	Great Falls	F		✓									
	Malmstrom	N					✓						
NE	Lincoln	F		✓									
	Offutt	N					✓						
NV	Reno-Tahoe	F		✓									
	Nellis	N					✓						
NH	Pease Intl. Tradeport	F		✓									
NJ	Atlantic City	F		✓	✓								
	Warren Grove	S	✓										
	McGuire	F					✓						
	Coyle	S	✓										
NM	Cannon	N					✓						
	Holloman	N					✓						
	Kirtland	F					✓						
NY	Ft. Drum	S	✓										
	F.S. Gabreski	F		✓									
	N.E.A.D.S. (Rome)	S									✓		
	Hancock Field	F		✓									
	Niagara Falls	F							✓				
	Schenectady County	F		✓									
	Stewart	F		✓									
NC	Badin	S									✓		
	Charlotte/Douglas	F		✓									
	Pope	N					✓						
	Seymour Johnson	N					✓						

Installations by State		ANG Flying (F) or Support (S) or Neither (N)	Range	Civilian Airport	NASA Facility	Army Post	USAF Base	Naval Air Stations	ANG Base	AFRC Base	GSU	AFR Support	Other
State	Installation												
NC	Stanly County	S									✓		
ND	Grand Forks	N					✓						
	Hector	F		✓									
	Minot	N					✓						
OH	Blue Ash	S									✓		
	Mansfield-Lahm	F		✓									
	Camp Perry	S									✓		
	Plumbrook	S			✓								
	Rickenbacker IAP	F		✓									
	Springfield-Beckley	F		✓									
	Toledo Express	F		✓									
	Wright Patterson	N		✓			✓						
	Youngstown-Warren (ARS)	N		✓								✓	
	Zanesville	S									✓		
OK	Altus	S									✓		
	Tinker	F					✓						
	Tulsa	F		✓									
	Vance	N					✓						
	Will Rogers World	S		✓									
OR	Klamath Falls-Kingsley Field	F		✓									
	Portland	F		✓									
	Camp Rilea	S									✓		
PA	Ft. Indiantown Gap	S	✓			✓							
	Harrisburg	F		✓									
	Johnstown	S									✓		
	Pittsburgh	F		✓									
	State College	S									✓		
	Willow Grove	F											✓
PR	Fort Allen	N				✓					✓		
	Luis Munoz	F		✓									

Installations by State		ANG Flying (F) or Support (S) or Neither (N)	Range	Civilian Airport	NASA Facility	Army Post	USAF Base	Naval Air Stations	ANG Base	AFRC Base	GSU	AFR Support	Other
State	Installation												
PR	Punta Boriquen	S									✓		
	Punta Salinas	S									✓		
RI	Coventry	S									✓		
	North Smithfield	S									✓		
	Quonset State	F	✓										
SC	Charleston	N					✓					✓	
	McEntire	F										✓	✓
	Shaw	N					✓						
SD	Ellsworth	N					✓						
	Joe Foss Field	F	✓										
TN	Arnold	N					✓						
	Lovell Field	S									✓		
	McGhee Tyson	F		✓									
	Memphis	F		✓									
	Nashville	F		✓									
TX	Fort Bliss	S				✓							
	Brooks	N					✓						
	Carswell ARB	F								✓			
	Dyess	N					✓						
	Ellington Field	F		✓									
	Garland	S									✓		
	Goodfellow	N											
	Hensley	S									✓		
	Kelly Field Annex	F					✓						
	Lackland	S					✓						
	LaPorte Laughlin	S									✓		
	Camp Mabry	S									✓		
	McMullen	S	✓					✓					
	Randolph	N					✓					✓	
Sheppard	N					✓							
UT	Francis Peak	S									✓		

Installations by State		ANG Flying (F) or Support (S) or Neither (N)	Range	Civilian Airport	NASA Facility	Army Post	USAF Base	Naval Air Stations	ANG Base	AFRC Base	GSU	AFR Support	Other
State	Installation												
UT	Hill	N										✓	
	Salt Lake City	F		✓									
VT	Burlington	F		✓									
VA	Langley	F					✓						
	Camp Pendleton	S									✓		
	Richmond	S									✓		
VI	St. Croix	S									✓		
WA	Camp Murray	S									✓		
	Four Lake Comm.	S									✓		
	McChord	S					✓						
	Seattle	S									✓		
	Spokane	S									✓		
	Paine Field	S									✓		
	Fairchild	F					✓						
WV	EWRVA Shepherd	F		✓									
	Yeager	F		✓									
WI	Dane County-Truax	F		✓									
	General Mitchell	F		✓									
	Hardwood	S	✓										
	Volk Field	S											✓
WY	Cheyenne	F		✓									
	Francis E. Warren	N					✓						

Installation Overview	
Type	Number of Facilities
Ranges	15
Civilian Airports	69
NASA Facilities	3
Army Posts	9
USAF Bases	62 (22 Guard Presence)
Naval Air Stations	3
ANG Bases	2
AFRC Bases	7
GSU	54
AFR Support	9
Other	5
Total ANG Sites	177

ANG Range Disposition

Source: NGB/A3

Range	Parent Unit / Scheduling Agency	Capabilities	Personnel (Full-time/Military) (Authorized/Funded)
Primary Training Ranges			
Airburst Primary Training Range, CO	<p>Parent: 140WG (F-16C), Buckley AFB, Denver, CO</p> <p>Scheduler: 140WG DET DSN: 691-3273 Com: (719) 526-3273</p>	<p>Ordnance: 20MM, 30MM 7.62MM, BDU-33, MK-106, 2.75"Rx (lead head), heavyweight inerters up to 2000 lbs, Mk-24 illumination flares, countermeasures flares, 40MM grenades, limited LGB/JDAM deliveries, no live ordnance</p> <p>Night Ops: Yes; ground illuminated bomb circle; airborne flares may be approved on a case-by-case basis, infrared (IR) targets, night vision goggles (NVG) operations</p> <p>Spec Cap: Combat LASER approved, LASER camera for LASER boresight, SOFLAM LTD, SeeSpot</p> <p>Threat Sim: Smoky SAMs (SS), RWR LTE, MWS Simulator</p> <p>Drop Zones: 1 for C-130/C-17/Helo.</p>	<p>Full Time: 12 Military: 14 Officers: 2/2 Enlisted: 12/10</p>
Atterbury Primary Training Range, IN	<p>Parent: Joint Forces Air Command, Indiana ANG, Stout Field, Indianapolis, IN</p> <p>Scheduler: Atterbury Range</p> <p>DSN: 569-2114 Com: (812) 526-1114</p>	<p>Ordnance: 20MM, 30MM, 7.62MM, BDU-33/MK-106, MK 82 (inert), MK 84 (inert), 2.75" RX (lead head and BDU)</p> <p>Night Ops: Yes</p> <p>Spec Cap: Laser Target Designator Scoring System (LTDSS), Laser certified, Laser Designator, SLT</p> <p>Threat Sim: SS, RWR LTE, well-developed threat packages, chaff and flares</p> <p>Drop Zones: No</p>	<p>Full Time: 13 Military: 14 Officers: 2/2 Enlisted: 11/11</p>

Range	Parent Unit / Scheduling Agency	Capabilities	Personnel (Full-time/Military) (Authorized/Funded)
Bollen Primary Training Range, PA	<p>Parent: 193 SOW, Middletown, PA</p> <p>Scheduler: DET1, 193 SOW, Annville, PA</p> <p>DSN: 423-1136</p> <p>Com: (717) 861-1136</p>	<p>Ordnance: 20MM, 30MM, 7.62MM, BDU-33, MK-106, 2.75" Rx (lead head), BDU-50/56, LGB</p> <p>Night Ops: Yes; covert lighting, AAA/small arms simulator</p> <p>Spec Cap: 4 staff JTACs(TAC-I/SEE), LTD</p> <p>Threat Sim: SS, self defense flares, Laser ops, heated IR targets, RWR LTE</p> <p>Drop Zones: 2 drop zones for TAC Airlift Ops. (day/night/conventional/covert lighting)</p>	<p>Full Time: 8</p> <p>Military: 10</p> <p>Officers: 2/2</p> <p>Enlisted: 9/6</p>
Cannon Primary Training Range, MO	<p>Parent: 131FW (F-15 C/D), St Louis, MO</p> <p>Scheduler: 131FW/DET 1 Cannon Range through Fort Leonard Wood (US Army)</p> <p>DSN: 824-7297</p> <p>Com: (314) 527-7297</p>	<p>Ordnance: 20MM, 30MM, BDU-33, MK-106, 2.75" Rx (lead head), heavyweight inerts, countermeasures chaff and flares</p> <p>Night Ops: Yes, NVG equipped, no illum flares</p> <p>Spec Cap: mobile IR target, combat laser, LTD, SeeSpot, IR Marker, SADL Gateway</p> <p>Drop Zones: 3 certified drop zones, "Sling Shot" and "Cannon Free Fall"</p>	<p>Full Time: 11</p> <p>Military: 14</p> <p>Officers: 2/2</p> <p>Enlisted: 12/9</p>
Adirondack Intermediate Range, NY	<p>Parent: 174FW (F-16C/D), Hancock Field, Syracuse, NY</p> <p>Scheduler: 174FW Range Ops Officer</p> <p>DSN: 772-5990/2835</p> <p>Com: 315-772-5990</p>	<p>Ordnance: 20MM(TP/HE), 30MM(TP/HE), 7.62MM, BDU-33, MK 81/82/84 (inert), 2.75" Rx (TP/HE)</p> <p>Main Impact Area: same + 20/30MM(HEI), live MK 82s, MK-20s, 2.75" Rx (WP/TP/HE)</p> <p>Night Ops: Yes</p> <p>Spec Cap: SOFLAM LTD, LSTSS; mobile active IR target (no-drop), mover strafe, pop-up targets</p> <p>Threat Sim: Smoky SAMs; RWR LTE; WRETS;chaff/flares may be used in Main Impact Area</p> <p>Drop Zones: No</p>	<p>Full Time: 11</p> <p>Military: 14</p> <p>Officers: 2/2</p> <p>Enlisted: 12/12</p>

Range	Parent Unit / Scheduling Agency	Capabilities	Personnel (Full-time/Military) (Authorized/Funded)
Grayling Intermediate Training Range, MI	<p>Parent: Alpena Combat Readiness Training Center (CRTC), Alpena County Airport, Alpena, MI</p> <p>Scheduler: Grayling Air Gunnery Range DSN: 741-3335 Com: (989) 939-8880</p>	<p>Ordnance: Main impact area: 20MM(TP), 30MM(TP), 7.62MM, BDU-33/MK-106, MK 82/84 (inert), LGB, 2.75" Rx(lead head), Artillery Impact Area (air score only) live ordnance up to MK 82, Rx(WP/HEI), Strafe(HEI)</p> <p>Night Ops: Yes, NVG capable/compatible</p> <p>Spec Cap: SOFLAM LTD, LES-M, IR Marker, SeeSpot</p> <p>Threat Sim: JTE, RWR LTE, SS, aircraft can employ chaff (with specific authorization) and flares</p> <p>Drop Zones: 2</p>	<p>Full Time: 8 Military: 8 Officers: 2/1 Enlisted: 10/7</p>
Hardwood Intermediate Training Range, WI	<p>Parent: ANG CRTC, Volk Field ANG Base, Camp Douglas, WI</p> <p>Scheduler: ANG Combat Readiness Training Center DSN: 871-1555 Com: (608) 427-1555</p>	<p>Ordnance: 20MM, 30MM, 7.62MM, .50 cal, BDU-33, BDU-38, MK-76, MK-106, MK 81/82/84/117 (inert). LGB. 2.75" Rx (lead)</p> <p>Night Ops: Yes</p> <p>Spec Cap: Target IR Sources, no-drop scoring through ACTS/ACMI</p> <p>Threat Sim: SS, flare, ACTS linked single-digit SAM and AAA unmanned threat emitters systems (UMTES), RWR LTE</p> <p>Drop Zones: No</p>	<p>Full Time: 8 Military: 8 Officers: 2/2 Enlisted: 10/6</p>
Jefferson Primary Training Range, IN	<p>Parent: Joint Forces Airc Command (JFAC-IN), IN ANG, Stout Field, Indianapolis, IN</p> <p>Scheduler: Jefferson Range DSN: 724-1116 Com: (812) 689-7295</p>	<p>Ordnance: 20MM, 30MM, BDU-33, MK-82 (inert), 2.75 Rx (inert), LGB</p> <p>Night Ops: Yes, NVG capable</p> <p>Spec Cap: Laser Scoring System (LSTSS), SOFLAM LTD, IR Marker</p> <p>Threat Sim: SS, RWR LTE</p> <p>Drop Zones: No</p>	<p>Full Time: 9 Military: 12 Officers: 2/2 Enlisted: 9/7</p>

Range	Parent Unit / Scheduling Agency	Capabilities	Personnel (Full-time/Military) (Authorized/Funded)
McMullen Primary Training Range, TX	<p>Parent: NAS Kingsville</p> <p>Scheduler: 149 FW/Det-1cc or RCO</p> <p>DSN: 969-6061/6003</p> <p>Com: (210) 977-6062</p>	<p>YANKEE: ANG north target complex, class A</p> <p>Ordnance: 20MM, BDU-33, Mk-106, MK-82(inert), 2.75 Rx (lead head)</p> <p>Night Ops: Yes, Most Targets</p> <p>Spec Cap: No</p> <p>Threat Sim: RWR LTE & Smoky SAM</p> <p>DIXIE : Navy south target complex, class B/C</p> <p>Ordnance: 20MM, BDU-33, Mk-106, 2.75 Rx (lead head)</p> <p>Night Ops: Nil</p> <p>Spec Cap: Nil</p> <p>Threat Sim: Nil</p> <p>Drop Zones: No</p>	<p>Full Time: 7</p> <p>Military: 9</p> <p>Officers: 2/1</p> <p>Enlisted: 7/6</p>
Razorback Primary Training Range, AR	<p>Parent: 188FW, Fort Smith, AR</p> <p>Scheduler: 188FW/DET 1</p> <p>DSN: 778-5171</p> <p>Com: (479) 573-5171</p>	<p>Ordnance: 20MM, 30MM, BDU-33, MK-106, BDU-48, inert bombs up to 2000 lbs, 2.75 Rx (inert), chaff, self-protect & illum flare</p> <p>Night Ops: NVGs, Ground Commander's Pointer, Warrior IZLID II, Warrior Glo Tape, IR (covert) lights, various IR beacons and spotlights, and standard conventional circle lighting.</p> <p>Spec Cap: SOFLAM LTD, SeeSpot, SADL, all tactical targets are laser certified. Ten targets can be engaged by LGBs up to 2,000 pounds.</p> <p>Threat Sim: SS, RWR LTE</p> <p>Drop Zone: Yes</p>	<p>Full Time: 8</p> <p>Military: 11</p> <p>Officers: 2/1</p> <p>Enlisted: 9/7</p>

Range	Parent Unit / Scheduling Agency	Capabilities	Personnel (Full-time/Military) (Authorized/Funded)
Shelby Intermediate Training Range, MS	<p>Parent: ANG CRTC, Gulfport, MS</p> <p>Scheduler: CRTC Gulfport in Coordination with Camp Shelby Range Control DSN: 363-6053 Com: (228) 214-6053</p>	<p>Ordnance: 20MM, 30MM, 7.62MM, BDU-33, MK-106, inert MK-82, 2.75" Rx (lead head only on East Range; WP on West Range). West Tactical Range - live ordnance</p> <p>Night Ops: Yes</p> <p>Spec Cap: SLT, LTD, LES-M</p> <p>Threat Sim: SS, flares, RWR LTE</p> <p>Drop Zone: No</p>	<p>Full Time: 12 Military: 12 Officers: 2/2 Enlisted: 12/9</p>
Smoky Hill Intermediate Training Range, KS	<p>Parent: 184ARW, Wichita, KS</p> <p>Scheduler: 184ARE/DET1, Smoky Hill ANG Range DSN: 743-7600 x141 Com: (785) 827-9611</p>	<p>Ordnance: 20MM, 30MM, 7.62, 50cal, BDU-33/38/48/50/56, 2.75 Rx, GBU-10/12/31(inerts), chaff, flares, Smoky Devils</p> <p>Night Ops: Yes</p> <p>Spec Ops: Laser and LGB approved, IR Marker, LTD, LES-M</p> <p>Threat Sim: SS, chaff, flares, ECCM, Multiple Threat Emitter System/Threat Reaction Analysis Indicator System (MUTES/TRAINS), RWR LTE</p> <p>Drop Zone: No</p>	<p>Full Time: 23 Military: 23 Officers: 2/2 Enlisted: 21/21</p>
Townsend Intermediate Training Range, GA	<p>Parent: ANG CRTC, Savannah International Airport (IAP), GA</p> <p>Scheduler: ANG CRTC/OTR, Townsend Range, GA DSN: 860-3007 Com: (912) 963-3007 townsend.range@gacrtc.ang.af.mil</p>	<p>Ordnance: 5.56, 7.62, 50cal, 20MM, 25MM, 30MM, BDU-33, BDU-48, MK-76, MK-106, all GP bombs (inert), 2.75 Rx (lead head and WP), LGTRs</p> <p>Night Ops: Yes. Mon-Thurs: Other by Request</p> <p>Spec Cap: SOFLAM LTD, SeeSpot, IR Marker, LSTSS, LES-M, Active IR Tgts.</p> <p>Threat Sim: Mini-IADS of Real Threat Systems, Triple Ground Threat Emitter, SS, chaff, RWR LTE</p> <p>Drop Zone: No</p>	<p>Full Time: 13 Military: 13 Officers: 2/2 Enlisted: 14/11</p>

Range	Parent Unit / Scheduling Agency	Capabilities	Personnel (Full-time/Military) (Authorized/Funded)
Warren Grove Primary Training Range, NJ	<p>Parent: 177th FW, Atlantic City ANGB, NJ</p> <p>Scheduler: Warren Grove Range DSN: 455-6700 Com: (609) 677-6700</p>	<p>Ordnance: 20MM, 30MM, 7.62MM, BDU-33, MK-76, MK-106, BDU-50/56, 2.75 Rx (lead head & sig)</p> <p>Night Ops: Yes</p> <p>Spec Cap: SOFLAM LTD, SeeSpot, IR Marker, LSTSS, LES-M, Active IR Tgts.</p> <p>Threat Sim: SS, Flares, RR-188 chaff, RWR LTE</p> <p>Drop Zone: Coyote DZ</p>	<p>Full Time: 10 Military: 10 Officers: 2/2 Enlisted: 10/8</p>
Instrumented Air Combat Training System (ACTS)			
Alpena ACTS, MI	<p>Parent: Alpena CRTC, Alpena, MI</p> <p>Scheduler: Alpena CRTC, Alpena, MI DSN: 741-3205 Com: (989) 354-6205</p>	<p>Ordnance Simulation: AIM-120D, AIM-9, all standard US and Russian AAMs, weapons hypothesizer</p> <p>Night Ops: Yes</p> <p>Spec Cap: UHF & SHF Datalink for pod-to-pod communications</p>	<p>Officers: 2/0 Enlisted: 5/2</p>
Gulfport ACTS, MS	<p>Parent: CRTC Gulfport, MS at Gulfport-Biloxi Regional Airport</p> <p>Scheduler: ANG CRTC-Gulfport DSN: 363-6025/7 Com: (228) 214-6025/7</p>	<p>Ordnance Simulation: AIM-7E2/F/M, AIM-54A/C, AIM-9D/G/H/L/M/P, AA-2B/D AA-7A/C/D, AA-8, AA-10A, AA-11, AGM-45A/B, AIM-120A, ARM, G-23 gun, M-61 gun, GAU-8 gun, MK-20, MK-76, MK-82/83/84, MK-106, WLEY, MK-54/55/56, APAM, B-48B, LM-82, LM-84, LASRDSG</p> <p>ATTN: ACTS/ Scheduling 4715 Hewes Ave, Bldg 1 Gulfport, MS 39507- 4324</p> <p>Night Ops: Yes</p> <p>Spec Cap: Datalink</p> <p>Threat Sim: MoTES</p>	<p>Officers: 2/1 Enlisted: 2/2</p>

Range	Parent Unit / Scheduling Agency	Capabilities	Personnel (Authorized/ Funded)
Savannah ACTS, GA	Parent: CRTC, Savannah, GA Scheduler: Savannah CRTC DSN: 860-3496/3204 Com: (912) 963-3496/3204	Ordnance Simulation: AIM-7E2/F/M, AIM-120, AA-7A, AA-7C, AA-9, AIM-9D/G/H/J/J1/M/P Night Ops: Yes Spec Cap: Microwave datalink	Officers: 2/2 Enlisted: 4/4 O&M Contractor: 7/7
Volk ACMI, WI	Parent: CRTC Volk Field ANGB, Camp Douglas, WI Scheduler: ANG CRTC, Volk Field, WI DSN: 871-1443 Com: (608) 427-1443	Ordnance Simulation: AIM-7E2/F/M, AIM-54A./C, AIM-9D/G/H/L/M/P, AA-2B/D, AA-7A/C/D, AA-8, AGM-45A/B, AIM-120A, ARM, G-23 gun, M-61 gun, GAU-8 gun, MK-20, MK-76, MK-82/83/84, MK-106, WLEY, MK-54/55/56, APAM, B-48B, LM-82, LM-84, LASRDSG Night Ops: Yes Threat Sim: SA-2, SA-3, SA-6, SA-8, ZSU-23, Firecan, Tank, and Flapwheel Spec Cap: Microwave datalink, SADL	Officers: 2/2 Enlisted: 4/2
Range Support Squadron			
266th Range Squadron, ID	Parent: 124WG IDANG, Gowen Field, Boise, ID Scheduler: 366 OSS/OSOS, DSN: 728-2172 will schedule range periods; 266 RANS/JOJ, DSN: 728-6835 will schedule range threats. DSN: 728-6392 Com: (208) 828-6362	Night Ops: Yes Spec Cap: Can deploy anywhere to simulate realistic threat environment for all armed forces and National Guard, Cowboy Control is a full-up MRU with a CAOC control room & Battle Cab for LFE Threat Sim: SS, Smoky Guns, Tactical Radar Threat Generator, Mobile Threat Emitter, Threat Reaction Analysis Indicator System, Multiple Threat Emitter System, Mini Multiple Threat Emitter System, Seek Score, Laser Designator, Joint Threat Emitter	Officers: 4/4 Enlisted: 130/126

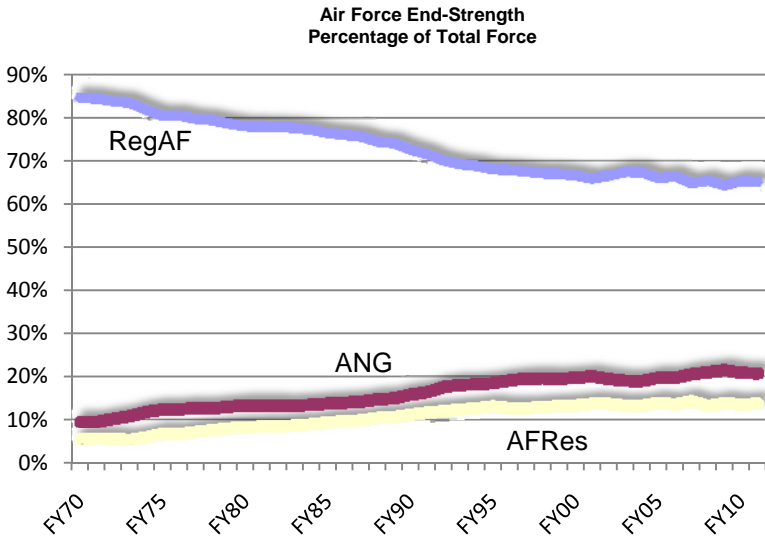
Chapter 3:

Total Force Personnel

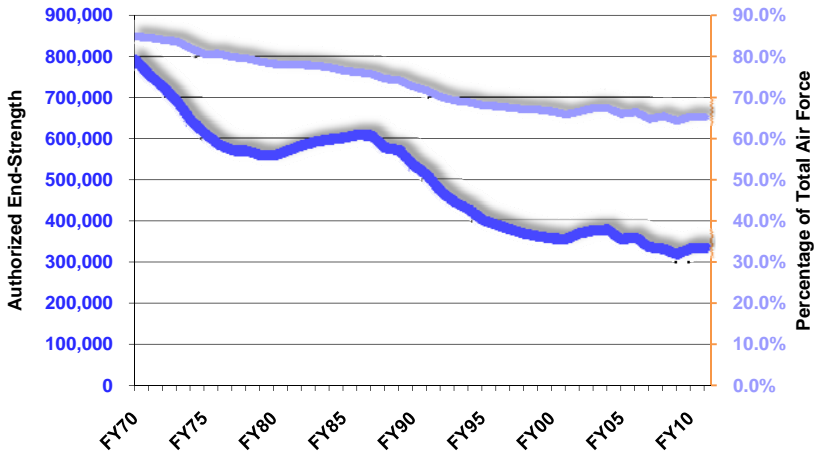
Manpower and Demographics

Total Force Endstrength, FY95 – FY09

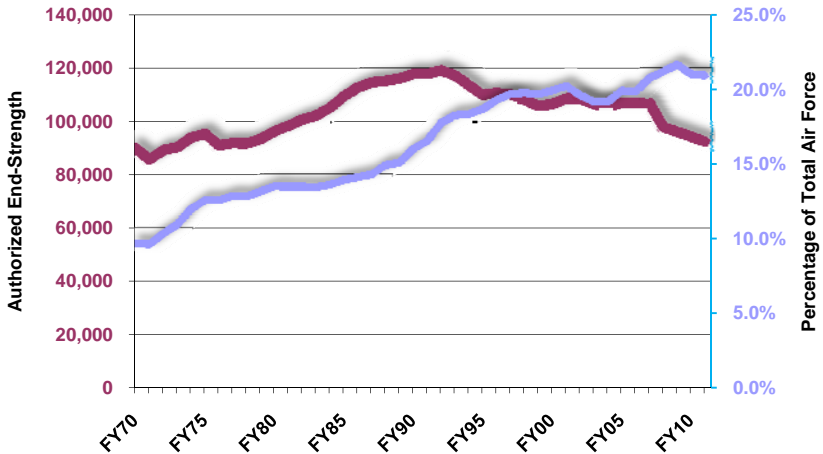
Source: NGB/A1

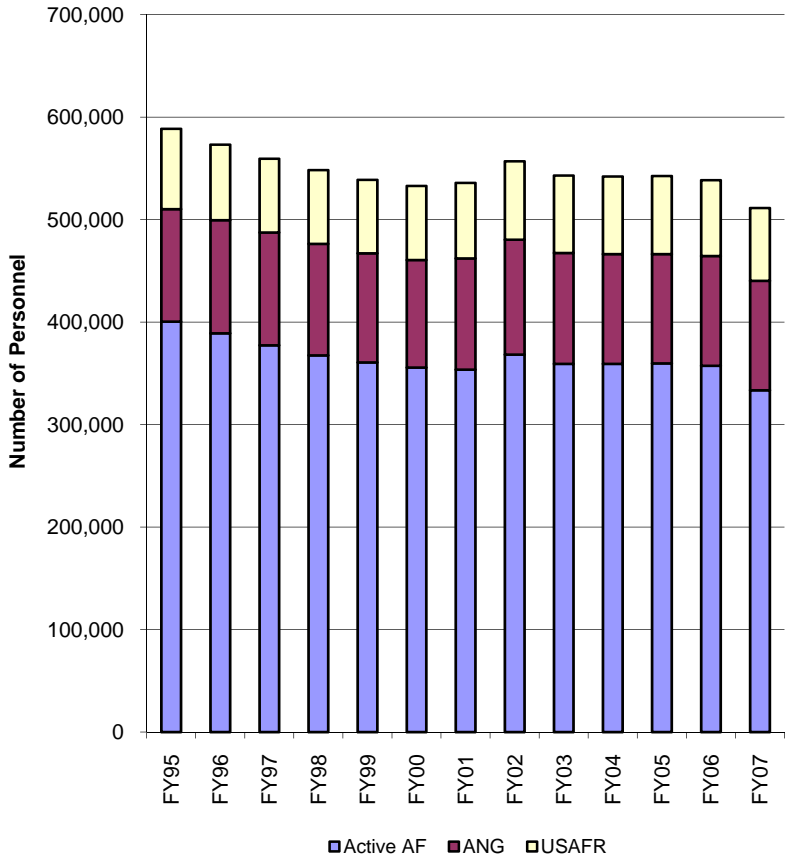


Regular Air Force Authorized End-Strength



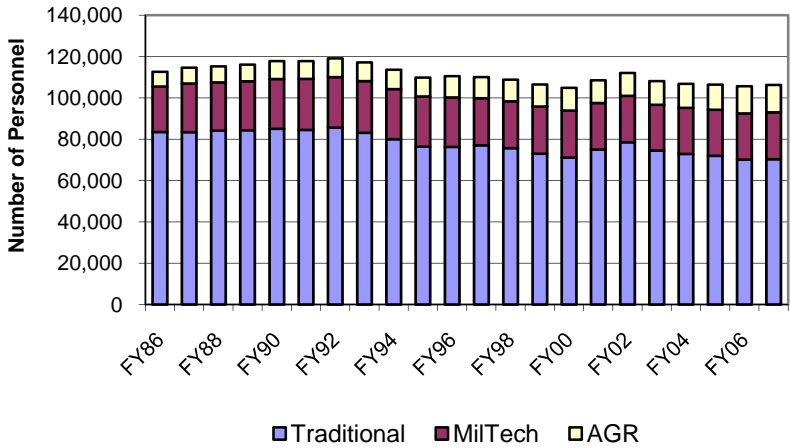
Air National Guard Authorized End-Strength





ANG Total Endstrenth, FY65 – FY09

Source: NGB/A1



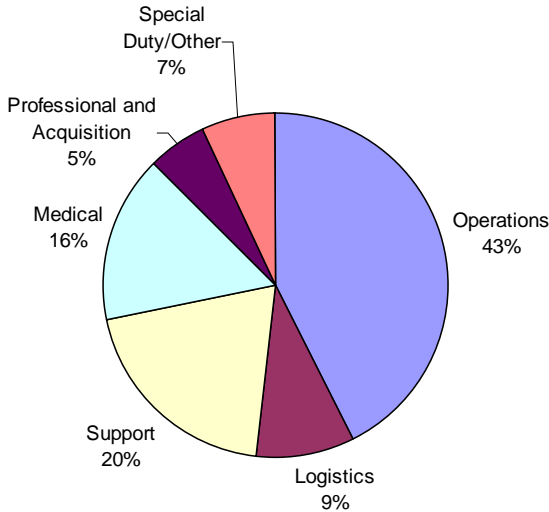
ANG Total Endstrenth, FY65 – FY09

Source: NGB/A1

FY	Traditional	%	MilTech	%	AGR	%	TOTAL
FY86	83,489	74.15%	22,005	19.54%	7,098	6.30%	112,592
FY87	83,412	72.79%	23,560	20.56%	7,623	6.65%	114,595
FY88	84,103	72.99%	23,409	20.32%	7,709	6.69%	115,221
FY89	84,354	72.68%	23,688	20.41%	8,019	6.91%	116,061
FY90	85,026	72.19%	24,119	20.48%	8,641	7.34%	117,786
FY91	84,453	71.70%	24,703	20.97%	8,630	7.33%	117,786
FY92	85,570	71.86%	24,471	20.55%	9,042	7.59%	119,083
FY93	83,115	70.94%	24,958	21.30%	9,089	7.76%	117,162
FY94	79,971	70.41%	24,304	21.40%	9,312	8.20%	113,587
FY95	76,339	69.51%	24,360	22.18%	9,127	8.31%	109,826
FY96	76,293	69.05%	23,931	21.66%	10,260	9.29%	110,484
FY97	77,075	70.05%	22,771	20.70%	10,179	9.25%	110,025
FY98	75,631	69.52%	22,699	20.86%	10,462	9.62%	108,792
FY99	72,936	68.50%	22,857	21.47%	10,683	10.03%	106,476
FY00	71,066	67.76%	22,758	21.70%	11,053	10.54%	104,877
FY01	74,997	69.13%	22,517	20.76%	10,973	10.11%	108,487
FY02	78,509	70.05%	22,449	20.03%	11,117	9.92%	112,075
FY03	74,522	68.91%	22,136	20.47%	11,480	10.62%	108,138
FY04	72,857	68.20%	22,328	20.90%	11,637	10.89%	106,822
FY05	71,951	67.60%	22,268	20.92%	12,211	11.47%	106,430
FY06	70,052	66.30%	22,401	21.20%	13,207	12.50%	105,660
FY07	70,331	66.19%	22,674	21.34%	13,249	12.47%	106,254
FY08	71,895	66.78%	21,995	20.43%	13,829	12.83%	107,679
FY09	71,895	66.60%	22,281	20.40%	14,175	13.00%	109,196

ANG Personnel by Career Fields, FY97 – FY09, Officers

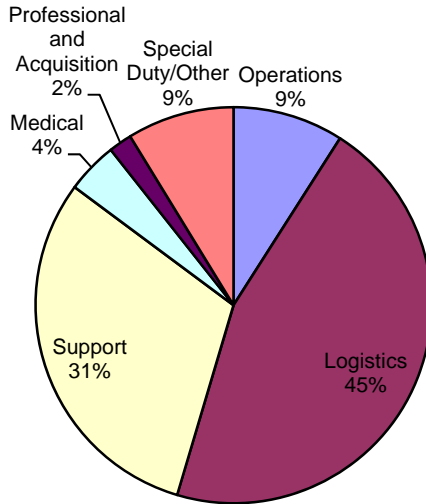
Source: NGB/A1



FY	Operations	Logistics	Support	Medical	Professional and Acquisition	Special Duty /Other	Total
FY97	5,612	1,302	2,739	2,046	644	12,343	12,343
FY98	5,559	1,304	2,631	2,065	656	12,215	12,215
FY99	5,538	1,286	2,620	2,070	669	12,183	12,183
FY00	5,471	1,258	2,570	2,134	663	12,096	12,096
FY01	5,575	1,305	2,629	2,124	716	12,349	12,349
FY02	5,829	1,380	2,717	2,253	750	1,003	13,932
FY03	5,738	1,346	2,719	2,189	758	952	13,702
FY04	5,708	1,298	2,710	2,154	765	999	13,634
FY05	5,743	1,260	2,747	2,156	766	1,000	13,672
FY06	5,799	1,264	2,758	2,195	769	997	13,782
FY07	5,944	1,306	2,801	2,228	761	985	14,025
FY08	1,227	2,303	6,066	790	938	2,791	14,115
FY09	6,190	1,241	2,724	2,362	818	991	14,326

ANG Personnel by Career Field, FY97 – FY07, Enlisted

Source: NGB/A1

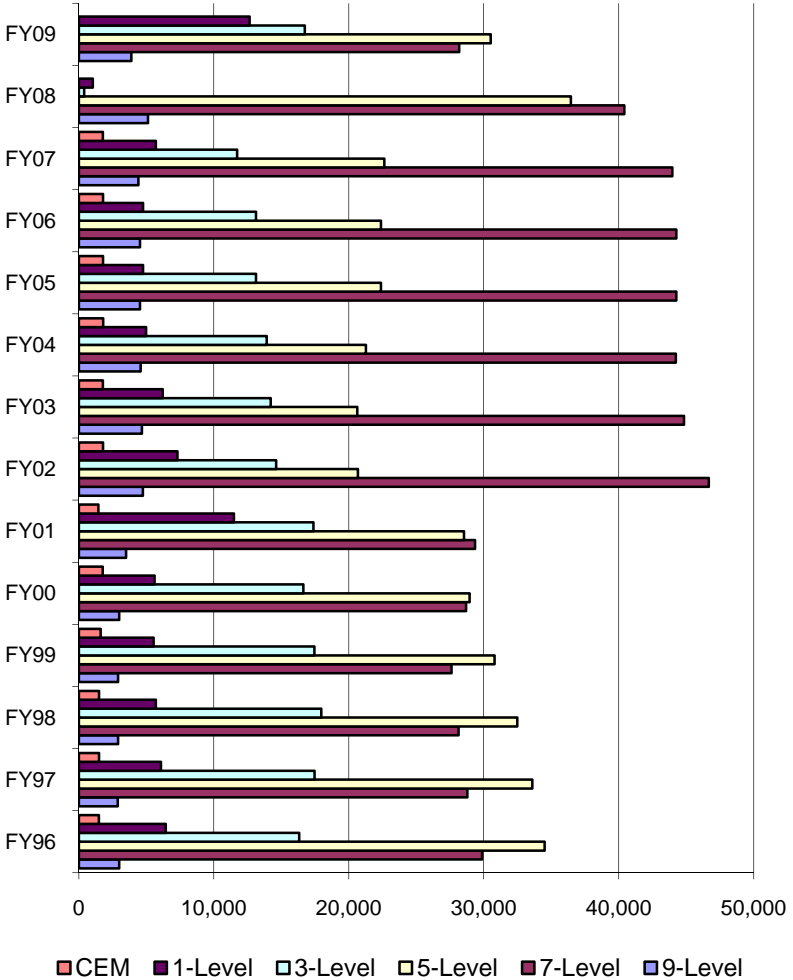


FY	Operations	Logistics	Support	Medical	Professional and Acquisition	Special Duty /Other	Total
FY97	6,687	46,767	30,220	4,933	1,795	90,402	90,402
FY98	6,679	45,816	29,651	4,879	1,747	88,772	88,772
FY99	6,704	44,373	28,526	4,678	1,723	86,004	86,004
FY00	6,719	43,745	28,024	4,577	1,691	84,756	84,756
FY01	7,419	47,277	30,474	4,850	1,781	91,801	91,801
FY02	7,677	46,429	30,203	4,683	1,804	7,346	98,142
FY03	7,857	45,462	29,205	4,388	1,755	5,769	94,436
FY04	8,073	44,847	28,843	4,330	1,778	5,317	93,188
FY05	8,084	44,036	28,568	4,092	1,756	6,222	92,758
FY06	8,098	42,602	27,969	3,869	1,749	7,591	91,878
FY07	8,345	42,012	28,192	3,863	1,752	8,065	92,229
FY08	40,642	3,935	9,412	1,762	9,028	28,785	93,564
FY09	9,821	39,825	28,890	3,939	1,738	10,657	94,870

ANG Skill Levels – Total and by Career Field

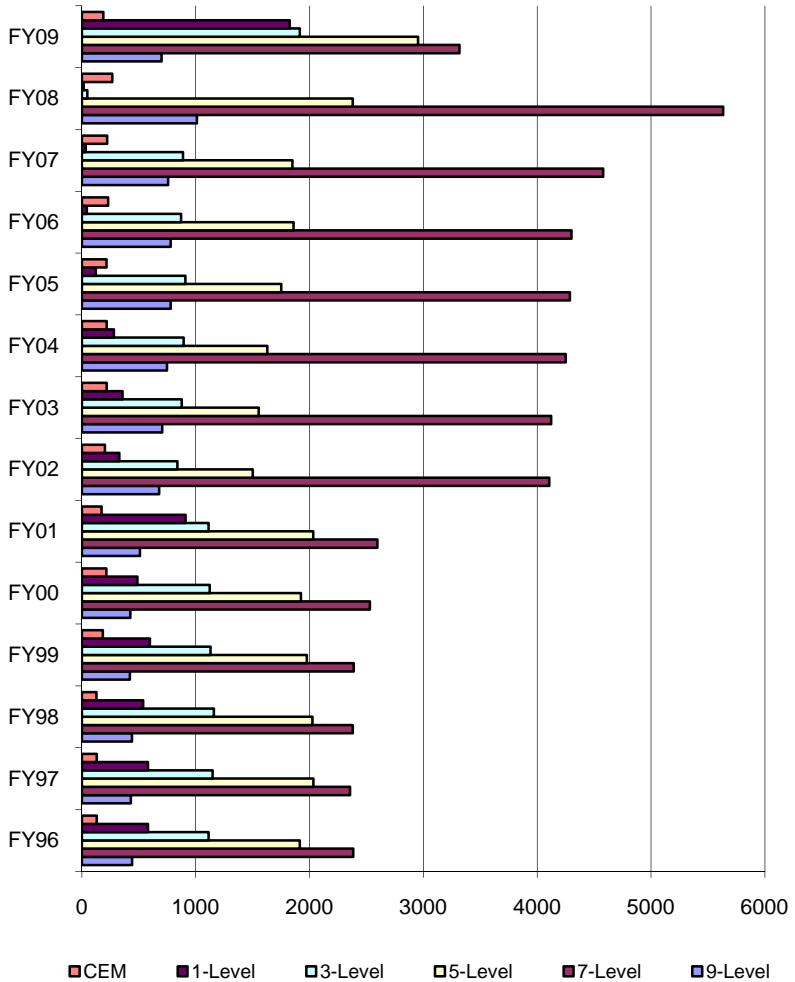
ANG Enlisted Skill Levels – Total, FY96 – FY09

Source: NGB/A1



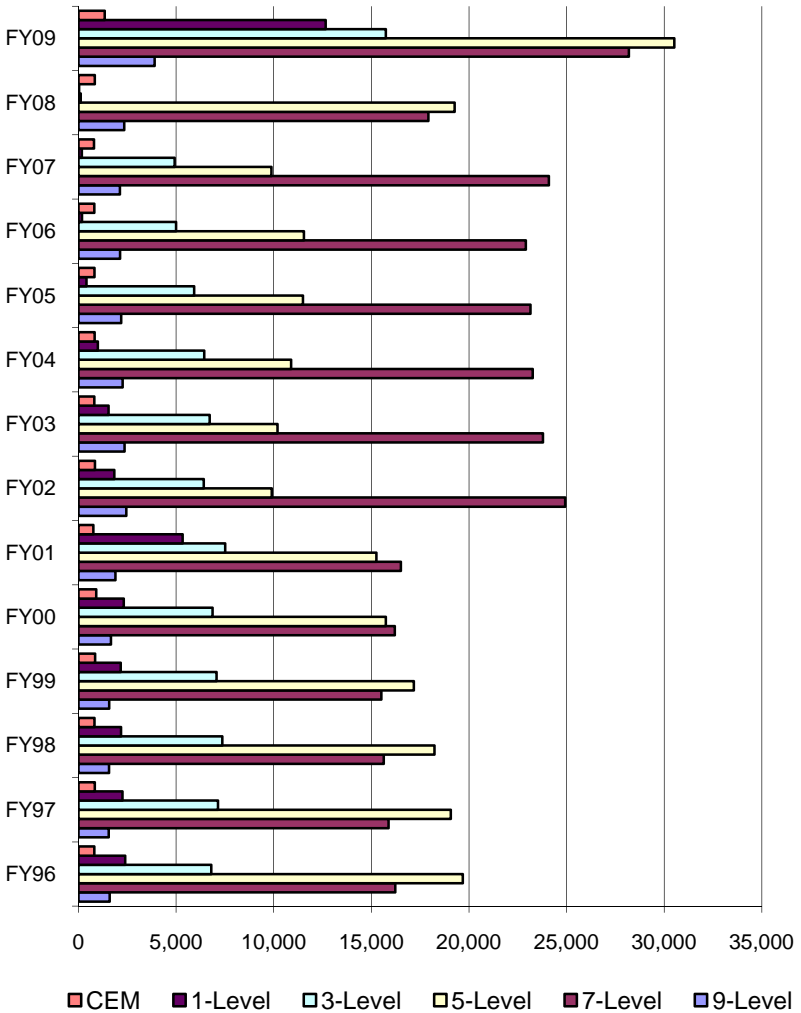
ANG Enlisted Skill Levels by Career Field – Operations, FY96 – FY09

Source: NGB/A1



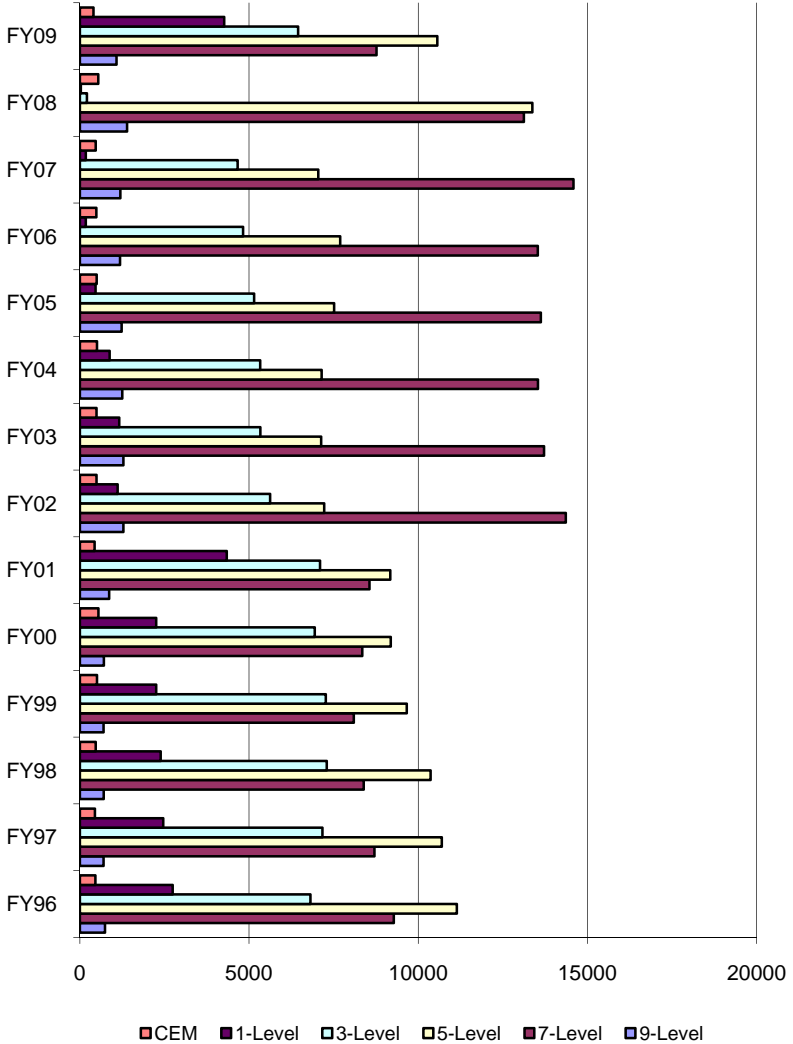
ANG Enlisted Skill Levels by Career Field – Logistics, FY96 – FY09

Source: NGB/A1



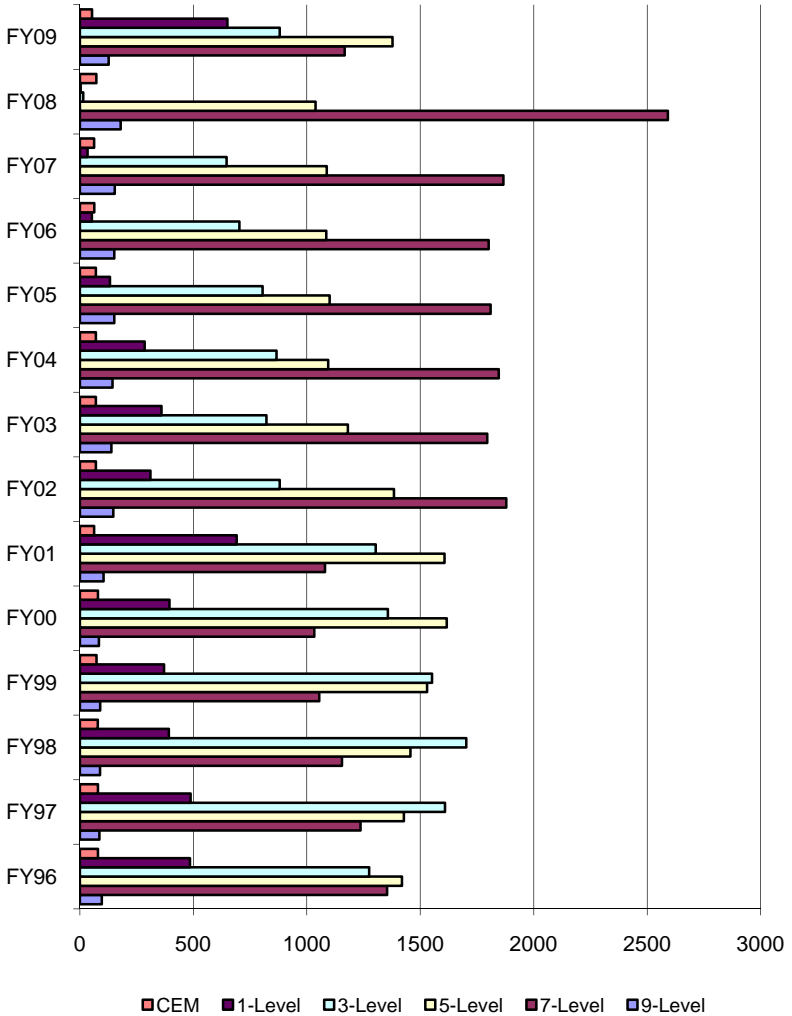
ANG Enlisted Skill Levels by Career Field – Support, FY96 – FY09

Source: NGB/A1



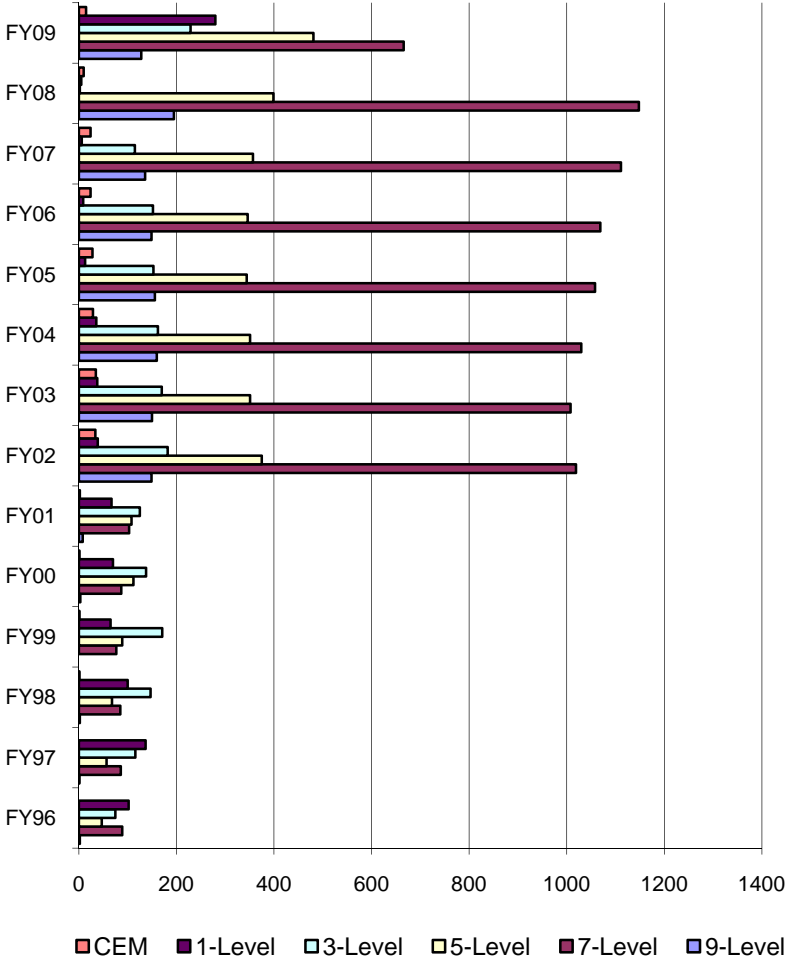
ANG Enlisted Skill Levels by Career Field – Medical, FY96 – FY09

Source: NGB/A1



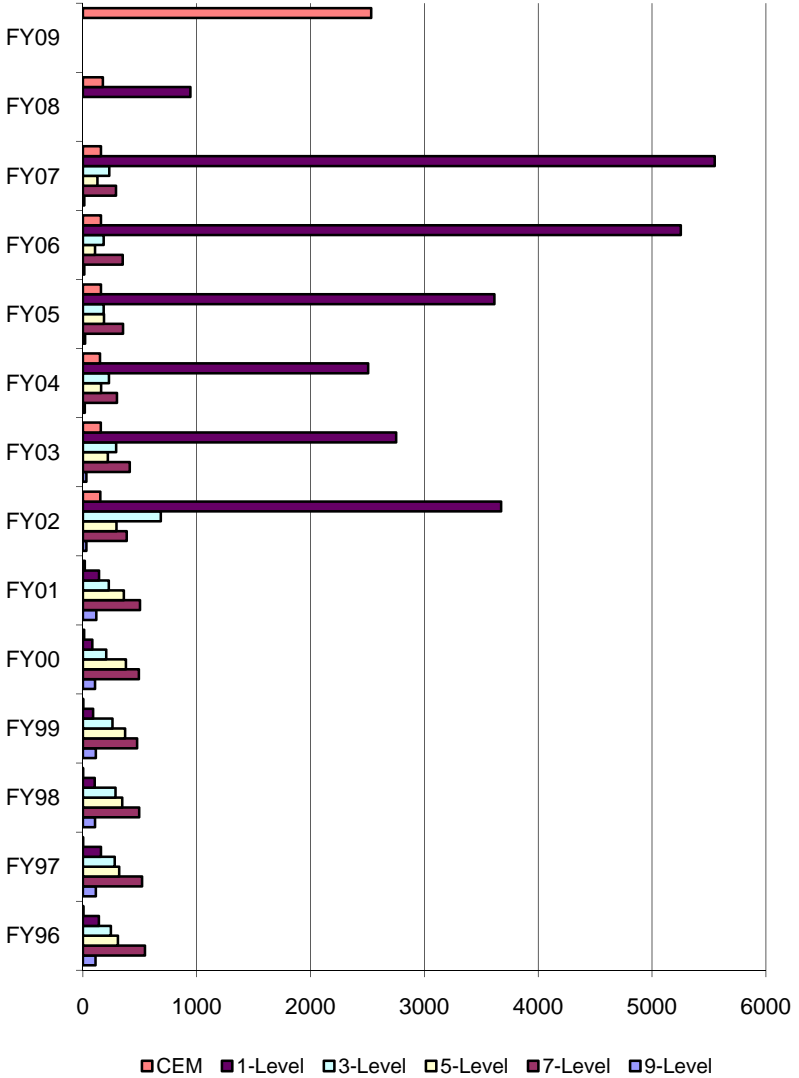
ANG Enlisted Skill Levels by Career Field – Professional, FY96 – FY09

Source: NGB/A1



ANG Enlisted Skill Levels by Career Field – Special Duty/Other, FY96 – FY09

Source: NGB/A1



Selected Reserve Strength by State

Selected Reserve Strength by State

Source: OASD(RA)

STATE	ARNG	USAR	USNR	USMCR	ANG	USAFR	USCGR	TOTAL
ALABAMA	11282	5355	382	687	2299	1293	159	21457
ALASKA	1885	375	85	37	1963	201	50	4596
ARIZONA	5297	2644	959	564	2570	1152	2	13188
ARKANSAS	8548	2262	205	164	1926	170	0	13275
CALIFORNIA	16920	13518	9579	4704	4586	7677	934	57918
COLORADO	3669	3041	889	429	1488	2478	13	12007
CONNECTICUT	3226	1186	402	226	1088	3	113	6244
DELAWARE	1496	342	114	145	1046	1647	1	4791
WASH., D.C.	1300	1525	1894	383	1157	179	128	6566
FLORIDA	10005	9935	5328	1250	2001	5169	1045	34733
GEORGIA	11060	9563	1898	1094	2751	2843	115	29324
GUAM	1108	580	17	0	445	274	0	2424
HAWAII	2814	2623	686	78	2323	584	129	9237
IDAHO	3442	677	146	101	1485	30	0	5881
ILLINOIS	10160	6188	2749	1339	3028	1393	93	24950
INDIANA	12927	3487	358	592	1864	1457	7	20692
IOWA	7382	2556	159	186	2052	0	6	12341
KANSAS	5493	3198	154	208	2083	455	27	11618
KENTUCKY	7299	4177	286	256	1183	2	82	13285
LOUISIANA	9376	2617	1970	1066	1554	1675	197	18455
MAINE	2124	507	915	132	1143	0	92	4913
MARYLAND	4948	5066	2011	410	1804	1762	214	16215
MASSACHUSETTS	6320	3033	342	829	2000	2485	500	15509
MICHIGAN	9280	3377	1123	1143	2650	14	165	17752
MINNESOTA	11419	3389	711	434	2380	1360	35	19728
MISSISSIPPI	9961	2143	868	158	2589	1579	134	17432
MISSOURI	8957	5477	1499	3621	2727	1128	102	23511

STATE	ARNG	USAR	USNR	USMCR	ANG	USAFR	USCGR	TOTAL
MONTANA	2676	790	155	64	1018	35	0	4738
NEBRASKA	3800	1812	354	192	1014	325	16	7513
NEVADA	2811	903	425	216	1113	426	2	5896
NEW HAMPSHIRE	1825	866	118	169	980	1	19	3978
NEW JERSEY	6065	4443	912	586	2323	2643	170	17142
NEW MEXICO	3087	677	288	74	972	134	0	5232
NEW YORK	10334	8846	1954	1864	6056	1293	553	30900
NORTH CAROLINA	10288	6782	1183	711	1566	2113	223	22866
NORTH DAKOTA	3227	279	92	43	971	33	0	4645
OHIO	11059	5439	1433	991	5365	3855	298	28440
OKLAHOMA	7814	3038	595	356	2356	1708	11	15878
OREGON	6383	525	576	341	2229	113	143	10310
PENNSYLVANIA	15329	8202	2078	1739	4197	1347	170	33062
PUERTO RICO	7159	4261	342	0	1232	1	47	13042
RHODE ISLAND	2115	357	589	149	1215	0	46	4471
SOUTH CAROLINA	9796	4462	817	443	1209	2394	163	19284
SOUTH DAKOTA	3356	352	128	0	1037	22	0	4895
TENNESSEE	10659	4253	1394	754	3632	12	53	20757
TEXAS	19240	17084	5956	3006	3126	6808	401	55621
UTAH	5359	2586	407	265	1465	1368	0	11450
VERMONT	2687	202	48	0	971	0	18	3926
VIRGIN ISLANDS	759	0	0	0	65	0	6	830
VIRGINIA	7918	7248	5747	1276	1671	1514	614	25988
WASHINGTON	6179	5617	2283	547	2032	2467	498	19623
WEST VIRGINIA	4499	1953	128	276	2325	1	26	9208
WISCONSIN	7616	4976	598	545	2220	1	104	16060
WYOMING	1812	77	74	0	1172	33	0	3168
OVERSEAS	0	1868	1720	12	5	360	33	3998
SHIPS	0	0	797	0	0	0	0	797
UNKNOWN	0	910	998	2783	0	9	0	4700
TOTAL	361550	197649	67918	37638	107722	66026	7957	846460

Chapter 5:

US Congress

ANG Units by State or Territory, Congressional Member, and District

Source: www.senate.gov , www.house.gov

Unit	Member	Party	District
ALABAMA			
SENATOR RICHARD C. SHELBY (R)			
SENATOR JEFF SESSIONS (R)			
225 CBCS	Robert Aderholt	R	4
117 ARW	Spencer Bachus	R	6
187 FW	Artur Davis	D	7
226 CCG			
280 CBCS			
232 CBCS			
ALASKA			
SENATOR MARK BEGICH (D)			
SENATOR LISA MURKOWSKI (R)			
11 RCC	Don Young	R	At Large
168 ARW			
176 WG			
206 CBCS			
210 RQS			
144 AS			
ARIZONA			
SENATOR JOHN MCCAIN (R)			
SENATOR JON KYL (R)			
107 ACS	Ann Kirkpatrick	D	1
104 ACS			
161 ARW	Ed Pastor	D	4
197 ARS			

Unit	Member	Party	District
ARIZONA			
162 FW	Gabrielle Giffords	D	8
195 FS			
148 FS			
152 FS			
AATC			
ARKANSAS			
SENATOR BLANCHE LAMBERT LINCOLN (D)			
SENATOR MARK PRYOR (D)			
123 IS	Vic Snyder	D	2
154 TRS			
189 AW			
188 FW	John Boozman	R	3
223 CBCS	Mike Ross	D	4
CALIFORNIA			
SENATOR DIANNE FEINSTEIN (D)			
SENATOR BARBARA BOXER (D)			
149 CBCS	Daniel E. Lungren	R	3
162 CCG			
SM-ALC			
129 RQW	Nancy Pelosi	D	8
216 EIS	Pete Stark	D	13
234 CBCS			
561 BAND			
144 FW	George Radanovich	R	19
195 WF	Elton Gallegly	R	24
146 AW			
562BAND			
261 CBCS	Brad Sherman	D	27
119 FS, DET 1	Ken Calvert	R	44
163 ARW			
148 SOPS			
210 WF			
222 CBCS	Dana Rohrabacher	R	46
147 CBCS	Susan A. Davis	D	53

Unit	Member	Party	District
COLORADO			
SENATOR MICHAEL BENNET (D)			
SENATOR MARK UDALL (D)			
120 WF	Diana DeGette	D	1
140 WG			
240 CEF			
137 SWS	Mark Udall	D	2
	John T. Salazar	D	3
140 WG, DET 1	Doug Lamborn	R	5
200 AS			
CONNECTICUT			
SENATOR CHRISTOPHER J. DODD (D)			
SENATOR JOSEPH I. LEIBERMAN (I)			
103 FW	Joe Courtney	D	2
103 ACS	Rosa DeLauro	D	3
DELAWARE			
SENATOR TED KAUFMAN (D)			
SENATOR THOMAS CARPER (D)			
166 AW	Michael N. Castle	R	At Large
DISTRICT OF COLUMBIA			
DELEGATE ELEANOR HOLMES NORTON (D)			
113 WG	Eleanor Holmes Norton	D	--
121 WF			
201 AS			
HQ ANG			
121 FS			
FLORIDA			
SENATOR BILL NELSON (D)			
SENATOR MEL MARTINEZ (R)			
1 AF	Allen Boyd	D	2
701 ADS			
702 CSS			
SEADS			
159 WF	Cliff Stearns	R	6
202 RHS			
290 JCSS	Kathy Castor	D	11
114 CCS	Dave Weldon	R	15
125 FS, DET 1	Kendrick Meek	D	17
125 FW			

Unit	Member	Party	District
GEORGIA			
SENATOR JOHNNY ISAKSON (R)			
SENATOR SAXBY CHAMBLISS (R)			
202 EIS	Jack Kingston	R	1
117 ACS			
224 JCSS			
116 ACW	Jim Marshall	D	8
530 BAND	Phil Gingrey	R	11
283 CBCS			
CRTC	John Barrow	D	12
165 AW			
GUAM			
DELEGATE MADELEINE Z. BORDALLO (D)			
254 ABG	Madeleine Z. Bordallo	D	--
254 RHS			
HAWAII			
SENATOR DANIEL K. INOUE (D)			
SENATOR DANIEL K. AKAKA (D)			
154 WG	Neil Abercrombie	D	1
201 CCG			
293 CBCS			
291 CBCS	Mazie K. Hirono	D	2
292 CBCS			
297 ATCS			
150 ACWS			
154 ACS			
169 ACWS			
199 WF			
IDAHO			
SENATOR JIM RISCH (R)			
SENATOR MICHAEL D. CRAPO (R)			
124 WG	Mike Simpson	R	2
190 FS			
124 ASOS			
189 AS			
266 RANS			

Unit	Member	Party	District
ILLINOIS			
SENATOR RICHARD J. DURBIN (D)			
SENATOR ROLAND BURRIS (D)			
566 BAND	Peter Roskam	R	6
126 ARW	Jerry Costello	D	12
169 ASOS	Aaron Schock	R	18
182 ASOC			
182 AW			
183 FW			
217 EIS			
264 CBCS			
INDIANA			
SENATOR RICHARD G. LUGAR (R)			
SENATOR EVAN BAYH (D)			
122 FW	Mark Souder	R	3
207 WF	Mike Pence	R	6
DET 1, HQ INANG			
113 FS	Andre Carson	D	7
181 FW			
DET 2, HQ INANG	Baron Hill	D	9
IOWA			
SENATOR CHARLES E. GRASSLEY (R)			
SENATOR TOM HARKIN (D)			
132 FW	Tom Latham	R	4
133 ACS			
185 FW	Steve King	R	5
KANSAS			
SENATOR SAM BROWNBACK (R)			
SENATOR PAT ROBERTS (R)			
127 WF	Jerry Jenkins	R	2
190 ARW			
134 ACS	Todd Tiahrt	R	4
184 ARW			
KENTUCKY			
SENATOR JIM BUNNING (R)			
SENATOR MITCH MCCONNELL (R)			
123 AW	John Yarmuth	D	3
205 CBCS			
123 STF			
165 WF			

Unit	Member	Party	District
LOUISIANA			
SENATOR DAVID VITTER (R)			
SENATOR MARY L. LANDRIEU (D)			
122 WF	Steve Scalisa	R	1
236 CBCS			
214 EIS	Anh Cao	R	2
159 FW	Charlie Melancon	D	3
122 ASOS	Rodney Alexander	D	5
259 ATCS			
MAINE			
SENATOR OLYMPIA J. SNOWE (R)			
SENATOR SUSAN M. COLLINS (R)			
243 EIS	Chellie Pingree	D	1
265 CBCS			
101 ARW	Michael Michaud	D	2
MARYLAND			
SENATOR BENJAMIN L. CARDIN (D)			
SENATOR BARBARA A. MIKULSKI (D)			
104 FS	Dutch Ruppersberger	D	2
135 AS			
175 WG			
104 WF	John Sarbanes	D	3
240 CEF			
MASSACHUSETTS			
SENATOR SCOTT BROWN (R)			
SENATOR JOHN F. KERRY (D)			
104 FW	John Olver	D	1
131 WF			
567 BAND	Richard E. Neal	D	2
212 EIS	James McGovern	D	3
102 FW	William Delahunt	D	10
202 WF			
253 CCG			
267 CCS			
MICHIGAN			
SENATOR DEBBIE A. STABENOW (D)			
SENATOR CARL LEVIN (D)			
CRTC	Bart Stupak	D	1
110 FW	Mark H. Schaver	R	7

Unit	Member	Party	District
MICHIGAN			
107 WF	Candice Miller	R	10
127 WG			
235 ATAS			
MINNESOTA			
SENATOR AMY KLOBUCHAR (D)			
VACANT			
133 AW	Keith Ellison	DFL	5
208 WF			
210 EIS			
148 FW	James Oberstar	DFL	8
MISSISSIPPI			
SENATOR THAD COCHRAN (R)			
SENATOR ROGER WICKER (R)			
172 AW	Gregg Harper	R	3
186 ARW			
238 ASOS			
209 CES	Gene Taylor	D	4
255 ACS			
CRTC			
MISSOURI			
SENATOR CHRISTOPHER "KIT" BOND (R)			
SENATOR CLAIRE MCCASKILL (D)			
110 WF	Todd Akin	R	2
131 FW			
231 CEF			
239 CBCS			
571 BAND			
121 ACS	Russ Carnahan	D	3
157 ACG			
218 EIS			
139 AW	Samuel B. Graves	D	6
241 ATCS			
MONTANA			
SENATOR MAX BAUCUS (D)			
SENATOR JON TESTER (D)			
120 FW	Dennis Rehberg	R	At Large
219 RHS			

Unit	Member	Party	District
NEBRASKA			
SENATOR BEN NELSON (D)			
SENATOR MIKE JOHANNIS (R)			
155 ARW	Jeff Fortenberry	R	1
NEVADA			
SENATOR JOHN ENSIGN (R)			
SENATOR HARRY REID (D)			
152 AW	Dean Heller	R	2
152 IS			
NEW HAMPSHIRE			
SENATOR JEANNE SHAHEEN (D)			
SENATOR JUDD GREGG (R)			
157 ARW	Carol Shea-Porter	D	1
260 ATAS			
NEW JERSEY			
SENATOR ROBERT MENENDEZ (D)			
SENATOR FRANK LAUTENBERG (D)			
177 FW	Frank LoBiondo	R	2
108 ARW	Christopher Smith	R	4
NEW MEXICO			
SENATOR TOM UDALL (D)			
SENATOR JEFF BINGAMAN (D)			
150 FW	Martin Heinrich	D	1
147 FS, DET 1	Harry Teague	D	2
NEW YORK			
SENATOR CHARLES E. SCHUMER (D)			
SENATOR KIRSTEN GILLIBRAND (D)			
106 RQW	Timothy Bishop	D	1
213 EIS	Gary L. Ackerman	D	5
274 ASOS			
109 AW	Paul D. Tonko	D	21
105 AW	Maurice D. Hinchey	D	22
NEADS	Michael Arcuri	D	24
152 ACG	Dan Maffel	R	25
174 FW			
107 ARW	Christopher Lee	R	26

Unit	Member	Party	District
NORTH CAROLINA			
SENATOR KAY HAGAN (D)			
SENATOR RICHARD BURR (R)			
118 ASOS	Larry Kessell	D	8
263 CBCS			
145 AW	Melvin L. Watt	D	12
156 WF			
245 CEF			
NORTH DAKOTA			
SENATOR KENT CONRAD (D)			
SENATOR BYRON L. DORGAN (D)			
119 FW	Earl Pomeroy	D	At Large
OHIO			
SENATOR GEORGE V. VOINOVICH (R)			
SENATOR SHERROD BROWN (D)			
164 WF	Steve L. Driehaus	D	1
123 ACS	Jean Schmidt	R	2
179 AW	Jim Jordan	R	4
200 RHS	Robert E. Latta	R	5
178 FW	Steve Austria	R	7
269 CBCS			
251 CCG			
180 FW	Marcy Kaptur	D	9
555 BAND			
121 ARW	Mary Jo Kilroy	D	15
220 EIS	Zach Space	D	18
OKLAHOMA			
SENATOR THOMAS COBURN (R)			
SENATOR JAMES M. INHOFE (R)			
125 WF	John Sullivan	R	1
138 FW			
219 EIS			
137 AW	Mary Fallin	R	5
OREGON			
SENATOR RON WYDEN (D)			
SENATOR JEFF MERKLEY (D)			
116 ACS OLAA	Grey Walden	R	2
173 FW			
270 ATCS			

Unit	Member	Party	District
OREGON			
116 ACS	Earl Blumenauer	D	3
123 WF			
142 FW			
244 CBCS			
272 CBCS			
PENNSYLVANIA			
SENATOR ARLEN SPECTER (R)			
SENATOR ROBERT P. CASEY (D)			
112 ACS	Glenn W. Thompson Jr.	R	5
193 SOW, DET 1	Christopher Carney	D	10
201 RHS			
203 WF			
211 EIS	Vacant	(-)	12
258 ATCS	Allyson Y. Schwartz	D	13
111 FW			
140 WF			
270 EIS	Tim Holden	D	17
193 SOW			
271 CBCS			
553 BAND	Tim Murphy	R	18
146 WF			
171 ARW			
PUERTO RICO			
RESIDENT PEDRO R. PIERLUISI (R)			
140 ADS	Luis G. Fortuno	R	--
141 ACS			
156 AW			
RHODE ISLAND			
SENATOR JACK REED (D)			
SENATOR SHELDON WHITEHOUSE (D)			
143 AW	James R. Langevin	D	2
281 CCG			
282 CBCS			
SOUTH CAROLINA			
SENATOR LINDSEY GRAHAM (R)			
SENATOR JAMES DEMINT (R)			
158 FS, DET 1	Henry E. Brown Jr.	R	1

Unit	Member	Party	District
SOUTH CAROLINA			
169 FW	James E. Clyburn	D	6
240 CBCS			
245 ATCS			
SOUTH DAKOTA			
SENATOR JOHN THUNE (R)			
SENATOR TIM JOHNSON (D)			
114 FW	Stephanie Herseth Sandlin	D	At Large
TENNESSEE			
SENATOR LAMAR ALEXANDER (R)			
SENATOR BOB CORKER (R)			
119 ACS	John J. Duncan Jr.	R	2
134 ARW			
ANG TEC			
228 CBCS			
572 BAND			
241 EIS	Zach Wamp	R	3
105 WF	Jim Cooper	D	5
118 AW			
164 AW	Marsha Blackburn	R	7
TEXAS			
SENATOR JOHN CORNYN (R)			
SENATOR KAY BAILEY HUTCHINSON (R)			
221 CBCS	Sam Johnson	R	3
254 CCG			
273 EIS	Al Green	D	9
209 WF	Michael T. McCaul	R	10
136 AW	Kay Granger	R	12
181 WF			
531 BAND			
149 FW	Charles A. Gonzalez	D	20
204 SPS	Ciro D. Rodriguez	D	23
111WF	Lloyd Doggett	D	25
147 FW			
272 EIS			
UTAH			
SENATOR ORRIN G. HATCH (R)			
SENATOR ROBERT F. BENNET (R)			
299 RCS	Rob Bishop	R	1
Unit			
Member			
Party			
District			

UTAH			
109 ACS	Jason Chaffetz	R	3
130 EIS			
151 ARW			
169 IS			
VERMONT			
SENATOR PATRICK J. LEAHY (D)			
SENATOR BERNARD SANDERS (I)			
158 FW	Peter Welch	D	1
VIRGIN ISLANDS			
DELEGATE DONNA CHRISTIAN-CHRISTENSEN (D)			
285 CBCS	Donna M. Christensen	D	--
VIRGINIA			
SENATOR JOHN WARNER (R)			
SENATOR JAMES WEB (D)			
200 WF	Glenn C. Nye	D	2
203 RHS			
192 FW	Robert C. Scott	D	3
NGB	James B. Moran	D	8
WASHINGTON			
SENATOR MARIA CANTWELL (D)			
SENATOR PATTY MURRAY (D)			
215 EIS	Jay Inslee	D	1
262 CBCS	Richard Ray Larsen	D	2
242 CBCS	Cathy McMorris Rodgers	R	5
560 BAND			
141 ARW			
143 CBCS	Jim McDermott	D	7
111 ASOC	Adam Smith	D	9
116 ASOS			
252 CCG			
256 CBCS			
248 CEF			
WADS			

Unit	Member	Party	District
WEST VIRGINIA			
SENATOR ROBERT C. BYRD (D)			
SENATOR JOHN D. "JAY" ROCKEFELLER IV (D)			
130 AW	Shelley Moore Capito	R	2
167 AW			
WISCONSIN			
SENATOR HERB KOHL (D)			
SENATOR RUSSELL D. FEINGOLD (D)			
115 FW	Tammy Baldwin	D	2
126 WF	Gwen Moore	D	4
128 ARW			
CRTC	Thomas E. Petri	R	6
128 ACS			
WYOMING			
SENATOR MICHAEL B. ENZI (R)			
SENATOR JOHN BARRASSO (R)			
153 AW	Cynthia M. Lummis	R	At Large
242 ATAS			
153 CACS			

Chapter 6:

Contacts

Source: NGB/CFX

Title	Phone Number	Office
Office of the Director, Air National Guard (NGB/CF)		
Director, ANG	703-614-8033 703-614-7891	4E 126 Pentagon
Deputy Director, ANG	703-607-2377	4E 126
Executive Officer to the Director	703-614-8033 703-614-7891	4E 126 Pentagon
Executive Officer to the Deputy Director	703-614-8033	4E 126
Executive Assistant to the Director	703-614-8033 703-614-7891	4E 126 Pentagon
Executive Assistant to the Deputy Director	703-695-9698 703-695-9698	4E 126
Fax, Director, ANG Pentagon	703-692-9056	--
Fax, NGB/CF	703-607-3678	--
Office of the Command Chief Master Sergeant (NGB/CFC)		
Command Chief Master Sergeant	703-607-2385	12207
Executive Assistant to the CCM	703-607-2414	12217
Special Assistant to the CCM	703-607-2412	12222
ANG First Sergeant Functional Manager	301-836-8435	AAFB
Executive Support ANGRC/CCPC)		
Conference Coordinator	703-607-3109	12215
Conference Support	703-607-3050	12224
Protocol (ANGRC/CCPP)		
Protocol NCOIC Events & Ceremonies	703-607-2381	2503
Protocol Logistics NCOIC	703-607-1807	2504
Protocol Superintendent	703-607-5434	2502

Title	Phone Number	Office
Director's Action Group (NGB/CFX)		
Chief	703-607-3492	12521
Executive Services	703-607-1824	12522
Directorate of Financial Management and Comptroller (NGB/FM)		
Director & Comptroller	703 607-0903	8501
Deputy	703 607-0908	8508
Chief, Financial Analysis Division (FMA)	703-607-2799	8502
Chief, Financial Services Division (FMF)	703-607-0847	8509
Office of Safety (NGB/SE)		
Director, NGB Safety (SE)	301-836-8435	JBA
Information Manager (SEA)	301-836-8474	JBA
Chief, Flight Safety (SEF)	301-836-8690	JBA
Flight Safety Officer (SEFC)	301-836-8540	JBA
FSNCO, Special Ops, Rescue (SEFE)	301-836-8670	JBA
Chief, Ground Safety (SEG)	301-836-8101	JBA
Superintendent, Ground Safety (SEGO)	301-836-8109	JBA
Ground Safety NCO (SEGD)	301-836-8158	JBA
Chief, Weapons Safety (SEW)	301-836-7627	JBA
Weapons Safety Manager (SEW)	301-836-8094	JBA
The Air Surgeon (NGB/SG)		
The Air Surgeon	301-836-8436	JBA
Deputy Air Surgeon	301-836-8562	JBA
Executive Assistant	301-836-8546	JBA
Chief Communication/Information	301-836-8558	JBA
Division Chief, Medical Support (SGA)	301-836-8564	JBA
Division Chief, Medical Plans & Programs (SGX)	301-836-8563	JBA
Division Chief, SGP	301-836-8551	JBA

Title	Phone Number	Office
Air Directorate Command Section (ANGRC/CC)		
Commander	301-836-8001 /02 /03	JBA
Vice Commander	301-836-8001 /02 /03	JBA
Supt ANGRC Command Section	301-836-8544	JBA
First Sergeants	301-836-7058 703-607-1023	JBA/JP1
Special Assistant to the Commander/ADCON	301-836-8634	JBA
Secretary to the Commander &	301-836-8001/02/03	JBA
Command Section Info Mgr		JBA
NCOIC ANGRC Safety/Supply Rep	301-836-7084	JBA
ANGRC Protocol Liaison	301-836-8313	JBA
Security Superintendent/Assistant	301-836-8604 301-836-7615	JBA
ANGRC Facilities Branch	301-836-8860/7848/7850	JBA
Superintendent of Multimedia, Audiovisual & Graphics	301-836-8918/8919/8922	JBA
Chief, Communications DIV	301-836-8880	JBA
Telecomm, Communications Branch Chief	301-836-7974	JBA
Networks, Communications Branch	301-836-7119	JBA
Info Management/Mail Room Branch	301-836-8319/8317	JBA
Human Resources (NGB/HR)		
Chief	301-836-8884	JBA
Deputy Chief	301-836-8884	JBA
Chief, Military Human Resources (OMH)	301-836-8645	JBA
Chief, Manpower (OMM)	301-836-8640	JBA

Title	Phone Number	Office
Manpower and Personnel Services (NGB /A1)		
Director, Manpower & Personnel & Services	703-607-5780	10702
Chief, A1 Executive Services	703-607- 1738	1070 4
NCOIC, A1 Executive Services	703-607- 5780	10627
Chief, Recruiting and Retention (A1R)	703-607-3203	10401
Chief, Force Management Division (A1P)	703-607-5936	10802
Chief, Airmen Development (A1F)	301-836-8372	10601
Chief, Manpower, Organization and Resources (A1M)	703-607-5783	4101
Chief, Services (A1S)	301-836-816 2	JBA
Chief, Plans and Integration (A1X)	703-607-1738	10801
Chief, Personnel Data Systems (A1Q)	210-565-2545	RAFB, TX
ISR, Space and Cyber (NGB/A2)		
Director, Intelligence	703-607-2891	4409
Superintendent	703-607-5271	4404
Information Management	703-607-0582	4410
Airborne ISR Division	703-607-8655	4416
Force Management & Readiness	703-607-3045	4414
Plans & Resources Division	703-607-3053	4408
Operations (NGB/A3)		
Director	703-607-3328	5601
Executive Officer	703-607-1818	5602
Deputy	703-607-5855	5507
Deputy	301-836-7122	JBA
Superintendent, Executive Services (NGB/A3E)	703-607-3586	5602
Chief, Airspace and Ranges (NGB/A3A)	703-607-2114	5204
Chief, Cyberspace Warfare (NGB/A3C)	703-607-0680	4200
Chief, Personnel Recovery/Special Missions (NGB/A3J)	703-607-2827	5318
Chief, Current Operations (NGB/A30)	703-607-2873	5513
Chief, Training (NGB/A3T)	703-607-2769	5546

Title	Phone Number	Office
Operations (NGB/A3)		
Chief, Expeditionary Plans & Operations Exercises (NGB/A3X)	301-836-7100	JBA
Chief, Command and Control (NGB/A3Y)	703-607-05413	5205
Chief, Action Group (Ready Team) (NGB/A3Z)	703-607-0051	9403
Logistics (NGB/A4)		
Director	301-836-8470	JBA
Deputy Director	301-836-8483	JBA
Chief, Aircraft Maintenance Division (A4M)	301-836-8499	JBA
Chief, Analysis and Evaluations (A4Q)	301-836-7826	JBA
Chief, Logistics Readiness Division (A4R)	301-836-8442	JBA
Chief, Resource Integration Division (A4P)	301-836-8573	JBA
Plans and Requirements (NGB/A5)		
Director	301-836-8575	JBA
Chief, Executive Services (NGB/A3E)	301-836-8335	JBA
Operational Requirements (A5R)	703-607-2914	5521
Chief, Combat Forces Requirements (A5RC)	703-607-2939	5511
Chief, Requirement Integration (A5I)	703-607-3512	5519
Mobility Forces Requirements (A5RM)	301-836-8589	JBA
Communications (NGB/A6)		
Director, CIO	703-607-5343	6612
Deputy Director	703-607-5383	6609
Chief, Executive Services Division (A6E)	703-607-5379	6610
Chief, Capabilities and Integration Division(A6C)	703-607-5307	6710
Chief, Operations Division (A6O)	703-607-2093	6631
Chief, Cyber Transformation Division (A6O)	703-607-5346	6606
Chief, Plans , Policy , Policy and Resources Division (A6X)	703-607-5400	6619
Chief, ANG NOSC	316-759-7904	McConnell AFB

Title	Phone Number	Office
Installations and Mission Support (NGB/A7)		
Director of Installations and Mission Support (NGB/A7)	301-836-8060	JBA
Chief, Engineering Division (A7CC)	301-836-8085	JBA
Chief, Programming Division (A7CP)	301-836-8183	JBA
Chief, Readiness Division (A7CX)	301-836-8036	JBA
Chief, Security Forces (A7S)	301-836-7803	JBA
Chief, Environmental Division (A7CV)	301-836-8065	JBA
Plans and Programs (NGB A8)		
Division Chief, Executive Services (A8P)	703-607-3514	4515
Division Chief, Analysis Division (A8Y)	703-607-3696	4531
Division Chief, Strategic Plans and Basing (A8X)	703-607-3058	4506
Recruiting and Retention (NGB/RS)		
Director	703-607-3202	10401
Deputy Direction	703-607- 3248	10416
Chief, Recruiting Operations	703-607- 2973	10411
Chief, Retention	703-607-5789	10412
Chief, Advertising and Marketing	703-607-5097	10413

Adjutants General Association of the United States

Source: AGAUS website: <http://www.agaus.org/>

Name	State	Position	Phone
AGAUS Officers			
Maj Gen Greg Wayt	OH	President	614-336-7070
Maj Gen Mike Dubie	VT	Vice-President, Air	802-338-3124
Maj Gen Bill Wofford	AK	Vice-President, Army	
Maj Gen Ed Wright	WY	Treasurer	307-772-5233
Maj Gen Joe Carter	MA	Secretary	
Maj Gen Frank Vavala	DE	Past President	302-326-7001
Operational Planning Committee			
MG Frank Vavala	DE	Chair	302-326-7001
MG Bennett C. Landreneau	LA	Force Structure Army	318-641-3858
Maj Gen William N. Reddell	NH	Force Structure Air	603-225-1200
MG William E. Ingram, Jr.	NC	Modernization Army	919-664-6101
Maj Gen Timothy Lowenberg	WA	Homeland Security	253-512-8201
Brig Gen Timothy E. Orr	IA	Infrastructure/Facilities/IT	515-252-4211
MG Allen E. Tackett	WV	Personnel	304-561-6316

Name	State	Phone
Force Structure Army Committee		
MG Bennett C. Landreneau, Chair	LA	318-641-3858
MG Larry W. Shellito	MN	651-282-4666
MG R. Martin Umbarger	IN	317-247-3559
MG Stanhope S. Spears (Ret)	SC	803-806-4217
MG Gary L. Saylor	ID	208-422-5242
MG Donald J. Goldhorn	GU	671-735-0400
Force Structure Air Committee		
Maj Gen Kenneth Clark, Chair	NH	603-225-1200
Maj Gen James A. Adkins, Vice Chair	MD	410-576-6097
MG Michael D. Dubie	VT	802-338-3124
Maj Gen Thaddeus J. Martin	CT	860-524-4953
Force Structure Air Committee		
MG John E. Walsh	MT	406-324-3010
MG Joseph C. Carter	MA	508-233-6552
Modernization Army Committee		
MG William E. Ingram, Jr. Chair	NC	919-664-6101
MG David A. Sprynczynatyk	ND	701-333-2001
MG Terry M. Haston	TN	615-313-3001
MG Patrick A. Murphy (Ret)	NY	518-786-4502
MG Glenn K. Reith	NJ	609-530-6957
Modernization Air Committee		
Maj Gen Douglas Burnett	FL	904-823-0101
Maj Gen Thomas G. Cutler	MI	517-481-8083
Maj Gen William L. Freeman, Jr	MS	601-313-6232
Maj Gen Robert B. Newman	VA	804-786-4400
Homeland Security		
Maj Gen Timothy J. Lowenberg	WA	253-512-8201
MG Raymond F. Rees	OR	503-584-3991
MG Brian L. Tarbet	UT	801-523-4401
MG John W. Libby (Ret)	ME	678-569-6001
Maj Gen Thomas H. Katkus	AK	907-428-6003
MG Jose S. Mayorga, Jr	TX	512-782-5006

Name	State	Phone
Infrastructure/ Facilities/ Information/ Technologies		
Maj Gen Edward W. Tonini	KY	502-607-1558
Brig Gen William R. Burks	NV	775-887-7302
Maj Gen Timothy E. Orr	IA	515-252-4211
Maj Gen Tod M. Bunting, Vice Chair	KS	785-274-1001
MG Abner C. Blalock, Jr.	AL	334-271-7200
MG Edward L. Wright	WY	307-772-5234
Brig Gen Mary J. Kight	CA	916-854-3500
Personnel		
MG Allen Tackett, Chair	WV	304-561-6316
MG Jessica L. Wright	PA	717-861-8500
MG Robert T. Bray	RI	401-275-4102
Maj Gen Errol R. Schwartz	DC	202-685-9798
MG William L. Enyart, Jr.	IL	217-761-3500
MG Stephen L. Danner	MO	573-638-9710
MG Robert G. F. Lee	HI	808-733-4246
BG Kenny C. Montoya	NM	505-474-1202

The National Guard Association of the United States

Source: NGAUS Website, <http://www.ngaus.org/>

Name	State	Contact Information
Officers Term Expires 2010		
Maj Gen Tod Bunting, Chairman	KS	Tod.bunting@us.army.mil
MG Jessica Wright, Vice Chair (Army)	PA	Jessica.lynn.wright@us.army.mil
COL Al Faber, Secretary	OH	Alfred.faber@us.army.mil
Brig Gen Kenneth L. Ross (Ret), Treasurer	LA	Kenross@sealeros.com
MG R. Martin Umbarger, Immediate Past Chairman		Marty.umbarger@us.army.mil
Maj Gen Cynthia Kirkland (Ret), Vice Chair (Air)	NV	kirklandnv@sbcglobal.net
Directors, Area I (CT, ME, MA, NH, NJ, NY, RI, VT) Expires 2010		
MG Michael Dubie, TAG	VT	michael.dubie@vt.ngb.army.mil
LTC Catherine M. Corkery	MI	catherine.corker@ma.ngb.army.mil
Capt Nicole Ivers	MA	nicole.ivers@maotis.ang.af.mil
Directors, Area II (DE, DC, KY, MD, NC, OH, PA, VA WV) Expires 2011		
MG Francis D. Vavala, TAG	DE	frank.vavala@de.ngb.army.mil
COL Deborah Ashenhurst	OH	deborah.ashenhurst@oh.ngb.army.mil
Brig Gen Hugh T. Broomall	DE	hugh.broomall@denewc.ang.af.mil
Directors, Area III (AL, FL, GA, PR, SC, TN, VI) Term Expires 2012		
MG Abner C. Blalock, TAG	AL	Abner.blalock@us.army.mil
LTC Jimmie Cole	TN	Jimmie.colejr@us.army.mil
Lt Col Murray Hansen	GA	murray.hansen@garobi.ang.af.mil
Directors, Area IV (AR, KS, LA, MS, MO, OK, TX) Term expires 2010		
MG William Wofford, TAG	AR	William.d.wofford@ar.ngb.army.mil
LTC John Altebaumer	OK	John.altebaumer@us.army.mil
Lt Col Tony DeJesus	KS	Anthony.dejesus@ang.af.mil

Name	State	Contact Information
------	-------	---------------------

Directors, Area V (IL, IN, IA, MI, MN, ND, NE, SD, WI) Term expires 2011		
MG Larry Shellito, TAG	MN	Larry.shellito@us.army.mil
MAJ Erick Leckel	WI	Eric.leckel@us.army.mil
Col Gunther H. Neumann	WI	Gunther.neumann@ang.af.mil
Directors, Area VI (AK, AZ, CA, CO, GU, HI, ID, MT, NV, NM, OR, UT, WA, WY) Term expires 2012		
BG John E. Walsh, TAG	MT	John.walsh1@us.army.mil
COL Raymond Jardine (Ret)	HI	jardiner001@hawaii.rr.com
Brig. Gen. Daniel B. O'Hollaren	OR	dan.ohollaren@orport.ang.af.mil
Retired and Separated Directors		
COL Don Deering (Ret) <i>Term expires 2011</i>	TN	don168@bellsouth.net
Col Raymond W. Magill (Ret) <i>Term expires 2010</i>	MA	rmaqill2@juno.com
Company Grade Directors		
CPT Charlie Brown <i>Term expires 2010</i>	PA	Charlie.r.brown@us.army.mil
Capt. John Brownell <i>Term expires 2011</i>	NV	John.brownell@sbcglobal.net
Warrant Officer Director		
CW5 Gene Touchstone <i>Term expires 2012</i>	MI	gene.tocuhstone@us.army.mil

State Adjutants Generals

Name	State	Phone	DSN Phone
BG Thomas H. Katkus	AK	907-428-6007	317-384-4007
MG Abner C. Blalock Jr.	AL	334-271-7200	363-7200
Maj Gen William D. Wofford	AR	501-212-5001	962-5001
MG Hugo E. Salazar	AZ	602-267-2710	853-2710
Brig Gen Mary J. Kight	CA	916-854-3500	466-3500
Maj Gen H. Michael Edwards	CO	720-250-1500	250-1500
Maj Gen Thaddeus J. Martin	CT	860 524 4953	636-7953
MG Errol R. Schwartz.	DC	202-685-9798	325-9798
MG Francis D. Vavala	DE	302-326-7001	440-7001
Maj Gen Douglas Burnett	FL	904-823-0101	822-0101
MG William T. Nesbitt	GA	678-569-6001	338-6001
MG Donald J. Goldhorn	GU	671-735-0406	--
MG Robert G. F. Lee	HI	808-733-4246	-
BG Timothy E. Orr	IA	515-252-4211	431-4211
Maj Gen Gary L. Saylor	ID	208-422-5242	422-5242
MG William L. Enyart Jr.	IL	217-761-3500	555-3500
MG R. Martin Umbarger	IN	317-247-3559	369-2559
Maj Gen Tod M. Bunting	KS	785-274-1001	720-8001
Maj Gen Edward W. Tonini	KY	502-607-1558	667-1558
MG Bennett C. Landreneau	LA	318-641-3585	435-5600
MG Joseph C. Carter	MA	508-233-6552	256-6552
BG James A. Adkins	MD	410-576-6097	496-6097
MG John W. Libby	ME	207-626-4271	626-4205
Maj Gen Thomas G. Cutler	MI	517-481-8083	623-8083
MG Larry W. Shellito	MN	651-268-8924	825-8924
BG Stephen L. Danner	MO	573-638-9710	555-9710
MG William L. Freeman Jr.	MS	601-313-6232	293-6232
BG John E. Walsh	MT	406-324-3010	324-3010
MG William E. Ingram, Jr.	NC	919-664-6101	582-9101
Maj Gen David Sprynczynatyk	ND	701-333-2001	373-2001
BG Judd H. Lyons	NE	402-309-7099	279-7099

Name	State	Phone	DSN Phone
Maj Gen William N. Reddel III	NH	603-225-1200	684-9200
MG Glen K. Rieth	NJ	609-530-6957	445-9957
BG Kenny C. Montoya	NM	505-474-1210	867-8210
Brig Gen William R. Burks	NV	775-887-7302	530-7302
MG Patrick A. Murphy	NY	518-786-4502	489-4502
MG Gregory L. Wayt	OH	614-336-7070	346-7070
MG Myles L. Deering	OK	405-228-5201	628-5201
MG Raymond F. Rees	OR	503-584-3991	355-3991
MG Jessica L. Wright	PA	717-861-8500	491-8500
MG Antonio J. Vicens-Gonzalez	PR	787-289-1631	--
MG Robert T. Bray	RI	401-275-4102	247-4102
MG (Ret.) Stanhope S. Spears	SC	803-806-4217	583-4217
Maj Gen Steven R. Doohen	SD	605-737-6702	747-8702
MG Terry M. Haston	TN	615-313-3001	683-3001
MG Jose S. Mayorga Jr.	TX	512-782-5006	954-5006
MG Brian L. Tarbet	UT	801-523-4402	766-4402
Maj Gen Robert B. Newman, Jr.	VA	804-371-2526	-
MG Renaldo Rivera	VI	340-712-7710	727-7710
MG Michael D. Dubie	VT	802-338-3124	636-3124
Maj Gen Timothy J. Lowenberg	WA	253-512-8201	323-8201
Brig Gen Donald P. Dunbar	WI	608-242-3003	724-3003
MG Allen E. Tackett	WV	304-561-6316	623-6316
MG Edward L. Wright	WY	307-772-5234	388-5234

DSN Phone Translations		
	Commercial	DSN
Pentagon	(703) 614-XXXX	224-XXXX
	(703) 692-XXXX	225-XXXX
	(793) 695-XXXX	
Jefferson Plaza 1	(703) 607-XXXX	327-XXXX
	(703) 601-XXXX	329-XXXX
Joint Base Andrews	(301) 836-XXXX	278-XXXX
Mailing Addresses		
Jefferson Plaza 1	Jefferson Plaza 1 1411 Jefferson Davis Highway Arlington, VA 22202-3231	
Air National Guard Readiness Center	Air National Guard Readiness Center 3500 Fetchet Avenue Joint Base Andrews, MD 20762-5157	

Chapter 7:

Terms & Acronyms

Source: NGB/CFX

Acronym	Term
AAA	Anti-Aircraft Artillery
AATC	Air National Guard/Air Force Reserve Component Test Center
ACC	Air Combat Command
ACS	Agile Combat Support
AD	Active Duty
ADFAC	Air Director's Field Advisory Council
AEF	Air and Space Expeditionary Force
AFA	Air Force Association
AFCHQ	Air Force Component Headquarters
AFI	Air Force Instruction
AFPD	Air Force Policy Document
AFRC	Air Force Reserve Command
AFSC	Air Force Specialty Code
AFSLMO	Air Force Senior Leader Management Office
AFSO	Air Force Smart Operations
AGAUS	Adjutants General Association of the United States
AGE	Aerospace Ground Equipment
AGR	Active Guard Reserve
Air AG	Air Adjutant General
ALCT	Airlift Control Team
AMC	Air Mobility Command
AMD	Air Mobility Division
AMOG	Air Mobility Operations Group
AMS	Academy of Military Science
AMU	Aircraft Maintenance Unit
ANG	Air National Guard
AO	Action Officer
AoA	Analysis of Alternatives
AOC	Air and Space Operations Center
AOR	Area of Responsibility
ARC	Air Reserve Component
ARM	Aviation Resource Management

Acronym	Term
ART	Air Reserve Technician
ATCS	Air Traffic Control Squadron
ATO	Air Tasking Order
BAI	Backup Aircraft Inventory
BBP	Bullet Background Paper
BEAR	Base Expeditionary Airfield Resources
BFT	Blue Force Tracking
BG-N	Beyond Goldwater-Nichols
BLOS	Beyond Line of Sight
BOS	Base of Support
BRAC	Base Realignment and Closure
C2	Command and Control
C4ISR	Command, Control, Communications, Computers & Intelligence, Surveillance, Reconnaissance
CAOC	Combined Air and Space Operations Center
CAS	Close-Air-Support
CBA	Capabilities Based Analysis
CBCS	Combat Communications Squadron
CBO	Congressional Budget Office
CBRNE	Chemical, Biological, Radiological, Nuclear, or High Yield Explosive
CEMS	Comprehensive Engine Management System
CENTCOM	Central Command
CERFP	CBRNE Enhanced Response Force Package
CFACC	Combined Forces Air Component Commander
CIRF	Centralized Intermediate Repair Facility
CJCS	Chairman, Joint Chiefs of Staff
CMDB	Consolidated Manpower Database
CMS	Component Maintenance Squadron
COCOM	Combatant Commander
COMAFFOR	Commander Air Force Forces
CONOPS	Concept of Operations
CONUS	Continental United States
COOP	Continuity of operations
CRAF	Civil Reserve Air Fleet
CRG	Contingency Response Group
CRRA	Capability Review and Risk Assessment
CSAF	Chief of Staff Air Force
CSAR	Combat Search and Rescue
CWO	Combat Wing Organization

Acronym	Term
DAB	Defense Acquisition Board
DHS	Department of Homeland Security
DIRLAUTH	Direct Liaison Authorized
DIRMOBFOR	Director of Mobility Forces
DOC	Designed Operating Capability
DoD	Department of Defense
DRU	Direct Reporting Unit
DSB	Defense Science Board
EANGUS	Enlisted Association of the National Guard of the United States
ECS	Expeditionary Combat Support
ECSW	Expeditionary Combat Support Wing
EFAC	Enlisted Field Advisory Council
EIS	Engineering Installation Squadron
EMAC	Emergency Management Assistance Compact
EMEDS	Expeditionary Medical Support
EMS	Equipment Maintenance Support
ESGR	Employer Support to Guard and Reserve
ESSO	Executive Staff Support Officer
FAM	Functional Area Manager
FEMA	Federal Emergency Management Agency
FOL	Forward Operating Location
FSL	Forward Support Location
FTF	Future Total Force
FTU	Flying Training Unit
FY	Fiscal Year
FYDP	Future Years Defense Program
GAO	Government Accountability Office
GCS	Ground Control Station
GOMO	General Officer Management Office
GOSC	General Officers' Steering Committee
GSU	Geographically Separated Unit
HAF	Headquarters Air Force
HASC	House Armed Services Committee
HLD	Homeland Defense
HLS	Homeland Security
HMMWV	High Mobility Multipurpose Wheeled Vehicle (Humvee)
IAW	In Accordance With
ILM	Intermediate Level Maintenance
IMA	Individual Manpower Augmentee
IOC	Initial Operational Capability

Acronym	Term
IPL	Integrated Priority List
IPP	Integrated Planning Process
IPT	Integrated Process Team
IRR	Individual Ready Reserve
ISR	Intelligence, Surveillance, and Reconnaissance
JAOC	Joint Air and Space Operations Center
JB	Joint Base
JDAM	Joint Direct Attack Munition
JEIM	Jet Engine Intermediate Maintenance
JFACC	Joint Forces Air Component Commander
JFHQ-State	Joint Force Headquarters – State
JOA	Joint Operations Area
JOC	Joint Operations Center
JSTARS	Joint Surveillance Target Attack Radar System
JTAME	Joint Tactical Air Mobility Element
JTF	Joint Task Force
KPP	Key Performance Parameters
LANTIRN	Low Altitude Navigation and Targeting Infrared for Night
LGB	Laser Guided Bomb
LL	Legislative Liaison
LOS	Line of Sight
LRE	Launch and Recovery Element
LRU	Line Replaceable Unit
MAJCOM	Major Command
MCS	Mobility Capabilities Study
MDS	Mission Design Series
MilCon	Military Construction
MOA	Memorandum of Agreement
MOS	Maintenance Operations Squadron
MOU	Memorandum of Understanding
MRT	Maintenance Recovery Team
MSCA	Military Support to Civilian Authorities
MSO	Military Service Obligation
MWS	Missile Warning System
MXG	Maintenance Group
MXS	Maintenance Squadron
NAF	Numbered Air Force
NATO	North Atlantic Treaty Organization
NCO	Noncommissioned Officer
NEAS	New Expectations of ARC Service

Acronym	Term
NGAUS	National Guard Association of the United States
NGB	National Guard Bureau
NGB/CF	Office of the Director, ANG
NGREA	National Guard and Reserve Equipment Account
NMS	National Military Strategy
NORTHCOM	United States Northern Command
NSS	National Security Strategy
O & M	Operations and Maintenance
OASD(RA)	Office of the Assistant Secretary of Defense for Reserve Affairs
OCONUS	Outside the Continental United States
OCR	Operational Change Report
OEF	Operation ENDURING FREEDOM
OG	Operations Group
OIF	Operation IRAQI FREEDOM
ONE	Operation NOBLE EAGLE
OPCON	Operational Control
OPLAN	Operation Plan
OPR	Office of Primary Responsibility
OPTEMPO	Operations Tempo
ORI	Operational Readiness Inspection
OSA	Operational Support Airlift
OSD	Office of the Secretary of Defense
PA	Public Affairs
PA&E	Programs Assessment and Evaluation
PAA	Primary Aircraft Authorized
PACAF	Pacific Air Forces
PAF	Project Air Force
PBD	Program Budget Decision
PCR	Program Change Request
PCS	Permanent Change of Station
PDM	Program Decision Memorandum
PEM	Program Element Manager
PME	Professional Military Education
POM	Program Objective Memorandum
PPBES	Planning, Programming, Budgeting, and Execution System
PSRC	Presidential Select Reserve Call-up
QDR	Quadrennial Defense Review
R & D	Research and Development
RC	Reserve Component

Acronym	Term
RED HORSE	Rapid Engineer Deployable Heavy Operational Repair Squadron, Engineer
RFI	Request for Information
RFP	Request for Proposals
ROTC	Reserve Officers Training Corps
RQS	Rescue Squadron
RSOI	Reception, Staging, Onward Movement, and Integration
RUTA	Rescheduled Unit Training Assembly
RWR	Radar Warning Receiver
SAD	State Active Duty
SADL	Situation Awareness Data Link
SAFIRE	Surface to Air Fire
SAM	Surface-to-Air-Missile
SAR	Synthetic Aperture Radar
SASC	Senate Armed Service Committee
SATAF	Site Activation Task Force
SCIG	Strategic Communication Integration Group
SE	Office of Safety, ANG
SECAF	Secretary of the Air Force
SF	Security Forces
SG	Surgeon General
SLC	Senior Leadership Conference
SOFA	Status of Forces Agreement
SUTA	Split Unit Training Assembly
TACC	Tanker Airlift Control Center
TACP	Tactical Air Control Party
TAG	The Adjutant General
TAI	Total Active Inventory
TARS	Tactical / Theater Airborne Reconnaissance System
TCTO	Time Compliance Technical Order
TEC	Training and Education Center
TFI	Total Force Integration
TRS	TRICARE Reserve Select
TST	Time Sensitive Target
UAS	Unmanned Aerial System
UAV	Unmanned Aerial Vehicle
UCI	Unit Compliance Inspection
UCMJ	Uniform Code of Military Justice
UMD	Unit Manning Document

Acronym	Term
UPL	Unfunded Priority List
USAFE	United States Air Forces, Europe
USAFR	United States Air Force Reserve
USD (P&R)	Under Secretary of Defense for Personnel and Readiness
USNORTHCOM	United States Northern Command
USTRANSCOM	US Transportation Command
UTA	Unit Training Assembly
UTC	Unit Type Code
WFHQ	Warfighting Headquarters
WMD-CST	Weapons of Mass Destruction – Civil Support Team

The ANG Resource Book is available online at:
www.ang.af.mil

