

CAUTION BOATERS!

move slowly ...
lives depend on it.

It is illegal to approach and remain within 500 yards (460 m) of a right whale.

Right whales are protected by federal regulations. It is illegal to approach a right whale within 500 yards (50 CFR 224.103 (c)). Any vessel finding itself within the 500 yards away from a right whale must depart immediately at a safe, slow speed.

Steer clear of whales!

U.S. east coast waters are vital habitat for right whale feeding, calving and migrating
Use caution in the Southeast U.S. calving area November 15- April 15.



THIS RIGHT WHALE WAS UNABLE TO AVOID THE VESSEL THAT STRUCK HER

Did you know:

- Vessel collisions are one of the most significant threats to endangered whales.
- Vessels as small as 43 feet are capable of killing juvenile and adult right whales; vessels as small as 33 feet are capable of killing calves.
- Right whales are difficult to see because they are dark in color, have no dorsal fin, move slowly and hover just below the surface.
- Right whales may not move away from your path.
- Preventing right whale collisions also helps prevent expensive damage to your vessel.

ATTENTION: All vessels greater than or equal to 65 ft (19.8 m) in overall length and subject to the jurisdiction of the United States and all vessels greater than or equal to 65 ft in overall length entering or departing a port or place subject to the jurisdiction of the United States must slow to speeds of 10 knots or less in Seasonal Management Areas.

For more information, visit: <http://www.nmfs.noaa.gov/pr/shipstrike>

**Report sightings of dead, injured, or entangled whales:
1-877-942-5343 or to the USCG via Channel 16**

ALERT to right whales and move away!

AVOID right whales to prevent collisions!

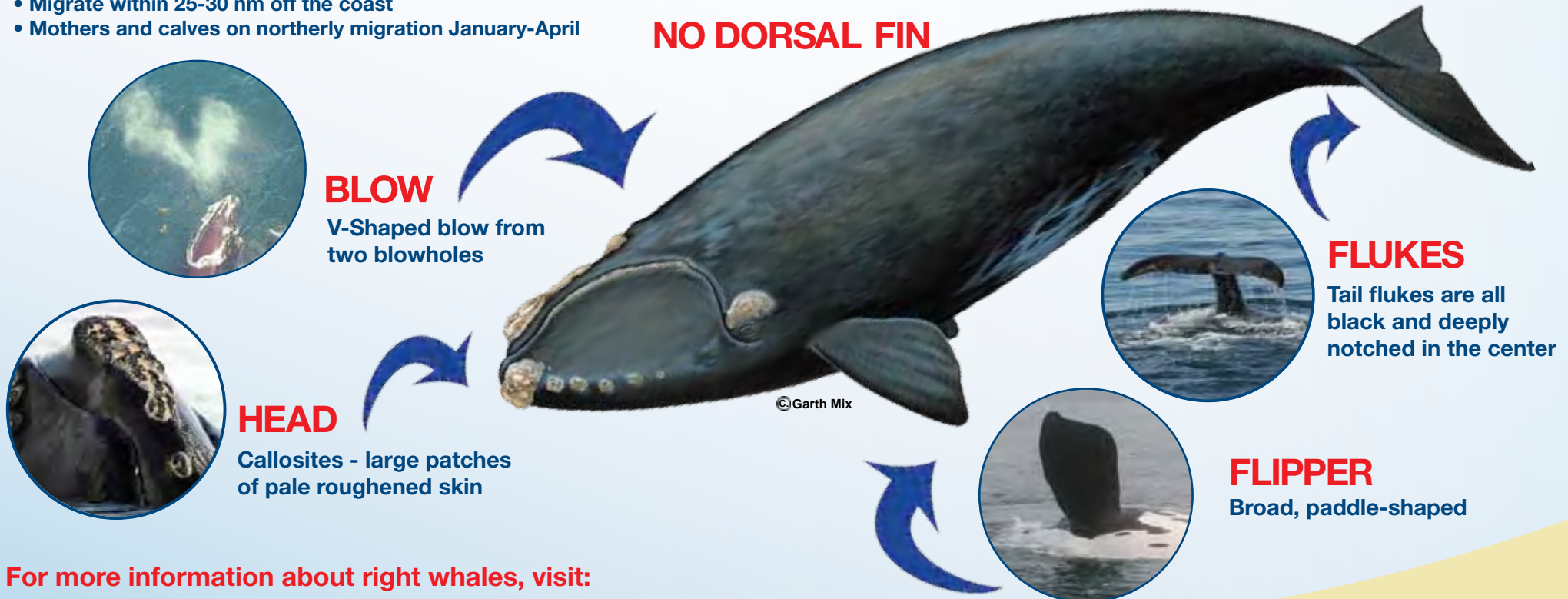
BEHAVIOR

- Slow swimming, surface dwelling
- May not move away from boaters path
- Southerly migration along the east coast during fall months
- Migrate within 25-30 nm off the coast
- Mothers and calves on northerly migration January-April

NORTH ATLANTIC RIGHT WHALE FACTS

- As few as ~360 remain in the North Atlantic Ocean
- Vessel collisions account for approx. 34% of all human caused mortalities
- Listed under the U.S. Endangered Species Act
- Protected under the U.S. Mammal Protection Act
- Approximate size : 44-50 feet long; can weigh up to 80 tons; females are slightly larger than males; right whale calves are 13-15 feet in length at birth

You can help with the recovery of this species by allowing right whales to swim, feed, and socialize free of vessel disturbance!



For more information about right whales, visit:
<http://rightwhalesouth.nmfs.noaa.gov>