

Welcome

Buenos Aires National Wildlife Refuge is one of nearly 550 refuges managed by the U.S. Fish & Wildlife Service. Primary objectives of this Refuge are to establish a breeding population of endangered masked bobwhite quail, preserve the natural diversity of wildlife native to southeast Arizona, and provide for wildlife-oriented recreation and education.

Weapons

Persons possessing, transporting, or carrying firearms on National Wildlife Refuges must comply with all provisions of state and local law. Persons may only use (discharge) firearms in accordance with refuge regulations (50 CFR 27.42 and specific refuge regulations in 50 CFR Part 32).

Any discharge of a firearm except to take legal game is not permitted.

The use or possession of crossbows, bows and arrows, air guns, spears, gigs or other weapons is prohibited except as may be authorized under approved hunting regulations.

Mechanized Vehicles

Mechanized vehicles (including bicycles) may only be operated on designated public roadways. Roads are designated on published Refuge maps. All travel off these designated roads is prohibited. Seasonal road closures may occur.

All motor vehicles, including ATVs and motorcycles, must be licensed, insured and equipped to legally operate on state highways. ATVs and motorcycles registered in Arizona must have valid Arizona motorcycle (MC) plates. Some states do not provide for this type of registration (e.g. California). ATVs and motorcycles registered in these states must be registered and insured at least temporarily in Arizona to be used on the Refuge.

Motor vehicle operators must possess a valid driver's license and insurance. The speed limit on Refuge roads is 25 mph unless posted otherwise. Drivers should be prepared for emergencies and changing conditions. Always carry shovels, spare tires, first aid kits and emergency food and water.

Horses [per 50 CFR 25.31(d)]

Horseback riders are restricted to Refuge roads. Groups using four or more horses must possess and carry a Refuge permit. Groups using horses must provide their own water and weed-free feed and clean the campsite of horse manure.

Natural Items and Artifacts

Introducing or attempting to introduce, disturb, injure, spear, poison, destroy, or collect any plants or animals or the destruction, injury, defacement, disturbance or unauthorized removal of any public property, including natural objects or private property on or from any National Wildlife Refuge is prohibited.

Searching for, removing or defacing any object of antiquity (e.g. arrowheads, potshards) or other valuable objects, including minerals, rocks and stones, is prohibited.

Miscellaneous Regulations under the NWRSA

The use of flagging tape, reflective tape, or other signs or markers is prohibited.

Leaving property abandoned on a National Wildlife Refuge is prohibited, including camping equipment, boats, trailers and water jugs.

Pets must be under the control of the owner at all times. Unconfined domestic animals are not allowed. Fishing is prohibited.

Disturbing the peace or other disorderly conduct on the Refuge is prohibited.

All accidents involving injury to people or wildlife and/or property damage must be reported to an on-duty Refuge official within 24 hours of the accident. Persons under the age of 21 years may not possess or consume alcoholic beverages on the Refuge. Providing alcoholic beverages to persons under age 21 is also prohibited.

Possession of drug paraphernalia, including any instrument that facilitates the consumption of a controlled substance, is prohibited.

See the Buenos Aires NWR hunt brochure for hunting information.

Refuge Regulations and authorized activities can be found under the National Wildlife Refuge System Administration Act (NWRSA), Subchapter C, 50 CFR 25 through 38. Unauthorized activities are prohibited.

Buenos Aires

National Wildlife Refuge

Public Use Regulations

Buenos Aires National Wildlife Refuge

P.O. Box 109

Sasabe, Arizona 85633

520/823-4251

<http://www.fws.gov/southwest/refuges/arizona/buenosaires/>

Department of Interior
U.S. Fish & Wildlife Service
1 800/344 WILD
March 2010



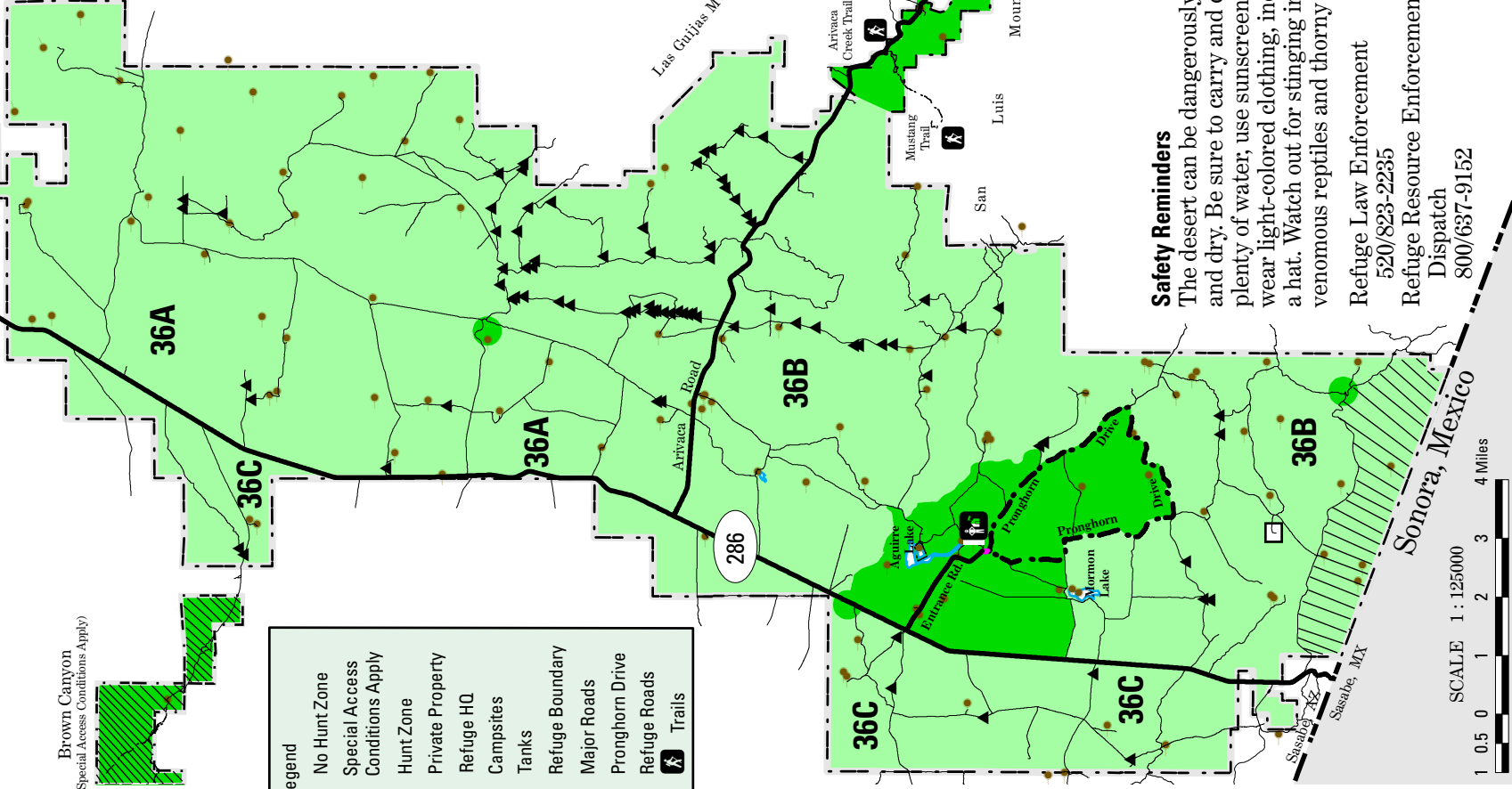
Buenos Aires National Wildlife Refuge

To
Tucson

286

Brown Canyon
(Special Access Conditions Apply)

Legend	
	No Hunt Zone
	Special Access Conditions Apply
	Hunt Zone
	Private Property
	Refuge HQ
	Campsites
	Tanks
	Refuge Boundary
	Major Roads
	Pronghorn Drive
	Refuge Roads
	Trails



Safety Reminders

The desert can be dangerously hot and dry. Be sure to carry and drink plenty of water; use sunscreen and wear light-colored clothing, including a hat. Watch out for stinging insects, venomous reptiles and thorny plants.

Refuge Law Enforcement

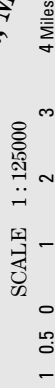
520/823-2235

Refuge Resource Enforcement

Dispatch

800/637-9152

Sonora, Mexico



Camping

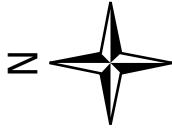
All campsites are primitive. Camping is permitted only at numbered sites, designated by the above symbol. Stays on the Refuge are limited to 14 days within a 30-day period.

Fires are permitted only in fire rings at the numbered campsites. Campfires may be prohibited when fire danger exists. Use only wood that is dead and down. You may collect firewood for Refuge campfires only. Campfires must be attended at all times. Fuel burning stoves (e.g. propane) may be used when campfire restrictions are in place.

All human waste must be buried immediately.

Remove all trash --- do not bury it.

To
19



Montana Unit
(Closest to all public entry)

Arizona Game and Fish Department
800/352-0700

US Border Patrol

877/872-7435

Pima County Sheriff

520/741-4900

Arizona Relay Service for the Deaf

800/367-8939

Emergencies

Dial 911