

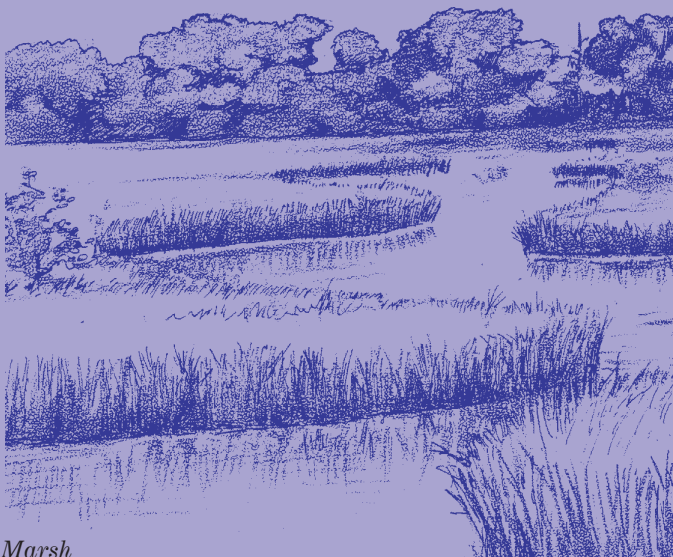
U.S. Fish & Wildlife Service

# Bayou Sauvage

*National Wildlife Refuge  
Bike Pathway*



*The Bayou Sauvage Bikeway is the newest way to experience the beautiful marsh habitat of Bayou Sauvage National Wildlife Refuge. Only 30 minutes from downtown New Orleans, the bike trail is one more opportunity for you, your family and friends to learn more about the U.S.'s largest urban wildlife refuge.*



*Marsh*

### **What Is It?**

This paved bicycle path takes advantage of the great views from the height of the New Orleans hurricane protection levee.

Currently, it begins near the junction of I-10 and U.S. 11, parallels the edge of Lake Pontchartrain, then crosses the marsh to the “closed exit” on I-10. During 1999, the “closed exit” will be opened for recreational users of Bayou Sauvage NW, and bikeway access will be available here also. The round trip on the bikeway is approximately 9 miles. The pathway is suitable for all types on non-motorized bikes. Additional access to the refuge along other, unpaved, levee tops is possible also - riders will want to use mountain bikes on these.

### **Bike Pathway Rules**

Motorized vehicles prohibited.

Riders must remain on the bikeway at all times.

Keep to the right. Yield to pedestrians and wildlife.

Wear protective gear: bike helmets are highly recommended; you may also want sunscreen, insect repellent, and drinking water.

Remember - take only memories and photos, leave only footprints.” Or in this case, tire tracks. Collection of plant or animal material is not allowed. Carry out all trash.

### **A Bike Path Through the Marsh?**

Most of the bike path route is atop the levee along Lake Pontchartrain. Hurricane protection levees surround over half of the marsh and swamp land that make up Bayou Sauvage Wildlife Refuge. The levees were originally built to hold back storm surges and maintain water levees for the city of New Orleans.

Now we use them to artificially maintain the marsh habitat for the benefit of wildlife - habitat that is quickly disappearing elsewhere due to urban development. The goal of the U.S. Fish and Wildlife Service is to manage Bayou Sauvage in as natural a state as possible.

Much of Bayou Sauvage refuge is relatively inaccessible by land. The bike pathway provides greater opportunities for the public to experience and learn about the refuge. Construction on the bike path began in the fall of 1997, and the project was completed by the beginning of 1998. The bikeway was funded with federal ISTEA monies, a program established to foster alternative modes of transportation. A bikeway extension is planned for the near future.

### **What Will You See?**

The pathway exposes you to the edge habitats of both the protected marsh and Lake Pontchartrain. Egrets, herons, gulls, terns, and pelicans are only some of the wide variety of birds that utilize the area's resources. The fresh and brackish marsh lands attract thousands of migrating birds. Many songbirds and wading birds pass through between May and July, while the fall brings huge flocks of ducks to their wintering grounds on the refuge. The keen observer might also spot alligators, turtles, snakes or nutria - so watch carefully!

### **Please Consider Our Refuge...**

Remember, when you visit any part of the refuge, you are a guest in someone else's home. Please don't litter, and take home only memories.

All of the animals and plants are protected and some plants and animals are poisonous, so be a cautious observer.

Keep noise levels at a minimum. If you want to see animals, keeping quite is the best way.

Visitors are welcome to enjoy fishing, hiking, and wildlife observation. However, hunting is not permitted.



*American Wigeon*  
USFWS



*This Blue Goose,  
Designed by  
Ding Darling,  
has become a  
symbol of the  
National  
Wildlife Refuge  
System.*

## *Where Is It?*

### **From Slidell**

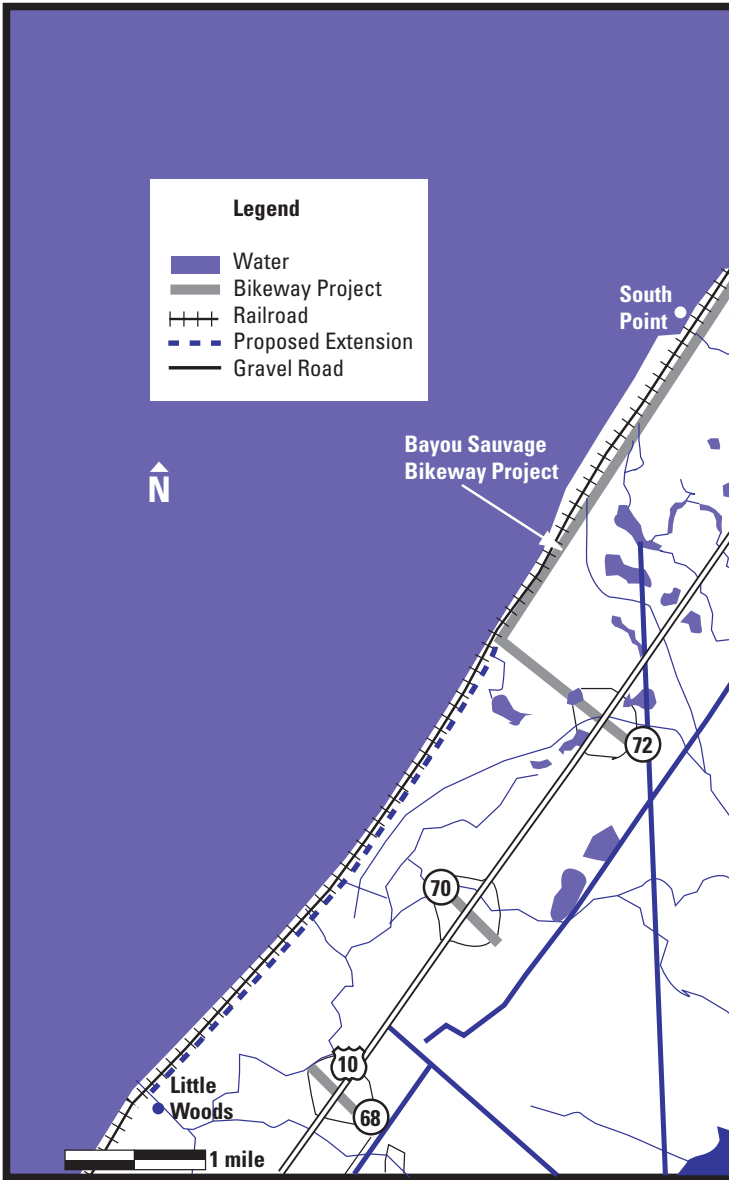
Take I-10 west across Lake Pontchartrain. At the Irish Bayou Exit, turn right and then take an immediate left before the US-11 bridge onto a gravel road. The bike pathway gate is about 1 mile ahead.

### **From New Orleans**

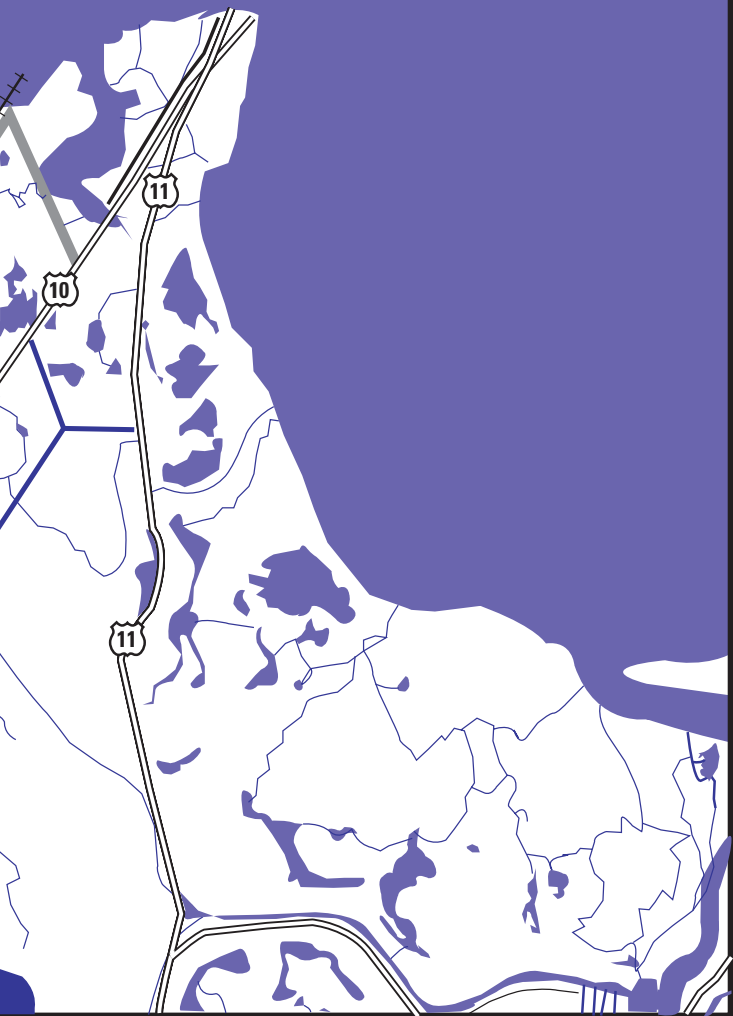
Take I-10 east, exiting at Irish Bayou - the last exit before crossing Lake Pontchartrain. Turn left and cross over I-10, then turn left again onto the gravel road before the US-11 bridge. The bike pathway gate is about 1 mile ahead.

### **For More Information Contact**

Southeast Louisiana Refuges  
Environmental Education Department  
1010 Gause Blvd, Building 936  
Slidell, Louisiana 70458  
504/646-7544



*Pintail*



**U.S. Fish and  
Wildlife Service  
Mission Statement**

The Mission of the U.S. Fish and Wildlife Service is working with others to conserve, protect, and enhance fish and wildlife and their habitats for the continuing benefit of the American people.

**Southeast Louisiana Refuges**  
**1010 Gause Blvd., Building 936**  
**Slidell, Louisiana 70458**  
**504/646 7549**  
**<http://www.fws.gov/~r4eao>**

**U.S. Fish & Wildlife Service**  
**1 800/344 WILD**

**September 1998**

