



*U.S. Army Space and Missile Defense Command/  
Army Forces Strategic Command*



# **USASMDC/ARSTRAT**

# **Command Overview**

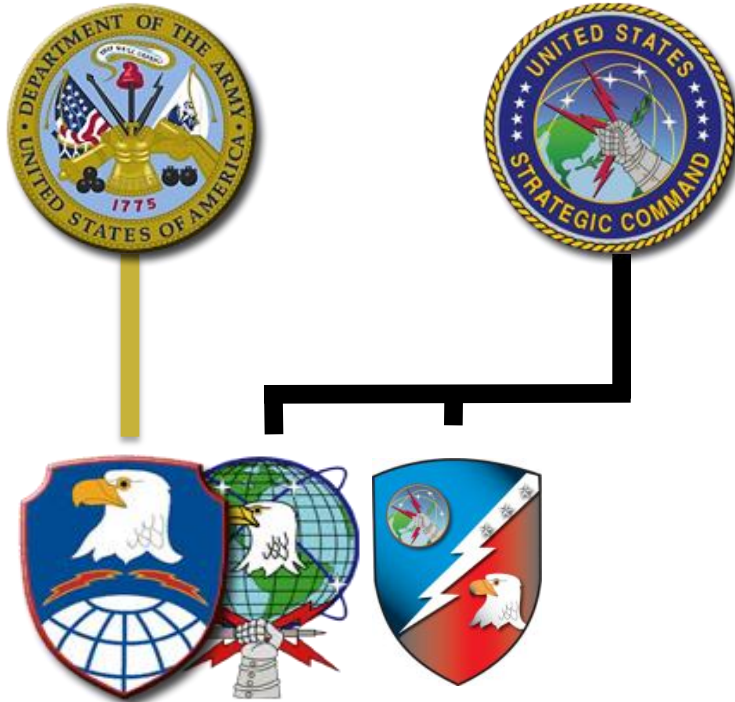
## **for the Greater Colorado Springs**

## **Chamber of Commerce**

**LTG Richard P. Formica**  
**18 October 2011**



# Our Reporting Chain



**USASMDC / ARSTRAT**

**JFCC-IMD**

## **“Three Hats”**

## Our Mission

USASMDC/ARSTRAT conducts space and missile defense operations and provides planning, integration, control and coordination of Army forces and capabilities in support of U.S. Strategic Command missions; serves as the Army force modernization proponent for space, high altitude and global missile defense; serves as the Army operational integrator for global missile defense; and conducts mission-related research and development in support of Army Title 10 responsibilities.

Assigned as Commanding General Joint Functional Component Command for Integrated Missile Defense



# USASMDC/ARSTRAT Vision

- USASMDC/ARSTRAT – a diverse, complex, and global command that provides critical capabilities to our Army, USSTRATCOM, COCOMs/ASCCs; in synch with JFCC-IMD
- One command...split based... multi-component...diverse constituencies...dispersed locations...talented work force of Soldiers, Civilians, contractors; public servants
- The Army's force modernization proponent for Space, High Altitude, and Global Missile Defense; the Army's operational integrator for Global Missile Defense:
  - Providing trained and ready space and missile defense forces and capabilities to the COCOMs and to the Warfighter (today)
  - Building future Space and Missile Defense forces (tomorrow)
  - Researching, testing, and integrating Space, Missile Defense, cyber, directed energy, & related technologies (day-after-tomorrow)
- Close, collaborative relationships with MDA and a multitude of stakeholders
- Nested within the Army's enterprise; engaged with and embedded in the HQDA DAMO-AMD
- Provide staff support to ARCYBER until FOC; retain close organizational linkages
- Disciplined stewards of our nation's resources – accountable, cost culture
- Precise, confident, fit, disciplined, courageous Soldiers and Civilians; tough, caring, courageous leaders. Committed to safety in all that we do
- A responsible and cooperative tenant at Redstone Arsenal, Peterson AFB, and on the installations on which we live and serve
- A values based command – caring for and serving Soldiers, Civilians, Families

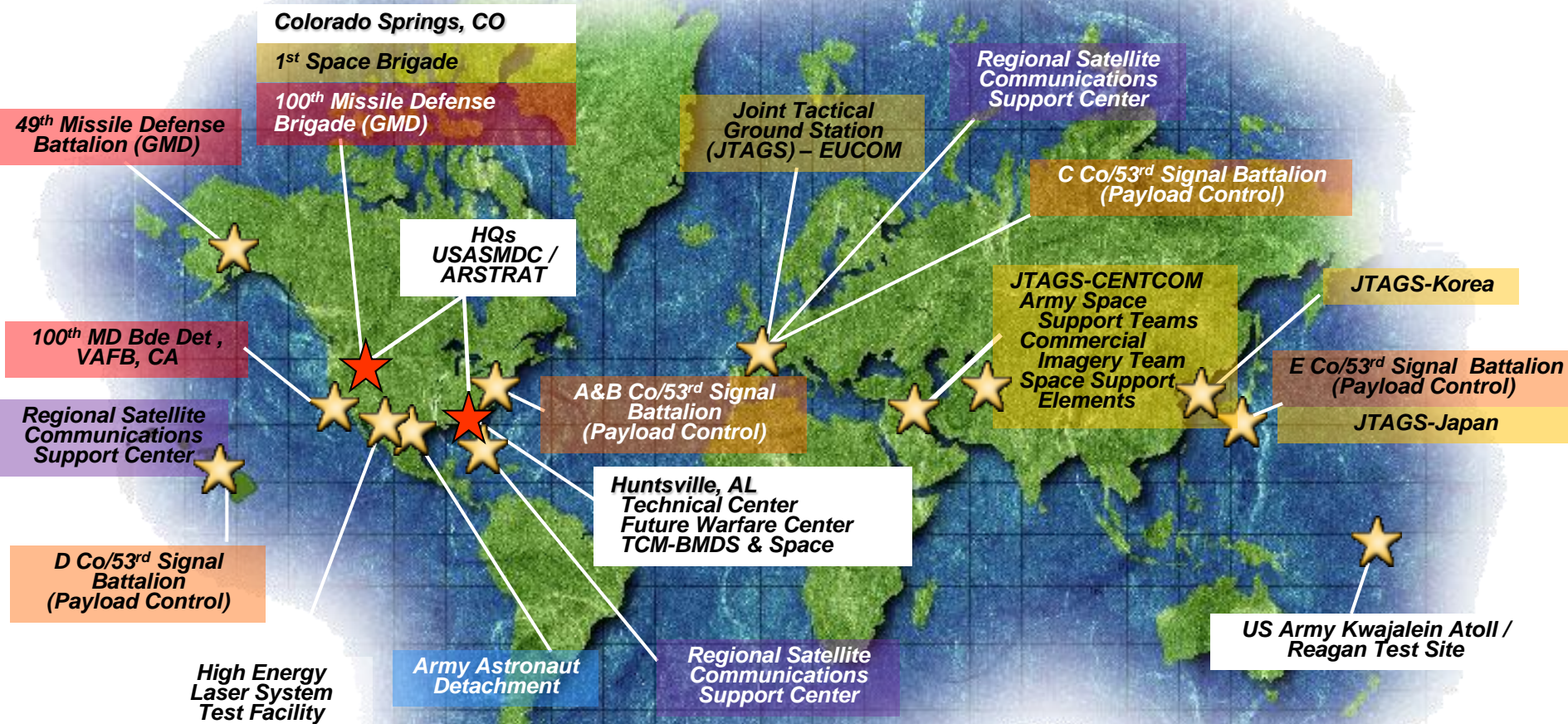


*U.S. Army Space and Missile Defense Command/  
Army Forces Strategic Command*



# USASMDC/ARSTRAT

## A Global Command



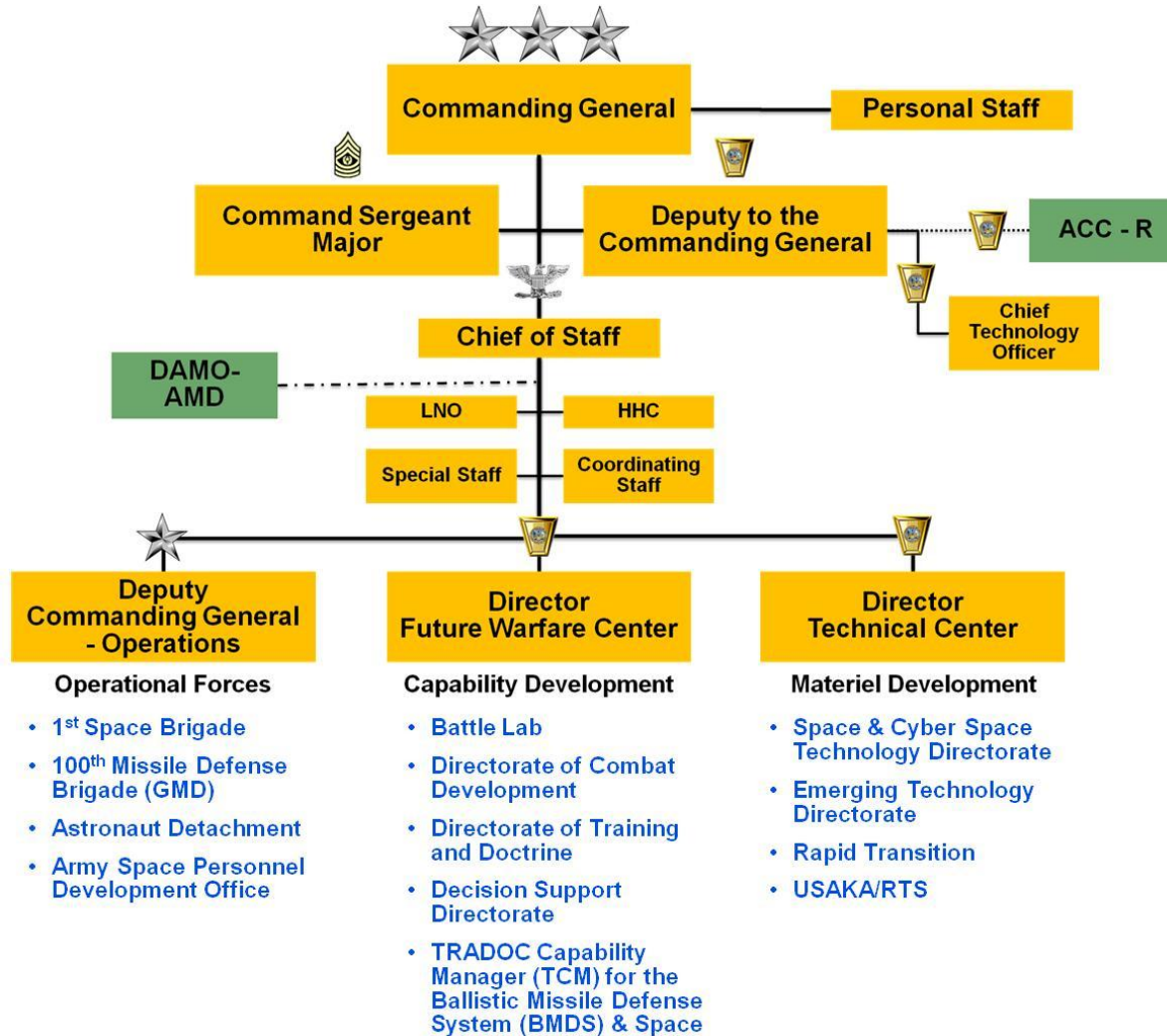
**Uniquely Organized – Geographically Well-Positioned**

*“Secure the High Ground”*

*The sun never sets on USASMDC/ARSTRAT*



# Organization



## Three Core Tasks:

- Providing trained and ready space and missile defense forces and capabilities to the COCOMs and to the Warfighter
- Building future Space and Missile Defense forces
- Researching, testing, and integrating Space, Missile Defense, cyber, directed energy, & related technologies



# USASMDC/ARSTRAT Deliverables

## Operations:

- On any given day – provide more than 840 Operational Forces; US-based, forward-stationed or deployed supporting missile defense and space operations
- Provides missile defense crews 24/7/365, protecting 300 million Americans
- Delivers theater missile warning to deployed forces
- Provides wide-band satellite communications services and support
- Provides Joint Friendly Force Tracking capability
- Provides space based imagery to ground forces
- Provides Space Tracking and Space Situational Awareness capabilities
- Executes Life Cycle Management for 300+ Space Operations Officers
- Provides Operational support for Human Space Flight programs



# USASMDC/ARSTRAT Deliverables

## Capability Development:

- Proponent for Space, High Altitude and Global Missile Defense
- Follows Doctrine, Organizations, Training, Materiel, Leader Development, Personnel and Facilities (DOTMLPF) process for building future space forces
- Nests capability development within the broader Army capability development efforts
- Develops space and missile defense doctrine
- Conducts Army Concept Development & Experimentation for Space, Missile Defense and High Altitude
- Develops the operational organization for space and missile defense
- Trains and educates the Army's space and missile defense professionals; recognized as Institute of Excellence
- Perform studies and analysis to link Space, High Altitude and Missile Defense capabilities to Army requirements
- Supporting Army leader development: teaching space operations at all levels of leader education



# USASMDC/ARSTRAT Deliverables

## Matériel Development:

- Operates Kwajalein Atoll / Reagan Test Site as a Major Range and Test Facility Base
- Space, High Altitude and Missile Defense Research and Development Initiatives
  - Nano-satellite technologies: SMDC-ONE launched 2010, Kestrel Eye in early 2012
  - Long Endurance Multi Intelligence Vehicle (LEMV) operational deployment in 2012
  - Developing Solid State Laser capability – Directed Energy
  - Developing High Power Microwave Weapons and other technologies for Counter-IED
  - Supporting Advanced Hypersonic Weapon development
- Researches and develops cyber capabilities to support Army Cyber Command





*U.S. Army Space and Missile Defense Command/  
Army Forces Strategic Command*



# USASMDC/ARSTRAT Deliverables

## **Chief Technology Officer:**

- Develops the strategies and implementation of a “gate” process for all programs (technology / test / demonstrations / etc) and to ensure effective inter-organizational efficiencies
- Evaluates requirements to assure they are technically feasible
- Monitors technical changes throughout the command

## **Contracting and Acquisition Management Office:**

- Manages 2,278 active contracts (total value \$17.6B) for Army and other agencies (FY10 obligations: \$2.4B)

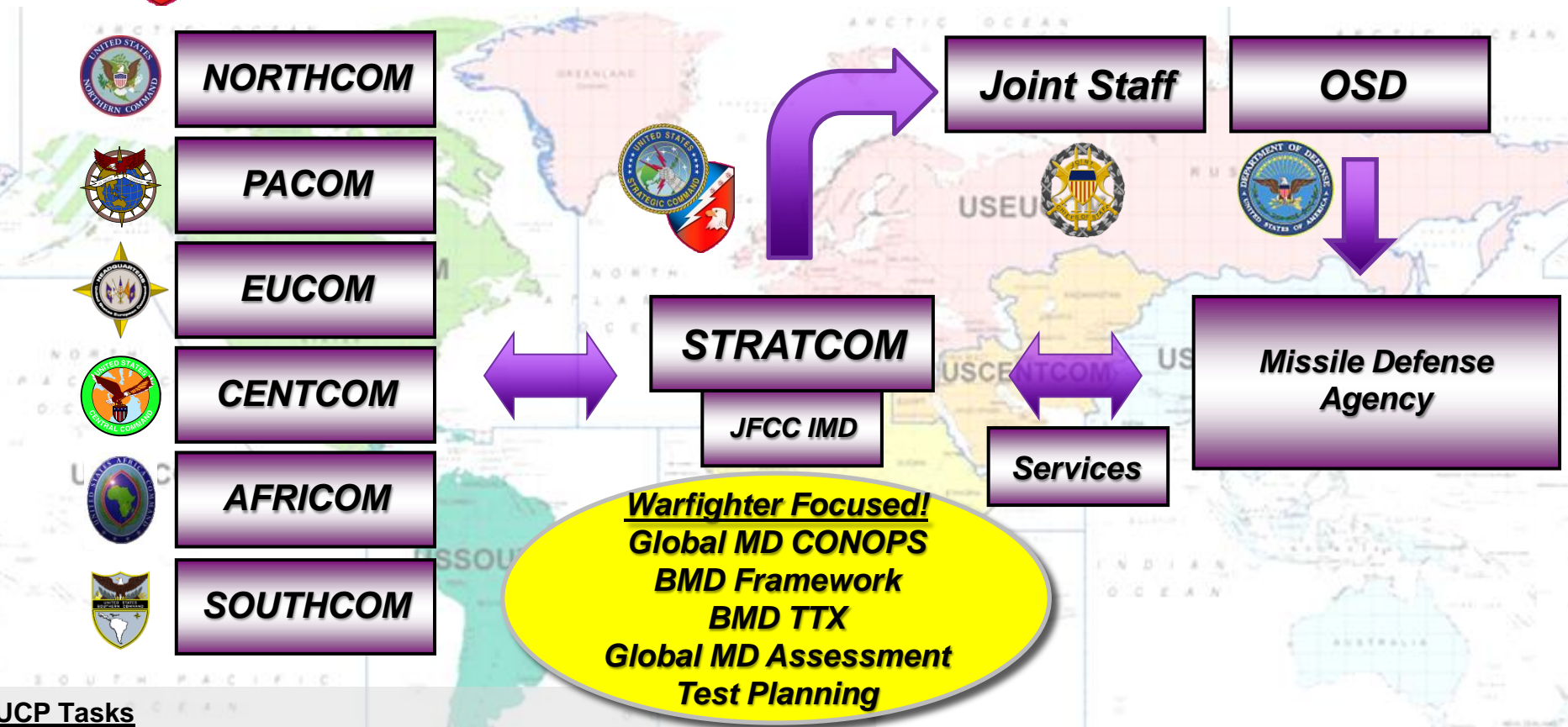


# USSTRATCOM/JFCC-IMD Vision

- JFCC IMD – a joint, diverse, global reaching component command responsible to USSTRATCOM for synchronizing Warfighter missile defense priorities across the GCCs
  - synchronizing global BMD planning in all AORs
  - optimizing the global force as Joint Functional Manager
  - coordinating operations support by managing BMD assets across the globe
  - providing alternate missile defense execution support...always ready!
- One command...diverse partners...STRATCOM HQ, JFCCs, MDA, Joint Staff, GCCs, JFCOM, Services, over 12 nations...with a talented work force of military, civilians, contractors; in synch with SMDC/ARSTRAT
- Close, collaborative relationship with MDA
  - complementary...not competitive
  - coupled with the MDA's system-based framework...synergy
- Disciplined stewards of our nation's resources – accountable
- Precise, confident, fit, disciplined, courageous Soldiers, Sailors, Airmen, Marines and Civilians; tough, caring, courageous leaders. Committed to safety in all that we do.
- A values based command – caring for our personnel and their families



# UCP and the Role of USSTRATCOM & JFCC IMD



## UCP Tasks

- Synchronize planning for global BMD
- Coordinate global BMD operations support
- Develop/Maintain Global BMD CONOPS
- Provide military representation to US national agencies, commercial entities, and international agencies
- Advocate & coordinate global missile defense and warning capabilities and support

## IMD Key Missions

- Synchronize operational missile defense planning
- Joint Functional Manager for missile defense
- Coordinate asset management for missile defense
- Provide alternate missile defense execution



## Key Points

### SMDC/ARSTRAT

- Uniquely organized – geographically well-positioned
- Providing critical capabilities to Combatant Commanders and Warfighters
- HQ Department of the Army can leverage our capabilities
- Streamlining SMDC/ARSTRAT
- Ensuring close ties with and staying in synch with HQDA, MDA, and a variety of stakeholders

### JFCC-IMD

- Operationalizing JFCC-IMD
- Trending away from bifurcation to Global Missile Defense and Theater Missile Defense
- Managing High Demand/Low Density/High Dollar assets
- Emerging threats challenge our capabilities which rely on Indications and Warning

**Great synergy dual-hatting SMDC/ARSTRAT – JFCC-IMD**



*U.S. Army Space and Missile Defense Command/  
Army Forces Strategic Command*



# Questions