



2007 Fact Book

National Cancer Institute

2007 Fact Book

U.S. DEPARTMENT OF HEALTH AND HUMAN SERVICES

National Institutes of Health

The information set forth in this publication is compiled and amended annually by the budget and finance staff of the National Cancer Institute and is intended primarily for use by members of the Institute, principal advisory groups to the Institute and others involved in the administration and management of the National Cancer Program. Questions regarding any of the information contained herein may be directed to the Office of Budget and Finance, National Cancer Institute, 9000 Rockville Pike, Bethesda, Maryland, 20892.

TABLE OF CONTENTS

Executive Summary	Fiscal Year 2007 Annual Report.....	iii
Organization	Director's Biography..... Former Directors of the NCI..... National Cancer Advisory Board..... Boards of Scientific Counselors and Advisors..... President's Cancer Panel..... Executive Committee Members..... NCI Director's Consumer Liaison Group..... Operational Organization Charts: National Cancer Institute..... Office of the Director..... OD I: Office of Management..... OD II: Center for Biomedical Informatics and Information Technology..... OD II: Office of Science Planning and Assessment..... OD III: Office of Communications and Education..... OD III: Office of Centers, Training and Resources..... OD IV: Center to Reduce Cancer Health Disparities..... OD IV: Center for Strategic and Scientific Initiatives..... Center for Cancer Research..... Division of Cancer Biology..... Division of Cancer Epidemiology and Genetics..... Division of Cancer Prevention..... Division of Cancer Control and Population Sciences..... Division of Cancer Treatment and Diagnosis..... Division of Extramural Activities.....	O-1 O-2 O-3 O-7 O-8 O-8 O-9 O-10 O-11 O-12 O-13 O-13 O-14 O-14 O-15 O-15 O-16 O-18 O-19 O-20 O-21 O-22 O-23
Cancer Statistics	Links to Cancer Statistics.....	C-1
Budget Data	NCI Budget..... Program Structure..... Extramural Funds..... NCI Obligations by Mechanism..... Division Obligations by Mechanism..... NIH Management Fund, Service & Supply Fund and GSA Rent... Special Sources of Funds..... Funding for Various Research Areas.....	B-1 B-2 B-3 B-4 B-5 B-6 B-7 B-8
Extramural Programs	Research Project Grants: Number of Awards..... Requested, Awarded..... Awards by Activity Code..... Activity Code Descriptions..... Cancer Centers By State..... Specialized Programs of Research Excellence (SPORE)..... National Research Service Awards – Pre and Post Doctoral Trainees.....	E-1 E-2 E-3 E-4 E-5 E-6 E-7

Construction/Renovation Funding.....	E-8
Grant and Contract Awards by State	E-9
Grant and Contract Awards by Country	E-10
Institutions Receiving More than \$15,000,000 in NCI Support	E-11

Historical Trends

Appropriations of the NCI	H-1
Bypass Budget Requests	H-2
Comparison of Bypass Requests and Appropriations of the NCI .	H-3
Comparison of Dollars, Positions and Space.....	H-4
Personnel Resources	H-5
AIDS Funding History	H-6

This publication may be viewed on the World Wide Web by pointing a browser to the Office of Budget and Finance homepage at <http://obf.cancer.gov/> on the National Cancer Institute's website: www.nci.nih.gov or www.cancer.gov.

Fiscal Year 2007 Annual Report

BUDGET IN REVIEW

This report provides a summary of the distribution of the Fiscal Year 2007 budget among the various National Cancer Institute (NCI) research programs and funding mechanisms, funding policies influencing grant awards, and comparisons with prior year allocations. Additional information on the NCI budget is accessible from the NCI Home Page (<http://www.cancer.gov>).

Summary

Funds available to the NCI in FY 2007 totaled over \$4.792 billion, reflecting an increase of 1% and \$45 million from the previous fiscal year.

Fiscal highlights from FY 2007 include:

- Of the total NCI budget, 44% of the funds were allocated for Research Project Grants.
- The total number of Research Project Grants (RPGs) funded was 5,472.
- Almost one-fourth of the RPGs awarded were new (Type 1) or competing renewal (Type 2) awards.
- 1,312 competing RPGs were funded.
- Approximately one-third of the total NCI budget supported ongoing non-competing (Type 5) RPGs.
- R01 grants were funded to the 15th percentile.
- 278 grants – totaling \$94 million – were funded as Small Business Innovation Research (SBIR) and Small Business Technology Transfer (STTR) awards.
- Intramural Research comprised 15% of the total NCI budget in FY 2007.
- \$498 million –10% of the total NCI budget – was allocated for Cancer Prevention & Control.

Distribution of the Budget by Funding Mechanism for FY 2006 and FY 2007

Summary Points

- The total budget for the Research Project Grant category decreased \$45 million, due to the decrease in non-competing Research Project Grants and administrative supplements.
- Funds for competing grants increased by \$20 million.
- Funds for training and career development of current and future research scientists through Research Career Awards decreased by 1.5%.
- The total budget for Cancer Centers, Specialized Centers (U54) and SPOREs increased by 1.7%.
- Funds for Cancer Centers increased \$8.2 million.
- Clinical Cooperative Groups funds increased 1.6%, while Cancer Education funds decreased by 9.3%.
- Funds for Cancer Prevention and Control fell by \$7.2 million.
- Intramural Research and Research Management and Support grew by 2.7% and 2.5%, respectively, in order to pay increased salary and operating costs.
- During FY 2007, NIH and DHHS Assessments increased by a total of \$165 thousand, including an increase of \$5 million for General Account, \$173 thousand decrease for Program Evaluation, and a \$1.2 million decrease for the Management Fund.

NCI Dollars by Mechanism for FY 2006 and 2007
(in thousands)

	2006	2007	Change '06-07	
			Am't	%
Research Project Grants:				
Noncompeting	\$1,596,655	\$1,546,958	-\$49,697	-3.1%
Admin Supplements	49,089	36,466	-12,623	-25.7%
Competing	415,067	434,713	19,646	4.7%
Subtotal, RPG	2,060,811	2,018,137	-42,674	-2.1%
SBIR/STTR	96,055	93,677	-2,378	-2.5%
Total, RPG	2,156,866	2,111,814	-45,052	-2.1%
Cancer Centers	265,002	273,184	8,182	3.1%
Specialized Cancer Centers (U54)	73,925	74,677	752	1.0%
SPOREs	124,933	123,808	-1,125	-0.9%
Total: Centers, Spec Ctrs, & SPOREs	463,860	471,669	7,809	1.7%
Research Career Program	80,836	79,595	-1,241	-1.5%
Cancer Education	34,561	31,337	-3,224	-9.3%
Clinical Cooperative Groups	145,919	148,193	2,274	1.6%
Other Grants	65,777	63,756	-2,021	-3.1%
Subtotal, Other	327,094	322,881	-4,213	-1.3%
Total, Research Grants	2,947,820	2,906,364	-41,456	-1.4%
National Research Service Awards	66,617	68,223	1,606	2.4%
R&D Contracts	347,766	416,850	69,084	19.9%
Intramural Research	687,342	706,179	18,837	2.7%
Research Management & Support	184,135	188,683	4,548	2.5%
Cancer Prevention & Control	505,625	498,396	-7,229	-1.4%
Construction	0	0	0	0.0%
Buildings and Facilities	7,920	7,920	0	0.0%
Total, NCI	4,747,225 *	4,792,615 *	45,390	1.0%
AIDS research included above	[\$253,666]	[\$253,666]	0	0.0%

* EXCLUDES projects awarded with Stamp Out Breast Cancer funds.

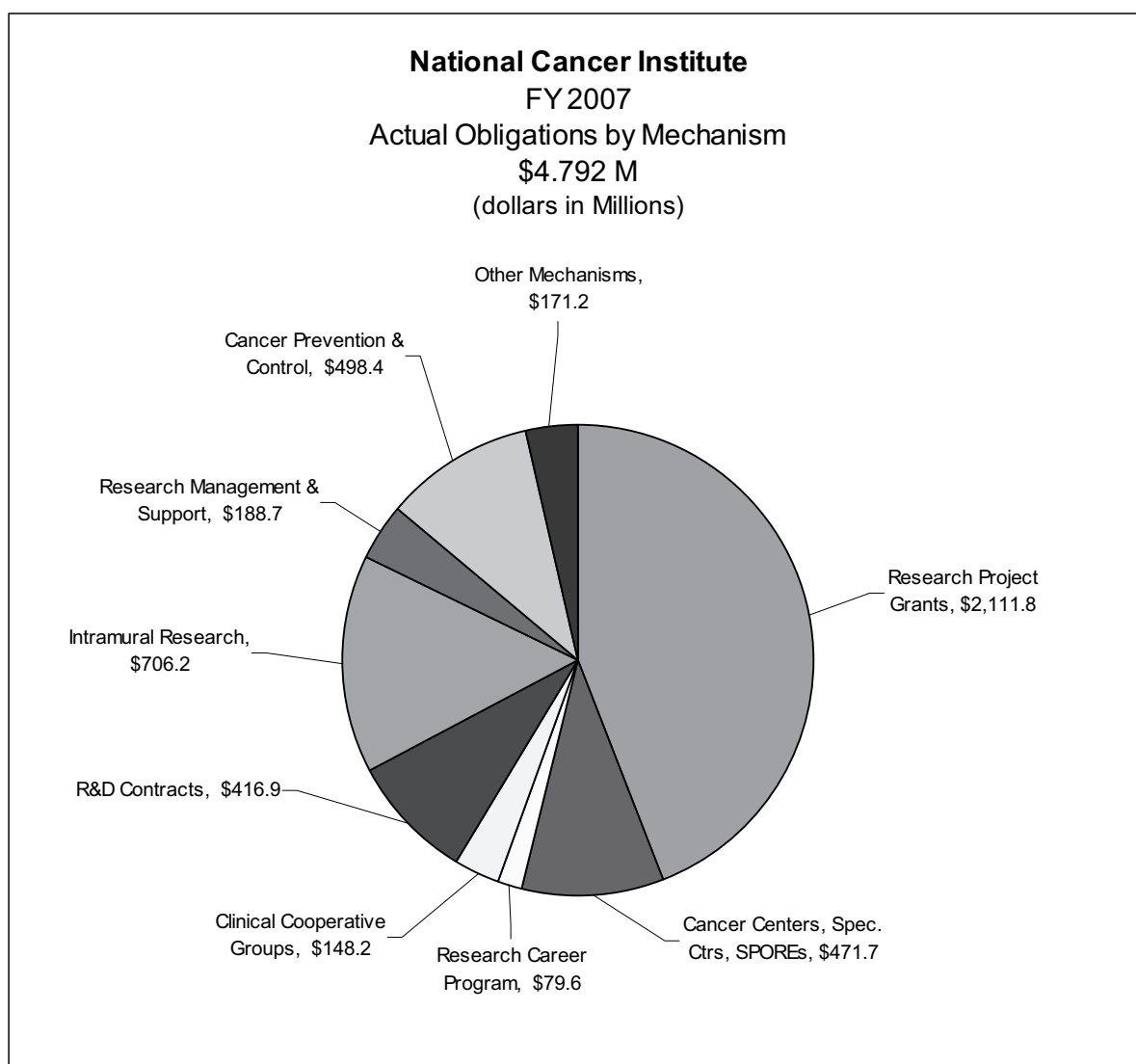
Percent Share of Total NCI Dollars

Summary Points

- The mechanism shares of the total budget have remained relatively stable from FY 2003 to FY 2007.
- Intramural Research remains under 15% of total NCI dollars.

Percent Share of Total NCI Dollars

	2003	2004	2005	2006	2007
Research Project Grants	44.8%	45.8%	45.6%	45.4%	44.1%
Cancer Centers	5.1%	5.2%	5.3%	5.6%	5.7%
Specialized Centers	0.4%	0.6%	1.4%	1.6%	1.6%
SPOREs	2.7%	2.9%	2.8%	2.6%	2.6%
Clinical Cooperative Groups	3.5%	3.3%	3.0%	3.1%	3.1%
Intramural Research	15.1%	15.0%	14.8%	14.5%	14.7%
R&D Contracts	8.1%	7.7%	7.3%	7.3%	8.7%
Cancer Prevention & Control	11.6%	11.2%	11.1%	10.7%	10.4%
Other Mechanisms	8.6%	8.3%	8.7%	9.3%	9.2%



Funding Trends

Summary Points

- The NCI budget has increased by \$200.3 million – or 4.4% – since FY 2003. Cancer Centers, Specialized Centers, and R&D Contracts have experienced percentage increases greater than the total NCI growth since FY 2003.

Historical Funding Trends (Dollars in Millions)

	2003	2004	2005	2006	2007
Total NCI	\$4,592.3	\$4,723.9	\$4,794.8	\$4,747.2	\$4,792.6
Research Project Grants	2,058.7	2,161.4	2,188.9	2,156.9	2,111.8
Intramural Research	693.1	708.9	711.0	687.3	706.2
Cancer Centers	235.8	245.7	255.3	265.0	273.2
Specialized Centers	19.2	14.2	66.0	73.9	74.7
SPOREs	123.1	149.4	133.0	124.9	123.8
Clinical Cooperative Groups	158.7	154.3	142.8	145.9	148.2
Cancer Prevention & Control	533.2	530.0	531.6	505.6	498.4
R&D Contracts	370.8	361.6	351.1	347.8	416.9
Other Mechanisms	399.7	398.4	415.1	439.8	439.4

% Growth by Mechanism

	2003 to 2004	2004 to 2005	2005 to 2006	2006 to 2007	2003 to 2007
Total NCI	2.9%	1.5%	-1.0%	1.0%	4.4%
Research Project Grants	5.0%	1.4%	-1.5%	-2.1%	2.6%
Intramural Research	2.3%	0.3%	-3.3%	2.7%	1.9%
Cancer Centers	4.2%	3.9%	3.8%	3.1%	15.9%
Specialized Centers	-26.0%	365.0%	12.0%	1.0%	288.9%
SPOREs	9.5%	-1.4%	-6.1%	-0.9%	0.6%
Clinical Cooperative Groups	-2.7%	-7.5%	2.2%	1.6%	-6.6%
Cancer Prevention & Control	-0.6%	0.3%	-4.9%	-1.4%	-6.5%
R&D Contracts	-2.5%	-2.9%	-0.9%	19.9%	12.4%
Other Mechanisms	-0.4%	2.2%	6.0%	-0.1%	9.9%

Research Project Grants

Summary Points

- 83% of competing dollars supported grants awarded within the established payline; 17% supported grants as an exception to the payline.
- RFA funds, which decreased from the FY 2005 dollar level, accounted for 4% of FY 2007 competing dollars.
- Research Project Grant applications submitted to NCI increased by approximately 0.6%.
- A total of 1,312 competing RPG's were funded.

Research Project Grants

(Dollars in Thousands)

	2006*		2007*	
	No.	Amount	No.	Amount
Total funding for RPGs	5,435	\$2,156,866	5,472	\$2,111,814
SBIR/STTR	263	\$96,055	278	\$93,677
Funding for RPGs without SBIR/STTR Program	5,172	\$2,060,811	5,194	\$2,018,137
Continuation or noncompeting grants funded	3,892	\$1,645,744	3,882	\$1,488,237
Competing grants funded	1,280	\$415,067	1,312	\$434,713
Administrative Supplements	290	\$49,089	259	\$36,466
Partial assessment for DHHS Program Evaluation		\$58,721		\$58,721
Funds set aside within competing dollars for:				
Grants within Paylines:	1,134	\$364,475	1,112	\$359,411
Traditional R01	691	\$219,040	621	\$210,161
Program Projects (P01)	31	\$60,781	30	\$66,060
RFA Grants	66	\$26,873	55	\$18,463
Share of competing grant funds		6.47%		4.25%
Exception Grants	146	\$50,592	200	\$75,302
Share of competing grant funds		12.19%		17.32%
Competing Application Requests	6,566	\$2,156,868	6,567	\$2,434,949
Funding Success Rate	19.4%		20.2%	
Percentile funding for R01 grants	12th		15th	
Average Cost-Competing		\$321		\$331
Average Reduction from recommended/requested levels		-28%		-22%

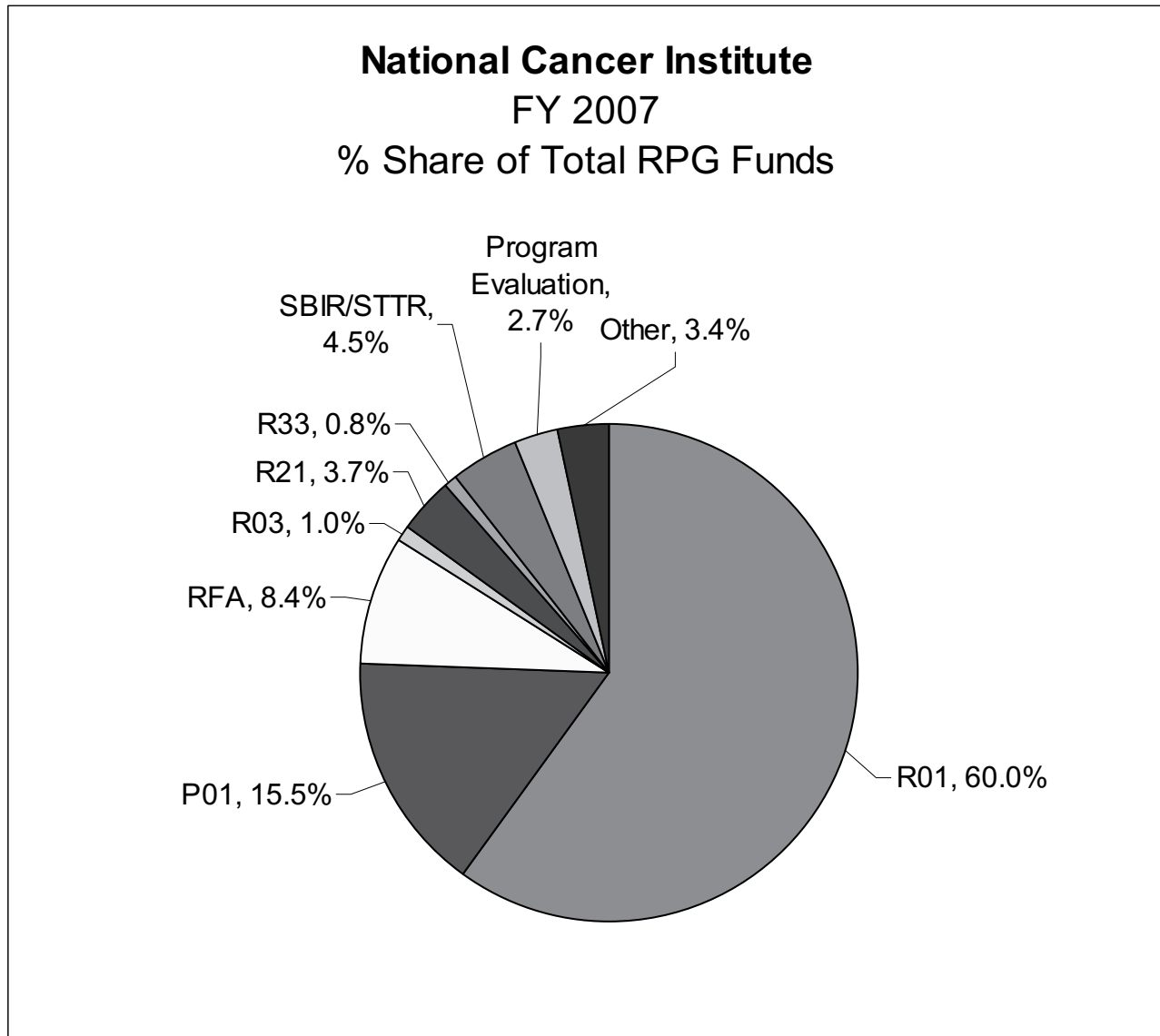
*EXCLUDES projects awarded with Stamp Out Breast Cancer funds.

Grant Funding Paylines

RPG Mechanisms:	2006	2007	
R01 Traditional Grants	12th	15th	percentile
P01 Program Projects	N/A*	N/A*	priority score
R03 Small Grants	210	210	priority score
R21 Exploratory Phase I**	14th	17th	percentile
R33 Exploratory Phase II	155	155	priority score
R41/R42 STTR	165	205	priority score
R43/R44 SBIR	180	205	priority score

* Formal paylines for P01 grants are determined by the Executive Committee

**Payline in priority score format for 2005.



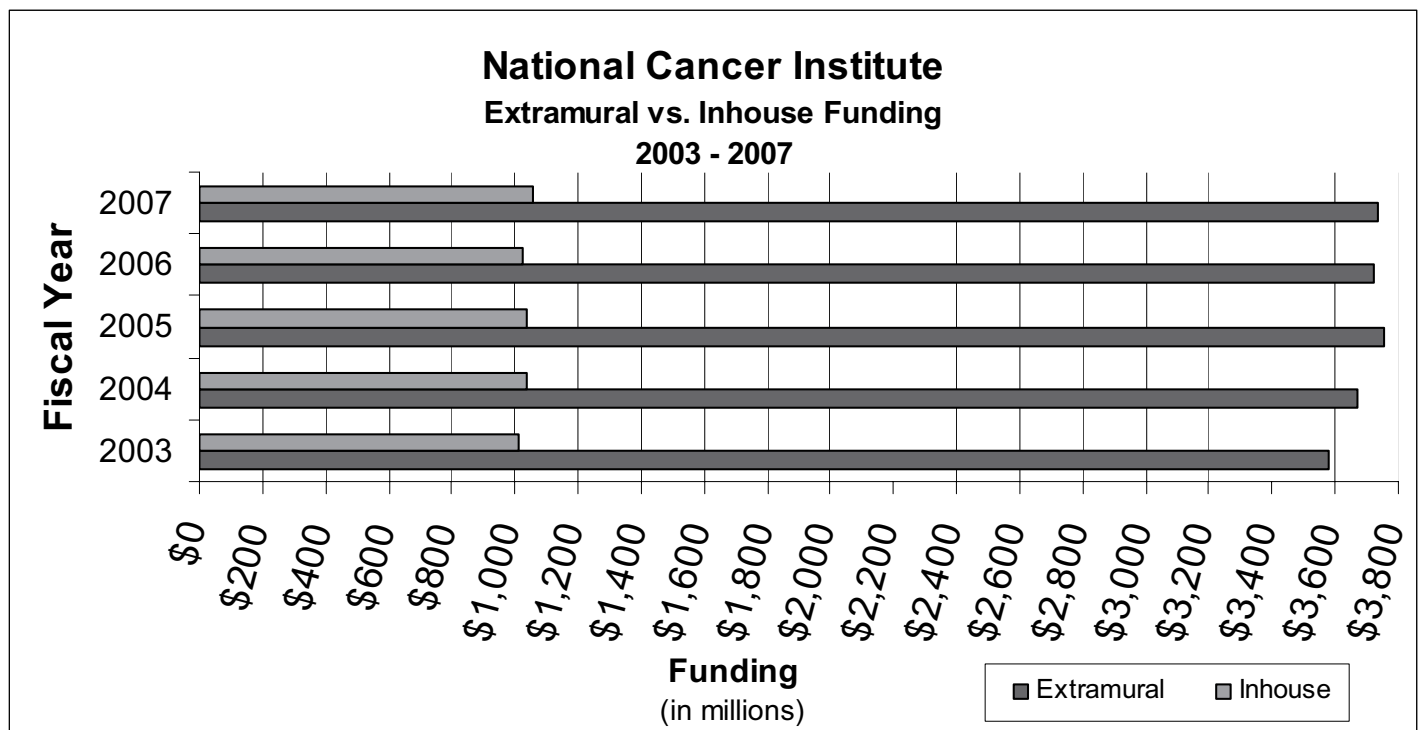
**National Cancer Institute
Extramural vs. Inhouse Funding**

(dollars in millions)

Mechanism	Extramural					03-07% chg.
	2003	2004	2005	2006	2007	
Research Project Grants	\$2,058.7	\$2,161.4	\$2,188.9	\$2,156.9	\$2,111.8	2.6%
Cancer Centers	235.8	245.7	255.3	265.0	273.2	15.9%
Specialized Centers	19.2	14.1	66.0	73.9	74.7	288.9%
SPOREs	123.1	134.8	133.0	124.9	123.8	0.6%
Other Research Grants	320.3	314.9	309.0	327.1	322.9	0.8%
NRSA	65.9	66.2	67.3	66.6	68.2	3.5%
R&D Contracts	370.8	361.6	351.1	347.8	416.9	12.4%
Cancer Control Grants	221.6	220.0	232.0	213.5	200.1	-9.7%
Cancer Control Contracts	160.0	153.0	145.8	137.1	133.7	-16.4%
Construction	5.0	0	0	0	0	-100.0%
Buildings & Facilities	0	0	7.9	7.9	7.9	100.0%
Total Extramural Funds	3,580.3	3,671.7	3,756.3	3,720.7	3,733.2	4.3%

Mechanism	Inhouse					03-07% chg.
	2003	2004	2005	2006	2007	
Intramural Research	\$693.1	\$708.9	\$711.0	\$687.3	\$706.2	1.9%
RMS	167.3	171.6	173.7	184.1	188.7	12.8%
Control Inhouse	151.5	157.0	154.0	155.0	164.5	8.6%
Total Inhouse Funds	1,011.9	1,037.5	1,038.7	1,026.5	1,059.4	4.7%

Total NCI	4,592.2	4,709.2	4,795.0	4,747.2	4,792.6	4.4%
------------------	----------------	----------------	----------------	----------------	----------------	-------------



Research Career Awards – “K” Program

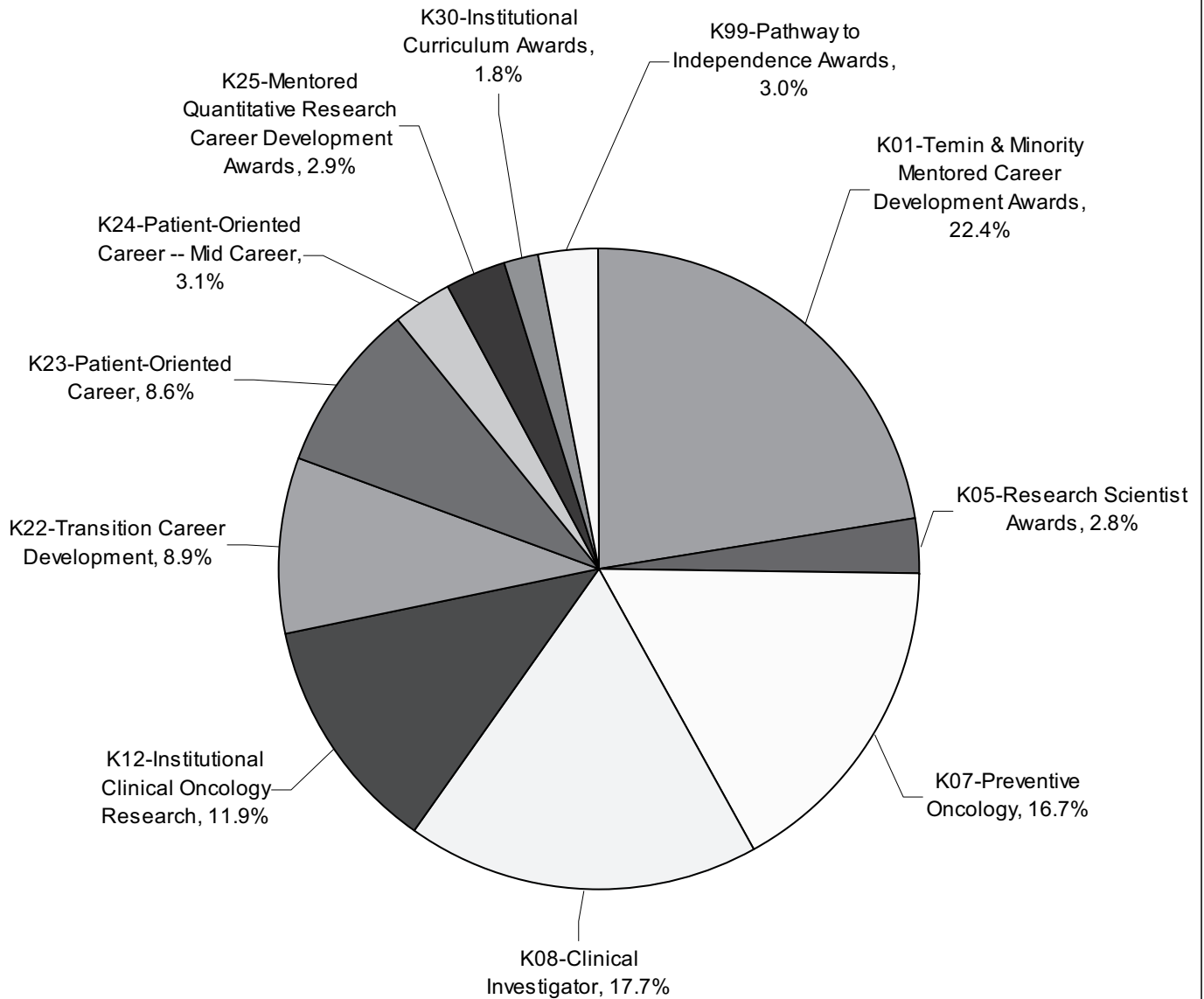
Summary Points

- The Research Career Award mechanism decreased by 1.5% in FY 2007.
- The number of Research Career Awards decreased by 25 in FY 2007 from FY 2006.
- NCI’s funding in FY 2007 for the K30 Institutional Curriculum Awards, which are administered by the National Center for Research Resources, was \$1.5 million.
- NCI funded 20 awards for the new NIH Pathway to Independence program.

(Dollars in Thousands)

		2006		2007	
		No.	Amount	No.	Amount
K01	Temin Awards	88	12,493	76	11,015
K01	Minority Mentored Career Development Award	48	6,332	50	6,816
Subtotal, K01s		136	18,825	126	17,831
K05	Research Scientist Award	17	2,173	17	2,266
K07	Preventive Oncology	117	14,657	99	13,269
K08	Clinical Investigator	136	16,851	112	14,119
K12	Institutional Clinical Oncology Research	16	9,438	16	9,472
K22	Transition Career Development	38	5,818	46	7,114
K23	Patient-Oriented Career	60	7,617	51	6,845
K24	Patient-Oriented Career -- Mid Career	17	2,557	16	2,491
K25	Mentored Quantitative Research Career Development Award	11	1,506	17	2,343
		548	79,442	500	75,750
K30	Institutional Curriculum Awards -- Administered by NCRR	2	1,394	5	1,462
K99	NIH Pathway to Independence Awards			20	2,383
Total Research Career Program		550	80,836	525	79,595

National Cancer Institute
FY 2007
% of Total Research Award Funds



Research Dollars by Various Cancers

Summary Points

- Funding for various cancers listed below may overlap
- Funding for cancers listed below do not represent the entire NCI budget

Research Dollars by Various Cancers
(Dollars in Millions)

	2003	2004	2005	2006	2007
Total NCI	\$4,592.3	\$4,723.9	\$4,794.7	\$4,747.2	\$4,792.6
AIDS	263.4	267.0	265.9	253.7	253.7
Brain & Central Nervous System	111.5	132.3	124.9	130.3	148.2
Breast Cancer	548.7	566.2	560.1	584.7	572.4
Cervical Cancer	79.0	79.0	81.7	83.3	82.4
Clinical Trials	799.5	800.0	781.8	822.3	843.7
Colorectal Cancer	261.6	262.0	253.1	244.1	258.4
Head and Neck	77.7	88.2	89.5	71.3	66.2
Hodgkin's Disease	16.5	17.4	17.2	20.9	16.5
Leukemia	200.9	214.7	220.6	223.5	205.5
Liver Cancer	63.7	63.0	60.5	62.7	67.7
Lung Cancer	273.5	276.5	266.1	242.9	226.9
Melanoma	90.7	94.9	102.9	108.0	97.7
Multiple Myeloma	26.3	23.9	28.2	30.3	32.3
Non Hodgkin's Lymphoma	95.2	99.6	107.0	114.1	113.0
Ovarian Cancer	99.4	99.5	97.7	95.1	96.9
Pancreatic Cancer	42.3	52.7	66.7	74.2	73.3
Prostate Cancer	305.2	308.5	309.0	293.2	296.1
Stomach Cancer	13.4	11.6	11.0	11.5	12.0
Uterine Cancer	25.5	27.0	31.1	19.4	16.6

National Cancer Institute

Director's Biography

John E. Niederhuber, M.D.

John E. Niederhuber, M.D. became Director of the National Cancer Institute (NCI) in September 2006. Throughout his distinguished career, he has had ties to both NCI and the National Institutes of Health. In addition to his work as a surgeon, professor, researcher, department chair, senior associate dean, and cancer center director, Dr. Niederhuber has also been the chair of the National Cancer Advisory Board, an external NCI advisor and grant reviewer, and a laboratory investigator supported by NCI and the NIH. He joined NCI in September 2005 as Deputy Director for Translational and Clinical Sciences, and became NCI's Acting Director in June 2006.

In addition to his leadership of the NCI, Dr. Niederhuber heads the Laboratory of Tumor and Stem Cell Biology in NCI's Center for Cancer Research, and also holds a clinical appointment on the NIH Clinical Center Medical staff. His lab is studying tissue stem cells as the cell-of-origin for cancer, as well as the complex relationship between tumor cells and their microenvironment.

As a surgeon, Dr. Niederhuber's clinical emphasis is on gastrointestinal cancer, hepatobiliary (liver, bile duct, and gallbladder) cancer, and breast cancer. Recognized for his pioneering work in hepatic artery infusion chemotherapy, he was also the first to demonstrate the feasibility of totally implantable vascular access devices.

Prior to coming to NCI, Dr. Niederhuber spent his years as Director of the University of Wisconsin Comprehensive Cancer Center, and a professor of surgery and oncology at the University of Wisconsin School of Medicine. Earlier in his career, he chaired the Department of Surgery at Stanford University, and held professorships at the Johns Hopkins University School of Medicine and at the University of Michigan.

A native of Steubenville, Ohio, Dr. Niederhuber is a graduate of Bethany College in West Virginia and the Ohio State University School of Medicine.

Former Directors of the National Cancer Institute

Andrew C. von Eschenbach, M.D.
January 2002 – September 2005

Andrew C. von Eschenbach, M.D. became the 12th Director of the National Cancer Institute in January 2002. He is a nationally recognized urologic surgeon who formerly directed the Genitourinary Cancer Center and the Prostate Cancer Research Program at The University of Texas M.D. Anderson Cancer Center in Houston, Texas. He also served as special assistant for external affairs to M.D. Anderson's president and held the Roy M. and Phyllis Gough Huffington Clinical Research Distinguished Chair in Urologic Oncology.

Richard D. Klausner, M.D.
August 1995 – September 2001

Dr. Klausner was appointed as the Director of the National Cancer Institute (NCI) on August 1, 1995. From 1984 until 1997 he was Chief of the Cell Biology and Metabolism Branch of the National Institute of Child Health & Human Development.

Samuel Broder, M.D.
December 1988 – March 1995

Dr. Broder joined NCI in 1972 as a Clinical Associate in the Metabolism Branch. In 1981, he became Associate Director for NCI's Clinical Oncology Program.

Vincent T. DeVita, Jr., M.D.
January 1980 – June 1980 (Acting)
July 1980 – August 1988

Dr. DeVita joined NCI in 1963 as a Clinical Associate in the Laboratory of Chemical Pharmacology. He served NCI as head of the Solid Tumor Service, Chief of the Medicine Branch, Director of the Division of Cancer Treatment and Clinical Director prior to his appointment as Director of NCI.

Arthur Canfield Upton, M.D.
July 1977 – December 1979

Prior to his tenure as NCI Director, Dr. Upton served as Dean of the School of Basic Health Sciences at the State University of New York at Stony Brook.

Frank Joseph Rauscher, Jr., Ph.D.
May 1972 – October 1976

Dr. Rauscher served as Scientific Director for Etiology, NCI, prior to his appointment as Director of NCI in 1972.

Carl Gwin Baker, M.D.
November 1969 – July 1970 (Acting)
July 1970 – April 1972

During his tenure with PHS, Dr. Baker served as Scientific Director for Etiology, NCI, and as Acting Director of NCI prior to his appointment as Director in July 1970.

Kenneth Milo Endicott, M.D.
July 1960 – November 1969

Dr. Endicott served as Chief of the Cancer Chemotherapy National Service Center, PHS, and as Associate Director, NIH, prior to being appointed Director of NCI in July 1960.

John Roderick Heller, M.D.
May 1948 – June 1960

Dr. Heller joined PHS in 1934 and became Chief of the Venereal Disease Division prior to his appointment as Director of NCI in 1948.

Leonard Andrew Scheele, M.D.
July 1947 – April 1948

Dr. Scheele served in various capacities during his tenure with PHS prior to his appointment as Assistant Chief and, subsequently, Director of NCI in July 1947.

Roscoe Roy Spencer, M.D.
August 1943 – July 1947

Dr. Spencer became NCI's first Assistant Chief and, subsequently, was appointed Director of the Institute in 1943.

Carl Voegtlin, Ph.D.
January 1938 – July 1943

Dr. Voegtlin served as Professor of Pharmacology and Chief of the Division of Pharmacy at the Hygienic Laboratory prior to becoming the first Director of NCI in 1938.

National Cancer Advisory Board

Membership and Term

2008 Chairperson

Carolyn D. Runowicz, M.D.

The Carol and Ray Neag Comprehensive
Cancer Center
University of Connecticut Health Center
Farmington, CT 06030

2012 Anthony Atala, M.D.

Wake Forest Institute for Regenerative
Medicine
Department of Urology
Wake Forest University School of Medicine
Winston-Salem, NC 27157

2012 Bruce A. Chabner, M.D.

Massachusetts General Hospital
Cancer Center
Massachusetts General Hospital
Boston, MA 02114

2008 Moon S. Chen, Jr., Ph.D., M.P.H.

Asian American Network for Cancer
Awareness Research and Training
Population Research and Cancer Disparities
University of California Davis Cancer Center
University of California
Sacramento, CA 95817

2012 Donald S. Coffey, Ph.D.

Departments of Urology/Oncology/Pathology
Pharmacology and Molecular Science
Johns Hopkins University School of Medicine
Baltimore, MD 21287

2008 Kenneth H. Cowan, M.D., Ph.D.

UNMC Eppley Cancer Center
Eppley Institute for Research in Cancer
University of Nebraska Medical Center
Omaha, NE 68198

2008 Jean B. deKernion, M.D.

Department of Urology
David Geffen School of Medicine
University of California at Los Angeles
Los Angeles, CA 90095

2010 Lloyd K. Everson, M.D.

US Oncology Incorporated
Houston, TX 77060

2012 Judah Folkman, M.D.

Vascular Biology Program
Children's Hospital of Boston
Harvard Medical School
Karp Family Research Laboratories
Boston, MA 02115

2010 Kathryn Giusti, M.B.A.

Multiple Myeloma Research Foundation, Inc.
Multiple Myeloma Research Consortium
Norwalk, CT 06851

2012 Mr. Robert A. Ingram

GlaxoSmithKline
Research Triangle Park, NC 27709

2010 Mr. David H. Koch

Koch Industries
New York, NY 10021

2010 Diana M. Lopez, Ph.D.

Department of Microbiology and Immunology
University of Miami Miller School of Medicine
Miami, FL 33136

2012 Karen Dow Meneses, Ph.D.

School of Nursing
University of Alabama at Birmingham
Birmingham, AL 35294

2008 Franklyn G. Prendergast, M.D., Ph.D.

Mayo Clinic Comprehensive Cancer Center
Mayo Foundation
Rochester, MN 55905

2008 Lydia G. Ryan, M.S.N., P.N.P.

Children's Healthcare of Atlanta
AFLAC Cancer Center
Atlanta, GA 30322

2010 Daniel D. Von Hoff, M.D., F.A.C.P.

Translational Drug Development Division
Translational Genomics Research Institute
University of Arizona Department of Medicine
Phoenix, AZ 85004

Executive Secretary

Paulette S. Gray, Ph.D.

Committee Management Officer

Ms. Claire L. Harris

National Cancer Advisory Board (Continued)

Ex Officio Members

The Honorable Elaine Chao, M.B.A.

Secretary of Labor
Washington, DC 20210

Andrew C. von Eschenbach, M.D.

Commissioner
Food and Drug Administration
Rockville, MD 20857

John Howard, M.D., M.P.H., J.D., LL.M.

Director
National Institute for Occupational Safety and Health
Washington, DC 20201

Mr. Stephen L. Johnson

Administrator
Environmental Protection Agency
Washington, DC 20460

The Honorable Michael J. Kussman, M.D., M.S., M.A.C.P.

Under Secretary for Health
Veterans Health Administration
Department of Veterans Affairs
Washington, DC 20420

The Honorable Michael O. Leavitt

Secretary
Department of Health and Human Services
Washington, DC 20201

The Honorable John H. Marburger, III, Ph.D.

Science Advisor to the President
Director
Office of Science and Technology Policy
Executive Office of the President
Washington, DC 20502

Ms. Nancy A. Nord

Acting Chairperson
Consumer Product Safety Commission
Bethesda, MD 20814

Ari Patrinos, Ph.D.

Associate Director
Office of Biological and Environmental Research
U.S. Department of Energy
Washington, DC 20585

David A. Schwartz, M.D.

Director
National Institute of Environmental Health Sciences
National Institutes of Health
Research Triangle Park, NC 27709

The Honorable Dr. William Winkwerder, Jr.

Assistant Secretary of Defense for Health Affairs
The Pentagon
Washington, DC 20301

Elias A. Zerhouni, M.D.

Director
National Institutes of Health
Bethesda, MD 20892

National Cancer Advisory Board (Continued)

Alternates to Ex Officio Members

Irma A. Arispe, Ph.D.
Assistant Director for Life Sciences
Office of Science and Technology Policy
Executive Office of the President
Washington, DC 20502
(John H. Marburger III, Ph.D.-OSTP)

Michael A. Babich, Ph.D.
Directorate for Health Sciences
U.S. Consumer Product Safety Commission
Bethesda, MD 20814
(Ms. Nancy A. Nord - CPSC)

Allen Dearry, Ph.D.
Interim Associate Director
National Toxicology Program
National Institute of Environmental Health Sciences
National Institutes of Health
Research Triangle Park, NC 27709
(David A. Schwartz, M.D., - NIEHS)

Raynard Kington, M.D., Ph.D.
Deputy Director
National Institutes of Health
Bethesda, MD 20892
(Elias A. Zerhouni, M.D., - NIH)

Peter Kirchner, M.D.
Senior Scientist
Office of Biological & Environmental Research
Division of Medical Science
U.S. Department of Energy
Germantown, MD 20874
(Ari Patrinos, Ph.D. - DOE)

TBN
Veterans Health Administration
Department of Veterans' Affairs
Washington, DC 20420
(The Honorable Michael J. Kussman, M.D., M.S., M.A.C.P. - VA)

Richard Pazdur, M.D.
Division Director
Division of Oncology Drugs
Food and Drug Administration
Rockville, MD 20857
(Andrew C. von Eschenbach, M.D. - FDA)

John F. Potter, M.D.
Director
United States Military Cancer Institute
Walter Reed Army Medical Center
Washington D.C. 20307
(The Honorable Dr. William Winkwerder, Jr. - DOD)

R. Julian Preston, Ph.D.
Acting Associate Director for Health
U.S. Environmental Protection Agency
Research Triangle Park, NC 27703
(Mr. Stephen L. Johnson - EPA)

Dori Reissman, M.D., M.P.H.
Senior Medical Advisor
Office of the Director
National Institute for Occupational Safety
and Health
Washington, DC 20201
(John Howard, M.D., M.P.H., J.D., LL.M. - NIOSH)

Donald J. Wright, M.D. MPH
Director
Office of Occupational Medicine
Department of Labor, OSHA
Washington, DC 20210
(The Honorable Elaine Chao - DOL)

Note: Bold print represents Ex Officio Members

National Cancer Advisory Board (Continued)

NCAB Subcommittee Assignments

Subcommittee on Activities and Agenda

Dr. Carolyn Runowicz - Chair
Dr. Diana Lopez
Dr. Karen Meneses
EXECUTIVE SECRETARY: Dr. Paulette Gray
(301) 496-5147

Subcommittee on Cancer Centers

Dr. Bruce Chabner - Chair
Dr. Moon Shao-Chuang Chen, Jr.
Dr. Kenneth Cowan
Dr. Lloyd Everson
Dr. Karen Meneses
Ms. Lydia Ryan
EXECUTIVE SECRETARY: TBD

Subcommittee on Clinical Investigations

Dr. Kenneth Cowan - Chair
Dr. Anthony Atala
Dr. Bruce Chabner
Dr. Jean deKernion
Dr. Lloyd Everson
Ms. Kathryn Giusti
Dr. Karen Meneses
Dr. Daniel Von Hoff
EXECUTIVE SECRETARY: Dr. Jeff Abrams
(301) 496-2522

Subcommittee on Planning and Budget

Mr. Robert Ingram - Chair
Dr. Bruce Chabner
Dr. Jean deKernion
Dr. Judah Folkman
Mr. David Koch
Dr. Diana Lopez
EXECUTIVE SECRETARY: Mr. Jim Dickens
(301) 496-5803

Subcommittee on Special Actions

Dr. Kenneth Cowan - Chair
Committee of the Whole
EXECUTIVE SECRETARY: Dr. Paulette Gray
(301) 496-5147

Ad hoc Subcommittee on Communications

Ms. Lydia Ryan - Chair
Dr. Jean deKernion
Dr. Lloyd Everson
Mr. Robert Ingram
Dr. Diana Lopez
Dr. Karen Meneses
EXECUTIVE SECRETARY: Dr. Lenora Johnson
(301) 451-4056

Ad hoc Subcommittee on Confidentiality of Patient Data

TBD

Ad hoc Subcommittee on Biomedical Technology

Dr. Donald Coffey - Chair
Dr. Anthony Atala
Dr. Jean deKernion
Ms. Kathryn Giusti
Mr. Robert Ingram
Mr. David Koch
Dr. Karen Meneses
Dr. Franklyn Prendergast

EXECUTIVE SECRETARY: Dr. Carolyn Compton
(301) 496-1550

Ad hoc Subcommittee on Experimental Therapeutics

Dr. Daniel Von Hoff - Chair
Dr. Bruce Chabner
Dr. Kenneth Cowan
Dr. Jean deKernion
Dr. Judah Folkman
Dr. Franklyn Prendergast
EXECUTIVE SECRETARY: Dr. Joseph Tomaszewski
(301) 496-6711

Board of Scientific Counselors Intramural Programs

Clinical Sciences and Epidemiology

Appointees	Expiration of Appointment	Appointees	Expiration of Appointment
Chair - Theodore Lawrence, M.D., Ph.D.	2009		
Wadih Arap, M.D., Ph.D.	2011	Susan Leigh, RN	2008
Martin Blaser, M.D.	2010	Maria Martinez, Ph.D.	2010
Michael Caligiuri, M.D.	2011	Susan Mayne, Ph.D.	2009
Eugenia Calle, Ph.D.	2011	Monica Morrow, M.D.	2010
William Cance, M.D.	2011	Andrew Olshan, Ph.D.	2009
David Carbone, M.D., Ph.D.	2010	Timothy Rebbeck, Ph.D.	2009
Esteban Celis, M.D., Ph.D.	2008	Eric Rowinsky, M.D.	2008
Leland Chung, Ph.D.	2008	Charles Sawyers, M.D.	2009
Scott Davis, Ph.D.	2010	Daniel Schaid, Ph.D.	2011
Barbara Gilchrest, M.D.	2009	Paul Sondel, M.D., Ph.D.	2009
Richard Hoppe, M.D.	2010	Ann Thor, M.D.	2010
Elizabeth Jaffee, M.D.	2010		
Bruce Korf, M.D., Ph.D.	2008	Executive Secretary - Brian Wojcik, Ph.D.	

Basic Sciences

Chair - Katherine Jones, Ph.D.	2008		
Cory Abate-Shen, Ph.D.	2011	Wendell Lim, Ph.D.	2011
Dafna Bar-Sagi, Ph.D.	2011	Frank Rauscher, Ph.D.	2010
Stephen Benkovic, Ph.D.	2008	Martine Roussel, Ph.D.	2008
Christine Biron, Ph.D.	2010	Leona Samson, Ph.D.	2010
Selina Chen-Kiang, Ph.D.	2011	Robert Siliciano, M.D., Ph.D.	2009
Olivera Finn, Ph.D.	2010	Paul Spearman, M.D.	2011
Michael Gould, Ph.D.	2009	Joseph Testa, Ph.D.	2010
James Haber, Ph.D.	2010	Paul Ts'o, Ph.D.	2010
Nancy Haigwood, Ph.D.	2011	Teresa Wang, Ph.D.	2008
Thomas Hamilton, Ph.D.	2011	Jerry Workman, Ph.D.	2009
Laurence Hurley, Ph.D.	2011	Ming You, Ph.D.	2011
Michael Karin, Ph.D.	2010		
Laimonis Laimins, Ph.D.	2009	Executive Secretary - Florence E. Farber, Ph.D.	

Board of Scientific Advisors Extramural Programs

Chair - Robert C. Young	2009		
Paul M. Allen, Ph.D.	2011	Marc A. Kastner, Ph.D.	2012
Christine B. Ambrosone, Ph.D.	2012	Timothy J. Kinsella, M.D.	2012
Hoda A. Anton-Culver, Ph.D.	2008	Michael P. Link, M.D.	2007
Kirby I. Bland, M.D.	2009	Christopher J. Logothetis, M.D.	2009
Michael A. Caligiuri, M.D.	2012	Lynn M. Matrisian, Ph.D.	2007
Curt I. Civin, M.D.	2012	Kathleen H. Mooney, Ph.D., F.A.A.N., R.N	2010
Susan J. Curry, Ph.D.	2010	James L. Omel, M.D.	2012
William S. Dalton, M.D., Ph.D.	2010	Edith A. Perez, M.D.	2009
Raymond N. Dubois, M.D., Ph.D.	2007	Mack Roach III, M.D.	2007
H. Shelton Earp III, M.D.	2007	Richard L. Schilsky, M.D.	2008
Kathleen M. Foley, M.D.	2009	Robert D. Schreiber, Ph.D.	2010
Sanjiv S. Gambhir, M.D., Ph.D.	2009	Stuart L. Schreiber, Ph.D.	2012
Patricia A. Ganz, M.D.	2007	Ellen V. Sigal, Ph.D.	2009
Todd R. Golub, M.D.	2011	Margaret R. Spitz, M.D., M.P.H.	2007
Joe W. Gray, Ph.D.	2009	Bruce W. Stillman, Ph.D.	2012
William N. Hait, M.D., Ph.D.	2008	Victor J. Strecher, Ph.D. MPH	2012
Leland H. Hartwell, Ph.D.	2011	Jean Y. Wang, Ph.D.	2011
James R. Heath, Ph.D.	2010	Jane C. Weeks, M.D.	2009
Mary J. Hendrix, Ph.D.	2009	Irving L. Weissman, M.D.	2012
Leroy E. Hood, Ph.D., M.D.	2009	James K. V. Willson, M.D.	2011
Hedvig Hricak, M.D., Ph.D.	2007		
Eric Hunter, Ph.D.	2007		
Paula K. Kim	2007	Executive Secretary - Paulette S. Gray, Ph.D.	

President's Cancer Panel

LaSalle D. Leffall, Jr. M.D., F.A.C.S. 2010

Chairman
Charles R. Drew Professor of Surgery
Howard University Hospital
2041 Georgia Avenue, NW
Suite 4000
Washington, DC 20060

Margaret L. Kripke, Ph.D. 2009

Executive Vice President/Chief Academic Officer
University of Texas
M.D. Anderson Cancer Center
Unit 113
1515 Holcombe Boulevard
Houston, TX 77030

Lance E. Armstrong 2008

Founder, Lance Armstrong Foundation
1221 South MoPac Expressway
Suite 320
Austin, TX 78746

Abby B. Sandler, Ph.D.

Executive Secretary
6116 Executive Blvd.
Suite 212, MSC 8349
Bethesda, MD 20892-8349

Executive Committee Members

John E. Niederhuber, M.D.

Director

Peter Greenwald, M.D., Dr.Ph

Director, Division of Cancer Prevention

Anna D. Barker, Ph.D.

Deputy Director for Advanced Technologies and
Strategic Partnerships

Ernest T. Hawk, M.D., M.P.H.

Director, Office of Centers, Training
and Resources

Kenneth H. Buetow, Ph.D.

Director, Center for Biomedical Informatics
and Information Technology

Alan S. Rabson, M.D.

Deputy Director

Robert T. Croyle, Ph.D.

Director, Division of Cancer Control and
Population Sciences

Lawrence J. Ray, J.D.

Deputy Director for Management

James H. Doroshow, M.D.

Director, Division of Cancer Treatment
and Diagnosis

Dinah S. Singer, Ph.D.

Director, Division of Cancer Biology

Joseph F. Fraumeni, Jr., M.D.

Director, Division of Cancer Epidemiology and
Genetics

Sanya A. Springfield, Ph.D.

Director, Center to Reduce
Cancer Health Disparities

Paulette S. Gray, Ph.D.

Director, Division of Extramural Activities

Robert H. Wiltrout, Ph.D.

Director, Center for Cancer Research

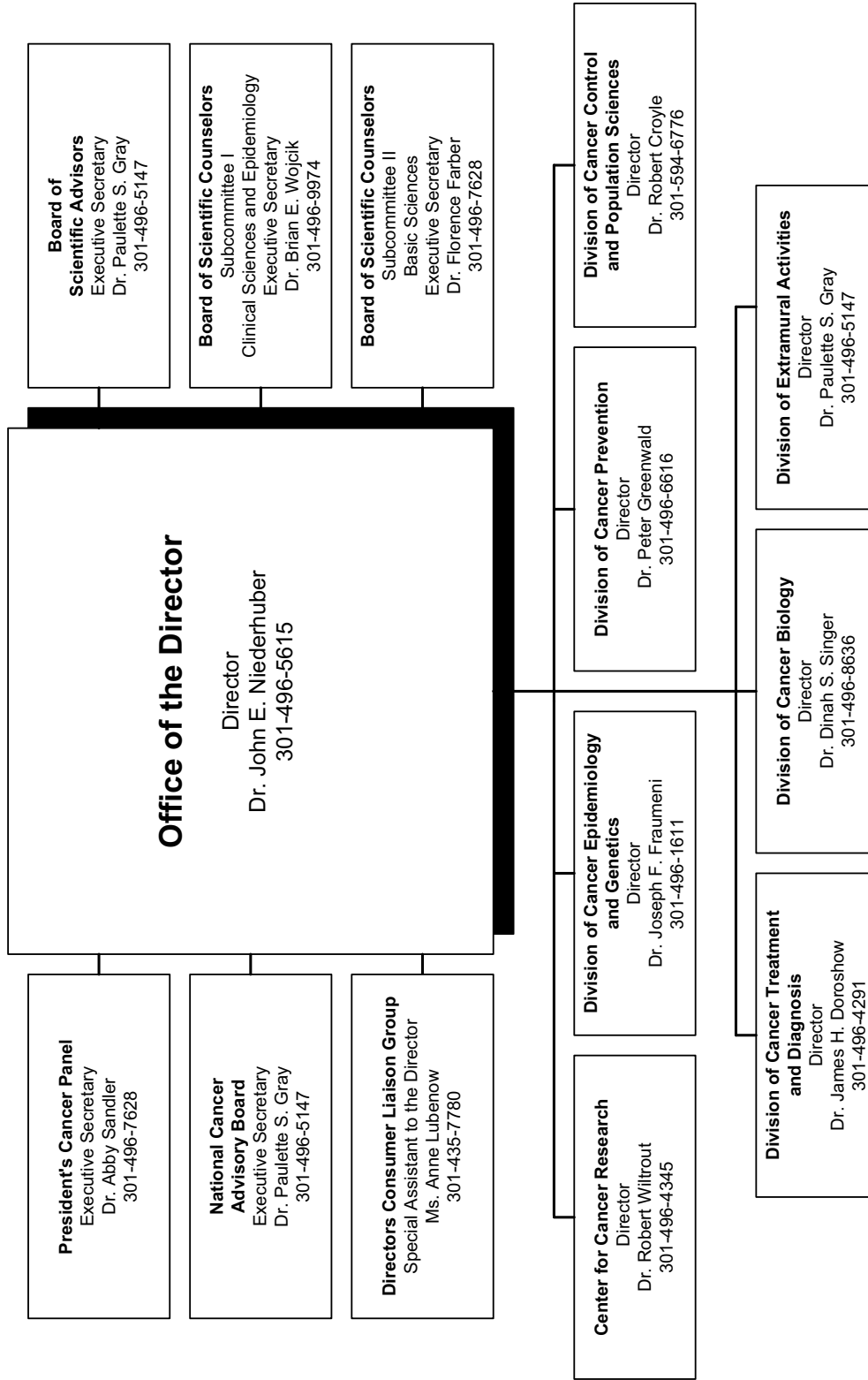
Joy Wiszneauckas, M.B.A

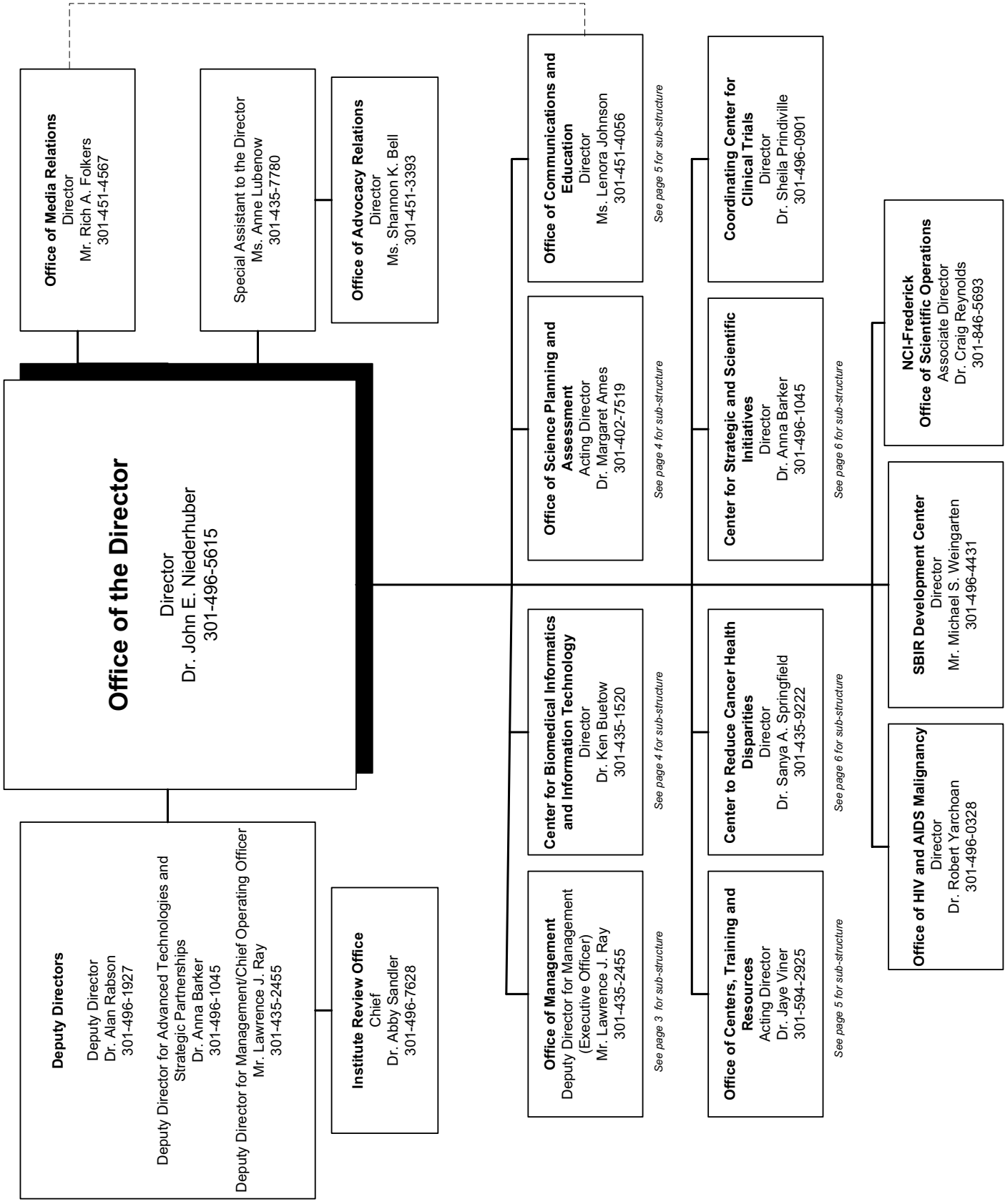
Executive Secretary

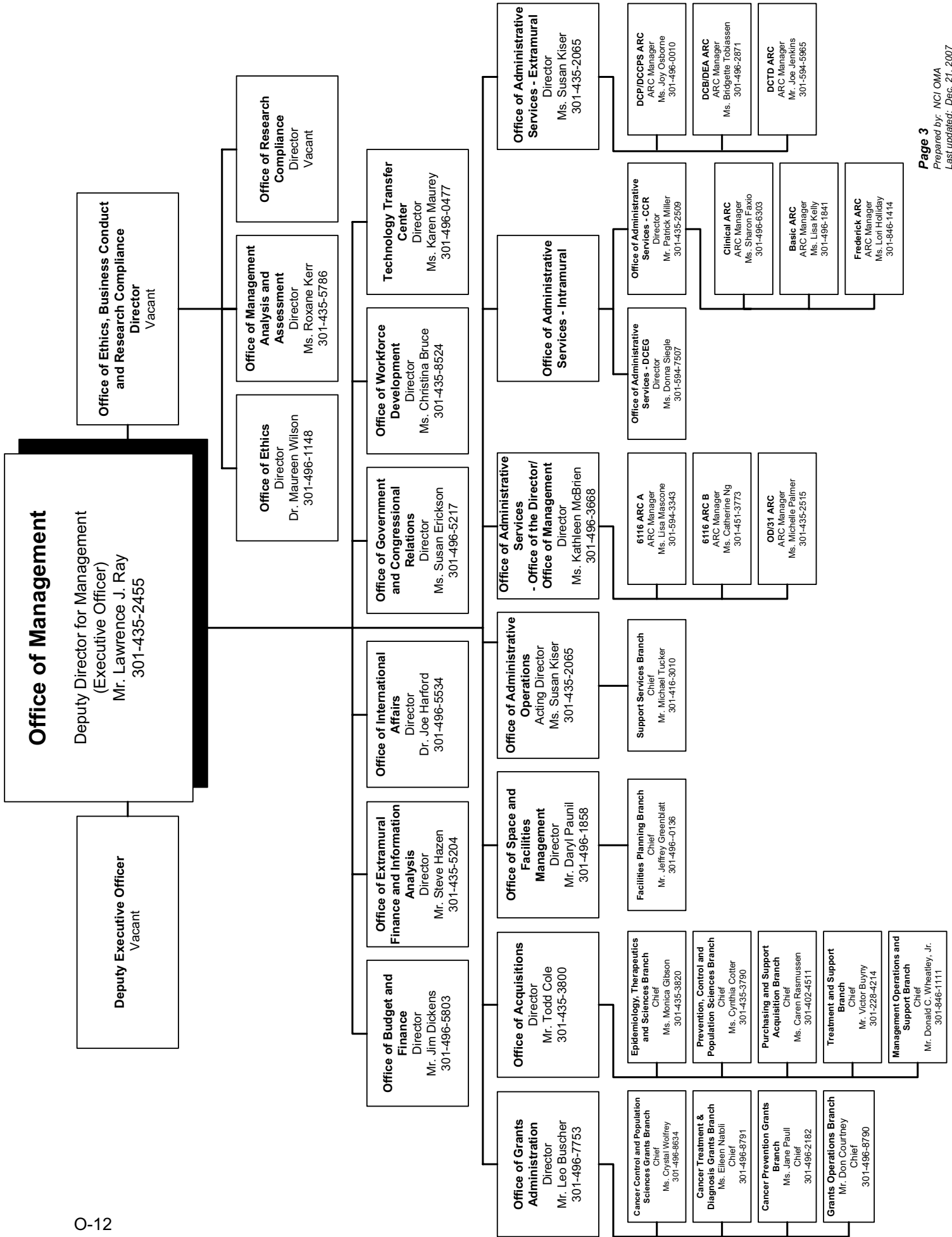
NCI Director's Consumer Liaison Group

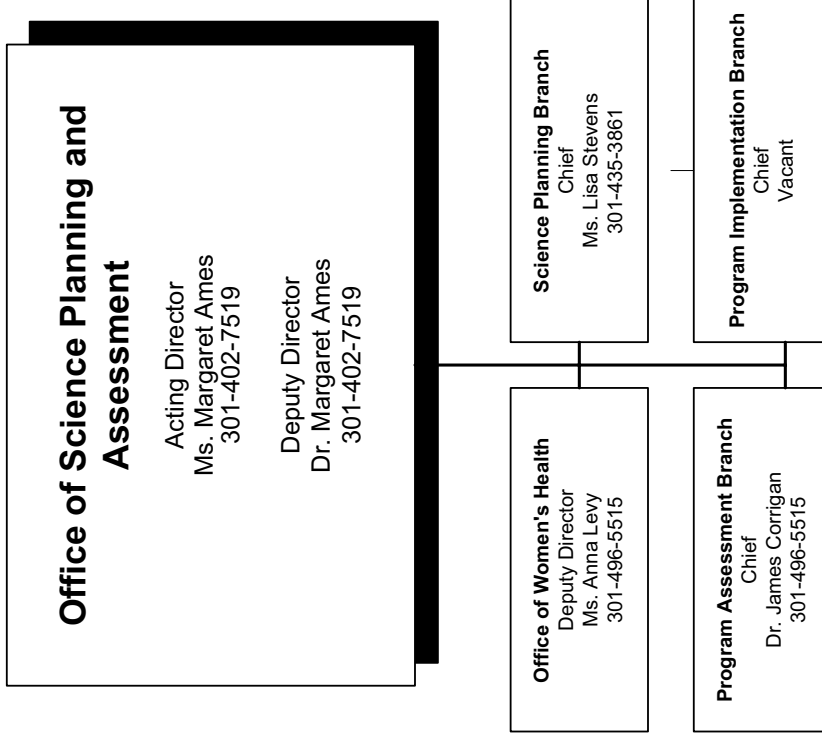
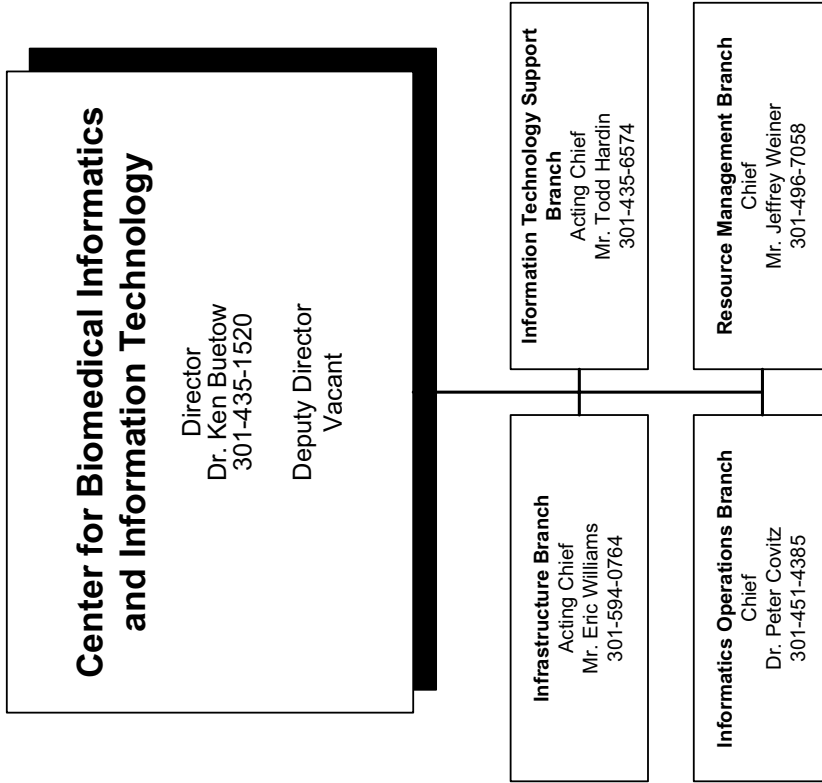
Mr. Doug Ulman, Chair Lance Armstrong Foundation	2008	Ms. Kelly L. Cotter CureSearch National Childhood Cancer Foundation	2008
Dr. Beverly Laird, Vice Chair American Cancer Society Komen Breast Cancer Foundation	2008	Marie E. Dahlstrom De La Mano Frente Al Cancer: Latino Cancer Coalition	2011
Ms. Margaret L. Anthony Yul Brynner Head and Neck Foundation	2008	Ms. Nancy Davenport-Ennis Patient Advocate Foundation	2008
Mr. William Bro Kidney Cancer Association	2008	Everett E. Dodson Prostate NET	2011
Dr. Grace L. Butler Hope through GRACE, Inc.	2008	Joyce Wilcox Graff VHL Family Alliance	2011
Ms. Lourie Campos Community Health Partnership	2008	Alan M. Kaye National Cervical Cancer Coalition	2008
Ms. Yvette Colon American Pain Foundation	2008	Ms. Celeste Whitewolf Native People's Circle of Hope	2008
		Col. (Ret.) James Williams Pennsylvania Prostate Cancer Coalition	2008
		Arlene Wahwasuck Four Tribes Women's Wellness Coalition	2011
		Ms. Barbara H. Guest, Executive Secretary Director's Consumer Liaison Group Office of Advocacy Relations National Cancer Institute 6116 Executive Boulevard, Suite 220 Bethesda, MD 20892	

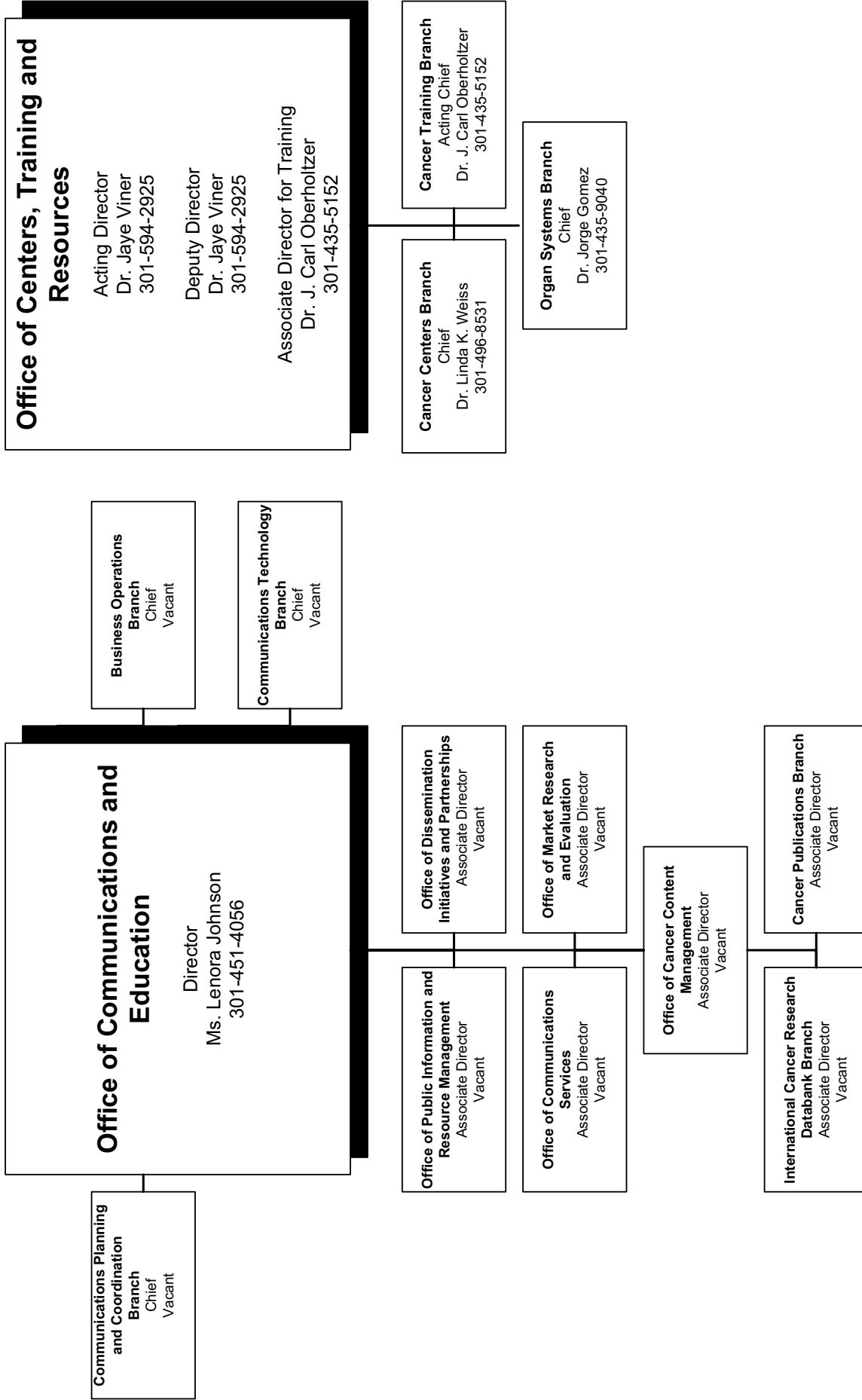
National Cancer Institute











Center to Reduce Cancer Health Disparities
Director
Dr. Sanya Springfield
301-496-8589
Acting Deputy Director
Ms. Jane Daye
301-594-5946

Disparities Research Branch
Chief
Dr. Ken Chu
301-435-9213

Diversity Training Branch
Acting Chief
Dr. Nelson Aguila
301-435-9050

Center for Strategic and Scientific Initiatives
Director
Dr. Anna Barker
301-496-1045

Office of Cancer Genomics
Director
Dr. Daniela S. Gerhard
301-451-8027

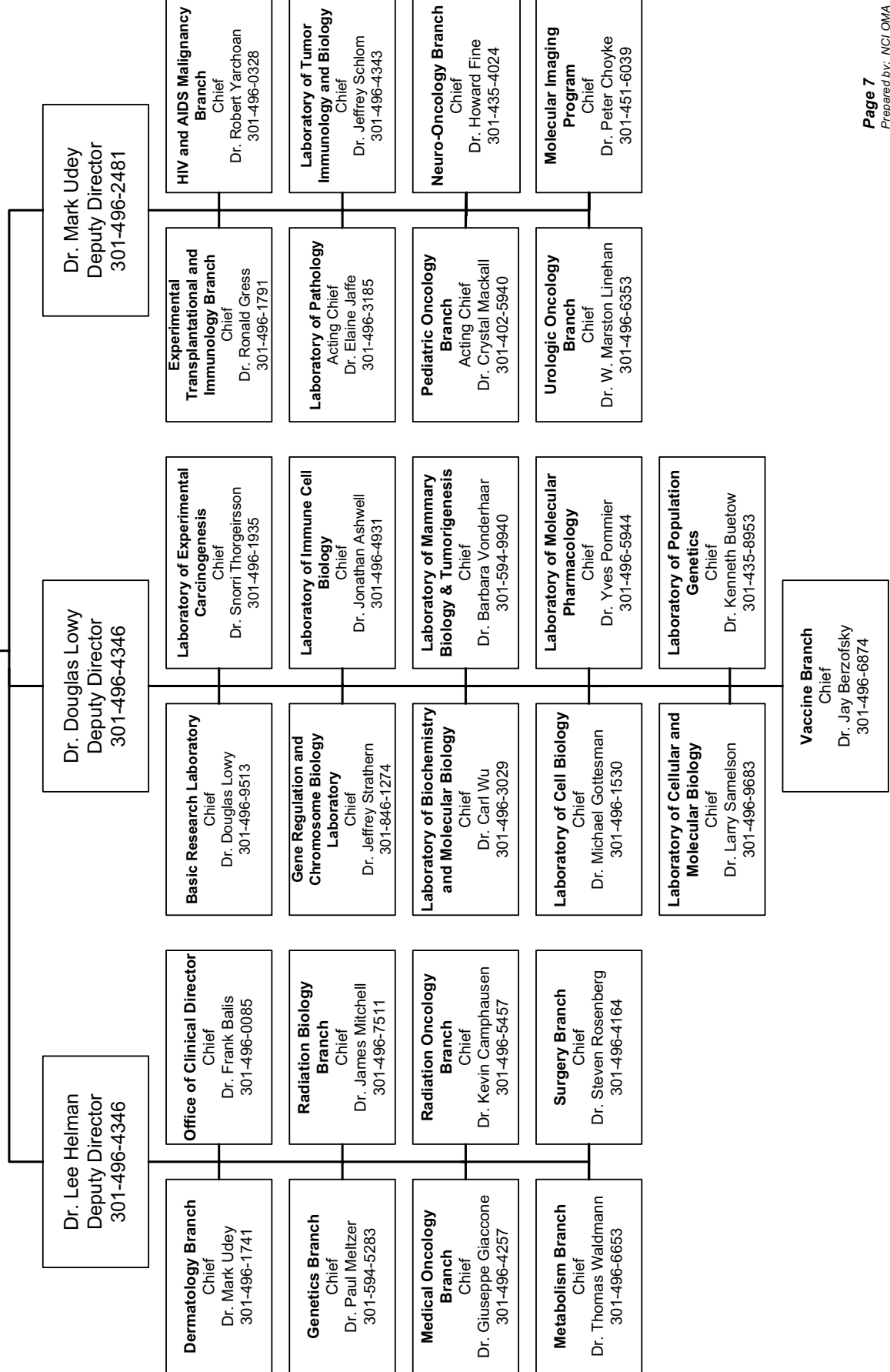
Office of Technology and Industrial Relations
Acting Director
Dr. Carolyn C. Compton
301-496-1550

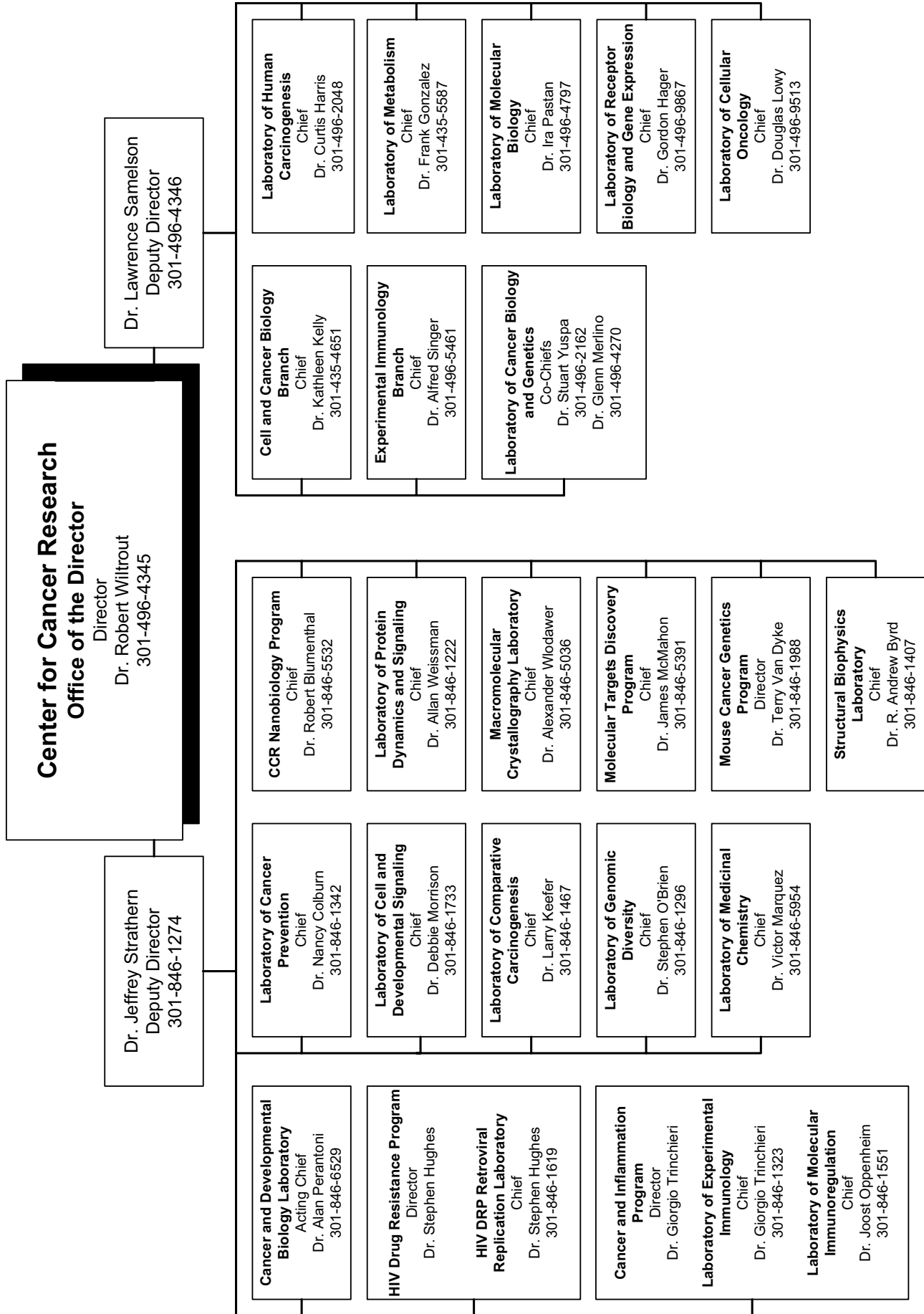
Office of Biorepositories and Biospecimen Research
Director
Dr. Carolyn C. Compton
301-496-1550

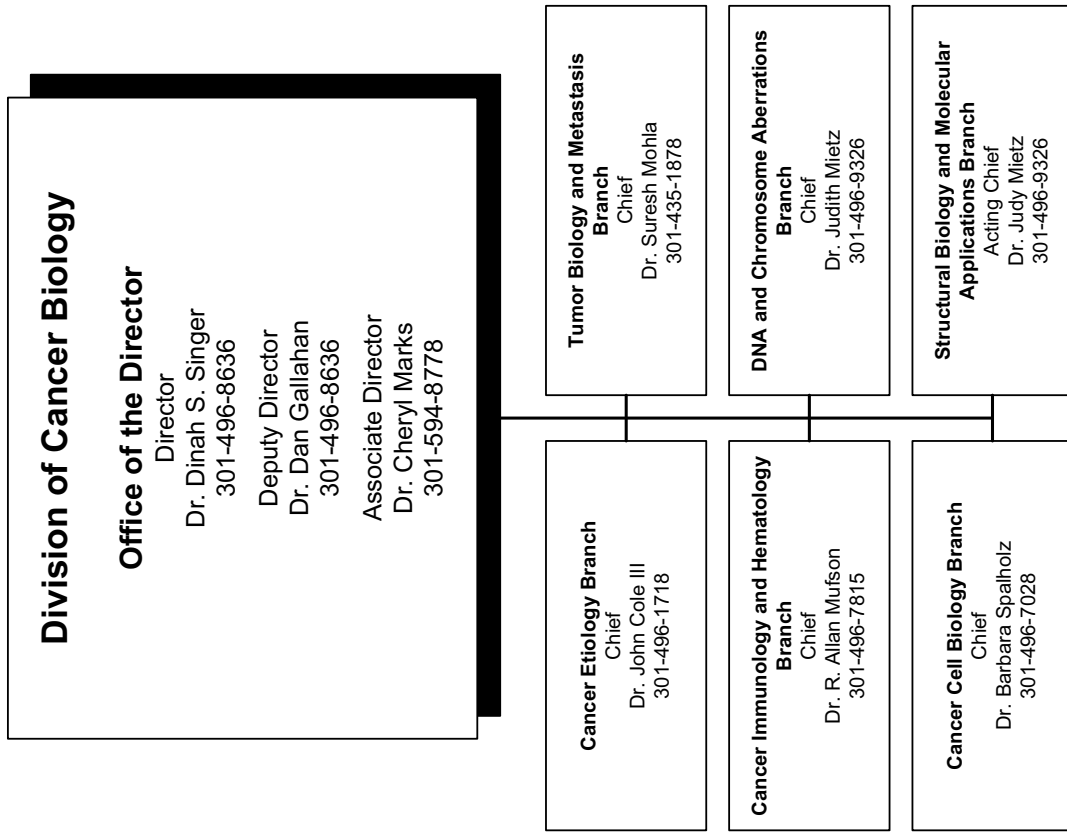
Office of Nanotechnology
Director
Dr. Piotr Grodzinski
301-496-1550

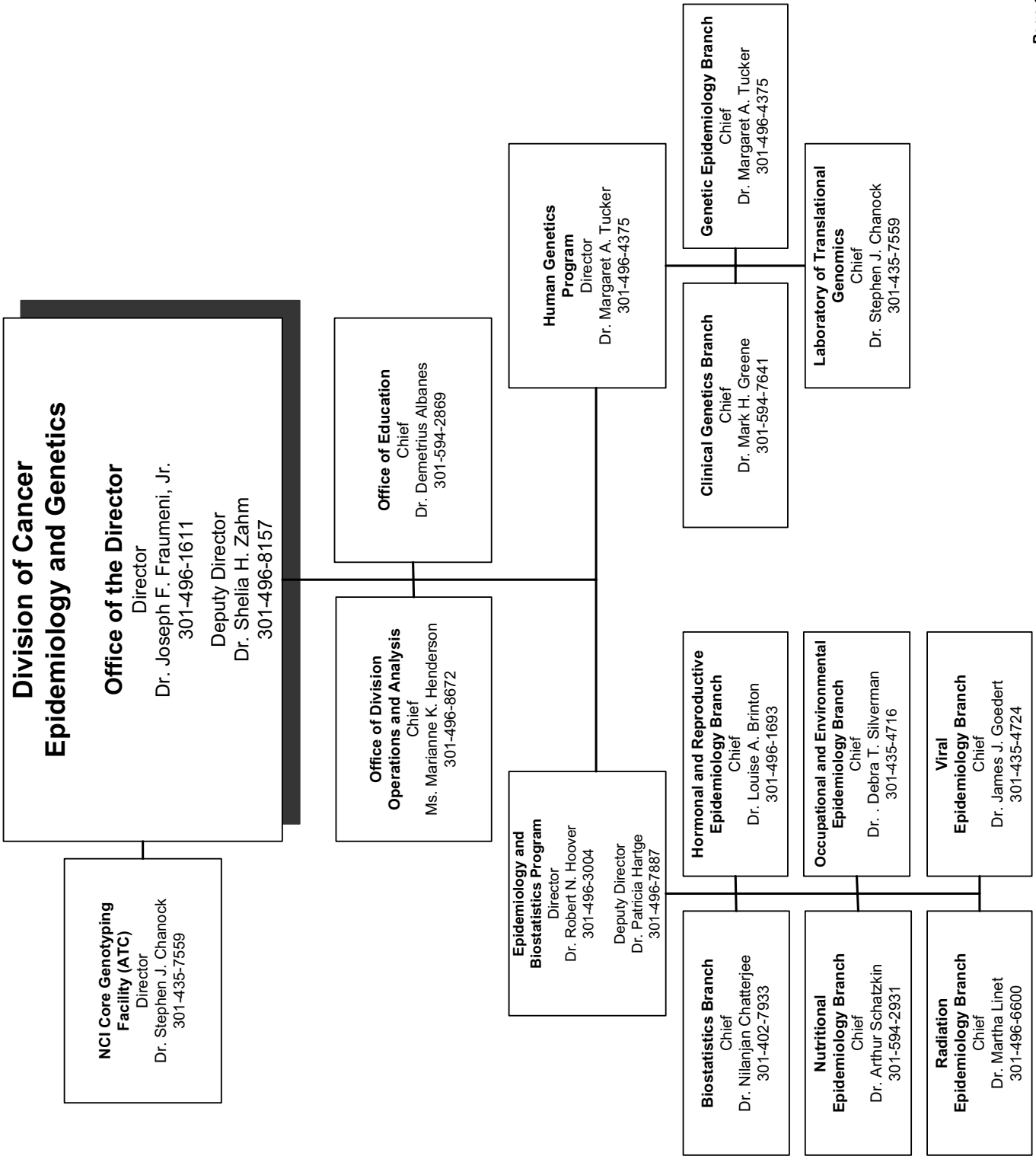
**Center for Cancer Research
Office of the Director**

Director
Dr. Robert Wiltrott
301-496-4345









Division of Cancer Prevention

Office of the Director

Director
Dr. Peter Greenwald
301-496-6616

Acting Deputy Director
Dr. Leslie G. Ford
301-496-9569

Associate Director for Clinical Research
Dr. Leslie Ford
301-496-0265

Breast & Gynecologic Cancer Research Group
Chief
Dr. Karen A. Johnson
301-496-8526

Prostate & Urologic Cancer Research Group
Chief
Dr. Howard Parnes
301-594-0920

Lung & Upper Aerodigestive Cancer Research Group
Chief
Dr. Eva Szabo
301-435-1595

Gastrointestinal & Other Cancer Research Group
Acting Chief
Dr. Asad Umar
301-594-2684

Chemopreventive Agent Development Research Group
Chief
Dr. James Crowell
301-496-8563

Community Oncology and Prevention Trials Research Group
Chief
Dr. Lori M. Minasian
301-496-8541

Nutritional Science Research Group
Chief
Dr. John A. Milner
301-496-8573

Basic Prevention Science Research Group
Acting Chief
Dr. John Gohagan
301-496-3982

Cancer Biomarkers Research Group
Chief
Dr. Sudhir Srivastava
301-435-1594

Early Detection Research Group
Chief
Dr. Christine Berg
301-496-8544

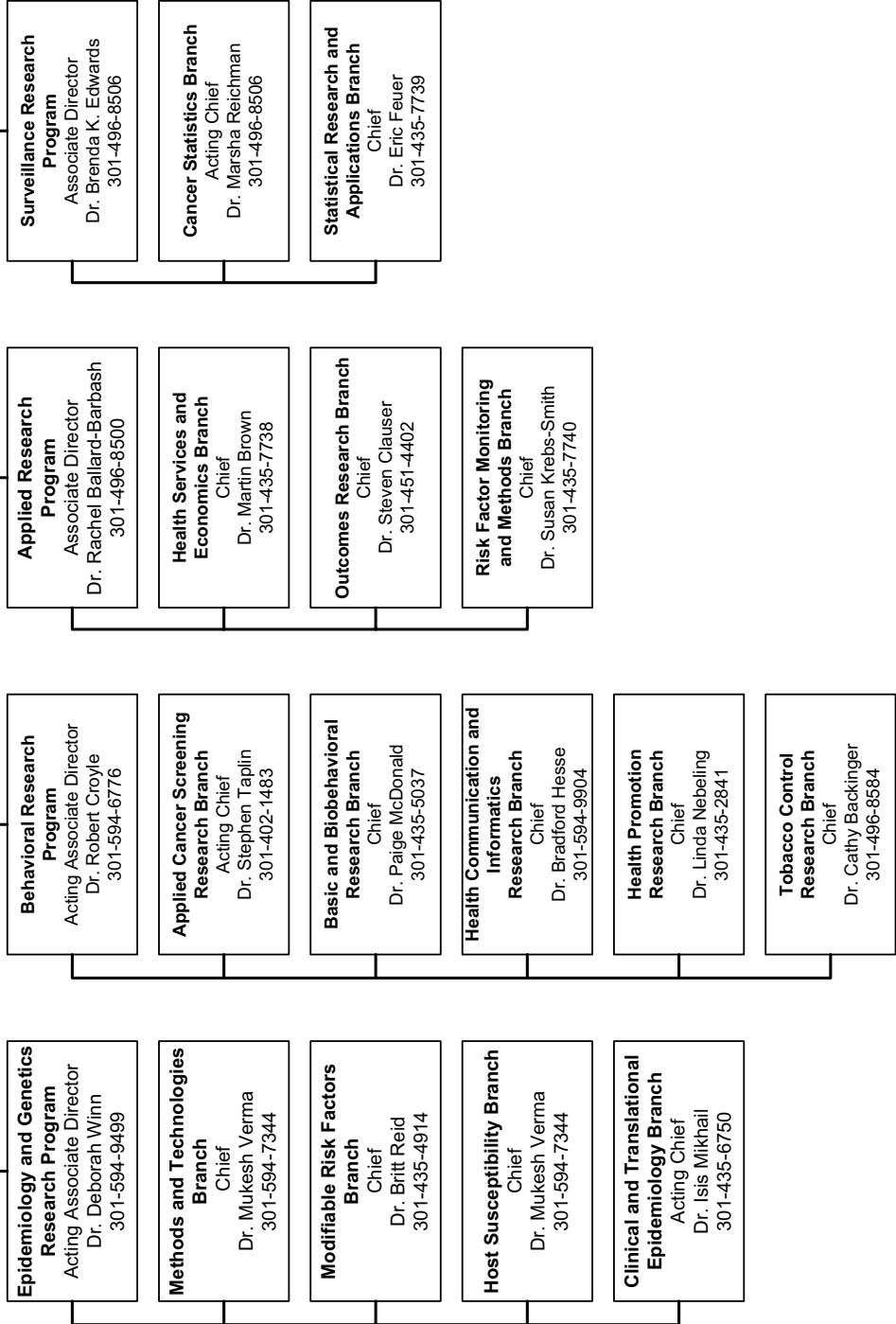
Biometry Research Group
Chief
Dr. Phillip C. Prorok
301-496-8556

**Division of Cancer Control and
Population Sciences**

Office of the Director
Director
Dr. Robert Croyle
301-594-6776

Deputy Director for
Research Dissemination and Diffusion
Dr. Jon F. Kerner
301-594-7294

**Office of Cancer
Survivorship**
Director
Dr. Julia H. Rowland
301-402-8186



Division of Cancer Treatment and Diagnosis

Office of the Director

Director
 Dr. James H. Doroshow
 301-496-4291
 Deputy Director
 Dr. Joseph Tomaszewski
 301-496-6711

Biometrics Research Branch
 Chief
 Dr. Richard Simon
 301-496-0975

**Office of Cancer
 Complementary and
 Alternative Medicine**
 Director
 Dr. Jeffrey White
 301-435-7980

**Radiation Research
 Program**
 Associate Director
 Dr. C. Norman Coleman
 301-496-6111

**Radiotherapy
 Development Branch**
 Chief
 Dr. Helen B. Stone
 301-496-3089

**Molecular Radiation
 Therapeutics Branch**
 Chief
 Vacant
 301-496-9360

**Clinical Radiation
 Oncology Branch**
 Chief
 Dr. Bhadransain Vikram
 301-496-6111

**Cancer Therapy
 Evaluation Program**
 Acting Associate Director
 Dr. Jeffrey Abrams
 301-496-6138

**Investigational
 Drug Branch**
 Chief
 Dr. James Zwiebel
 301-496-1196

**Clinical Investigations
 Branch**
 Acting Chief
 Dr. Margaret Mooney
 301-496-2522

**Pharmaceutical
 Management Branch**
 Chief
 Mr. Charles Hall
 301-496-5725

**Regulatory Affairs
 Branch**
 Acting Chief
 Dr. Jan Casadei
 301-496-7912

**Clinical Trials Monitoring
 Branch**
 Chief
 Ms. Joan Mauer
 301-496-0510

**Clinical Grants and
 Contracts Branch**
 Chief
 Dr. Roy Wu
 301-496-8866

**Developmental
 Therapeutics Program**
 Associate Director
 Dr. Jerry M. Collins
 301-496-8720

**Screening Technologies
 Branch**
 Chief
 Dr. Robert Shoemaker
 301-846-7276

**Natural Products
 Branch**
 Chief
 Dr. David Newman
 301-846-5387

**Drug Synthesis and
 Chemistry Branch**
 Chief
 Dr. Ven Narayanan
 301-496-8795

**Grants & Contracts
 Operations Branch**
 Chief
 Dr. Mary Wolpert-DeFilippes
 301-496-8783

**Pharmaceutical
 Resources Branch**
 Chief
 Dr. Rao Vishnuvajjala
 301-496-8780

**Information Technology
 Branch**
 Chief
 Dr. Dan Zaharevitz
 301-496-8747

**Biological Testing
 Branch**
 Chief
 Dr. Melinda Hollingshead
 301-846-5065

**Biological Resources
 Branch**
 Chief
 Dr. Stephen Creekmore
 301-846-1098

**Toxicology and
 Pharmacology
 Branch**
 Chief
 Dr. Joseph Tomaszewski
 301-496-8777

**Cancer Diagnosis
 Program**
 Associate Director
 Dr. Sheila Taube
 301-496-8639

**Diagnostics Evaluation
 Branch**
 Chief
 Dr. John Jessup
 301-496-1591

**Resources Development
 Branch**
 Chief
 Dr. Irina Lubensky
 301-496-7147

**Diagnostic Biomarkers
 and Technology Branch**
 Chief
 Dr. James Jacobson
 301-402-4185

**Cancer Imaging
 Program**
 Acting Associate Director
 Dr. James L. Tatum
 301-594-8966

**Diagnostic Imaging
 Branch**
 Chief
 Dr. C. Carl Jaffe
 301-451-2669

**Molecular Imaging
 Branch**
 Chief
 Dr. James L. Tatum
 301-594-8966

**Image-Guided
 Intervention Branch**
 Acting Chief
 Dr. Keyvan Farahani
 301-451-2651

**Imaging Technology
 Development Branch**
 Chief
 Dr. Laurence Clarke
 301-435-9190

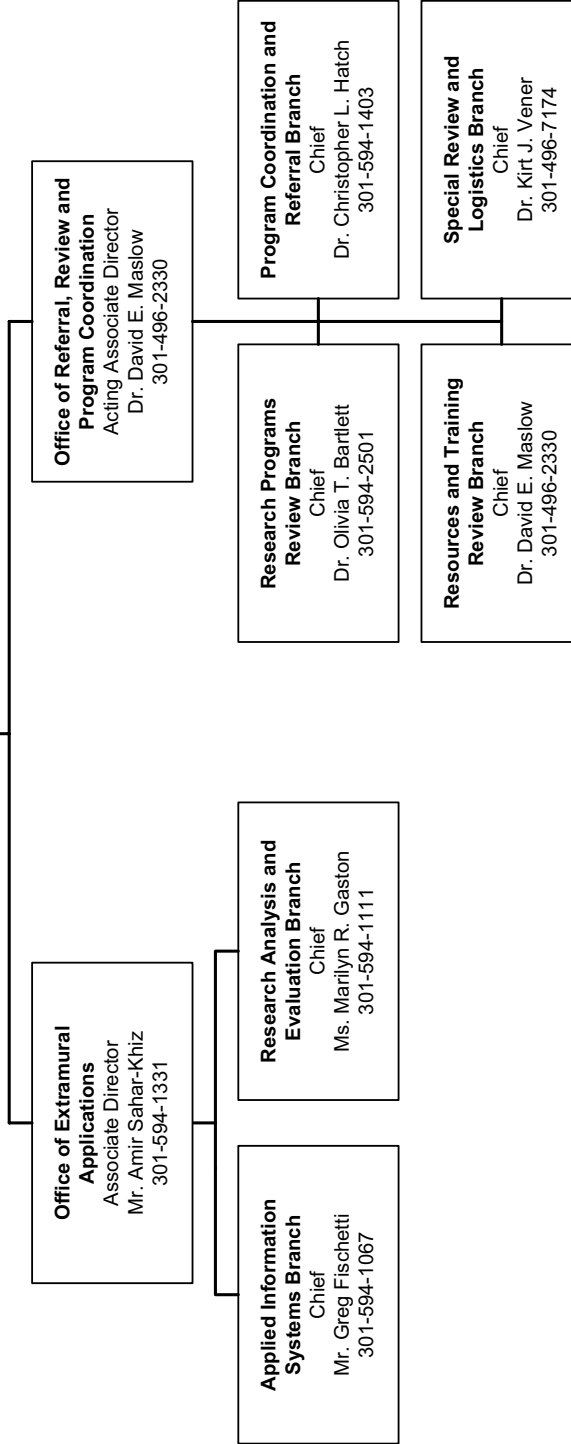
Division of Extramural Activities

Office of the Director

Director
Dr. Paulette S. Gray
301-496-5147

Acting Deputy Director
Dr. Paulette S. Gray
301-496-5147

Assistant Director
Dr. Cedric W. Long
301-496-9138



Links to Cancer Statistics

SOURCES:

2007 Report to the Nation on the Status of Cancer, 1975-2004

Annual Report to the Nation on the Status of Cancer, 1975-2004 provides information related to incidence, death rates, and trends in the United States. Contains a special feature on cancer among American Indians and Alaska natives.

<http://www.cancer.gov/newscenter/pressreleases/ReportNation2007Release>

Fast Stats

Interactive tool providing tables, charts, and graphs with information related to incidence, mortality, survival and stage, prevalence, and lifetime risk (probability of developing or dying from cancer).

<http://seer.cancer.gov/faststats/>

SEER Cancer Statistics Review, 1975-2004

Annually updated tables and graphs displaying cancer statistics by cancer site, year of diagnosis, age, race, sex, and geography, diagnosed between 1975 and 2004. Searchable cancer statistics related to incidence, mortality, survival, prevalence, and lifetime risk.

http://seer.cancer.gov/csr/1975_2004/

Cancer Stat Fact Sheets

Collection of statistical summaries for a number of common cancer types, with information related to incidence, mortality, survival, stage, prevalence, and lifetime risk.

<http://seer.cancer.gov/statfacts/>

REPORTS:

Costs of Cancer Care, 1963-2004

http://progressreport.cancer.gov/doc_detail.asp?pid=1&did=2005&chid=25&coid=226&mid=

Relationship of Cancer to the Leading Causes of Death in the United States, 1975 and 2004

http://seer.cancer.gov/csr/1975_2004/results_merged/topic_lead_cod.pdf

Estimated New Cancer Cases and Deaths for 2007

http://seer.cancer.gov/csr/1975_2004/results_single/sect_01_table.01.pdf

Person-Years of Life Lost Due to Cancer and Average Years of Life Lost Per Person Dying of Cancer, All Races, Both Sexes, 2004

http://seer.cancer.gov/csr/1975_2004/results_merged/topic_year_lost.pdf

Incidence, Mortality, and Five-Year Relative Survival Rates by Cancer Site

http://seer.cancer.gov/csr/1975_2004/results_merged/topic_graph_surv_rates.pdf

Annual Percent Change in Incidence and Mortality Rates, 1995-2004

http://seer.cancer.gov/csr/1975_2004/results_merged/topic_graph_trends.pdf

SEER Age-Adjusted Incidence Rate and Annual Percent Change by Race and Sex, 1995-2004

http://seer.cancer.gov/csr/1975_2004/results_merged/topic_inc_trends.pdf

SEER Age-Adjusted Mortality Rate and Annual Percent Change by Race and Sex, 1995-2004

http://seer.cancer.gov/csr/1975_2004/results_merged/topic_mor_trends.pdf

Prevalence of Cancer: Estimated Number of Persons Diagnosed with Cancer, 5- and 29-Year Limited Duration

http://seer.cancer.gov/csr/1975_2004/results_merged/topic_prevcounts.pdf

Fiscal Year 2007 Budget

(Dollars in Thousands)

A. Actual Obligations Resulting From Appropriated Funds:

FY 2007 Appropriation	\$4,797,639
NIH Transfer for NIH Genes and Environmental Initiative	-5,015
Lapse	-9
Actual Obligations Subtotal	4,792,615

B. Reimbursable Obligations:

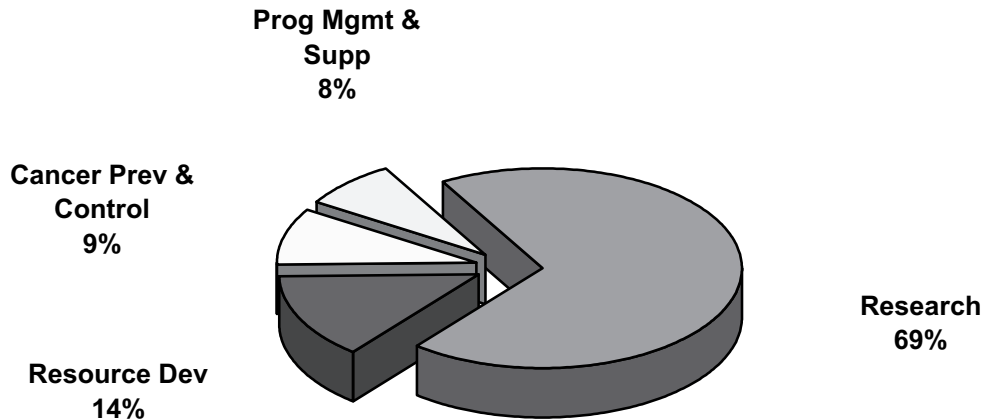
Reimbursements	15,081
-----------------------	---------------

C. Total NCI Obligations: \$4,807,696 *

*EXCLUDES projects awarded with Stamp Out Breast Cancer funds.

Program Structure Fiscal Year 2007

(Dollars in Thousands)

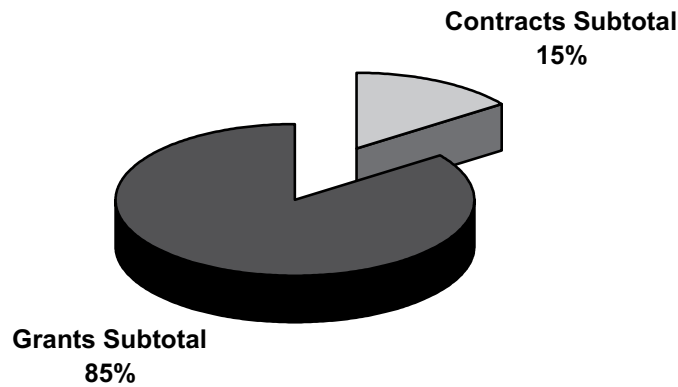


Budget Activity	Amount	Percent
Research:		
Cancer Causation	\$1,052,176	22.0%
Detection and Diagnosis Research	391,527	8.2%
Treatment Research	1,117,081	23.3%
Cancer Biology	752,982	15.7%
Subtotal Research	3,313,765	69.2%
Resource Development:		
Cancer Centers Support	472,627	9.9%
Research Manpower Development	180,269	3.8%
Buildings and Facilities	7,920	0.2%
Subtotal Resource Development	660,815	13.9%
Cancer Prevention and Control	450,876	9.4%
Program Management and Support	367,159	7.5%
*Total NCI	4,792,615	100.0%

*EXCLUDES projects awarded with Stamp Out Breast Cancer funds.

Extramural Funds Fiscal Year 2007

(Dollars in Thousands)



Mechanism	Amount	Percent
Contracts:		
R&D Contracts	416,850	11.2%
Cancer Control Contracts	133,740	3.6%
Buildings and Facilities	7,920	0.2%
Construction Contracts	0	0.0%
Subtotal Contracts	558,510	15.0%
Grants:		
Research Project Grants	2,111,814	56.6%
Cancer Centers/Specialized Centers/SPORES	471,669	12.6%
NRSA	68,223	1.8%
Other Research Grants	322,881	8.7%
Cancer Control Grants	200,126	5.4%
Construction Grants	0	0.0%
Subtotal Grants	3,174,713	85.0%
Total Extramural Funds	3,733,223	100.0%
Total Intramural/RMS/Control Inhouse	1,059,392	
*Total NCI	\$4,792,615	

*EXCLUDES projects awarded with Stamp Out Breast Cancer funds.

NCI Obligations by Mechanism, Fiscal Year 2007

(Dollars in Thousands)

		Number	Amount	% of Total	
Research Project Grants	Non-Competing	3,882	1,546,958	32.3%	
	Administrative Supplements	(259)	36,466	0.8%	
	Competing	1,312	434,713	9.1%	
	Subtotal, without SBIR/STTR Grants	5,194	2,018,137	42.1%	
	SBIR/STTR Grants	278	93,677	2.0%	
	Subtotal, Research Project Grants	5,472	2,111,814	44.1%	
Centers & SPORES	Cancer Centers Grants-P20/P30	63	273,184	5.7%	
	SPORES-P50	62	123,808	2.6%	
	Other Specialized Centers	42	74,677	1.6%	
	Subtotal, Centers	167	471,669	9.8%	
Other Research	Career Program			0.0%	
	Temin & Minority Mentored Awards-K01	126	17,831	0.4%	
	Estab. Inv. Award-K05	17	2,266	0.1%	
	Preventive Oncology-K07	99	13,269	0.3%	
	Clinical Investigator-K08	112	14,119	0.3%	
	Clinical Oncology-K12	16	9,472	0.2%	
	Transitional Career Development-K22	46	7,114	0.2%	
	Mentored Patient Oriented RCDA-K23	51	6,845	0.1%	
	Mid-Career Invest. & Patient Orient. Res-K24	16	2,491	0.1%	
	Mentored Quant. Res Career-K25	17	2,343	0.1%	
	Inst. Curr. Award-K30	5	1,462	0.0%	
	Pathway to Independence Awards-K99	20	2,383	0.1%	
	Subtotal, Career Program	525	79,595	1.7%	
	Cancer Education Program-R25	89	31,337	0.7%	
	Clinical Cooperative Groups-U10	66	148,193	3.1%	
	Minority Biomedical Support-S06	0	2,435	0.1%	
	Sci Eval (U09/T09)-Res Enhancement (SC1)	1	366	0.0%	
	Continuing Education	7	748	0.0%	
	Resource Grants-R24/U24	41	46,321	1.0%	
	Explor Coop Agreement-U56	15	10,409	0.2%	
	Conference Grants-R13	82	3,477	0.1%	
	Subtotal, Other Research Grants	826	322,881	6.7%	
	Subtotal, Research Grants		6,465	2,906,364	60.6%
	NRSA Fellowships	<i>Trainees:</i>	1,455	68,223	1.4%
	R&D Contracts	R&D Contracts	293	404,463	8.4%
		SBIR Contracts	45	12,387	0.3%
		Subtotal, Contracts	338	416,850	8.7%
Intramural Research	Program		582,037	12.1%	
	NIH Management Fund/SSF Assessment		124,142	2.6%	
	Subtotal, Intramural Research	<i>FTEs:</i>	1,811	706,179	14.7%
RMS	Research Mgmt and Support		166,996	3.5%	
	NIH Management Fund/SSF Assessment		21,687	0.5%	
	Subtotal, RMS	<i>FTEs:</i>	619	188,683	3.9%
Cancer Prevention and Control	Cancer Control Grants	207	200,126	4.2%	
	Cancer Control Contracts	132	133,740	2.8%	
	Inhouse	398	148,745	3.1%	
	NIH Management Fund/SSF Assessment		15,785	0.3%	
	Subtotal, Prevention and Control	<i>FTEs:</i>	398	498,396	10.4%
Buildings and Facilities Construction			7,920	0.2%	
*Total NCI	<i>FTEs:</i>	2,828	4,792,615	100.0%	

*EXCLUDES projects awarded with Stamp Out Breast Cancer funds.

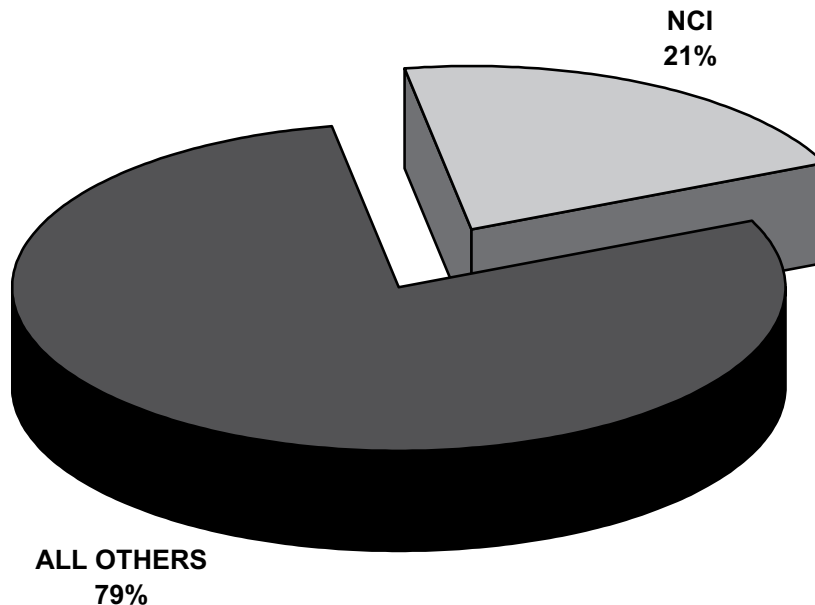
Division Obligations by Mechanism, Fiscal Year 2007

(Dollars in Thousands)

CCR	DCEG	DCTD	DCB	DCCPS	DCP	DEA	OD	Research Grants	Program Support
								1,488,237	58,721
								36,466	
								434,713	
								1,959,416	58,721
								93,677	
								2,053,093	58,721
		6,163					267,021		
							123,808		
			22,244	8,943			43,490		
		6,163	22,244	8,943			434,319		
							17,831		
							2,266		
							13,269		
							14,119		
							9,472		
							7,114		
							6,845		
							2,491		
							2,343		
							1,462		
							2,383		
							79,595		
							31,337		
								148,193	
								2,435	
								366	
								748	
								46,321	
								10,409	
								3,477	
							31,337	211,949	
		6,163	22,244	8,943			545,251	2,265,042	58,721
							68,223		
	18,383	104,985	1,417	31,517			189,828		58,333
	389	3,395		4,038	2,822		1,743		
	18,772	108,380	1,417	35,555	2,822		191,571		58,333
382,750	55,187	363					120,787		22,950
									124,142
382,750	55,187	363					120,787		147,092
		33,430	8,420			24,457	81,072		19,617
									21,687
		33,430	8,420			24,457	81,072		41,304
		20,989		33,386	116,631		29,120		
	6,138	6,227		32,407	67,348		21,620		
40	6,373	6,837		27,545	18,875		78,172		10,903
									15,785
40	12,511	34,053		93,338	202,854		128,912		26,688
							7,920		
382,790	86,470	182,389	32,081	137,836	205,676	24,457	1,143,736	2,265,042	332,138

NIH Management Fund, Service & Supply Fund, and GSA Rent Fiscal Year 2007

(Dollars in Thousands)



DISTRIBUTION OF NCI PAYMENT	Amount	Share of NCI
Clinical Center	\$91,492	56.6%
Center for Scientific Review	9,310	5.8%
Center for Information Technology	7,524	4.7%
Service and Supply Fund	13,829	8.6%
Other Research Services	14,180	8.8%
Other OD	25,279	15.6%
*Total Management Fund and SSF	161,614	100.0%
Other NIH Institutes Management Fund and SSF	602,278	
Total NIH Management Fund and SSF	\$763,892	

*Excludes GSA Rental Payments for Space which totaled \$56,645 in FY 2007

The Management Fund provides for the financing of certain common research and administrative support activities which are required in the operations of NIH:

Clinical Center: Admissions and followup, anesthesiology, diagnostic x-ray, nuclear medicine, clinical pathology, blood bank, rehabilitation medicine, pharmacy, medical records, nursing services, patient nutrition service, housekeeping services, laundry, and social work

Center for Scientific Review: Initial scientific review of applications, assignment of research grant applications to institutes

Center for Information Technology: Research and development program in which concepts and methods of computer science are applied to biomedical problems

GSA Rental Payments for Space: All building rental, including utilities and guard services.

Other Research Services: Procurement, safety, engineering, biomedical engineering, veterinary resources, and library

Service & Supply Fund: Animal support, collaborative research, conference services, hazardous waste management, interpreting services, library, occupational health and safety, property management support and radiation safety

Special Sources of Funds

CRADAs

As a result of the Federal Technology Transfer Act of 1986 (PL 99-502), government laboratories are authorized to enter into Cooperative Research and Development Agreements (CRADAs) with private sector entities. Licensing agreements are usually incorporated into the CRADA document which addresses patent rights attributable to research supported under the CRADA.

NCI CRADA Receipts Deposited to the U.S. Treasury

(Dollars in Thousands)

Fiscal Year	Carryover from Prior Year	Collections	Obligations
1996	3,864	2,017	1,394
1997	4,486	13,378	6,639
1998	11,217	5,351	7,266
1999	9,302	3,645	4,707
2000	8,240	2,717	4,618
2001	6,339	5,295	2,770
2002	8,864	5,048	2,380
2003	11,533	5,221	5,361
2004	11,351	5,080	5,469
2005	10,962	6,858	4,253
2006	13,567	6,142	7,125
2007	12,584	9,410	8,360

Royalty Income

NCI retains a portion of the royalty income generated by the patents related to NCI-funded research. A major portion of this royalty income is used to reward employees of the laboratory, further scientific exchange and for education and training in accordance with the terms of the Federal Technology Transfer Act (PL 99-502). Receipts are also used to support costs associated with processing and collecting royalty income and for technology transfer efforts in NCI and NIH.

NCI Royalty Income Funding History

(Dollars in Thousands)

Years	Collections*	Inventor Payments	Other
1996/1997	13,598	2,175	11,423
1997/1998	9,814	2,321	7,493
1998/1999	22,716	5,084	17,632
1999/2000	21,160	4,695	16,465
2000/2001	37,040	4,811	32,229
2001/2003	27,443	6,210	21,233
2002/2004	42,565	3,961	38,604
2003/2005	27,271	5,262	22,009
2004/2006	26,923	4,950	21,973
2005/2007	34,086	5,745	28,341
**2006/2008	29,811	5,854	23,957
**2007/2009	36,344	4,400	31,944

*Does not include assessments by NIH.

**2006/2008 and 2007/2009 collections and payments are estimates.

Stamp Out Breast Cancer

The Stamp Out Breast Cancer Act (PL 105-41) was established in August 1997 and extended in July 2000 (PL 106-253) and again in November 2005 (PL 109-100). This act allows postal customers to contribute to funding for breast cancer research through their voluntary purchases of special rate postage stamps from the U.S. Postal Service. The Act required the USPS to transfer 70% to NIH and 30% to the DOD of the funds collected above the postage costs and administrative costs. As of October 2007, NCI has received \$38,237,857. NCI has used these funds for research projects directed towards breast cancer research. Thus far, four major programs have been funded -- the "Insight Awards to Stamp Out Breast Cancer," the "Breast Cancer Research Stamp Exception Program," the "Breast Cancer Premalignancy Program" and a clinical trial to determine the risk of breast cancer recurrence. In FY 2007, \$1.673 million was obligated on Breast Cancer Stamp Fund programs.

Funding for Various Research Areas

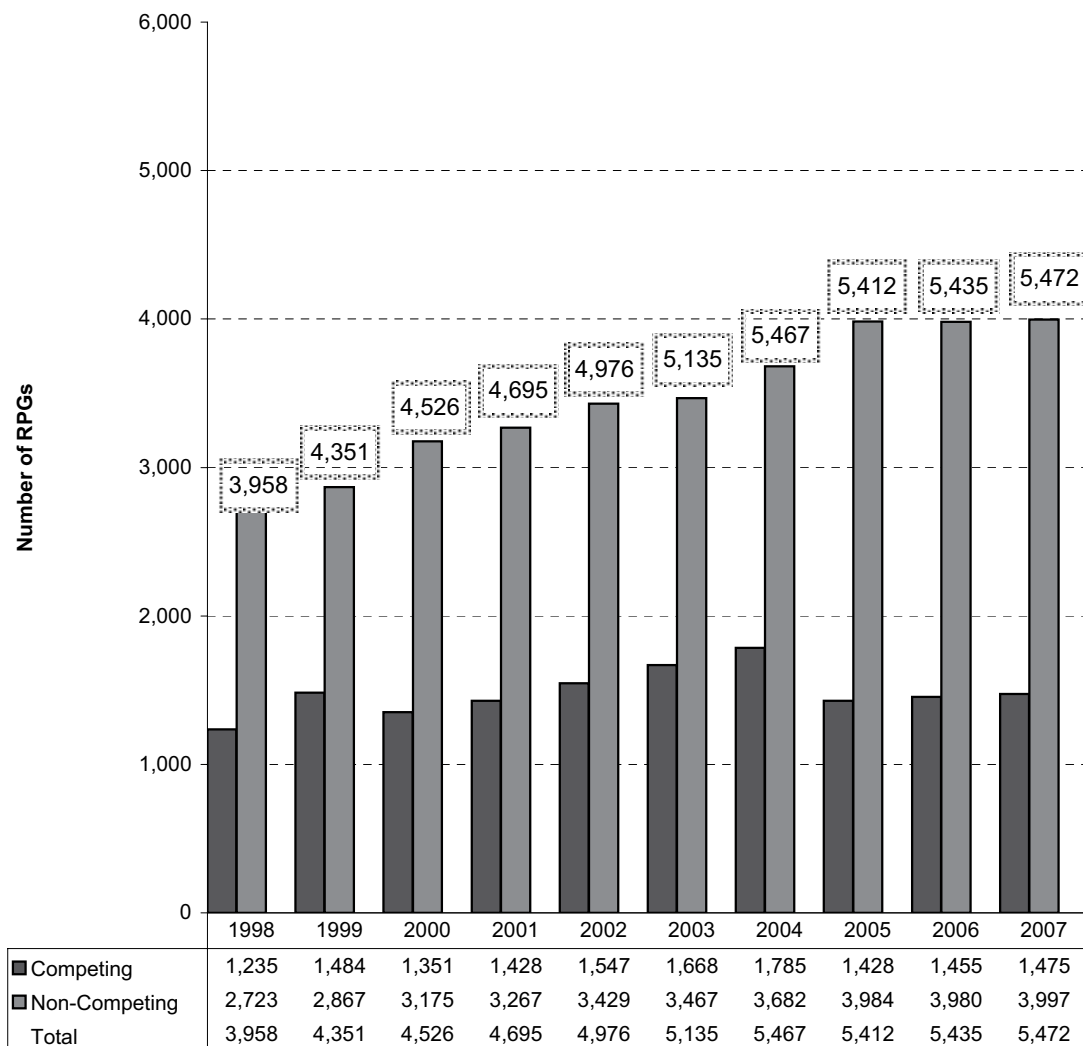
(Dollars in Millions)

The National Cancer Institute reports how appropriated funds are spent in a number of different categories or classifications including specific cancer sites, cancer types, diseases related to cancer, as well as types of research mechanisms. The table below represents funding levels for frequently requested research areas. These research areas do not represent the entire NCI research portfolio. Funding for these areas can overlap and do not add to the total NCI budget. For example, dollars for a clinical trial on breast cancer research would be included in both the Breast Cancer and the Clinical Trials lines in the table below. Similarly, a basic cancer research project may be relevant to cervical, uterine and ovarian cancers and relevant funding would be included in the figures for all three sites.

Disease Area	2003 Actual	2004 Actual	2005 Actual	2006 Actual	2007 Actual
Total NCI Budget	\$4,592.3	\$4,723.9	\$4,794.7	\$4,747.2	\$4,792.6
AIDS	263.4	267.0	265.9	253.7	253.7
Brain & CNS	111.5	132.3	124.9	130.3	148.2
Breast Cancer	548.7	566.2	560.1	584.7	572.4
Cervical Cancer	79.0	79.0	81.7	83.3	82.4
Clinical Trials	799.5	800.0	781.8	822.3	843.7
Colorectal Cancer	261.6	262.0	253.1	244.1	258.4
Head and Neck Cancers	77.7	88.2	89.5	71.3	66.2
Hodgkins Disease	16.5	17.4	17.2	20.9	16.5
Leukemia	200.9	214.7	220.6	223.5	205.5
Liver Cancer	63.7	63.0	60.5	62.7	67.7
Lung Cancer	273.5	276.5	266.1	242.9	226.9
Melanoma	90.7	94.9	102.9	108.0	97.7
Multiple Myeloma	26.3	23.9	28.2	30.3	32.3
Non Hodgkin's Lymphoma	95.2	99.6	107.0	114.1	113.0
Ovarian Cancer	99.4	99.5	97.7	95.1	96.9
Pancreatic Cancer	42.3	52.7	66.7	74.2	73.3
Prostate Cancer	305.2	308.5	309.0	293.2	296.1
Stomach Cancer	13.4	11.6	11.0	11.5	12.0
Uterine Cancer	25.5	27.0	31.1	19.4	16.6

Research Project Grants Number of Awards Fiscal Years 1998-2007

Includes Small Business Innovation Research and Small Business Technology Transfer Awards



*EXCLUDES projects awarded with Stamp Out Breast Cancer Funds.

RPGs Requested and Awarded Fiscal Years 1998 - 2007

(Dollars in Thousands)

Fiscal Year	Type	Requested		Awarded		Success Rate	
		No.	Amt.	No.	Amt.		
1998	Competing	New	3,054	\$797,477	847	\$189,746	32.8%
		Renewal	697	283,562	382	137,764	
		Supplement	18	4,299	6	1,421	
		Subtotal	3,769	1,085,338	1,235	328,931	
	Non-Competing				2,723	901,845	
	Total			3,958	1,230,776		
1999	Competing	New	3,905	\$1,091,110	1,088	\$237,187	31.8%
		Renewal	757	340,075	390	145,623	
		Supplement	12	3,882	6	2,353	
		Subtotal	4,674	1,435,067	1,484	385,163	
	Non-Competing				2,867	976,610	
	Total			4,351	1,361,773		
2000	Competing	New	4,116	\$1,253,002	957	\$251,628	27.2%
		Renewal	839	435,207	392	175,908	
		Supplement	11	2,379	2	231	
		Subtotal	4,966	1,690,588	1,351	427,767	
	Non-Competing				3,175	1,100,234	
	Total			4,526	1,528,001		
2001	Competing	New	4,342	\$1,374,538	1,050	\$290,707	27.3%
		Renewal	856	437,455	372	173,722	
		Supplement	29	11,108	6	1,214	
		Subtotal	5,227	1,823,101	1,428	465,643	
	Non-Competing				3,267	1,213,098	
	Total			4,695	1,678,741		
2002	Competing	New	4,539	\$1,407,475	1,142	\$302,217	28.4%
		Renewal	861	404,789	384	186,087	
		Supplement	42	8,512	21	3,499	
		Subtotal	5,442	1,820,776	1,547	491,803	
	Non-Competing				3,429	1,356,138	
	Total			4,976	1,847,941		
2003	Competing	New	5,323	\$1,675,039	1,222	\$347,446	26.5%
		Renewal	955	447,122	441	194,084	
		Supplement	20	4,671	5	1,338	
		Subtotal	6,298	2,126,832	1,668	542,868	
	Non-Competing				3,467	1,457,144	
	Total			5,135	2,000,012		
2004	Competing	New	6558	\$2,045,451	1333	\$339,925	23.6%
		Renewal	988	518,201	445	210,790	
		Supplement	24	8,337	7	2,196	
		Subtotal	7570	2,571,989	1785	552,911	
	Non-Competing				3682	1,549,727	
	Total			5467	2,102,638		
2005	Competing	New	6357	\$2,239,503	1086	\$309,507	19.2%
		Renewal	1050	473,898	335	162,857	
		Supplement	22	6,147	7	1,185	
		Subtotal	7429	2,719,548	1428	473,549	
	Non-Competing				3984	1,656,614	
	Total			5412	2,130,164		
2006	Competing	New	6585	\$2,215,548	1105	\$293,912	19.2%
		Renewal	984	542,799	348	170,110	
		Supplement	13	4,098	2	681	
		Subtotal	7582	2,762,445	1455	464,703	
	Non-Competing				3980	1,633,442	
	Total			5435	2,098,145		
2007	Competing	New	6423	\$2,087,086	1178	\$306,431	20.2%
		Renewal	864	482,959	295	163,225	
		Supplement	12	3,346	2	610	
		Subtotal	7299	2,573,391	1475	470,266	
	Non-Competing				3997	1,582,827	
	Total			5472	2,053,093		

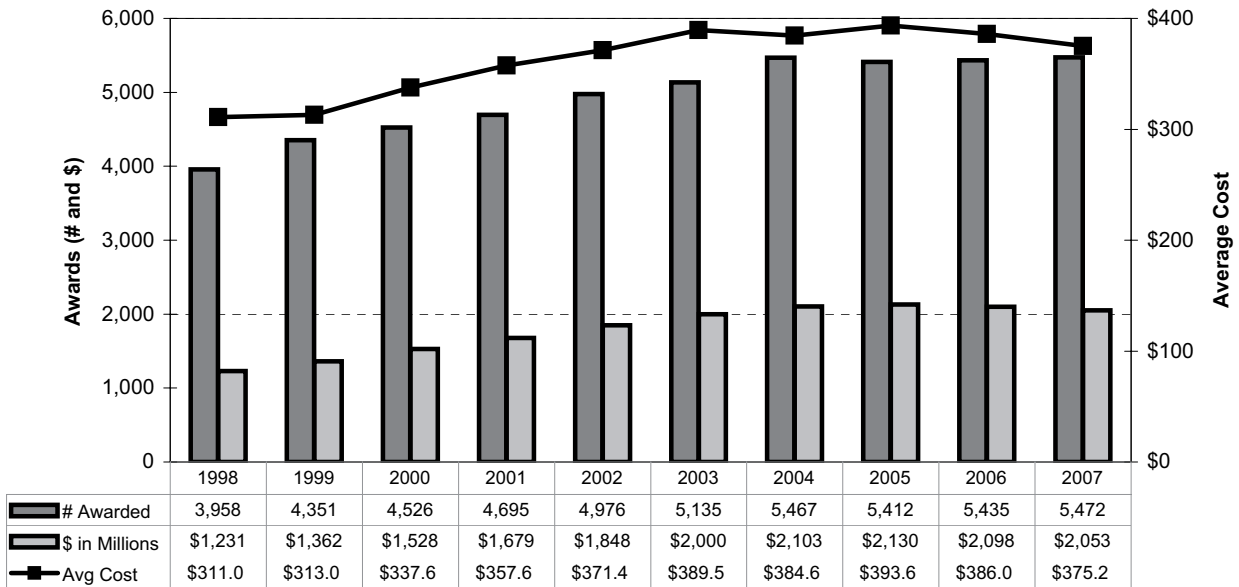
Includes Small Business Innovation Research and Small Business Technology Transfer Awards.

RPG Awards by Activity Code

Fiscal Years 1998 - 2007

(Dollars in Thousands; Activity Code Descriptions on next page)

	R01	P01	R35	R37	R29	RFA	U01	U19	R03	R21	R33	R15	R55	R56	SBIR/ STTR	TOTAL
1998	#	2,454	160	57	75	485	132	157	97	76		2	14		249	3,958
	\$	672,873	228,854	57,712	27,212	52,136	42,750	79,370	6,069	11,782		127	684		51,207	1,230,776
1999	#	2,796	169	38	71	413	261	31	108	159	6	2	6		291	4,351
	\$	775,961	249,583	38,585	27,377	45,361	112,868	21,319	7,355	22,548	2,079	200	620		57,917	1,361,773
2000	#	3,011	179	21	60	314	269	18	100	223	20		5		306	4,526
	\$	898,764	286,234	19,413	24,688	34,769	132,872	13,617	7,034	32,897	10,074	99	450		67,090	1,528,001
2001	#	3,231	178	1	61	210	260	18	122	231	49	3	3		328	4,695
	\$	1,008,199	301,115	2,186	26,682	23,738	150,224	14,873	9,024	42,326	23,883	358	300		75,833	1,678,741
2002	#	3,376	173		65	112	267	17	186	308	79	10	9		374	4,976
	\$	1,093,908	317,632		29,445	12,471	177,195	17,531	14,115	57,633	39,317	1,477	850		86,367	1,847,941
2003	#	3,573	178		70	14	252	27	203	360	81	21			356	5,135
	\$	1,207,387	336,607		35,360	1,584	173,342	31,126	15,207	67,742	37,714	3,086			90,857	2,000,012
2004	#	3,780	177		73	0	233	26	240	425	96	20			397	5,467
	\$	1,277,185	344,489		37,888	53	168,539	31,377	18,067	77,970	42,931	4,560			99,579	2,102,638
2005	#	3,848	176		74		254	30	223	430	88	20	2	1	265	5,412
	\$	1,312,762	338,660		40,007		171,403	34,100	1,049	16,894	76,566	36,250	4,091	200	407	97,775
2006	#	3,909	173		76		273	26	218	405	73	14		2	263	5,435
	\$	1,293,880	339,616		40,067		173,304	31,292	4,365	16,558	70,650	28,726	2,983		649	96,055
2007	#	3,849	172		73		285	22	3	284	437	48	19		2	5,472
	\$	1,266,622	326,968		38,232		177,423	24,295	4,212	21,640	78,748	16,739	4,042		495	93,677



*EXCLUDES projects awarded with the Stamp Out Breast Cancer Funds and Extramural Assessments.

Activity Code Descriptions

R01	Research Project (Traditional) - discrete, specified, circumscribed project to be performed by the named investigator(s) in an area representing his/her specified interest and competencies.
P01	Research Program Projects - broadly based, multidisciplinary, often long-term, research program which has a specific major objective or a basic theme. A program project is directed toward a range of problems having a central research focus in contrast to the usually narrower thrust of the traditional research project.
R35	Outstanding Investigator Grants - long-term support to an experienced investigator with an outstanding record of research productivity. This support is intended to encourage investigators to embark on long-term projects of unusual potential in a categorical program area.
R37	Methods to Extend Research in Time (MERIT) Award - long-term grant support to investigators whose research competence and productivity are distinctly superior and who are highly likely to continue to perform in an outstanding manner. Investigators may not apply for a MERIT award. Program staff and/or members of the cognizant National Advisory Council/Board will identify candidates for the MERIT award during the course of review of competing research grant applications prepared and submitted in accordance with regular PHS requirements.
R29	First Independent Research Support and Transition (FIRST) Award - sufficient initial period of research support for newly independent biomedical investigators to develop their research capabilities and demonstrate the merit of their research ideas.
RFA	Request for Applications - A formal statement inviting grant or cooperative agreement applications in a well-defined scientific area to accomplish specific program purposes and indicates the amount of funds set aside for the competition and/or the estimated number of awards to be made.
U01	Research Project Cooperative Agreement - discrete, specified, circumscribed project to be performed by the named investigator(s) in an area representing his/her specific interest and competencies.
U19	Research Program Cooperative Agreements - support research programs that have multiple projects directed towards specific major objective, basic theme, or program goal, requiring a broad-based, multidisciplinary, and often long-term, approach.
R03	Small Grants - research support specifically limited in time and amount for studies in categorical program areas. Small grants provide flexibility for initiating studies, which are generally for preliminary short-term projects and are non-renewable.
R21	Exploratory/Developmental Grants - Phase I development of new research activities in categorical program areas. Support generally is restricted in level of support and in time.
R33	Exploratory/Developmental Grants - Phase II development of new research activities in categorical program areas. Support generally is restricted in level of support and in time.
R15	Academic Research Enhancement Award (AREA) - to domestic health professional schools and other institutions offering baccalaureate or advanced degrees in health sciences, except those that have received NIH research grants and/or cooperative agreements. Supports feasibility studies and other small-scale research projects.
R55	Shannon Awards - limited support to scientists whose research applications fall short of the cutoff for funding yet are at the "margin of excellence" whereby the perceived quality of the grant is statistically indistinguishable from grants that are funded.
R56	High-Priority, Short-Term Project Award - provide limited, non-renewable interim support to enable an applicant to gather additional data for revision of a new or competing renewal application.
R41	Small Business Technology Transfer (STTR) Grants - Phase I - limited support to projects conducted jointly by a small business concern and a research institution in which not less than 40% of the work is performed by the small business.
R42	Small Business Technology Transfer (STTR) Grants - Phase II - limited support to projects conducted jointly by a small business concern and a research institution in which not less than 40% of the work is performed by the small business.
R43	Small Business Innovation Research (SBIR) Grants - Phase I - projects limited in time and amount, to establish the technical merit and feasibility of R&D ideas which may ultimately lead to commercial products or services.
R44	Small Business Innovation Research (SBIR) Grants - Phase II - in-depth development of R&D ideas whose feasibility has been established in Phase I and which are likely to result in commercial products or services.
U43	Small Business Innovation Research (SBIR) Cooperative Agreement - Phase I - utilized when an assistance relationship will exist between the institute and a recipient and in which substantial programmatic involvement is anticipated between the institute and the recipient during performance of the contemplated activity. Supports projects limited in time and amount to establish the technical merit and feasibility of R&D ideas which may ultimately lead to commercial products or services.
U44	Small Business Innovation Research (SBIR) Cooperative Agreement - Phase II - utilized when an assistance relationship will exist between the institute and a recipient and in which substantial programmatic involvement is anticipated between the institute and the recipient during performance of the contemplated activity. Supports in-depth development of R&D ideas whose feasibility has been established in Phase I and which are likely to result in commercial products or services.

Cancer Centers by State (P30 Core Grants), Fiscal Year 2007

(Dollars in Thousands)

State	Grantee Institution	Type	Amount
Alabama	University of Alabama at Birmingham	Comprehensive	5,966
Arizona	University of Arizona	Clinical	4,904
California	Burnham Institute for Medical Research	Basic	3,388
	City of Hope/Beckman Research Institute	Comprehensive	2,378
	Salk Institute for Biological Studies	Basic	2,974
	Stanford University	Clinical	1,500
	University of California Davis	Clinical	2,830
	University of California Irvine	Comprehensive	2,614
	University of California Los Angeles	Comprehensive	4,650
	University of California San Diego	Comprehensive	4,059
	University of California San Francisco	Comprehensive	7,731
	University of Southern California	Comprehensive	6,578
Colorado	University of Colorado Denver/HSC Aurora	Comprehensive	4,397
Connecticut	Yale University	Comprehensive	1,871
Dist of Col	Georgetown University	Comprehensive	3,072
Florida	H. Lee Moffitt Cancer Center & Research Institute	Comprehensive	3,151
Hawaii	University of Hawaii at Manoa	Clinical	1,464
Illinois	Northwestern University	Comprehensive	5,100
	University of Chicago	Clinical	3,852
Indiana	Indiana University - Purdue University at Indianapolis	Clinical	1,379
	Purdue University West Lafayette	Basic	1,165
Iowa	University of Iowa	Comprehensive	2,501
Maine	Jackson Laboratory	Basic	2,302
Maryland	Johns Hopkins University	Comprehensive	7,923
Massachusetts	Dana-Farber Cancer Institute	Comprehensive	11,897
	Massachusetts Institute of Technology	Basic	2,816
Michigan	University of Michigan at Ann Arbor	Comprehensive	5,988
	Wayne State University	Comprehensive	2,507
Minnesota	Mayo Clinic Rochester	Comprehensive	5,313
	University of Minnesota Twin Cities	Comprehensive	3,615
Missouri	Washington University	Comprehensive	4,302
Nebraska	University of Nebraska Medical Center	Clinical	1,917
New Hampshire	Dartmouth College	Comprehensive	3,012
New Jersey	Robert Wood Johnson Medical School	Comprehensive	3,256
New Mexico	University of New Mexico Albuquerque	Clinical	1,376
New York	Cold Spring Harbor Laboratory	Basic	4,086
	Columbia University Health Sciences	Comprehensive	0
	New York University School of Medicine	Clinical	2,563
	Roswell Park Cancer Institute Corp	Comprehensive	3,776
	Sloan-Kettering Institute for Cancer Res	Comprehensive	11,956
	Yeshiva University	Clinical	3,888
North Carolina	Duke University	Comprehensive	6,642
	University of North Carolina Chapel Hill	Comprehensive	6,482
	Wake Forest University Health Sciences	Comprehensive	1,444
Ohio	Case Western Reserve University	Comprehensive	5,104
	Ohio State University	Comprehensive	4,034
Oregon	Oregon Health & Science University	Clinical	1,201
Pennsylvania	Fox Chase Cancer Center	Comprehensive	8,065
	Thomas Jefferson University	Clinical	4,366
	University of Pennsylvania	Comprehensive	7,498
	University of Pittsburgh at Pittsburgh	Comprehensive	5,423
	Wistar Institute	Basic	2,521
Tennessee	St. Jude Children's Research Hospital	Clinical	5,332
	Vanderbilt University	Comprehensive	5,293
Texas	Baylor College of Medicine	Clinical	1,612
	University of Texas San Antonio Health Science Center	Clinical	2,861
	University of Texas M.D. Anderson Cancer Center	Comprehensive	9,239
Utah	University of Utah	Clinical	693
Vermont	University of Vermont & St. Agric College	Comprehensive	1,305
Virginia	University of Virginia Charlottesville	Clinical	2,504
	Virginia Commonwealth University	Clinical	1,939
Washington	Fred Hutchinson Cancer Research Center	Comprehensive	10,119
Wisconsin	University of Wisconsin Madison	Comprehensive	5,044
	Total P30s	63	258,739
	Total Planning Grants (P20s)		6,138
	Center for AIDS Research (CFAR)		4,792
	Other P30s & U41s		3,515

Total Cancer Centers

\$273,184

Specialized Programs of Research Excellence, Fiscal Year 2007

(Dollars in Thousands)

In 1992, the NCI established the Specialized Programs of Research Excellence (SPORE). This program promotes interdisciplinary research and speeds the bidirectional exchange between basic and clinical science to move basic research findings from the laboratory to applied settings involving patients and populations. The goal of the SPORE program is to bring to clinical care settings novel ideas that have the potential to reduce cancer incidence and mortality, and to improve survival, and the quality of life.

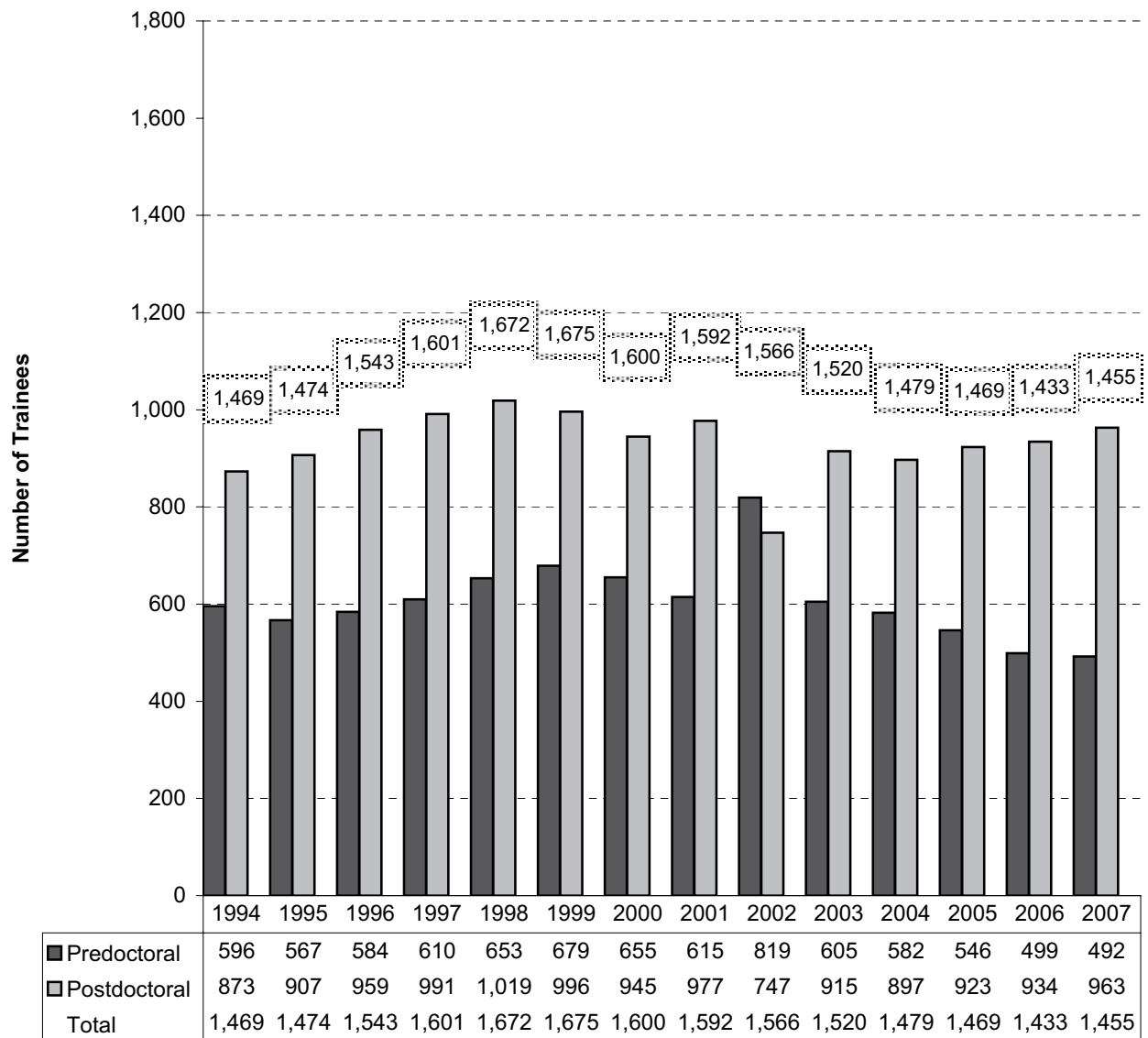
Laboratory and clinical scientists work collaboratively to plan, design and implement research programs that impact on cancer prevention, detection, diagnosis, treatment and control. To facilitate this research, each SPORE develops and maintains specialized resources that benefit all scientists working on the specific cancer site, as well as SPORE scientists. An additional SPORE element is a career development program that recruits scientists both within and outside the SPORE institution to enlarge the cadre of laboratory and clinical scientists dedicated to translational research on human cancer. SPOREs meet annually to share data, assess research progress, identify new research opportunities and establish research priorities.

Mechanism	Site	No.	Amount
P50 SPOREs	Brain	4	\$5,849
	Breast	11	26,048
	Cervical	1	2,412
	Genitourinary	2	4,881
	Gastrointestinal	5	11,485
	Head and Neck	4	5,883
	Leukemia	1	2,363
	Lung	6	11,870
	Lymphoma	4	8,076
	Myeloma	1	2,136
	Ovarian	4	9,122
	Pancreatic	1	2,179
	Prostate	10	19,110
	Skin	4	7,280
	Uterine	1	1,848
	Total P50s	59	120,542
P20 SPOREs	Lung	1	1,002
	Pancreatic	2	1,898
		Total P20s	3
	Subtotal	62	123,442
Co-funded	Head & Neck with NIDCR		1
	Urology with NIDDK		365
		Total Co-funded	
Total		62	\$123,808

NRSA Predoctoral and Postdoctoral Trainees

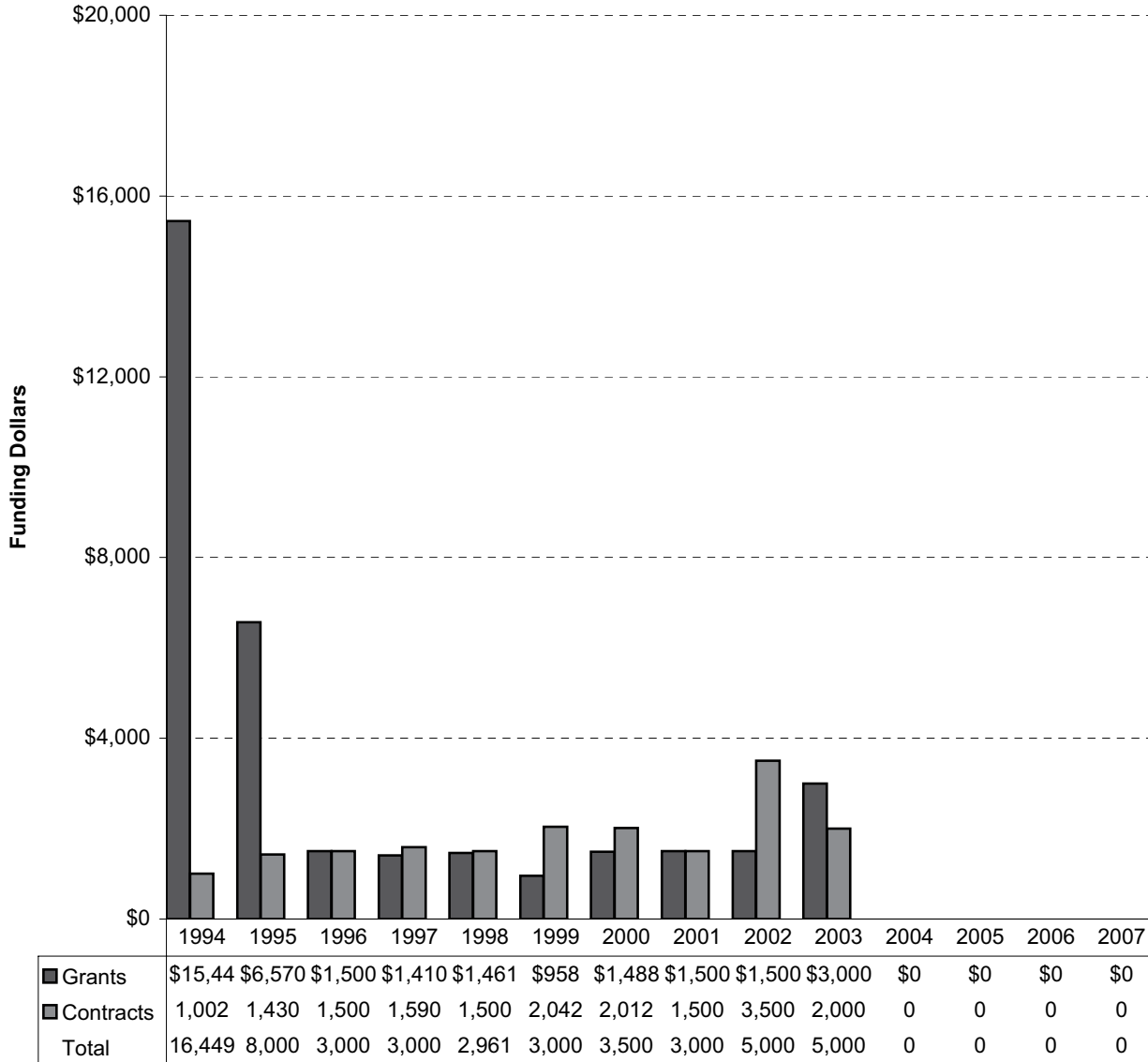
Fiscal Years 1994 - 2007

(Full Time Trainee Positions)



Construction/Renovation Funding Fiscal Years 1994 - 2007

(Dollars in Thousands)



*Excludes Buildings and Facilities used for repairs and improvements at the NCI - Frederick facility totaling \$7,936 in FY 2005, \$7,920 in FY 2006, and \$7,920 in FY 2007.

Grant and Contract Awards by State Fiscal Year 2007

(Dollars in Thousands)

State	Grants		Contracts		Total NCI		State
	No	Amount	No	Amount	No	Amount	
Alabama	74	\$36,040	6	\$5,522	80	\$41,562	Alabama
Alaska	1	307			1	307	Alaska
Arizona	80	42,825	2	2,679	82	45,504	Arizona
Arkansas	16	7,248			16	7,248	Arkansas
California	922	458,728	25	24,113	947	482,842	California
Colorado	94	34,996	4	2,749	98	37,745	Colorado
Connecticut	93	35,757	2	3,043	95	38,800	Connecticut
Delaware	4	1,643			4	1,643	Delaware
District of Columbia	73	28,276	23	11,711	96	39,987	District of Columbia
Florida	185	59,904	3	4,702	188	64,606	Florida
Georgia	90	34,098	9	6,014	99	40,112	Georgia
Hawaii	22	14,453	3	4,154	25	18,606	Hawaii
Illinois	246	104,060	13	10,946	259	115,007	Illinois
Indiana	82	24,445	2	486	84	24,931	Indiana
Iowa	44	14,933	3	5,159	47	20,091	Iowa
Kansas	22	7,615	2	343	24	7,958	Kansas
Kentucky	52	13,353	3	2,549	55	15,901	Kentucky
Louisiana	39	9,718	2	1,907	41	11,625	Louisiana
Maine	9	4,897			9	4,897	Maine
Maryland	265	118,727	68	255,597	333	374,324	Maryland
Massachusetts	680	331,277	11	7,432	691	338,709	Massachusetts
Michigan	209	92,386	6	9,002	215	101,388	Michigan
Minnesota	181	89,854	5	5,725	186	95,579	Minnesota
Mississippi	4	1,517			4	1,517	Mississippi
Missouri	118	50,433	10	6,758	128	57,190	Missouri
Montana	4	1,701			4	1,701	Montana
Nebraska	28	12,212			28	12,212	Nebraska
Nevada	9	2,784	1	150	10	2,934	Nevada
New Hampshire	64	26,220	2	1,013	66	27,233	New Hampshire
New Jersey	102	30,644	3	3,314	105	33,958	New Jersey
New Mexico	30	10,992	1	1,485	31	12,477	New Mexico
New York	649	282,937	10	9,496	659	292,433	New York
North Carolina	294	122,476	8	3,819	302	126,294	North Carolina
North Dakota	3	1,043			3	1,043	North Dakota
Ohio	259	101,303	9	5,183	268	106,486	Ohio
Oklahoma	13	3,345	2	1,565	15	4,909	Oklahoma
Oregon	62	19,276			62	19,276	Oregon
Pennsylvania	543	259,383	5	4,379	548	263,762	Pennsylvania
Rhode Island	42	13,465	1	67	43	13,532	Rhode Island
South Carolina	54	15,631			54	15,631	South Carolina
South Dakota	4	2,272			4	2,272	South Dakota
Tennessee	192	99,850	1	2,405	193	102,255	Tennessee
Texas	521	223,792	10	5,712	531	229,504	Texas
Utah	49	16,768	2	2,067	51	18,835	Utah
Vermont	13	6,413			13	6,413	Vermont
Virginia	94	35,511	43	76,106	137	111,617	Virginia
Washington	256	134,179	6	7,819	262	141,998	Washington
West Virginia	7	1,465	1	806	8	2,270	West Virginia
Wisconsin	120	47,180	4	2,976	124	50,156	Wisconsin
Subtotal	7,017	3,088,330	311	498,950	7,328	3,587,280	Subtotal
American Samoa	1	341			1	341	American Samoa
Guam	1	399			1	399	Guam
Puerto Rico	5	2,132			5	2,132	Puerto Rico
Total	7,024	3,091,202	311	498,950	7,335	3,590,152	Total

Excludes STAMP, NRSA TAP, Loan Repayment Program, Foreign Contracts and Grants, Program Evaluation, and other assessments and miscellaneous expenses.

Grant and Contract Awards by Country Fiscal Year 2007

(Dollars in Thousands)

Country	Grant		Contract		Total NCI		Country
	No	Amount	No	Amount	No	Amount	
Australia	9	\$3,629			9	\$3,629	Australia
Belgium	1	417			1	417	Belgium
Brazil		27				27	
Canada	27	9,718	1	2,396	28	12,114	Canada
China	1	180	3	359	4	539	China
Costa Rica			1	3,893	1	3,893	Costa Rica
Finland			1	307	1	307	Finland
France	6	2,523			6	2,523	France
Germany	2	341			2	341	Germany
Iceland	1	354			1	354	Iceland
India	1	216			1	216	India
Israel	10	1,835			10	1,835	Israel
Italy	1	52			1	52	Italy
Netherlands	2	235			2	235	Netherlands
New Zealand	1	55			1	55	New Zealand
Russia			2	204	2	204	Russia
Singapore	1	217			1	217	Singapore
South Africa	1	46			1	46	South Africa
Spain	2	386			2	386	Spain
Sweden	3	1,222			3	1,222	Sweden
Switzerland	2	542			2	542	Switzerland
Turkey		26				26	Turkey
United Kingdom	8	1,408	1	192	9	1,600	United Kingdom
Total Foreign	79	23,429	9	7,351	88	30,780	

Institutions Receiving More than \$15 Million in NCI Support, FY 2007

(Dollars in Thousands)

State	Institution	Grants	Contracts	Total NCI
Alabama	University of Alabama at Birmingham	\$31,986	\$3,069	\$35,055
Arizona	University of Arizona	31,254	2,679	33,932
California	Burnham Institute for Medical Research	19,229		19,229
	City of Hope's Beckman Research Institute	19,978		19,978
	National Childhood Cancer Foundation	41,529		41,529
	Scripps Research Institute	18,987		18,987
	Stanford University	49,523		49,523
	University of California System	198,060	4,784	202,844
	University of Southern California	34,488	3,572	38,059
Colorado	University of Colorado Health Sciences Center	23,066	1,811	24,877
Connecticut	Yale University	30,000	962	30,961
District of Columbia	Georgetown University	20,951	4,984	25,935
Florida	H. Lee Moffitt Cancer Center & Research Institute	30,437		30,437
Georgia	Emory University	22,656	1,851	24,507
Hawaii	University of Hawaii	13,505	2,021	15,526
Illinois	Northwestern University	26,235	1,602	27,837
	University of Chicago	42,131	2,023	44,154
	University of Illinois at Chicago	15,169		15,169
Iowa	University of Iowa	13,117	5,159	18,276
Maryland	The Johns Hopkins University	78,624	2,681	81,305
	SAIC-Frederick, Inc.		170,522	170,522
	Westat, Inc.		33,146	33,146
Massachusetts	Beth Israel Deaconess Medical Center	19,674		19,674
	Brigham and Women's Hospital	41,998		41,998
	Dana-Farber Cancer Institute	77,622		77,622
	Frontier Science & Tech. Research Foundation	15,456		15,456
	Harvard University	36,185		36,185
	Massachusetts General Hospital	36,809	2,581	39,391
	Massachusetts Institute of Technology	30,419		30,419
Michigan	University of Michigan at Ann Arbor	63,154		63,154
	Wayne State University	14,977	5,400	20,377
Minnesota	Mayo Clinic in Rochester	54,173	3,731	57,904
	University of Minnesota	32,632	1,994	34,625
Missouri	Washington University	35,675	3,540	39,214
New Hampshire	Dartmouth College	25,737	263	26,000
New Jersey	University of Medicine and Dentistry of New Jersey	16,615		16,615
New York	Columbia University Health Sciences	22,380		22,380
	Mount Sinai School of Medicine	21,298		21,298
	New York University	21,469		21,469
	Roswell Park Cancer Institute Corporation	36,104		36,104
	Sloan-Kettering Institute for Cancer Research	77,841	1,039	78,880
	Yeshiva University	19,683		19,683
North Carolina	Duke University	55,893	643	56,536
	University of North Carolina at Chapel Hill	45,309		45,309
Ohio	Case Western Reserve University	24,342		24,342
	Cleveland Clinic Lerner College of Medicine, CWRU	15,940		15,940
	Ohio State University	36,886	2,118	39,004
Pennsylvania	American College of Radiology	23,969		23,969
	Fox Chase Cancer Center	27,930	2,578	30,508
	NSABP Foundation	18,083		18,083
	Thomas Jefferson University	17,434		17,434
	University of Pennsylvania	62,832		62,832
	University of Pittsburgh	57,400	1,703	59,103
Tennessee	St. Jude Children's Research Hospital	23,581	2,405	25,985
	Vanderbilt University	66,265		66,265
Texas	Baylor College of Medicine	33,978		33,978
	University of Texas, MD Anderson Cancer Center	111,960	4,418	116,378
	University of Texas, SW Medical Center at Dallas	17,108		17,108
Utah	University of Utah	14,461	2,067	16,528
Virginia	University of Virginia at Charlottesville	17,321		17,321
Washington	Fred Hutchinson Cancer Research Center	87,425	6,500	93,925
	University of Washington	30,672	500	31,172
Wisconsin	University of Wisconsin	34,381	1,702	36,083
	Total	\$2,283,991	\$284,047	\$2,568,038

Includes Manpower Development Grants

Appropriations of the NCI 1938-2007

(In Whole Dollars)

1938 - 1969	\$1,875,699,720	
1970 - 1979	6,073,870,500	
1980 - 1989	11,958,860,000	
1990.....	1,664,000,000	prior to reductions in PL 101-166 (-\$6,839,000) and PL101-239 (-\$22,829,000).
1991.....	1,766,324,000	prior to reductions in PL 101-517 (-\$8,972,000 for salary and expense reduction; -\$42,568,000 for across-the-board reduction).
1992.....	1,989,278,000	prior to reductions in PL 102-170 (-\$21,475,000 for salary and expense reduction; -\$1,262,000 for travel reduction; \$15,000,000 transferred to other institutes for cancer research).
1993.....	2,007,483,000	prior to reductions in PL 102-294 (-\$16,060,000 for .8% reduction to all line items, -\$9,933,000 for S&E reduction, -\$139,000 for consultant services reduction).
1994.....	2,082,267,000	prior to reduction in PL103-211 (-\$5,885,000 administration reduction).
1995.....	2,135,119,000	prior to reductions in PL 103-211 (-\$1,883,000 for Procurement reduction; -\$116,000 for SLUC reduction; -\$1,052,000 for Bonus Pay reduction). Includes \$218,199,000 of AIDS funding.
1996.....	2,251,084,000	Includes \$225,790,000 of AIDS funding.
1997.....	2,382,532,000	Includes \$224,983,000 of AIDS funding.
1998.....	2,547,314,000	prior to reductions in PL 105-119 (-\$4,755,000 via the Secretary's 1% transfer authority). Includes \$8,699,000 transferred via the NIH Director's 1% transfer authority, \$41,000 transfer from U.S. Dept. of State in PL 105-119, and \$226,414,000 of AIDS funding.
1999.....	2,927,187,000	prior to reductions in PL 106-51 (-\$1,940,000 for travel and admin. expenses). Includes -\$931,000 transferred via the Secretary 1% transfer authority, and -\$6,259,000 transferred via the NIH Director's 1% transfer authority, and \$239,190,000 of AIDS funding.
1990 - 1999	21,752,588,000	
2000.....	3,332,317,000	prior to reductions in PL 106-113 (-\$17,763,000 for across the board reduction). Includes \$245,804,000 of AIDS funding.
2001.....	3,757,242,000	prior to reductions in PL 106-554(-\$2,005,000 for across-the-board reduction). Includes -\$711,000 Secretary's 1% transfer, -\$781,000 transfer for Office of Human Research Protection and -\$24,000 lapse. Includes \$255,960,000 of AIDS funding.
2002.....	4,190,405,000	prior to reductions in PL 107-116(-\$4,524,000 via the Secretary's 1% transfer authority, -\$2,054,000 for the enacted rescission, -\$7,118,000 administrative reduction and -\$8,000 lapse). Includes \$254,396,000 of AIDS funding.
2003.....	4,622,394,000	prior to reductions in PL 108-7(-\$30,046,000 for the enacted rescission and -\$2,000 lapse). Includes \$263,442,000 of AIDS funding.
2004.....	4,770,519,000	prior to reductions in PL 108-199(-\$3,136,000 for Labor/HHS/ED rescission; \$28,128,000 for across the board reduction; -\$15,357,000 NIH 1% transfer assessment, and \$5,000 lapse). Includes \$266,975,000 of AIDS funding.
2005.....	4,865,525,000	prior to reductions in PL 108-447(\$38,914,000 .8% across the board reduction; -\$1,353,000 for Labor/HHS/ED rescission; -\$30,505,000 NIH 1% transfer assessment, and \$9,000 lapse). Includes \$265,907,000 of AIDS funding.
2006.....	4,841,774,000	prior to reductions in PL 109-149 (-\$48,418,000 for Labor/HHS/ED rescission; -\$3,293,000 HHS transfer for CMS activities; -\$42,834,000 NIH 1% transfer for roadmap activities, and \$4,000 lapse). Includes \$253,866,000 of AIDS funding.
2007.....	4,797,639,000	prior to reductions in PL 110-5 (-\$5,015,000 NIH transfer for GEI activities, and \$9,000 lapse). Includes \$253,866,000 of AIDS funding.
1938-2006	76,838,833,220	

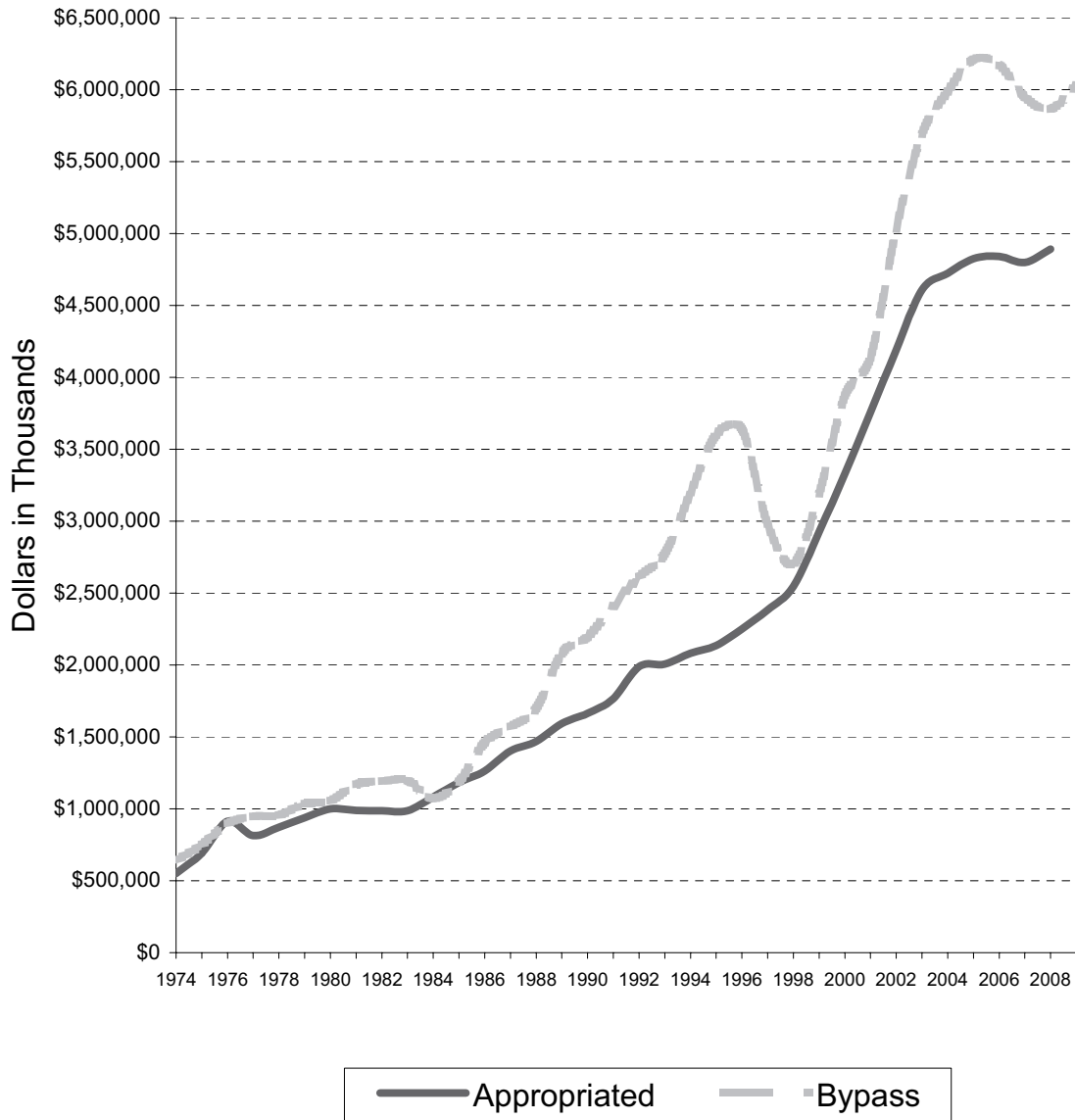
Bypass Budget Requests Fiscal Years 1973 - 2009

(In Whole Dollars)

Fiscal Year	Request
1973.....	\$550,790,000
1974.....	640,031,000
1975.....	750,000,000
1976.....	898,500,000
1977.....	948,000,000
1978.....	955,000,000
1979.....	1,036,000,000
1980.....	1,055,000,000
1981.....	1,170,000,000
1982.....	1,192,000,000
1983.....	1,197,000,000
1984.....	1,074,000,000
1985.....	1,189,000,000
1986.....	1,460,000,000
1987.....	1,570,000,000
1988.....	1,700,000,000
1989.....	2,080,000,000
1990.....	2,195,000,000
1991.....	2,410,000,000
1992.....	2,612,000,000
1993.....	2,775,000,000
1994.....	3,200,000,000
1995.....	3,600,000,000
1996.....	3,640,000,000
1997.....	2,977,000,000
1998.....	2,702,500,000
1999.....	3,191,000,000
2000.....	3,873,000,000
2001.....	4,135,000,000
2002.....	5,030,000,000
2003.....	5,690,000,000
2004.....	5,986,000,000
2005.....	6,211,000,000
2006.....	6,170,000,000
2007.....	5,949,714,000
2008.....	5,865,788,000
2009.....	6,028,386,000

The National Cancer Act in December 1971, included a provision for the Director, NCI to submit an annual budget request directly to the President, with comment only by NIH and DHHS. This Bypass Budget was first submitted for 1973.

Bypass Requests and Appropriations of the NCI Fiscal Years 1974 - 2009



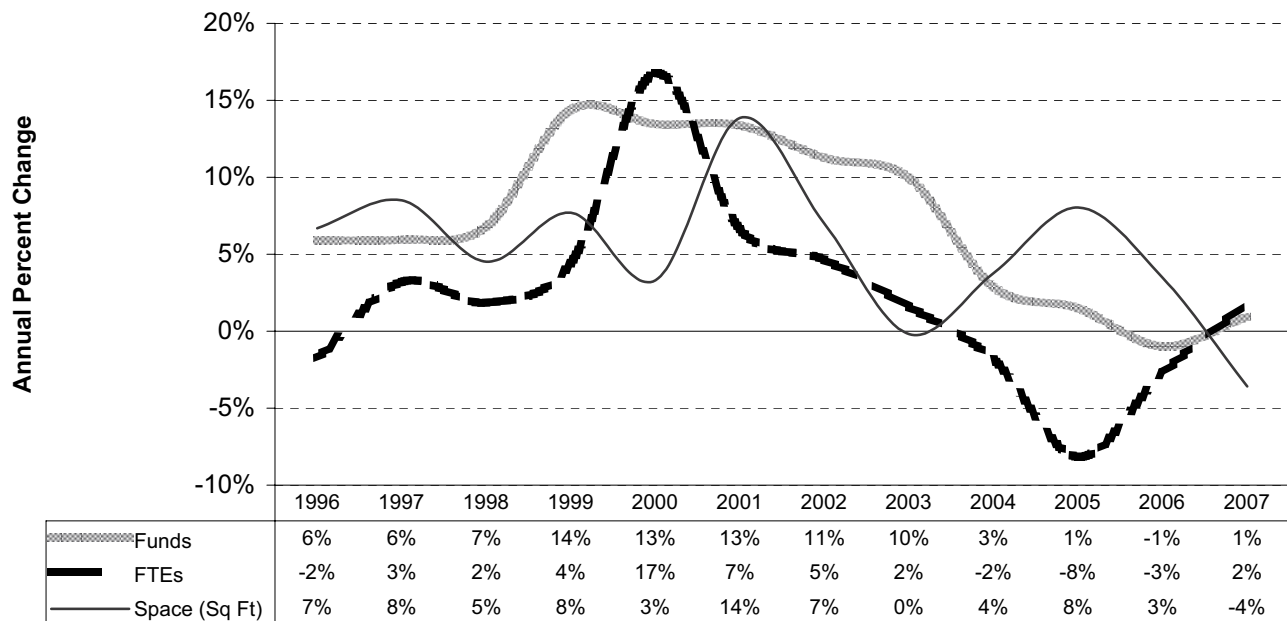
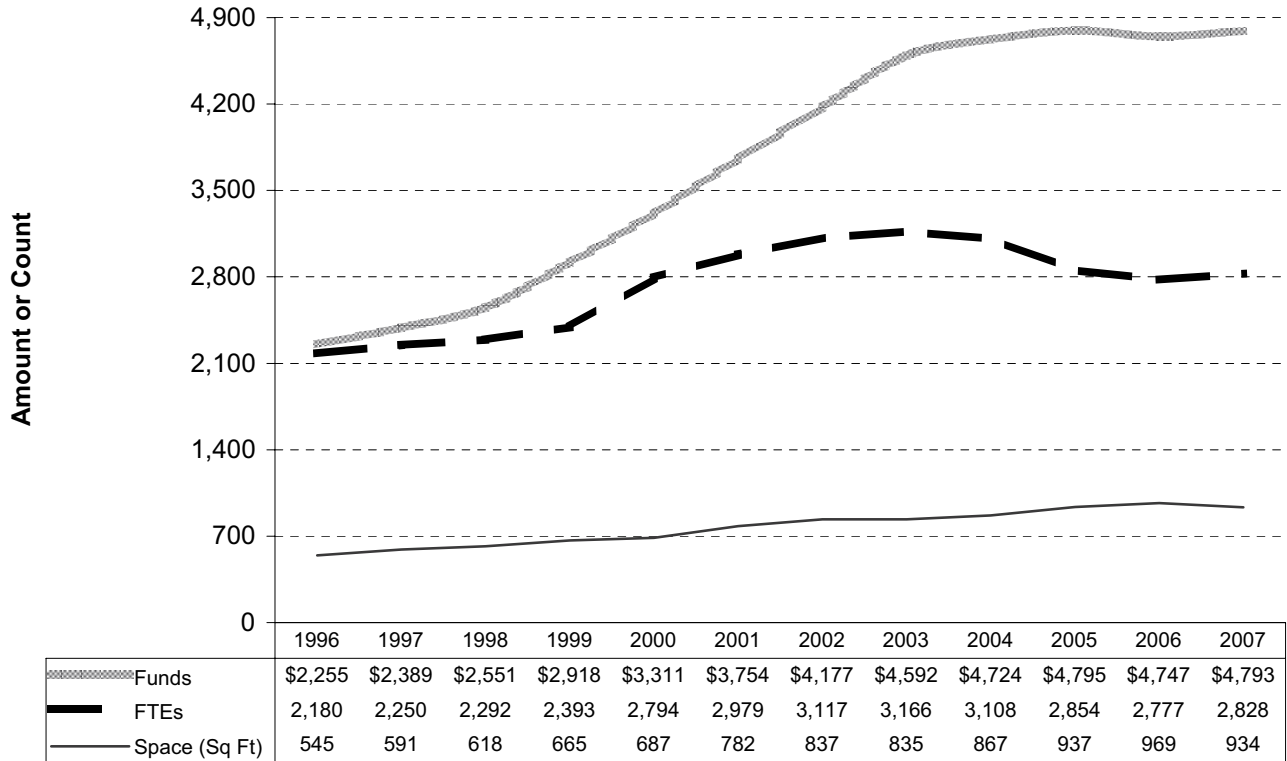
Comparison of Dollars, Positions and Space Fiscal Years 1996 - 2007

Funds are obligations against the annual appropriation in millions of dollars.

FTEs are the number of workyears for appointed employees of the NCI. A workyear equals 2,080 hours.

The increase in FTEs in FY 2000 is due to the fact that 195 contract staff were converted to NCI appointments.

Space is in thousands of square feet, excluding NCI-Frederick.



Personnel Resources

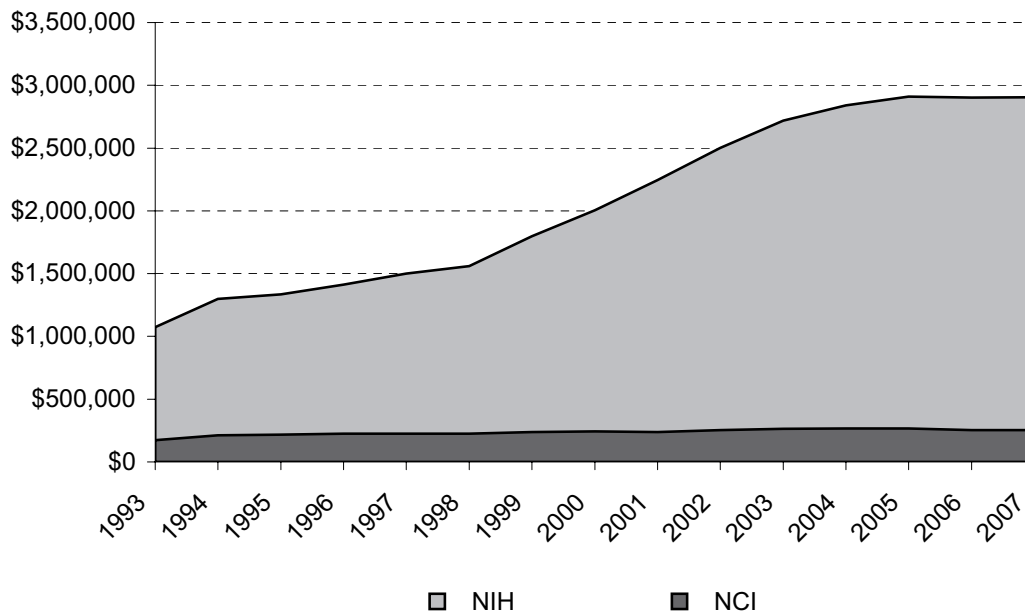
Fiscal Years 1998 - 2007

Fiscal Year	Full Time Appointment	Part Time Appointment	Training Fellows	Total Personnel Resources
1998	1,921	466	1,124	3,511
1999	1,941	628	1,060	3,629
2000	2,139	831	1,202	4,172
2001	2,224	912	963	4,099
2002	2,250	979	949	4,178
2003	2,193	1,073	1,191	4,457
2004	2,083	990	1,232	4,305
2005	1,959	882	1,077	3,918
2006	2,579	289	1,113	3,981
2007	2,421	498	1,111	4,030

AIDS Funding History

Fiscal Years 1993 - 2007

Fiscal Year	NCI	NIH	% NCI of NIH
1993	\$173,029	\$1,073,957	16%
1994	212,868	1,298,996	16%
1995	217,430	1,333,600	16%
1996	225,360	1,411,860	16%
1997	224,733	1,501,073	15%
1998	225,991	1,559,071	14%
1999	239,190	1,797,422	13%
2000	244,145	2,005,100	12%
2001	237,789	2,244,160	11%
2002	254,396	2,500,866	10%
2003	263,442	2,718,171	10%
2004	266,975	2,840,384	9%
2005	265,907	2,909,381	9%
2006	253,666	2,902,183	9%
2007	253,666	2,904,536	9%





NATIONAL[®]
CANCER
INSTITUTE

NIH Publication No. 08-6393
Printed January 2008

