

NCI

FACT BOOK

**National
Cancer
Institute**

2001

**U.S. DEPARTMENT
OF HEALTH AND
HUMAN SERVICES**

Public Health Service

National Institutes of Health

The information set forth in this publication is compiled and amended annually by the financial management staff of the National Cancer Institute and is intended primarily for use by members of the Institute, principal advisory groups to the Institute and others involved in the administration and management of the National Cancer Program. Questions regarding any of the information contained herein may be directed to the Financial Management Branch, National Cancer Institute, 9000 Rockville Pike, Bethesda, Maryland, 20892.

TABLE OF CONTENTS

Executive Summary iii
Organization	
Director's Biography	O-1
Former Directors of the NCI	O-2
National Cancer Advisory Board.....	O-3
Boards of Scientific Counselors and Advisors.....	O-7
President's Cancer Panel.....	O-8
Executive Committee Members	O-8
NCI Director's Consumer Liaison Group.....	O-9
Organization Charts:	
National Cancer Institute.....	O-10
Office of the Director.....	O-11
OD I: Office of Management	O-12
OD II: Office of the Deputy Director	O-13
OD II: Center to Reduce Cancer Health Disparities.....	O-13
OD III: Office of the Deputy Director for Extramural Science.....	O-14
OD IV: Office of Communications	O-15
OD IV: Office of Science Planning and Assessment.....	O-15
OD IV: Office of Budget and Financial Management	O-15
Center for Cancer Research.....	O-16
Division of Cancer Epidemiology and Genetics.....	O-18
Division of Cancer Prevention.....	O-19
Division of Cancer Control and Population Sciences	O-20
Division of Cancer Treatment and Diagnosis.....	O-21
Division of Cancer Biology	O-22
Division of Extramural Activities	O-23
Cancer Statistics	
Number of Deaths for the Five Leading Cancer Sites.....	C-1
Relationship of Cancer to the Leading Causes of Death in the U.S.	C-1
Estimated New Cancer Cases and Deaths	C-2
The Cost of Cancer	C-3
Average Years of Life Lost Per Person Dying of Cancer	C-4
Five-Year Relative Survival Rates by Cancer Site	C-5
Cancer Incidence Rates.....	C-6
Cancer Mortality Rates Changes from 1992 to 1998.....	C-7
Cancer Incidence Rates by Race	C-8
Cancer Mortality Rates by Race	C-9
Budget Data	
NCI Budget	B-1
Program Structure	B-2
Extramural Funds.....	B-3
NCI Obligations by Mechanism	B-4
Division Obligations by Mechanism	B-5
NIH Management Fund, Service & Supply Fund and GSA Rent	B-6
Special Sources of Funds	B-7
Research Funding for Various Research Areas	B-8

Extramural Programs	Research Project Grants:	
	Number of Awards	E-1
	Requested, Awarded.....	E-2
	Awards by Activity Code.....	E-3
	Activity Code Descriptions	E-4
	Cancer Centers	
	By State.....	E-5
	Specialized Programs of Research Excellence (SPORE).....	E-6
	National Research Service Awards – Pre and Post Doctoral Trainees	E-7
	Construction/Renovation Funding	E-8
	Grant and Contract Awards by State	E-9
Grant and Contract Awards by Country	E-10	
Institutions Receiving More than \$15,000,000 in NCI Support	E-11	
Historical Trends	Appropriations of the NCI	H-1
	Bypass Budget Requests	H-2
	Comparison of Bypass Requests and Appropriations of the NCI	H-3
	Comparison of Dollars, Positions and Space.....	H-4
	Personnel Resources	H-5
	AIDS Funding History	H-6

This publication may be viewed on the World Wide Web by pointing a browser to the Financial Management Branch homepage on the National Cancer Institutes website: www.nci.nih.gov or www.cancer.gov.

Executive Summary

Fiscal Year 2001 Annual Report

BUDGET IN REVIEW

This report provides a summary of the distribution of the FY 2001 budget among the various National Cancer Institute (NCI) research programs and funding mechanisms, funding policies influencing grant awards, and comparisons with prior year allocations. Additional information on the NCI budget is accessible from the NCI Home Page (<http://www.nci.nih.gov/>).

Summary

Funds available to the NCI in fiscal year 2001 totaled over \$3.754 billion, reflecting an increase of over 13% and \$443 million over the previous fiscal year.

Fiscal highlights from FY 2001 include:

- Of the \$443 million increase, almost 60% -- over \$263 million -- was allocated for Research Grants
- The greatest number of Research Project Grants (RPG)-- 4,695-- in NCI's history were funded
- Over 30% of the total NCI budget supported ongoing non-competing (Type 5) RPGs
- 1/4th of the RPGs awarded were new (Type 1) or competing renewal (Type 2) awards
- RO1 grants were again funded to the 22nd percentile
- 328 grants and almost \$76 million were funded as Small Business Innovation Research (SBIR) and Small Business Technology Transfer (STTR) awards
- \$70 million or 16% of the FY 2001 increase was allocated for Cancer Prevention & Control
- The percent of the budget that Intramural Research represents continued to drop to 15.1% in FY 2001, down from 15.3% in FY 2000 and 17.3% in 1997
- Research Career training (K awards) dollars were expanded by 25%

Distribution of the Budget by Funding Mechanism for FY 2000 and 2001

Summary Points

Of the \$443 million increase:

- Representing almost 60% of the increase, \$264 million was allocated for the Research Grants budget mechanisms; an additional \$70 million (16%) was funded through the Cancer Prevention & Control budget mechanism
- \$169 million, or 38%, of the increase was provided to the Research Project Grant (RPG) category
- Within the RPG category, \$117 million of the increase was allocated to cover increased expenses for non-competing grants
- 4,695 RPGs, of which 328 were SBIR/STTR awards, were supported
- Funds for training and career development of current and future research scientists funded through Research Career Awards grew by 25%
- Cancer Education funding increased by over 29%, while SPORES increased by 47%
- The “Other Grants” mechanism includes the Resource Grant Program (R24/U24); these Grants, which were used to fund initiatives such as the Cancer Genetics Network, the Pediatric Brain Tumor clinical trails consortium, and Bioengineering Research Partnerships, expanded by 47% in FY 2001
- FY 2001 was also the first year for a new grant activity, Specialized Centers (U54); these have funded initiatives such as Comprehensive Minority Institution/Cancer Center Partnerships and Interdisciplinary Research Teams for Molecular Target Assessment

NCI Dollars by Mechanism for FY 2000 and 2001

(in thousands)

	2000	2001	Change '00-01	
			Am't	%
Research Project Grants:				
Noncompeting	\$1,050,107	\$1,166,705	\$116,598	11.1%
Admin Supplements	23,721	36,831	13,110	55.3%
Competing	387,083	417,233	30,150	7.8%
Subtotal, RPG	1,460,911	1,620,769	159,858	10.9%
SBIR/STTR	67,090	75,833	8,743	13.0%
Total, RPG	1,528,001	1,696,602	168,601	11.0%
Cancer Centers	169,068	192,116	23,048	13.6%
Specialized Cancer Centers (U54)	-	10,771	10,771	100.0%
SPORES	52,282	76,844	24,562	47.0%
Total; Centers, U54s & SPORES	221,350	279,731	58,381	21.5%
Research Career Program	40,869	51,175	10,306	25.2%
Cancer Education	16,821	21,741	4,920	29.2%
Clinical Cooperative Groups	144,608	154,261	9,653	6.7%
Other Grants	30,378	42,023	11,645	38.3%
Subtotal, Other	232,676	269,200	36,524	15.7%
Total, Research Grants	1,982,027	2,245,533	263,506	13.3%
National Research Service Awards	56,179	57,927	1,748	3.1%
R&D Contracts	251,579	283,971	32,392	12.9%
Intramural Research	507,785	567,298	59,513	11.7%
Research Management & Support	120,586	136,509	15,923	13.2%
Cancer Prevention & Control	389,425	459,482	70,057	18.0%
Construction	3,500	3,000	-500	-14.3%
Total, NCI	3,311,081 *	3,753,720 **	442,639	13.4%
AIDS research included above	[\$244,623]	[\$255,960]	[\$11,337]	4.7%

* Does not include \$3.5 million received by the NCI from the US Postal Service's sale of the Breast Cancer Stamp

** Does not include \$4.8 million received by the NCI from the US Postal Service's sale of the Breast Cancer Stamp

Percent Share of Total NCI Dollars

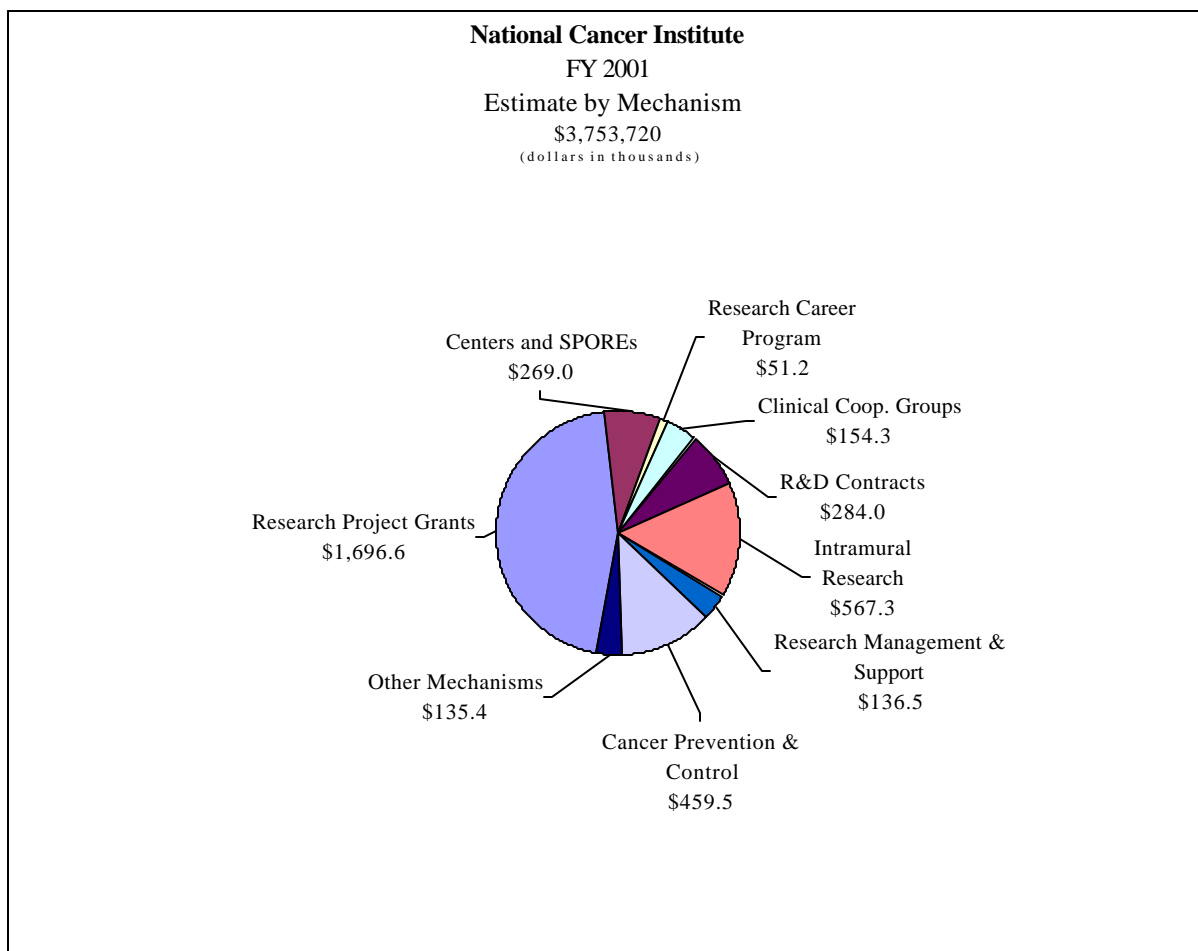
Summary Points

- The mechanism shares of the total budget remained relatively stable from FY 2000 to 2001
- The two largest intramural divisions, DCS and DBS, were consolidated at the end of FY 2001; this may assist in reaching the FY 2002 goal of reducing Intramural Research to less than 15%

Percent Share of Total NCI Dollars

	1997	1998	1999	2000	2001
Research Project Grants	47.0%	48.7%	47.1%	46.1%	45.2%
Cancer Centers *	5.5%	5.3%	5.3%	5.1%	5.1%
SPOREs	1.2%	1.2%	1.5%	1.6%	2.0%
Clinical Cooperative Groups	3.7%	3.7%	4.2%	4.4%	4.1%
Intramural Research	17.3%	17.3%	15.5%	15.3%	15.1%
R&D Contracts	7.7%	6.8%	7.4%	7.6%	7.6%
Cancer Prevention & Control	9.7%	9.9%	10.6%	11.8%	12.2%
Other Mechanisms	7.9%	7.1%	8.5%	8.1%	8.6%

* Does not include funds used for Specialized Cancer Centers (U54)



Funding Trends

Summary Points

- The NCI budget has increased by \$1.36 billion or 57% from FY 1997
- Funds for Research Project Grants, Cancer Centers, and R&D Contracts have grown just below the same rate as the total NCI budget
- SPOREs, Clinical Cooperative Groups, and Cancer Prevention & Control have experienced percentage increases greater than the total NCI growth
- Intramural Research has expanded at the lowest percentage of all mechanisms

Historical Funding Trends (in millions)

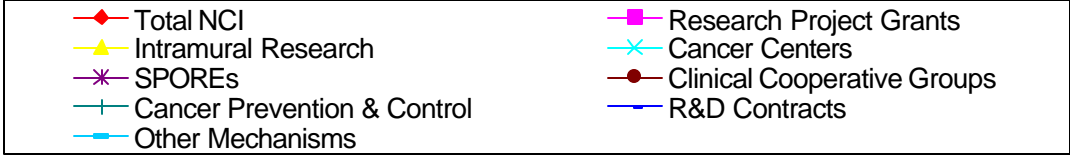
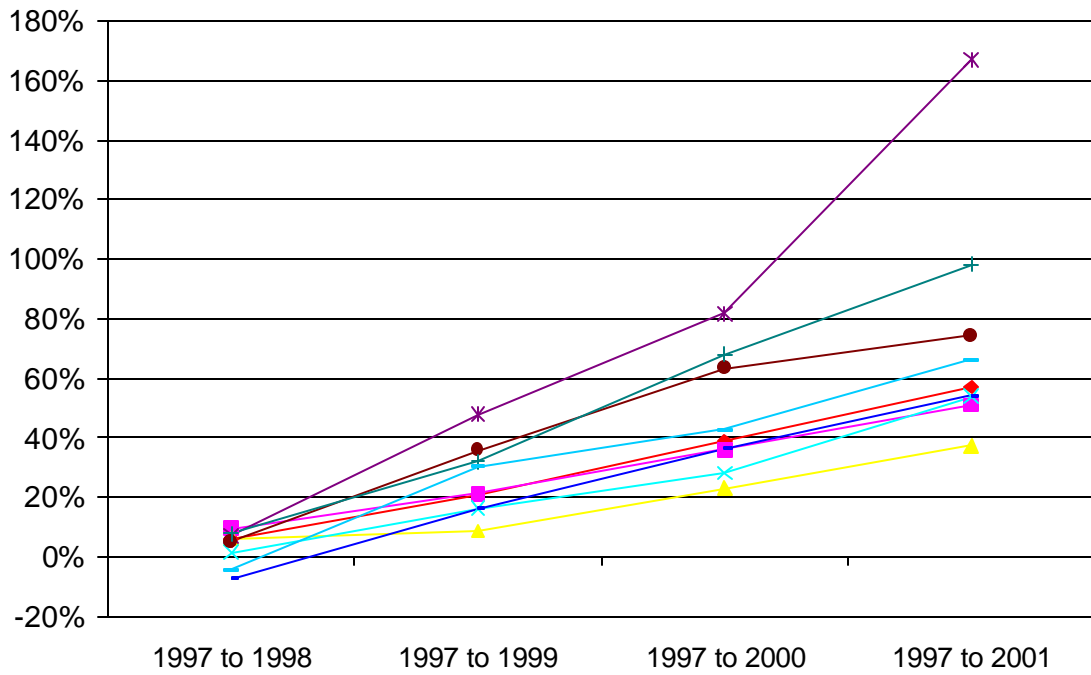
	1997	1998	1999	2000	2001
Total NCI	\$2,389.1	\$2,527.5	\$2,891.6	\$3,311.1	\$3,753.7
Research Project Grants	1,123.3	1,230.8	1,361.8	1,528.0	1,696.4
Intramural Research	412.5	437.8	448.2	507.8	567.3
Cancer Centers *	131.9	134.0	153.2	169.1	192.1
SPOREs	28.8	30.9	42.6	52.3	76.8
Clinical Cooperative Groups	88.5	93.0	120.2	144.6	154.3
Cancer Prevention & Control	231.9	249.9	306.3	389.4	459.5
R&D Contracts	184.3	171.1	214.1	251.6	284.0
Other Mechanisms	187.9	180.0	245.2	268.3	323.1

% Growth by Mechanism

	1997 to 1998	1998 to 1999	1999 to 2000	2000 to 2001	1997 to 2001
Total NCI	5.8%	14.4%	14.5%	13.4%	57.1%
Research Project Grants	9.6%	10.6%	12.2%	11.0%	51.0%
Intramural Research	6.1%	2.4%	13.3%	11.7%	37.5%
Cancer Centers *	1.6%	14.3%	10.4%	20.0%	45.6%
SPOREs	7.3%	37.9%	22.8%	46.9%	167.0%
Clinical Cooperative Groups	5.1%	29.2%	20.3%	6.7%	74.3%
Cancer Prevention & Control	7.8%	22.6%	27.1%	18.0%	98.1%
R&D Contracts	-7.2%	25.2%	17.5%	12.9%	54.1%
Other Mechanisms	-4.2%	36.2%	9.4%	20.4%	72.0%

* Does not include funds used for Specialized Cancer Centers (U54)

National Cancer Institute
 Historical Funding Trends
 Cumulative Growth



Research Project Grants

Summary Points

- 89% of competing dollars supported grants awarded within the established payline; 11% supported grants as an exception to the payline
- RFA funds increased from the FY 2000 dollar level and were up slightly to 6.8% as a percent of FY 2001 competing dollars
- Monies used to fund exception grants remained relatively steady in FY 2001 at 10.6%
- \$8.1 million of funds for Accelerated Executive Review permitted the award of 24 grants
- Research applications submitted to NCI increased by approximately 4%

Research Project Grants

(in thousands)

	2000*		2001**	
	No.	Amount	No.	Amount
Total funding for RPGs	4,526	\$1,528,001	4,695	\$1,696,602
SBIR/STTR	306	\$67,090	328	\$75,833
Funding for RPGs without SBIR/STTR Program	4,220	\$1,460,911	4,367	\$1,620,769
Continuation or noncompeting grants funded	3,101	\$1,040,265	3,191	\$1,148,844
Competing grants funded	1,119	\$387,083	1,176	\$417,233
Administrative Supplements		\$23,721		\$36,831
Partial assessment for DHHS Program Evaluation		\$9,842		\$17,861
Funds Set aside within competing dollars for:				
Grants within Paylines:	986	\$344,779	1,077	\$373,119
Traditional R01	724	\$216,671	759	\$254,218
Program Projects (P01)	39	\$73,307	26	\$46,094
RFA grants	56	\$24,450	55	\$28,576
Share of competing grant funds		6.32%		6.85%
Exception Grants	133	\$42,304	99	\$44,114
Share of competing grant funds		10.93%		10.57%
Competing Application Requests	3,979	\$1,477,373	4,421	\$1,653,483
Funding Success Rate	28%		27%	
Percentile funding for R01 grants (R01)	22nd		22nd	
Average Cost-Competing		\$346		\$355
Average reduction from recommended/requested levels		-10%		-16%

* Does not include \$3.5 Million received by the NCI from the US Postal Service's sale of the Breast Cancer Stamp

** Does not include \$4.8 Million received by the NCI from the US Postal Service's sale of the Breast Cancer Stamp

Grant Funding Paylines

RPG Mechanisms:	2000	2001	
R01 Traditional Grants	24th	22nd	22nd percentile
P01 Program Projects	135	162*	N/A*** priority score
R03 Small Grants	225	225	225 priority score
R21 Exploratory Phase I	215	200	200 priority score
R33 Exploratory Phase II	200	200	170 priority score
R41/R42 STTR	250	170	237 priority score
R43/R44 SBIR	275	250/220**	250 priority score

* Changed to 159 for the 3rd round of applications

** Changed to 220 for the 3rd round of applications

*** NCI no longer sets a formal payline for P01 grants

Research Career Awards – “K” Program

Summary Points

- The Research Career Award mechanism had a 25% growth in FY2001
- Both K04 Research Career Development and K11 Physician Investigator Awards have been completely phased out as planned
- NCI began using K05 Research Scientist Awards and K25 Mentored Quantitative Career Development Awards in FY 2001
- K22 Transition Career Development Awards doubled in size as the program grows from its inception in FY 2000
- NCI’s effort in FY 2001 towards the K30 Institutional Curriculum Awards, which are administered by the National Heart, Lung, and Blood Institute, was once again \$1.6 million

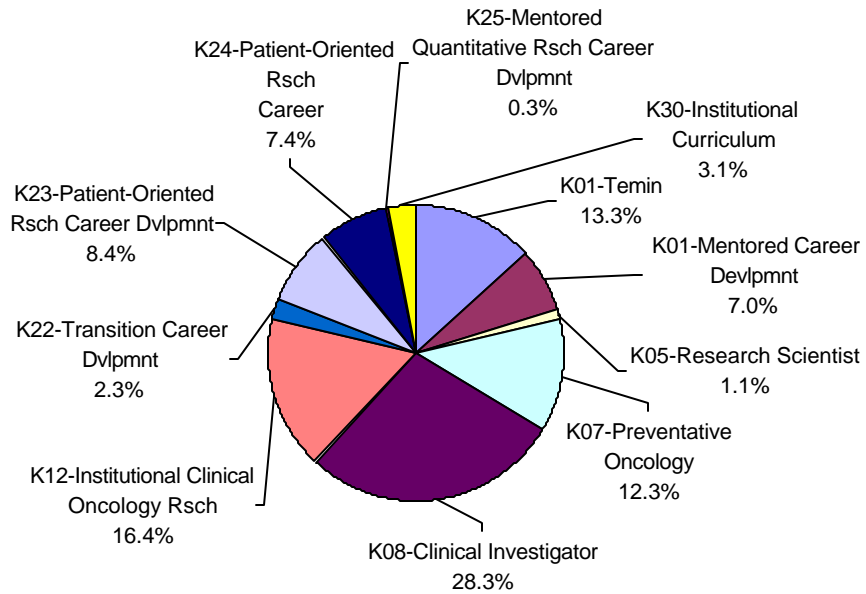
Research Career Awards ("K" Program)

(in thousands)

		2000		2001	
		No.	Amount	No.	Amount
K01	Temin Awards	37	\$4,729	52	\$6,805
K01	Minority Mentored Career Development Award	21	2,660	26	3,593
Subtotal K01s		58	7,389	78	10,398
K04	Research Career Development (phased out)	2	127	0	0
K05	Research Scientist Award	0	0	5	550
K07	Preventive Oncology	44	4,469	57	6,309
K08	Clinical Investigator	134	14,401	124	14,500
K11	Physician Investigator (phased out)	2	181	0	0
K12	Institutional Clinical Oncology Research	21	7,670	21	8,409
K22	Transition Career Development	4	560	8	1,190
K23	Patient-Oriented Career	23	2,964	33	4,290
K24	Patient-Oriented Career -- Mid Career	29	3,108	34	3,796
K25	Mentored Quantitative Research Career Development Award	0	0	1	133
Subtotal Research Career Program		317	40,869	361	49,575
K30	Institutional Curriculum Awards- Administered by NHLBI	8	1,600 *	8	1,600
Total Research Career Program		325	42,469	369	51,175

* This was funded under the R&D Contract Mechanism in FY 2000

National Cancer Institute
FY 2001 Research Career Awards
(dollars in thousands)



Research Dollars by Various Cancers

Summary Points

- Funding listed below for various cancers may overlap
- Funding for cancers listed below do not represent the entire NCI budget

Research Dollars by Various Cancers

(in millions)

	1996	1997	1998	1999	2000	2001 Estimate	% Chg 00 to 01
Total NCI	\$2,254.9	\$2,389.1	\$2,551.3	\$2,891.0	\$3,311.1	\$3,753.7	13.4%
Brain & Central Nervous System	41.6	46.1	54.3	63.5	71.9	75.5	5.0%
Breast Cancer	317.5	332.0	348.7	387.2	438.7	463.8	5.7%
Cervical Cancer	51.6	55.8	58.0	66.3	67.0	74.2	10.7%
Colorectal Cancer	98.0	103.2	121.0	152.9	175.8	190.0	8.1%
Head and Neck	34.3	38.5	41.9	45.9	47.0	50.8	8.1%
Hodgkin's Disease	8.0	8.1	8.3	8.2	9.4	10.0	6.4%
Leukemia	79.3	91.2	103.4	122.2	141.7	150.4	6.1%
Liver Cancer	31.4	35.3	38.1	39.8	46.2	50.1	8.4%
Lung Cancer	119.4	132.4	139.8	151.0	175.0	189.0	8.0%
Melanoma	36.0	43.3	50.3	60.1	67.9	72.0	6.0%
Non Hodgkin's Lymphoma	49.9	52.7	57.1	66.2	70.4	74.4	5.7%
Ovarian Cancer	36.5	41.7	40.8	56.5	65.5	69.4	6.0%
Pancreatic Cancer	8.1	10.2	14.2	17.3	20.0	21.5	7.5%
Prostate Cancer	71.7	82.3	86.9	135.7	203.2	258.0	27.0%
Stomach Cancer	7.6	9.3	8.2	7.6	6.8	8.5	25.0%
Uterine Cancer	8.1	8.1	12.2	13.8	16.0	16.5	3.1%

National Cancer Institute

Director=s Biography

Andrew C. von Eschenbach, M.D.

Andrew C. von Eschenbach, M.D., the 12th Director of the National Cancer Institute in its 64 history, is a nationally recognized urologic surgeon who formerly directed the Genitourinary Cancer Center and the Prostate Cancer Research Program at The University of Texas M.D. Anderson Cancer Center in Houston, Texas. He also served as special assistant for external affairs to M.D. Anderson's president and held the Roy M. and Phyllis Gough Huffington Clinical Research Distinguished Chair in Urologic Oncology.

A native of Philadelphia, Dr. von Eschenbach received his medical degree from Georgetown University Medical School in 1967. He completed residencies in general surgery and urology at Pennsylvania Hospital in Philadelphia, then was an instructor in urology at the University of Pennsylvania School of Medicine. He served as a Lieutenant Commander in the U.S. Navy Medical Corps.

Dr. von Eschenbach went to M.D. Anderson Cancer Center for a fellowship in urologic oncology in 1976 and was invited to join the faculty the following year. From 1983 to 1996, he was Chairman of the Department of Urology and, since 1985, has also been a Consulting Professor in the Department of Cancer Biology.

In 1996, Dr. von Eschenbach was named the founding director of M.D. Anderson's Prostate Cancer Research Program, which has 60 scientists and clinicians collaborating on integrated translational research in the biology, treatment, epidemiology and prevention of the disease. From 1997 to 1999, he also served as Vice President for Academic Affairs and then as Executive Vice President and Chief Academic Officer, leading a faculty of almost 1,000 cancer researchers and clinicians.

He was a founding member of the National Dialogue on Cancer and prior to his accepting the position as NCI Director, he was President-elect of the American Cancer Society. Dr. von Eschenbach has contributed more than 200 articles and books and chapters to the scientific literature.

Former Directors of the National Cancer Institute

Richard D. Klausner, M.D.
August 1995-September 2001

Dr. Klausner was appointed as the Director of the National Cancer Institute (NCI) on August 1, 1995. From 1984 until 1997 he was Chief of the Cell Biology and Metabolism Branch of the National Institute of Child Health & Human Development. Dr. Klausner is well known for his contributions to multiple aspects of cell and molecular biology. Dr. Klausner's research has illuminated the genetics and biochemistry of metals as essential but toxic nutrients for virtually all forms of life, has illuminated the pathways by which molecules traffic and speak to each other within the cell, and has described novel mechanisms by which tumor suppressor genes function.

Samuel Broder, M.D.
December 1988-March 1995

Dr. Broder joined NCI in 1972 as a Clinical Associate in the Metabolism Branch. In 1981, he became Associate Director for NCI's Clinical Oncology Program. In 1985 he led the laboratory team that discovered the therapeutic effects of AZT and other drugs now approved for the treatment of AIDS including DDI and DDC.

Vincent T. DeVita, Jr., M.D.
January 1980 - June 1980 (Acting)
July 1980 - August 1988

Dr. DeVita joined NCI in 1963 as a Clinical Associate in the Laboratory of Chemical Pharmacology. He served NCI as head of the Solid Tumor Service, Chief of the Medicine Branch, Director of the Division of Cancer Treatment and Clinical Director prior to his appointment as Director of NCI.

Arthur Canfield Upton, M.D.
July 1977 - December 1979

Prior to his tenure as NCI Director, Dr. Upton served as Dean of the School of Basic Health Sciences at the State University of New York at Stony Brook.

Frank Joseph Rauscher, Jr., Ph.D.
May 1972 - October 1976

Dr. Rauscher served as Scientific Director for Etiology, NCI, prior to his appointment as Director of NCI in 1972.

Carl Gwin Baker, M.D.
November 1969 - July 1970 (Acting)
July 1970 - April 1972

During his tenure with PHS, Dr. Baker served as Scientific Director for Etiology, NCI, and as Acting Director of NCI prior to his appointment as Director in July 1970.

Kenneth Milo Endicott, M.D.
July 1960 - November 1969

Dr. Endicott served as Chief of the Cancer Chemotherapy National Service Center, PHS, and as Associate Director, NIH, prior to being appointed Director, NCI in July 1960.

John Roderick Heller, M.D.
May 1948 - June 1960

Dr. Heller joined PHS in 1934 and became Chief of the Venereal Disease Division prior to his appointment as Director of NCI in 1948.

Leonard Andrew Scheele, M.D.
July 1947 - April 1948

Dr. Scheele served in various capacities during his tenure with PHS prior to his appointment as Assistant Chief and, subsequently, Director of NCI in July 1947.

Roscoe Roy Spencer, M.D.
August 1943 - July 1947

Dr. Spencer became NCI's first Assistant Chief and, subsequently, was appointed Director of the Institute in 1943.

Carl Voegtlin, Ph.D.
January 1938 - July 1943

Dr. Voegtlin served as Professor of Pharmacology and Chief of the Division of Pharmacy at the Hygienic Laboratory prior to becoming the first Director of NCI in 1938.

National Cancer Advisory Board

Membership and Term

- 2002 **Chairperson**
Phillip A. Sharp, Ph.D.
Center for Cancer Research
Massachusetts Institute of Technology
Cambridge, Massachusetts 02139
- 2006 James O. Armitage, M.D.
College of Medicine
University of Nebraska Medical Center
Omaha, Nebraska 68198-6545
- 2002 Richard J. Boxer, M.D.
Medical College of Wisconsin
Clinical Professor, Surgery/Urology
Milwaukee, Wisconsin 53209
- 2004 Stephen C. Duffy
American Academy of Facial Plastic
& Reconstructive Surg. & International
Federation of Facial Plastic Surg. Societies
Alexandria, Virginia 22314
- 2006 Ralph S. Freedman, M.B.B.Ch., Ph.D.
Department of Gynecologic Oncology
The University of Texas
Houston, Texas 77030
- 2006 James H. French, M.D.
The Center for Plastic Surgery
Annandale, Virginia 22003
- 2006 Samir Abu-Ghazaleh, M.D.
Avera Cancer Institute
Sioux Falls, South Dakota 57105
- 2004 Elmer E. Huerta, M.D., M.P.H.
Cancer Risk Assess. & Screening Ctr.
Washington Hospital Center
Washington, DC 20010
- 2002 Howard K. Koh, M.D., M.P.H., FACP
Massachusetts Department of Public Health
Boston, Massachusetts 02180
- 2002 Frederick P. Li, M.D.
Division of Cancer Epidemiology & Control
Dana-Farber Cancer Institute - Smith 201
Boston, Massachusetts 02115
- 2004 The Honorable James E. McGreevey
Governor-Elect
State of New Jersey
Trenton, New Jersey 08625
- 2002 Sandra Millon-Underwood, Ph.D., R.N.
University of Wisconsin
Milwaukee School of Nursing
Milwaukee, Wisconsin 53211
- 2006 Arthur W. Nienhuis, M.D.
St. Jude Children's Research Hospital
Memphis, Tennessee 38105
- 2004 Larry Norton, M.D.
Medical Breast Oncology
Evelyn H. Lauder Breast Center
Memorial Sloan-Kettering Cancer Center
New York, New York 10021
- 2004 Amelie G. Ramirez, Dr. P. H
Department of Medicine
Chronic Disease Prevention
& Control Research Center
Baylor College of Medicine
San Antonio, Texas 78230
- 2002 Ivor Royston, M.D.
Forward Ventures
San Diego, California 92121
- 2002 Ellen L. Stovall
National Coalition for Cancer Survivorship
Silver Spring, Maryland 20910
- Executive Secretary
Marvin R. Kalt, Ph.D.
- Committee Management Officer
Claire Benfer

National Cancer Advisory Board (Continued)

Ex Officio Members

Ann Brown
Chairman
Consumer Product Safety Commission
Bethesda, Maryland 20842

The Honorable Elaine Chao, M.B.A.
Secretary of Labor
Washington, DC 20210

The Honorable Dr. J. Jarrett Clinton
Acting Assistant to the Assistant Secretary of Defense
for Health Affairs
Pentagon
Washington, DC 20301-1200

Larry Fine, M.D., Dr., Ph.
Acting Director
National Institute for Occupational
Safety and Health (NIOSH)
Washington, DC 20201

The Honorable Dr. Thomas L. Garthwaite
Under Secretary for Health
Veterans Health Administration
Department of Veterans Affairs
Washington, DC 20420

Ruth Kirschstein, M.D.
Acting Director
National Institutes of Health
Bethesda, Maryland 20892

Rachel Levinson
Assistant Director for Life Sciences
Office of Science and Technology Policy
The White House
Washington, DC 20506

Kenneth Olden, Ph. D.
Director
National Institute of Environmental
Health Sciences
National Institutes of Health
Research Triangle Park, North Carolina 27709

Ari Patrinos, Ph. D.
Deputy Director, Office of Biological
and Environmental Research
Office of Energy Research
U.S. Department of Energy
Washington, DC 20585

Bernard A. Schwetz, D.V.M., Ph.D.
Acting Principal Deputy Director
Food and Drug Administration
Rockville, Maryland 20857

The Honorable Tommy G. Thompson
Secretary
Department of Health and Human Services
Washington, DC 20201

The Honorable Christine Todd Whitman
Administrator
Environmental Protection Agency
Washington, DC 20460

Alternates to Ex Officio Members

Steven K. Akiyama, Ph.D.
Associate Director for Research and Training
Division of Intramural Research
National Institute of Environmental Health Sciences
National Institutes of Health
Research Triangle Park, North Carolina 27709
(Kenneth Olden, Ph.D. - NIEHS)

Michael A. Babich, Ph.D.
Directorate for Health Science
U.S. Consumer Product Safety Commission
Bethesda, Maryland 20814
(Ann Brown U.S. CPSC)

Peter Kirchner, Ph.D.
Program Manager
Office of Biological & Environmental Research
Division of Medical Science
U.S. Department of Energy
Germantown, Maryland 20874-1290
(Ari Patrinos, Ph.D. - DOE)

Alison Martin, M.D.
Division of Oncology FDA
Food and Drug Administration
Rockville, Maryland 20857
(Bernard A. Schwetz, D.V.M., Ph.D. - FDA)

Yvonne Maddox, Ph.D.
Acting Deputy Director
National Institutes of Health
Bethesda, Maryland 20892
(Ruth Kirschstein, M.D.)

Hugh W. McKinnon, M.D., M.P.H.
Associate Director for Health
National Risk Management Research
Laboratory (MD-225)
U.S. Environmental Protection Agency
Cincinnati, Ohio 45268
(The Honorable Christine Todd Whitman - EPA)

T. G. Patel, M.D., M.A.C.P.
Captain MC USN (Retired)
Program Chief
Veterans Health Administration
Department of Veterans' Affairs
Washington, DC 20420
(The Honorable Dr. Thomas L. Garthwaite - VA)

John M. Powers, M.D.
Program Director, Quality and
Graduate Medical Education
OASD HA C&PP
Falls Church, Virginia 22041
(The Honorable Dr. J. Jarrett Clinton - DOD)

George Ruby, M.D.
Medical Officer
Office of Occupational Medicine
Department of Labor, OSHA
Washington, DC 20210
(The Honorable Elaine Chao - DOL)

Anita L. Schill, Ph.D., M.P.H., M.A., R.N., COHN-S
Senior Scientist
Office of the Director
National Institute for Occupational Safety
and Health
Washington, DC 20201
(Larry Fine, M.D., Dr.Ph. - NIOSH)

Note: Bold print represents Ex Officio Members

NCAB SUBCOMMITTEE ASSIGNMENTS

Subcommittee on Activities and Agenda

Dr. Phillip A. Sharp - Chair
Dr. Frederick P. Li
Dr. Susan M. Love
Dr. Arthur W. Neinhuis
Dr. Larry Norton
Ms. Ellen Stovall
EXECUTIVE SECRETARY: Dr. Marvin Kalt
(301) 496-5147

Subcommittee on Cancer Centers

Dr. Arthur W. Nienhuis - Chair
Dr. James O. Armitage
Dr. Richard J. Boxer
Dr. Ralph S. Freedman
Dr. Elmer E. Huerta
Dr. Larry Norton
Dr. Kenneth Olden (NIEHS, Ex Officio)
Dr. Amelie G. Ramirez
Dr. Phillip A. Sharp (Ex Officio)
EXECUTIVE SECRETARY: Dr. Brian Kimes
(301) 496-8537

Subcommittee on Clinical Investigation

Dr. Larry Norton - Chair
Dr. Samir Abu-Ghazaleh
Dr. James O. Armitage
Dr. Richard J. Boxer
Dr. Ralph S. Freedman
Dr. James H. French
Dr. Elmer E. Huerta
Dr. Susan M. Love
Dr. Alison Martin (FDA, Ex Officio)
Dr. Ivor Royston
Ms. Ellen Stovall
ACTG. EXECUTIVE SECRETARY: Dr. Ellen Feigal
(301) 496-2522

Subcommittee on Special Actions

Dr. Frederick Li - Chair
Committee of the Whole
Dr. Phillip A. Sharp (Ex Officio)
EXECUTIVE SECRETARY: Dr. Marvin Kalt
(301) 496-5147

Subcommittee on Planning and Budget

Ms. Ellen Stovall - Chair
Mr. Stephen Duffy
Dr. Howard K. Koh
Hon. James E. McGreevey
Dr. Sandra Millon-Underwood
Dr. Arthur W. Nienhuis
Dr. Amelie G. Ramirez
Dr. Phillip A. Sharp (Ex Officio)
EXECUTIVE SECRETARY: Ms. Cherie Nichols
(301) 496-5515

Ad Hoc Subcommittee on Confidentiality of Patient Data

Dr. Frederick Li - Chair
Dr. Samir Abu-Ghazaleh
Mr. Stephen C. Duffy
Dr. Howard K. Koh
Dr. Ivor Royston
Ms. Ellen Stovall
EXECUTIVE SECRETARY: Ms. Mary McCabe
(301) 496-6404

Ad Hoc Subcommittee on Communications

Dr. Susan M. Love - Chair
Dr. Richard J. Boxer
Mr. Steven C. Duffy
Dr. James H. French
Dr. Samir Abu-Ghazaleh
Dr. Elmer E. Huerta
Hon. James McGreevey
Dr. Amelie G. Ramirez
Ms. Ellen Stovall
EXECUTIVE SECRETARY: Ms. Mary McCabe
(301) 496-6404

Ad Hoc Subcommittee on Coding for Research on Minorities

Dr. Frederick Li - Chair
Dr. Elmer Huerta
Dr. Sandra Millon-Underwood
Dr. Larry Norton
Dr. Amelie G. Ramirez
EXECUTIVE SECRETARY: Ms. Mary McCabe
(301) 496-6404

Board of Scientific Counselors Intramural Programs

Subcommittee A: Clinical Sciences

Appointees	Expiration of Appointment	Appointees	Expiration of Appointment
Michael Kastan, MD, Ph.D. Chair	2004		
Carlos Arteaga, M.D.	2004	Frank McCormick, Ph.D.	2003
Leslie Bernstein, Ph.D.	2006	Daniel Medina, Ph. D.	2006
Martin Cheever, M.D.	2004	Beverly Mitchell, M.D.	2003
Michael Cleary, M.D.	2003	James Mule, Ph.D.	2003
Deborah Collyar, B.S.	2003	Richard O'Reilly, M.D.	2005
Chi Van Dang, M.D., Ph.D.	2005	Olufunmilayo Olopade, MBBS	2004
Timothy Eberlein, M.D.	2003	Alice Pentland, M.D.	2005
Elizabeth Fontham, DrPH,	2005	Arthur Porter, M.D.	2005
Stanley Hamilton, M.D.	2006	David Savitz, Ph.D.	2004
Elizabeth Holly, Ph.D.,	2003	Steven Self, Ph.D.	2006
David Hunter, MBBS	2004	Margaret Ann Tempero, M.D.	2004
Laurence Kolonel, M.D., Ph.D.	2005	Michael Thun, M.D.	2005

Executive Secretary - Abby Sandler, Ph.D.

Subcommittee B: Basic Sciences

Craig Thompson, M.D. Chair	2003		
Rafi Ahmed, Ph.D.	2006	Richard Kolodner, Ph.D.	2005
Frederick Alt, Ph.D.	2005	John Kuriyan, Ph.D.	2005
Jon Clardy, Ph.D.	2004	Brook Mossman, Ph.D.	2005
Gideon Dreyfuss, Ph.D.	2005	Dinshaw Patel, Ph.D.	2005
E. Peter Geiduschek, Ph.D.	2003	Suzanne Sandmeyer, Ph.D.	2003
Sankar Ghosh, Ph.D.	2006	Andrew Shaw, M.D.	2003
Stephen Goff, Ph.D.	2002	Ronald Swanstrom, Ph.D.	2006
Beatrice Hahn, M.D.	2002	Thea Tlsty, Ph.D.	2006
Stephen Hecht, Ph.D.	2004	Gregory L. Verdine, Ph.D.	2004
Nouria Hernandez, Ph.D.	2006	Inder Verma, Ph.D.	2002
David Housman, Ph.D.	2004	Cheryl Lyn Walker, Ph.D.	2006
Thomas Kelly, Ph.D., M.D.	2004	Eileen White, Ph.D,	2005

Executive Secretary - Florence Farber, Ph.D.

Board of Scientific Advisors Extramural Programs

Frederick R. Applebaum, M.D. Chair	2004		
David B. Abrams, Ph.D.	2003	Christine A. Miakowski, Ph.D.	2005
David S. Alberts, M.D.	2003	Enrico Mihich, M.D.	2004
Hoda Anton-Culver, Ph.D.	2003	John D. Minna, M.D.	2004
Esther H. Chang, Ph.D.	2003	Nancy E. Mueller, Sc.D.	2004
Neil J. Clendeninn, M.D., Ph.D.	2005	Franklyn G. Prendergast, M.D., Ph.D.	2002
Tom M. Curran, Ph.D	2005	Richard L. Schilsky, M.D.	2003
Mary Beryl Daly, M.D., Ph.D.	2004	Ellen V. Sigal, Ph.D.	2003
Suzanne W. Fletcher, M.D.	2002	Joseph V. Simone, M.D.	2002
Wau Ki Hong, M.D.	2002	Louise C. Strong, M.D.	2002
Susan B. Horwitz, Ph.D.	2003	Peter K. Vogt, Ph.D.	2004
Tyler E. Jacks, Ph.D.	2002	Daniel D. Von Hoff, M.D., F.A.C.P.	2002
William G. Kaelin, M.D.	2005	Barbara L. Weber, M.D.	2002
Kenneth W. Kinzler, Ph.D.	2003	Alice S. Whittemore, Ph.D.	2002
Herbert Y. Kressel, M.D.	2002	William C. Wood, M.D.	2004
Amy C. Langer, M.B.A.	2002	Robert C. Young, M.D.	2004
Caryn E. Lerman, Ph.D.	2002	Elias A. Zerhouni, M.D.	2002
W. Gillies McKenna, Ph.D.	2004		

Executive Secretary - Paulette S. Gray, Ph.D.

President's Cancer Panel

Harold P. Freeman, M.D. **2003**

Chairman
Professor of Clinical Surgery
Columbia University
College of Physicians and Surgeons
New York, New York 10032

Dennis J. Slamon, M.D., Ph.D. **2001**

Chief, Division of Hematology - Oncology
University of California at Los Angeles
Los Angeles, California 90095

Frances M. Visco, J.D. **2002**

President
National Breast Cancer Coalition
Washington, DC 20036

Maureen O. Wilson, Ph.D.

Executive Secretary

Executive Committee Members

Andrew C. von Eschenbach, M.D.

Director

Joe Harford, Ph.D.

Associate Director for Special Projects

Alan Rabson, M.D.

Deputy Director

Marvin Kalt, Ph.D.

Director, Division of Extramural Activities

Carl J. Barrett, Ph. D.

Director, Center for Cancer Research

Barbara Rimer, Dr. P.H.

Director, Division of Cancer Control and Population Sciences

Joseph Fraumeni, M.D.

Director, Division of Cancer Epidemiology and Genetics

Mary McCabe, R.N.

Acting Deputy Director for Communications

Harold P. Freeman, M.D.

Director, Center to Reduce Cancer Health Disparities

Dinah Singer, Ph.D.

Director, Division of Cancer Biology

Peter Greenwald, M.D.

Director, Division of Cancer Prevention

Ellen Feigal, M.D.

Deputy Director for Extramural Science
Acting Director, Division of Cancer Treatment and Diagnosis

John Hartinger

Acting Deputy Director for Management

Sandy Koeneman, M.S., M.P.A.

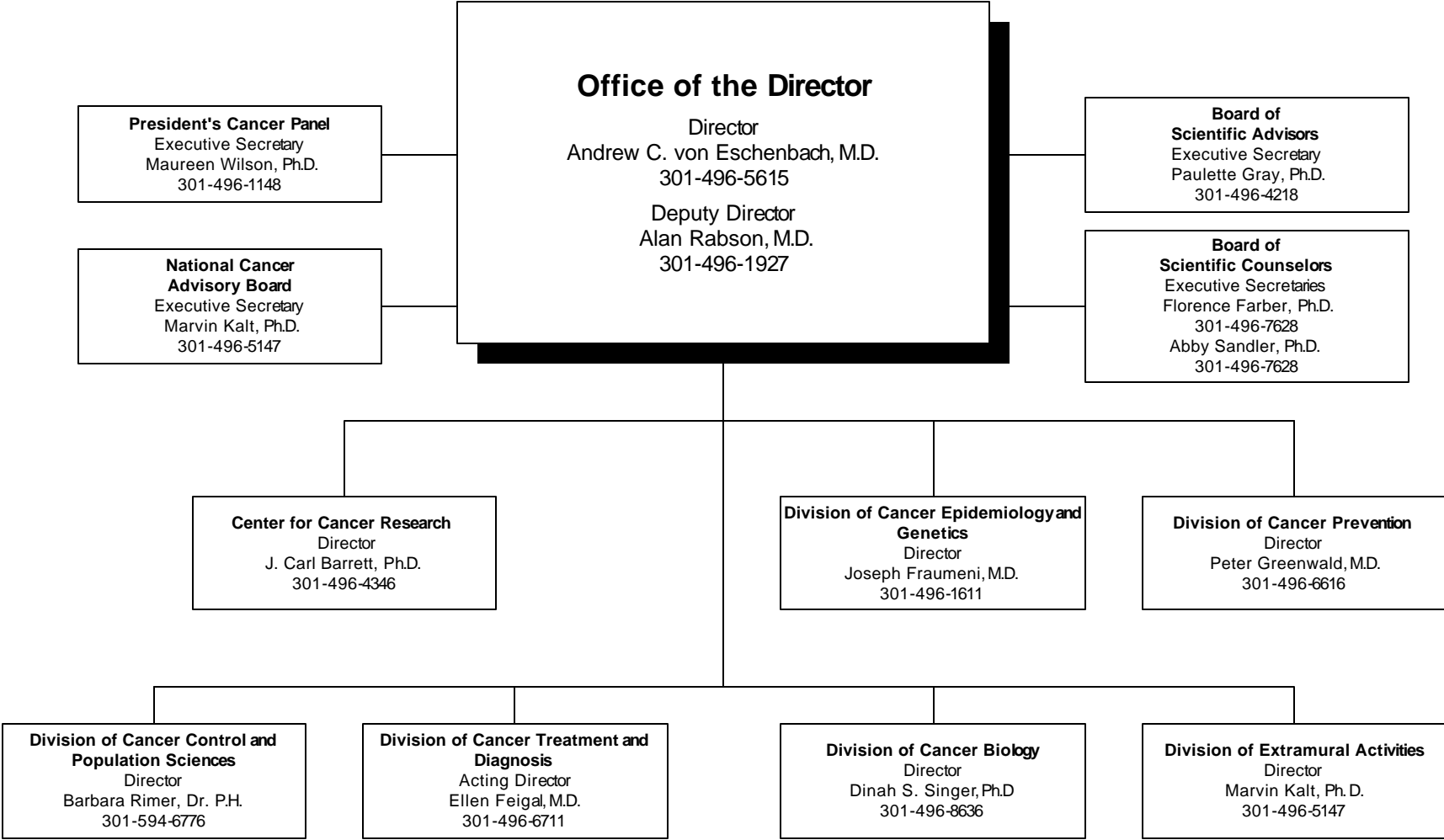
Executive Secretary

NCI Director's Consumer Liaison Group

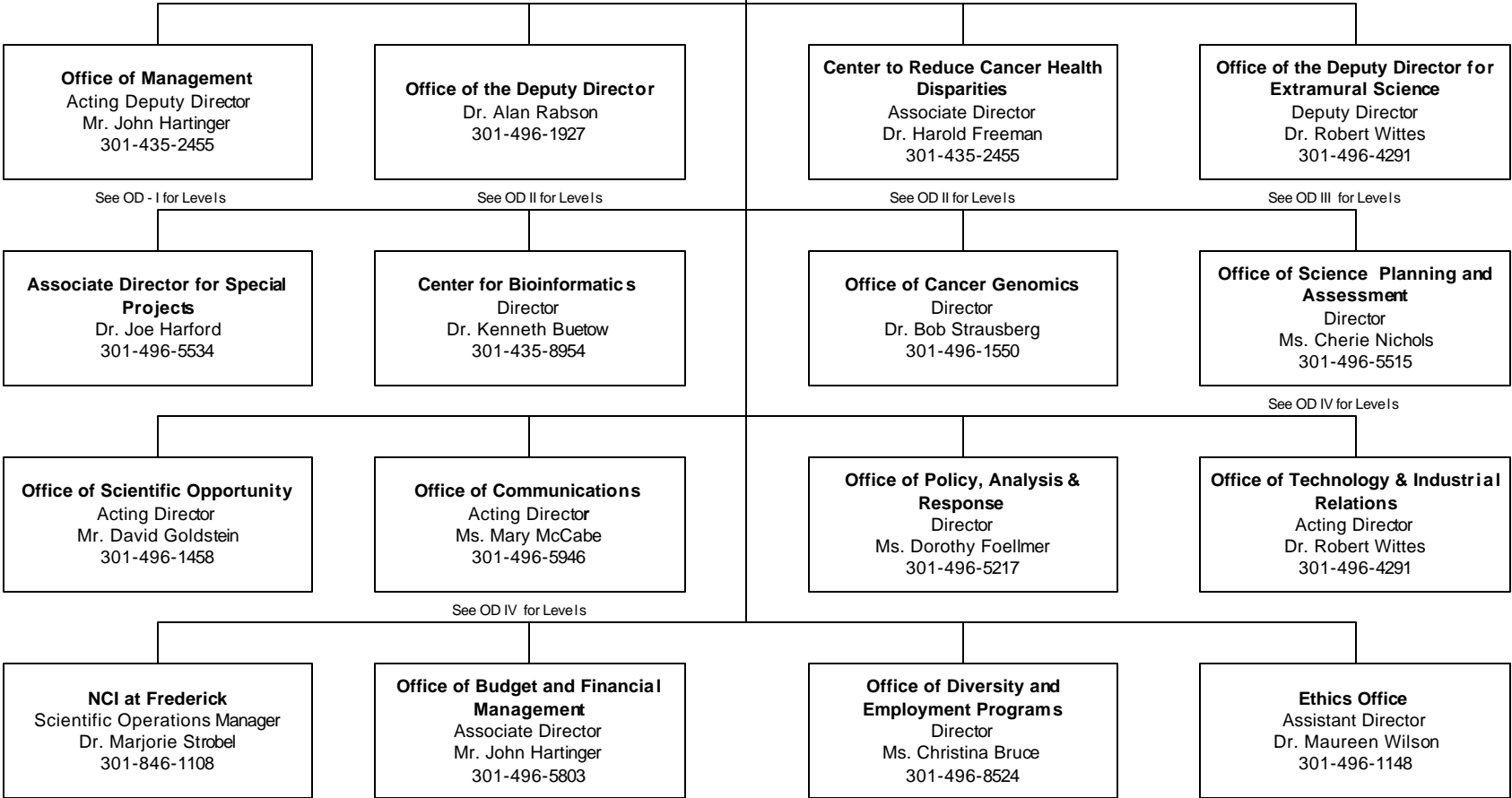
Roster 2001

Ms. Barbara K. LeStage, Chair American Cancer Society	2003	Ms. Karen Packer Marshalltown Cancer Resource Center	2004
Ms. Vernal H. Branch Y-me National Breast Cancer Organization	2004	Mr. Christopher Pablo Leukemia and Lymphoma Society	2004
Ms. Susan Lowell Butler Ovarian Cancer National Alliance	2002	Mr. Henry Porterfield US TOO! International	2003
Ms. Kathy Giusti Multiple Myeloma Research Foundation	2004	Ms. Nyrvah Richard Self Help for Women with Breast or Ovarian Cancer (SHARE)	2003
Mr. Michael Katz International Myeloma Foundation	2002	Ms. Paula Kim (Simper) Pancreatic Cancer Action Network, Inc.	2003
Ms. Ruth Lin, AOCN Morristown Memorial Hospital	2002	Mr. Doug Ulman Lance Armstrong Foundation	2004
Ms. Gena Love People Living Through Cancer, Inc.	2002	Dr. Brad Zebrack National Coalition for Cancer Survivorship & Candlelighters Childhood Cancer Foundation	2002
		Ms. Elaine Lee DCLG Executive Secretary National Cancer Institute Bethesda, MD 20892	

National Cancer Institute

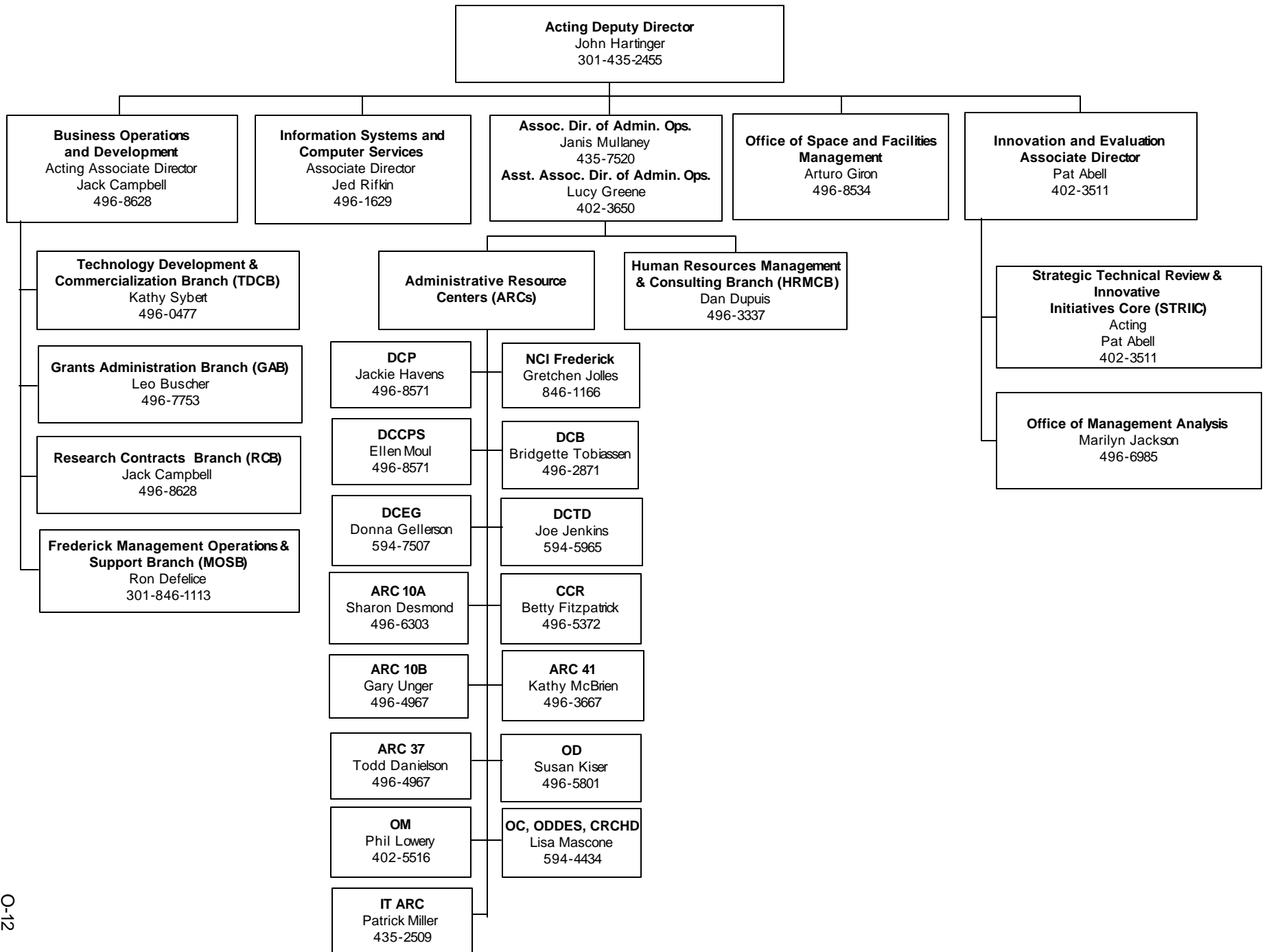


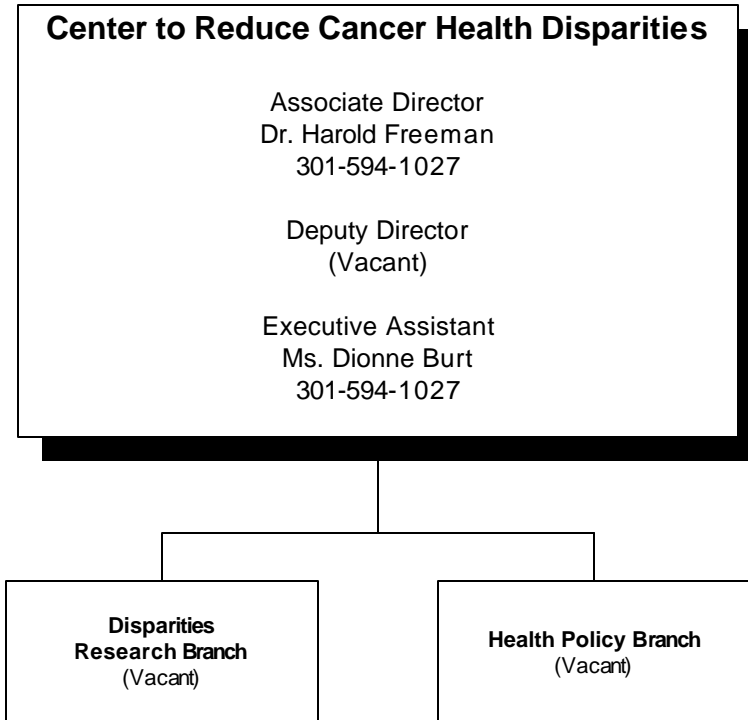
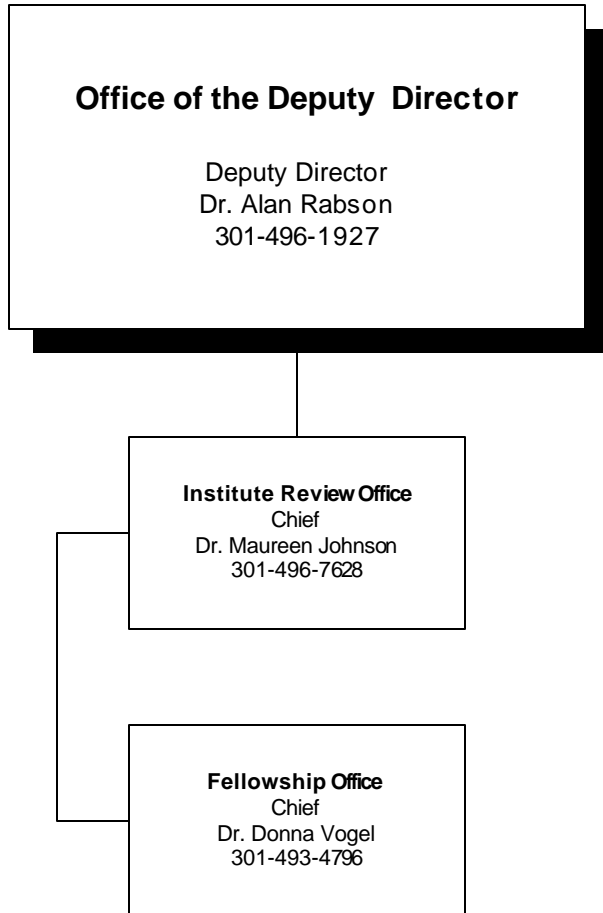
Office of the Director
 Director
 Dr. Andrew C. von Eschenbach
 301-496-5615

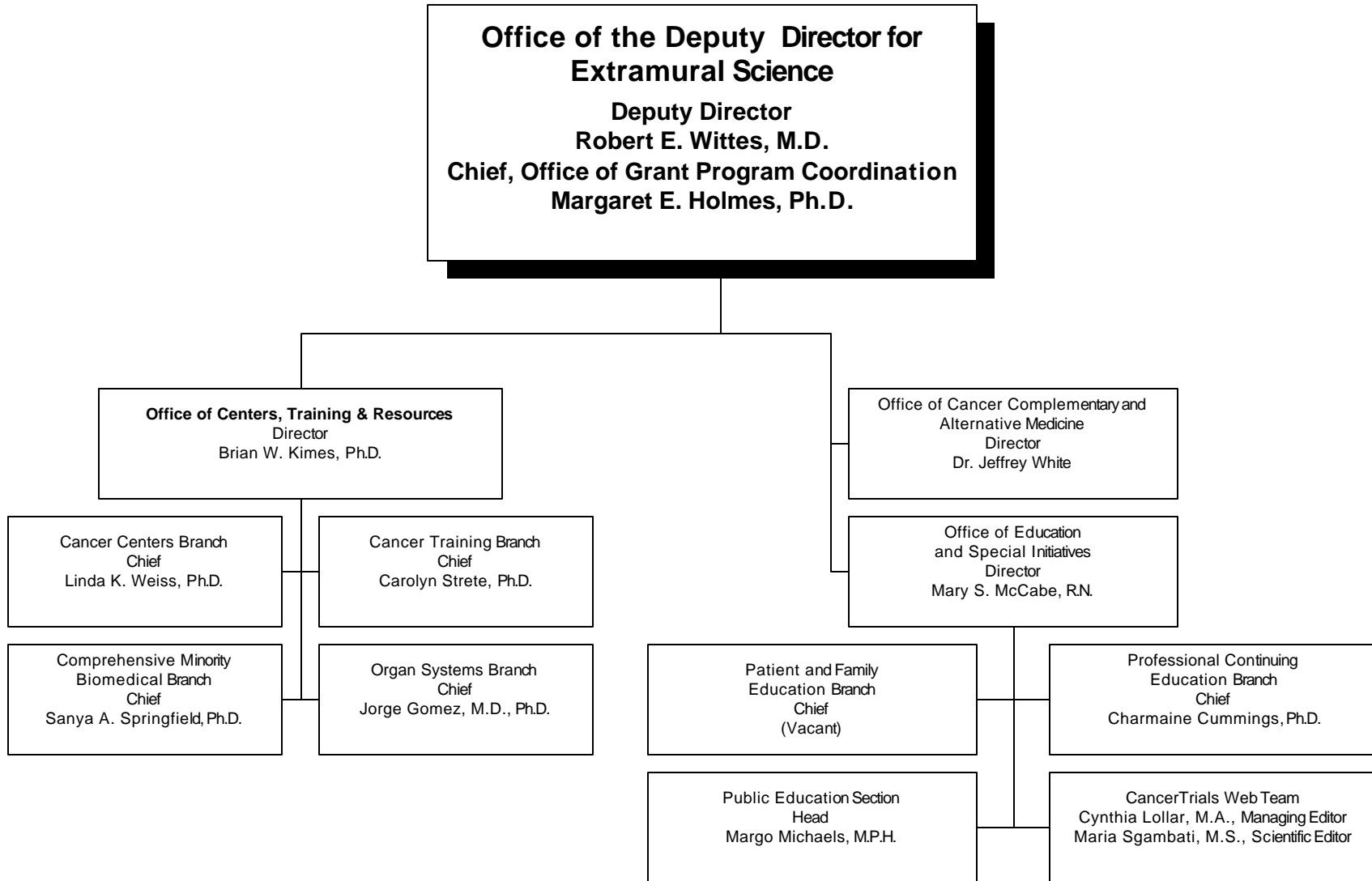


See OD IV for Levels

Office of Management







Office of Communications
Acting Director
Ms. Mary McCabe
301-496-6404

Deputy Director
Jill Bartholomew
301-496-6404

Office of Science Planning and Assessment
Director
Ms. Cherie Nichols
301-496-5515

Office of Budget and Financial Management
Associate Director
Mr. John Hartinger
301-496-5803

Cancer Information Products and Systems
Acting Associate Director
Ms. Gisele Sarosy
301-496-9096

Outreach and Partnerships
Associate Director
Ms. Elisabeth Handley
301-402-5575

Media and Public Communications
Acting Associate Director
Mr. Jim Mathews
301-496-6631

Communications Coordination
Associate Director
Ms. Nelvis Castro
301-594-5114

Technologies and Services
Associate Director
(Vacant)

Office of Women's Health
Deputy
Ms. Anna Levy
301-435-3860

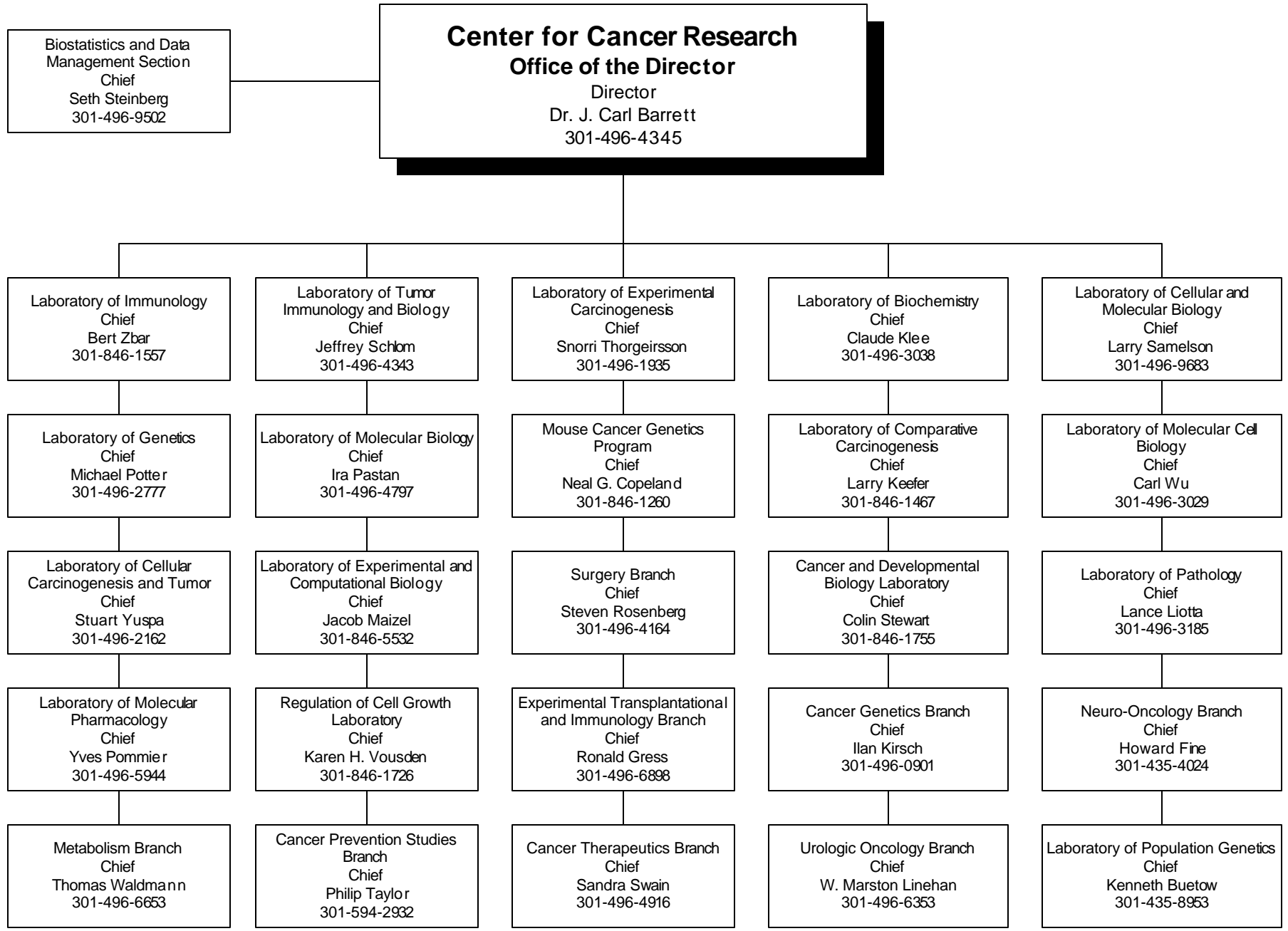
Science Planning Branch
Chief
Ms. Kathie Reed
301-435-5163

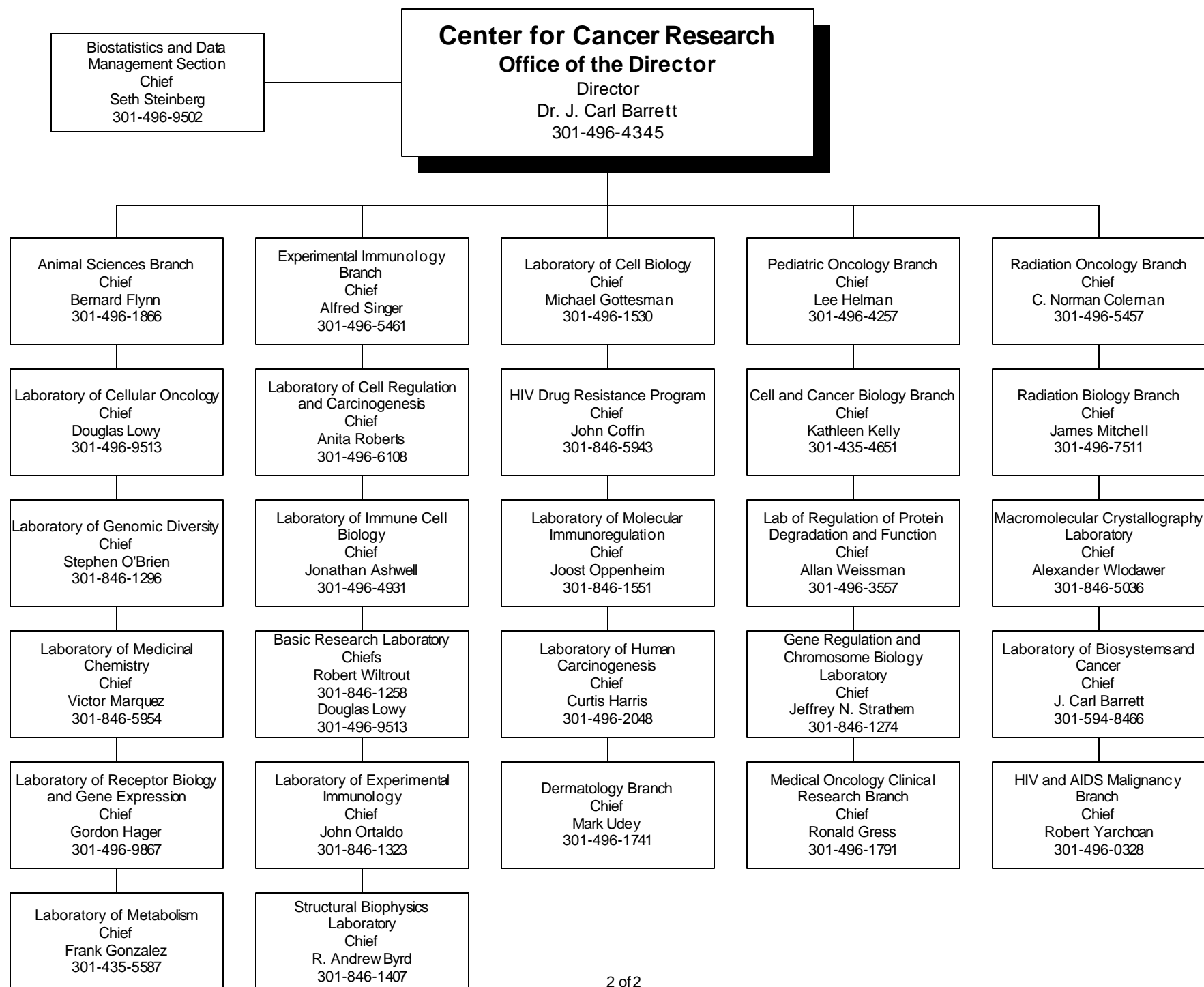
Program Assessment Branch
Chief
Dr. James Corrigan
301-496-5515

Connections Team
Team Leader
Mr. Bernard Glassman
301-402-2187

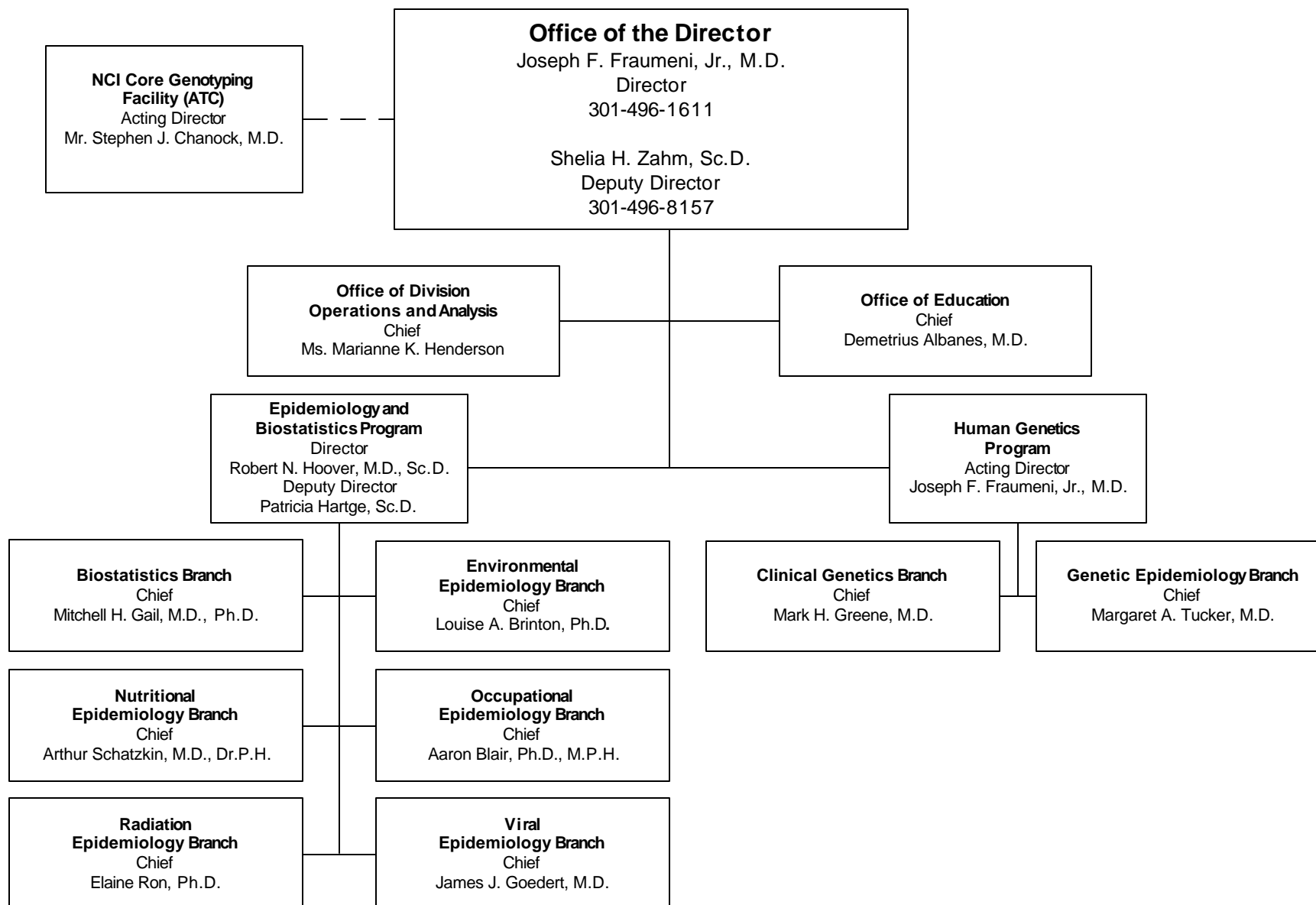
Financial Management Branch
Chief
Mr. James Dickens
301-496-5803

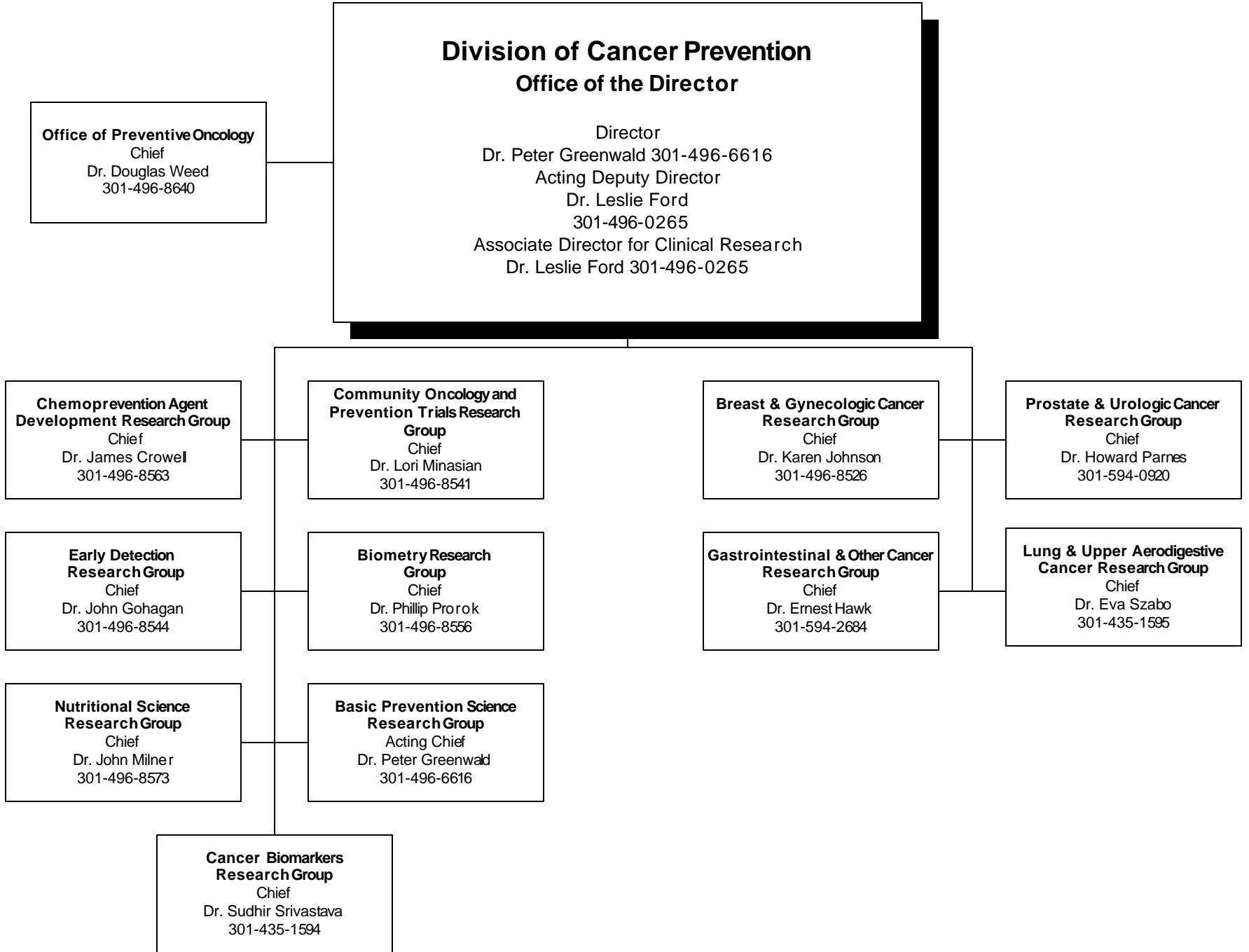
Extramural Financial Data Branch
Chief
Mr. Stephen Hazen
301-496-7660





Division of Cancer Epidemiology and Genetics

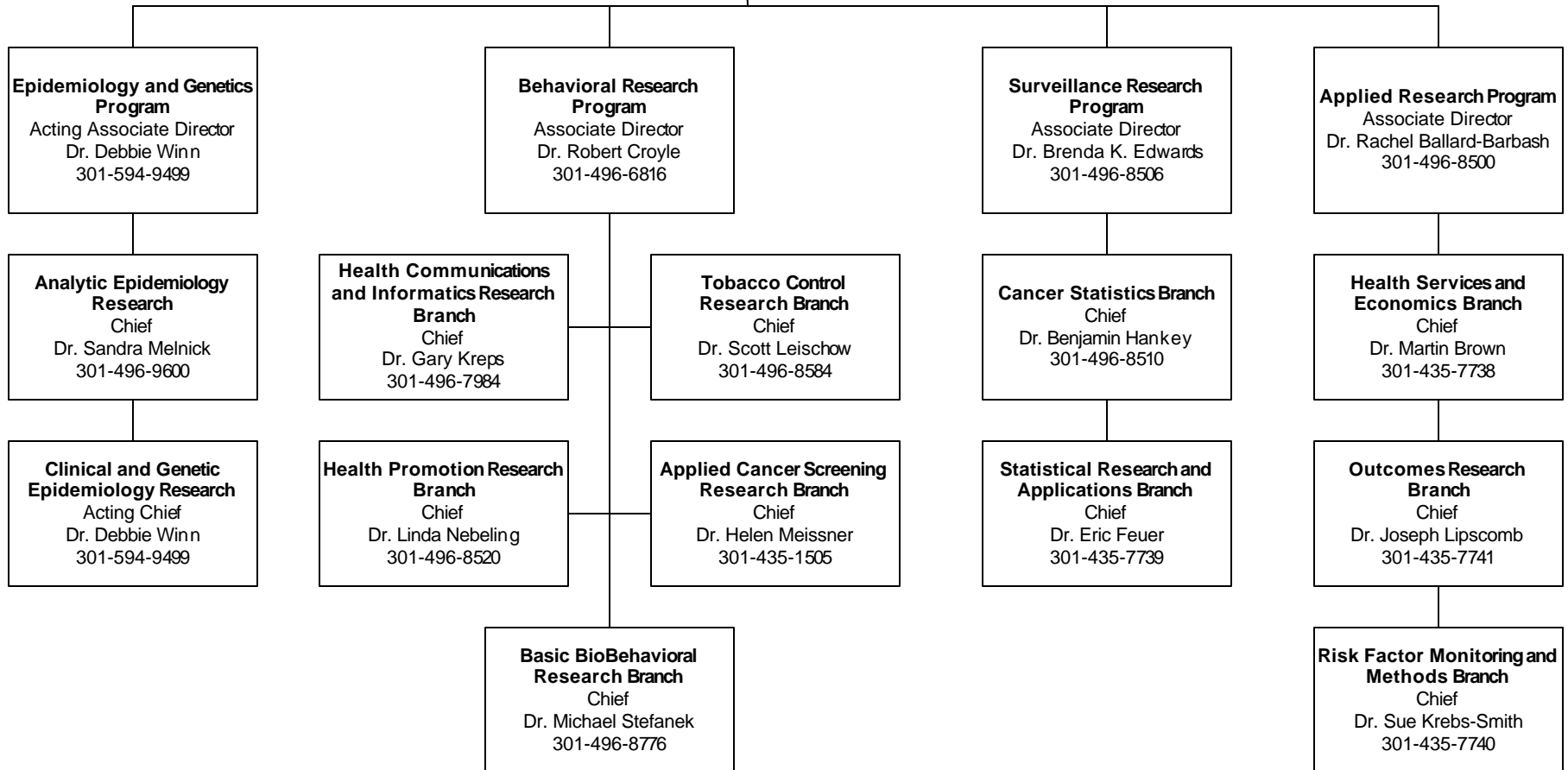




**Division of Cancer Control and
Population Sciences
Office of the Director**

Director, Dr. Barbara Rimer, 301-594-6776
Deputy Director, Dr. Robert Hiatt, 301-594-7206
Assistant Deputy Director for
Research Dissemination and Diffusion,
Dr. Jon F. Kerner, 301-594-7294

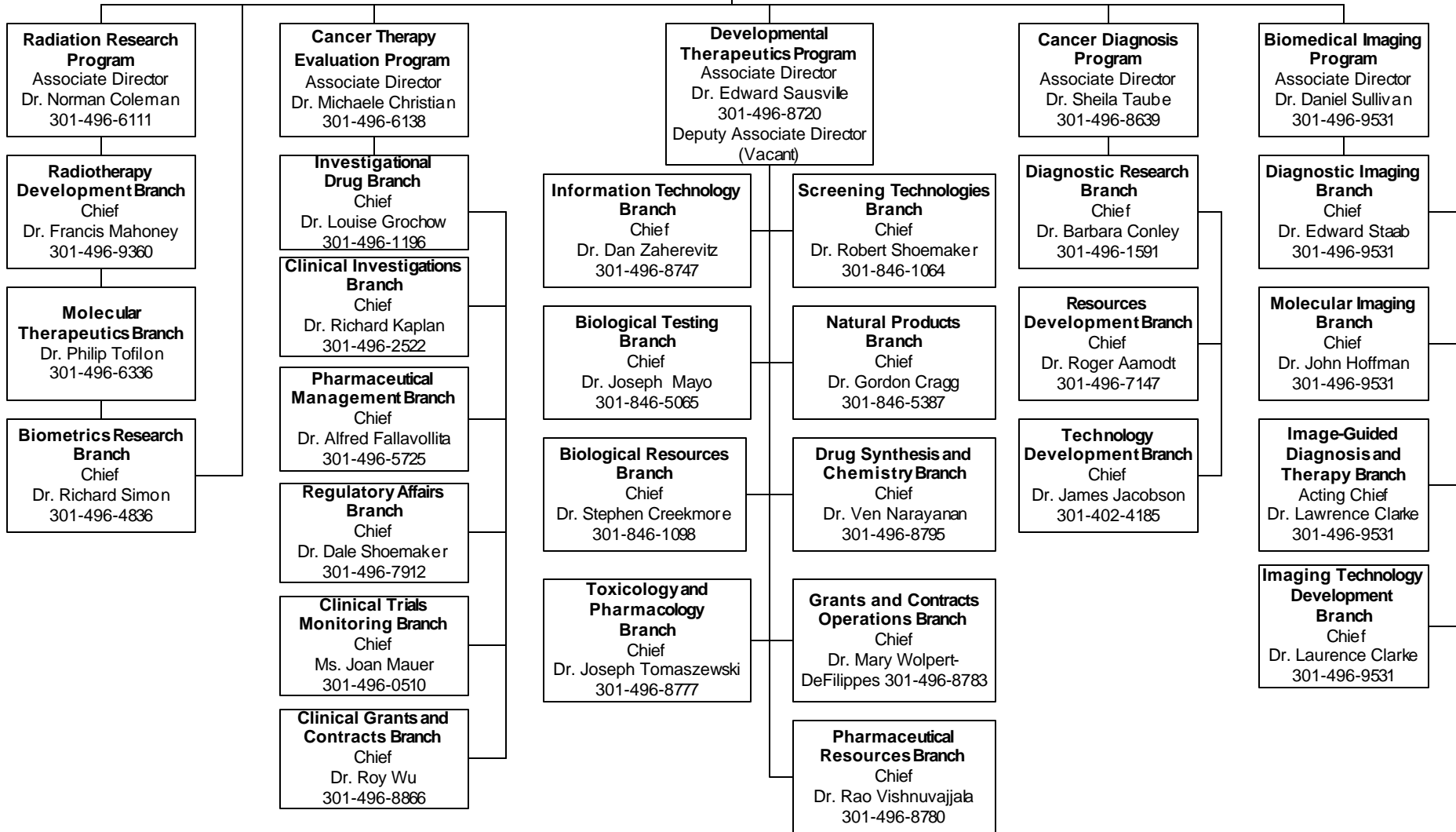
**Office of Cancer
Survivorship**
Chief
Dr. Julia H. Rowland
301-402-8186



Division of Cancer Treatment and Diagnosis Office of the Director

Acting Director
Dr. Ellen Feigal
301-496-6711

Deputy Director
Dr. Ellen Feigal
301-496-6711



**Division of Cancer Biology
Office of the Director**

Director
Dr. Dinah S. Singer
301-496-8636

Deputy Director
Dr. John A. Sogn
301-496-8636

Biological Carcinogenesis Branch
Chief
Dr. Jack Gruber
301-496-9740

Chemical and Physical Carcinogenesis Branch
Chief
Dr. David Longfellow
301-496-5471

Cancer Immunology and Hematology Branch
Chief
Dr. R.Allan Mufson
301-496-7815

Cancer Cell Biology Branch
Chief
Dr. Colette Freeman
301-496-7028

Tumor Biology and Metastasis Branch
Chief
Dr. Suresh Mohla
301-435-1878

DNA and Chromosome Aberrations
Chief
Dr. Bruce Wachholz
301-496-9326

Structural Biology and Molecular Application Branch
Chief
Dr. Daniel Gallahan
301-435-5226

Division of Extramural Activities
Director, Dr. Marvin R. Kalt
301-496-5147
Deputy Director, Dr. Paulette S. Gray
301-496-4218
Assistant Director, Dr. Cedric W. Long
301-496-9138

Office of Extramural Applications
Associate Director
Dr. Paulette S. Gray
301-496-4218

Office of Referral, Review and Program Coordination
Associate Director
Ms. Diane Bronzert
301-435-5655

Applied Information Systems Branch
Chief
Mr. James W. Seach
301-496-7047

Research Analysis and Evaluation Branch
Chief
Ms. Rosemary Cuddy
301-594-1110

Grants Review Branch Chief
Dr. Olivia T. Preble-Bartlett
301-594-2501

Special Review and Resources Branch
Chief
Dr. Kirt J. Vener
301-496-7174

Program Coordination and Referral Branch
Chief
Dr. Ray Bramhall
301-594-1403

Applications Development and Operations Section
Chief
Mr. Gregory P. Fischetti
301-594-1067

Technical Operations Section
Chief
Ms. Diane Ostrow
301-594-1124

Research Program Review Section
Chief
Dr. Virginia Wray
301-496-9236

Information Management Section
Chief
Mr. Amir Sahar-Khiz
301-594-1331

Research Documentation Section
Chief
Ms. Brenda Underwood
301-594-1119

Research Resources Review Section
Chief
Dr. David Maslow
301-496-2330

Inquiry and Reporting Section
Chief
Ms. Marilyn Gaston
301-594-1111

Number of Deaths for the Five Leading Cancer Sites by Age Group and Sex

All Ages		Under 15		15-34		35-54		55-74		75+	
Male	Female	Male	Female	Male	Female	Male	Female	Male	Female	Male	Female
Lung & Bronchus 91,397	Lung & Bronchus 63,075	Leukemia 259	Leukemia 204	Leukemia 559	Breast 513	Lung & Bronchus 8,432	Breast 9,347	Lung & Bronchus 51,303	Lung & Bronchus 33,012	Lung 31,530	Lung 24,151
Prostate 32,203	Breast 41,736	Brain & ONS 230	Brain & ONS 195	Brain & ONS 420	Leukemia 383	Colon & Rectum 2,840	Lung & Bronchus 5,791	Colon & Rectum 12,778	Breast 16,845	Prostate 22,123	Colon & Rectum 16,678
Colon & Rectum 28,023	Colon & Rectum 28,950	Endocrine 99	Endocrine 61	NHL 392	Cervix 283	NHL 1,851	Colon & Rectum 2,275	Prostate 9,665	Colon & Rectum 9,838	Colon & Rectum 12,215	Breast 15,031
Pancreas 13,806	Pancreas 14,529	Bone & Joints 49	Soft Tissue 37	Colon & Rectum 189	Brain & ONS 253	Brain & ONS 1,738	Ovary 1,914	Pancreas 6,892	Ovary 6,036	Pancreas 5,249	Pancreas 7,746
NHL 12,205	Ovary 13,390	Soft Tissue 47	Kidney & Renal Pelvis 36	Melanoma 169	NHL 193	Pancreas 1,626	Cervix 1,763	NHL 5,182	Pancreas 5,675	NHL 4,736	NHL 5,950

Source: National Center for Health Statistics (NCHS) Public-use file for 1998 deaths.
NHL = Non Hodgkin's Lymphoma

Relationship of Cancer to the Leading Causes of Death in the United States

Rank	Cause	Number of Deaths	Age Adjusted Rate*	Percent of Total Deaths
	All Causes	2,336,845	645.5	100.0%
1	Heart Disease	724,803	189.0	31.0%
2	CANCER	541,519	161.5	23.2%
3	Cerebrovascular Diseases	158,439	39.4	6.8%
4	Emphysema, Bronchitis & Asthma	112,577	30.9	4.8%
5	Accidents	97,725	31.5	4.2%
6	Pneumonia & Influenza	91,866	21.8	3.9%
7	Diabetes Mellitus	64,751	18.5	2.8%
8	Suicide and Self-Inflicted Injury	30,558	10.0	1.3%
9	Nephritis & Nephrosis	26,182	6.7	1.1%
10	Cirrhosis of the Liver	25,187	8.1	1.1%
11	Septicemia	23,729	6.3	1.0%
12	Alzheimers	22,724	5.0	1.0%
13	Homicide	18,216	6.6	0.8%
14	Aortic Aneurysm	16,237	4.5	0.7%
15	Atherosclerosis	15,279	3.5	0.7%
	Other and Ill-Defined	367,053	102.0	15.7%

Source: NCHS Public-use file for 1998 deaths.

* Age adjusted rate per 100,000 Population

Estimated New Cancer Cases and Deaths by Sex for All Races 2001

Primary Site	Estimated New Cases			Estimated Deaths		
	Total	Male	Female	Total	Male	Female
All Sites *	1,268,000	643,000	625,000	553,400	286,100	267,300
Oral Cavity and Pharynx	30,100	20,200	9,900	7,800	5,100	2,700
Tongue	7,100	4,800	2,300	1,700	1,100	600
Mouth	10,500	6,000	4,500	2,300	1,300	1,000
Pharynx	8,400	6,300	2,100	2,100	1,500	600
Other Oral Cavity	4,100	3,100	1,000	1,700	1,200	500
Digestive System	235,700	124,000	111,700	131,300	70,100	61,200
Esophagus	13,200	9,900	3,300	12,500	9,500	3,000
Stomach	21,700	13,400	8,300	12,800	7,400	5,400
Small Intestine	5,300	2,600	2,700	1,100	600	500
Colon	98,200	46,200	52,000	48,100	23,000	25,100
Rectum	37,200	21,100	16,100	8,600	4,700	3,900
Anus, Anal Canal, & Anorectum	3,500	1,500	2,000	500	200	300
Liver and Intrahepatic Bile Duct	16,200	10,700	5,500	14,100	8,900	5,200
Gallbladder & Other Biliary	6,900	3,200	3,700	3,300	1,200	2,100
Pancreas	29,200	14,200	15,000	28,900	14,100	14,800
Other Digestive	4,300	1,200	3,100	1,400	500	900
Respiratory System	184,600	102,400	82,200	162,500	93,900	68,600
Larynx	10,000	8,000	2,000	4,000	3,100	900
Lung and Bronchus	169,500	90,700	78,800	157,400	90,100	67,300
Other Respiratory	5,100	3,700	1,400	1,100	700	400
Bones and Joints	2,900	1,600	1,300	1,400	800	600
Soft Tissues	8,700	4,600	4,100	4,400	2,100	2,300
Skin (excl. basal & squamous)	56,400	31,700	24,700	9,800	6,300	3,500
Melanomas Of Skin	51,400	29,000	22,400	7,800	5,000	2,800
Other non-epithelial skin	5,000	2,700	2,300	2,000	1,300	700
Breast	193,700	1,500	192,200	40,600	400	40,200
Genital Organs	286,800	206,500	80,300	58,500	32,200	26,300
Cervix Uteri	12,900		12,900	4,400		4,400
Endometrium (uterus)	38,300		38,300	6,600		6,600
Ovary	23,400		23,400	13,900		13,900
Vulva	3,600		3,600	800		800
Vagina and other genital organs, female	2,100		2,100	600		600
Prostate	198,100	198,100		31,500	31,500	
Testis	7,200	7,200		400	400	
Penis and other genital organs, male	1,200	1,200		300	300	
Urinary System	87,500	59,400	28,100	25,000	16,100	8,900
Urinary Bladder	54,300	39,200	15,100	12,400	8,300	4,100
Kidney and Renal Pelvis	30,800	18,700	12,100	12,100	7,500	4,600
Ureter and other urinary organs	2,400	1,500	900	500	300	200
Eye and Orbit	2,100	1,100	1,000	200	100	100
Brain and Other Nervous System	17,200	9,800	7,400	13,100	7,200	5,900
Endocrine Glands	21,400	5,600	15,800	2,300	1,000	1,300
Thyroid	19,500	4,600	14,900	1,300	500	800
Other Endocrine	1,900	1,000	900	1,000	500	500
Lymphomas and Myelomas	63,600	35,000	28,600	27,600	14,500	13,100
Hodgkin's Disease	7,400	3,900	3,500	1,300	700	600
Non-Hodgkin's Lymphoma	56,200	31,100	25,100	26,300	13,800	12,500
Multiple Myeloma	14,400	7,500	6,900	11,200	5,800	5,400
Leukemias	31,500	17,700	13,800	21,500	12,000	9,500
Lymphocytic Leukemias	11,600	6,700	4,900	6,000	3,500	2,500
Myeloid Leukemias	14,700	8,000	6,700	9,500	5,200	4,300
Other Leukemias	5,200	3,000	2,200	6,000	3,300	2,700
All Other Sites	31,400	14,400	17,000	36,200	18,500	17,700

Source: Cancer Facts & Figures-2001, American Cancer Society (ACS), Atlanta, Georgia 2001.
Excludes basal and squamous cell skin and in situ carcinomas except urinary bladder.
Incidence projections are based on rates from the NCI SEER Program 1979-1997.

The Cost of Cancer

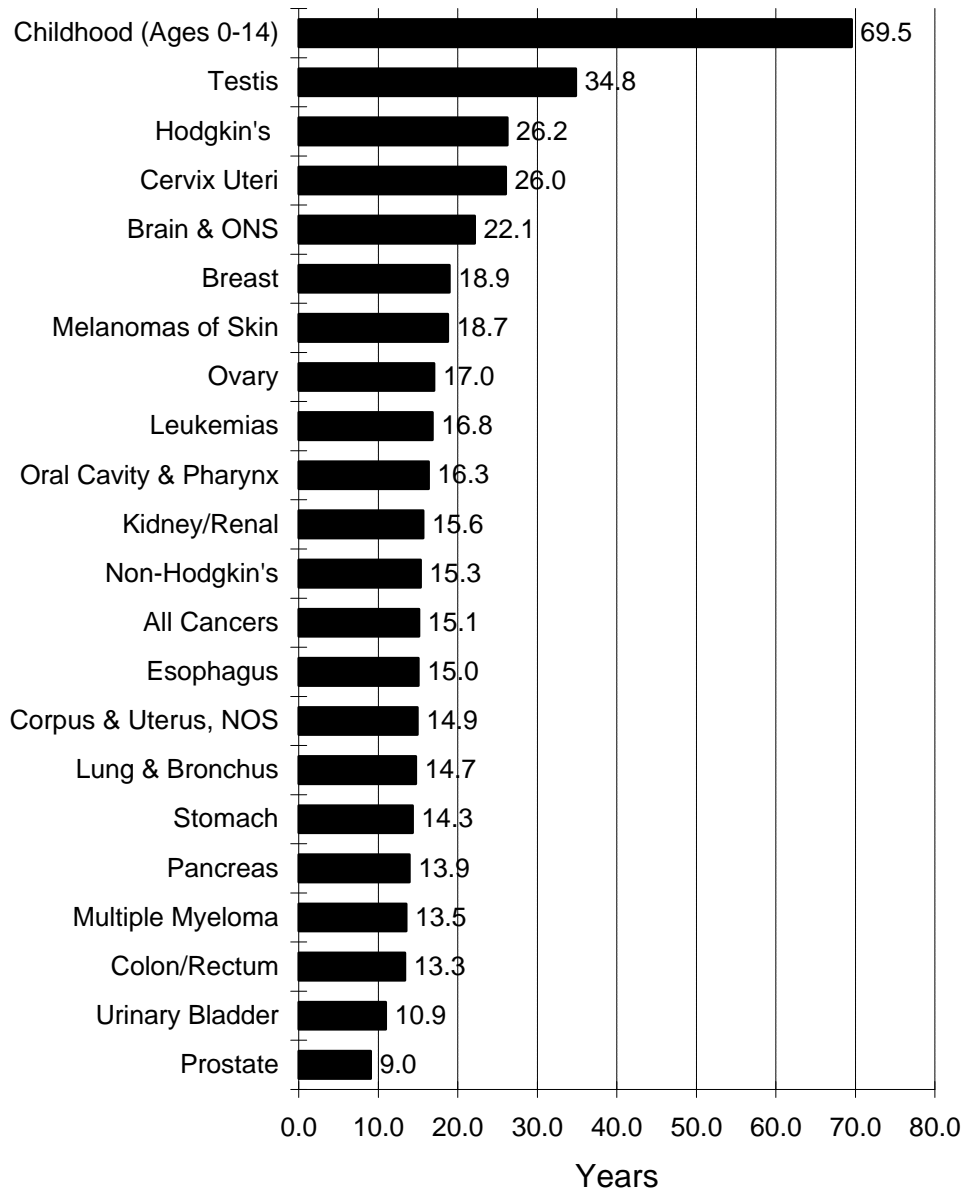
Cancer treatment spending has risen but remains stable in proportion to total U.S. treatment spending.

The financial costs of cancer treatment are a burden to people diagnosed with cancer, their families, and society as a whole. Cancer treatment accounted for about \$41 billion in 1995, the most recent year for which there is information. This is just under 5 percent of total U.S. spending for medical treatment. In the 10 years from 1985 to 1995, the overall costs of treating cancer more than doubled.

Year	Amount (in \$ millions)	Percent of All Health Care Expenditures
1963	\$1,279	4.35%
1972	3,872	4.96
1980	13,049	6.01
1985	18,104	4.81
1990	27,458	4.46
1995	41,200	4.69

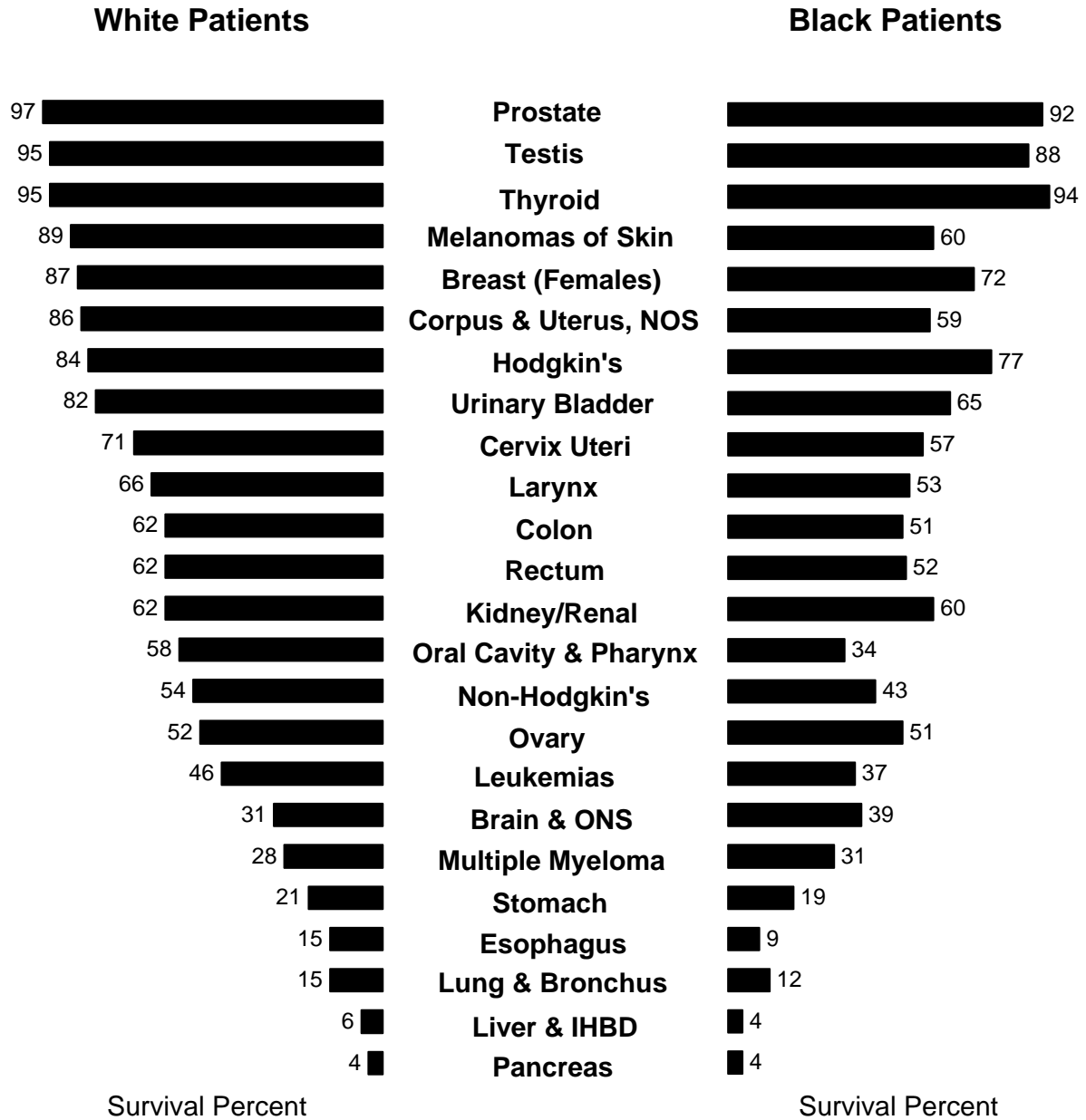
Source: Brown, ML, Lipscomb J, Snyder C. The burden of illness cancer: economic cost and quality of life. Annual Review of Public Health 2001;22:91-113.

**Average Years of Life Lost
Per Person Dying of Cancer
All Races, Both Sexes, 1998**



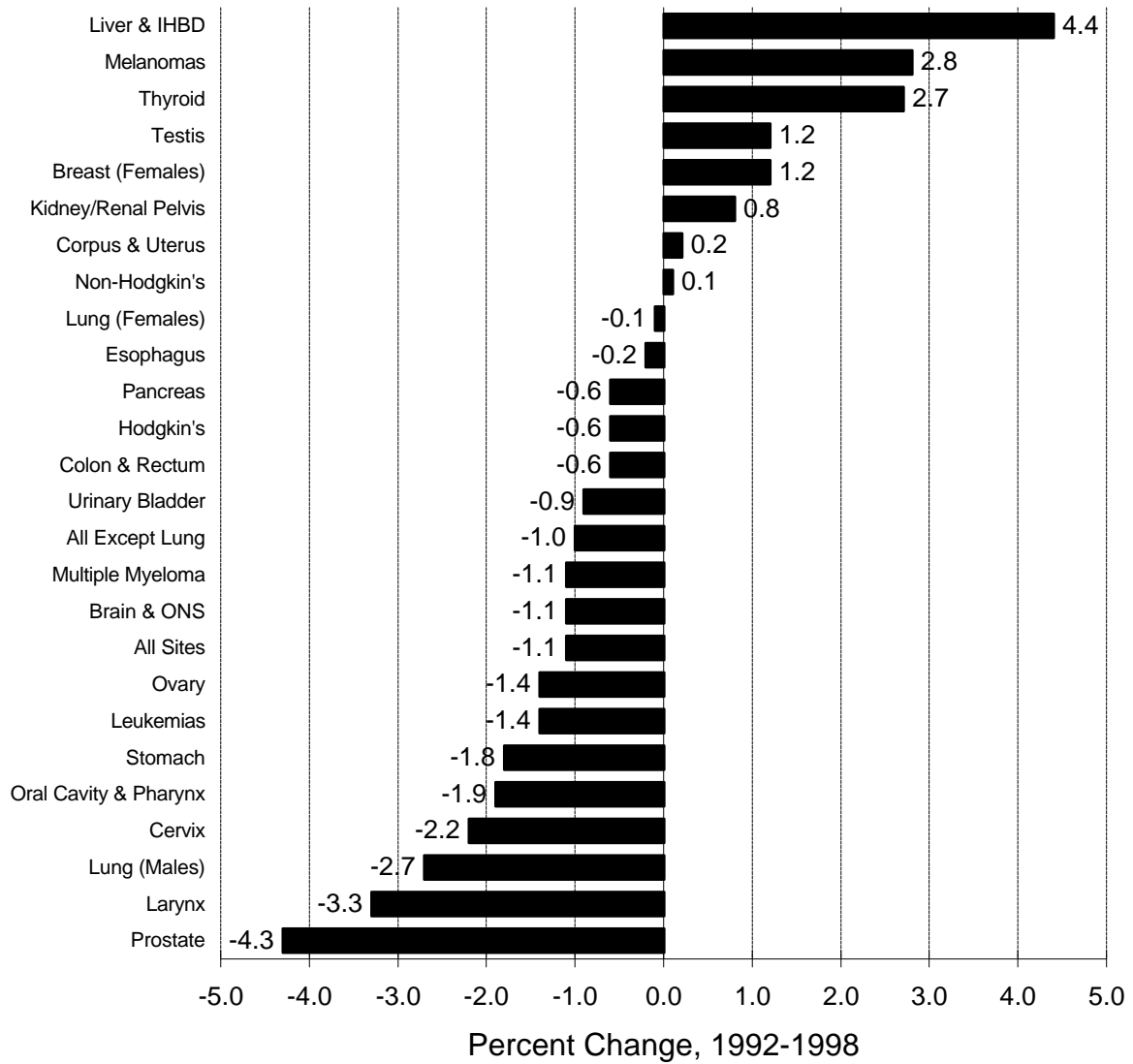
Source: NCHS public-use data and 1997 life tables.

5 Year Relative Survival Rates by Site
SEER Program 1992-1997
Males and Females



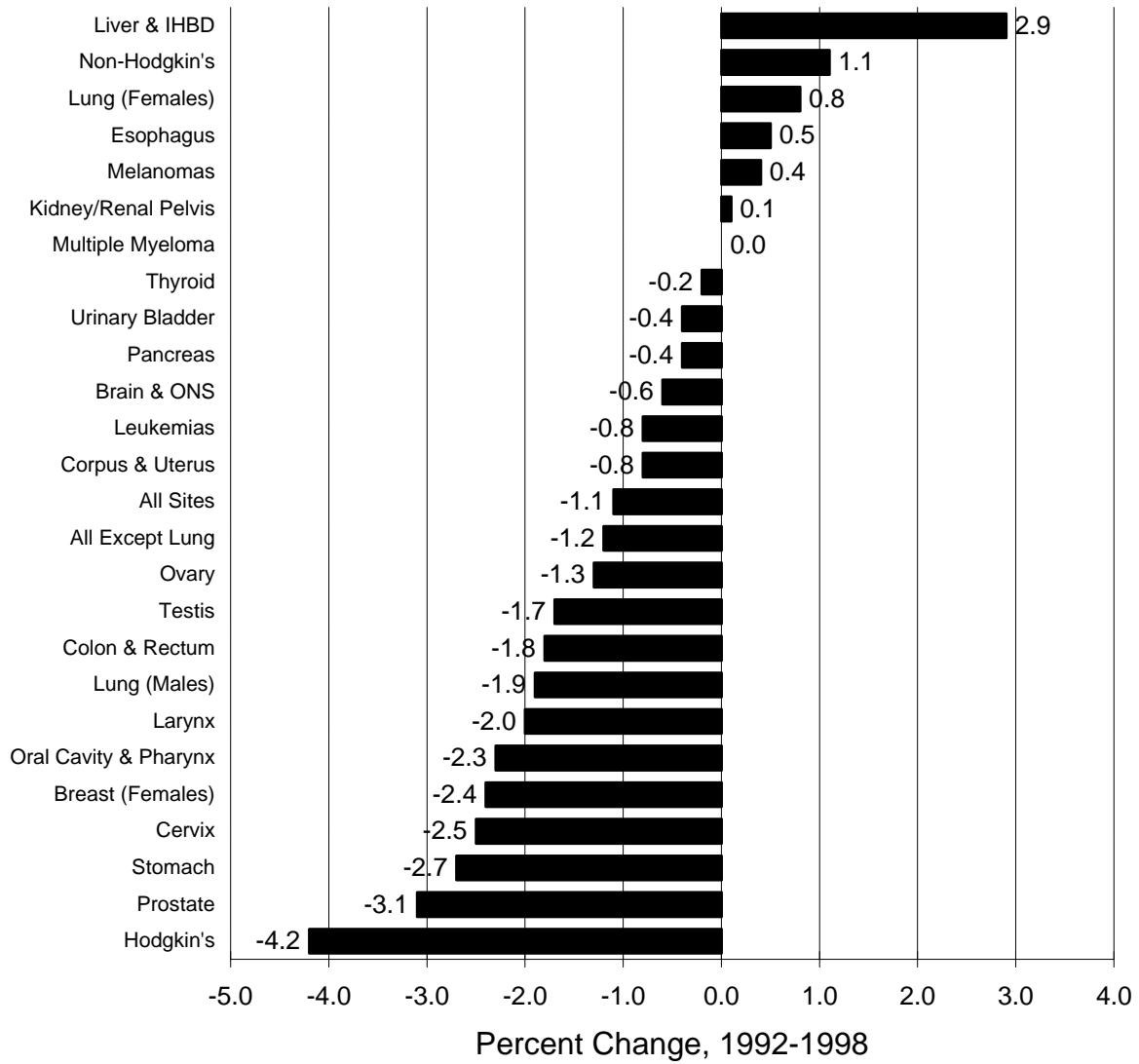
Data From NCI SEER Program
<http://www.seer.cancer.gov/>

Cancer Incidence Rates Changes from 1992 to 1998



Cancer Mortality Rates

Changes from 1992 to 1998



Cancer Incidence Rates By Race

SEER, 1992-1998

Cancer Site	Incidence Rates per 100,000				
	Blacks	Whites	Hispanics	Asian/ Pacific Islander	American Indian/ Alaska Native
All Sites	445.3	401.4	270.0	283.4	202.7
Males	596.8	470.4	319.7	327.7	227.7
Females	337.6	354.4	237.7	252.1	186.3
Oral Cavity and Pharynx	12.1	9.7	5.6	7.8	6.6
Esophagus	7.4	3.5	2.3	2.5	2.6
Stomach	11.2	6.3	9.9	14.5	8.1
Colon and Rectum	50.1	42.9	28.4	38.2	28.6
Colon excluding Rectum	38.3	30.7	19.2	25.6	20.2
Rectum and Rectosigmoid Junction	11.9	12.2	9.2	12.6	8.4
Liver and IHBD	5.1	3.4	6.1	11.5	5.6
Pancreas	13.2	8.5	6.9	7.3	5.6
Larynx	6.3	3.7	2.3	1.6	^
Lung and Bronchus	71.6	54.7	26.0	35.5	31.0
Males	107.2	69.6	36.0	51.9	44.3
Females	45.7	43.6	18.7	22.7	20.6
Melanoma of the Skin	0.9	14.8	2.9	1.1	1.3
Breast(females)	101.5	115.5	68.5	78.1	50.5
<50 years	32.3	31.6	22.1	27.7	16.3
50+ years	314.7	374.0	211.9	233.6	156.2
Cervix Uteri	11.0	8.1	14.4	10.3	6.4
Corpus and Uterus, NOS	15.3	22.5	13.2	14.6	8.8
Ovary	10.3	15.4	11.4	10.8	9.1
Prostate	234.2	144.6	103.4	82.8	47.8
Testis	1.0	5.2	3.1	1.8	2.2
Urinary Bladder	9.6	17.7	7.6	7.6	2.8
Kidney and Renal Pelvis	10.5	9.3	7.9	5.2	9.8
Brain and Other nervous system	3.8	6.4	4.2	3.4	2.0
Thyroid	3.0	5.4	4.8	6.7	3.1
Hodgkin's disease	2.2	2.8	2.1	0.9	^
Non-Hodgkin's lymphoma	12.0	16.4	12.2	11.0	5.4
All Sites Except Lung and Bronchus	373.7	346.7	244.0	247.9	171.7
Males	489.6	400.8	283.7	275.8	183.4
Females	291.9	310.8	219.0	229.4	165.7

Data source: NCI SEER Program.

NCI's SEER Program, adjusted to the 1970 US population age distribution.

^ Statistic not shown. Rate based on less than 25 cases for the time interval.

Cancer Mortality Rates By Race United States, 1992-1998

Cancer Site	Mortality Rates per 100,000				
	Blacks	Whites	Hispanics	Asian/ Pacific Islander	American Indian/ Alaska Native
All Sites	218.2	164.5	102.6	101.2	105.4
Males	297.7	203.2	128.8	125.6	125.3
Females	166.6	138.0	84.3	82.4	90.8
Oral Cavity and Pharynx	4.5	2.4	1.6	2.2	1.9
Esophagus	7.1	3.3	2.0	1.8	2.1
Stomach	7.9	3.6	5.6	8.0	4.3
Colon and Rectum	22.8	16.8	10.2	10.7	10.3
Liver and IHBD	4.9	3.2	5.1	9.0	4.1
Pancreas	11.8	8.1	6.0	5.8	4.6
Larynx	2.7	1.2	0.9	0.4	0.9
Lung and Bronchus	59.1	48.8	19.3	23.3	30.1
Males	96.2	67.8	30.5	33.8	41.8
Females	33.6	34.6	10.9	15.1	20.9
Melanoma of the Skin	0.4	2.5	0.6	0.3	0.5
Breast(females)	31.0	24.3	14.8	11.0	12.4
<50 years	8.5	4.9	3.7	3.1	2.9
50+ years	100.3	84.2	48.9	35.5	41.6
Cervix Uteri	5.7	2.4	3.3	2.7	2.9
Corpus and Uterus, NOS	5.7	3.1	2.5	1.8	2.0
Ovary	6.3	7.8	4.7	4.0	4.2
Prostate	53.1	22.4	15.9	9.8	14.0
Testis	0.1	0.3	0.2	0.1	^
Urinary Bladder	3.0	3.3	1.6	1.3	1.1
Kidney and Renal Pelvis	3.5	3.6	2.7	1.5	3.8
Brain and Other nervous system	2.5	4.4	2.4	1.7	1.7
Thyroid	0.3	0.3	0.4	0.5	^
Hodgkin's disease	0.5	0.5	0.5	0.2	0.2
Non-Hodgkin's lymphoma	4.8	7.1	5.0	4.1	3.2
All Sites Except Lung and Bronchus	159.1	115.7	83.3	77.9	75.3
Males	201.5	135.5	98.4	91.8	83.5
Females	133.0	103.4	73.3	67.4	69.9

Data source: NCHS public-use data files.

^ Statistic not shown. Rate based on less than 25 cases for the time interval.

Fiscal Year 2001 Budget

(Dollars in Thousands)

A. Actual Obligations Resulting From Appropriated Funds:

FY 2001 Appropriation	\$3,757,242
Real transfer to other HHS Agencies through Secretary's one percent transfer authority	-711
Enacted Rescission	-2,005
Real transfer to HHS for the office of Human Research Protection	-781
Lapse	-24
Actual Obligations Subtotal	3,753,721

B. Reimbursable Obligations:

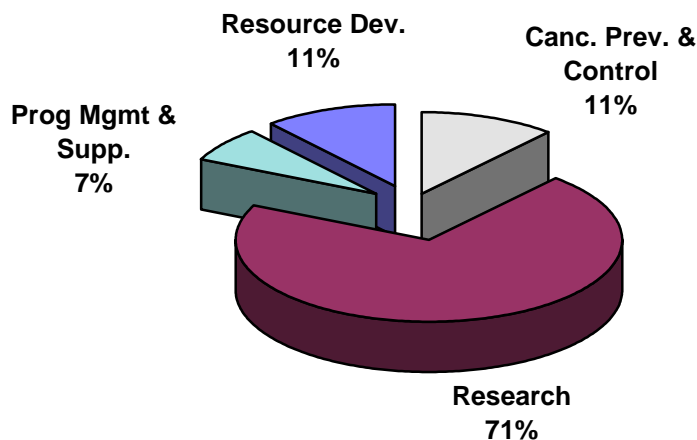
AIDS Reimbursement from Office of the Director, NIH	1,677
Other Reimbursements	9,295
Reimbursements	10,972

C. Total NCI Obligations: **\$3,764,693 ***

*EXCLUDES Insight Awards to Stamp Out Breast Cancer(PAR-99-128). In FY 2001, there were 43 R21 awards for \$4,846.

Program Structure Fiscal Year 2001

(Dollars in Thousands)

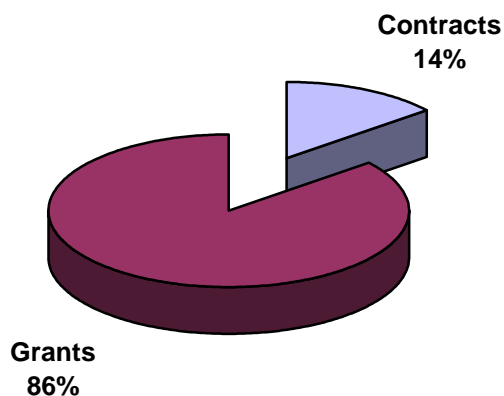


Budget Activity	Amount	Percent
Research:		
Cancer Causation	\$880,612	23.5%
Detection and Diagnosis Research	260,542	6.9%
Treatment Research	916,312	24.4%
Cancer Biology	597,800	15.9%
Subtotal Research	2,655,266	70.7%
Resource Development:		
Cancer Centers Support	280,680	7.5%
Research Manpower Development	131,469	3.5%
Construction	3,000	0.1%
Subtotal Resource Development	415,149	11.1%
Cancer Prevention and Control	426,572	11.4%
Program Management and Support	256,734	6.8%
*Total NCI	3,753,721	100.0%

*EXCLUDES Insight Awards to Stamp Out Breast Cancer(PAR-99-128). In FY 2001, there were 43 R21 awards for \$4,846.

Extramural Funds Fiscal Year 2001

(Dollars in Thousands)



Mechanism	Amount	Percent
Contracts:		
R& D Contracts	\$243,268	8.4%
Interagency Agreements	40,703	1.4%
Cancer Control Contracts	126,117	4.3%
Construction Contracts	1,500	0.1%
Subtotal Contracts	411,588	14.2%
Grants:		
Research Project Grants	1,696,603	58.5%
Cancer Centers/SPORES	279,731	9.6%
Training Activities	57,927	2.0%
Other Research Grants	269,201	9.3%
Cancer Control Grants	183,665	6.3%
Construction Grants	1,500	0.1%
Subtotal Grants	2,488,627	85.8%
Total Extramural Funds	2,900,215	101.4%
Total Intramural/RMS/Control Inhouse	853,506	
*Total NCI	\$3,753,721	

*EXCLUDES Insight Awards to Stamp Out Breast Cancer(PAR-99-128). In FY 2001, there were 43 R21 awards for \$4,846.

NCI Obligations by Mechanism, Fiscal Year 2001

(Dollars in Thousands)

		Number	Amount	% of Total
Research Project Grants	Non-Competing	3,191	\$1,166,705	31.1%
	Administrative Supplements	(392)	36,831	1.0%
	Competing	1,176	417,234	11.1%
	Subtotal, without SBIR/STTR Grants	4,367	1,620,770	43.2%
	SBIR/STTR Grants-R41-44	328	75,833	2.0%
	Subtotal, Research Project Grants	4,695	1,696,603	45.2%
Centers & Spores	Cancer Centers Grants-P30	60	192,116	5.1%
	SPOREs-P20/P50	31	76,844	2.0%
	U54s	2	10,771	
	Subtotal, Centers	93	279,731	7.5%
Other Research	Career Program			
	Temin & Minority Mentored Awards-K01	76	10,398	0.3%
	RCDA-K04	0	0	0.0%
	Estab. Inv. Award-K05	5	550	0.0%
	Preventive Oncology-K07	57	6,309	0.2%
	Clinical Investigator-K08	123	14,500	0.4%
	Physician Investigator-K11	0	0	0.0%
	Clinical Oncology-K12	21	8,409	0.2%
	Transitional Career Development-K22	8	1,191	0.0%
	Mentored Patient Oriented RCDA-K23	33	4,291	0.1%
	Mid-Career Invest. & Patient Orient. Res-K24	34	3,796	0.1%
	Mentored Quant. Res Career-K25	1	133	0.0%
	Inst. Curr. Award-K30		1,600	0.0%
	Subtotal, Career Program	358	51,177	1.4%
	Cancer Education Program-R25	91	21,740	0.6%
	Clinical Cooperative Groups-U10	138	154,261	4.1%
	Minority Biomedical Support-S06		3,479	0.1%
	Scientific Evaluation-U09/T09	1	5,850	0.2%
	Continuing Education	2	202	0.0%
	Resource Grants-R24/U24	53	29,339	0.8%
	Explor Coop Agreement-U56	4	1,042	0.0%
Conference Grants-R13	87	2,111	0.1%	
Subtotal, Other Research Grants	734	269,201	7.2%	
Subtotal, Research Grants		5,522	2,245,535	59.8%
NRSA Fellowships	<i>Trainees:</i>	1,592	57,927	1.5%
R&D Contracts	R&D Contracts	126	281,874	7.5%
	SBIR Contracts	5	2,097	0.1%
	Subtotal, Contracts	131	283,971	7.6%
Intramural Research:	Program	1,884	463,380	12.3%
	NIH Management Fund		103,917	2.8%
	Subtotal, Intramural Research	<i>FTEs:</i> 1,884	567,297	15.1%
RMS	Research Mgmt and Support	771	123,064	3.3%
	NIH Management Fund		13,445	0.4%
	Subtotal, RMS	<i>FTEs:</i> 771	136,509	3.6%
Cancer Prevention and Control:	Cancer Control Grants	213	183,665	4.9%
	Cancer Control Contracts	186	126,117	3.4%
	Inhouse	324	135,752	3.6%
	NIH Management Fund		13,948	0.4%
	Subtotal, Prevention and Control	<i>FTEs:</i> 324	459,482	12.2%
Construction			3,000	0.1%
*Total NCI	<i>FTEs:</i>	2,979	3,753,721	100.0%

*EXCLUDES Insight Awards to Stamp Out Breast Cancer(PAR-99-128). In FY 2001, there were 43 R21 awards for \$4,846.

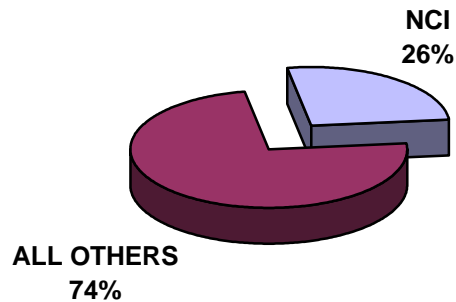
Division Obligations by Mechanisms, Fiscal Year 2001

(Dollars in Thousands)

DBS	DCS	DCEG	DCTD	DCB	DCCPS	DCP	DEA	OD	Research Grants	Program Support
									\$1,148,844	\$17,861
									36,831	
									417,234	
									1,602,909	17,861
									75,833	
									1,678,742	17,861
								\$192,116		
								76,844		
			\$3,111	\$1,000				6,660		
								275,620	0	0
								10,398		
								0		
								550		
								6,309		
								14,500		
								0		
								8,409		
								1,191		
								4,291		
								3,796		
								133		
								1,600		
								51,177	0	
								21,740		
									154,261	
									3,479	
									5,850	
									202	
									29,339	
									1,042	
									2,111	
			0	0	0	0	0	0	72,917	196,284
								348,537	1,875,026	17,861
								57,927		
			7,193	90,842	4,120	19,913		117,227		42,579
				1,348		749				
		7,193	92,190	4,120	20,662			117,227		42,579
\$206,890	\$126,491	54,794	544					61,863		12,798
										103,917
206,890	126,491	54,794	544					61,863		116,715
			26,290	9,663			13,813	56,909		16,389
										13,445
			26,290	9,663			13,813	56,909		29,834
			12,567		52,718	105,470		12,910		
		4,542	2,817		32,895	62,060		23,803		
	5,018	10,481	5,021		22,724	16,074	124	72,180		4,130
										13,948
	5,018	15,023	20,405		108,337	183,604	124	108,893		18,078
								3,000		
206,890	131,509	77,010	139,429	13,783	128,999	183,604	13,937	754,356	1,875,026	225,067

NIH Management Fund, Service & Supply Fund, and GSA Rent Fiscal Year 2001

(Dollars in Thousands)



DISTRIBUTION OF NCI PAYMENT	Amount	Share of NCI
Clinical Center	\$80,509	50.4%
Center for Scientific Review	6,051	3.8%
Center for Information Technology	7,722	4.8%
GSA Rental Payments for Space	26,466	16.6%
Service & Supply Fund	13,759	8.6%
Other Research Services	11,848	7.4%
Other OD	13,285	8.3%
Total Management Fund, SSF & Rent	159,640	100.0%
Other NIH Institutes Management Fund	688,316	
Total NIH Management Fund	\$847,956	

The Management Fund provides for the financing of certain common research and administrative support activities which are required in the operations of NIH:

Clinical Center: Admissions and followup, anesthesiology, diagnostic x-ray, nuclear medicine, clinical pathology, blood bank, rehabilitation medicine, pharmacy, medical records, nursing services, patient nutrition service, housekeeping services, laundry, and social work

Center for Scientific Review: Initial scientific review of applications, assignment of research grant applications to institutes

Center for Information Technology: Research and development program in which concepts and methods of computer science are applied to biomedical problems

GSA Rental Payments for Space: Building rental including utilities and guard services.

Note: This does not include all of NCI's lease payments, only those paid through the NIH Management Fund.

Other Research Services: Procurement, safety, engineering, biomedical engineering, veterinary resources, and library

Service & Supply Fund: NIH Assessments paid out of the Management Fund in previous years. It is currently being paid out of the NIH SSF.

Special Sources of Funds

CRADAs

As a result of the Federal Technology Transfer Act of 1986 (PL 99-502), government laboratories are authorized to enter into Cooperative Research and Development Agreements (CRADAs) with private sector entities. Licensing agreements are usually incorporated into the CRADA document which addresses patent rights attributable to research supported under the CRADA.

CRADA Receipts Deposited to the U.S. Treasury
(Dollars in Thousands)

Fiscal Year	Carryover from Prior Year	Collections	Obligations
1993	1,262	2,509	1,582
1994	2,189	2,248	1,917
1995	2,570	2,653	1,478
1996	3,745	2,229	1,394
1997	4,580	13,434	6,631
1998	11,383	5,351	7,266
1999	9,468	3,646	4,707
2000	8,240	2,743	4,616
2001	6,367	5,295	2,767

Royalty Income

NCI retains a portion of the royalty income generated by the patents related to NCI-funded research. A major portion of this royalty income is used to reward employees of the laboratory, further scientific exchange and for education and training in accordance with the terms of the Federal Technology Transfer Act (PL 99-502). Receipts are also used to support costs associated with processing and collecting royalty income and for technology transfer efforts in NCI and NIH.

Royalty Income Funding History
(Dollars in Thousands)

Years	Collections*	Inventor Payments	Other
1992/1993	2,105	451	1,654
1993/1994	5,700	983	4,717
1994/1995	11,244	1,235	10,009
1995/1996	9,031	953	8,078
1996/1997	13,598	2,175	11,423
1997/1998	9,814	2,321	7,493
1998/1999	22,716	5,084	17,632
1999/2000	21,160	4,695	16,465
2000/2001	37,040	4,811	32,229
2001/2003	27,443	5,659	21,784

* Does not include assessments by NIH.

Breast Cancer Emergency Supplement – Flood Money

The Emergency Supplement Appropriations Act (PL 105-18) of June 1997, appropriated \$15,000,000 to the Department of Health and Human Services to support high priority health research in the area of environmental influences on breast cancer. \$12,000,000 of the funds were transferred to NCI to support breast cancer research. In FY 1999, NCI obligated \$9,748,403, in FY 2000, NCI obligated \$215,400 and in FY 2001 NCI obligated \$2,027,729. NCI will obligate the remaining \$8,468 in FY 2002.

Stamp Out Breast Cancer

The Stamp Out Breast Cancer Act (PL 105-41) was established in August 1997 and extended in July 2000 (PL 106-253). This act allows postal customers to contribute to funding for breast cancer research through their voluntary purchases of special rate postage stamps from U.S. Postal Service. The Act required the USPS to transfer 70% to NIH and 30% to the DOD of the funds collected above the postage costs and administrative costs. As of January 2002, NCI has received \$14,523,920. NCI has used these funds to fund research projects directed towards breast cancer, specifically, those grants in response to the NCI RFA for "Insight Awards to Stamp Out Breast Cancer." In FY 2000, 34 R21 grants were awarded. The second year of these insight awards were funded in FY 2001. In addition, 12 new R21 grants were awarded. The second year of these insight awards will be paid in FY 2002.

Research Funding for Various Research Areas

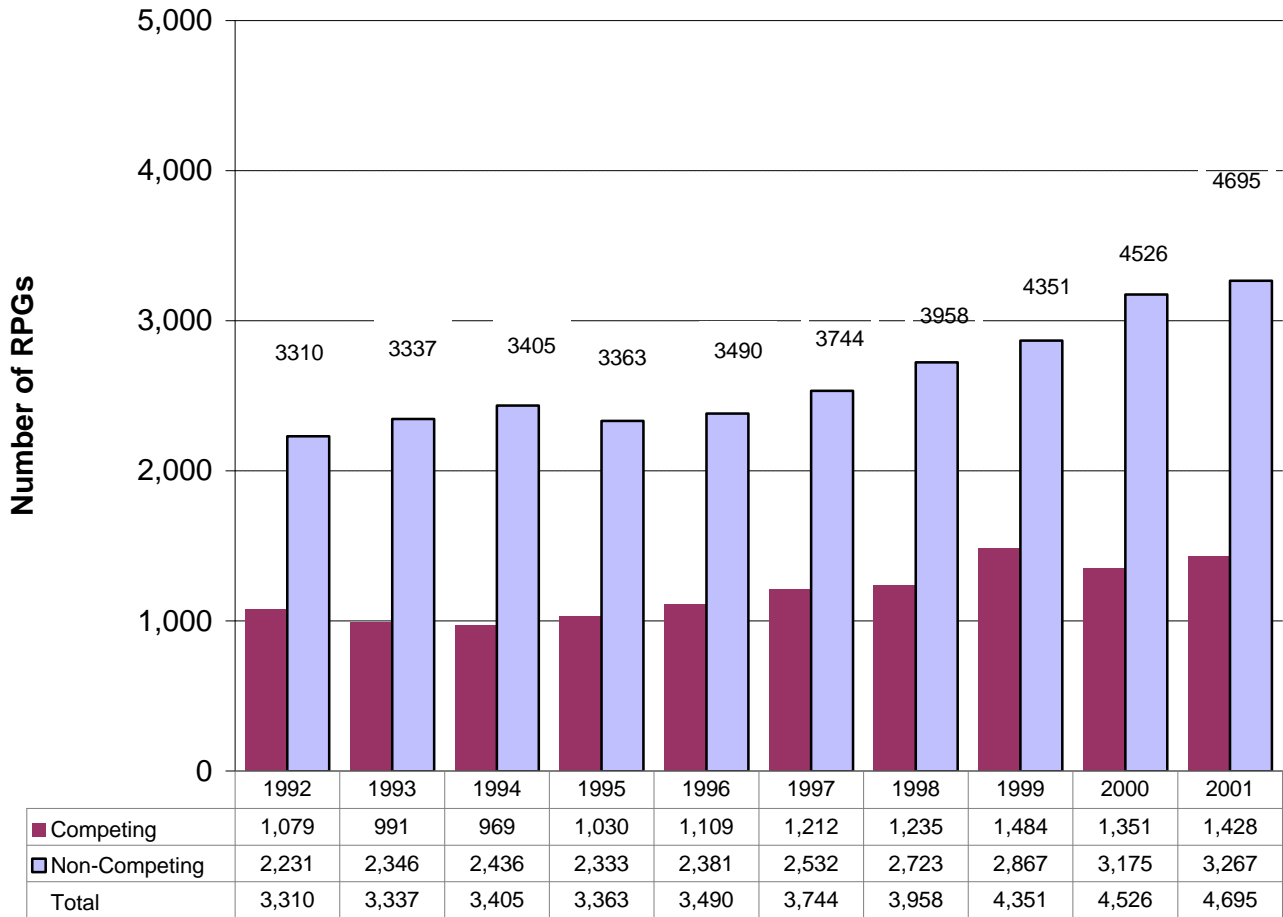
(Dollars in Millions)

The National Cancer Institute reports how appropriated funds are spent in a number of different categories or classifications including specific cancer sites, cancer types, diseases related to cancer, as well as types of research mechanisms. The table below represents funding levels for frequently requested research areas. These research areas do not represent the entire NCI research portfolio. Funding for these areas can overlap and do not add to the total NCI budget. For example, dollars for a clinical trial on breast cancer research would be included in both the Breast Cancer and the Clinical Trials lines in the table below. Similarly, a basic cancer research project may be relevant to cervical, uterine and ovarian cancers and relevant funding would be included in the figures for all three sites.

Disease Area	1997 Actual	1998 Actual	1999 Actual	2000 Actual	2001 Actual
Total NCI Budget	\$2,389.1	\$2,551.3	\$2,891.0	\$3,311.1	\$3,753.7
AIDS	224.7	225.9	239.2	244.1	239.1
Brain & CNS	46.1	54.3	63.5	71.9	80.7
Breast Cancer	332.0	348.7	387.2	438.7	475.2
Cervical Cancer	55.8	58.0	66.3	67.0	72.6
Colorectal Cancer	103.2	121.0	152.9	175.8	207.4
Head and Neck Cancers	38.5	41.9	45.9	47.0	50.0
Hodgkins Disease	8.1	8.3	8.2	9.4	10.2
Leukemia	91.2	103.4	122.2	141.7	154.0
Liver Cancer	35.3	38.1	39.8	46.2	54.5
Lung Cancer	132.4	139.8	151.0	175.0	206.5
Melanoma	43.3	50.3	60.1	67.9	71.8
Multiple Myeloma				18.0	19.7
Non Hodgkin's Lymphoma	52.7	57.1	66.2	70.4	79.5
Ovarian Cancer	41.7	40.8	56.5	65.5	76.9
Pancreatic Cancer	10.2	14.2	17.3	20.0	21.8
Prostate Cancer	82.3	86.9	135.7	203.2	258.0
Stomach Cancer	9.3	8.2	7.6	8.2	9.0
Uterine Cancer	8.1	12.2	13.8	16.0	18.8

Research Project Grants Number of Awards Fiscal Years 1992-2001

Includes Small Business Innovation Research Awards



RPGs Requested and Awarded Fiscal Years 1992-2001

(Dollars in Thousands)

Fiscal Year	Type	Requested		Awarded		Success Rate	
		No.	Amt.	No.	Amt.		
1992	Competing	New	2,508	\$612,369	664	\$119,091	32.2%
		Renewal	815	332,428	398	133,413	
		Supplement	23	3,704	17	1,347	
		Subtotal	3,346	948,501	1,079	253,851	
	Non-Competing				2,231	620,006	
	Total			3,310	873,857		
1993	Competing	New	3,173	\$746,912	644	\$114,227	23.9%
		Renewal	891	328,657	340	107,949	
		Supplement	75	8,554	7	1,698	
		Subtotal	4,139	1,084,123	991	223,874	
	Non-Competing				2,346	692,436	
	Total			3,337	916,310		
1994	Competing	New	3,643	\$787,824	657	\$118,403	21.1%
		Renewal	935	342,068	308	110,723	
		Supplement	20	3,311	4	733	
		Subtotal	4,598	1,133,203	969	229,859	
	Non-Competing				2,436	704,665	
	Total			3,405	934,524		
1995	Competing	New	3,345	\$789,560	645	\$119,760	23.3%
		Renewal	1,048	403,577	375	127,065	
		Supplement	21	7,502	10	1,537	
		Subtotal	4,414	1,200,639	1,030	248,362	
	Non-Competing				2,333	704,374	
	Total			3,363	952,736		
1996	Competing	New	3,071	\$733,313	682	142,249	27.5%
		Renewal	947	367,270	422	139,995	
		Supplement	10	1,921	5	694	
		Subtotal	4,028	1,102,504	1,109	282,938	
	Non-Competing				2,381	751,592	
	Total			3,490	1,034,530		
1997	Competing	New	3,328	\$828,653	815	160,763	29.2%
		Renewal	815	354,054	392	146,912	
		Supplement	14	3,136	5	755	
		Subtotal	4,157	1,185,843	1,212	308,430	
	Non-Competing				2,532	814,885	
	Total			3,744	1,123,315		
1998	Competing	New	3,054	\$797,477	847	189,746	32.8%
		Renewal	697	283,562	382	137,764	
		Supplement	18	4,299	6	1,421	
		Subtotal	3,769	1,085,338	1,235	328,931	
	Non-Competing				2,723	901,845	
	Total			3,958	1,230,776		
1999	Competing	New	3,905	\$1,091,110	1,088	237,187	31.8%
		Renewal	757	340,075	390	145,623	
		Supplement	12	3,882	6	2,353	
		Subtotal	4,674	1,435,067	1,484	385,163	
	Non-Competing				2,867	976,610	
	Total			4,351	1,361,773		
2000	Competing	New	4,116	\$1,253,002	957	251,628	27.2%
		Renewal	839	435,207	392	175,908	
		Supplement	11	2,379	2	231	
		Subtotal	4,966	1,690,588	1,351	427,767	
	Non-Competing				3,175	1,100,234	
	Total			4,526	1,528,001		
2001	Competing	New	4,342	\$1,374,538	1,050	290,707	27.3%
		Renewal	856	437,455	372	173,722	
		Supplement	29	11,108	6	1,214	
		Subtotal	5,227	1,823,101	1,428	465,643	
	Non-Competing				3,267	1,213,098	
	Total			4,695	1,678,741		

Includes Small Business Innovation Awards.

Success rate is the number of awarded grants divided by the number of awards requested.

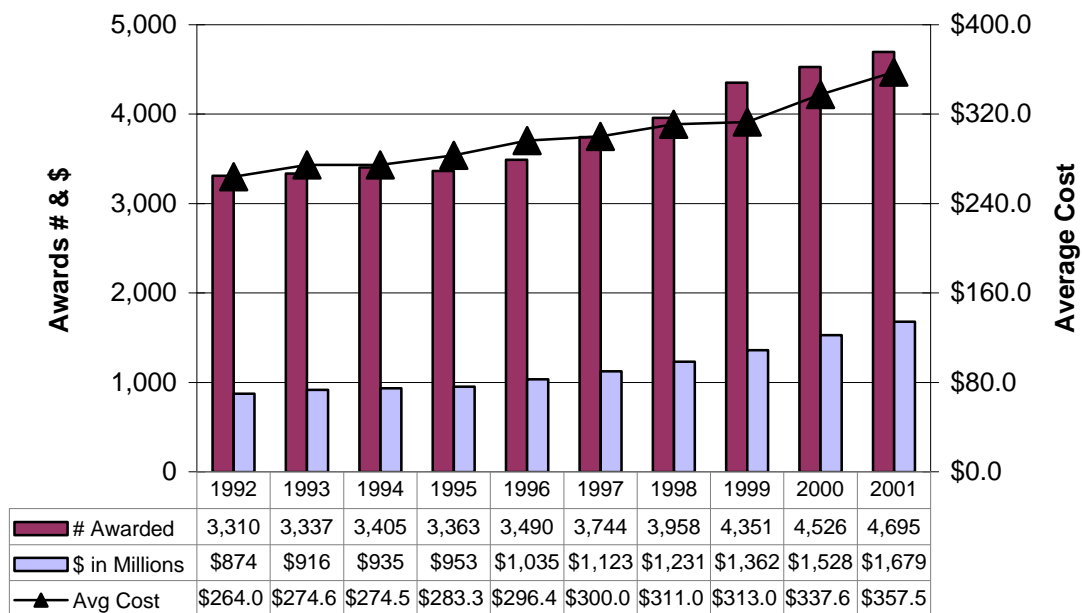
The requested data excludes applications not recommended for further review.

In FY 2001, the total excludes Program Evaluation Dollars at \$17,861, R21 Stamp Dollars at \$4,846 and R21 Flood Dollars at \$2,028.

RPG Awards by Activity Code Fiscal Years 1992-2001

(Dollars in Thousands; activity code descriptions on next page)

		R01	P01	R35	R37	R29	RFA	U01	R03	R21	R33	R15	R55	SBIR/ STTR	TOTAL
1992	#	2,050	183	76	162	309	208	123						199	3,310
	\$	424,954	205,330	59,878	47,414	29,726	45,107	44,171						17,277	873,857
1993	#	1,955	176	75	166	291	282	171					6	215	3,337
	\$	430,203	202,852	61,337	51,633	29,053	63,267	56,199					1,365	20,401	916,310
1994	#	1,914	163	72	154	312	319	232	46	5			9	179	3,405
	\$	434,612	184,852	61,369	48,699	32,610	70,879	75,444	2,393	353			540	22,773	934,524
1995	#	1,808	149	67	142	342	314	253	44	34			19	191	3,363
	\$	439,122	171,524	63,032	45,125	36,014	72,409	81,771	2,488	7,640			1,126	32,485	952,736
1996	#	1,964	144	65	110	388	268	226	85	46			14	180	3,490
	\$	504,398	182,609	62,550	37,070	41,170	66,102	88,962	5,443	9,599			984	35,643	1,034,530
1997	#	2,194	149	63	90	446	195	169	101	63			21	253	3,744
	\$	583,116	202,317	62,892	30,950	47,413	48,148	81,193	6,411	12,269			1,450	47,156	1,123,315
1998	#	2,454	160	57	75	485	132	157	97	76		2	14	249	3,958
	\$	672,873	228,854	57,712	27,212	52,136	42,750	79,370	6,069	11,782		127	684	51,207	1,230,776
1999	#	2,796	169	38	71	413	261	31	108	159	6	2	6	291	4,351
	\$	775,961	249,583	38,585	27,377	45,361	112,868	21,319	7,355	22,548	2,079	200	620	57,917	1,361,773
2000	#	3,011	179	21	60	314	269	18	100	223	20	0	5	306	4,526
	\$	898,764	286,234	19,413	24,688	34,769	132,872	13,617	7,034	32,897	10,074	99	450	67,090	1,528,001
2001	#	3,231	178	1	61	210	260	18	122	231	49	3	3	328	4,695
	\$	1,008,199	301,115	2,186	26,682	23,738	150,224	14,873	9,024	42,326	23,883	358	300	75,833	1,678,741



Activity Code Descriptions

R01	Research Project (Traditional) discrete, specified, circumscribed project to be performed by the named investigator(s) in an area representing his/her specified interest and competencies.
P01	Research Program Projects broadly based, multidisciplinary, often long-term, research program which has a specific major objective or a basic theme. A program project is directed toward a range of problems having a central research focus in contrast to the usually narrower thrust of the traditional research project.
R35	Outstanding Investigator Grants long-term support to an experienced investigator with an outstanding record of research productivity. This support is intended to encourage investigators to embark on long-term projects of unusual potential in a categorical program area.
R37	Method to Extend Research in Time (MERIT) Award long-term grant support to investigators whose research competence and productivity are distinctly superior and who are highly likely to continue to perform in an outstanding manner. Investigators may not apply for a MERIT award. Program staff and/or members of the cognizant National Advisory Council/Board will identify candidates for the MERIT award during the course of review of competing research grant applications prepared and submitted in accordance with regular PHS requirements.
R29	First Independent Research Support and Transition (FIRST) Award sufficient initial period of research support for newly independent biomedical investigators to develop their research capabilities and demonstrate the merit of their research ideas.
RFA	Request for Applications A formal statement inviting grant or cooperative agreement applications in a well-defined scientific area to accomplish specific program purposes and indicates the amount of funds set aside for the competition and/or the estimated number of awards to be made.
U01	Research Project (Cooperative Agreement) discrete, specified, circumscribed project to be performed by the named investigator(s) in an area representing his/her specific interest and competencies.
R03	Small Grants research support specifically limited in time and amount for studies in categorical program areas. Small grants provide flexibility for initiating studies, which are generally for preliminary short-term projects and are non-renewable.
R21	Exploratory/Developmental Grants Phase I development of new research activities in categorical program areas. Support generally is restricted in level of support and in time.
R33	Exploratory/Developmental Grants Phase II development of new research activities in categorical program areas. Support generally is restricted in level of support and in time.
R15	Academic Research Enhancement Award (AREA) to domestic health professional schools and other institutions offering baccalaureate or advanced degrees in health sciences, except those that have received NIH research grants and/or cooperative agreements. Supports feasibility studies and other small-scale research projects.
R55	Shannon Awards limited support to scientists whose research applications fall short of the cutoff for funding yet are at the "margin of excellence" whereby the perceived quality of the grant is statistically indistinguishable from grants that are funded.
R41	Small Business Technology Transfer (STTR) Grants - Phase I establish the technical merit and feasibility of R&D ideas which may ultimately lead to a commercial product(s) or service(s).
R42	Small Business Technology Transfer (STTR) Grants - Phase II establish the technical merit and feasibility of R&D ideas which may ultimately lead to a commercial product(s) or service(s).
R43	Small Business Innovation Research (SBIR) Grants - Phase I projects limited in time and amount, to establish the technical merit and feasibility of R&D ideas which may ultimately lead to a commercial product(s) or service(s).
R44	Small Business Innovation Research (SBIR) Grants - Phase II in-depth development of R&D ideas whose feasibility has been established in Phase I and which are likely to result in commercial products or services.

Cancer Centers by State (P30 Core Grants), Fiscal Year 2001

(Dollars in thousands)

State	Grantee Institution	Type	Amount
Alabama	Univ of Alabama at Birmingham	Comprehensive	\$4,542
Arizona	Univ of Arizona	Comprehensive	2,531
California	Beckman Research Institute/City of Hope	Comprehensive	2,193
	Burnham Institute	Lab/Basic	2,885
	Salk Institute	Lab/Basic	2,468
	Univ of California at Los Angeles	Comprehensive	3,263
	Univ of California at San Diego	Clinical	3,571
	Univ of California at Irvine	Comprehensive	1,673
	Univ of Southern California	Comprehensive	5,812
	Univ of California San Francisco	Comprehensive	1,435
Colorado	Univ of Colorado Health Sciences Center	Comprehensive	3,479
Connecticut	Yale Univ	Comprehensive	1,781
District of Columbia	Georgetown Univ	Comprehensive	2,999
Florida	Univ of South Florida	Clinical	2,053
Hawaii	Univ of Hawaii at Manoa	Clinical	1,893
Illinois	Northwestern Univ-Robert H. Lurie Cancer Center	Comprehensive	5,056
	Univ of Chicago	Comprehensive	2,017
Indiana	Indiana Univ.	Clinical	1,241
	Purdue Univ West Lafayette	Lab/Basic	1,115
Iowa	University of Iowa	Comprehensive	1,257
Maine	Jackson Laboratory	Lab/Basic	2,451
Maryland	Johns Hopkins Univ	Comprehensive	6,015
Massachusetts	Dana-Farber Cancer Institute	Comprehensive	10,171
	Massachusetts Institute of Technology	Lab/Basic	1,670
Michigan	Univ of Michigan at Ann Arbor	Comprehensive	4,891
	Karmanos Cancer Institute/Wayne State Univ	Comprehensive	702
Minnesota	Mayo Foundation	Comprehensive	3,106
	Univ of Minnesota Twin Cities	Comprehensive	1,437
Missouri	Washington University	Comprehensive	1,305
Nebraska	Univ of Nebraska Medical Center	Lab/Basic	1,100
New Hampshire	Dartmouth College	Comprehensive	1,738
New Jersey	Robert Wood Johnson Medical School	Clinical	2,399
New York	Cold Spring Harbor Laboratory	Lab/Basic	3,580
	Columbia Univ New York	Comprehensive	3,613
	Kaplan Cancer Center/NYU	Comprehensive	0
	Roswell Park Cancer Institute	Comprehensive	1,226
	Memorial Sloan-Kettering Institute	Comprehensive	6,030
	American Health Foundation	Lab/Basic	2,312
	Albert Einstein College of Medicine/Yeshiva Univ	Comprehensive	4,040
North Carolina	Duke Univ	Comprehensive	5,628
	Univ of North Carolina Chapel Hill	Comprehensive	5,144
	Wake Forest Univ/Bowman Gray Sch. Of Medicine	Comprehensive	1,490
Ohio	Case Western Reserve Univ	Comprehensive	3,757
	Ohio State Univ	Comprehensive	2,449
Oregon	Oregon Health Sciences Univ	Clinical	1,296
Pennsylvania	Fox Chase Cancer Center	Comprehensive	7,650
	Thomas Jefferson University	Clinical	4,220
	Univ of Pennsylvania	Comprehensive	5,146
	Univ of Pittsburgh	Comprehensive	3,881
	Wistar Institute	Lab/Basic	2,331
Tennessee	St. Jude Children's Research Hospital	Clinical	3,834
	Vanderbilt Univ	Clinical	3,036
Texas	San Antonio Cancer Institute	Comprehensive	2,353
	M.D. Anderson Cancer Center/Univ. of Texas	Comprehensive	5,431
Utah	Huntsman Cancer Institute/Univ of Utah	Clinical	1,238
Vermont	Univ of Vermont	Comprehensive	1,154
Virginia	Univ of Virginia/Health Sciences Center	Clinical	1,905
	VCU/Massey Cancer Center	Clinical	0
Washington	Fred Hutchinson Cancer Research Center	Comprehensive	7,651
Wisconsin	Univ of Wisconsin Madison	Comprehensive	5,103
	McArdle Laboratory for Cancer Research/Univ. of Wisconsin	Lab/Basic	0
	Total P30s	60	185,748
	Planning Grants		3,719
	NCI Co-funded Awards with other NIH Institutes		2,649

Total Cancer Centers

192,116

Specialized Programs of Research Excellence, Fiscal Year 2001

(Dollars in thousands)

In 1992, the NCI established the Specialized Programs of Research Excellence (SPORE). This program promotes interdisciplinary research and speeds the bidirectional exchange between basic and clinical science to move basic research findings from the laboratory to applied settings involving patients and populations. The goal of the SPORE program is to bring to clinical care settings novel ideas that have the potential to reduce cancer incidence and mortality, and to improve survival, and the quality of life.

Laboratory and clinical scientists work collaboratively to plan, design and implement research programs that impact on cancer prevention, detection, diagnosis, treatment and control. To facilitate this research, each SPORE develops and maintains specialized resources that benefit all scientists working on the specific cancer site, as well as SPORE scientists. An additional SPORE element is a career development program that recruits scientists both within and outside the SPORE institution to enlarge the cadre of laboratory and clinical scientists dedicated to translational research on human cancer. SPOREs meet annually to share data, assess research progress, identify new research opportunities and establish research priorities.

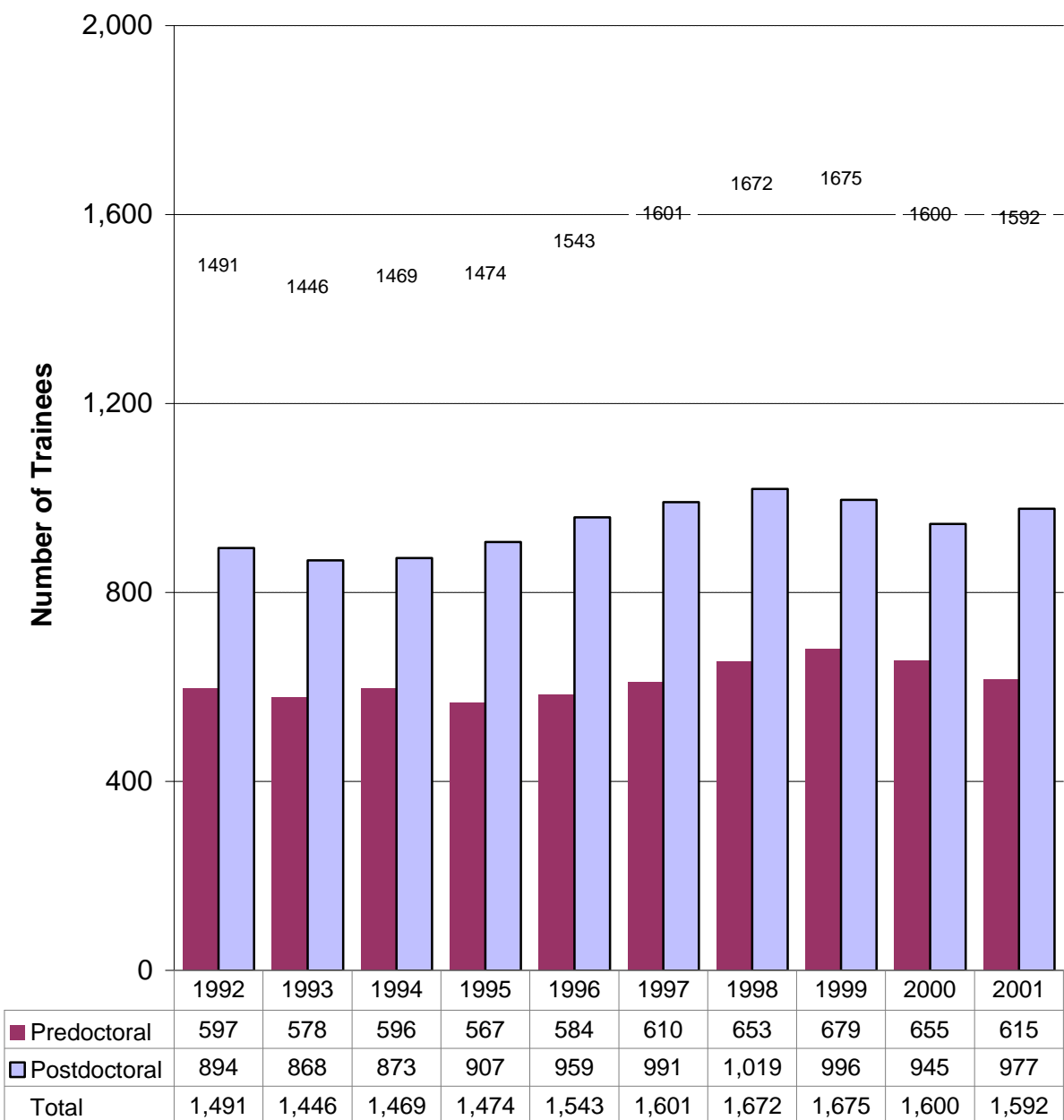
Mechanism	Site	No.	Amount
SPOREs	Bladder	1	\$2,501
	Breast	8	\$20,824
	Gastrointestinal	2	4,267
	Lung	6	12,764
	Prostate	8	19,598
	Skin	2	3,893
	Ovarian	4	9,549
	Total P50	31	73,396
Planning	Total P20	0	0
Supplement	Miscellaneous Supplements	0	1,726
	Minority Biomedical Supplements	0	199
	Total Supplements	0	1,925
Co-funded	Urology with NIDDK	3	523
	Oral with NIDCR	3	600
	Genome with NHGRI	1	400
	Total Cofunded	7	1,523
Total		38	\$76,844

NOTE:

Please note that some P50's have been counted as SPORES when funded as a T-3 with no non-competing or competing support - as an extension. When counting grants, neither the co-funds nor the Administrative Supplements (T-3A's) are counted, so there are 31 SPORES in FY2001.

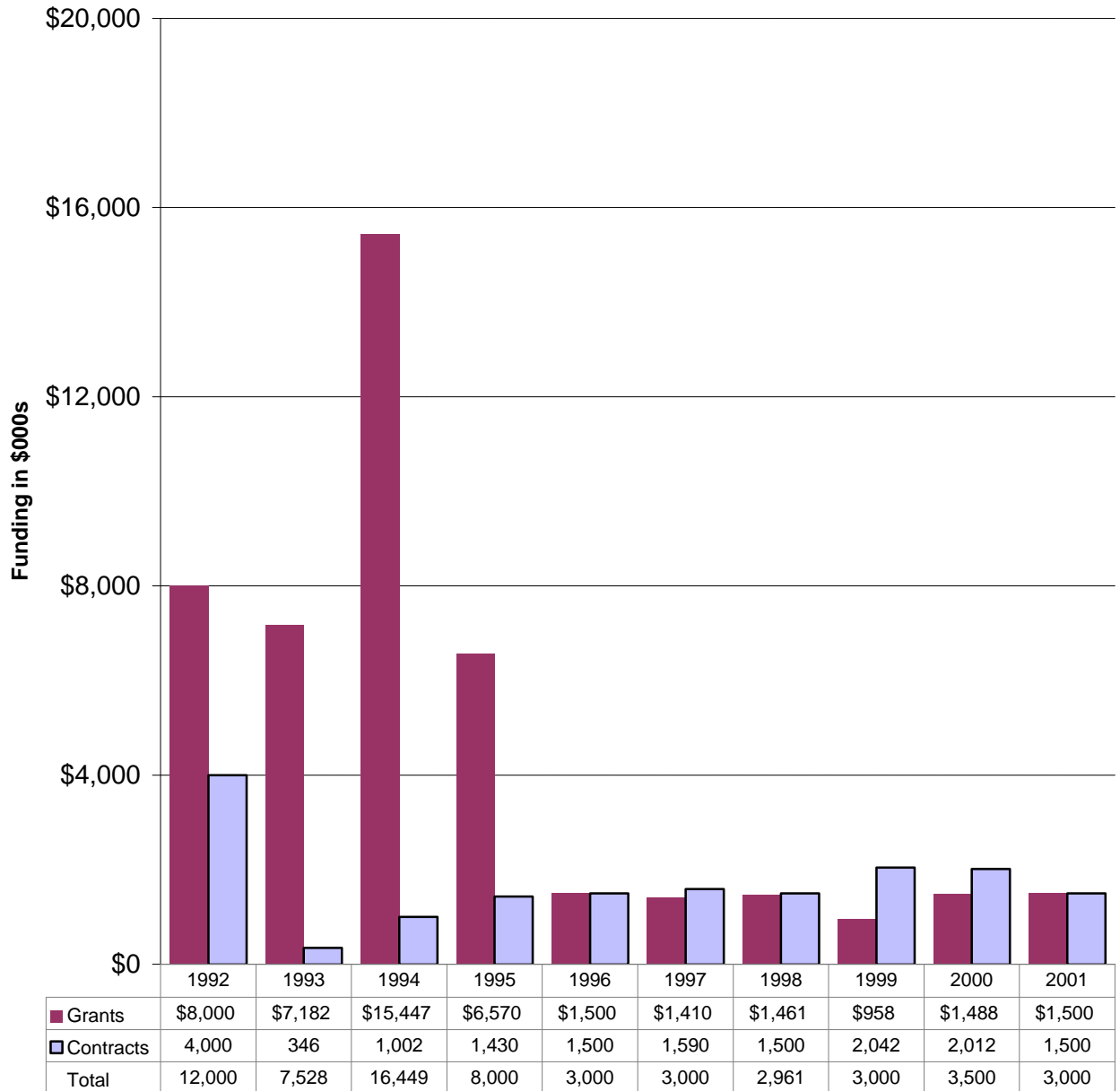
NRSA Predoctoral and Postdoctoral Trainees Fiscal Years 1992-2001

(Full Time Trainee Positions)



Construction/Renovation Funding Fiscal Years 1992-2001

(Dollars in Thousands)



Grant and Contract Awards by State Fiscal Year 2001

(Dollars in thousands)

State	Grants		Contracts		Total NCI		State
	No	Amount	No	Amount	No	Amount	
Alabama	64	\$32,053	13	\$6,076	77	\$38,129	Alabama
Alaska	2	1,141	0	0	2	1,141	Alaska
Arizona	54	29,850	1	231	55	30,081	Arizona
Arkansas	12	5,833	0	0	12	5,833	Arkansas
California	712	354,331	31	145,901	743	500,232	California
Colorado	87	30,724	2	3,204	89	33,928	Colorado
Connecticut	71	25,441	2	2,912	73	28,353	Connecticut
Delaware	5	1,717	0	0	5	1,717	Delaware
District of Columbia	62	31,883	19	7,331	81	39,214	District of Columbia
Florida	96	29,078	3	2,535	99	31,613	Florida
Georgia	49	15,047	11	3,671	60	18,718	Georgia
Hawaii	17	12,038	2	3,213	19	15,251	Hawaii
Idaho	0	0	0	0	0	0	Idaho
Illinois	177	75,441	19	6,242	196	81,683	Illinois
Indiana	58	17,920	0	0	58	17,920	Indiana
Iowa	41	12,287	3	4,697	44	16,984	Iowa
Kansas	20	8,222	6	3,567	26	11,789	Kansas
Kentucky	34	7,542	4	2,702	38	10,244	Kentucky
Louisiana	30	6,579	1	1,390	31	7,969	Louisiana
Maine	8	4,074	0	0	8	4,074	Maine
Maryland	188	87,283	73	117,775	261	205,058	Maryland
Massachusetts	517	246,060	5	3,074	522	249,134	Massachusetts
Michigan	170	65,112	10	15,018	180	80,130	Michigan
Minnesota	129	60,760	7	3,066	136	63,826	Minnesota
Mississippi	3	511	0	0	3	511	Mississippi
Missouri	95	30,308	5	2,804	100	33,112	Missouri
Montana	4	889	0	0	4	889	Montana
Nebraska	31	11,394	0	0	31	11,394	Nebraska
Nevada	3	1,126	0	0	3	1,126	Nevada
New Hampshire	42	17,969	1	170	43	18,139	New Hampshire
New Jersey	81	26,319	4	4,120	85	30,439	New Jersey
New Mexico	25	10,802	2	2,344	27	13,146	New Mexico
New York	516	218,233	15	9,561	531	227,794	New York
North Carolina	190	93,346	9	5,714	199	99,060	North Carolina
North Dakota	2	661	0	0	2	661	North Dakota
Ohio	200	67,786	14	7,336	214	75,122	Ohio
Oklahoma	15	3,243	1	79	16	3,322	Oklahoma
Oregon	48	16,780	0	0	48	16,780	Oregon
Pennsylvania	407	223,167	10	7,513	417	230,680	Pennsylvania
Rhode Island	39	12,466	0	0	39	12,466	Rhode Island
South Carolina	31	7,391	0	0	31	7,391	South Carolina
South Dakota	3	1,290	0	0	3	1,290	South Dakota
Tennessee	131	54,366	2	114	133	54,480	Tennessee
Texas	347	166,348	15	17,148	362	183,496	Texas
Utah	35	16,116	3	2,741	38	18,857	Utah
Vermont	14	8,722	0	0	14	8,722	Vermont
Virginia	85	24,929	3	3,117	88	28,046	Virginia
Washington	211	119,492	4	6,097	215	125,589	Washington
West Virginia	4	610	1	1,403	5	2,013	West Virginia
Wisconsin	83	33,426	5	2,830	88	36,256	Wisconsin
Wyoming	1	124	0	0	1	124	Wyoming
Total	5,249	2,328,230	306	405,695	5,555	2,733,925	Total
Guam	0	0	0	0	0	0	Guam
Puerto Rico	2	712	0	0	2	712	Puerto Rico
Total	5,251	2,328,942	306	405,695	5,557	2,734,637	Total

Excludes Manpower Development Grants, Foreign Contracts and Grants, and Program Evaluation.

Grant and Contract Awards by Country Fiscal Year 2001

(Dollars in Thousands)

Country	Grant		Contract		Total NCI		Country
	No	Amount	No	Amount	No	Amount	
Australia	14	\$2,778			14	\$2,778	Australia
Belgium	1	426	1	70	2	496	Belgium
Canada	20	4,410	2	723	22	5,133	Canada
China				41		41	China
Costa Rica			1	2,897	1	2,897	Costa Rica
Denmark			1	70	1	70	Denmark
France	3	819			3	819	France
Germany	1	90			1	90	Germany
India	1	170			1	170	India
Israel	5	709			5	709	Israel
Italy			2	1,051	2	1,051	Italy
Jamaica			1	210	1	210	Jamaica
Japan			1	170	1	170	Japan
Netherlands	1	109			1	109	Netherlands
New Zealand			1	125	1	125	New Zealand
Poland			1	490	1	490	Poland
South Africa	1	192			1	192	South Africa
Spain	1	180			1	180	Spain
Sweden			1	46	1	46	Sweden
United Kingdom	5	1,095			5	1,095	United Kingdom
Total Foreign	53	10,978	12	5,893	65	16,871	

Institutions Receiving More than \$15 Million in NCI Support, FY 2001

(Dollars in thousands)

State	Institution	Grants	Contracts	Construction	Total NCI
Alabama	Univ of Alabama System	\$29,286	\$3,085		\$32,371
Arizona	Univ of Arizona	28,234	232		28,466
California	Nat'l Childhood Can. Foundation	24,634			24,634
	Science Applications Int'l Corp		119,819	800	120,619
	Scripps Research Institute	17,785			17,785
	Stanford Univ	35,594			35,594
	Univ of California System	155,231			155,231
	Univ of Southern California	34,342	2,987		37,329
Colorado	Univ of Colorado Hlth Sciences Ctr	17,541	2,221		19,762
Connecticut	Yale Univ	22,020			22,020
Dist of Columbia	Georgetown Univ	16,447			16,447
Illinois	Northwestern Univ	19,979			19,979
	Univ of Chicago	29,977			29,977
Iowa	Univ of Iowa	10,796	4,697		15,493
Maryland	Johns Hopkins Univ	65,087	1,565		66,652
	Westat, Inc.		15,215		15,215
Massachusetts	Beth Israel Deaconess Med Ctr	16,162			16,162
	Brigham & Women's Hospital	31,736			31,736
	Dana-Faber Cancer Institute	54,283			54,283
	Harvard Univ	31,876			31,876
	Mass General Hospital	30,513			30,513
Michigan	Univ of Michigan at Ann Arbor	44,919	3,309		48,228
	Wayne State University	12,292	6,704		18,996
Minnesota	Mayo Clinic, Rochester	39,192	1,596		40,788
	Univ of Minnesota Twin Cities	21,461			21,461
Missouri	Washington Univ	22,742	1,419		24,161
New Hampshire	Dartmouth College	17,099	170		17,269
New York	Columbia Univ Health Sciences	20,170			20,170
	Sloan-Kettering Institute for Cancer Rsch	49,492	2,554		52,046
	Mount Sinai School of Medicine	16,874			16,874
	Roswell Park Cancer Institute	22,028			22,028
	Yeshiva Univ	24,135			24,135
North Carolina	Duke Univ	51,811			51,811
	Univ of North Carolina Chapel Hill	34,213	92		34,305
Ohio	Case Western Reserve Univ	25,746	599		26,345
	Ohio State Univ	19,947	836		20,783
Pennsylvania	American College of Radiology	21,019			21,019
	Fox Chase Cancer Center	24,687	2,992		27,679
	NSABP Foundation, Inc.	24,464			24,464
	Thomas Jefferson Univ	25,004			25,004
	Univ of Pennsylvania	53,847	1,958		55,805
	Univ of Pittsburgh	37,659			37,659
Tennessee	St. Jude Children's Res. Hosp	19,741			19,741
	Vanderbilt Univ	31,741			31,741
Texas	Baylor College of Medicine	29,942	203		30,145
	CTRC Research Foundation	29,839			29,839
	Univ of Texas System	105,260	6,549		111,809
Utah	Univ of Utah	16,451	2,741		19,192
Virginia	Univ of Virginia Charlottesville	15,270			15,270
Washington	Fred Hutchinson Cancer Research Center	75,489	4,011		79,500
	Univ of Washington	26,767	755		27,522
Wisconsin	Univ of Wisconsin Madison	28,268	2,461		30,729
	Total	1,659,092	188,770	800	1,848,662

Includes Manpower Development Grants

Appropriations of the NCI 1938-2001

(In Whole Dollars)

1938 - 1969	\$1,875,699,720	
1970 - 1979	6,073,870,500	
1980 - 1989	11,958,860,000	
1990.....	1,664,000,000	prior to reductions in PL 101-166 (-\$6,839,000) and PL101-239 (-\$22,829,000).
1991.....	1,766,324,000	prior to reductions in PL 101-517 (-\$8,972,000 for salary and expense reduction; -\$42,568,000 for across-the-board reduction).
1992.....	1,989,278,000	prior to reductions in PL 102-170 (-\$21,475,000 for salary and expense reduction; -\$1,262,000 for travel reduction; \$15,000,000 transferred to other institutes for cancer research).
1993.....	2,007,483,000	prior to reductions in PL 102-294 (-\$16,060,000 for .8% reduction to all line items, -\$9,933,000 for S&E reduction, -\$139,000 for consultant services reduction).
1994.....	2,082,267,000	prior to reduction in PL103-211 (-\$5,885,000 administration reduction).
1995.....	2,135,119,000	prior to reductions in PL 103-211 (-\$1,883,000 for Procurement reduction; -\$116,000 for SLUC reduction; -\$1,052,000 for Bonus Pay reduction). Includes \$218,199,000 of AIDS funding.
1996.....	2,251,084,000	Includes \$225,790,000 of AIDS funding.
1997.....	2,382,532,000	Includes \$224,983,000 of AIDS funding.
1998.....	2,547,314,000	prior to reductions in PL 105-119 (-\$4,755,000 via the Secretary's 1% transfer authority). Includes \$8,699,000 transferred via the NIH Director's 1% transfer authority, \$41,000 transfer from U.S. Dept of State in PL 105-119, and \$226,414,000 of AIDS funding.
1999.....	2,927,187,000	prior to reductions in PL 106-51 (-\$1,940,000 for travel and admin expenses). Includes -\$931,000 transferred via the Secretary 1% transfer authority, and -\$6,259,000 transferred via the NIH Director's 1% transfer authority, and \$239,190,000 of AIDS funding.
1990 - 1999	21,752,588,000	
2000.....	3,332,317,000	Appropriation prior to reductions in PL 106-113 (-\$17,763,000 for across the board reduction). Includes \$245,804,000 of AIDS funding.
2001.....	3,757,242,000	Appropriation prior to reductions in PL 106-554(-\$2,005,000 for across the board reduction). Includes -\$711,000 Secretary's 1% transfer, -\$781,000 transfer for Office of Human Research Protection and -\$24,000 lapse. Includes \$255,960,000 of AIDS funding.
1938-2001	48,750,577,220	

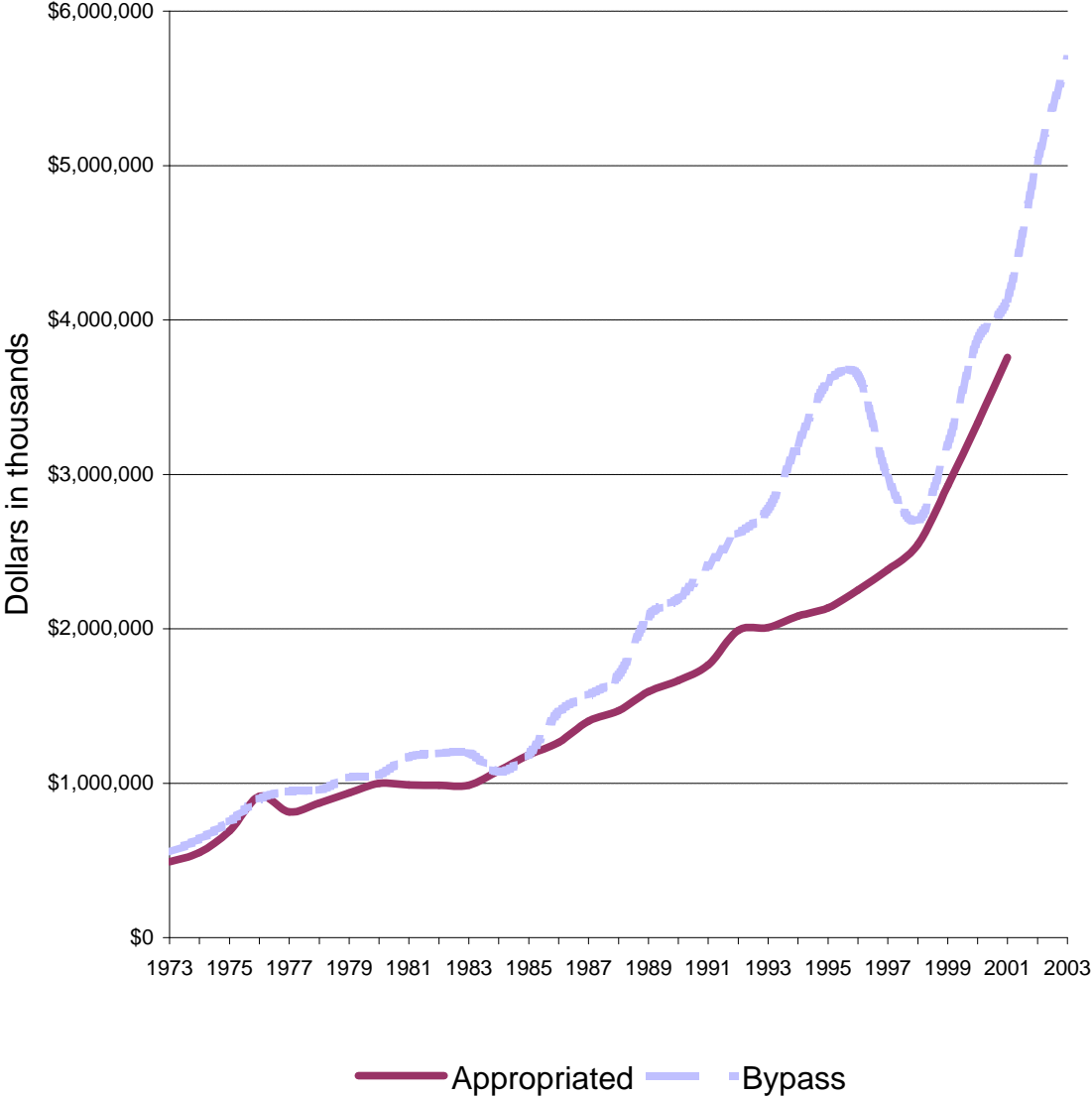
By-Pass Budget Requests Fiscal Years 1973-2003

(In Whole Dollars)

Fiscal Year	Request
1973.....	\$550,790,000
1974.....	640,031,000
1975.....	750,000,000
1976.....	898,500,000
1977.....	948,000,000
1978.....	955,000,000
1979.....	1,036,000,000
1980.....	1,055,000,000
1981.....	1,170,000,000
1982.....	1,192,000,000
1983.....	1,197,000,000
1984.....	1,074,000,000
1985.....	1,189,000,000
1986.....	1,460,000,000
1987.....	1,570,000,000
1988.....	1,700,000,000
1989.....	2,080,000,000
1990.....	2,195,000,000
1991.....	2,410,000,000
1992.....	2,612,000,000
1993.....	2,775,000,000
1994.....	3,200,000,000
1995.....	3,600,000,000
1996.....	3,640,000,000
1997.....	2,977,000,000
1998.....	2,702,500,000
1999.....	3,191,000,000
2000.....	3,873,000,000
2001.....	4,135,000,000
2002.....	5,030,000,000
2003.....	5,690,000,000

The National Cancer Act in December 1971, included a provision for the Director, NCI to submit an annual budget request directly to the President, with comment only by NIH and DHHS. This Bypass Budget was first submitted for 1973.

Bypass Requests and Appropriations of the NCI 1973-2003



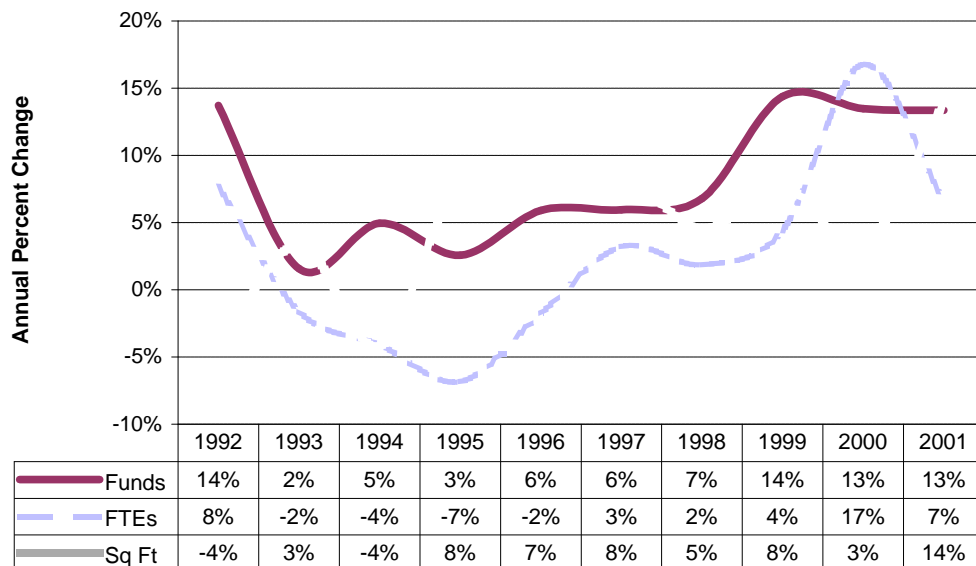
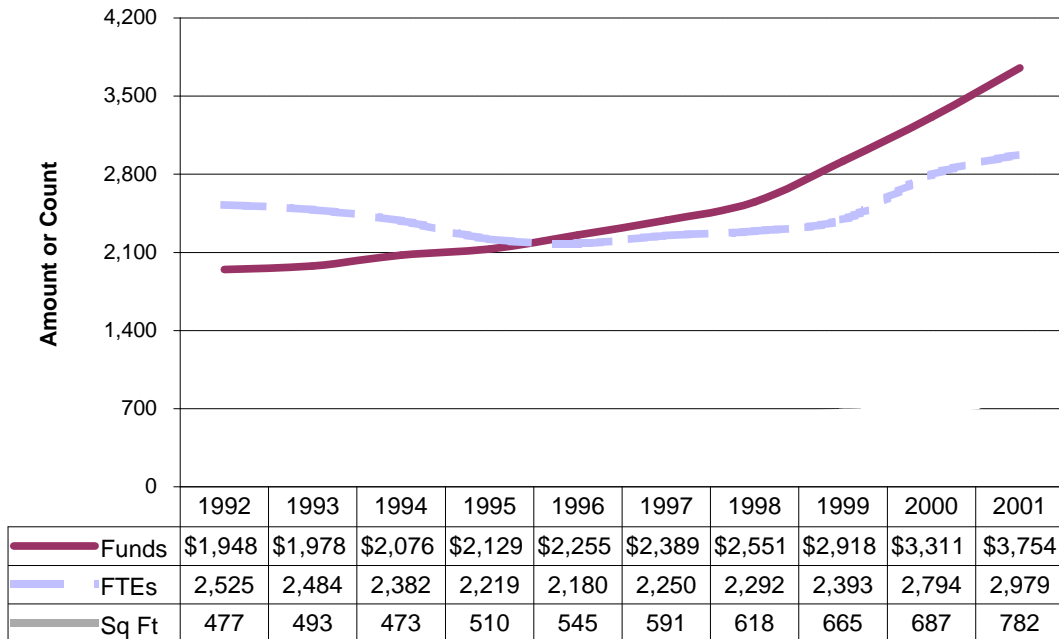
Comparison of Dollars, Positions and Space Fiscal Years 1991-2001

Funds are obligations against the annual appropriation in millions of dollars

FTEs are the number of workyears for appointed employees of the NCI. A workyear equals 2080 hours.

The increase in FTEs in FY 2000 is due to the fact that 195 contract staff are converted to NCI appointments.

Space is thousands of sq feet excluding the Frederick Cancer Research and Development Center.



Personnel Resources
Fiscal Years 1995-2001

Fiscal year	Full Time Appointment	Part Time Appointment	Training Fellows	Total Personnel Resources
1995	1767	483	1055	3305
1996	1841	460	960	3261
1997	1915	422	1023	3360
1998	1921	466	1124	3511
1999	1941	628	1060	3629
2000	2139	831	1202	4172
2001	2224	912	963	4099

AIDS Funding History

Fiscal Years 1991-2001

(Dollars in Thousands)

Fiscal Year	NCI	NIH	% NCI of NIH
1991	\$160,869	\$799,821	20%
1992	\$165,668	\$1,047,294	16%
1993	173,029	1,073,957	16%
1994	212,868	1,298,996	16%
1995	217,430	1,333,600	16%
1996	225,360	1,411,860	16%
1997	224,733	1,501,073	15%
1998	225,991	1,559,071	14%
1999	239,190	1,797,422	13%
2000	244,145	2,005,100	12%
2001	255,960	2,244,160	11%

