

# GUAHAN

*REPORT 2010*



**USCRTF MEETING**  
**Saipan, CNMI**  
**13-17 September 2010**

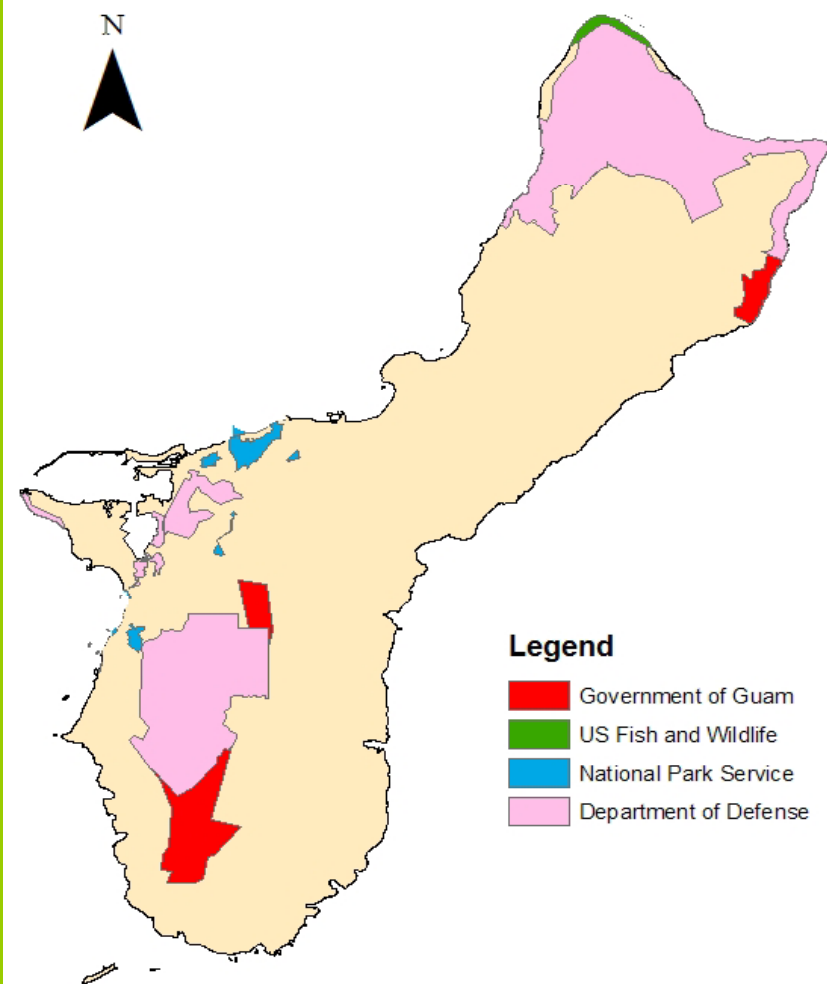
# Micronesia Challenge





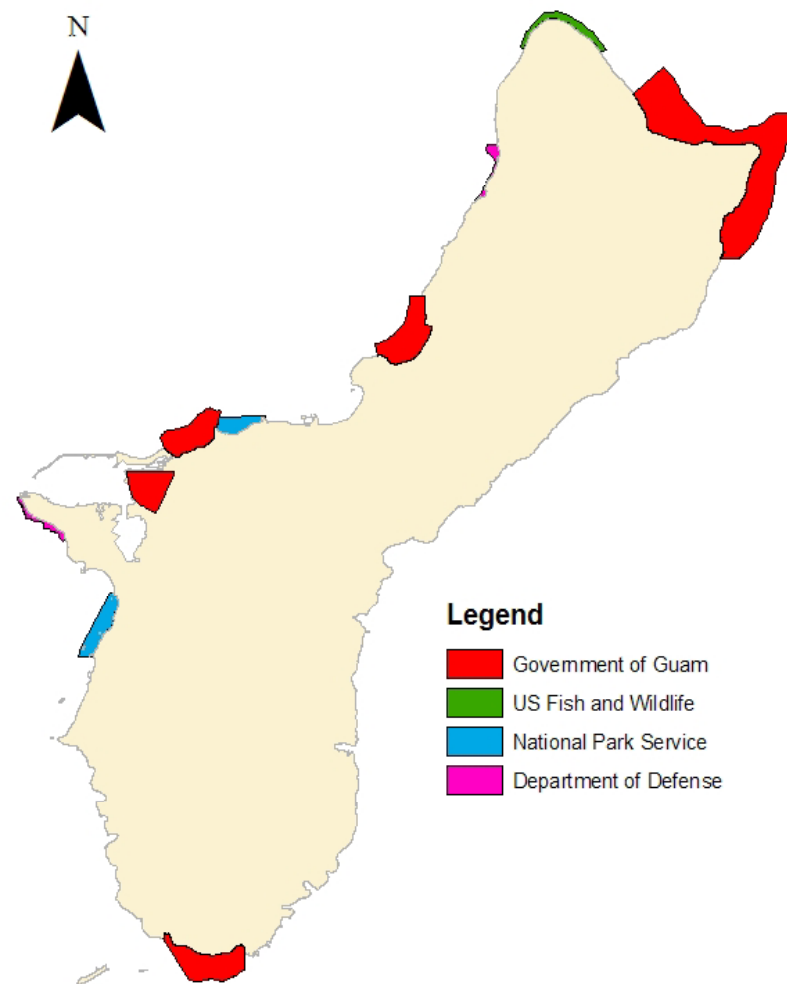
# MICRONESIA CHALLENGE - GUAM

## Current Terrestrial Managed Areas



Total Area: 123.86 km<sup>2</sup> (22%)

## Current Marine Managed Areas



Total Area: 42.63 km<sup>2</sup> (15.45%)

# Guam prepares to host the largest military presence since World War II!



B2 Bombers over Andersen AAFB



Navy ship entering Apra Harbor



EODMU5 Static Line  
Jumping – Yigo, GU



Marines - Island-wide Exercises



# SUPPORT LOCAL ACTION STRATEGIES!

FISHERY MANAGEMENT



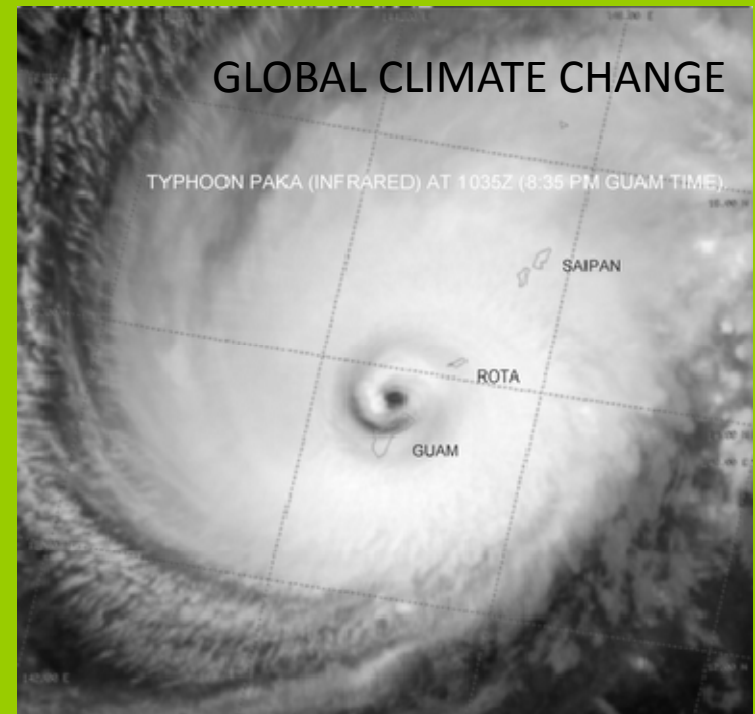
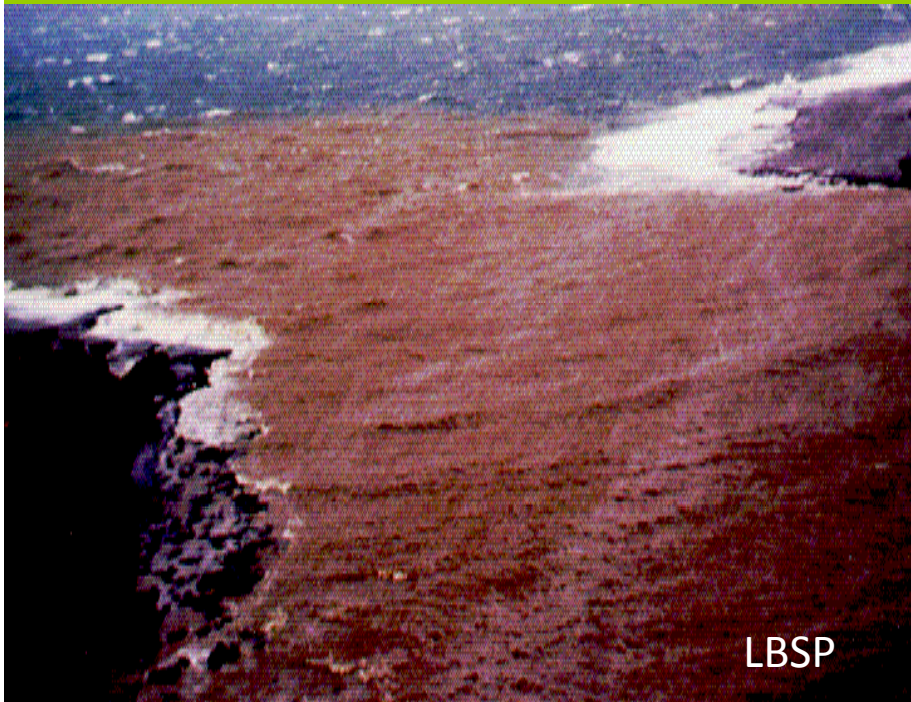
LACK OF AWARENESS



REC. MISUSE



# SUPPORT LOCAL ACTION STRATEGIES!





MC partnership

Improve conservation in their communities



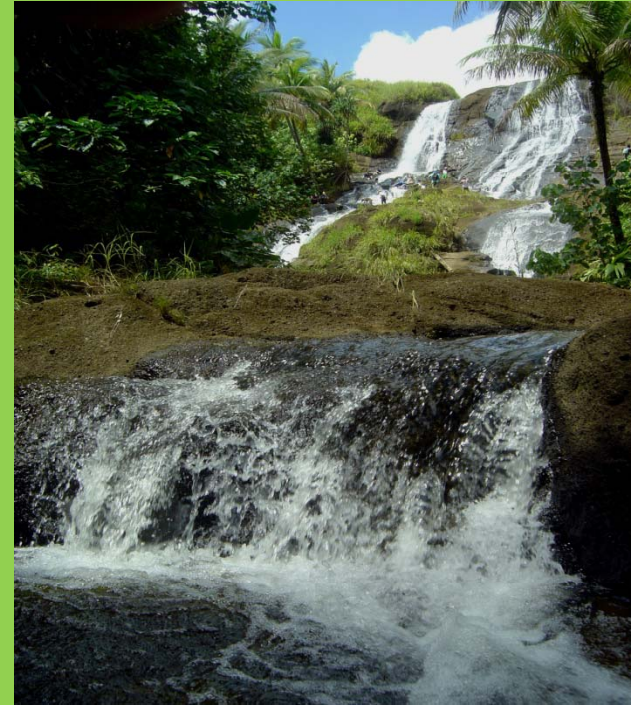


# North and Central Land Use Plan- guide sustainable growth





# Educating the community





# Continuous Development & Increasing Population







# LOCAL AGENCIES NEED SUPPORT FOR CAPACITY



"Our Coasts, Our Future"



# FROM OUR FEDERAL PARTNERS



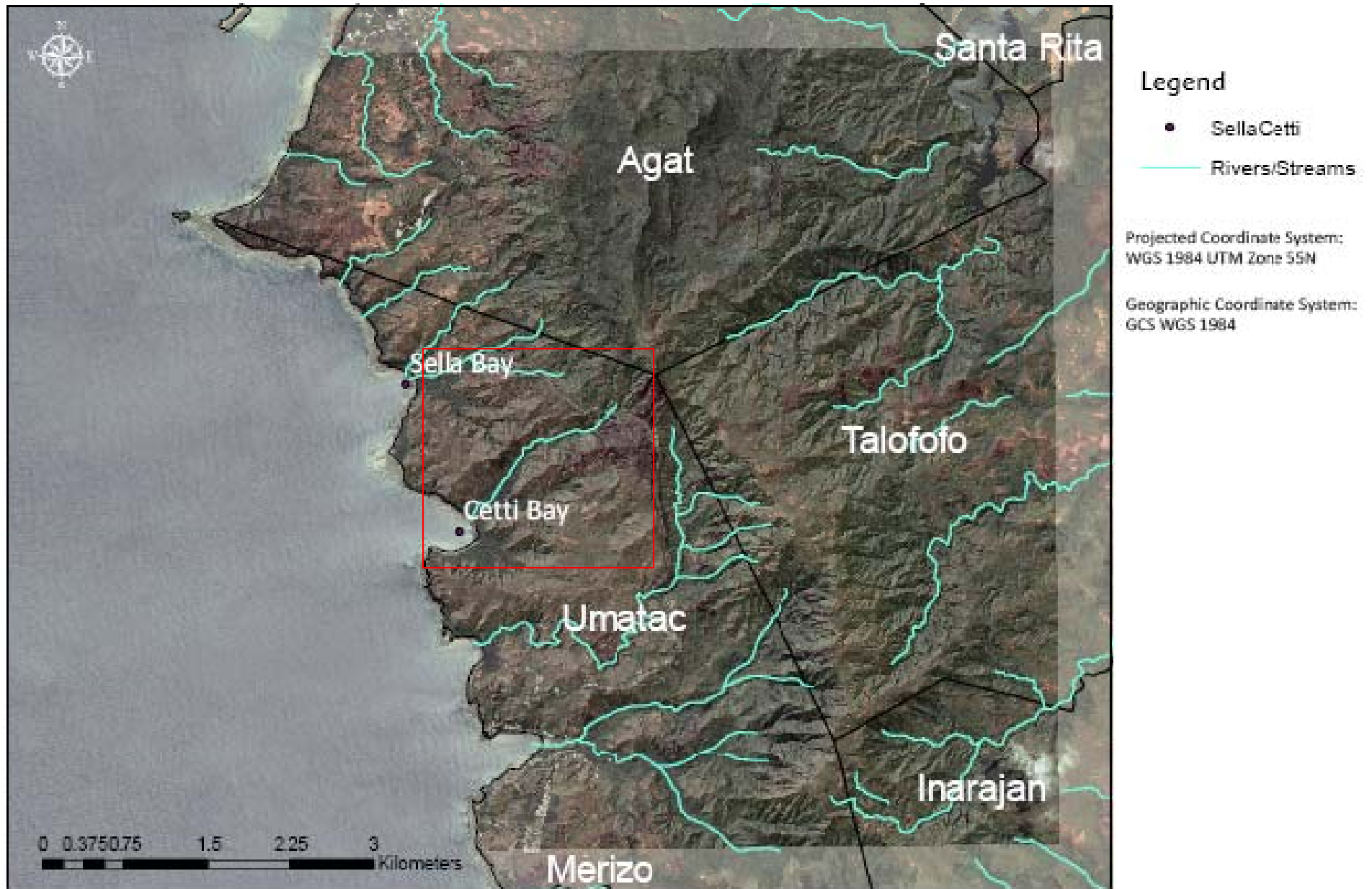
Despite the increased development and boat traffic, Apra Harbor still has functional coral reef ecosystems! Some species are found nowhere else on Guam!





# Cetti Bay Site Map

- Watershed Restoration (Mitigation for Kilo Wharf)



Created by Romina King - Bureau of Statistics and Plans Guam Coastal Management Program on 15 June 2008 for Guam RARE Pride Application

This map is for planning purposes only!  
May not be used for litigation.

# Cetti Bay – Off-site mitigation for Kilo Wharf





# SUPPORT LOCAL MONITORING!





# Support regional effort to address Climate Change





# PROTECT OUR REEFS!

LEAVE NOTHING BEHIND! TUMON BAY IS ONE OF GUAM'S FIVE MARINE PROTECTED AREAS WHICH HAS BEEN SET ASIDE TO PROTECT AQUATIC ANIMALS AND CORAL REEF HABITATS.

LEARN MORE. [www.bspguam.com](http://www.bspguam.com)



OUR COASTS. OUR FUTURE.



Photo: © Jim Rock. Design: NYO 97mberg

**Si yu'us ma'ase!**