



Photo by: Frantastic

CNMI GOVERNOR'S REMARKS

Governor Ben Fitial
U.S. Coral Reef Task Force
February 23, 2012 - Washington, D.C.



Photo by: Frantastic

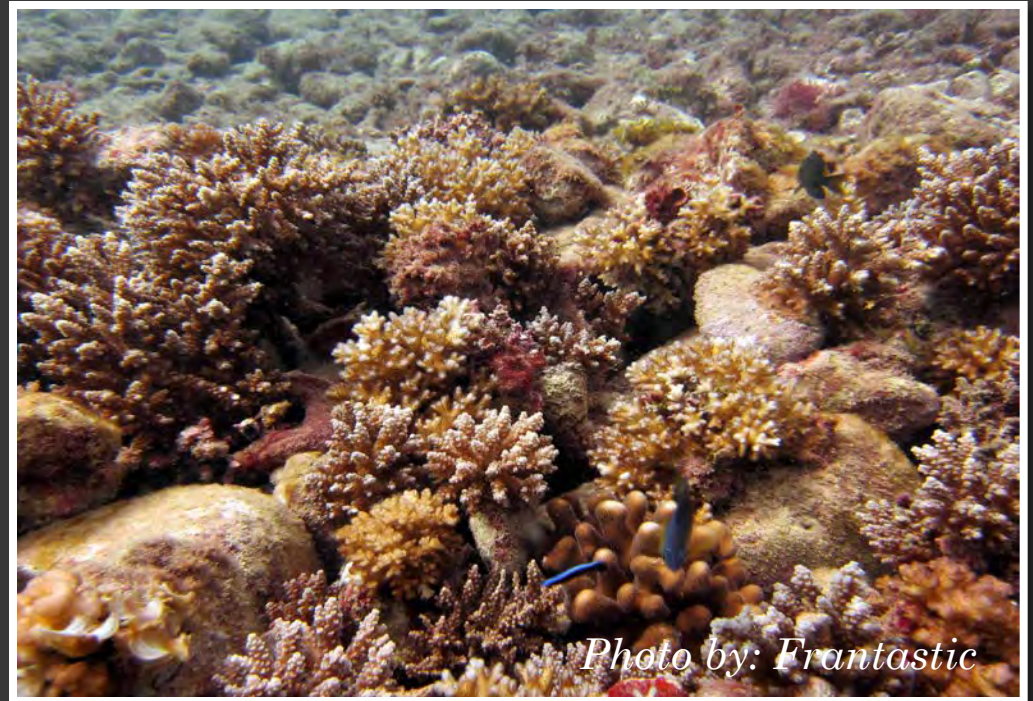


Photo by: Frantastic

Watershed Partnership Initiatives

Faga'alu, American Samoa

West Maui, Hawaii

Guanica, Puerto Rico

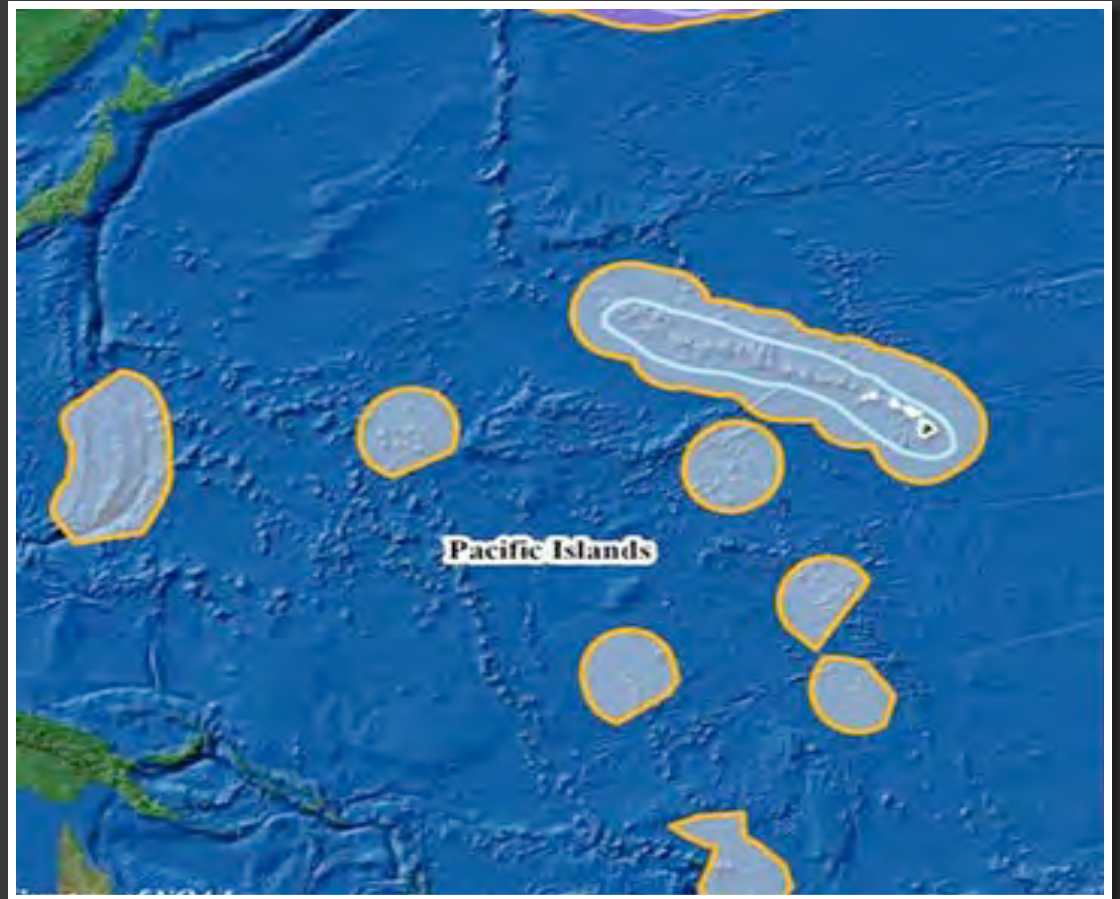
-Support for Plus-One Watershed



Pacific Regional Ocean Partnership

-American Samoa,
CNMI, Guam and
Hawaii

-Initial meeting,
May, 2012





LAOLAO BAY ROAD AND COASTAL MANAGEMENT IMPROVEMENT PROJECT



- Partnered with NOAA Habitat Restoration Center
- \$2.9 million
 - Road and drainage improvement
 - Revegetation
 - Ecological monitoring



LAOLAO BAY

Road and drainage improvement



Stream Crossing #2



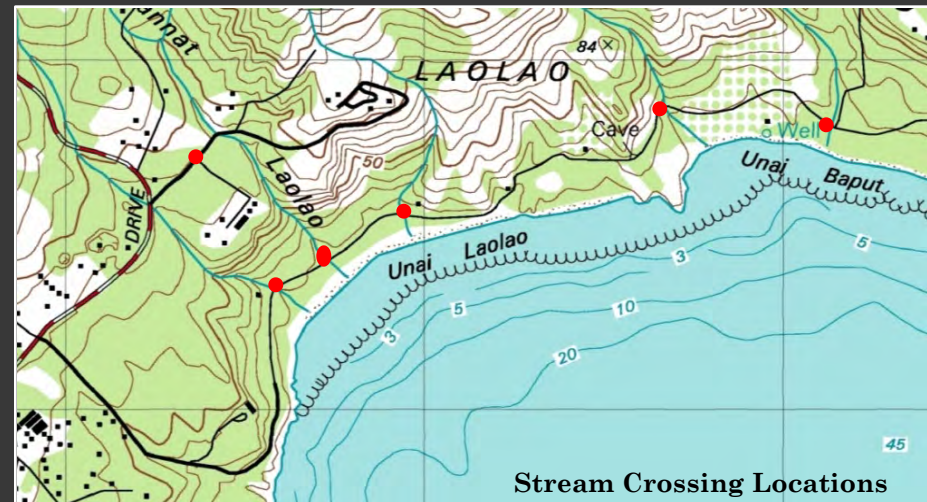
Photo by: Frantastic

Additional Erosion Controls & Habitat Protection

Low-Volume Roads Engineering
Training Workshop

Stream Crossings & Bollards

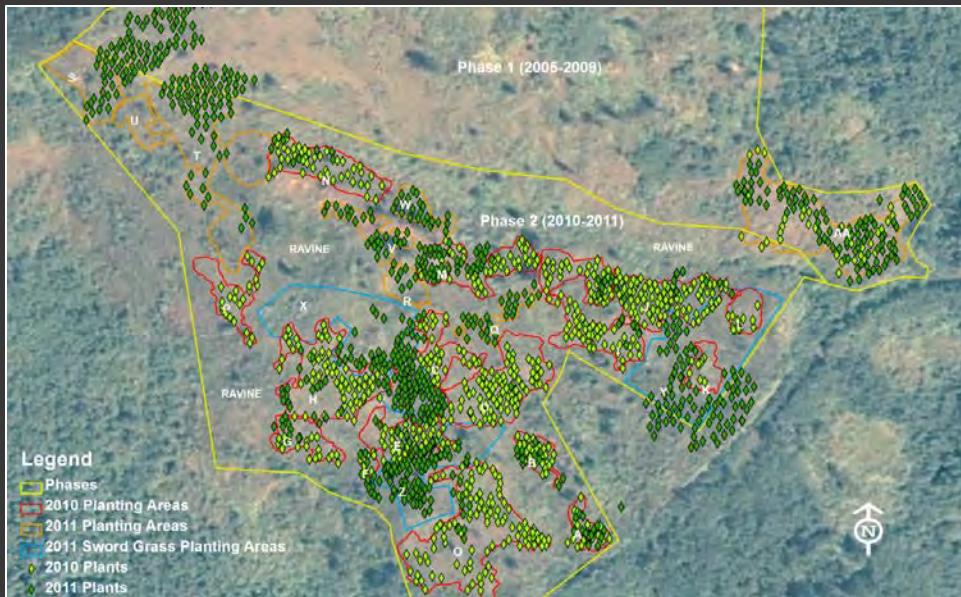
LauLau Bay Dr. & GapGap Rd.
Regrading



Stream Crossing Locations

Revegetation

- Partnership with DLNR Forestry, CRM, NRCS & DFW
- 14-acre deforested upland site
- 1,600+ plants representing 12 native species
- 5,000+ linear feet of Vetiver grass
- 80% overall survival rate
- Status: planting complete, plant health monitoring ongoing.

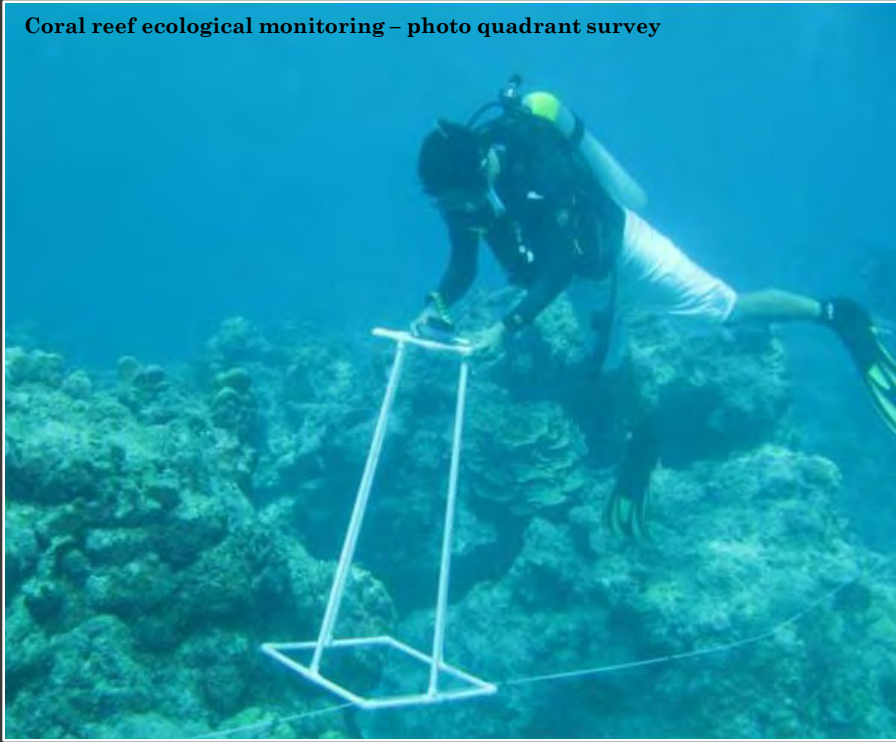


GIS map of planting areas & plant locations



DLNR Forestry staff

Coral reef ecological monitoring – photo quadrant survey

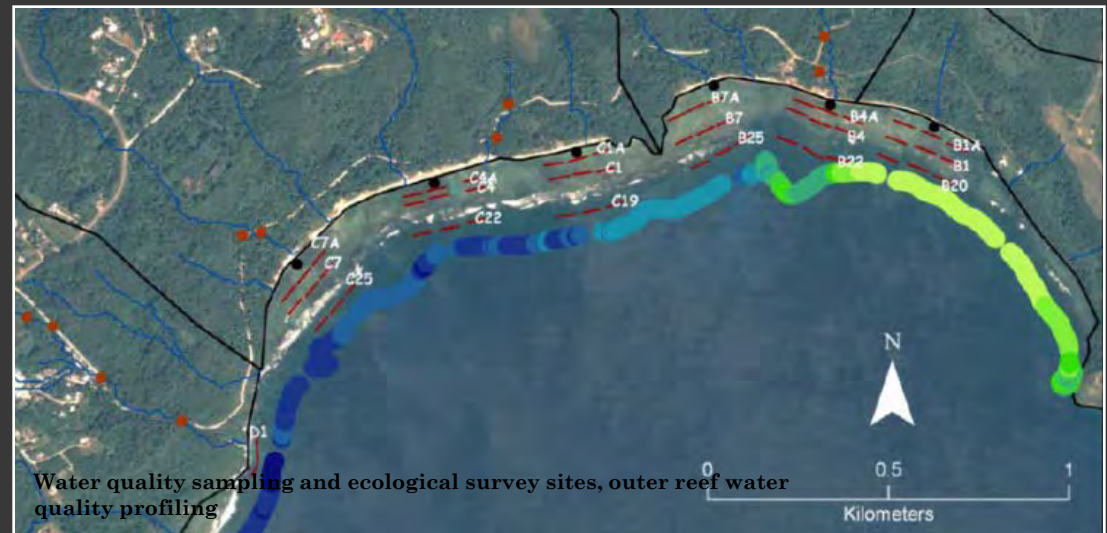


Marine Monitoring

- LaoLao Bay Coral Reef & Water Quality Monitoring Plan completed March 2010
- Baseline ecological survey of reef flat and reef slope assemblages completed January 2011 (benthic, coral population, fish, macroinvertebrate data)
- Phase I report comparing current ecological data to 1992 study completed April 2011 (available online at www.pacmares.com/Laolao_Bay.html)
- Status:
- WQ monitoring of streams and reef flat ongoing
- Water quality profiling of outer reef ongoing
- Summary report to be completed September 2012



Reef flat water quality monitoring



Water quality sampling and ecological survey sites, outer reef water quality profiling

TALAKHAYA, ROTA

- Continued community revegetation project
 - over 100,000 seedlings planted since 2007.
 - program to be expanded by 50% in 2012; expecting 30,000+ seedlings to be planted.
- Continued marine monitoring of the associated waters show marked improvement in coral cover
- Soil erosion study to be completed in 2012, providing a more detailed look at project success.





- Completed Conservation Action Plan (CAP)
- Hiring of 2 seasonal field agents in 2011
 - 0 fires in the watershed during 2011
- Completed documentary on the revegetation project

CNMI CORAL BLEACHING RESPONSE PLAN

A guide for resource managers in the event of mass coral bleaching

- Final stages of draft
- Developed by local and federal partners
- Comprehensive in scope:
 - monitoring assessment protocol;
 - media relations;
 - public education & awareness



Photo by: D.Burdick

L50 Campaign

- Developed in collaboration with the NOAA coral ecologists.
- The poster depicts 30 of the most commonly caught reef fish in the Marianas, painted to their L50 size.
- The two sided, water proof brochure pictures 22 of the more commonly caught reef fish, with their associated L50 size.
- On the reverse side, the brochure also details MPA boundaries and other fishing restrictions of the CNMI.

Mariana Archipelago Reproductive Size L50

This poster shows the average size at first maturity, the size at which 50% of a species can produce eggs (also called L50). By allowing the fish to reach their L50 size before harvesting, we can improve the long-term sustainability of our fishery. Fish much larger than their L50 can produce greater numbers of healthier eggs. If we allow some fish to reach these larger sizes and spawn, there will be more fish to harvest in the future.

Species and L50 Data:

- Gadão mattingan / Buei / Bwele: L50: 15.1 in. - 5-5 years
- Gadão / Buei / Bwele honeycomb groupers: L50: 6.5 in. - 1.1 years
- Tábaga / Ieh-falafal blacktip unicornfish: L50: 13.4 in. - 3 years
- Gadão / Metejiil blacktip groupers: L50: 6.2 in. - 4.6 years
- Káhu / Limell convict tang: L50: 5 in.
- Tarakitu / Langul bluefin trevally: L50: 13.8 in. - 2.7 years
- Tijok / Tíasing blue tang unicornfish: L50: 5.7 in. - 1 year
- Sis'ok / Sara talang groupers: L50: 11.6 in. - 2 years
- Hangon / Bwuladaw gray snappers unicornfish: L50: 9.5 in. - 2 years
- Sáksak / Sagamon / Mweel big-eye scud: L50: 8.4 in. - 8 months
- Abilai / Feti big-eye scud: L50: 7.2 in. - 8 months
- Guli, Geppan / Réel snappers groupers: L50: 15.4 in. - 4.9 years
- Sáksak / Sagamon / Mweel bigscale soldier fish: L50: 7.3 in. - 2 years
- Buha, Bunan pintu, Kaka'ka / P'ooow snappers groupers: L50: 12.7 in. - 3 years
- Guli, Geppan / Schepwul snappers groupers: L50: 11.4 in. - 2.7 years
- Fala'ol / Masetcha humpback snappers: L50: 11.8 in. - 2.7 years
- Mafute / Wejaw blackspot emperors: L50: 8.2 in. - 1.5 years
- Palakse / Lagua / Váar red snappers: L50: 14.7 in. - 3 years
- Locha, Palakse / Kaban sea grass parrotfish: L50: 8.3 in.
- Palakse / Lagua / Oscha pacific striped parrotfish: L50: 12.2 in. - 3 years
- Palakse / Lagua / Oscha pacific parrotfish: L50: 5.9 in. - 9 months
- Gualain, Laguan diso / Amaniju / Oscha pacific parrotfish: L50: 5.0 in. - 1 year
- Lalacht / Namáte / P'orenu tropical wrappers: L50: 7.3 in. - 3 years
- Satmoneti / Laladong / Sowainnonn yellowhead goatfish: L50: 11.4 in. - 3 years
- Satmoneti / Pintu / Lalighi dash-dot goatfish: L50: 7.6 in. - 3.3 years
- Satmoneti / Wíachigh blowstripe goatfish: L50: 7.7 in. - 2.5 years
- Sesujon / Hiteng kahlao / L'legh tropical rabbit fish: L50: 6.7 in. - 10 months
- Sesujon / Hiteng / Palawa scabbard goatfish: L50: 5.3 in. - 4 months
- Mahongang / útur spiny lobster
- Mangpang / úur slipper lobster

Logos: MNA, PMPH, and other local and international organizations.

- Aimed at raising awareness among fisherman as to how the L50 tools can be used and how they can help promote sustainable fishing.
- Sponsored prizes at local fishing tournaments.
- Ran advertisements in local papers, magazines, and radio
- Run contests asking fishermen to send in pictures of them measuring their catch.



Midi: to measure



ESA Coral Listing Process

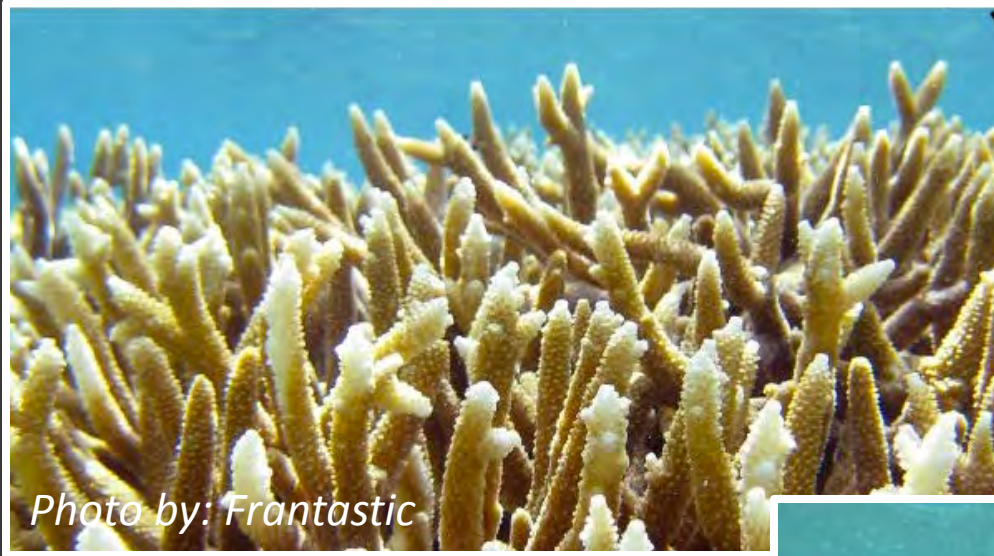


Photo by: Frantastic



Photo by: P-nyce





ENDORSEMENT OF MICRONESIA CHALLENGE SUSTAINABLE FINANCE PLAN

Governor of CNMI endorses the Challenge's Sustainable Finance Plan



On February 13, 2012, Governor Benigno Fitial of the CNMI officially endorsed the Micronesia Challenge Sustainable Finance Plan.

[Click here to read Fitial's endorsement letter.](#)



MAJURO CHALLENGES



Photo by: Dean Jacobson

Thank you, Si Yu'us Ma'ase and Olomwaay



Forbidden Island, Saipan
Photo by: Frantastic