

Run the Certifications Details Report

This tip sheet will guide you through locating and generating the Certification Dashboard by Learners report. The report generates a list of your certifications, their statuses and expiration dates, based on selected parameters.

1. Log on to the LMS.

NOTE: For instructions about logging on, refer to the Log On Instructions (TS02-L) tip sheet.

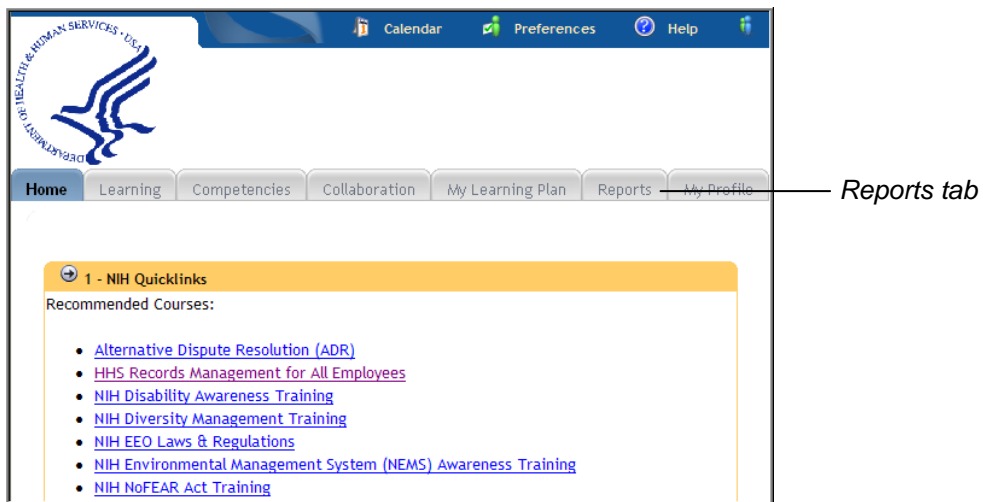


Figure 1: Home tab

2. Click the **Reports** tab.

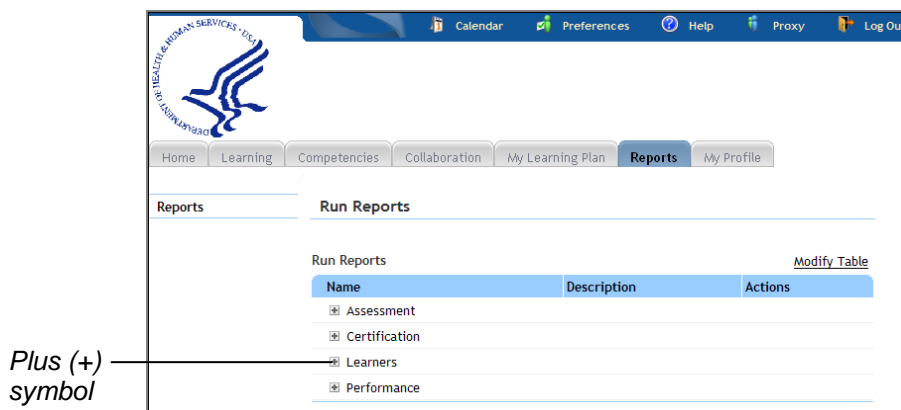


Figure 2: Reports tab

- Click the **Plus (+)** symbol to the left of **Learners** report category.

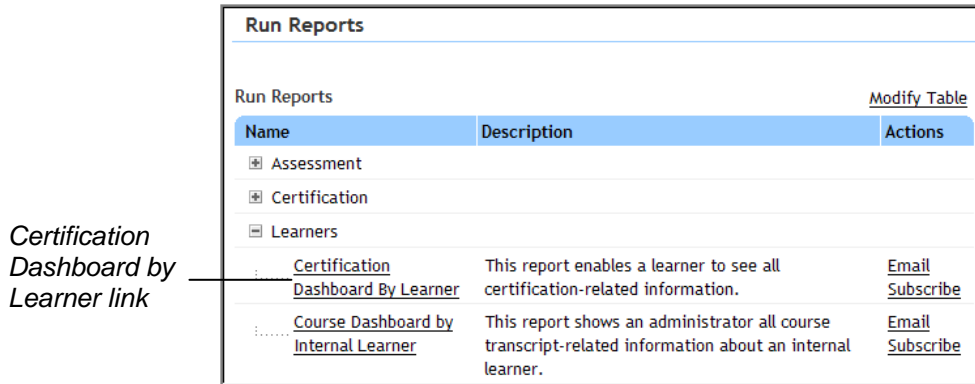


Figure 3: Report categories area on Reports tab

- Click the **Certification Dashboard by Learner** link.

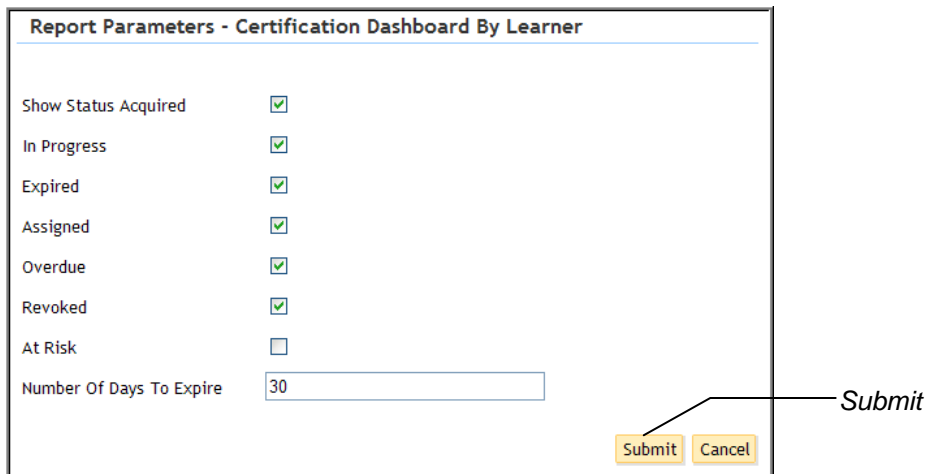


Figure 4: Report Parameters screen

- Select a checkbox for each of the certification status types you wish to display.
- Enter a value in the **Number of Days to Expire** field.

IMPORTANT! By default, the report displays only certifications that expire within the next 30 days. To view all of your certifications and their statuses, regardless of expiration date, remove the value from the **Number Of Days To Expire** field.

7. Click **Submit** to generate the Certification Dashboard By Learner report.

Certification Dashboard By Learner

on saba.

Learner Details

Learner Name	Learner, NIH (NIHLEARNER)		
Work Phone	301-496-6211	Email	lmsupport@mail.nih.gov

Certification Title	Status	Assigned On	Acquired On	Target Date	Expires On	Valid For	Recertification
NIH Diversity Management Training - NIDDK #Ver: 1.0	Acquired	6/8/2010	6/17/2010	6/17/2011	6/17/2011	365	Yes
NIH EEO Laws & Regulations Certification - NIDDK #Ver: 1.0	Acquired	6/8/2010	6/17/2010	6/17/2011	6/17/2011	365	Yes
NIH Environmental Management System (NEMS) Awareness Training Certification #Ver: 1.0	Acquired	10/13/2010	9/29/2010	9/29/2011	9/29/2011	365	Yes
NIH Information Security Awareness Course Certification OBSOLETE #Ver: 1.0	Acquired	8/19/2010	4/2/2009				No
NIH NoFEAR Act Training Certification #Ver: 1.0	Acquired	7/2/2010	10/10/2010	10/9/2012	10/9/2012	730	Yes
NIH Prevention of Sexual Harassment Training Certification #Ver: 1.0	Acquired	10/13/2010	4/15/2010	4/14/2012	4/14/2012	730	Yes

Copyright © 1997-2008, Saba Software Inc. All Rights Reserved. Print Date: 10/18/2010 Page Number: 1

Figure 5: Certification Dashboard by Learner report

8. To print this report, click the **Printer Icon** at the top left corner of the report.

Printer Icon

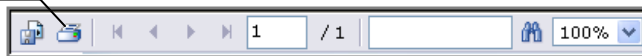
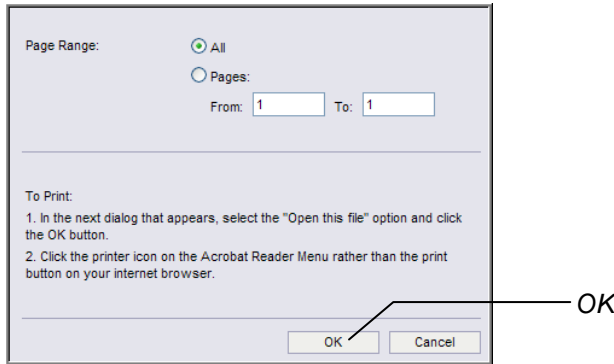


Figure 6: Report Menu bar

NOTE: Do not use the Print button on your browser. The report will not be formatted properly if you use the web browser print function



9. Click **OK** in the window that pops up.

NOTE: Depending on your web browser settings, you may see a message like the following:

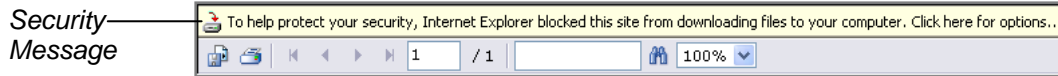


Figure 7: Report Menu bar with security message

If you receive this message, click the yellow bar and select **Download File** from the menu that appears.

Repeat steps 8 and 9 to print the report.

IF YOU EXPERIENCE TROUBLE WITH THIS PROCESS, PLEASE CONTACT THE HELPDESK FOR SUPPORT AT LMSSUPPORT@MAIL.NIH.GOV OR 1-866-246-5440.