



**DEPARTMENT OF THE AIR FORCE  
HEADQUARTERS 11TH WING (AFDW)  
JOINT BASE ANDREWS, MARYLAND 20762**

17 December 2012

The United States Air Force Band - Airmen of Note - Washington D.C.

**Lead Trombone Audition**

**Musical Requirements**--The lead trombone position in the Airmen of Note requires a musician who demonstrates the highest level of proficiency both as a lead player and as a soloist performing in multiple styles, such as: Swing, Bebop, Latin (straight 8th) and Funk/Rock. Additionally, a strong melodic concept and ability to perform lyrically in the Tommy Dorsey/Glenn Miller/Duke Ellington, and similar Big Band Era styles, as well as modern big band styles is expected.

**Audition Process**--Preliminary audition recordings and resumes are requested by **January 18, 2013**. Applicants who are considered musically qualified will be contacted by The USAF Band auditions team and then by an Air Force recruiter to assess each applicant's eligibility to enlist in the Air Force. Once approved by the recruiter, applicants will receive an audition invitation letter. All invited candidates must be prepared to meet Air Force maximum allowable weight standards.

All live audition rounds will be held February 26-28, 2013, at Joint Base Anacostia-Bolling, Washington, D.C. For more information call 1-800-283-8995 or email [usafbandaudition@afncr.af.mil](mailto:usafbandaudition@afncr.af.mil)

**Preliminary Recording**--Please provide a CD or MP3s (with audible metronome on #'s 3 & 4) containing the following recorded examples:

1. Two choruses of improvisation on Groovin' High at 180 bpm (Aebersold Vol 43)
2. Two choruses of improvisation on Cherokee at 250 bpm (Aebersold Vol 15, "Share A Key")
3. Example of Big Band Era style playing, both melody and improvisation
  - Required excerpt: **Getting Sentimental Over You**, 98bpm, key of 'D', in the Tommy Dorsey/sweet style (see pg. 2)
4. Example of lead trombone playing; include recording with a big band (if possible)
  - Required excerpts: **The Snake Was On His Way To A Gig!** - Letter C to Letter F, 232bpm (see pg. 3)
  - **Goombay Smash**
  - An additional 2-3 recorded examples playing lead in a big band.

**\*\*Please note: We will also accept video clips, such as YouTube, in addition to or in lieu of CDs/MP3s\*\***

**Recording/Resume Submission Deadline**--The audition materials are requested by **January 18, 2013**.

Send MP3s and/or video clips, or links to the clips and resume to: [AirmenofNoteAudition@gmail.com](mailto:AirmenofNoteAudition@gmail.com)

OR mail CD to:

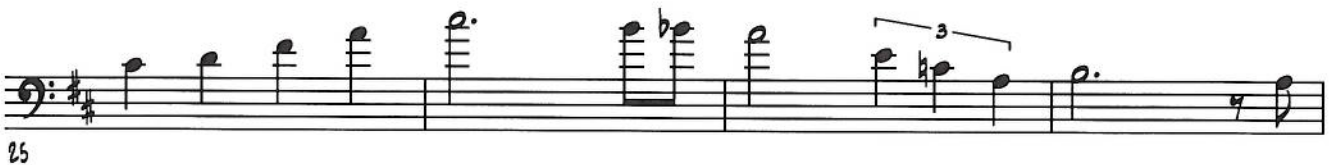
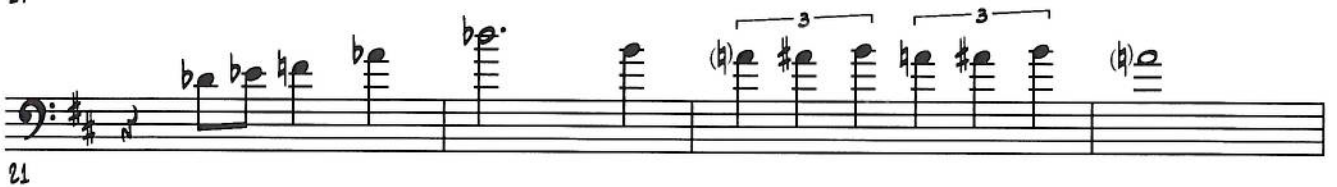
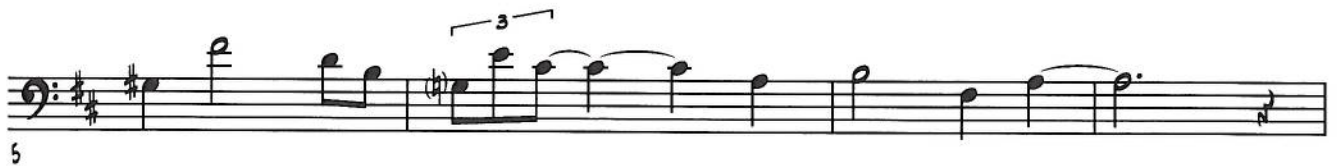
ATTN: Auditions – Airmen of Note Lead Trombone  
The USAF Band  
201 McChord St  
Joint Base Anacostia-Bolling, DC 20032-0202

Please note: Due to anticipated issues with mailing parcels to military installations we recommend you email MP3s and/or video clips, or links to the clips and your resume to the "Gmail" account. If you do mail a CD please send a follow-up email with the date the CD was mailed and its expected arrival date to: [usafbandaudition@afncr.af.mil](mailto:usafbandaudition@afncr.af.mil) and to [AirmenofNoteAudition@gmail.com](mailto:AirmenofNoteAudition@gmail.com)

***Vigilance - Precision - Global Impact***

# I'M GETTIN' SENTIMENTAL OVER YOU

♩ = 98



Bone 1

# The Snake Was On His Way To A Gig!

$\text{♩} = 232$

Arranged By: Tom Kubis

**C**

4 *f*

This system contains the first four measures of the piece. It begins with a 4-measure rest, followed by a series of eighth notes. The first measure is marked with a forte (*f*) dynamic. The key signature has one flat (B-flat). The notation includes various articulations such as accents and slurs.

3

This system contains measures 5 through 8. It features a triplet of eighth notes in measure 7. A dynamic hairpin is used to indicate a crescendo and then a decrescendo across the system.

This system contains measures 9 through 12. It continues the eighth-note pattern with various articulations and slurs.

3

This system contains measures 13 through 16. It includes a triplet of eighth notes in measure 14 and a dynamic hairpin.

**D**

This system contains measures 17 through 20. It begins with a whole rest in measure 17, followed by eighth notes. The key signature changes to two flats (B-flat and E-flat).

This system contains measures 21 through 24. It continues the eighth-note pattern with various articulations and slurs.

**E**

Two staves of musical notation in bass clef. The first staff contains a long melodic line with a slur over the first four measures and accents on the notes. The second staff continues the melodic line with slurs and accents.

**8x's BG 2,4,6,8 F**

Two staves of musical notation in bass clef. The first staff begins with a double bar line and the number '16' above it, followed by a dynamic marking of *f*. The second staff continues the piece with various dynamics including *f* and *ff*.

**G**

Two staves of musical notation in bass clef. The first staff starts with a wavy line and a dynamic marking of *p*, followed by a *ff* dynamic. The second staff continues with various dynamics including *p* and *ff*.

# 1293

TROMBONE I

Comp. & Arr. By  
STEVE OWEN

## THE GOOMBAY SMASH

Musical score for Trombone I, featuring handwritten annotations and performance instructions. The score is written on ten staves. Key annotations include:

- Tempo:  $\text{♩} = 116 - 120$
- Section marker: **2ND X ONLY**
- Measure numbers: 9, 17, 25, 41
- Dynamic markings: *mf*, *f*
- Performance instruction: **SOLI**
- Accents:  $\wedge$
- Articulation:  $\text{v}$
- Rehearsal marks:  $\text{X}$

TRON I Pt 2

2. Musical staff with notes and a 'Bva...' annotation.

61 Musical staff with notes and a 'SOLO' annotation.

Musical staff with notes.

69 Musical staff with notes and a '77' annotation.

Musical staff with notes.

86 Musical staff with notes.

Musical staff with notes and a 'SOLO BREAK E7(alt.)' annotation.

97 Musical staff with notes and chord annotations: Ami?, F#mi?(bs), Fmi?, Dmi?(bs), G7(+9).

f 1ST X ONLY

Musical staff with notes and chord annotations: Ami?, F#mi?(bs), Fmi?, Dmi?(bs), G7(+9).

105 Musical staff with notes and chord annotations: Ami?, F#mi?(bs), Fmi?, Dmi?(bs), G7(+9).