

18th Security Forces Squadron

Synthetic Marijuana Training For Professionals



**Security Forces
Office of Investigations**



Overview

- **What is Synthetic Marijuana**
- **Effects of Synthetic Marijuana**
- **Be On Alert**
- **Synthetic Marijuana In the News**
- **Dispelled Myths**



What is Synthetic Marijuana?

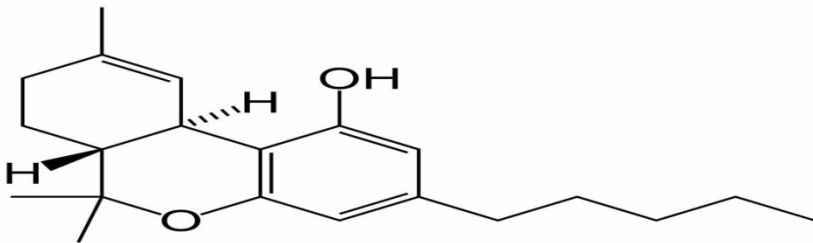
- Street names are Spice/K2, legal marijuana, the weed of Okinawa
- Mixture of herbs/spices sprayed with a synthetic compound similar to THC
- Marketed as an aromatic incense
- Appearance is similar to dried leaves or potpourri
- Commonly purchased in “head” shops, tobacco shops & on the internet
- Cost \$80 – \$200 USD for 3 grams or \$20 for a pre-rolled blunt
- Typically smoked in joints, blunts, pipes or bongs
- Advertised as an herbal incense and not for human consumption



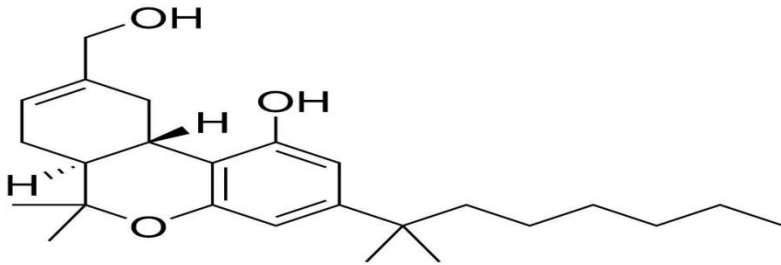


What is Synthetic Marijuana cont.

Chemical difference (THC – HU 210)



THC Chemical Structure



HU 210 Chemical Structure





Effects of Synthetic Marijuana

- **Affects on the mind:** Psychological effects are similar to those of marijuana and include paranoia and giddiness.
- **Other symptoms:**
 - Panic attacks
 - Hallucinations
 - Delusions
 - Increased agitation
- **Affects on the body:** Physiological effects include increased heart rate and increase of blood pressure.
- **Other Symptoms:**
 - Vomiting
 - Red eyes
 - Dilated pupils
 - Headaches
 - Dehydration
 - Numbness



Effects Of Synthetic Marijuana

cont.

- It appears to be stored in the body for a long time, therefore, long-term effects are not yet known.
- **Strength:** Synthetic Marijuana is unregulated and can be anywhere from 10-400 times stronger than street grade marijuana.
- **Length:** Onset 20-60 seconds; Coming Up 1-2 minutes; Plateau 30 minutes to four hours!
- **Death:** There have been reported deaths associated with synthetic marijuana use.





Be On Alert

- Spice
- Neo-Gold
- Samurai King
- Shangri-La Spice
- Dragon Spice
- Ambient Spice
- Mystic
- Scorpion Spice
- Arctic Synergy
- Tiger Spice





Be On Alert cont.





Be On Alert cont.

- **Mar 11, DEA issued a temporary order which made five variations of synthetic marijuana a Schedule I substances, the most tightly controlled category in the Controlled Substances Act.**
- **Jun 10, AFI 44-121 revised which included Spice as a mind-altering drug.**
- **18 Feb 10, COMPACAF signed General Order, prohibiting intoxicating substances.**
- **Nov 09, Japanese outlawed the importation and distribution of synthetic marijuana.**
- **13 Mar 09, 18 WG/CC signed General Order #3, prohibiting the use of synthetic marijuana.**

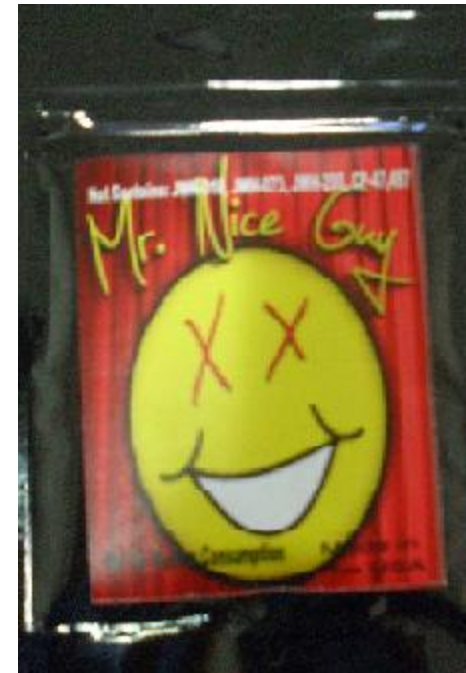


A Dangerous Increase

■ Table 1. “Spice”-Related Calls Reported to U.S. Poison Control Centers

Year Number of Calls

■ 2009	14
■ 2010	2,906
■ 2011	6,959
■ 2012*	639



- Source: American Association of Poison Control Centers, data run by AAPCC on May 12, 2011. *Data reflects calls received and reported in January 2012.



Synthetic Marijuana In the News

**“DEA Announces Emergency Spice Ban,
Effective Immediately” - Phoenix News Times**



**“A Lafayette man is in the hospital
suffering from paralysis after smoking
the popular new drug known as Spice”
– Fox News 59**

**“A mother of two is dead after using a synthetic-
marijuana laced incense known as Spice” – Indiana News 4**



Dispelled Myths

- **MYTH 1: Synthetic Marijuana is legal in all states. I can use it without consequence.**
 - **FACT: The military has banned its use and prosecuted many service members.**
 - **FACT: Multiple states have outlawed synthetic marijuana.**
 - **FACT: The DEA has taken action to make ingredients in synthetic marijuana a Schedule I controlled substance**
- **MYTH 2: Synthetic Marijuana is fake weed. It is not a drug.**
 - **FACT: AFI 44-121 defines a drug as any intoxicating substance, other than alcohol...ingested to alter mood or function.**



Dispelled Myths cont.

- **MYTH 3: The AF cannot test for synthetic marijuana, so there is no risk.**
 - **FACT: As of 22 Feb 2011, the military began testing to detect synthetic marijuana.**
- **MYTH 4: Synthetic marijuana gives a natural high without causing physical ailments.**
 - **FACT: Use of synthetic marijuana has numerous negative/harmful physical side affects and long term effects are not yet known.**



Spice Sanctions and Statistics

■ Use

- 100 hours of Community Service
- Mandatory Adolescent Substance Abuse Counseling
- 8 pm curfew (3-6 months)
- No Contact Order with contributing parties/friends
- 1,000-word hand-written essay on effects of spice use
- Recommend suspended barmment to Wing Commander

■ Distribution (payment changes hands)

- Recommend barmment to Wing Commander

CY2011		2012 (1 Jan through 31 May)	
Total Spice Cases:	29	Total Spice Cases: (98% inc)	24
Juveniles (Middle-High School):	22	Juveniles (Middle-High School):	19
Barmments:	9	Barmments: (87% inc)	7



Summary

- **What is Synthetic Marijuana? Is a mixture of herbs/spices sprayed with synthetic compound similar to THC.**
 - **Effects of Spice include but are not limited to loss of motor skills, red eyes, dehydration, panic attacks, and giddiness, as well as increased heart rate and increase in blood pressure.**
 - **Be On Alert – Synthetic Marijuana is sold in many places and is known by many names such as Samurai King, Neo-Gold, Shangri-La, Ambient, etc.**
 - **Synthetic Marijuana In the News**
 - **Dispelled Myths**
 - **Parents/teachers: the FIRST line of defense**
 - **Symptoms/signs to look for**
 - **Substance abuse programs ARE available**
-



Questions?

