



GRANT GUIDANCE DECISION CHARTS

SAFECOM has developed coordinated grant guidance criteria to help maximize the efficiency and effectiveness with which emergency response communications related grant dollars are allocated and spent. This criteria specifies that all new digital voice systems should be compatible with the Project 25 (P25) suite of standards.

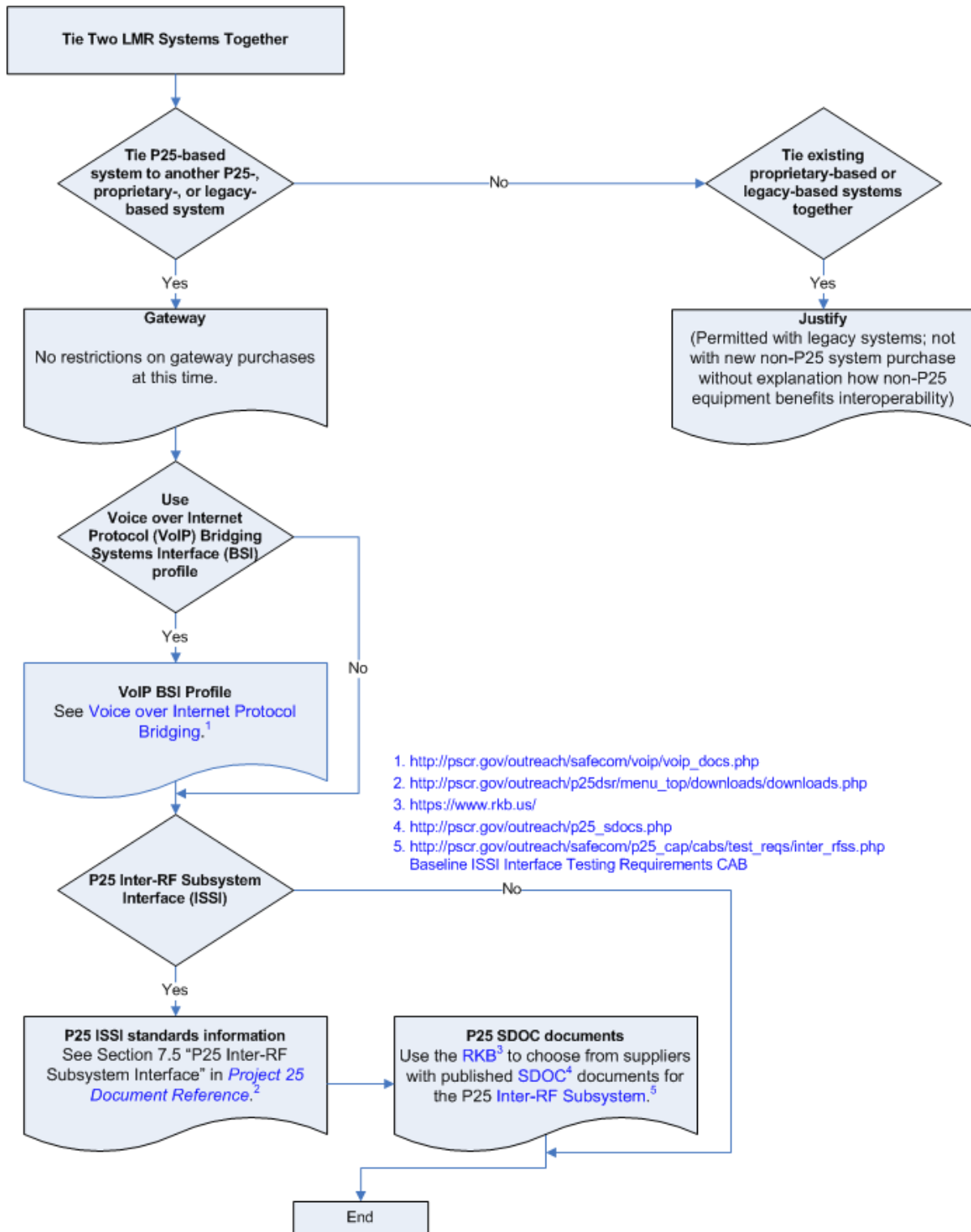
This brief guide provides help navigating the documents that identify criteria for what land mobile radio (LMR) equipment you can purchase under Federal grant guidance for public safety emergency response communications.

Use the following charts to find P25 CAP (Compliance Assessment Program) SDoC (Supplier's Declaration of Compliance) documents or P25 standards documents relevant to your LMR build plans:

- [Tie Two LMR Systems Together](#)—using portable or fixed gateways or bridging systems
- [Build Out an Existing LMR System](#)—infrastructure (repeaters) and subscriber units
- [Purchase a New LMR System](#)—analog or digital, conventional or trunked



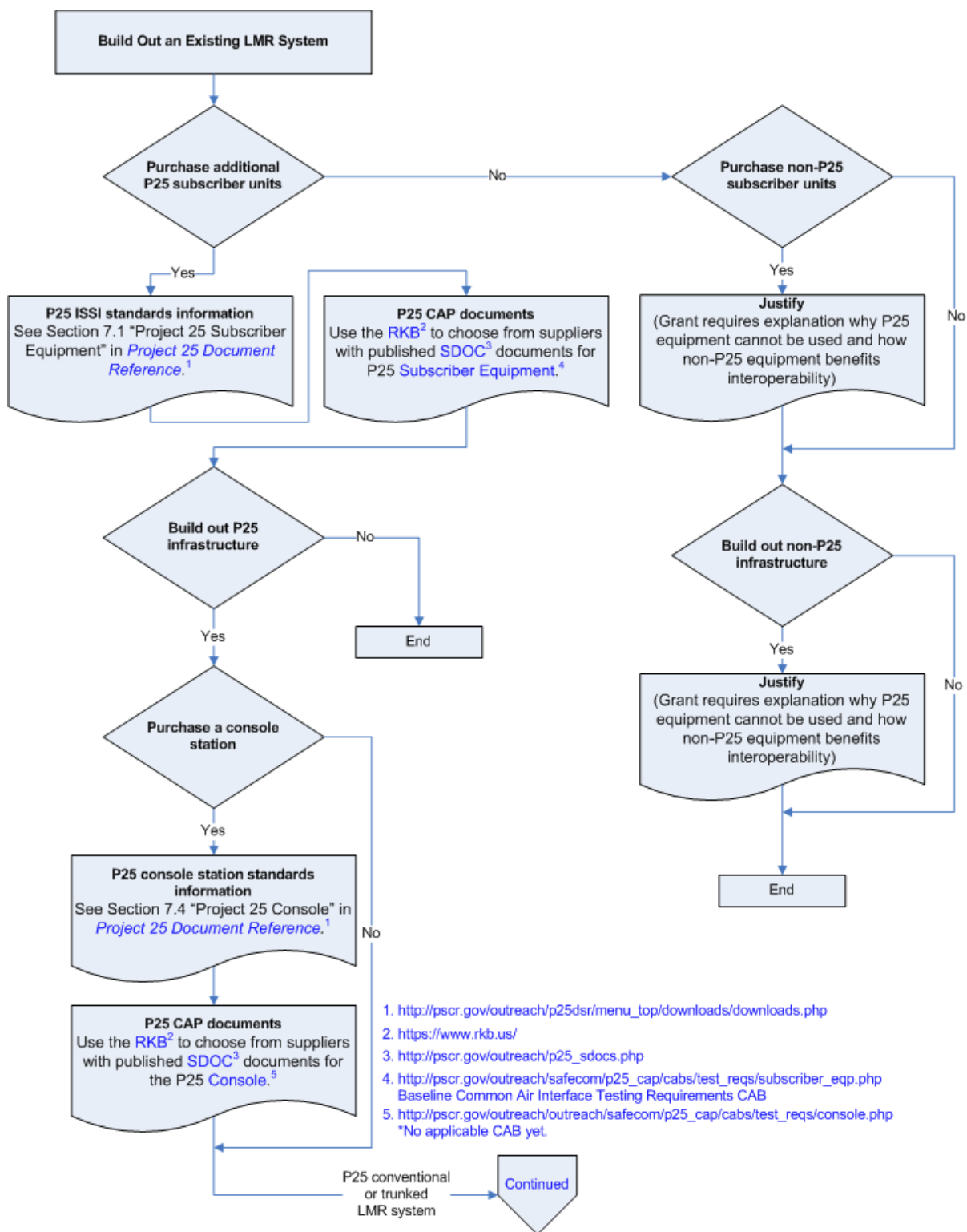
Tie Two LMR Systems Together



- 1. http://pscr.gov/outreach/safecom/voip/voip_docs.php
- 2. http://pscr.gov/outreach/p25dsr/menu_top/downloads/downloads.php
- 3. <https://www.rkb.us/>
- 4. http://pscr.gov/outreach/p25_sdocs.php
- 5. http://pscr.gov/outreach/safecom/p25_cap/cabs/test_reqs/inter_rfss.php
Baseline ISSI Interface Testing Requirements CAB



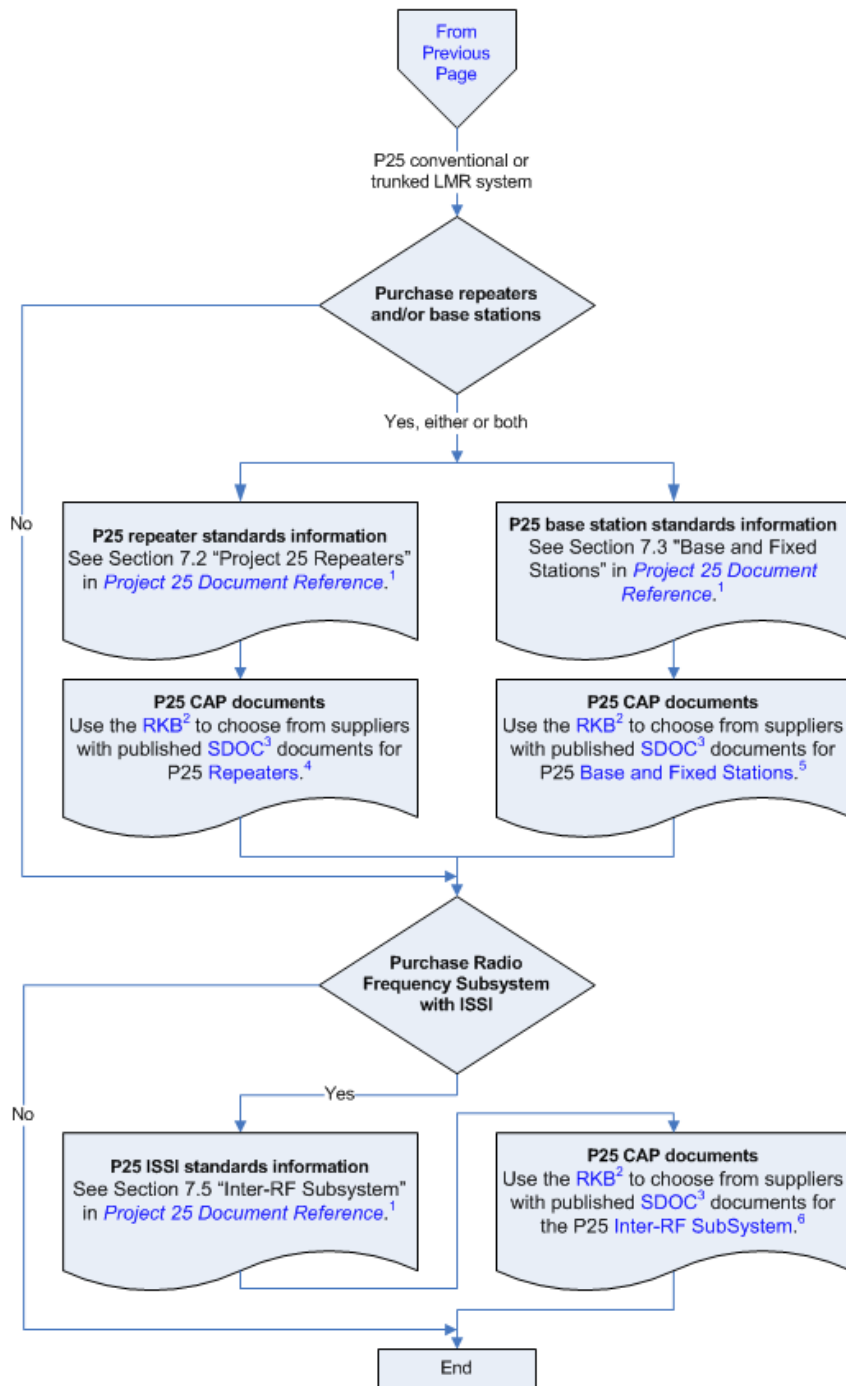
Build Out an Existing LMR System



1. http://pscr.gov/outreach/p25dsr/menu_top/downloads/downloads.php
 2. <https://www.rkb.us/>
 3. http://pscr.gov/outreach/p25_sdocs.php
 4. http://pscr.gov/outreach/safecom/p25_cap/cabs/test_reqs/subscriber_eqp.php
 Baseline Common Air Interface Testing Requirements CAB
 5. http://pscr.gov/outreach/outreach/safecom/p25_cap/cabs/test_reqs/console.php
 *No applicable CAB yet.



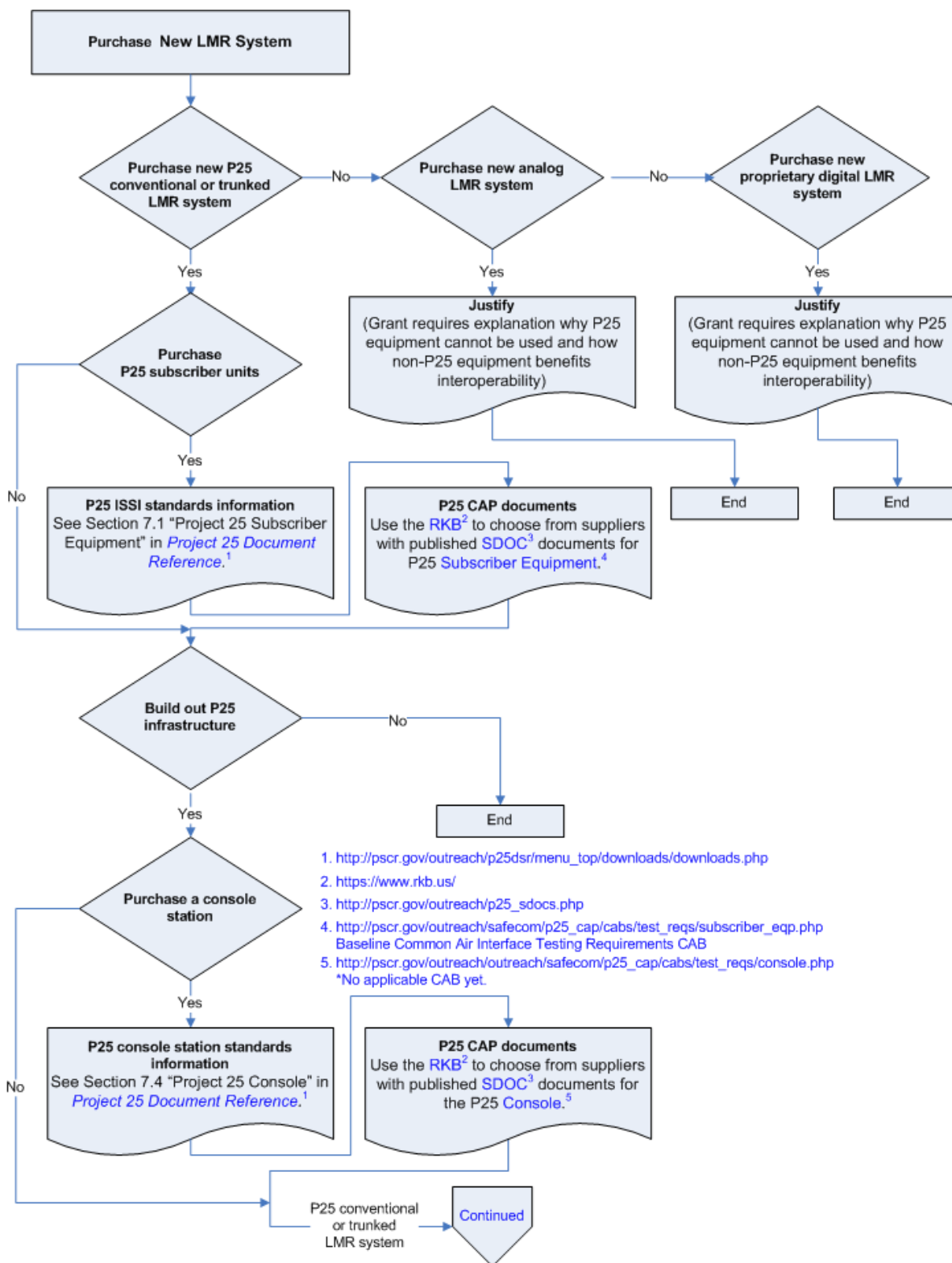
Build Out an Existing LMR System (continued)



1. http://pscr.gov/outreach/p25dsr/menu_top/downloads/downloads.php
2. <https://www.rkb.us/>
3. http://pscr.gov/outreach/p25_sdocs.php
4. http://pscr.gov/outreach/safecom/p25_cap/cabs/test_reqs/repeaters.php – Baseline Common Air Interface Testing Requirements CAB
5. http://pscr.gov/outreach/safecom/p25_cap/cabs/test_reqs/base_fixed_stations.php – Baseline Common Air Interface Testing Requirements CAB
6. http://pscr.gov/outreach/outreach/safecom/p25_cap/cabs/test_reqs/inter_rfss.php – Baseline ISSI Testing Requirements CAB



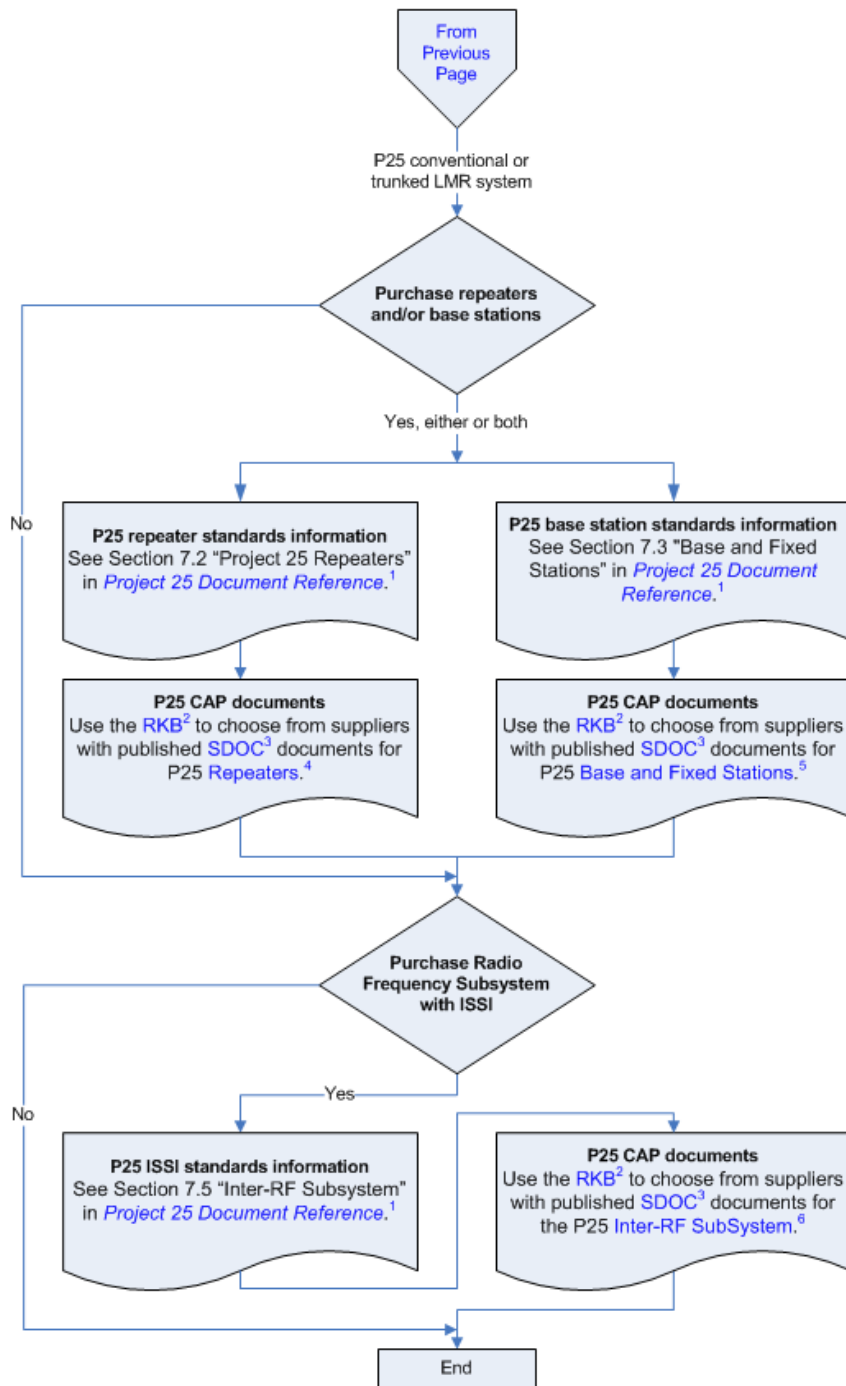
Purchase a New LMR System



- 1. http://pscr.gov/outreach/p25dsr/menu_top/downloads/downloads.php
- 2. <https://www.rkb.us/>
- 3. http://pscr.gov/outreach/p25_sdocs.php
- 4. http://pscr.gov/outreach/safecom/p25_cap/cabs/test_reqs/subscriber_eqp.php
Baseline Common Air Interface Testing Requirements CAB
- 5. http://pscr.gov/outreach/outreach/safecom/p25_cap/cabs/test_reqs/console.php
*No applicable CAB yet.



Purchase a New LMR System (continued)



1. http://pscr.gov/outreach/p25dsr/menu_top/downloads/downloads.php
2. <https://www.rkb.us/>
3. http://pscr.gov/outreach/p25_sdocs.php
4. http://pscr.gov/outreach/safecom/p25_cap/cabs/test_reqs/repeaters.php – Baseline Common Air Interface Testing Requirements CAB
5. http://pscr.gov/outreach/safecom/p25_cap/cabs/test_reqs/base_fixed_stations.php – Baseline Common Air Interface Testing Requirements CAB
6. http://pscr.gov/outreach/outreach/safecom/p25_cap/cabs/test_reqs/inter_rfss.php – Baseline ISSI Testing Requirements CAB