

A0006744



MATCH LINE STA. 553 + 50

PHASE I

METABIE RELIEF CANAL
CONTROL VALVES - 3 OF HAMMOND HWY

MATCH LINE STA. 553 + 50

PHASE II

METAIRIE RELIEF CANAL
CONTROL WAIVES - S OF HAMMOND HWY



553+67
510

3.80, 81.7 N

555

SCALE: 1" = 50'

BM-3

Baseline

All Structures & Obstructions to be removed

Proposed to adjust slope of slope

FLOW

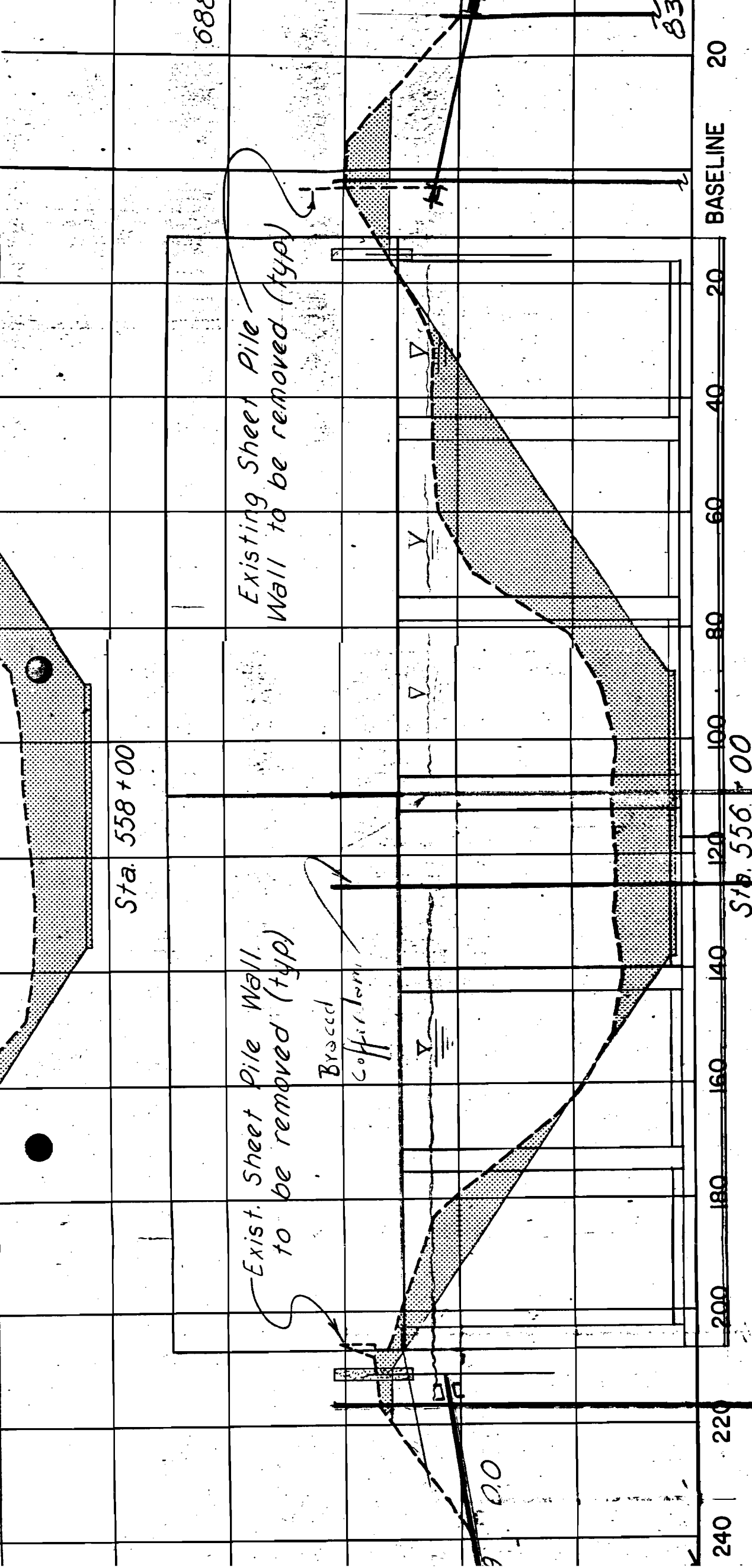


MATCH LINE STA. 553 + 50

METRIE RELIEF CANAL
 CONTROL VALVES - S. OF Hammond Hwy

PLATE III

SCALE 1" = 50'



Sta. 558+00

240 | 220 | 200 | 180 | 160 | 140 | 120 | 100 | 80 | 60 | 40 | 20 | BASELINE

Sta. 556+00

Existing Sheet Pile Wall to be removed (typ)

Exist. Sheet Pile Wall to be removed (typ)

Braced Cofferdam

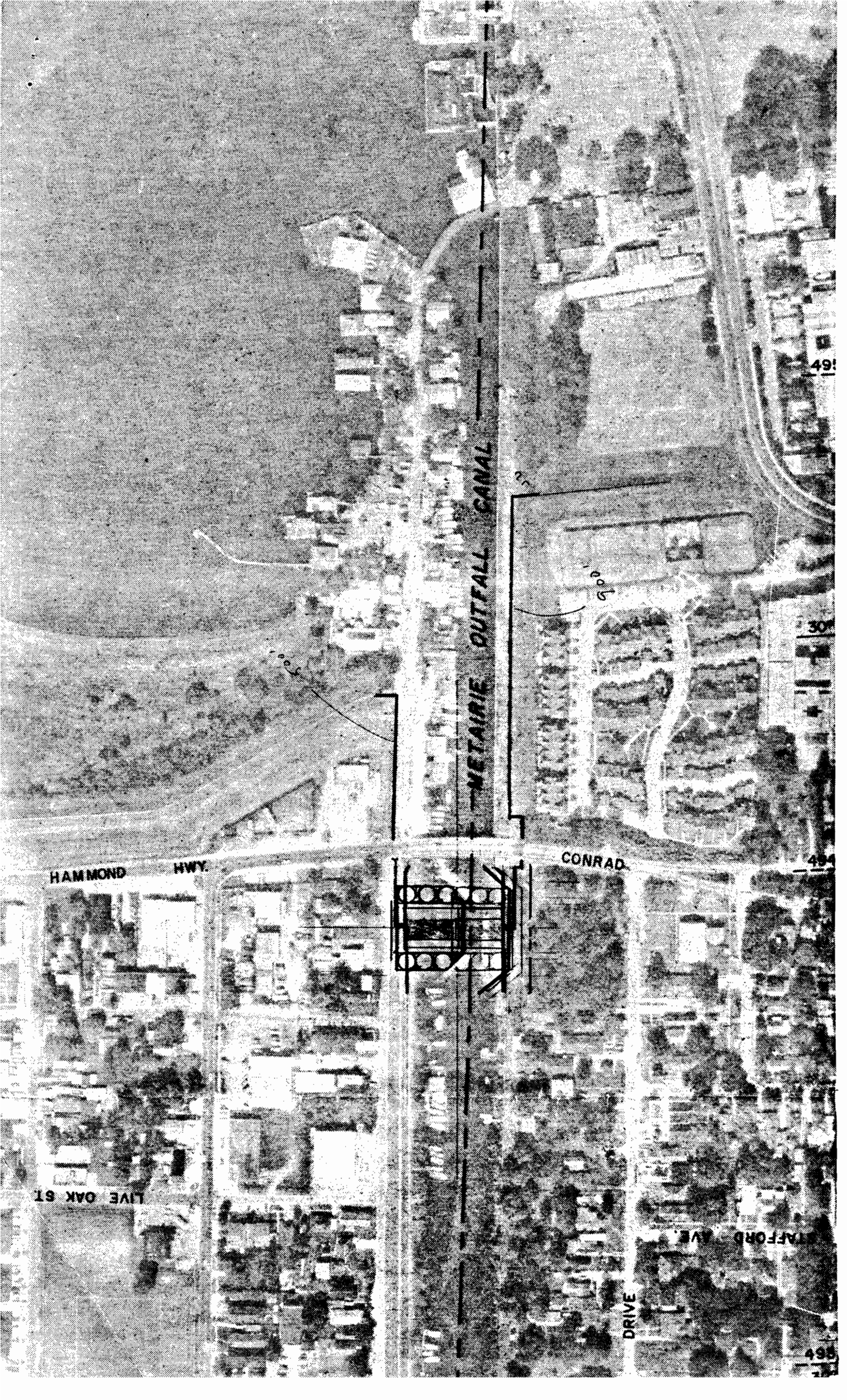
RELIEF CANAL
 Turns - S. of Harmon's Hwy. Pk. II

PHASE I

PREPARED BY: MODJESKI & MASTER

REV.	DATE	DESCRIPTION

END



METAIRIE OUTFALL CANAL

CONRAD

HAMMOND HWY.

LIVE OAK ST

DRIVE

STAFFORD AVE.

491

30

494

495

900

