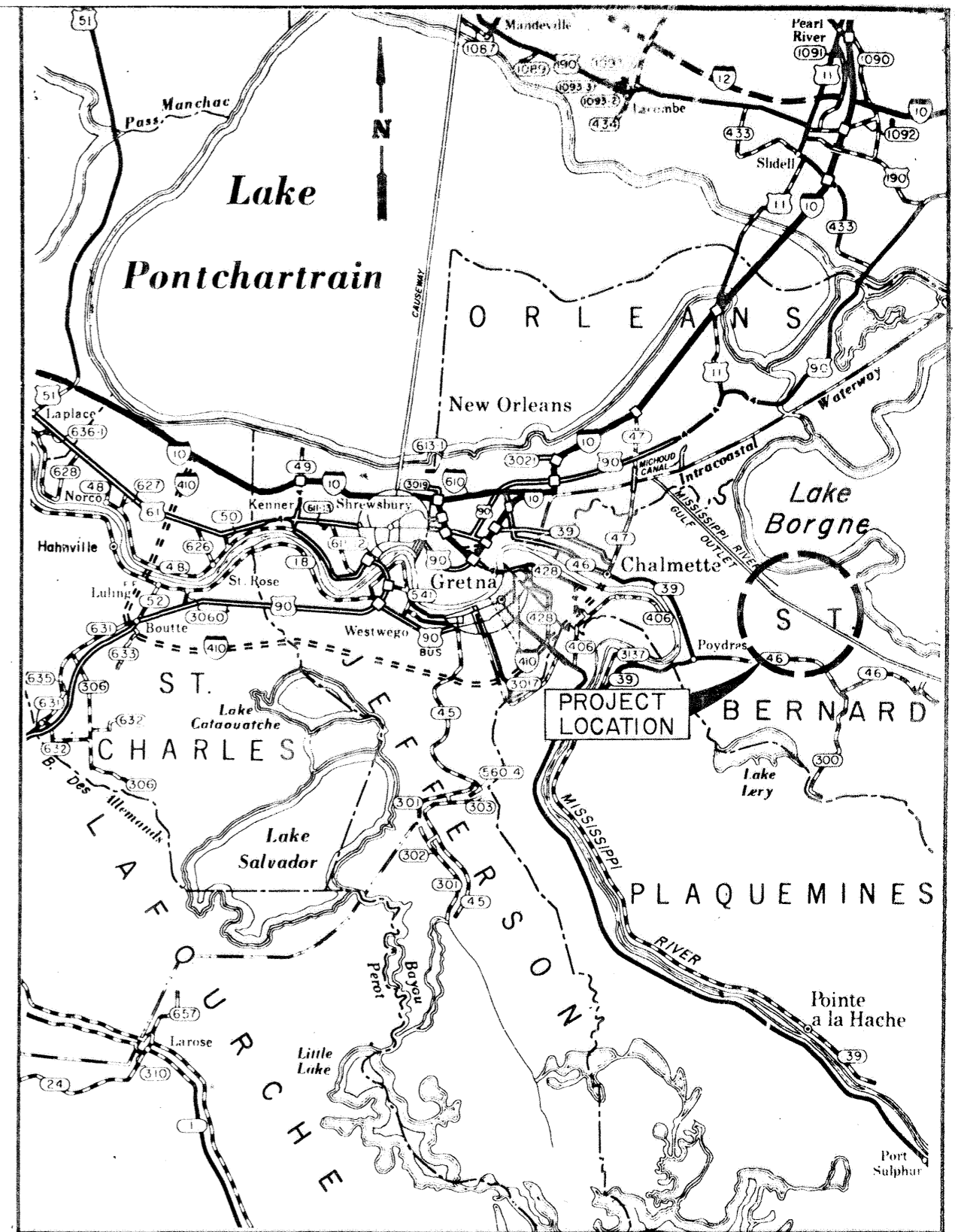


LAKE LERY
LOCATION MAP
SCALE IN MILES



VICINITY MAP

SCALE IN MILES

INDEX TO DRAWINGS	
DWG.	DESCRIPTION
1	LOCATION MAP, VICINITY MAP, & INDEX TO DRAWINGS
2	PLAN AND PROFILE - Sta. 236+19.71 to Sta. 291+19.71
3	PLAN AND PROFILE - Sta. 291+19.71 to Sta. 351+23.06
4	PLAN AND PROFILE - Sta. 351+23.06 to Sta. 408+23.06
5	RETAINING DIKES - VICINITY OF CREOLE & TENNECO PL.
6	TYPICAL DESIGN SECTIONS
7	TYPICAL DESIGN SECTIONS
8	TYPICAL DESIGN SECTIONS
9	PREVIOUS DREDGING IN MR-GO
10	SOIL BORINGS
11	SOIL BORINGS
12	SOIL BORING LEGEND

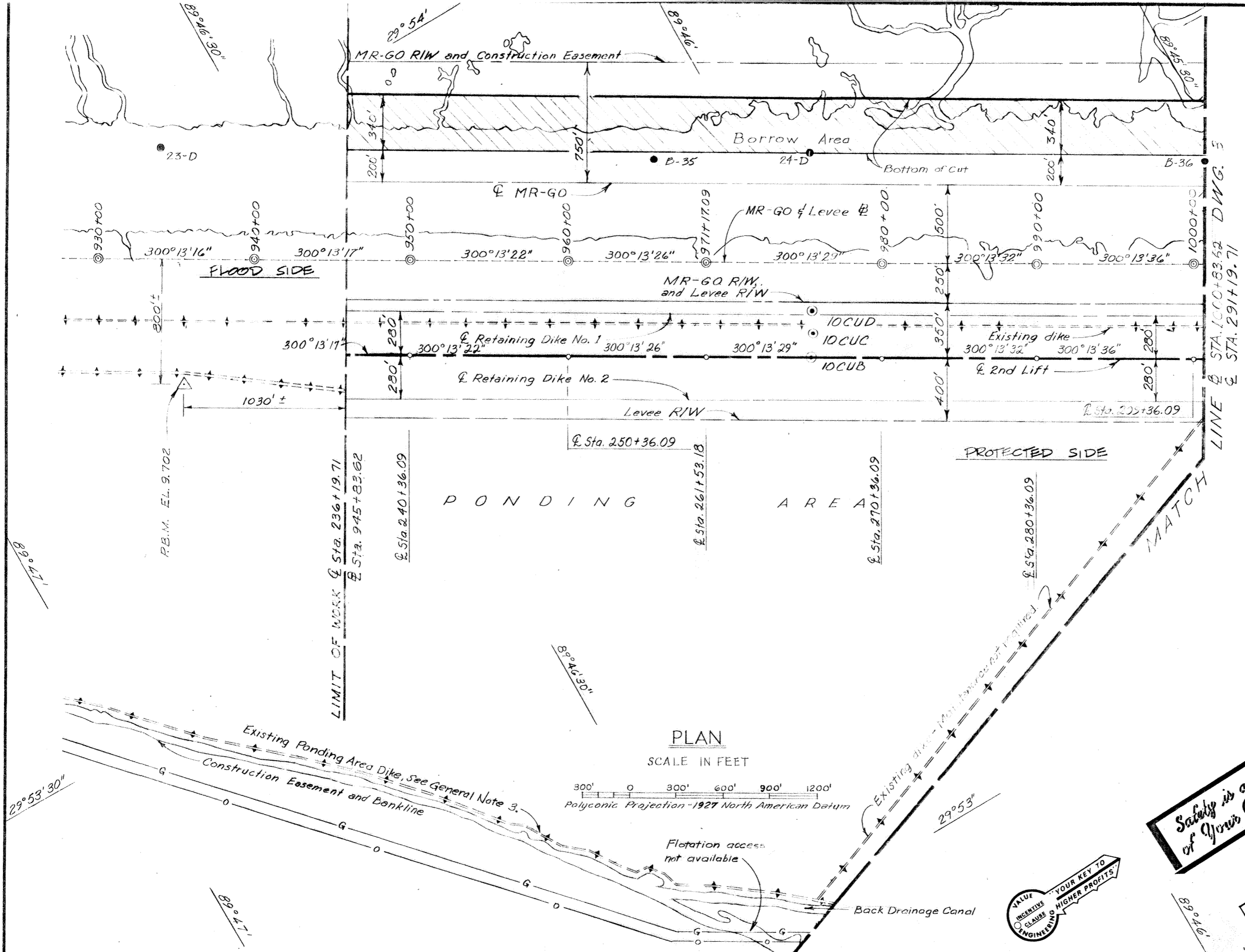
REVISION	DATE	DESCRIPTION	BY

U. S. ARMY ENGINEER DISTRICT, NEW ORLEANS CORPS OF ENGINEERS NEW ORLEANS, LA.			
SUBMITTED <i>Donald C. Long</i>	LAKE PONTCHARTRAIN, LOUISIANA AND VICINITY CHALMETTE AREA PLAN, CHALMETTE EXTENSION HURRICANE PROTECTION LEVEE SECOND LIFT B/L STA. 945+83.62 TO B/L STA. 1117+00 ST. BERNARD PARISH, LA.		
APPROVED <i>John M. Kelly</i>	LOCATION MAP, VICINITY MAP AND INDEX TO DRAWINGS		
DESIGNED L.F.D.	DRAWN C.C.P.	CHECKED R.P.L.	DATE APRIL 1976
SCALE AS SHOWN		FILE NO. H-8-27036	DWG. 1 OF 12
SPEC. NO. DACW29-76-B-0192			

LAKE PONTCHARTRAIN, LOUISIANA AND VICINITY
CHALMETTE AREA PLAN, CHALMETTE EXTENSION
HURRICANE PROTECTION LEVEE
SECOND LIFT

Safety is a Part of Your Contract

NOTE:
DRAWING REDUCED
TO ONE HALF SCALE



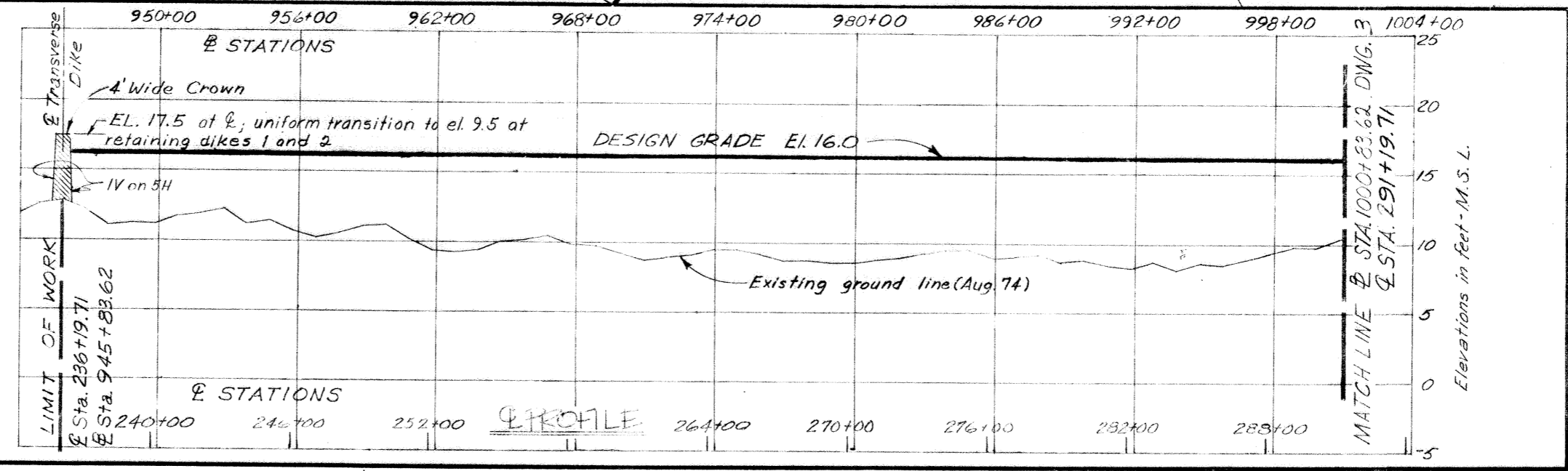
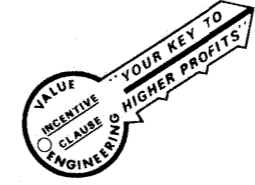
Boring Legend
 • General type boring
 ⊙ Undisturbed boring

General Notes

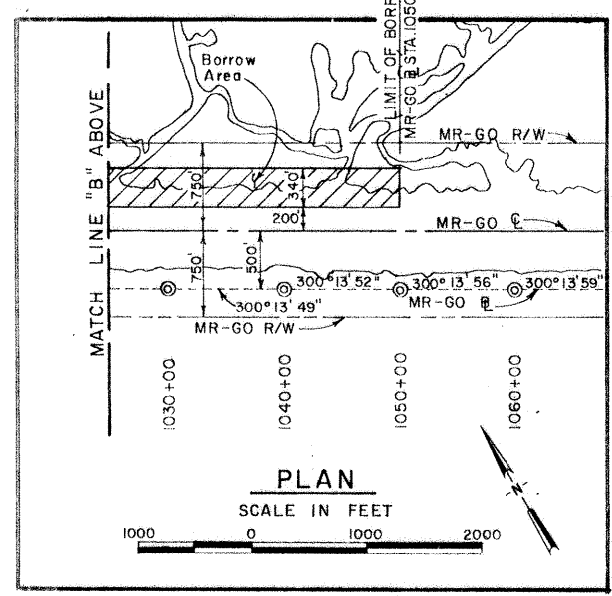
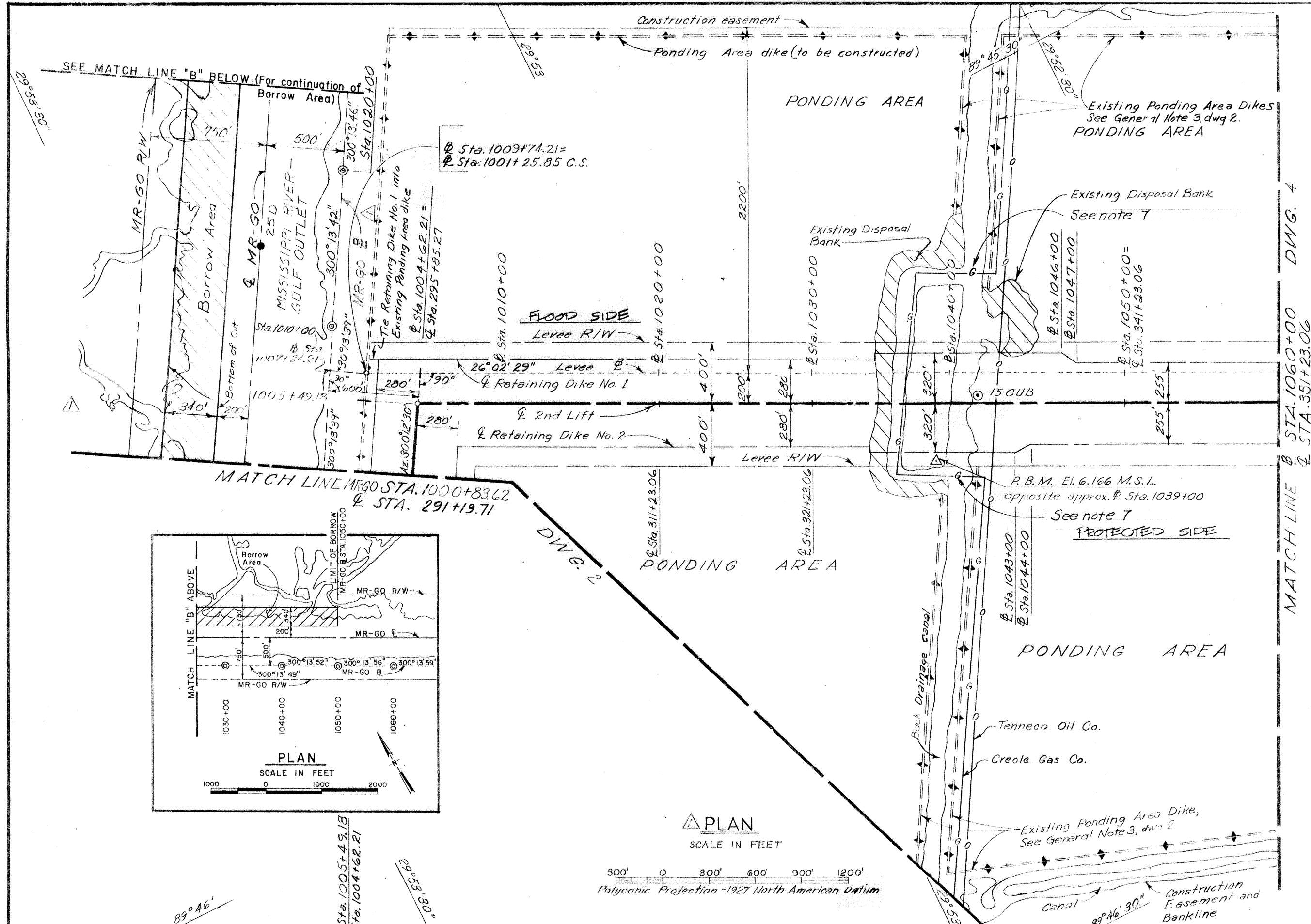
1. Unless otherwise noted all elevations are expressed in feet and refer to Mean Sea Level (M.S.L.)
2. All azimuths are turned in a clockwise direction from 0° (South Point).
3. Existing ponding area dikes to be raised, strengthened, & maintained as necessary to confine the waste water within the limits of the ponding area. Obtain borrow from within the ponding area or within the banklines of the "Back Drainage Canal." Contractor is responsible for the design of these dikes.

Safety is a Part of Your Contract

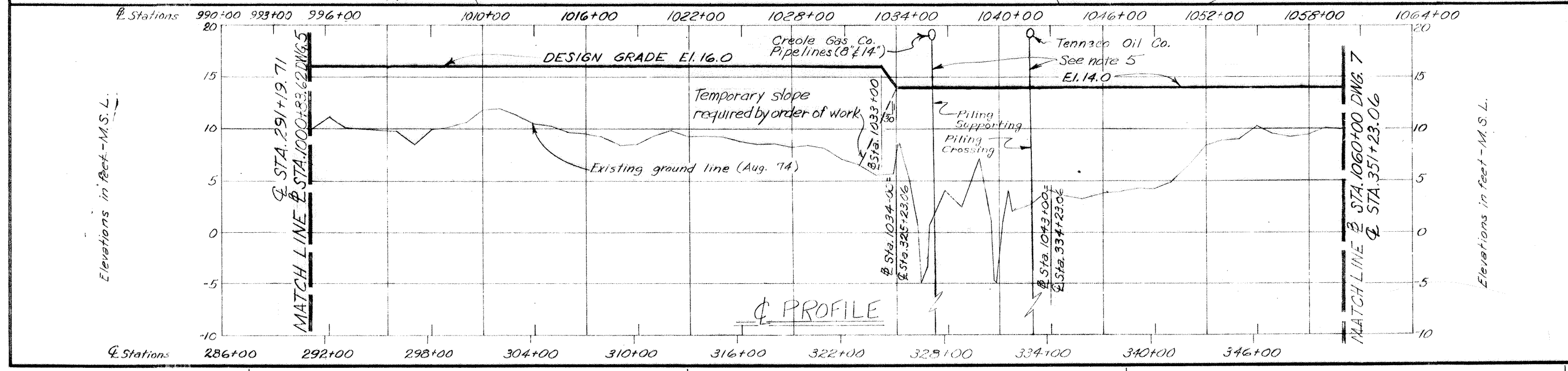
NOTE: DRAWING REDUCED TO ONE HALF SCALE



REVISION	DATE	DESCRIPTION	BY
U. S. ARMY ENGINEER DISTRICT, NEW ORLEANS CORPS OF ENGINEERS NEW ORLEANS, LA. LAKE PONTCHARTRAIN, LOUISIANA AND VICINITY CHALMETTE AREA PLAN, CHALMETTE EXTENSION HURRICANE PROTECTION LEVEE SECOND LIFT B/L STA. 945+83.62 TO B/L STA. 1117+00 ST. BERNARD PARISH, LA. PLAN AND PROFILE ☉ STA. 236+19.71 TO ☉ STA. 291+19.71			
DESIGNED	DRAWN	CHECKED	DATE
L.E.D.	E.H.A.	R.P.C.	APRIL 1976
SUBMITTED	SCALE	FILE NO.	
	AS SHOWN	H-8-27036	
SPEC. NO. DACW29-76-B-0192		Dwg. 2 of 12	



PLAN
SCALE IN FEET
300' 0 600' 900' 1200'

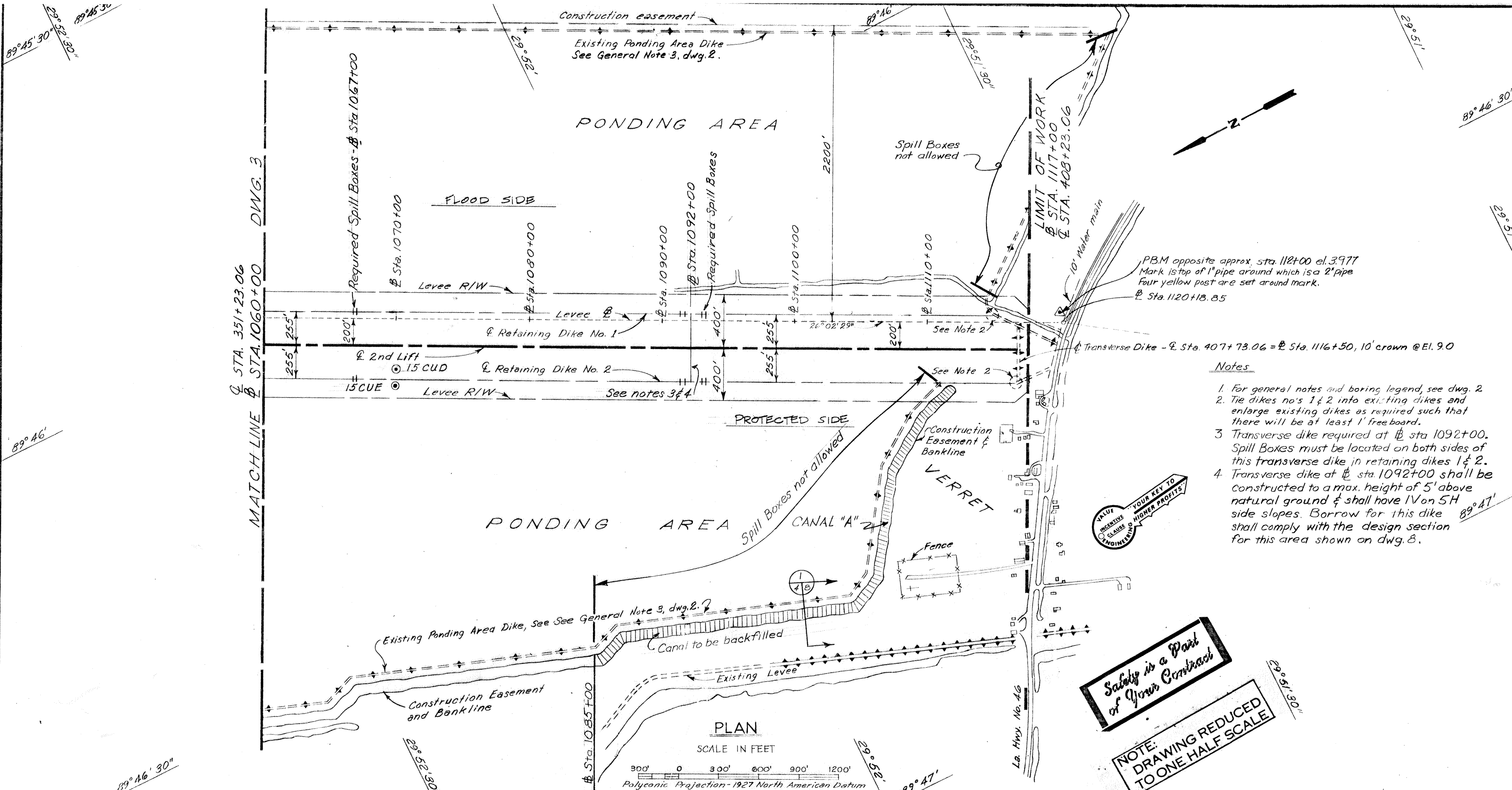


Notes

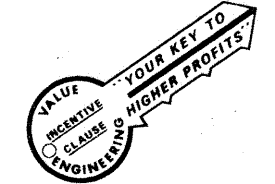
1. For general notes and boring legend, see dwg. 2.
2. The MR-GO borrow area extends to MR-GO @ Sta. 1050+00.
3. RESERVED
4. RESERVED
5. See SP-15 of the specifications for required procedures in working around the pipeline crossings.
6. See dwg. 5 for details of retaining dike nos. 1 and 2 between @ Stations 1033+00 and 1047+00.
7. Borrow within the "Back Drainage Canal" for maintenance of the ponding area dikes must stop at least 50' from the pipelines crossing the canal. Also, no borrow will be permitted between these crossings.

NOTE:
DRAWING REDUCED
TO ONE HALF SCALE

Amendment #1		LEI
REVISION	DATE	DESCRIPTION
U. S. ARMY ENGINEER DISTRICT, NEW ORLEANS CORPS OF ENGINEERS NEW ORLEANS, LA.		
LAKE PONCHARTRAIN, LOUISIANA AND VICINITY CHALMETTE AREA PLAN, CHALMETTE EXTENSION HURRICANE PROTECTION LEVEE SECOND LIFT B/L STA. 945+83.62 TO B/L STA. 1117+00 ST. BERNARD PARISH, LA.		
PLAN AND PROFILE @ STA. 291+19.71 TO @ STA. 351+23.06		
DESIGNED: L.E.D.	DRAWN: E.H.A.	CHECKED: R.P.L.
DATE: APRIL 1976		SCALE: AS SHOWN
SUBMITTED: [Signature]		FILE NO. H-8-27036
SPEC. NO. DACW29-76-B-0192		DWG. 3 OF 12

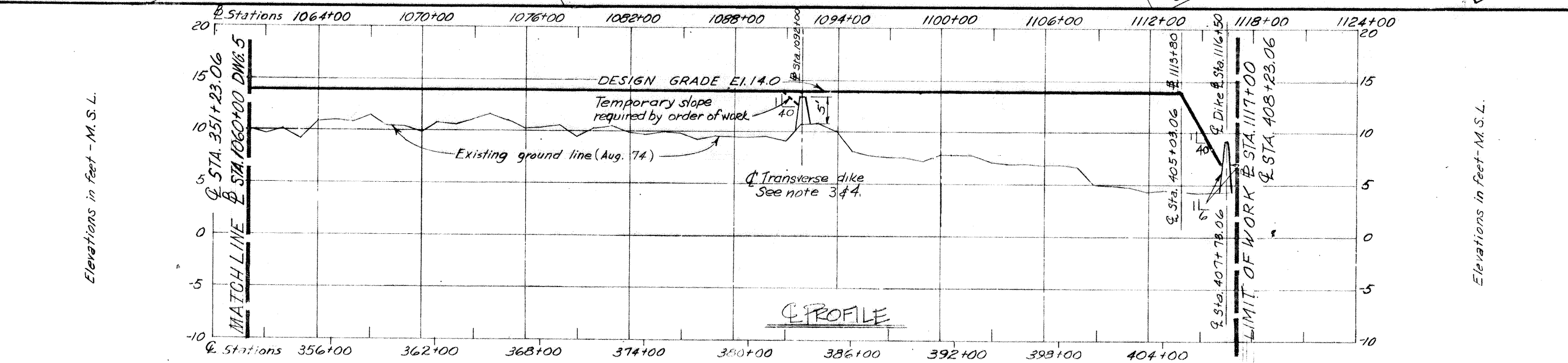
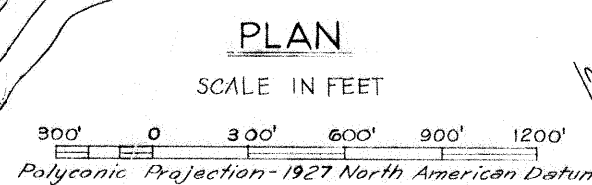


- Notes**
1. For general notes and boring legend, see dwg. 2
 2. Tie dikes no's 1 & 2 into existing dikes and enlarge existing dikes as required such that there will be at least 1' free board.
 3. Transverse dike required at Sta 1092+00. Spill Boxes must be located on both sides of this transverse dike in retaining dikes 1 & 2.
 4. Transverse dike at Sta. 1092+00 shall be constructed to a max. height of 5' above natural ground & shall have 1V on 5H side slopes. Borrow for this dike shall comply with the design section for this area shown on dwg. 8.

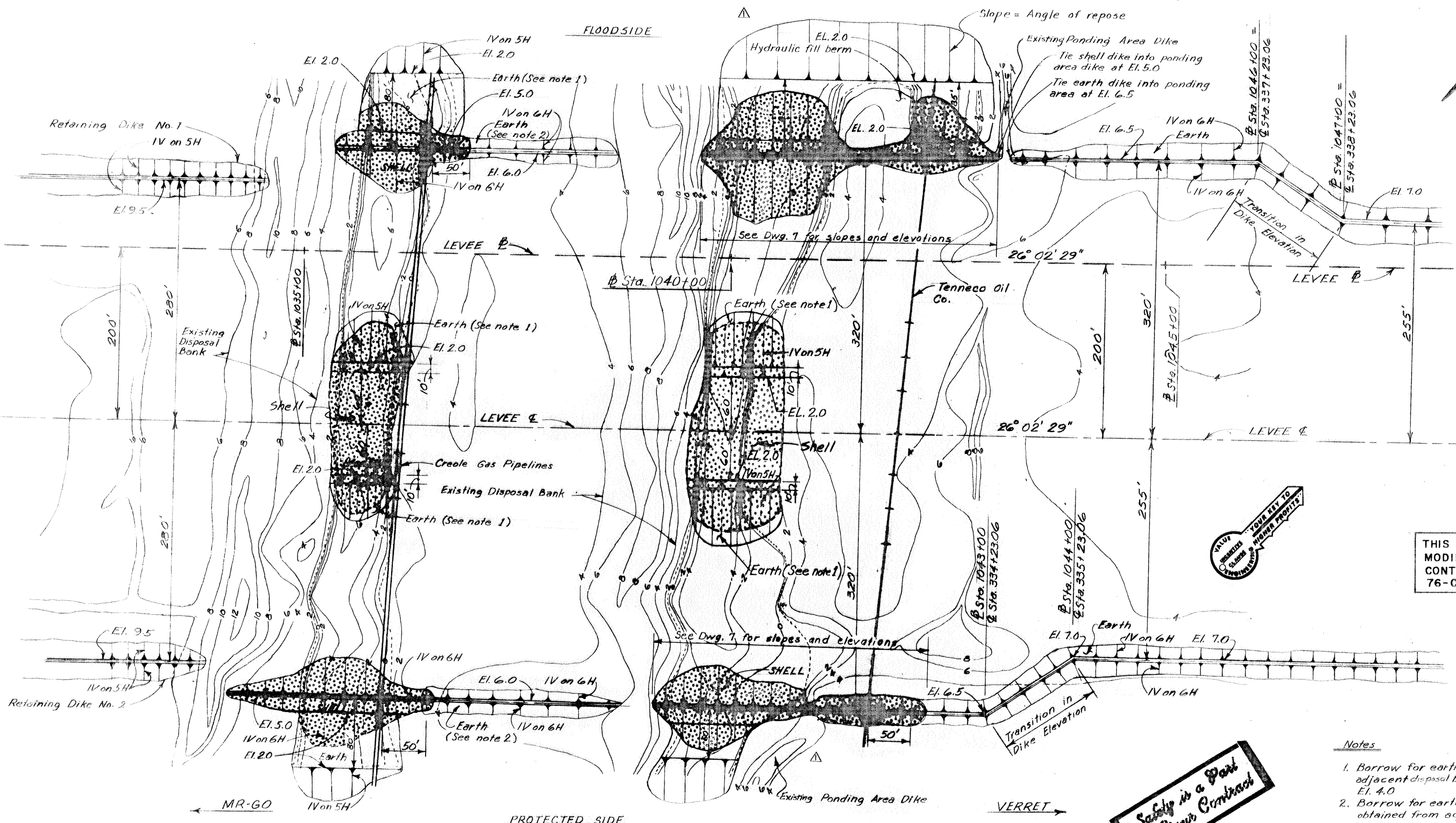


Safety is a Part of Your Contract

NOTE: DRAWING REDUCED TO ONE HALF SCALE



REVISION	DATE	DESCRIPTION	BY
U. S. ARMY ENGINEER DISTRICT, NEW ORLEANS CORPS OF ENGINEERS NEW ORLEANS, LA.			
LAKE PONTCHARTRAIN, LOUISIANA AND VICINITY CHALMETTE AREA PLAN, CHALMETTE EXTENSION HURRICANE PROTECTION LEVEE SECOND LIFT B/L STA. 945+83.62 TO B/L STA. 1117+00 ST. BERNARD PARISH, LA.			
PLAN AND PROFILE Sta. 351+23.06 to Sta. 408+23.06			
DESIGNED:	DRAWN:	CHECKED:	DATE:
L.E.D.	E.H.A.	R.P.L.	APRIL 1976
SUBMITTED:	SCALE:	FILE NO.:	
	DACW29-76-B-0192	H-8-27036	
			DWG. 4 OF 12

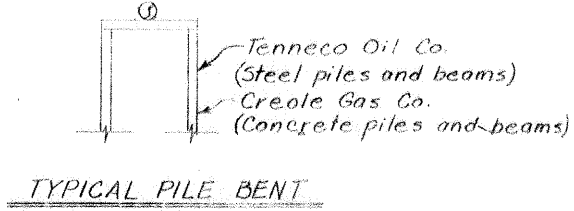
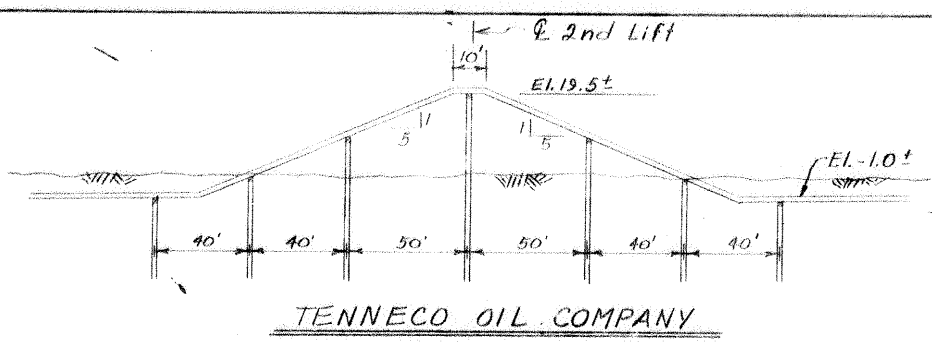
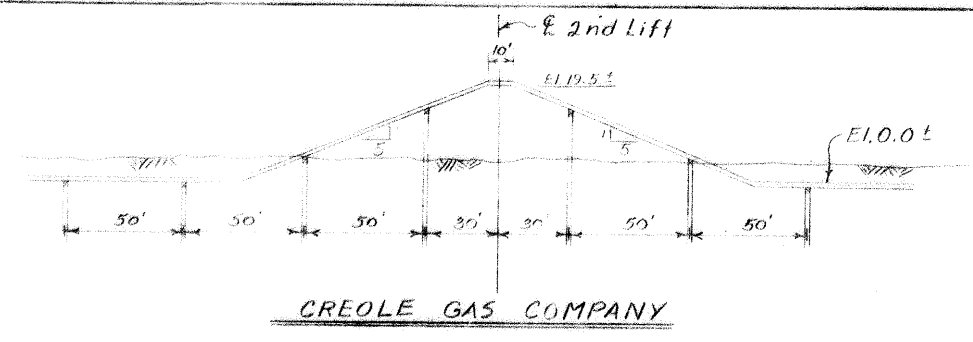
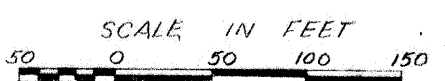


THIS PLAN ACCOMPANIES
MODIFICATION P00002 TO
CONTRACT NO. DACW29 -
76-C-0253.

- Notes**
1. Borrow for earth fill shall be obtained from adjacent disposal banks. Do not excavate below El. 4.0
 2. Borrow for earth retaining dikes shall be obtained from adjacent disposal banks. Do not excavate below El. 4.0.
 3. Exact location of pipelines to be provided by pipeline companies.

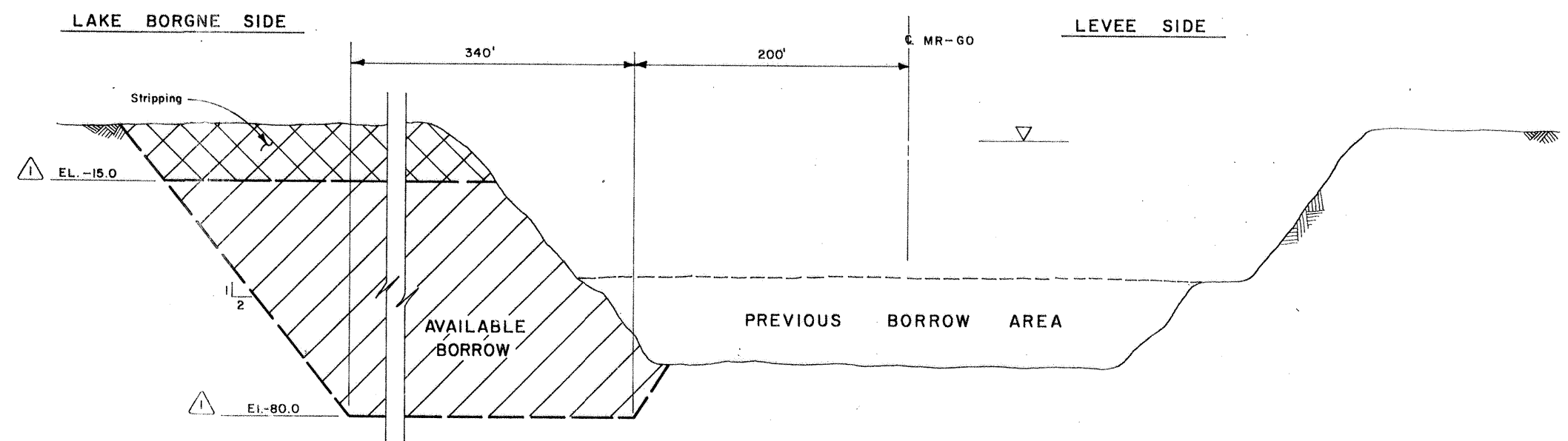
Safety is a Part of Your Contract

**RETAINING DIKES-VICINITY OF CREOLE AND TENNECO PIPELINES
CONTOURS FROM SURVEY IN FEB. 73**

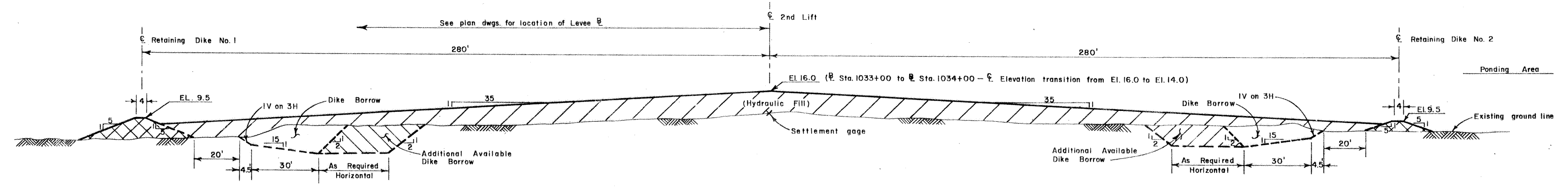


**PIPELINE CROSSING DETAILS
NOT TO SCALE**

REVISION	DATE	DESCRIPTION	BY
12-3-76		Revised retaining dike slopes of B Sta. 1039+00 to E Sta. 1044+00	Mod #2
U.S. ARMY ENGINEER DISTRICT, NEW ORLEANS CORPS OF ENGINEERS NEW ORLEANS, LA.			
LAKE PONTCHARTRAIN, LOUISIANA AND VICINITY CHALMETTE AREA PLAN, CHALMETTE EXTENSION HURRICANE PROTECTION LEVEE SECOND LIFT B/L STA. 945+8362 TO B/L STA. 1117+00 ST. BERNARD PARISH, LA.			
RETAINING DIKES-VICINITY OF CREOLE AND TENNECO PIPELINES			
DESIGNED:	DRAWN:	CHECKED:	SCALE:
L.E.D.	C.C.P.	R.P.L.	AS SHOWN
SUBMITTED:	DATE:	FILE NO.:	
	APRIL 1976	H-8-27036	
SPEC. NO. DACW29-76-B-0192		DWG. 5 OF 12	

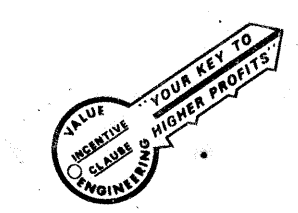


△ BORROW AREA DESIGN SECTION
 NOT TO SCALE
 MR-60 @ STA. 945+83.62 TO MR-60 @ STA. 1050+00



DESIGN SECTION
 NOT TO SCALE
 @ Sta. 945+83.62 TO @ Sta. 1034+00± (See Dwg. 5)
 @ Sta. 236+19.71 TO @ Sta. 325+23.06±

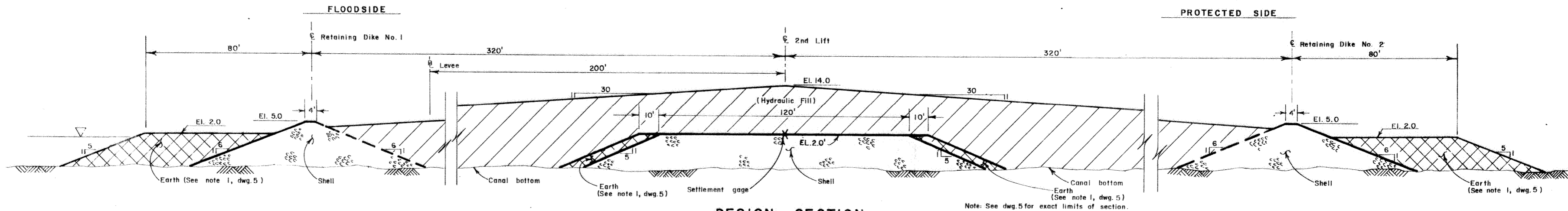
NOTES:
 1. All retaining dike construction, shell and earth, shall comply with paragraph 3-6.2 of the specification.



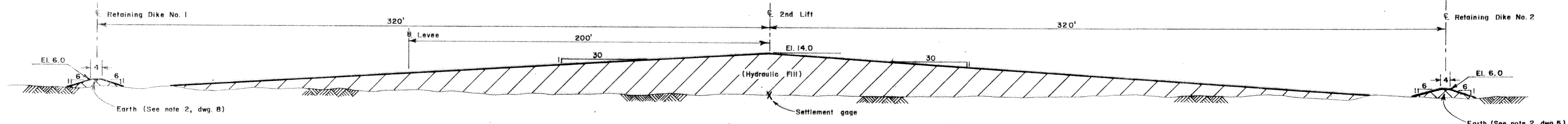
Safety is a Part of Your Contract

NOTE:
 DRAWING REDUCED TO ONE HALF SCALE

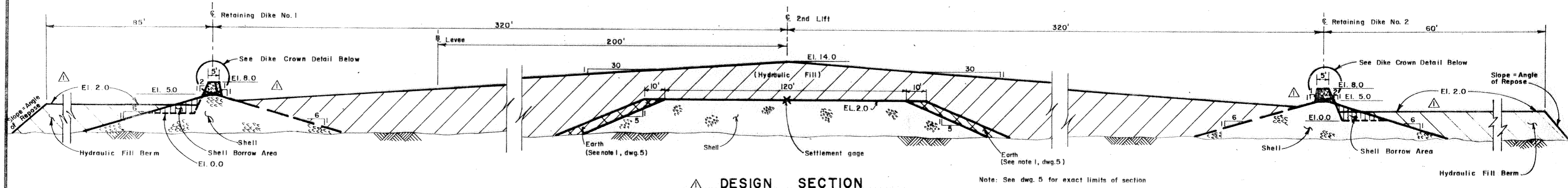
△		4-21-76	Amendment no. 1 : Added elevations to borrow area design sections	L.E.D.
REVISION	DATE	DESCRIPTION		BY
U. S. ARMY ENGINEER DISTRICT, NEW ORLEANS CORPS OF ENGINEERS NEW ORLEANS, LA.				
LAKE PONTCHARTRAIN, LOUISIANA AND VICINITY CHALMETTE AREA PLAN, CHALMETTE EXTENSION HURRICANE PROTECTION LEVEE SECOND LIFT B/L STA. 945+83.62 TO B/L STA. 1117+00 ST. BERNARD PARISH, LA.				
TYPICAL DESIGN SECTIONS				
DESIGNED:	DRAWN:	CHECKED:	DATE:	SCALE:
L.E.D.	C.C.P.	R.P.L.	APRIL 1976	AS SHOWN
SUBMITTED:		SPEC. NO.:		FILE NO.:
[Signature]		DACW29 - 76-B-0192		H-8-27036
				DWG. 6 OF 12



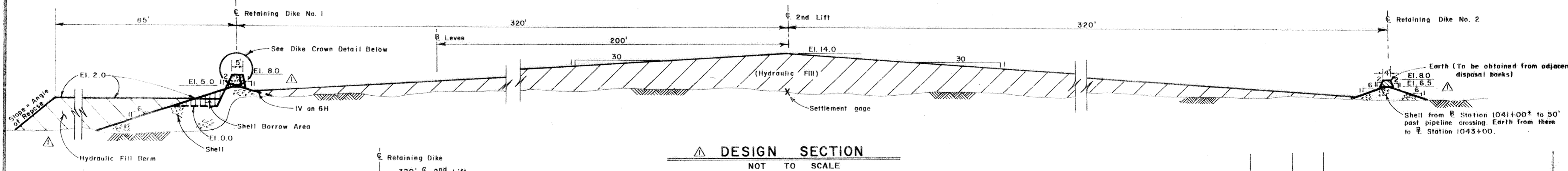
DESIGN SECTION
 NOT TO SCALE
 STA. 1034+00± TO STA. 1036+50±
 STA. 325+23.06± TO STA. 327+23.06±



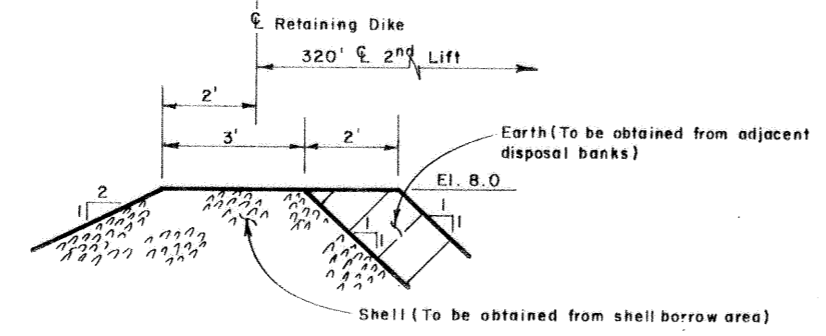
DESIGN SECTION
 NOT TO SCALE
 STA. 1036+50± TO STA. 1039+00±
 STA. 327+23.06± TO STA. 330+23.06±



DESIGN SECTION
 NOT TO SCALE
 STA. 1039+00± TO STA. 1041+00±
 STA. 330+23.06± TO STA. 332+23.06±



DESIGN SECTION
 NOT TO SCALE
 STA. 1041+00± TO STA. 1043+00±
 STA. 332+23.06± TO STA. 334+23.06±



DETAIL OF DIKE CROWN
 NOT TO SCALE

THIS PLAN ACCOMPANIES
 MODIFICATION P00002 TO
 CONTRACT NO. DACW29-
 76-C-0253.



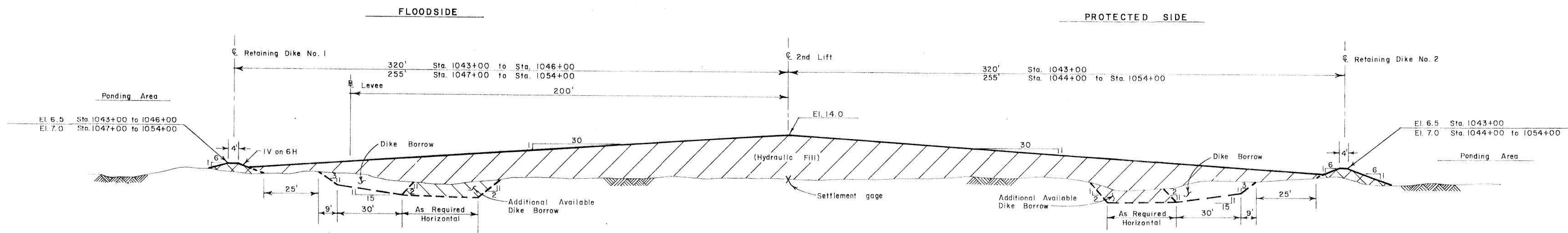
REVISION	DATE	DESCRIPTION	Mod. #	BY
1	12-3-76	Topped retaining dikes and added berm	2	L.E.D.

U.S. ARMY ENGINEER DISTRICT, NEW ORLEANS
 CORPS OF ENGINEERS
 NEW ORLEANS, LA.

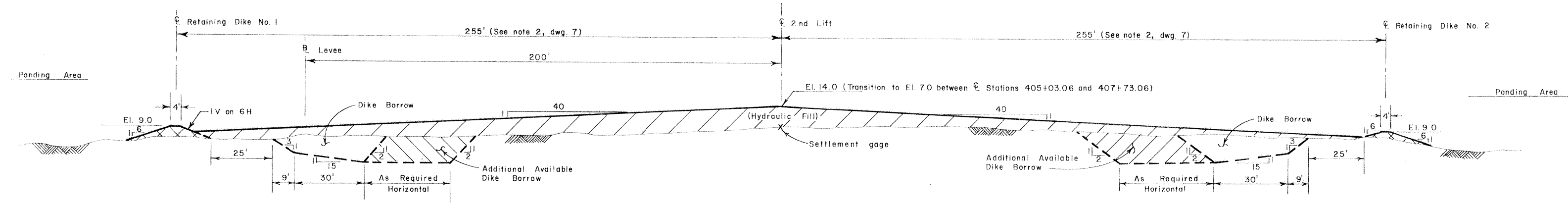
LAKE PONTCHARTRAIN, LOUISIANA AND VICINITY
 CHALMETTE AREA PLAN, CHALMETTE EXTENSION
 HURRICANE PROTECTION LEVEE
 SECOND LIFT
 B/L STA. 945+83.62 TO B/L STA. 1117+00
 ST. BERNARD PARISH, LA.

TYPICAL DESIGN SECTIONS

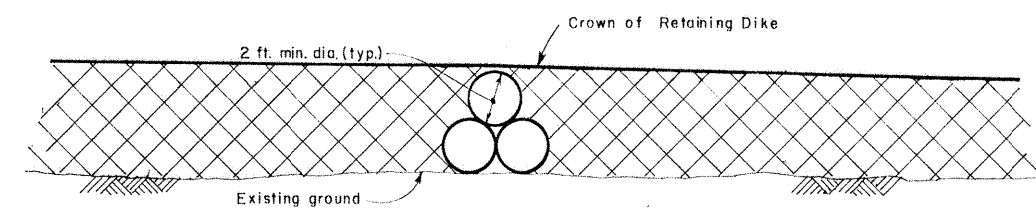
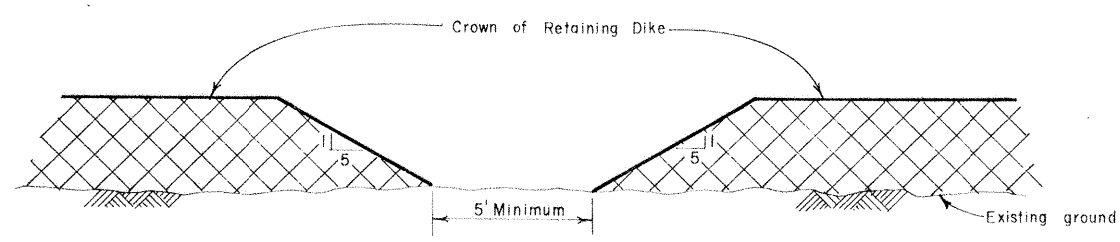
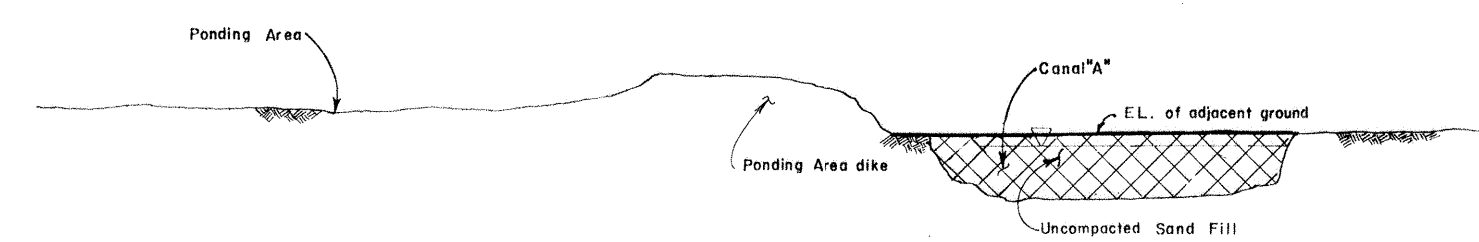
DESIGNED: L.E.D.	DRAWN: C.C.P.	CHECKED: R.P.L.	DATE: APRIL 1976	SCALE: AS SHOWN	FILE NO. H-8-27036
SUBMITTED: [Signature]	BY: [Signature]	DATE: [Signature]	NO. DACW29-76-B-0192	DRG. 7	12



DESIGN SECTION
 NOT TO SCALE
 STA. 1043+00 TO STA. 1054+00
 STA. 334+23.06 TO STA. 345+23.06



DESIGN SECTION
 NOT TO SCALE
 STA. 1055+00 TO STA. 1116+50
 STA. 345+23.06 TO STA. 407+73.06



SETTLEMENT GAGE SPECIFICATIONS

Should the contractor desire payment for placing additional fill due to foundation settlement during construction he shall furnish and install settlement gages at the locations shown on the design section in conformance with the provisions of Section 3 of the specifications.

The settlement measurement range for each settlement gage shall be for a distance of 250 feet in each direction from each settlement gage measured along the centerline of the levee, except where settlement gages are placed at less than 500 feet intervals, in which case, the settlement measurement range shall be to a point 1/2 the distance between settlement gages.

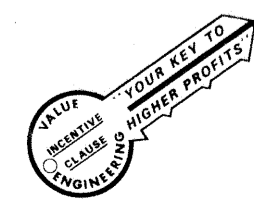
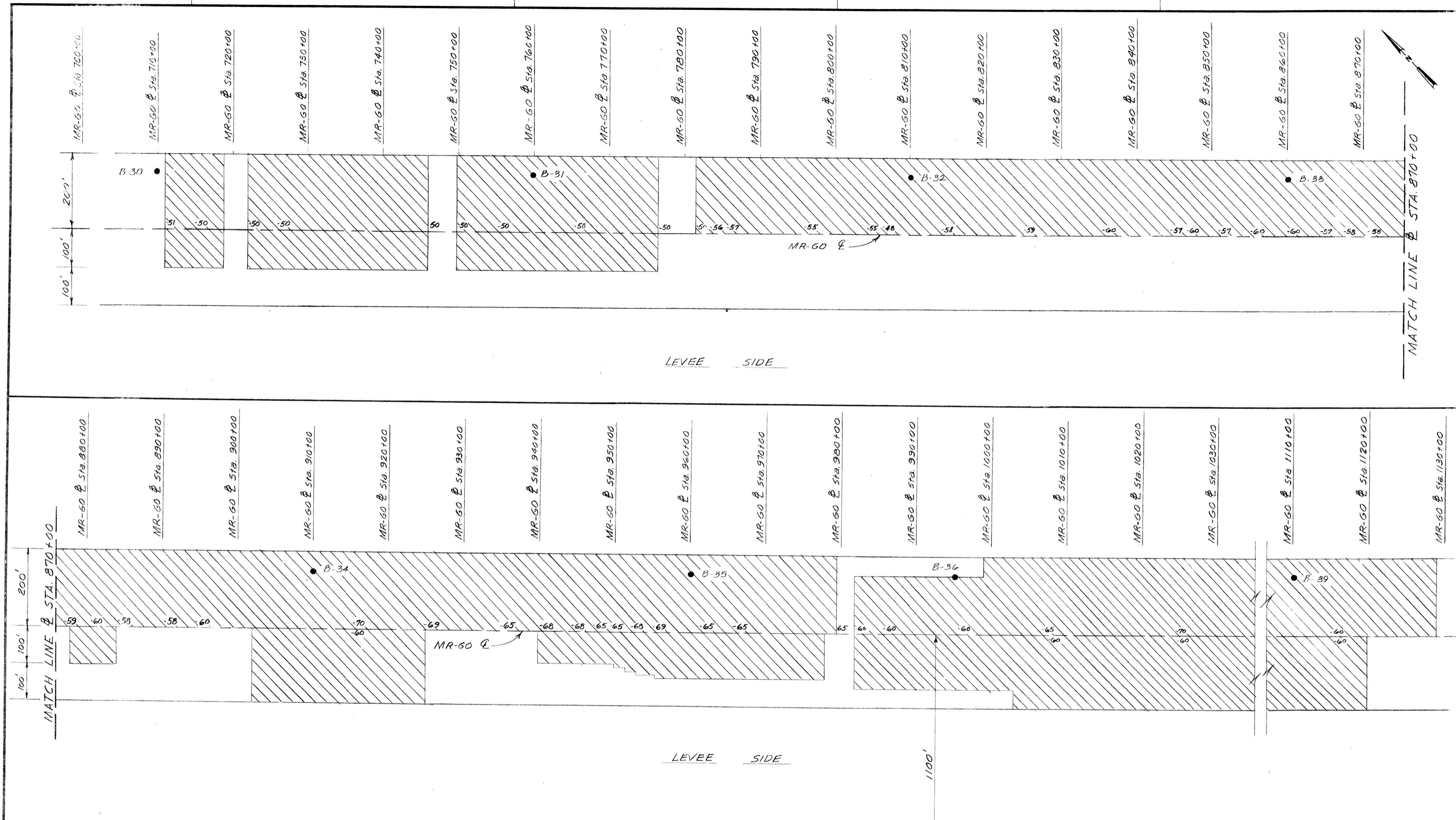
1/4" Steelplate
 Minimum 4'X4'

Safety is a Part of Your Contract

NOTE: DRAWING REDUCED TO ONE HALF SCALE

ANNUAL MEETING CLASS OF ENGINEERS YOUR KEY TO HIGHER PROFITS

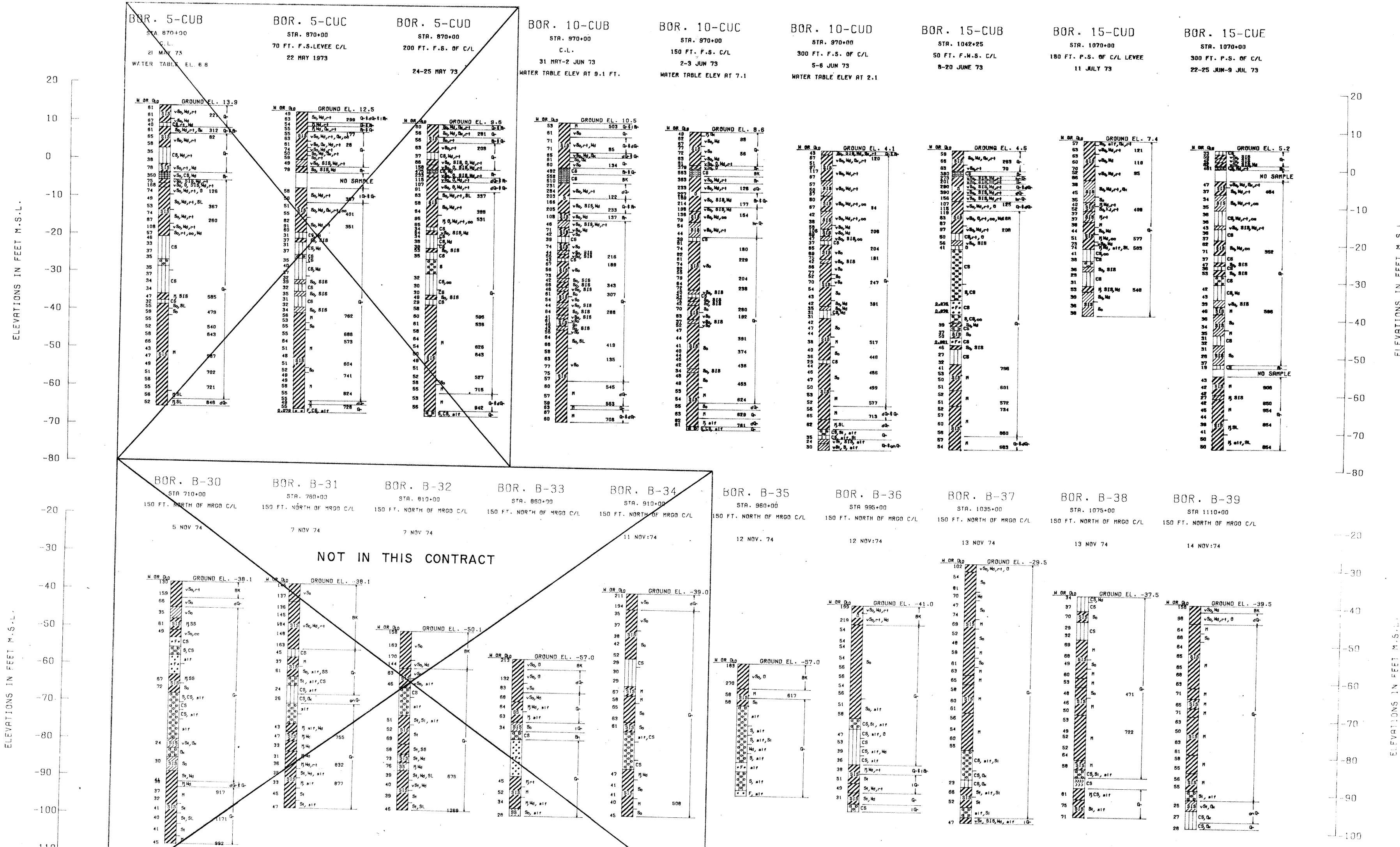
REVISION	DATE	DESCRIPTION	BY
U. S. ARMY ENGINEER DISTRICT, NEW ORLEANS CORPS OF ENGINEERS NEW ORLEANS, LA.			
LAKE PONTCHARTRAIN, LOUISIANA AND VICINITY CHALMETTE AREA PLAN, CHALMETTE EXTENSION HURRICANE PROTECTION LEVEE SECOND LIFT B/L STA. 945+83.62 TO B/L STA. 1117+00 ST. BERNARD PARISH, LA.			
TYPICAL DESIGN SECTIONS			
DESIGNED: L.E.D.	DRAWN: C.C.P.	CHECKED: R.P.L.	DATE: APRIL 1976
SUBMITTED: <i>[Signature]</i>		SPEC. NO.: DACW29-76-B-0192	SCALE: AS SHOWN
		FILE NO.: H-8-27036	DWG. 8 OF 12



Safety is a Part of Your Contract

NOTE: DRAWING REDUCED TO ONE HALF SCALE

REVISION	DATE	DESCRIPTION	BY
U. S. ARMY ENGINEER DISTRICT, NEW ORLEANS CORPS OF ENGINEERS NEW ORLEANS, LA.			
LAKE PONTCHARTRAIN, LOUISIANA AND VICINITY CHALMETTE AREA PLAN, CHALMETTE EXTENSION HURRICANE PROTECTION LEVEE SECOND LIFT B/L STA. 945+8362 TO B/L STA. 1117+00 ST BERNARD PARISH, LA.			
PREVIOUS DREDGING IN MR-GO			
DESIGNED: L.E.D.	DRAWN: C.C.P.	CHECKED: R.P.L.	DATE: APRIL 1976
SUBMITTED: [Signature]		SPEC. NO. DACW29 - 76-B-0192	SCALE: AS SHOWN
		FILE NO. H-8-27036	DWG. 9 of 12

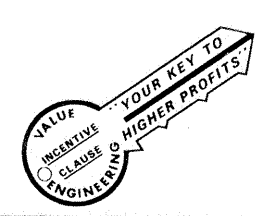


ELEVATIONS IN FEET M.S.L.

ELEVATIONS IN FEET M.S.L.

ELEVATIONS IN FEET M.S.L.

ELEVATIONS IN FEET M.S.L.



Safety is a Part of Your Contract

NOTE: DRAWING REDUCED TO ONE HALF SCALE

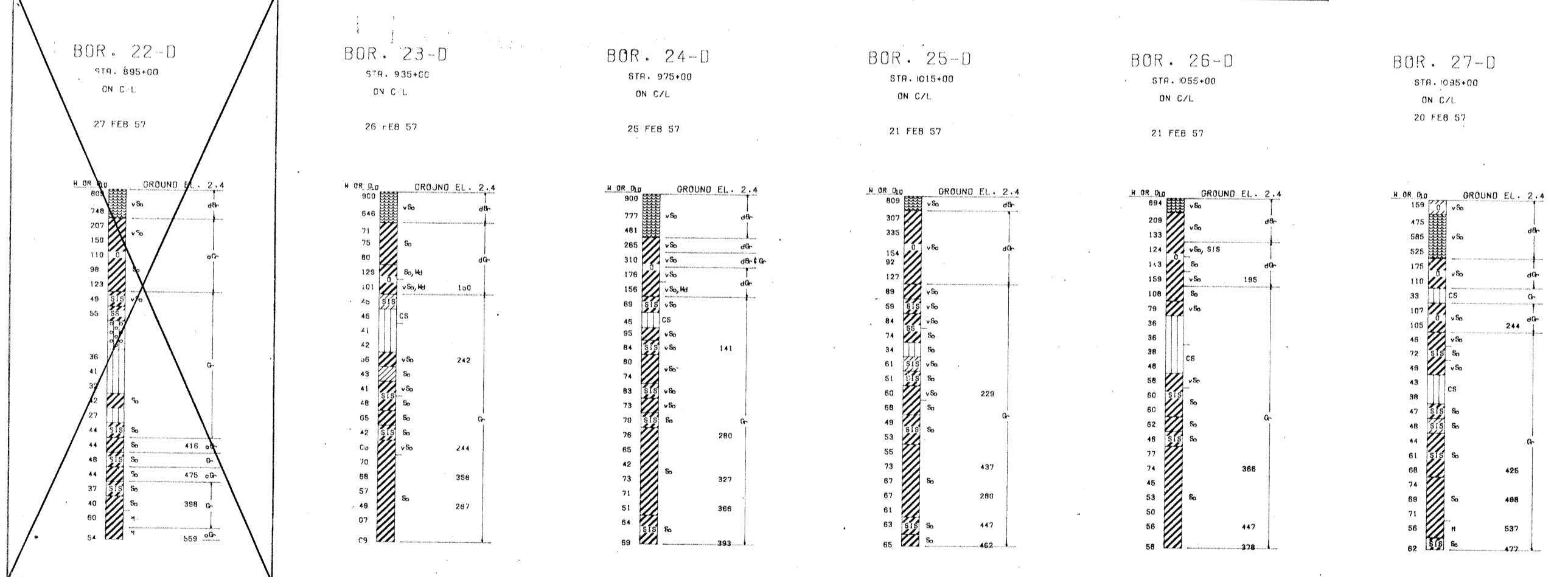
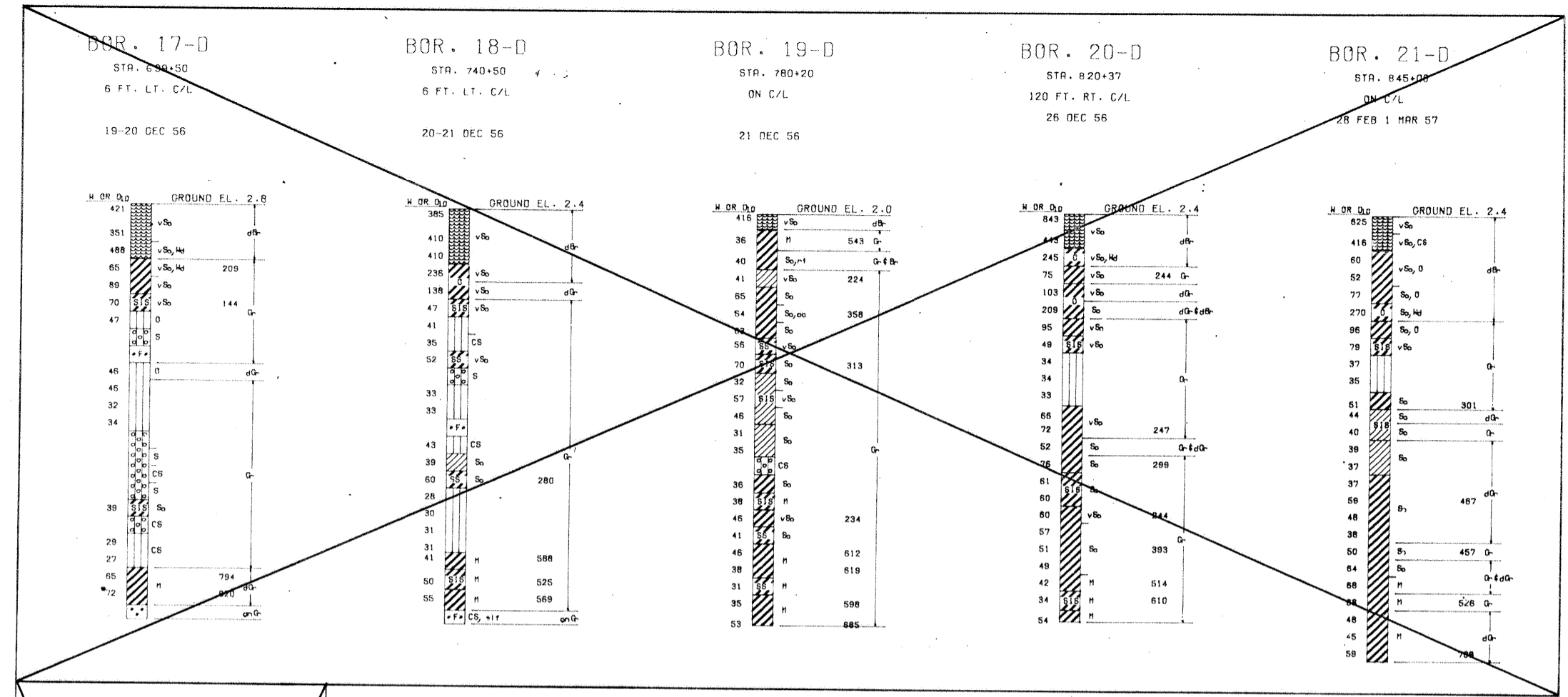
U.S. ARMY ENGINEER DISTRICT, NEW ORLEANS
CORPS OF ENGINEERS
NEW ORLEANS, LA.

LAKE PONTCHARTRAIN, LOUISIANA AND VICINITY
CHALMETTE AREA PLAN, CHALMETTE EXTENSION
HURRICANE PROTECTION LEVEE
SECOND LIFT
B/L STA. 945+83.62 TO B/L STA. 1117+00
ST. BERNARD PARISH, LA.

SOIL BORINGS

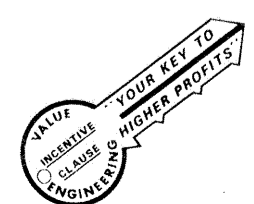
DESIGNED	DRAWN	CHECKED	DATE	SCALE	FILE NO.
L.E.D.	C.C.P.	R.P.L.	APRIL 1976	AS SHOWN	H-8-27036
SUBMITTED	SPEC. NO.		DATE	DWG. NO.	OF
	DACW29-76-B-0192			10	12

ELEVATIONS IN FEET M.S.L.



ELEVATIONS IN FEET M.S.L.

NOTES:
 1. Stations shown are referenced to the MR-GO B.
 2. These borings were taken prior to dredging of MR-GO.
 3. These borings are representative of the types of material that will be encountered during dredging of the borrow areas on the north side of the MR-GO.



Safety is a Part of Your Profits

NOTE: DRAWING REDUCED TO ONE HALF SCALE

REVISION	DATE	DESCRIPTION	BY
U. S. ARMY ENGINEER DISTRICT, NEW ORLEANS CORPS OF ENGINEERS NEW ORLEANS, LA.			
LAKE PONTCHARTRAIN, LOUISIANA AND VICINITY CHALMETTE AREA PLAN, CHALMETTE EXTENSION HURRICANE PROTECTION LEVEE SECOND LIFT B/L STA. 945+83.62 TO B/L STA. 1117+00 ST. BERNARD PARISH, LA.			
SOIL BORINGS			
DESIGNED: L.E.D.	DRAWN: M.I.P.	CHECKED: R.P.L.	DATE: APRIL 1976
SUBMITTED: <i>Alma</i>		SPEC. NO: DACW29-76-B-0192	FILE NO: H-8-27036
		SCALE: AS SHOWN	DWG. 11 OF 12

UNIFIED SOIL CLASSIFICATION

MAJOR DIVISION	TYPE	LETTER SYMBOL	SYM BOL	TYPICAL NAMES	
COARSE - GRAINED SOILS More than half of material is larger than No. 200 sieve size	GRAVELS More than half of larger than No. 4 sieve size, smaller than No. 4 sieve size.	CLEAN GRAVEL (Little or No Fines)	GW	GRAVEL, Well Graded, gravel-sand mixtures, little or no fines	
		GRAVEL WITH FINES (Appreciable Amount of Fines)	GP	GRAVEL, Poorly Graded, gravel-sand mixtures, little or no fines	
	SANDS More than half of larger than No. 4 sieve size, smaller than No. 4 sieve size.	CLEAN SAND (Little or No Fines)	SW	SAND, Well - Graded, gravelly sands	
		SANDS WITH FINES (Appreciable Amount of Fines)	SP	SAND, Poorly - Graded, gravelly sands	
			SM	SILTY SAND, sand-silt mixtures	
			SC	CLAYEY SAND, sand-clay mixtures	
		FINE - GRAINED SOILS More than half the material is smaller than No. 200 sieve size.	SILTS AND CLAYS (Liquid Limit < 50)	ML	SILT & very fine sand, silty or clayey fine sand or clayey silt with slight plasticity
				CL	LEAN CLAY, Sandy Clay, Silty Clay, of low to medium plasticity
			SILTS AND CLAYS (Liquid Limit > 50)	MH	SILT, fine sandy or silty soil with high plasticity
				CH	FAT CLAY, inorganic clay of high plasticity
HIGHLY ORGANIC SOILS		OH	ORGANIC CLAYS of medium to high plasticity, organic silts		
	WOOD	Pt	PEAT, and other highly organic soil		
	WOOD	Wd	WOOD		
SHELLS	SI	SHELLS			
NO SAMPLE					

NOTE: Soils possessing characteristics of two groups are designated by combinations of group symbols

DESCRIPTIVE SYMBOLS

COLOR		CONSISTENCY FOR COHESIVE SOILS			MODIFICATIONS	
COLOR	SYMBOL	CONSISTENCY	COHESION IN LBS./SQ. FT. FROM UNCONFINED COMPRESSION TEST	SYMBOL	MODIFICATION	SYMBOL
TAN	T	VERY SOFT	< 250	vSo	Traces	Tr-
YELLOW	Y	SOFT	250 - 500	So	Fine	F
RED	R	MEDIUM	500 - 1000	M	Medium	M
BLACK	BK	STIFF	1000 - 2000	St	Coarse	C
GRAY	Gr	VERY STIFF	2000 - 4000	vSt	Concretions	cc
LIGHT GRAY	IGr	HARD	> 4000	H	Rootlets	rt
DARK GRAY	dGr				Lignite fragments	lg
BROWN	Br				Shale fragments	sh
LIGHT BROWN	lBr				Sandstone fragments	sds
DARK BROWN	dBr				Shell fragments	sif
BROWNISH - GRAY	br Gr				Organic matter	O
GRAYISH - BROWN	gy Br				Clay strata or lenses	CS
GREENISH - GRAY	gn Gr				Silt strata or lenses	SIS
GRAYISH - GREEN	gy Gn				Sand strata or lenses	SS
GREEN	Gn				Sandy	S
BLUE	Bl				Gravelly	G
BLUE - GREEN	Bl Gn				Boulders	B
WHITE	Wh				Slickensides	SL
MOTTLED	Mot				Wood	Wd
					Oxidized	Ox

PLASTICITY CHART
For classification of fine-grained soils

NOTES:

FIGURES TO LEFT OF BORING UNDER COLUMN "W OR D₁₀"
Are natural water contents in percent dry weight
When underlined denotes D₁₀ size in mm*

FIGURES TO LEFT OF BORING UNDER COLUMNS "LL" AND "PL"
Are liquid and plastic limits, respectively

SYMBOLS TO LEFT OF BORING

- ▽ Ground-water surface and date observed
- ⊙ Denotes location of consolidation test**
- ⊕ Denotes location of consolidated-drained direct shear test**
- ⊗ Denotes location of consolidated-undrained triaxial compression test**
- ⊙ Denotes location of unconsolidated-undrained triaxial compression test**
- ⊕ Denotes location of sample subjected to consolidation test and each of the above three types of shear tests**

FW Denotes free water encountered in boring or sample

FIGURES TO RIGHT OF BORING

Are values of cohesion in lbs./sq. ft. from unconfined compression tests

In parenthesis are driving resistances in blows per foot determined with a standard split spoon sampler (1 3/8" I.D., 2" O.D.) and a 140 lb. driving hammer with a 30" drop

Where underlined with a solid line denotes laboratory permeability in centimeters per second of undisturbed sample

Where underlined with a dashed line denotes laboratory permeability in centimeters per second of sample remoulded to the estimated natural void ratio

*The D₁₀ size of a soil is the grain diameter in millimeters of which 10% of the soil is finer, and 90% coarser than D₁₀

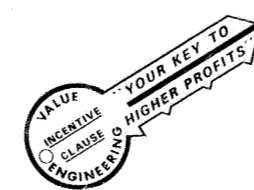
**Results of these tests are available for inspection in the U.S. Army Engineer District Office, if these symbols appear beside the boring logs on the drawings

TYPICAL NOTES:

While the borings are representative of subsurface conditions at their respective locations and for their respective vertical reaches, local variations characteristic of the subsurface materials of the region are anticipated and, if encountered, such variations will not be considered as differing materially within the purview of clause 4 of the contract.

Ground-water elevations shown on the boring logs represents ground-water surfaces encountered on the dates shown. Absence of water surface data on certain borings implies that no ground-water data is available, but does not necessarily mean that ground water will not be encountered at the locations or within the vertical reaches of these borings.

Consistency of cohesive soils shown on the boring logs is based on driller's log and visual examination and is approximate, except within those vertical reaches of the borings where shear strengths from unconfined compression tests are shown.



Safety is a Part of Your Contract

NOTE: DRAWING REDUCED TO ONE HALF SCALE

REVISION	DATE	DESCRIPTION	BY
U. S. ARMY ENGINEER DISTRICT, NEW ORLEANS CORPS OF ENGINEERS NEW ORLEANS, LA.			
LAKE PONTCHARTRAIN, LOUISIANA AND VICINITY CHALMETTE AREA PLAN, CHALMETTE EXTENSION HURRICANE PROTECTION LEVEE SECOND LIFT B/L STA. 945+83.62 TO B/L STA. 1117+00 ST. BERNARD PARISH, LA.			
SOIL BORING LEGEND			
DESIGNED	DRAWN	CHECKED	DATE
L.E.D.	E.M.M.	P.L.	APRIL 1976
SUBMITTED	SCALE		FILE NO.
	AS SHOWN		H-8-27036
SPEC. NO.		DWN. 12 OF 12	
DACW29-76-B-0192			