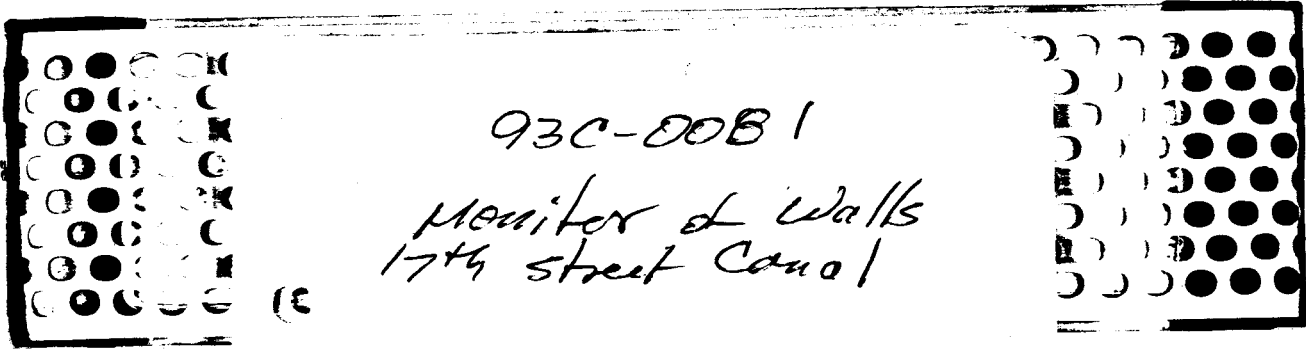


2 copies

to
12 Sep - H

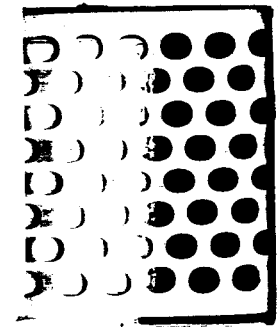
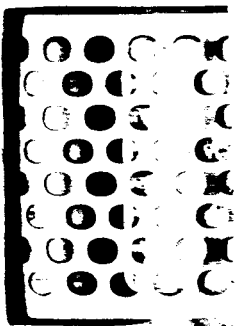
(A0006945)



93C-00B1

Monitor of Walls
17th Street Canal

A. E. Budley Burns



10 Monday I - Beam FLS
of well Mark # 24

1st Tk

Note: Contactur
set form 1/4 TO P/S
before pour to allow
full movement TO FLS

2nd Tk
NOE Used 1/4" set back
for 0" measured from
there with instrument

3rd Tk Also adjustment



C. Burns
11 July 94

North
1/2 FLS
Mid
1/4 FLS
South
3/8 FLS

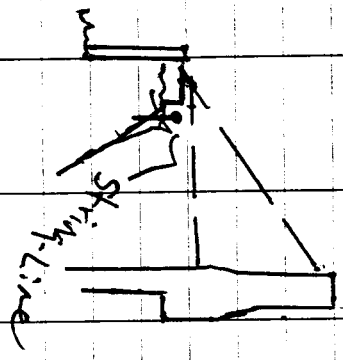
1/8"
TO FLS
1"
TO FLS
1/2"
TO FLS

1/8"
TO FLS
1/2"
TO FLS
1/4"
TO FLS



Monitor of Mono 94
 Before & After removal of forms. Measurement taken when instrument with point set on top before any work done in breaking forms

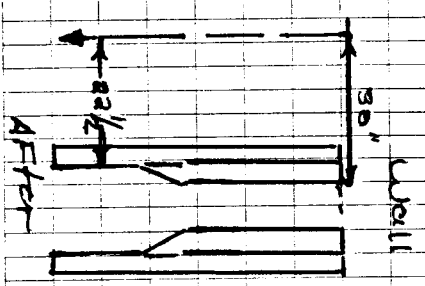
I-beam Movement Fk
 Well + ~~200~~ String
 Line Set Fk of I-beam
 2"x4" on each end independent
 of all activity



July 94

Before well
 North 0"
 Mid pt 0"
 South 0"
 After well
 North 1/2"
 Mid pt 1/8"
 South 1/4"

I beam
 Before North 0"
 1.1.1 0"
 5.0 0"



Monitor slow 100
After completion
of pour within
adjustment



QUEENS

Not used to check line
on cap before after
before after

Thurs
14 July 94

North

5/6 P/S

Mid

5/6 P/S

South

1/2 P/S

I-beam

After

North

Mid

1"

SO

3/4"



Monolith # 102
 For alignment using plane
 for beam Form &
 shooting line with X

TBM	164	790	164	6.26
POB before level				
N 3.23	4.67	N	3.23	4.65
M 3.62	4.28	M	3.63	4.27
S 3.96	3.94	S	3.96	3.94
TBM			164	6.26

Monolith I-beam

6.26



C. Budney

15 July 94

X @ 180	F/S	10/1	
Alignment of wall			
beam			Not correct
North	1/4" F/S	1/4"	1/8" F/S
M.D	1/4" F/S	1/4"	1/8" F/S
Southern	1/4" F/S	1/4"	1/8" F/S

Alignment I-beam		
before		
North	1/4"	1/8" = 1/8"
M.D	1/4"	1/8" = 1/8"
S	3/4"	1" = 1/4"



Mon, for Maso # 10x
11/11/10

Note: Conductor placed
 FLS leg from - 0.50
 TD top of dry bottom
 @ 11:30 AM completed @
 12:00 AM let concrete
 set until 3:00 PM.
 Then completed pour
 TB top of 10x10 ft @
 elev 14.00. There was
 some slumping during
 pour & pour dry
 bottom to top. Very
 little $\frac{1}{2}$ " on north
 and $\frac{1}{2}$ " on south
 end. Normal form setting
 was used. Other than
 pouring 1.35 ft on FLS
 and pouring remaining
 of wall 3.0 hrs later.

T @ 100 FLS 10' 19 July
 Discrete
 1/2
 Mid 1/2
 North 1/8
 10' occupied
 19 July 7:30 AM

18 July 19
19 July



Check for Alignment
Plumb Lines * ~~100~~ 106



21 July 94

I-beam

North

Mid

South

position
per I-beam
plumb lines

U2011
before

North

Mid

South

5 1/4"

5"



Alignment ± Plumb
 Mono # 108

Wall set from plumb
 North = 0"
 Mid = 0"
 South = 0-

TBM 1.14 7.29 N.I.
 C.13

Note see sketch by contractor
 of pouring this mono 108
 doled 13 1/4" of channel
 on back set 1/2" to F/S
 Shims put between form
 & channel to hold form
 2) Plan dimension. etc.
 Russell, consultant for
 Pittman Const Co. on job site
 planning pour.



2/July 94
 A Burns

± 100 F/S Scribe Mark 101
 AF for below

North 1/2" 1/2"
 Mid 1" 1"
 South 6 3/4" 6 3/4"

I-beam 111 27.29
 post
 with 2 x 4 =
 Mid 2.602
 Rain poured
 slow after pour.

So 2.51"
 below (string line) Acher
 Nor 3/4" 3/4" 2"
 Mid 2 1/4" 2"
 South 1 1/8" 1 1/8" 3/4" 1"
 2 1/2" 2 1/2" 3/8"



Vehicle alignment of
Motor # 106

This is normal Part
Meaning: Shaps welded
to sheet pile @ ± 30"
spacing and channel welded
to shaps to support bottom
of Pile Form Plan
dimension.



A. Bunker

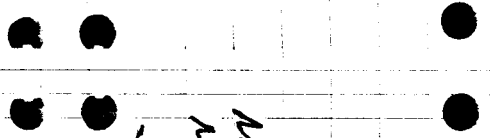
25 July 51

North
Pile
Soul
before
1" (23)
1" (23)
1" 23

After
0" 22 1/2
1/16 22 3/16
0 22 1/2

I-Beam
North
Mid
South
before
3 7/8
4 1/8
4 7/8

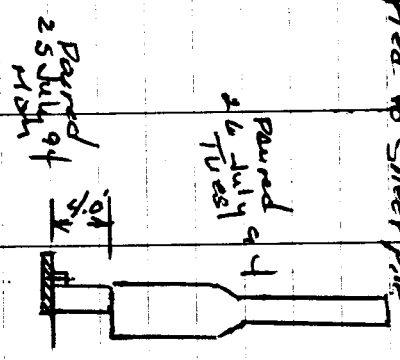
After
4 3/4
4 7/8
5 3/8



Monday # 110
2nd pour

Poured bottom - 0:50 to 3:50
by FLS 25 July
94 Form for FLS
Left Standing. Longplate
Pour Form Elev 3:50
TO TOP Elev 140
FLS \$ PK.

Contractor used bolts set @ ± 30" intervals in diameter 1 drilled thru dry bottom TO Mainoin back wall! Al. gmmant see detail! NO Straps tied to Shear pile



C Burn 26 July 99

Contractor used 4 - diagonal struts from form to I-beam (Kicker) other four in place but not used. wall

Worky	0" (22 1/2)	0" 22 1/2
Worky	0" (22 1/2)	0" 22 1/2
Worky	0" (22 1/2)	0" 22 1/2
Worky	0" (22 1/2)	0" 22 1/2

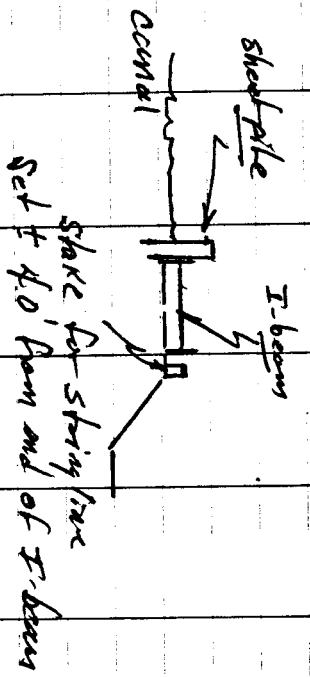
I-Beam below
Worky 1/8
Mid 1"
Sashy 3/4
NO Movement was found upon removal of forms on Thurs 28 July 94. Also accepted.

of top
1 1/4
3/4
1/2



How far from # 11 R
 All Form work Normal
 as Sub M. Hed.

Measurement Made 8' from
 Top of Form on p/s to
 Outside of Form
 Mid + South end.



THURS
 28 July 57

Wall before
 10 1/2" (23")
 M.D 1/2" (23")
 SD 1/2" (23")
 After
 0 1/4"
 0"
 0"

Work string line for I-beam when its
 at I-beam.

I-beam before after
 1 1/4" 2 1/2" = 3/4"
 1 7/8" 2 3/4" = 1 1/8"
 2" 2 7/8" = 1 7/8"
 50



Monitor of Mono #114

C. Burns 29 July 94 21

Note: 8.0' down from
 Top Elev 14.0' measure
 23" before pair top
 set @ 30" from inside
 Face of Form on P/S.
 Plumb bob @ North &
 South end. string line
 set on P/S Corn, north
 to South end 1/2" for
 chamber strip (mid
 point)

~~not 1/2" above~~
 1/2" / ~~above~~

	Before	After
North 23" 3/8	22 1/2"	22 1/2"
Mid 23" 1/2	22 1/2"	22 1/2"
South 23" 1/2	22 1/2"	22 1/2"
I-beam (Wood F/S)		
North 5/8	1 5/8	
Mid 1"	1 7/8	
South 1 1/4"	2 1/8	



Memorandum of Understanding
W/L S/A

All power off for this
Power Power Line @
Plant Site 35485.

● ●
Before
W/L 11

50 2 3/8"

After 2 Aug
22 1/2 - 22 1/2

NO 2 3/8"

22 1/2 - 22 1/2

● ●
Well accepted
0800 ~~Time~~ 2 Aug 94

● ●
I-Beam
before

100 2 1/8"

After
2 3/4"

Mid 2"

2 1/8"

50 2 1/2"

3 3/8"



Monsieur 1/16 Free Stoubrug (Balkhead)

Business 5th August Fri



String line set on the east side of I-beam

String line

I-beam below	After
Norby 2 3/4	2 3/4
Mid 2 1/2	3 1/4
Souby 2 3/8	3 1/8

Wall before	After
Norby 1" (23")	2 2 1/2
Mid 1" (23")	2 2 1/2
Souby 3/4 (22 3/4")	2 2 1/2



11/2 bulkhead
11/2 fill in

11/2 fill in set 3/4" to 4/5"
use string line.

I-beam stringline set on
east side I-beam. (1985)



11/8 before after

North 2 3/8" 2 2 1/4"
M.D. 23 22 1/2
South 23 22 1/2

I-beam before after

North 1 1/2" 2 1/4"
M.D. 2 1/2" 2 7/8"
South 2 1/4" 2 3/4"



120 bulkhead
115 All-in

Fill-in checked with
Shrimpy line set @ Mid-
Chum Pan 3/4 @ Mid-
Pt. to P/S.

Churner

9 Axes

Lab 11
before

north 23'

22 1/2

Mid 23'

22 1/2

South 23'

22 1/2

I. Brown
before

North 1 3/8"

2 1/2"

Mid 1 7/8"

2 5/8"

South 2 1/4"

2 1/8"



Trans Bulkhead
Fill-in # 117

Sum

Wed 10 A.C. 94 26

Fill-in Set @ 3/4" in
Mid point belt
part Spring line
Set on north side
inside of form
Atk pair 3/4" O.D.
very firm.

● ●
● ●
● ● before 23 1/4
● ● 23

After

Mid 23
Sourly 23 1/8

Spring line for I-beam
Set on fls of I-beam
Measurement for run

● ●
● ● before 1/2
● ● Mid 3/4

I-beam

After

Sourly 7/8

2"



Acorn Bulhead 124
Fill-in 119

Fill-in Measurement @
Mid-Point $\frac{3}{4}$ to
R/L within string line.

OSummer

Trans
11 Aug 24

Acorn 124	22 1/2
Top edge	22 1/2
Bottom 23 1/8	22 1/2
Mid 23	22 1/2
South 23 1/2	22 1/2

Acorn 124

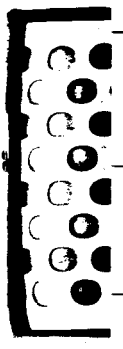
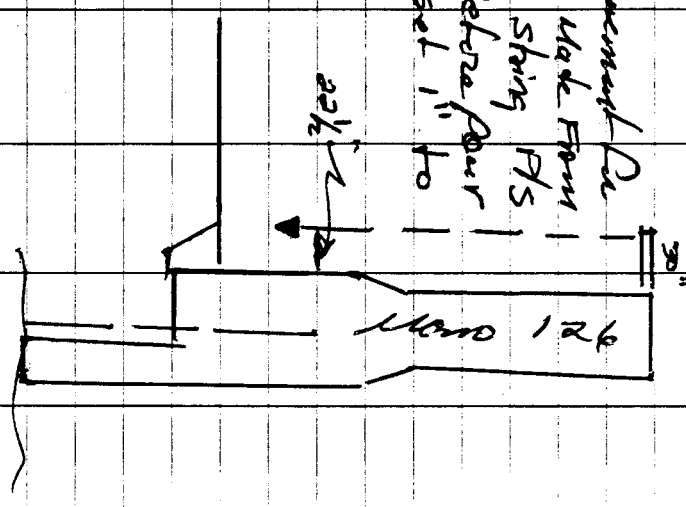
I-beam
before

North $\frac{7}{8}$ " 1 1/8 "
Mid $1 \frac{1}{8}$ " 2"
South $1 \frac{1}{4}$ " 2 1/4"



Hand 126 Built Hand
" 121 A.I.I.-117
P/S F/S

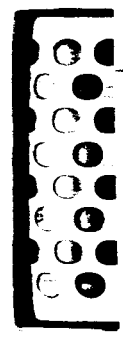
Measurement On
Plumb Made From
Plumb String P/S
23" Before Pour
wall set 1 1/8" to
P/S.



12 Aug 94

120205 126
 wall
 before 2 3/8" AF for 2 2 1/2"
 car 2 3/8"
 wall 2 3/8"
 early 2 3/8" 2 2 1/2"

Hand 126
 I-beam
 before 4
 work 3" AF for 4
 M.D. 3 1/8" 3 7/8"
 work 3 1/8" 3 5/8"



~~March 11~~
March 11 Bullhead 128
130

G. Gunn
15 Aug 94 29

~~March 11~~

Round	128	old
March before		22 1/2
Mid	23	22 1/2
Sandys	22 7/8	22 1/2
I began before		
March	1 3/4	2 1/8
Mid	1 1/2	2
March	1	1 5/8



Job 93C0081
17th Street Canal
Floodwall

Monitor of Type I
Wall Mono 133 thru
Mono 162.
Contractor's Phase III

Harrison to Veterans
(CAB) ~~East~~ bank
East bank

Monitor for I-beam
& vorticle movement
of wall.

Budaly
Burn

Mess for slons 143 Bulkha
 " 13/8 Fill-in

See pg 7. Pins book
 On data 1

A. Burn

25 Aug 97



before

After

NO 2 3/4
 UP 1

22 5/8

M.D. String Line

0

SD 2 3/4

22 1/2



T-beam
 before
 after



NO 1 3/8
 M.D. 1 3/8
 SD 1

2

M.D. 1 3/8

1 3/4

SD 1

1 1/4



Monitor
 " 139
 144 Bkhd
 Fill-in

see pg 7
 for detail
 7 hrs book

0 Bumer
 26 Aug 94

dark before
 23 1/4

after
 22 1/2

Mid string
 F/S top

South 23

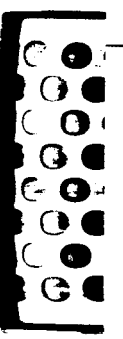
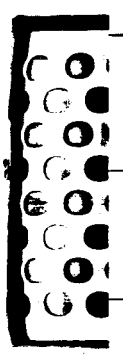
22 3/8

I-beam
 before
 3" 3/2

Mid 3 1/4" 4"

South 3 3/8"

4 1/4"



Alon. for class

see pg 7 hrs
An detail

14B
14B

book

BR 1d
Fillin

C. Bunn

29 June 94

before well

Worky 23

W.D

Southy 23

After

22 3/8

22 5/8

before

I-Beam

Worky 3 1/8

M.D 2 7/8

Southy 2 1/2

After

3 1/2

3 3/8

2 7/8



Members Hand 150 Bolt Hd

See pg 7 kn's book
An detail

Elev I-beam

before Elev After Elev
H.H. 6.23

1.54 7.77

3.14

~~3.44~~ 4.63

3.11

4.61

2.97

~~2.80~~ 4.80

3.00

4.77

3.05

~~4.78~~ 4.68

3.08

4.69

1.54 4.23



C Beam

Thurs
1 Sept 94

cell

Northy 22 7/8

22 1/2

~~Mid~~ strings
Crown

Southy 23 "

22 1/2

I-beam lateral movement
of

before

Northy 23 1/4

3 1/4

Mid 3 1/4

4 "

Southy 4 1/4

4 3/4



Monitor for mono 152

Alhd

e-Bumer

Prei
2 Sept 94

See pg 7 this
book for detail

• •

Cell 11

• •
Working before 23 "

22 1/2

• •
Mid string 2 1/4 "

0 "

• •
South 23

22 1/2

• •

• •
I beam

• •
After

• •
Working before 6 1/4 "

• •
7 3/8 "

• •
Mid 7 1/2 "

• •
8 1/4 "

• •
South 8 1/8 "

• •
9 1/4 "



Worlex Hand

154 BKHD
151 ALIN

See pg 7 this book
for detail

O-Burns

T205
Sept 94

46011

works before

22 1/2

M.D Shows
line

Sawks 22 3/8

22 1/2

II beam
before

above

works 3 1/2"

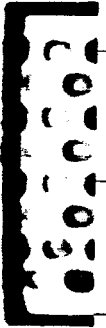
4 1/4"

M.D 3 1/8"

4"

Sawks 2 1/2"

3 3/8"



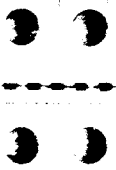
Monitor Hand 156

see p 9 ? this book
for data!



C. Brune

Wed
7 Sep 94



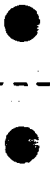
well
before
23"

22 1/2

M. D string
line

Soulin 23 1/4

22 5/8



I beam

before

1 1/8"

2 1/8

M. D

1 3/4"

3"

Soulin

2 1/8"

3 5/8

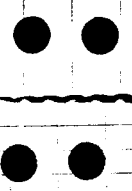


Mawyer
" " 158 Blks
" " 155 D11-in

See pg 7 his book
for detail

C. BURRIS
Sept 94

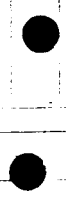
THURS



Wall
North 23 1/4
22 5/8

Mid shous
0

~~South~~
23 1/8
22 9/16

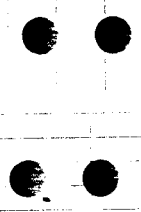


I beam
below

North 3 7/8
4 5/8

Mid 4
4 3/4

South 3 7/8
4 3/4



Monitor Word 160 BK in
157 FILL in

See pg 7 for detail

Note: 155 Fill-in - Roured
@ Sept 94. 3/4" out
on Horiz alignment.

Buddy Burns

9 Sept-94
FM

before

after

North 23

22 1/2

M.D. string

0

South 23

22 1/2

I-beam

North 2 3/4

3 7/8

M.D. 2 3/4

3 1/2

South 2 3/8

3"



Member 162
159 bulk in
A.I.H in

S. Burns

12.500
Mort



100 11

Wash

Mid

Bar



I-beam below

offer

~~Wash~~ 4 5/8"

5 3/4"

~~Mid~~ 4 5/8"

5 3/4"

~~South~~ 4 1/2"

5 3/8"



23 Aug #

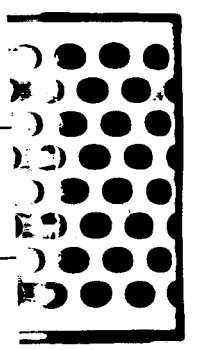
Job 93C0081
17th Street Canal
Floodwall

Monitor of Type I
Wall Mono 133 thru
Mono 162.
Contractor's phase III

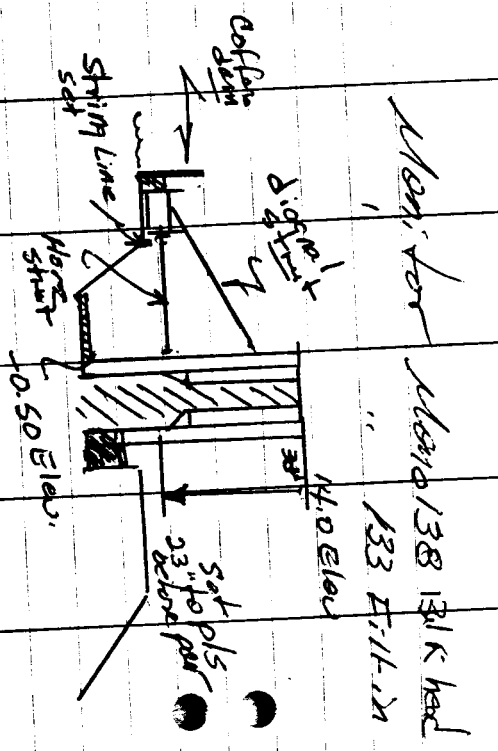
Harrison to Veterans
(CAB) ~~bank~~ bank
East bank

Monitor for I-beam
& verticle movement
of wall.

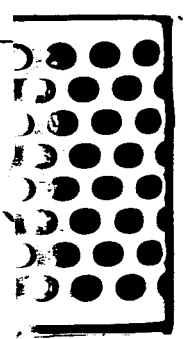
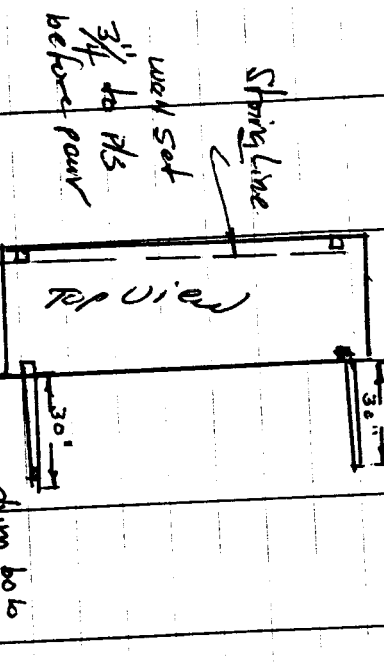
Budaly
Burn



7



Top view of Form



C. BUCUS

TUES
23 Aug 94

7

~~beam~~ I-beam
 before
 2 3/8"
 2 1/4"
 1 3/8"
 2 3/4"

~~beam~~ wall

before after

North 23 22 5/8

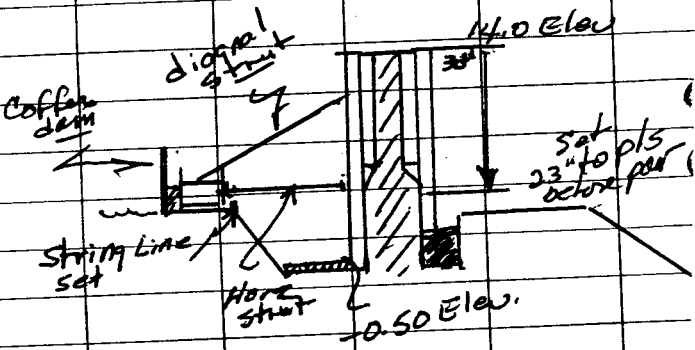
M.I.D. —

SOUTH 23 22 1/2

Monitor Memo 138 131 K h
 " 133 E.H.

C. BUCHS

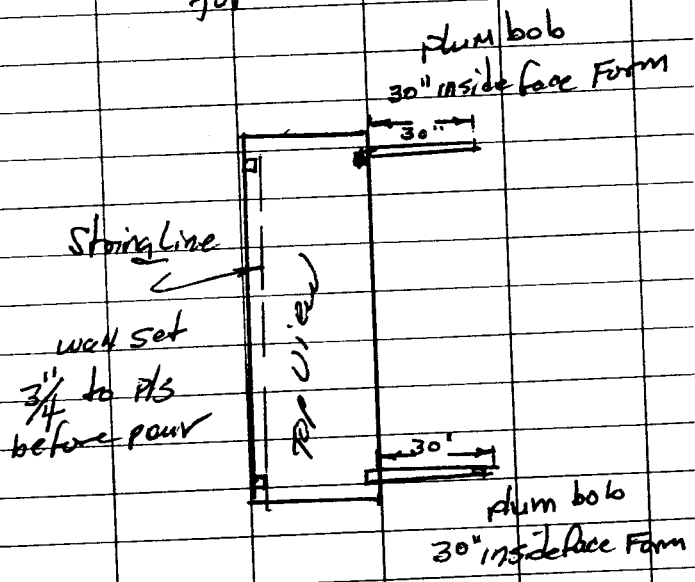
Tues
 23 Aug 94



~~West~~ I-beam

	before	after
North	2 3/8	3 1/4
Mid	2 1/4	3"
South	1 7/8	2 3/4"

Top view of form



~~East~~ Wall

	before	After
North	23	22 5/8
Mid	-	-
South	23	22 1/2

Monitor Mono 140 Bultha
" " 135 Fill-in

C. Burns

wed
24 Aug 94

See pg 7 this book
for detail

Wall 140		
	before	After
North	23"	22 ³ / ₈ "
Mid	-	
South	23"	22 ¹ / ₂ "

I-beam 140		
	before	after
North	3"	3 ¹ / ₂ "
Mid	2 ³ / ₄ "	3 ¹ / ₂ "
South	2 ¹ / ₄ "	3 ¹ / ₂ "

9

Monitor mono 147 Bulkhead
4 13/8 Fill-in

C. Burns

25 Aug 94 9

See pg 7 of this book
for details

	before	After
NO	23 1/4" ^{up 11"}	22 5/8"
Mid Line	^{string}	0
SD	23 1/4"	22 1/2"

	I-beams before	After
NO	1 3/8"	2" =
Mid	1 3/8"	1 3/4" =
SD	1"	1 1/2" =

Monitor Mono 144 Bl. C. Burns 26 AUG 94
 " 139 Fil.

see pg 7 413 book
 for detail

	Wall before	after
North	$23\frac{1}{4}$	$22\frac{1}{2}$

	string line F1 STOP	
--	---------------------------	--

South	23	$22\frac{3}{8}$
-------	----	-----------------

	I-beam before	After
North	3"	$3\frac{1}{2}$ "

Mid	$3\frac{1}{4}$ "	4"
-----	------------------	----

South	$3\frac{3}{8}$ "	$4\frac{1}{4}$ "
-------	------------------	------------------

Monitor Mound

148 BK
143 Fill.

C. Burns

29 Aug 94

see pg 7 for book
for detail

	before wall	After
North	23	22 ³ / ₈
Mid		
South	23	22 ⁵ / ₈

	before I-Becum	After
North	3 ¹ / ₈ "	3 ¹ / ₂
Mid	2 ⁷ / ₈ "	3 ¹ / ₈
South	2 ¹ / ₂	2 ¹ / ₈

Monitor No 150 Bulk H/C Burns

Thurs
1 Sept 94

See pg 7 this book
An detail

Wall

Northy 22 7/8 22 1/2

Mid string
chamber

Southy 23" 22 1/2

Elev I-beam

TBM	before Elev	After Elev	Elev		I-beam lateral movement	
	Hi.				before	after
	1.54	7.77	6.23			
	3.14	3.14 4.63	3.14	Northy	2 3/4	3 1/4
	2.97	3.00 4.80	3.00	Mid	3 1/4	4"
	3.05	3.08 4.72	3.08	Southy	4 1/4	4 3/4
1 TBM			1.54			
			6.23			

Monitor Wood 152 Blkd

C-Burr

Fri
2 Sept 94

See pg 7 this
book for detail

	Wall	
	before	
North	23"	22 1/2"
Mid	string 3/4"	0"
South	23	22 1/2"

	I beam	
	before	after
North	6 3/4	7 3/8
Mid	7 1/2	8 1/4 = 3/4"
South	8 1/8	9 1/4 =

14

Mon, Tex / Mon

154 Blk
151 All

O. Burns

Tues
6 Sept 94

14

See pg 7 this book
for detail

	Wall	
	before	
North	23"	22 1/2"
	Mid string	
	line	
South	22 7/8"	22 1/2"

	I beams	
	before	after
North	3 1/2"	4 1/4"
Mid	3 1/8"	4"
South	2 1/2"	3 3/8"

15

Monitor Nov 156 C Burns

wed
7 Sep 94

15

Wall
before
North 23" 22 1/2"
Mid string
line
South 23 1/4" 22 5/8"

see pg 7
for detail
this book

T-beam
before
North 1 1/8" 2 1/8"
Mid 1 3/4" 3"
South 2 1/8" 3 5/8"

Monitor	Mon	158 D.
"	"	155 D.

C. BURNS
 8 Sept 94

THURS

See pg 7 this book
 for detail

Wall		
North	23 1/4	22 5/8
Mid string		0
South	23 1/8	22 9/16

I. beam
 below

North	3 7/8	4 5/8
Mid	4"	4 3/4
South	3 7/8	4 3/4

17

Monitor Nord 160 BA
157 FI

Buddy Burns

9 Sept 94
Fri

17

see pg 7 for detail

before

after

Wall

Northern 23

22 1/2

note: 155 fill-in power
8 Sept 94. 3/4" out
on Horiz alignment.

mid string
Eye

0

Southern 23

22 1/2

I-beam

Northern 2 3/4

3 1/8

mid 2 3/4

3 1/2

Southern 2 3/8

3"

Monitor 162 bulkhd
159 AITM

G. Burns

12 Sept
mon

wall

worky

mid

South

I-beams before

after

worky	4 1/8	4 1/8	4 5/8"	5 3/4"
mid	4 1/8	4 1/8	4 5/8"	5 3/4"
South	4 1/8	4 1/8	4 1/2"	5 5/8"

93C-00B1

Monitor of Walls
17th Street Canal

A. E.
Buddy Burns

Monitor I-Beam Fls
of wall Memo # 94

1st TK

Note: Contractor
set form 1/4" TO Fls
before pour to allow
for movement to Fls

nd TK

Note: Used 1/4" set back
from 0" Measured from
there with instrument

3rd TK After adjustment

C. Burns
11 July 94

North

Mid

South

1/2"
TO Fls

1/4"
TO Fls

3/8"
TO Fls

1/8"
TO Fls

1"
TO Fls

1 1/2"
TO Fls

1/8"
TO Fls

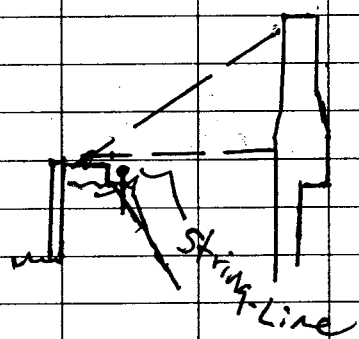
1 1/2"
TO Fls

1 1/4"
TO Fls

11

Monitor of Memo 94
 Before & After removal
 of Forms. Measurement
 taken with instrument
 with point set on cap
 before any work done
 in breaking forms

I-beam Movement Pk
 Wall ± ~~94~~ 94 string
 Line set Pk of I-beam.
 2" x 4" on each end independent
 of all activity



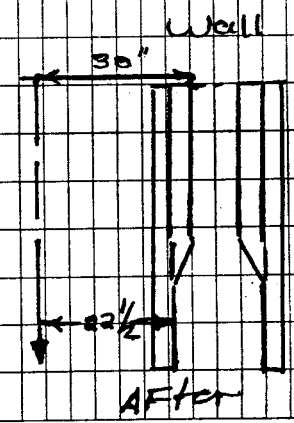
C. Burns ~~Tue~~ ~~12~~ July 94 11

Facin alignment
 wall

	Before	After
North	0"	0 1/4"
Mid pt	0"	0 1/8"
South	0"	0 1/4"

I-beam

	Before	After
North	0"	1/2"
Mid	0"	1 3/4"
SO	0"	2"



Monitor Mon 98
 Before & After placing
 of concrete. All
 Measurement done with
 instrument (same as
 page 11)
 NO Form change
 Made this date.

I-beam

	ht.	ppd before	6.20 ppd After
TBM	1.72	792	6.20
S	S	3.81	3.82
M	M	3.59	3.61
N	N	3.37	3.38

C. Burns

13 July 97
 Wed

I-Wall		Before	After
No end	0	0	0
Mid	0	1/8	
SO end	0	1/8	

I-Beam Alignment		Before	After
No	0	5/8"	
Mid	0	1/2"	
SO	0	3/4"	

Elev		Before	After
S	4.11	4.10	
M	4.33	4.33	
N	4.55	4.55	

Monitor Model 100
After completion
of pour with
adjustment

C. Burns

Thurs
14 July 94

π used to check line
on gap before & after
before After

North 0 5/16 P/s

Mid 0 5/16 P/s

South 0 1/2 P/s

I-beam
before

After

North 0

Mid 0

SO 0

1"

3/4"

14

Monolith #102 Monitor
 For alignment using plumb
 bob from Form &
 shooting line with T

C. Burns

15 July 94

T @ 100 #15 101

alignment of wall
 before after adjustment

North $\frac{1}{2}$ " plumb $\frac{1}{4}$ " $\frac{1}{8}$ "

Mid $\frac{1}{2}$ " plumb $\frac{1}{4}$ " $\frac{1}{8}$ "

South $\frac{1}{2}$ " plumb $\frac{1}{4}$ " $\frac{1}{16}$ "

Monitor I-beam

TBM 1.64 790 6.26

alignment I-beam
 before after

rod before elev After elev
 N 3.23 4.67 N 3.25 4.65

M 3.62 4.28 M 3.63 4.27

S 3.96 3.94 S 3.96 3.94

North $\frac{1}{2}$ " $1\frac{5}{8} = 1\frac{1}{2}$

Mid $\frac{1}{4}$ " $1\frac{1}{8} = 1\frac{1}{2}$

SO $\frac{3}{4}$ " $1" = \frac{1}{4}$

TBM 1.64 6.26

Monitor Mound # 104
For Plumb

C Burns

18 July 94
Mon.

note: Contractor poured
 FLS Leg from -0.50
 TO top of dry bottom
 @ 11:30 AM completed @
 12:00 AM. Let concrete
 set until 3:00 PM.
 Then completed pour
 TO top of Monolith @
 Elev 14.00. There was
 some movement during
 pour & from dry
 bottom to top. (very
 little $\frac{1}{2}$ " on North
 end & $\frac{1}{2}$ " on South
 end. Normal Form setting
 was used other than
 pouring 1st 4.0' on FLS
 and pouring remaining
 @ wall 3.0 hrs later.

	T @ 100	FLS 101	19 Jul
before			
South $\frac{1}{2}$ "			$\frac{1}{4}$
Mid $\frac{1}{2}$ "		0	0
North $\frac{1}{8}$ "		0	0

Mound 104 accepted
 19 July 7:30 AM

Check for alignment &
Plumb Along # 108 1.

C. BUKUS
21 July 94

I-beam

North

Mid

South

Rain
eliminated part
of this moisture

Wall
before

North 5"

Mid 5 1/4"

South 5"

Alignment ± Plumb
Memo # 108

21 July 94
D. Burns

K ⊙ 100 FLS ^{before} _{after} Scribe Mark 11

wall set from plumb	North	6 1/2"	6 1/2"
North = 0"	Mid	6"	6"
Mid = 0"	South	6 3/4"	6 3/4"
South = 0"			

TBM 1.14 N.I. 7.29 6.13

I-beam N.I. = 7.29

note 2 see sketch by contractor
of pouring this memo 108
dated 13 July 94. Channel
on back set 1/2" to FLS &
shims put between Form
& channel to hold Form
to plan dimension. Mr.
Roussel, consultant for
Pittman Const Co., on job site
monitoring pour.

with ^{rod} vent
Mid 2.602
So 2.510
before (string line) _{after}

North	3/4"	1 3/4"	1"
Mid	2 3/8 1 1/2"	2 1/2"	3/4"
South	1 7/8"	2 1/2"	5/8"

Rain prevented
start of pour.

Vertical alignment of
Mound # 106

This is Normal Pour
Meaning: Straps welded
to sheet pile @ ± 30"
spacing and channel welded
to straps to support bottom
of F/S Form @ plan
dimension.

	before	After
North	1" (23)	0" 22 1/2
Mid	1" (23)	1/6 22 3/4
South	1" 23	0" 22 1/2

	I-Beam before	After
North	3 7/8	4 3/4
Mid	4 1/8	4 1/8
South	4 7/8	5 3/8

Month # 110
2nd pour

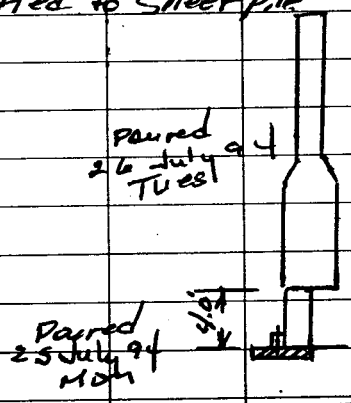
C. Burn ^{Tues} 26 July 94

Poured bottom - 0.50 to 3.50 on FLS 25 July 94. Form for FLS Left Standing. Completed pour from Elev 3.50 to Top Elev 14.0 FLS & PLS.

Contractor used 4-diagonal shunts from form to I-beam (kicker) other four in place but not used.

Contractor used bolts @ ± 30" intervals in cham drilled thru dry bottom to maintain back wall alignment. see detail. No straps tied to sheet pile.

	Wall before	after
North	0" (22 1/2)	1/8" 22 5/8
Mid	0" (22 1/2)	0" 22 1/2
South	0" (22 1/2)	0" 22 1/2



	I-Beam before	after
North	1 1/8	1 1/4
Mid	1"	3/4"
South	3/4"	1/2"

NO Movement was found upon removal of forms on Thurs 28 July 94. None accepted.

Monitor Memo # 112
 All form work moving
 as submitted.

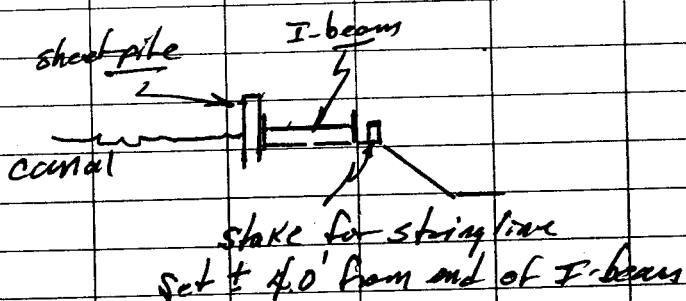
C. BURUS

Thurs
 28 July 94 20

Measurement made 8' from
 Top of Form on pls to
 Outside of Form, north,
 Mid & South end.

	Wall	before	After
No	1/2"	(22")	0"
Mid	1/2"	(23")	0"
SO	1/2"	(23")	0"

note stringline for I-beam set on pls
 of I-beam.



	I-Beam	before	after
No	1 1/4"	2 1/2"	= 3/4"
Mid	1 7/8"	2 3/4"	= 1 1/8"
So	2"	2 7/8"	= 7/8"

21

Monitor of Mono #117

C. Burns

29th July 94 21

notes 8.0 down from
 Top level 14.0' Measure
 23" before pour top
 set @ 30" from inside
 Face of Form on P/S.
 Plumb bob @ North &
 South end. string line
 set on P/S from north
 to south end 1/2" for
 chamber strip (Mid
 point)

~~Notes 1/2" down from (etc)~~
 Wall

	Before	After
North	23 ³ / ₈ "	22 ¹ / ₂ "
Mid	23 ¹ / ₄ "	22 ¹ / ₂ "
South	23 ¹ / ₄ "	22 ¹ / ₂ "

I-beam (Moved F/S)

North	7/8"	1 5/8"
Mid	1"	1 7/8"
South	1 1/4"	2 1/8"

22

Monitor of flow 88
will sta

C. Biens

1 Aug 94

22

All power off for this
power power line @
plant sta 35+85.

	Well	before	offer	2 AUG
()				
()	So	23 1/8	22 1/2	- 22 1/2
	NO	23 1/8	22 1/2	- 22 1/2

well accepted
0800 Tues 2 Aug 94

	J-Beam	before	offer
()	NO	2 1/8	2 3/4
()	Mid	2"	2 1/8
	So	2 1/2	3 3/8

Momiki 116 Pucstondr
(BuKhead

C Burns

5~~th~~ AUG 94
Fri

Wall before	
before	After
North 1" (23")	2 2 1/2
Mid 1" (23")	2 2 1/2
South 3/4" (22 3/4")	2 2 1/2

Stringline set on
~~the~~ east side of I-beam

Stringline	
I-beam before	After
North 2 3/4	2 3/4
Mid 2 1/2	3 1/4
South 2 3/8"	3 1/8

24

Mond 118 bullhead
" 112 fill in

C. BURNS

8 Aug 94

24

112 fill in set $\frac{3}{4}$ " to 4/s
use string line.

Wall NB
before after

North	2 $\frac{3}{8}$ "	2 $2\frac{1}{2}$ "
Mid	23	2 $2\frac{1}{2}$ "
South	23	2 $2\frac{1}{2}$ "

I-beam stringline set on
east side I-beam. (7/s)

I-beam NB
before after

North	$1\frac{1}{2}$ "	2 $\frac{5}{8}$ "
Mid	2"	2 $\frac{7}{8}$ "
South	2 $\frac{1}{4}$ "	2 $\frac{3}{4}$ "

120 bulkhead
115 fill-in

C. Burns

Tues
9 Aug 94

Fill-in checked with
string line set @
chamber $\frac{3}{4}$ ' @ mid-
pt. to p/s.

Wall
before

north	23'	22 $\frac{1}{2}$ "
mid	23'	22 $\frac{1}{2}$ "
south	23'	22 $\frac{1}{2}$ "

I. Burns
before

north	17 $\frac{1}{8}$ "	2 $\frac{1}{16}$ "
mid	17 $\frac{1}{8}$ "	2 $\frac{5}{8}$ "
south	2 $\frac{1}{4}$ "	2 $\frac{1}{8}$ "

Mono Bulkhead 124 C. Burns
Fill-in 119

Mons
11 Aug 94

Fill-in Measurement @
Mid-point 3/4" to
P/S with string line.

	Mons 124	
Up before		
Start 23 1/8		22 1/2
Mid 23		22 1/2
Start 23 1/8		22 1/2

	Mono 124
I-beam before	
Start 7/8" 1 5/8"	
Mid 1 1/8" 2"	
Start 1 1/8" 2 1/4"	

28

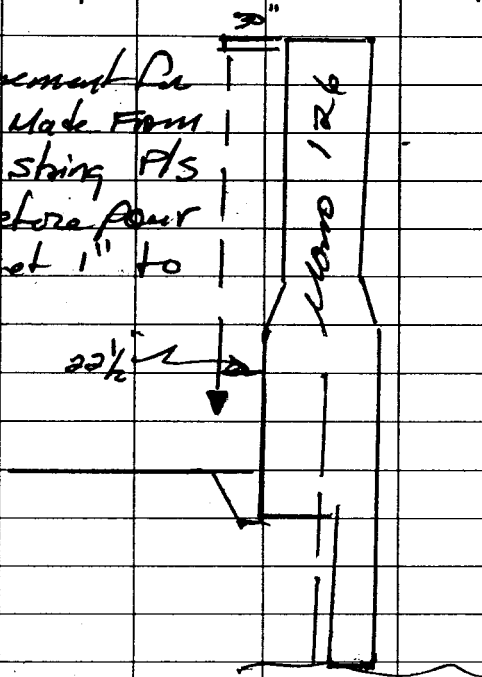
Mono 126 Bulkhead
" 121 All-in
Pls Fls

B. Burns

Pi
12 Aug 94

28

Measurement Pls
plumb Made Form
plumb string Pls
23" before pour
wall set 1" to
Pls.



	Mono 126 Wall before	After
top	23 1/8	22 1/2
Mid		
bottom	23 1/8	22 1/2

	Mono 124 I-beam before	After
top	3"	4"
Mid	3 1/8"	3 7/8"
bottom	3 1/8"	3 5/8"

29

Monolith Bulkhead 128 G. Burns
~~Fill-in~~ 130

1001
15 Aug 97

29

~~Fill-in~~



Monolith 128
Wall before after
North 23 22 1/2
Mid 23 22 1/2
South 22 1/8 22 1/2

I-beams
before
North 1 3/4 2 1/8
Mid 1 1/2 2
South 1 1 5/8