

# The Board of Levee Commissioners

OF THE

## Orleans Levee District

A 0001839

200 WILDLIFE AND FISHERIES BUILDING  
418 ROYAL STREET

New Orleans, La.  
70130



# EMERGENCY OPERATION PLAN

## 1972

BOARD OF LEVEE COMMISSIONERS  
OF THE  
ORLEANS LEVEE DISTRICT

EMERGENCY OPERATION PLAN

The City of New Orleans is protected by an extensive flood protective system approximately 121 miles in length, consisting of earthen levees, I-wall levees and tee-type floodwalls (See Plate A). There are 49 flood gates in the presently designed system of which 41 are in operation at this time (See Plate B). Six (6) stop-log installations will provide interim protection where gates are proposed. In addition, 2 other stop-log installations provide high-water protection where no gates are planned.

Keeping in mind that flood protection is a year-round activity, and that emergencies due to high tides can occur at any time of the year, whereas hurricane emergencies are expected usually between June & November, we have divided the Emergency Operation Plan of the Board into three parts as follows:

- A Preparations & Surveillance
- B High Tide Emergencies
- C Hurricane Emergencies

Each part of the E.O.P. involves the different departments of the Board in varying degrees. The department titles for this report are as follows:

1. Engineering (Chief Engineer & Staff)
2. Operations & Maintenance (Field Office)
3. Field Engineers
4. Police
5. Orleans Marina
6. New Orleans Lakefront Airport
7. Purchasing & Distribution
8. Office Personnel (Engineering, Accounting & Personnel)

Activation and direction of any emergency shall be subject to control as follows:

1. Chief of Operations - Board President
2. Director of Operations - Chief Engineer
3. Field Operations - Asst. Chief Engineer & Lakefront Superintendent III
4. Administrative Operations - Executive Administrator

The above listing delineates the chain of authority to be followed. In the event any line of command is absent for any reason, his authority is passed on to the

next line of command.

The person responsible for the implementation of any phase, part or detail in the following plan shall be the respective department head, supervisor or manager. In some instances other names will be inserted in the plan directly.

Attached hereto are several displays which are an integral part of the plan. They are listed below.

1. Plate A - Levee map of City
2. Plate B - Floodgate locator map
3. Plate C - Lakefront strip map
4. Schedule A - Emergency Contact Roster
5. Schedule B - Floodgate Data
6. Schedule C - Miscellaneous Data

The three (3) parts of the plan as mentioned above are presented in detail as follows:

A. PREPARATION & SURVEILLANCE

Because New Orleans is located between Lake Pontchartrain and the Mississippi River and is exposed on its eastern flank to tidal fluctuations from the Gulf of Mexico, it is easy to see the year round necessity for constant inspection of the flood protective system as well as vigilant observation of conditions and circumstances that could forewarn us of an emergency. In addition, a line of communications with all interested agencies and affected companies is necessary to effectively coordinate this or any plan. (See Schedule A).

Under Part A departmental activity is as follows:

1. ENGINEERING
  - a) Conduct inspection trip of system first week in May.
  - b) Update emergency contact roster (Schedule A) of all agencies and organizations May 1.
  - c) Initiate check of radio network KBQ242 to insure operational capability (Quarterly).
2. OPERATIONS & MAINTENANCE
  - a) Maintain monthly check of all floodgates, except that June thru October checks shall be weekly.
  - b) Perform periodic routine maintenance checks on all floodgates to insure operational capability.
  - c) Perform periodic maintenance checks on KBQ242 base station standby generator to insure operational capability

- d) Perform periodic maintenance checks and routinely exercise amphibians to insure operational capability.
  - e) Perform periodic maintenance checks to insure operation of sand-bag machine.
  - f) Perform periodic maintenance checks and routinely exercise all auxiliary electric generators.
  - g) Develop minimum stockpile of 10,000 plastic lined sandbags starting June 1. Begin movement to stockpile areas under Bayou St. John Bridge by July 1, or as directed by the Chief Engineer.
3. FIELD ENGINEERS
- a) Make yearly profiles of each levee
4. POLICE
- a) Familiarize all police personnel with flood protective system; i.e. locations of gates, levees flap gates and drain valves.
  - b) Maintain tide elevation log, reading tide gauge on Industrial Canal twice daily. Notify Engineering when tide reaches 2.0 msl (mean sea level) and is rising.
  - c) Make check of all emergency equipment needed, such as barricades, flares, lights, foul weather clothing, etc. etc. to insure availability when needed.
5. ORLEANS MARINA
- a) Maintain updated locator file of tenants and lessees.
6. NEW ORLEANS LAKEFRONT AIRPORT
- a) Maintain updated locator file of tenants and lessees.
  - b) Make check of emergency supplies required for minimum shelter operation; i.e. blankets, medical supplies, water containers and flashlights, preparing status report by April 1 to show items on hand, make requisitions for items needed.
7. PURCHASING & DISTRIBUTION
- a) Make stock check of emergency items, including sand bags, no later than April 1 reporting status to Engineering for reordering if required.
  - b) Refill butane tank of KBQ242 standby generator by May 15
  - c) Make arrangements with Airport Restaurant to utilize kitchen

and equipment to prepare food in emergencies

8. OFFICE PERSONNEL

- a) Personnel Department shall maintain updated locator file of all Board personnel for use in any emergency

B. HIGH TIDE EMERGENCIES

At any time of the year prolonged southeasterly winds can raise tide elevations alarmingly in a very short time. Without routine tide elevation checks to alert us to this danger it would be possible for rising tides to enter into the City through some low sill elevation floodgates. These gates are marked as such on Schedule B and deserve our special attention.

Under Part B departmental activity is as follows:

1. ENGINEERING

- a) Acting on information in tide elevation log implement Part B
- b) Dispatch staff members to assess situation
- c) Notify Operations & Maintenance of emergency and its location
- d) Coordinate gate closing with affected agency or company

2. OPERATIONS & MAINTENANCE

- a) Dispatch crew/crews as needed to control emergency

3. POLICE

- a) Make personnel available to perform duties as required

4. ALL OTHER DEPARTMENTS

- a) No action required unless called upon

C. HURRICANE EMERGENCIES

From the time a hurricane is spawned as a wave in the tropics, its path is plotted in our office from reports and bulletins supplies by the weather teletype. The plotting board has three semi-circles indicating distance from New Orleans; i.e. 750 miles, 500 miles and 250 miles colored yellow, orange and red respectively designating the different alert conditions under which this Board will function during an emergency.

1. YELLOW ALERT - 750 MILES

When a hurricane passes this line, its final destination is still impossible to predict. If plots indicate a possibility of its coming our way, the various departments are affected as follows:

- a) Engineering
  - 1) Implement Part C of E.O.P.
  - 2) Continual monitoring of teletype, updating plots as information is received
- b) Operations & Maintenance
  - 1) Initiate re-check of all facilities needing storm covers, insuring ready availability of material (See Schedule C)
  - 2) Initiate vehicle check to insure operational capability
- c) All Other Departments
  - 1) Maintain normal operation under this condition

2. ORANGE ALERT - 500 MILES

When a hurricane passes this line and has coordinates that indicate a probability of its striking somewhere along the northern Gulf Coast, the various departments are affected as follows:

- a) Engineering
  - 1) Maintain monitoring of weather teletype
  - 2) Inform all Board personnel of possible hurricane condition within 36 to 48 hours, requesting employee to keep supervisor informed of whereabouts. All leaves are cancelled until further notice
  - 3) Notify Pontchartrain Beach of possible hurricane condition
- b) Operations & Maintenance
  - 1) Initiate additional gate check for operational capability, securing gates scheduled for advanced closing
  - 2) Install mobile radios in amphibious vehicles
  - 3) Initiate check of all gravity drains through levees, noting flap gate condition
  - 4) Initiate check of all drain valves along floodwalls to insure accessability
  - 5) Make preparations to move stop-logs to installation location, posting guard if movement is decided upon
  - 6) Install storm covers as per Schedule C.
  - 7) Deploy generators and set-up for future operation as per Schedule C

- 8) Initiate action to secure light towers at Pontchartrain Beach
- c) Orleans Marina
  - 1) Initiate survey of boats in harbor noting obvious problems and informing their owners of them
- d) New Orleans Lakefront Airport
  - 1) Initiate survey of Airport noting problem areas if hurricane should come and informing the tenants or field office of them
- e) All Other Departments
  - 1) Maintain normal operation under this condition unless needed to perform some duty

3. RED ALERT - 250 MILES

When a hurricane passes this line and is predicted to come on shore in our vicinity we could expect gale force winds shortly. All hurricanes have winds that precede them in varying degrees. Gale force winds (45 - 74 mph) could extend out 150 to 250 miles in advance, while hurricane force winds (75 mph plus) have been known to extend out up to 90 miles in advance of the eye. For that reason final preparations must be completed within 8 to 12 hours of the imposition of a red alert depending on forward speed and distance that winds precede the hurricane. All personnel having to use the radio are cautioned to avoid unnecessary conversation. When calling, talk slowly, softly, and to the point, so as to avoid repeating call and cluttering the air; an emergency call may be held up that way. Departments operate as follows:

- a) Engineering
  - 1) Chief Engineer (McNamara) shall notify all Board personnel of an imminent hurricane condition within 15 to 25 hours and to begin operations under red alert condition
  - 2) Chief Engineer (McNamara) shall establish 24 hour control center utilizing office personnel as follows:

In each command post personnel will be needed to monitor radio and telephone calls. Ideally there will be three (3) eight (8) hour shifts needed for an indefinite number of days with a minimum of two (2) people per shift. Hours may vary due to availability of personnel.

Listed below are the different command posts and personnel roster for each post.

(a) Main Operation Command Post (Airport Administration Bldg.)

- (1) L.G. Cashion
- (2) C.B. Becnel Jr.
- (3) W.M. Shean
- (4) J.C. Winkler
- (5) W.J. Ronan
- (6) J.A. Dantoni
- (7) R.J. Sutton
- (8) L.A. Paload
- (9) L.J. Lasseigne
- (10) R.D. Harris
- (11) M.J. Adams
- (12) M.K. Ettinger

(b) East Bank Command Post (Main Office)

- (1) S.F. McReynolds
- (2) G.J. Calvert Sr.
- (3) C.F. Fairleigh
- (4) P.G. Russell
- (5) C.O. Dietrich
- (6) J. Ogden
- (7) D.L. Borbert
- (8) E.W. Zimmer

(c) West Bank Command Post (1400 Brooklyn St.)

- (1) C. A. Gatewood
- (2) S.L. Teal
- (3) C.M. Ramagoz

- 3) Asst. Chief Engineer (Bodet) shall initiate coordination for final gate closing schedule
- 4) Chief Engineer (McNamara) shall establish Civil Defense Command Post. The City of New Orleans main Civil Defense Center is located between Pontchartrain Blvd. and West End Blvd. two (2)



blocks south of Robert E. Lee Blvd. The Board has a radio installation in the center with a remote connection in support Room No. 9 which we share with the Dock Board. Any activity needing coordination with Civil Defense should be directed to this Command Post. There will be three (3) shifts as in other command posts, however, only one (1) person is required per shift. The personnel manning this post are as follows:

- (a) C.W. Smith
- (b) B.J. Gabriel
- (c) J.M. Poppiti
- (d) G.C. McGovern

b) Operations & Maintenance

- 1) Lakefront Superintendent I (Tranchant) shall move all stop-logs and sand bag supply as required to installation locations posting guard and await word to begin (See Schedule B & C)
- 2) Lakefront Superintendent III (Darby) shall insure availability of personnel to complete gate closing schedule upon notification
- 3) Lakefront Superintendent II (Mauterer) shall move equipment to Vehicle Deployment Area (Leon C. Simon Drive next to U.S. Army Reserve Center) unless instructed otherwise by the Chief of Operation.
- 4) Lakefront Superintendent III (Darby) shall be prepared to begin installation of storm protective covers upon notification by Chief of Operations at Orleans Marina, Lake Vista Community Center & Seabrook Bridge Control Cab and upon notification by Airport Director at N.O. Lakefront Airport control tower cab (See Schedule C)

c) Field Engineers

- 1) Zack Jones shall utilize his people to assist in gate closing activity
- 2) Zack Jones shall maintain surveillance of drain valves, closing them when notified or if flood waters begin infiltrating lines

d) Police

- 1) The Security Chief (Bliss) shall inform all personnel that a standby condition exists but normal duty rosters shall be maintained until notified
- 2) The Lieutenant on the watch shall make a check of emergency equipment so that it can be checked out of stock as required.
- 3) All directives concerning locations of barricades, road closings, guard patrols or guard posts will be issued by either the Chief of Operations (LeMieux) or Director of Operations (McNamara)

e) Orleans Marina

- 1) The Marina Manager (Cerise) shall notify all boat owners of impending hurricane and suggest their inspection of boat moorings
- 2) The Marina Manager (Cerise) shall begin securing all loose gear, requesting help from Field Operations (Bodet) at this time if needed

f) New Orleans Lakefront Airport

- 1) The Airport Manager (Jones) shall notify all tenants of impending hurricane and attempt to insure inside storage for all aircraft.
- 2) The Asst. Airport Manager (Weld) shall direct Supervisor ACGT (Lasseigne) to begin securing all loose gear; requiring tenants to police their area. If additional personnel are required to perform this duty, contact Field Operations (Bodet) for assistance
- 3) All Airport personnel shall be considered available for duty in Main Operation Command Post as previously listed under Part C, 3, (a), 2) (a)
- 4) The Asst. Airport Manager (Weld) shall establish emergency shelter to handle evacuees in the event Airport is used as evacuation center.

g) Purchasing & Distribution

- 1) The Purchasing Manager (Smith) shall make provisions for 24 hour operation in his department.
- 2) The Purchasing Manager (Smith) shall establish contact with food distributors to provide meals for workers and/or volunteers as

required. A confirmed positive source of food; i.e. sandwiches, soft drinks, hot coffee shall be arranged.

h) Office Personnel

- 1) Be available to man positions in OLB Control Center or Civil Defense Center as previously outlined in Part C, 3, a) 2) & 4).

4. HURRICANE STRIKES

All activities should have been completed prior to its onset so that personnel can seek safe shelter. During this time we should be preparing to meet emergency conditions as reported to us or observed by our personnel. Radio activity should be kept to a minimum, dispensing with unnecessary conversation.

5. AFTERMATH

- a) The Chief of Operations (LeMieux) shall direct that a complete check of entire flood protective system be made to verify levee integrity and assess damage
- b) Maintain gates in closed position until notified by Chief of Operations (LeMieux) and NO ONE ELSE
- c) Intensify monitoring of tide elevations because of possible tidal back-lash, reporting immediately any erratic behavior of tides.
- d) Begin work of repairing damage to flood protective system

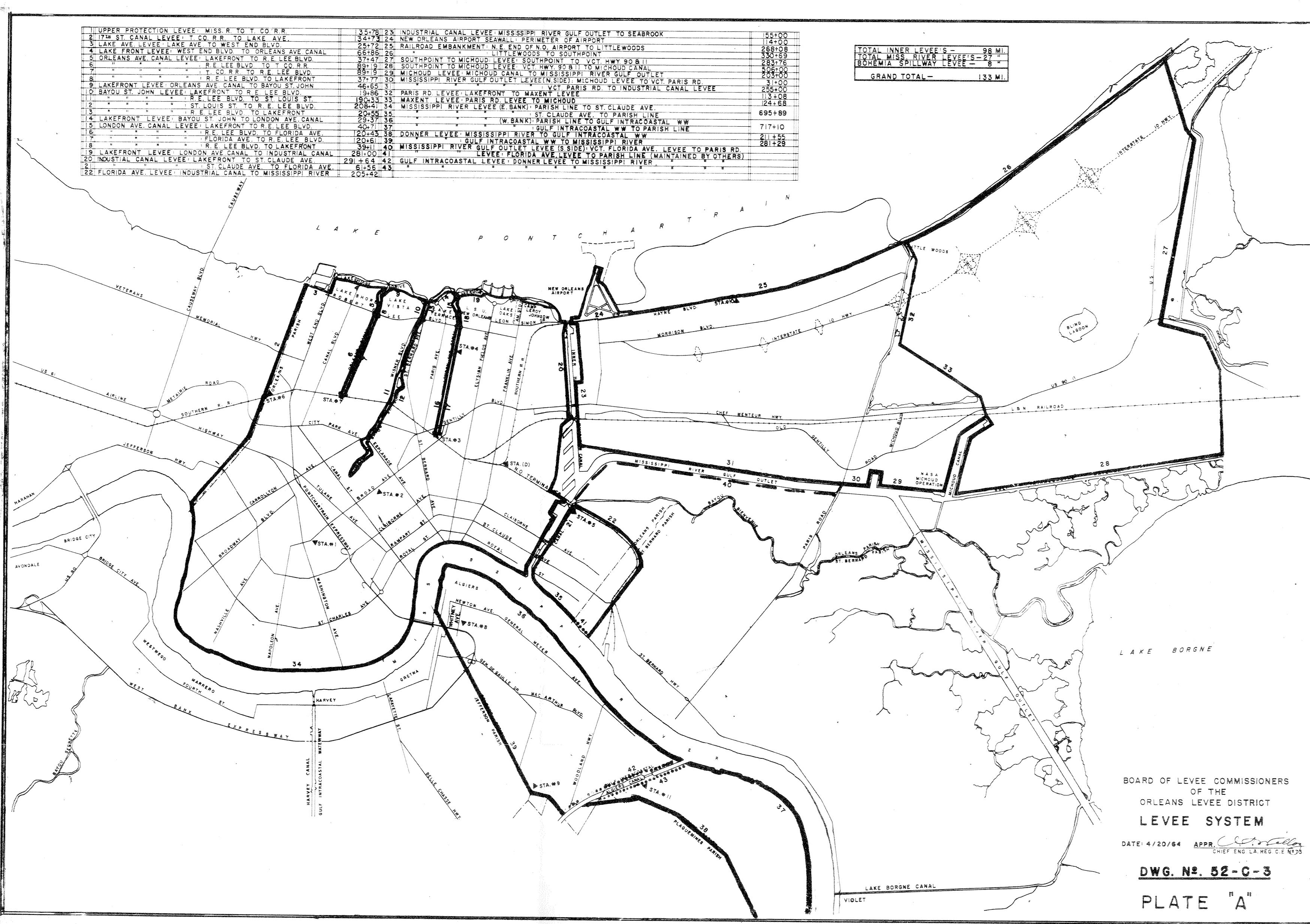
KEY PERSONNEL ROSTER

| POSITION              | NAME                    | HOME PHONE | BUSINESS PHONE       | RADIO CALL SIGN |
|-----------------------|-------------------------|------------|----------------------|-----------------|
| President             | Guy F. LeMieux          | 367-2949   | 523-5042<br>835-7255 | Unit 1          |
| Chief Eng.            | John P. McNamara        | 866-8814   | 523-5042             | Unit 5          |
| Exec. Admin.          | George J. LaBreche      | 283-5085   | 523-5042             | Unit 9          |
| Asst. Chief Engineer  | Lawrence G. Bodet       | 362-7101   | 523-5042             | Unit 10         |
| Lkft. Supt. III       | A. J. Darby             | 947-4100   | 245-1790             | Unit 2          |
| Lkft. Supt. II        | Arthur E. Mauterer      | 242-6304   | 245-1790             | Unit 3          |
| Lkft. Supt. I         | Gerald Tranchant        | 887-4984   | 245-1790             | Unit 7          |
| Marina Manager        | Joseph F. Cerise        | 482-2264   | 288-2351             | Unit 23         |
| Airport Manager       | Glynne M. Jones         | 283-5451   | 241-2161             | Airport         |
| Asst. Airport Manager | O. Kelly Weld (Slidell) | 643-9710   | 241-2161             | Airport         |

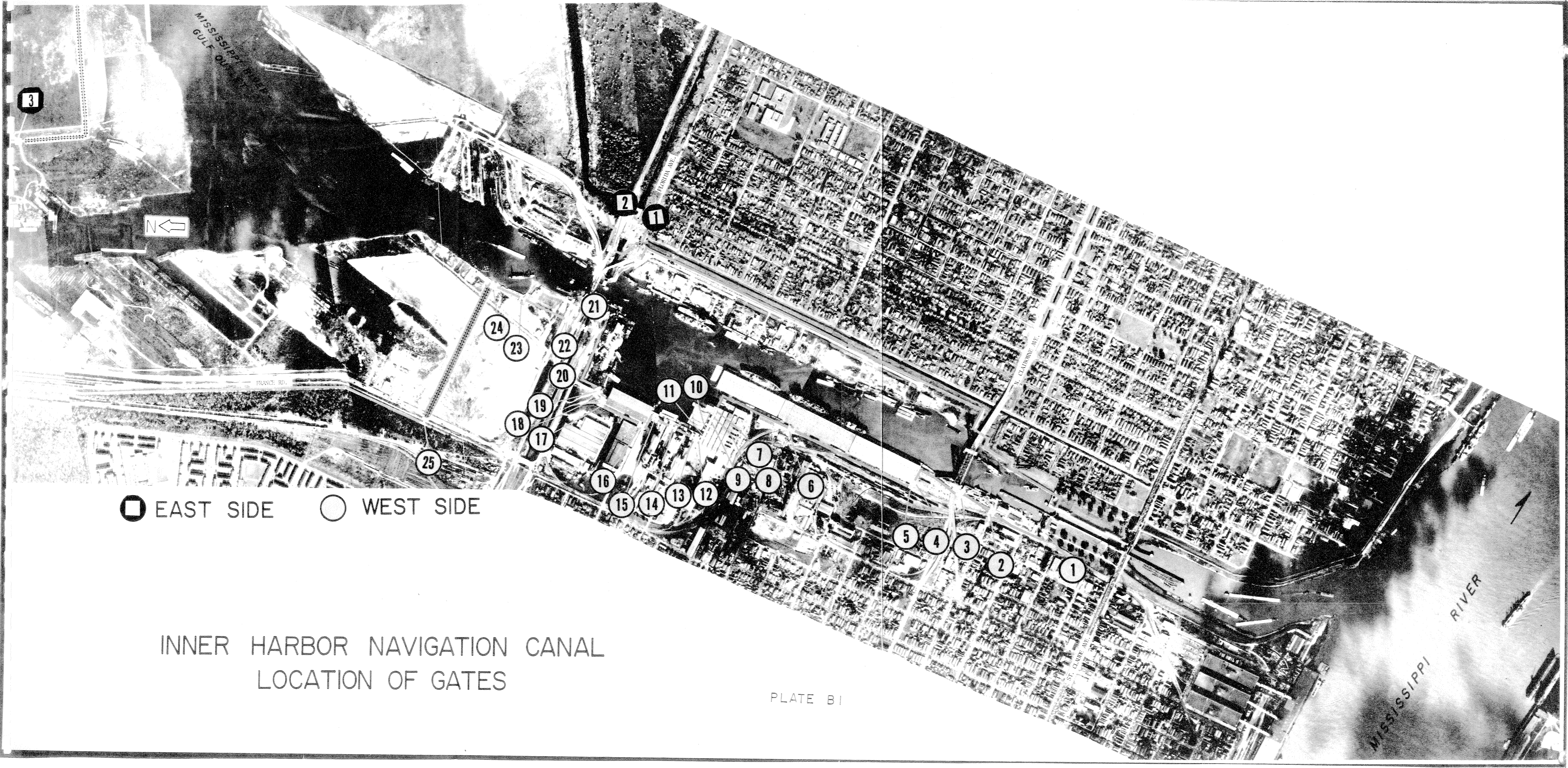
|                      |                   |          |          |              |
|----------------------|-------------------|----------|----------|--------------|
| Security Chief       | William A. Bliss  | 242-5104 | 241-1275 | 5950         |
| Purch. Mgr.          | Myrlin F. Smith   | 361-1870 | 245-1902 | Field Office |
| Personnel<br>Manager | Carolina W. Smith | 833-7586 | 523-5042 | Main Office  |

|    |  |        |    |  |        |
|----|--|--------|----|--|--------|
| 1  | UPPER PROTECTION LEVEE MISS. R. TO T. CO. R.R.           | 35+78  | 23 | INDUSTRIAL CANAL LEVEE MISSISSIPPI RIVER GULF OUTLET TO SEABROOK                   | 55+00  |
| 2  | 17th ST CANAL LEVEE T. CO. R.R. TO LAKE AVE.             | 34+73  | 24 | NEW ORLEANS AIRPORT SEAWALL PERIMETER OF AIRPORT                                   | 114+00 |
| 3  | LAKE FRONT LEVEE LAKE AVE TO WEST END BLVD.              | 25+72  | 25 | RAILROAD EMBANKMENT N.E. END OF N.O. AIRPORT TO LITTLEWOODS                        | 268+08 |
| 4  | LAKE FRONT LEVEE WEST END BLVD TO ORLEANS AVE CANAL      | 66+86  | 26 | LITTLEWOODS TO SOUTHPOINT  | 330+69 |
| 5  | ORLEANS AVE CANAL LEVEE LAKEFRONT TO R.E. LEE BLVD.      | 37+47  | 27 | SOUTHPOINT TO MICHOUDE LEVEE SOUTHPOINT TO VCT HWY 90 B 11                         | 283+76 |
| 6  | " " " " R.E. LEE BLVD TO T. CO. R.R.                     | 89+9   | 28 | SOUTHPOINT TO MICHOUDE LEVEE VCT HWY 90 B 11 TO MICHOUDE CANAL                     | 506+00 |
| 7  | " " " " T. CO. R.R. TO R.E. LEE BLVD.                    | 89+19  | 29 | MICHOUDE LEVEE MICHOUDE CANAL TO MISSISSIPPI RIVER GULF OUTLET                     | 203+00 |
| 8  | LAKEFRONT LEVEE ORLEANS AVE CANAL TO BAYOU ST. JOHN      | 37+77  | 30 | MISSISSIPPI RIVER GULF OUTLET LEVEE (N. SIDE) MICHOUDE LEVEE TO VCT PARIS RD.      | 31+00  |
| 9  | BAYOU ST. JOHN LEVEE LAKEFRONT TO R.E. LEE BLVD.         | 46+63  | 31 | PARIS RD LEVEE LAKEFRONT TO MAXENT LEVEE   | 255+00 |
| 10 | " " " " R.E. LEE BLVD TO ST. LOUIS ST.                   | 19+33  | 32 | MAXENT LEVEE PARIS RD LEVEE TO MICHOUDE  | 113+08 |
| 11 | " " " " ST. LOUIS ST. TO R.E. LEE BLVD.                  | 208+41 | 33 | MISSISSIPPI RIVER LEVEE (E. BANK) PARISH LINE TO ST. CLAUDE AVE.                   | 24+68  |
| 12 | " " " " R.E. LEE BLVD TO LAKEFRONT                       | 20+55  | 34 | " " " " ST. CLAUDE AVE. TO PARISH LINE   | 695+89 |
| 13 | LAKEFRONT LEVEE BAYOU ST. JOHN TO LONDON AVE. CANAL      | 29+37  | 35 | " " " " (W. BANK) PARISH LINE TO GULF INTRACOASTAL WW                              | 717+10 |
| 14 | LONDON AVE. CANAL LEVEE LAKEFRONT TO R.E. LEE BLVD.      | 40+71  | 36 | " " " " GULF INTRACOASTAL WW TO PARISH LINE  | 211+55 |
| 15 | " " " " R.E. LEE BLVD TO FLORIDA AVE.                    | 120+43 | 37 | MISSISSIPPI RIVER TO GULF INTRACOASTAL WW  | 281+29 |
| 16 | " " " " FLORIDA AVE. TO R.E. LEE BLVD.                   | 120+61 | 38 | GULF INTRACOASTAL WW TO MISSISSIPPI RIVER  |        |
| 17 | " " " " R.E. LEE BLVD TO LAKEFRONT                       | 39+11  | 39 | MISSISSIPPI RIVER GULF OUTLET LEVEE (S. SIDE) VCT. FLORIDA AVE. LEVEE TO PARIS RD. |        |
| 18 | LAKEFRONT LEVEE LONDON AVE CANAL TO INDUSTRIAL CANAL     | 28+00  | 40 | LEVEE FLORIDA AVE LEVEE TO PARISH LINE (MAINTAINED BY OTHERS)                      |        |
| 19 | INDUSTRIAL CANAL LEVEE LAKEFRONT TO ST. CLAUDE AVE.      | 291+64 | 41 | GULF INTRACOASTAL LEVEE DONNER LEVEE TO MISSISSIPPI RIVER                          |        |
| 20 | " " " " ST. CLAUDE AVE. TO FLORIDA AVE.                  | 61+56  | 42 |  |        |
| 21 | " " " " FLORIDA AVE. TO INDUSTRIAL CANAL                 | 205+42 | 43 |  |        |
| 22 | FLORIDA AVE. LEVEE INDUSTRIAL CANAL TO MISSISSIPPI RIVER |        |    |  |        |

|                            |                |
|----------------------------|----------------|
| TOTAL INNER LEVEES -       | 98 MI.         |
| TOTAL MISS. RIVER LEVEES - | 27 "           |
| BOHEMIA SPILLWAY LEVEE -   | 8 "            |
| <b>GRAND TOTAL -</b>       | <b>133 MI.</b> |



BOARD OF LEVEE COMMISSIONERS  
 OF THE  
 ORLEANS LEVEE DISTRICT  
**LEVEE SYSTEM**  
 DATE: 4/20/64 APPR. *[Signature]*  
 CHIEF ENG. LA. REG. C.E. 4173  
**DWG. No. 52-C-3**  
**PLATE "A"**



3

2

11

21

24

23

22

20

19

18

17

11

10

7

9

8

6

16

15

14

13

12

5

4

3

2

1

■ EAST SIDE

○ WEST SIDE

INNER HARBOR NAVIGATION CANAL  
LOCATION OF GATES

PLATE B I



MISSISSIPPI RIVER  
GULF OF MEXICO

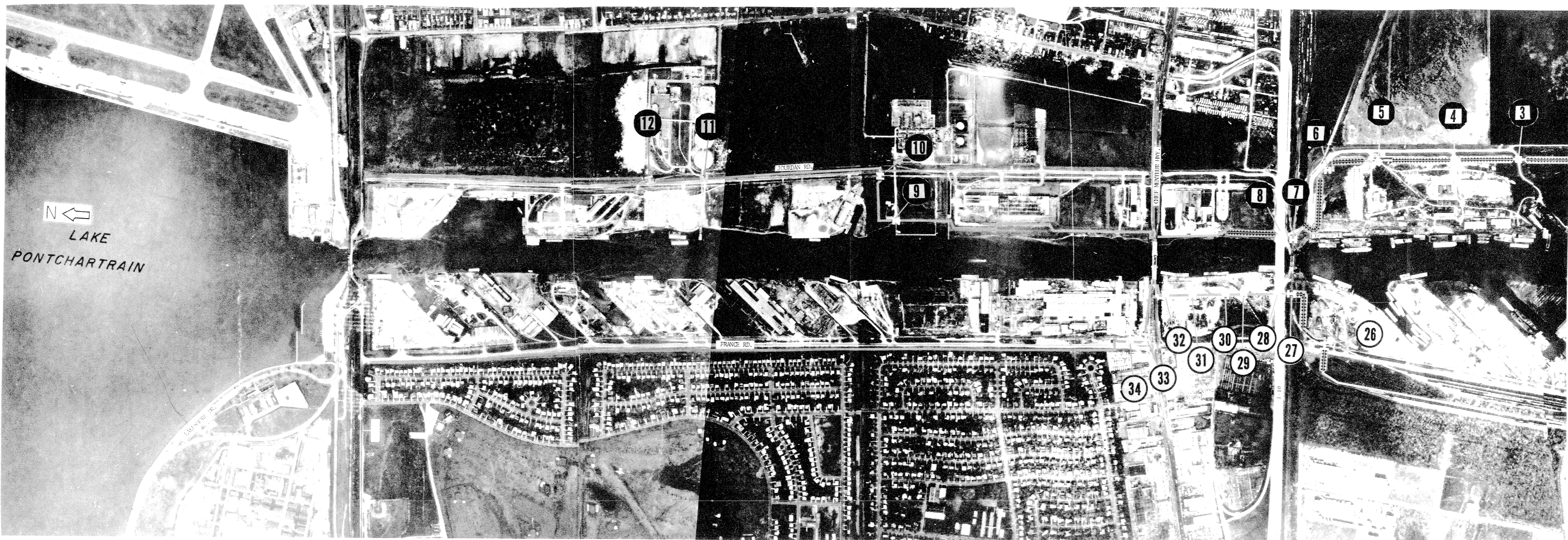
FRANCE RD.

FLORIDA AVE.

V. CLAIBORNE AVE.

ST. CLAUDE AVE.

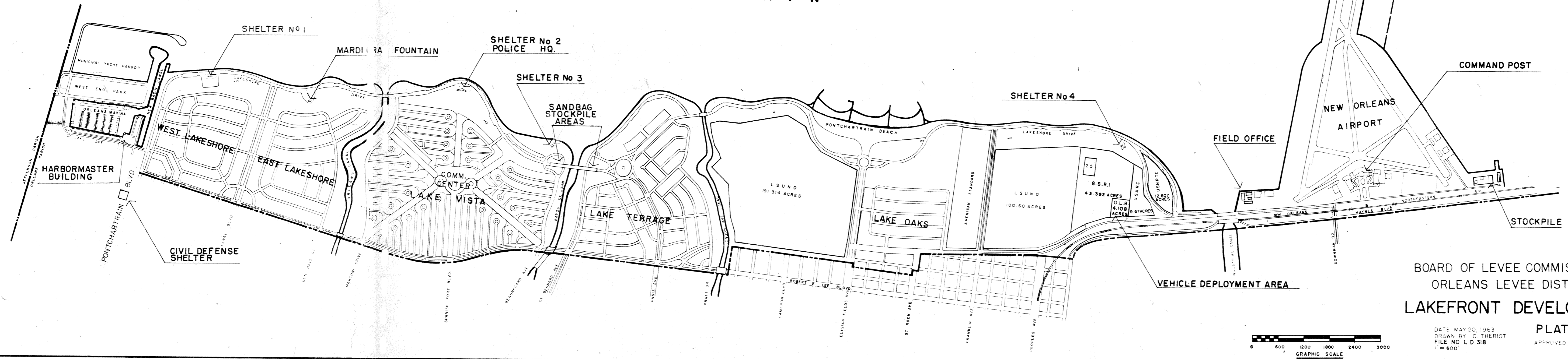
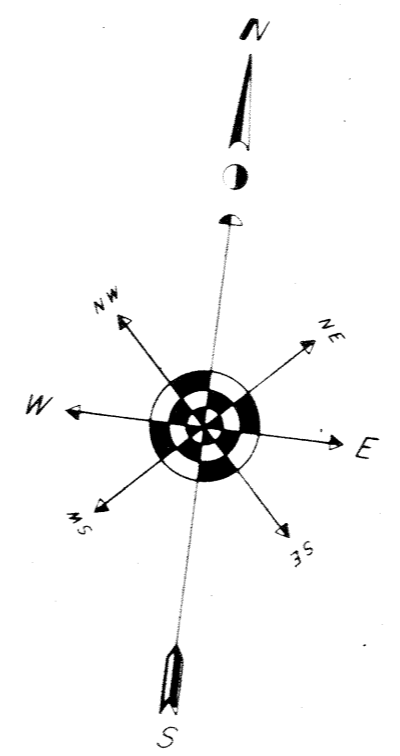
MISSISSIPPI RIVER



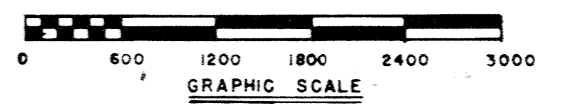
◻ EAST SIDE    ○ WEST SIDE

INNER HARBOR NAVIGATION CANAL  
LOCATION OF GATES

# L A K E P O N T C H A R T R A I N



**PLATE "C"**  
APPROVED: *[Signature]*  
CHIEF ENGINEER  
LA REG C 47 73



DATE: MAY 20, 1963  
DRAWN BY: C. THERIOT  
FILE NO: LD 318  
1" = 600'

10/2/63



24 HOUR CONTACT & ADDITIONAL PERSONNEL

| Gate Numbers                               | Agency or Company & Address  | Telephone    | Name  | Address  | Telephone  |
|--|--|--------------|---|--|--|
| E3, E4, E5 & E8                            | American Marine Corporation<br>Jordan Road & Almonaster Ave.         | 242-5200     | John R. Prunty*<br>Frank Riess<br>George Heffker<br>Joe Cain  | 6002 Chef Menteur Hwy., Apt. 242, N.O., La.<br>1844 State St., N.O., La.<br>539 N. Villere St., Chalmette, La.<br>P.O. Box 932, Picayune, Miss.  | 241-66<br>861-81<br>271-4555<br>318-798-4585   |
| N4, N5, N16<br>N18, N19, N1                | Board of Commissioners of the<br>Port of New Orleans                 | 522-2551     | Jerry C. Murray*<br>L.A. Spalluto   | 2216 Green Acres Rd., Metairie, La.<br>477 Lynncade Rd. Gretna, La.  | 887-33<br>362-85   |
| W34  | Equitable Equipment Corp.<br>4325 France Rd.                         | 947-0631     | J.T. Knight, Jr.<br>George Ventura<br>Harold Helmke<br>Hudson Bourgeois   | 4828 Cleveland Pl., Metairie, La.<br>4412 Congress Drive, N.O., La.<br>4516 Louisa Street, N.O., La.<br>2736 Athania Pkwy., Metairie, La.  | 887-3448<br>288-7952<br>282-04<br>833-01   |
| W13, W14, W15                              | Lone Star Cement Corp.<br>2315 France Rd.                            | 945-3171     | S.P. Latham*<br>Jack Malone<br>M.J. Lacour  | 13410 Dwyer Blvd., N.O., La.<br>7230 Cove Drive, N.O., La.<br>4774 Knight Drive, N.O., La.   | 254-0421<br>242-9615<br>242-57   |
| W29, W30, W31<br>W32                       | Louisiana Materials Corp.<br>Chef Menteur Hwy. & Indus. Canal        | 947-6681     | 24 Hour Dispatcher*<br>Richard Koen<br>Charles A. Hall<br>Douglas W. Bel  | Chef Menteur Hwy. & Indus. Canal<br>4652 Camelot Dr., N.O., La.<br>7611 Mayfair Place, N.O., La.<br>419 Stewart Ave., Harahan, La.   | 947-6681<br>242-8624<br>242-45<br>721-41   |
| W27, E7, & M2                              | Louisville & Nashville R.R.<br>#11 Government St. Mobile, Ala.       | 205-432-4526 | W.H. Barber*<br>B.H. Voor<br>I.L. Bell  | Mobile, Alabama<br>Mobile, Alabama<br>Mobile, Alabama  | 205-342-9349<br>205-478-6606<br>205-661-41   |
| W7, W8, W9, W10<br>W11, W12                | Metal Service Corporation<br>N. Miro at Indus. Canal                 | 945-1131     | Robert G. Duplantier<br>J.E. Ellis<br>F.J. Delaup<br>Bruce Lohfink<br>George Popovich<br>J.L. Taaffe<br>Franklin Trowbridge<br>Adolphus Johnson | 330 Mehle Avenue, Arabi, La.<br>404 Northline Ave., Metairie, La.<br>6017 Elysian Fields Ave., N.O., La.<br>1418 Bartholomew St., N.O., La.<br>3123 No. Rampart St., N.O., La.<br>104 Virginia Parkway, N.O., La.<br>811 France St., N.O., La.<br>2416 Artillery Dr., Chalmette, La. | 271-5204<br>837-3650<br>288-2451<br>944-59<br>945-67<br>737-8126<br>947-7427<br>271-1142 |
| W20, W28<br>E1 & E8                        | New Orleans - Dept. of Streets<br>City Hall - Civic Center           | 529-4311     | Blaise M. Carriere<br>Carlos J. Christina<br>Charles L. Fisher<br>John F. Ebnicios  | 6628 General Diaz St., N.O., La.<br>1739 N. Dupre St., N.O., La.<br>1014 Aline Street, N.O., La.<br>5370 Charlette Drive, N.O., La.  | 488-51<br>945-8500<br>895-1545<br>282-7770   |
| W5, W5, W17,<br>W26, W27, W33,<br>E10, E12 | New Orleans Public Belt R.R.<br>Suite 1247 - ITM Bldg.               | 525-6282     | D.D. Childress<br>J.G. Cantrell<br>P.A. Webb, Jr.<br>J. Noel Ball<br>J.N. Laigast<br>Yardmaster<br>Yardmaster<br>Yardmaster                     | 27 Helis Dr., Kermer, La.<br>1020 Kermer Ave., Kermer, La.<br>110 Mulberry Dr., Metairie, La.<br>Perlington, Mississippi<br>776 Mercedes Pl., Gretna, La.<br>Pauline Yard<br>Race Yard<br>Cotton Whse. Yard  | 721-71<br>729-2200<br>853-2041<br>601-533-7181<br>366-54<br>"<br>"<br>"                  |
| E9, N2, N3                                 | New Orleans Public Service Inc.<br>317 Baronne St.                   | 529-4545     | Station Watch Supervisor*<br>Claude G. Barker<br>R.P. Maddux<br>Station Watch Supervisor*   | 4709 Hauck Dr., N.O., La.<br>216 N. Jayson Dr., Slidell, La.   | Ext. 347 or 349 529-45<br>242-92<br>1-643-06<br>Ext. 393 529-4545                        |
| M3   | Sewerage & Water Board<br>of New Orleans<br>City Hall - Civic Center | 529-4311     | A.H. Wiebelt<br>D. Dimitrios<br>Wm. Kramer<br>A.V. Lariviere<br>O.C. Patrick  | 4720 Friar Tuck Dr., N.O., La.<br>4731 Nottingham Dr., N.O., La.<br>527 S. Telmachus St., N.O., La.<br>728 Perrin Dr., Arabi, La.<br>1953 N. Johnson St., N.O., La.  | 241-3300<br>241-44<br>482-85<br>271-6548<br>944-5915                                     |
| W21, E2, M1                                | Southern Railway System<br>1205 St. Louis Street                     | 522-9339     | H.C. Mauney<br>R.R. Richwine<br>D.P. Rogers<br>J.P. Forkner   | 1309 Leontine St., N.O., La.<br>2709 Winfred St., Metairie, La.<br>309 Opal St., N.O., La.<br>13056 N. Lemans St., N.O., La.   | 891-09<br>888-91<br>282-7951<br>254-2676   |
| W1, W2                                     | United States Coast Guard<br>Customhouse                             | 527-6228     | Duty Officer<br>Rescue Coordination<br>Captain of the Port  | 4640 Urquhart Street, N.O., La.<br>Customhouse<br>"  | 527-71<br>527-62<br>527-6200   |
| E11  | United States Gypsum Co.<br>5701 Lewis Rd.                           | 241-2020     | P.W. Johnson<br>J.R. Andrews<br>R.L. Welty<br>J.D. Hafford<br>L.M. King<br>A.F. Walters<br>Line Plant   | 4913 Nighthart St., N.O., La.<br>1128 Congress St., N.O., La.<br>4651 Camelot St., N.O., La.<br>2608 Winifred St., N.O., La.<br>13721 Chef Menteur Hwy., N.O., La.<br>2311 New York Street   | 242-4290<br>943-45<br>242-77<br>888-2300<br>254-9353<br>282-4803<br>241-23               |

SCHEDULE B

Gate Type - O - Overhead Roller  
 S - Swing  
 F - Flap  
 L - Stop Log

FLOODGATE DATA

| GATE NO.                       | TYPE | LOCATION  | (See Schedule A)<br>AGENCY OR COMPANY | GATE<br>WIDTH | SILL<br>ELEV. | LOW<br>SILL | ADVANCE<br>CLOSING |
|--------------------------------|------|---|---------------------------------------|---------------|---------------|-------------|--------------------|
| <u>WEST LEVEE IHNC</u>         |      |   |                                       |               |               |             |                    |
| W - 1                          | O    | On U.S. Coast Guard Reservation adjacent to N. end of IHNC Locks  | U.S. Coast Guard                      | 20'           | 3.65          | X           |                    |
| W - 2                          | O    | At N. Robertson St. entrance to U.S. Coast Guard Sta.   | U.S. Coast Guard                      | 20'           | 3.31          |             | X                  |
| W - 3                          | S    | Across N.O.P.B.R.R. tracks for Galvez St. wharf under N. Claiborne Ave. bridge  | N.O.P.B.R.R.                          | 17'           | 5.18          | X           | X                  |
| W - 4                          | O    | At south end of Galvez St. wharf across vehic. access   | Dock Board                            | 20'           | 5.28          |             |                    |
| W - 5                          | S    | At south end of Galvez St. wharf across R.R. access landside  | N.O.P.B.R.R.                          | 17'           | 2.13          |             |                    |
| W - 6                          | O    | At N. Galvez St. entrance to Galvez St. wharf   | Dock Board                            | 30'           | 1.74          |             |                    |
| W - 7                          | F    | 77' X 5'8" Flapgate in Metal Service Co.  | Metal Ser. Co.                        | 77'           | 8.83          |             | X                  |
| W - 8                          | F    | 65' X 3' " " " " " "  | Metal Ser. Co.                        | 65'           | 11.5          |             | X                  |
| W - 9                          | F    | 65' X 3' " " " " " "  | Metal Ser. Co.                        | 65'           | 11.5          |             | X                  |
| W - 10                         | F    | 65' X 3' " " " " " "  | Metal Ser. Co.                        | 65'           | 11.5          |             | X                  |
| W - 11                         | F    | 65' X 3' " " " " " "  | Metal Ser. Co.                        | 65'           | 11.5          |             | X                  |
| W - 12                         | O    | Across R.R. tracks in Metal Service Co.   | Metal Ser. Co.                        | 18'           | 4.35          | X           |                    |
| W - 13                         | O    | Across Dock access road adjacent smoke stack  | Lone Star Cement Co                   | 15'           | 7.29          |             | X                  |
| W - 14                         | O    | Across R.R. & vehic. access road N. side rock stor. bin   | Lone Star Cement Co                   | 20'           | 7.97          |             |                    |
| W - 15                         | O    | Across Dock access road south side Florida Ave. wharf   | Lone Star Cement Co                   | 20'           | 7.65          |             |                    |
| W - 16                         | O    | Across south entrance to Florida Ave. wharf from France Road  | Dock Board                            | 20'           | 6.88          |             |                    |
| W - 17                         | S    | Across N.O.P.B.R.R. tracks north end Florida Ave. wharf   | N.O.P.B.R.R.                          | 17'           | 4.08          |             |                    |
| W - 18                         | O    | Across veh. entrance north end Florida Ave. wharf   | Dock Board                            | 20'           | 7.17          |             |                    |
| W - 19                         | O    | Across R.R. & veh. entrance to site to end of Florida Ave. wharf  | Dock Board                            | 20'           | 4.47          | X           |                    |
| W - 20                         | L    | Across Florida Ave. roadway   | Dept. of Streets<br>City of N.O.      | 20'           | 8.5           |             |                    |
| W - 21                         | L    | Across Sou. R.R. & N.O.P.B.R.R. tracks at Florida Ave.  | Sou. R.R.<br>N.O.P.B.R.R.             | 31'           | 8.2           |             |                    |
| W - 22,<br>23 & 24             |      | To be constructed   |                                       |               |               |             |                    |
| W - 25                         | L    | Across N.O.P.B.R.R. tracks on France Rd. north of Florida Ave.  | N.O.P.B.R.R.                          | 17'           | 4.27          | X           |                    |
| W - 26                         | O    | Across N.O.P.B.R.R. tracks on France Rd. south of Almonaster Ave.   | N.O.P.B.R.R.                          | 17'           | 4.98          | X           |                    |
| W - 27                         | O    | Across L & N R R tracks adjacent to I-10 bridge   | L & N R R<br>N.O.P.B.R.R.             | 32.5'         | 8.32          |             |                    |
| W - 28                         | O    | Across old Gentilly Road under I-10 bridge  | Dept. of Streets                      | 30'           | 5.26          |             |                    |
| W - 29                         | S    | Across R.R. tracks in La. Material Co. yard   | La. Material Co.                      | 22.5'         | 9.76          |             | X                  |
| W - 30                         | S    | Across material access road in La. Material Co. yard  | La. Material Co.                      | 22'           | 11.02         |             | X                  |
| W - 31                         | S    | " " " " " " " " " "   | La. Material Co.                      | 22'           | 10.96         |             |                    |
| W - 32                         | S    | " " " " " " " " " "   | La. Material Co.                      | 22'           | 11.00         |             | X                  |
| W - 33                         | O    | Across N.O.P.B.R.R. tracks on France Rd. at U.S. Hwy. 90  | N.O.P.B.R.R.                          | 17'           | 7.42          |             |                    |
| W - 34                         | O    | Across main entrance to Equit. Equip. Co. from France Road  | Equit. Equip. Co.                     | 20'           | 7.53          |             |                    |
| <u>EAST LEVEE IHNC</u>         |      |   |                                       |               |               |             |                    |
| E - 1                          | L    | Across Florida Ave. roadway   | Dept. of Streets<br>City of N.O.      | 21'           | 8.8           |             |                    |
| E - 2                          | L    | Across Sou. R.R. tracks at Florida Ave.   | Southern R.R.                         | 17'<br>11'    | 8.3           |             |                    |
| E - 3                          | O    | Across ent. to Amer. Marine Corp. yard from Jourdan Rd. approx. 2150 feet south of Almonaster Ave.                    | American Marine Corp. (A.M.C.)        | 20'           | 8.62          |             | X                  |
| E - 4                          | O    | Across main entrance to Amer. Marine Corp. yard and office from Jourdan Rd. approx. 1450 ft. south of Almonaster Ave. | American Marine Corp.                 | 20'           | 8.46          |             |                    |
| E - 5                          | O    | Across R.R. track entrance to A.M.C. yard from Jourdan Rd. approx. 600 feet south of Almonaster Ave.                  | American Marine Corp.                 | 17'           | 8.28          |             |                    |
| E - 6                          | O    | Across north yard entrance to A.M.C. from Jourdan Rd. at Almonaster Ave   | A.M.C.                                | 20'           | 8.92          |             |                    |
| E - 7                          | O    | Across L & N R R tracks adjacent to I-10 bridge   | L & N R R<br>N.O.P.B.R.R.             | 37.25'        | 8.69          |             |                    |
| E - 8                          | O    | Across old Gentilly Road under I-10 bridge  | Dept. of Streets<br>City of N.O.      | 35'           | 8.42          |             |                    |
| E - 9                          | O    | Across NPSI wharf access road from Jourdan Rd. - A.B. Patterson Elec. Generating Station                              | N.O.P.S.I.                            | 15'           | 9.12          |             |                    |
| E - 10                         | O    | Across N.O.P.B.R.R. tracks along Jourdan Road at Dwyer Road   | N.O.P.B.R.R.                          | 17'           | 6.39          |             |                    |
| E - 11                         | O    | Across entrance to U.S. Gypsum Corp. from Jourdan Rd.   | U.S. Gypsum                           | 20'           | 6.76          |             |                    |
| E - 12                         | S    | Across N.O.P.B.R.R. tracks along Jourdan Rd. approx. 550 ft. north of U.S. Gypsum overhead conveyor system            | N.O.P.B.R.R.                          | 17'           | 3.32          |             |                    |
| <u>NORTH LEVEE MRGO</u>        |      |   |                                       |               |               |             |                    |
| N - 1                          | O    | Across dock access road bulk handling facility  | Dock Board                            | 20'           | 9.12          |             |                    |
| N - 2                          | O    | Across access road to water intake structures NPSI Michoud Electric Generating Station                                | NPSI                                  | 20'           | 13.25         |             |                    |
| N - 3                          | O    | " " " " " "   | NPSI                                  | 20'           | 13.25         |             |                    |
| <u>MISCELLANEOUS LOCATIONS</u> |      |   |                                       |               |               |             |                    |
| M - 1                          | L    | 17th St. Canal levee gap at Sou. R.R. near S&WB Pump Sta. No. 6   | Southern R.R.                         |               |               |             |                    |
| M - 2                          | L    | Michoud-South Point levee gap at L & N R R  | L & N R R                             |               |               |             |                    |
| M - 3                          | L    | Florida Ave. levee gap at S&WB Sewerage Treatment Plant R.R. access   | S&WB                                  |               |               |             |                    |

SCHEDULE C

MISCELLANEOUS DATA

A. STORM PROTECTIVE COVERS:

1. Storm covers may be placed in advance at the following locations:
  - a. Harbor Master Office - Orleans Marina
  - b. Lake Vista Community Center - Ground Floor
2. Storm covers will be placed at the last practicable moment on the Seabrook Bridge Control Cab consistent with maintaining navigational safety.
3. Storm covers will not be placed at the New Orleans Lakefront Airport Control Tower Cab until the Airport Director makes the decision. At that time a determination, based on wind conditions, will be made by Field Operations as to whether an installation can be made safely or not.

B. EMERGENCY ELECTRIC GENERATORS:

Electric generators will be installed at the following locations to provide standby power in the event of an electrical failure. These generators are sized to only provide minimum power requirements, not including air conditioning.

- 1 - 10KW Main Office
- 1 - 10KW Bldg. 210 (Field Office)
- 1 - 5KW Bldg. 209 (Field Office)
- 1 - 3KW Orleans Marina
- 1 - 3KW Algiers Field Office

In addition, a unit is borrowed from the Louisiana National Guard to be installed at the New Orleans Lakefront Airport.

C. SANDBAG INSTALLATION LOCATIONS:

Emergencies will decide the final locations of sandbag installations, but certain locations as listed below should have constant consideration as dictated by storm path, security of winds, and availability of personnel.

1. East side Orleans Canal levee depressions at vaults near Lakeshore Drive
2. East and West sides of Administration Bldg.
3. Orleans Marina Parking Area
4. Downman Road Underpass at Lakeshore Drive
5. Topaz Street Hump at Lakeshore Drive
6. Lake Avenue and Lakeshore Drive
7. Gentilly Blvd. Bridge at London Ave. Canal

D. AMPHIBIOUS VEHICLE STANDBY LOCATIONS:

1. Station One (1) No. 604 Amphib at New Orleans Lakefront Airport.
2. Station One (1) No. 1301 Amphib at West Bank Field Office.
3. Move the Four (4) remaining units to the Vehicle Deployment Area, leaving units on both trailers for dispatching to areas as directed.