
*Response of New Orleans Hurricane
Protection in Katrina*

Paul F. Mlakar, Ph.D., P.E.

23 January 2006



- **Introduction**
- **Overview of Protection**
- **Levee at Entergy Plant**
- **Inner Harbor Navigation Canal Floodwall**
- **17th Street Canal Floodwall**
- **Study Progress and Plans**



Katrina Flooding



Corps of Engineers' Missions

Mission	Team
Rescue and Recover	Task Force Hope
Study Performance	Interagency Performance Evaluation Taskforce
Reconstruct to Authorized Level	Task Force Guardian
Study Higher Level	Future Planning Study



Ephemeral Data Collection

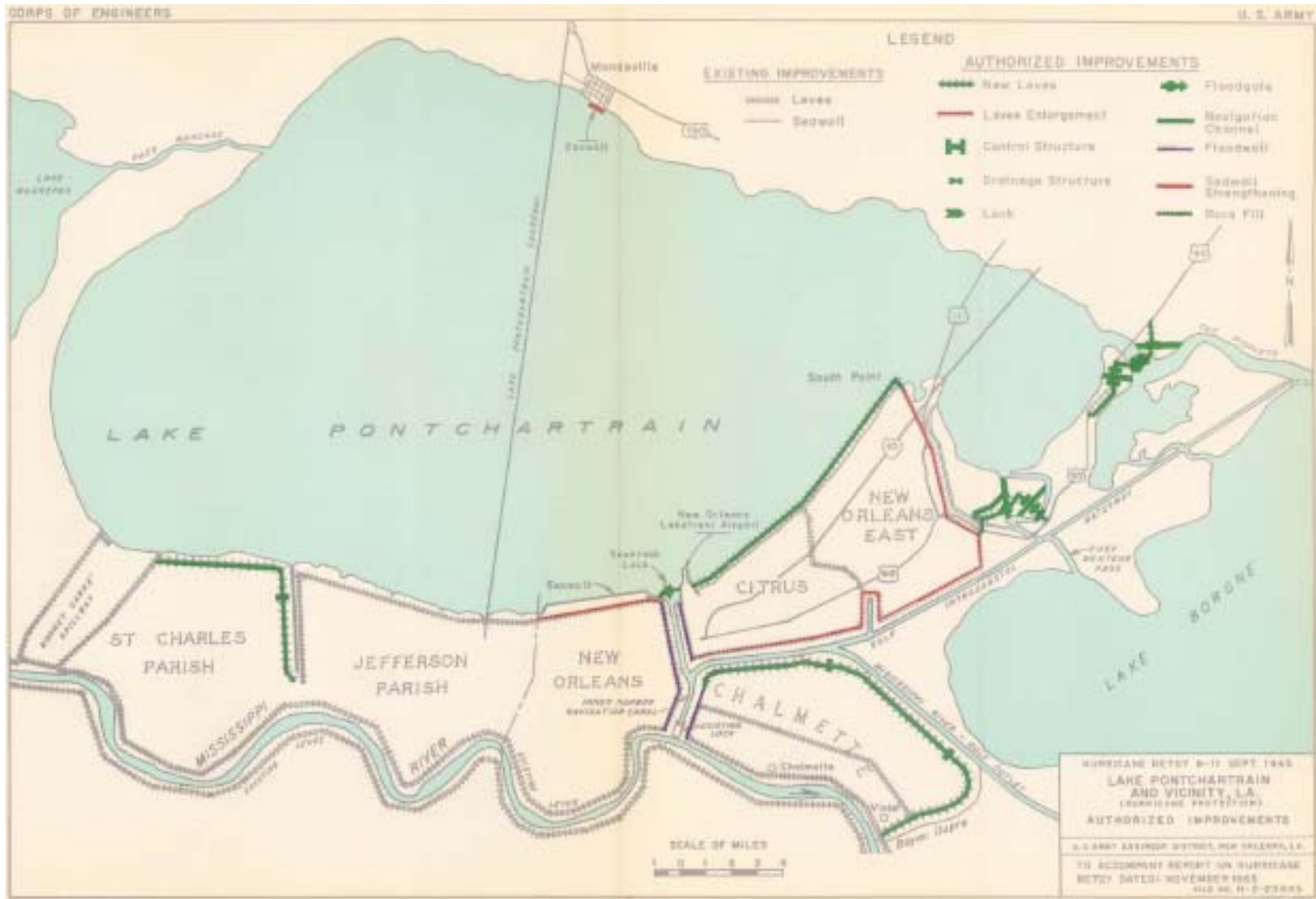
- **29Aug** **Katrina Strikes**
- **1Sep** **Corps Begins Study**
- **24Sep** **Rita Strikes**
- **26Sep** **ERDC Deploys**
- **28Sep** **ASCE Joins**
- **20Oct** **NSF Joins**
- **20Oct** **LADOTD Joins**



The Crescent City



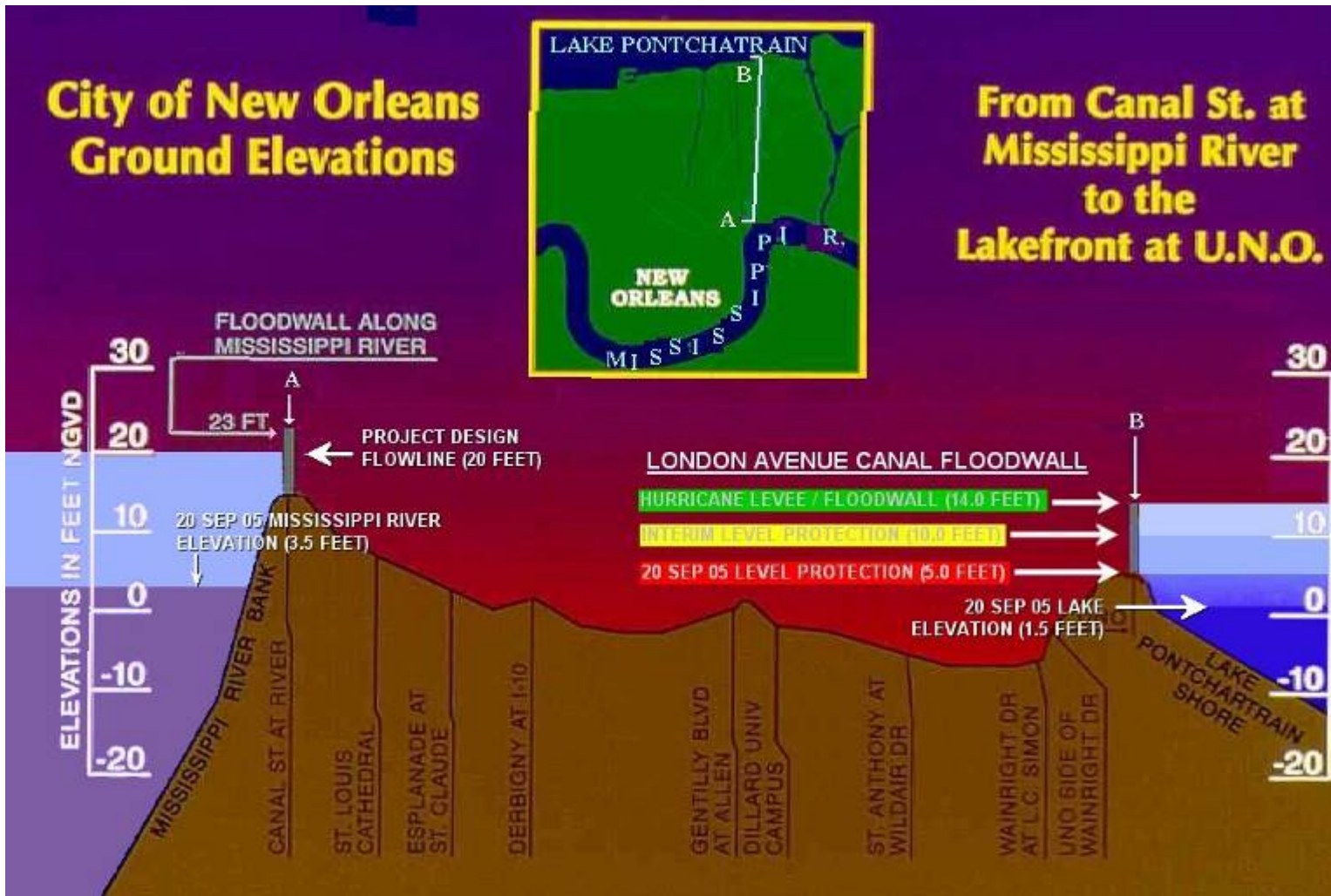
1965 Protection



2005 Protection



Cross Section



Michoud Entergy Plant



Overtopping



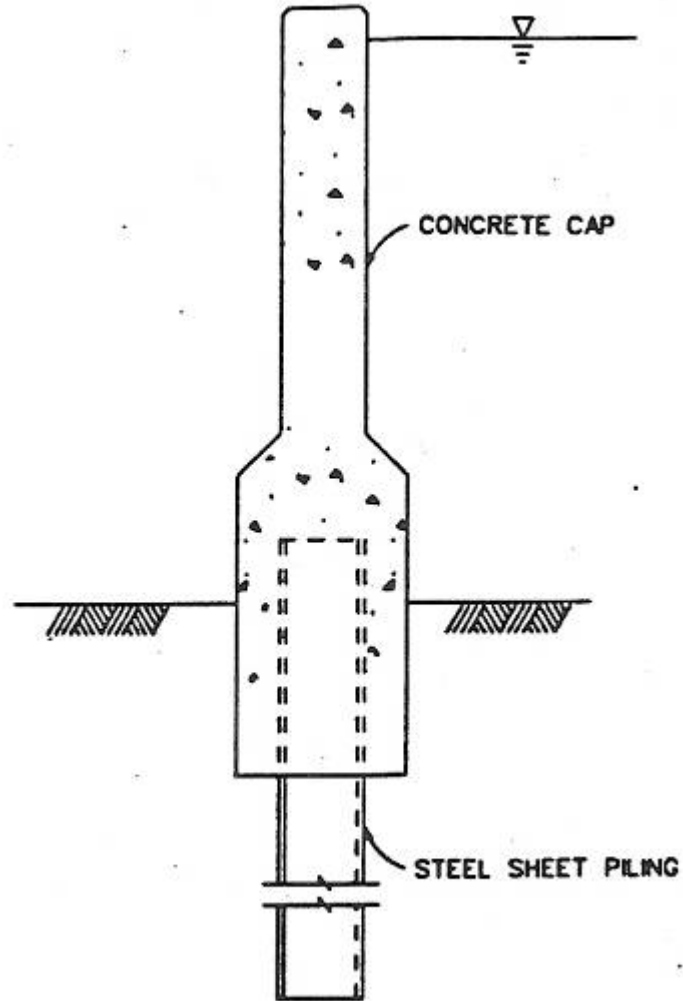
Post Katrina Condition



Inner Harbor Navigation Canal



I-wall Section



Overtopping Breach



Floodwall in Breach



Adjacent Floodwall



17th Street Drainage Canal



Emergency Closure



Soil Block Movement



Breached Monoliths



Interagency Performance Evaluation Taskforce

- Protection System
- Storm
- Performance
- Consequences
- Risk



- **29Aug** **Hurricane Katrina**
- **26Sep** **Data Collection**
- **7Nov** **Initial Meeting**
- **9Jan** **30% Review**
- **9Mar** **60% Review**
- **9May** **90% Review**
- **1Jun** **Final Report**



- **ASCE**
 - **Approach and methods**
 - **Tactical validation along the way**
 - **Findings**
 - **Full scope including consequence and risk**
- **National Research Council**
 - **Strategic oversight**
 - **Independent review of findings**
 - **Synthesis for public and government agencies**
 - **Physical performance only**



One Team, Relevant, Ready, Responsive and Reliable

