

## January

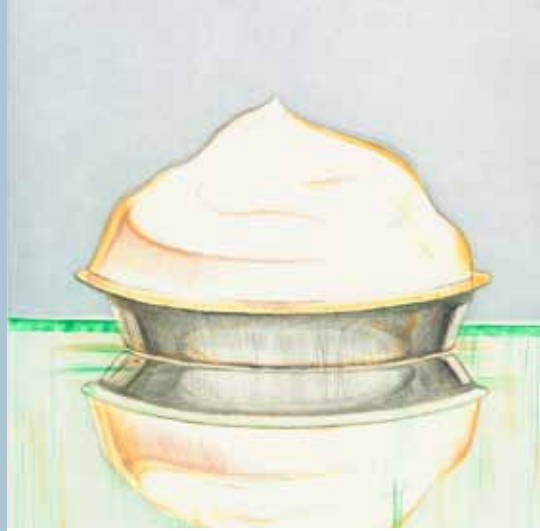
- 5 **Saturday | 10:30 | ages 7 and up**  
Film/Surreal Shorts
- 6 **Sunday | 11:30 | ages 7 and up**  
Film/Surreal Shorts
- 12 **Saturday | 11:30 | 1:30 | ages 8 – 11**  
Artful Conversations/See-Wonder-Sketch
- 13 **Sunday | 11:30 | 1:30 | ages 8 – 11**  
Artful Conversations/See-Wonder-Sketch
- 19 **Saturday | 10:30 | 11:30 | 12:30 | 1:30 | ages 4 – 7**  
Stories in Art/Pablo Picasso
- 20 **Sunday | 11:30 | 12:30 | 1:30 | 2:30 | ages 4 – 7**  
Stories in Art/Pablo Picasso
- 26 **Saturday | 10:30 | 11:30 | 12:30 | 1:30 | ages 4 – 7**  
Stories in Art/Pablo Picasso
- 27 **Sunday | 11:30 | 12:30 | 1:30 | 2:30 | ages 4 – 7**  
Stories in Art/Pablo Picasso
- 27 **Sunday | 1:00 | ages 12 – 14**  
Family Workshop/Color, Line, Light:  
Watercolor Techniques

## February

- 2 **Saturday | 10:30 | ages 5 and up**  
Film/Wintery Mix
- 3 **Sunday | 11:30 | ages 5 and up**  
Film/Wintery Mix
- 3 **Sunday | 1:00 | ages 12 – 14**  
Family Workshop/Color, Line, Light:  
Watercolor Techniques
- 9 **Saturday | 11:30 | 1:30 | ages 8 – 11**  
Artful Conversations/See-Wonder-Haiku
- 10 **Sunday | 11:30 | 1:30 | ages 8 – 11**  
Artful Conversations/See-Wonder-Haiku
- 10 **Sunday | 1:00 | ages 12 – 14**  
Family Workshop/Color, Line, Light:  
Watercolor Techniques
- 16 **Saturday | 10:30 | 11:30 | 12:30 | 1:30 | ages 4 – 7**  
Stories in Art/Romare Bearden
- 17 **Sunday | 11:30 | 12:30 | 1:30 | 2:30 | ages 4 – 7**  
Stories in Art/Romare Bearden
- 17 **Sunday | 1:00 | ages 12 – 14**  
Family Workshop/Color, Line, Light:  
Watercolor Techniques
- 23 **Saturday | 10:30 | 11:30 | 12:30 | 1:30 | ages 4 – 7**  
Stories in Art/Romare Bearden
- 24 **Sunday | 11:30 | 12:30 | 1:30 | 2:30 | ages 4 – 7**  
Stories in Art/Romare Bearden
- 24 **Sunday | 1:00 | ages 12 – 14**  
Family Workshop/Color, Line, Light:  
Watercolor Techniques

## March

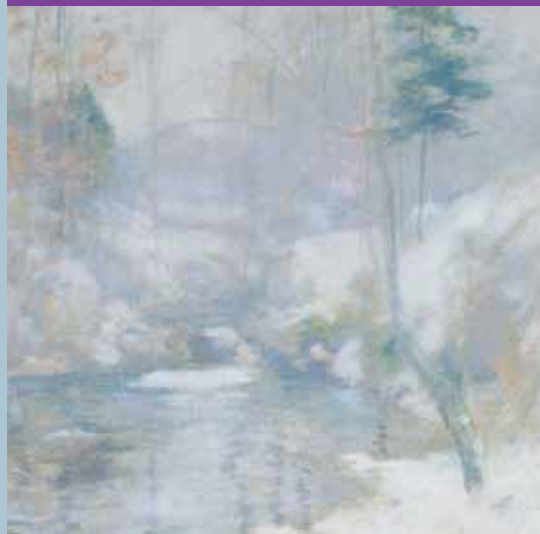
- 9 **Saturday | 11:30 | 1:30 | ages 8 – 11**  
Artful Conversations/See-Wonder-Connect
- 10 **Sunday | 11:30 | 1:30 | ages 8 – 11**  
Artful Conversations/See-Wonder-Connect
- 16 **Saturday | 10:30 | 11:30 | 12:30 | 1:30 | ages 4 – 7**  
Stories in Art/René Magritte
- 16 **Saturday | 11:30 | ages 10 and up**  
Film/Cinderella Moon
- 17 **Sunday | 11:30 | ages 10 and up**  
Film/Cinderella Moon
- 17 **Sunday | 11:30 | 12:30 | 1:30 | 2:30 | ages 4 – 7**  
Stories in Art/René Magritte
- 23 **Saturday | 10:30 | 11:30 | 12:30 | 1:30 | ages 4 – 7**  
Stories in Art/René Magritte
- 24 **Sunday | 11:30 | 12:30 | 1:30 | 2:30 | ages 4 – 7**  
Stories in Art/René Magritte



Winter 2013

# NGA kids

Family Activities at the  
National Gallery of Art



front, top: Wayne Thiebaud, *Meringue* (detail), 1995, color aquatint with drypoint on Somerset White Textured paper, National Gallery of Art, Washington, Gift of David A. Blanton III

front, bottom: John Henry Twachtman, *Winter Harmony* (detail), c. 1890/1900, oil on canvas, National Gallery of Art, Washington, Gift of the Avalon Foundation

front, middle: Film still from *Cinderella Moon*, scheduled to be shown on March 1, 17

## film program

With an exciting selection of classics and recently produced foreign and domestic films, the National Gallery's Film Program for Children and Teens offers innovative film programming, enhances visitor enjoyment of the Gallery's collections and exhibitions, and fosters an understanding of film as an art form. Selected to appeal to both youth and adult audiences, age recommendations assist parents in selecting the most emotionally and intellectually stimulating films for their children. Feature films are in English unless otherwise noted.

All film programs are shown in the East Building Auditorium. Seating is offered on a first-come, first-served basis. Groups are welcome. Food and drink are not permitted. Programs are free. No advance registration.

### Surreal Shorts

**Saturday, January 5 | 10:30 am**

**Sunday, January 6 | 11:30 am**

**Ages 7 and up**

Stretch your imagination and let the ordinary become extraordinary with this series of animated shorts. Oscar award-winning *The Lost Thing* (Andrew Ruhemann and Shaun Tan, Australia, U.K., 2010) follows a boy on a journey to find a home for a strange, misplaced object. When he meets with indifference from everyone in a busy industrial world, his determination to find acceptance and belonging becomes earnest. Other films include *Codswallop* (Greg and Myles McLeod, U.K., 2008), *Luminaris* (Juan Pablo Zaramella, Argentina, 2011), and *The Goat That Ate Time* (Lucinda Schreiber, Australia, 2007). Approximately 55 minutes.

### Wintry Mix

**Saturday, February 2 | 10:30 am**

**Sunday, February 3 | 11:30 am**

**Ages 5 and up**

Join us for heart-warming animated shorts celebrating winter's frosty fun. *The Gruffalo's Child* (Uwe Heidschötter and Johannes Weiland, United Kingdom/Germany, 2011), the sequel to the award-winning 2009 film *The Gruffalo*, turns the tables as a young Gruffalo heads into the wintry woods in search of a big, bad mouse. *The Snowy Day* (Weston Woods, 2005, U.S.) based on the 1963 Caldecott Medal-winning book by Ezra Jack Keats, will be shown with *Carrot on the Beach* (Pärtel Tall, Estonia, 2008), *Spot and Splodge in a Snowstorm* (Uzi and Lotta Geffenblad, Sweden, 2008), and *The Girl and the Fox* (Tyler J. Kupferer, U.S., 2011). Approximately 60 minutes.

### Cinderella Moon

(Richard Bowen, China, 2010, 96 minutes)

**Saturday, March 16 | 11:30 am**

**Sunday, March 17 | 11:30 am**

**Ages 10 and up**

Inspired by an eighth-century Chinese fable, *Cinderella Moon* tells the story of Mei Mei, a beautiful and talented young potter, who lives a quiet life in the mountains. Nearly ten years after her mother died in childbirth with a younger sibling, Mei Mei suffers another tragic loss when her father is swept into a river. Eager to be rid of her, Mei Mei's stepmother engages a matchmaker to sell Mei Mei into marriage while her own daughter, Big Sister, attends the Full Moon Dance—an important rite of passage. Meanwhile, the region's young king is on a quest to balance the sun and moon, which have become strangely out of sync. The kingdom anxiously awaits a resolution and holds onto the hope that harmony can be restored. How will Mei Mei play a role in this? Filmed primarily in Yunnan province, China, *Cinderella Moon* features visually stunning cinematography and costumes. *English-language version. Shown in collaboration with the Environmental Film Festival in the Nation's Capital.*

### To receive monthly announcements

**about upcoming programs, subscribe to the Gallery's e-newsletter for families:**

<http://subscribe.nga.gov>.

## CHILDREN'S AUDIO TOUR: WEST BUILDING HIGHLIGHTS

**Ages 7–12**

Explore fifty paintings in the West Building with an audio tour designed especially for children ages 7 to 12. Handheld digital audio players allow children the freedom to move at their own pace and choose from a list of works by such artists as Leonardo da Vinci, Rembrandt van Rijn, Peter Paul Rubens, Claude Monet, and Winslow Homer. The audio tour is available free of charge at the Acoustiguide desk in the West Building Rotunda. For group reservations for audio tours (ten or more), call (202) 842-6592. The audio tour, with images, is also available on the Gallery's website at <http://www.nga.gov/education/timetravell/index.htm>.

**The National Gallery of Art Children's Audio Tour is made possible through the generous support of the MSST Foundation.**

## family workshops

**Ages 12–14**

The winter Family Workshops are designed exclusively for "tweens," participants ages 12 to 14. Taught by artists and museum educators, each two-and-a-half-hour workshop includes an interactive tour in the galleries followed by a hands-on studio session. See the complete listing below for topics, dates, and times. All workshops begin in the Education Studio, located on the East Building Concourse. Participants must be dropped off and picked up by a designated parent or guardian. Workshops are free, but preregistration is required.

**Registration for all winter workshops begins online at noon on Wednesday, January 9:**  
<http://www.nga.gov/programs/family.htm>.

**Color, Line, Light: Watercolor Techniques**  
**Sundays, January 27 and February 3, 10, 17, 24**  
**1:00–3:30 pm**

Explore the special exhibition *Color, Line, Light: French Drawings and Watercolors from Delacroix to Signac* and be inspired to create your own series of watercolor sketches. Participants will learn how French artists used watercolor to depict a variety of subjects, while experimenting with watercolor materials and techniques in the studio.



## WINTER DROP-IN PROGRAMS

Our winter programs are organized into two series—*Stories in Art* (ages 4–7) and *Artful Conversations* (ages 8–11)—designed to engage children and adults with works of art in the galleries.

These free drop-in programs are designed for individual families, and we cannot accommodate groups. Space is limited. There is no advance registration; participation is on a first-come, first-served basis. As a courtesy to the group, we will only accept sign-in for children in the age ranges listed. Program times, dates, and topics follow. For information, call (202) 789-3030.

## stories in art

Ages 4–7

This series of programs uses storytelling to introduce children to works of art. Led by museum educators, each program includes reading a children's book, looking at one work of art in the galleries, and completing a simple hands-on activity. The winter series explores works in the East Building while the summer series features works in the West Building. Approximately 60 minutes.

Sign-in for the Winter Story Series will take place in the East Building Atrium, beginning at 10:00 am on Saturdays and at 11:00 am on Sundays, and will continue until all spaces are filled.

Family and Teen Programs are made possible in part by the generosity of the Prince Charitable Trusts.

## WINTER STORY SERIES: INVESTIGATE MODERN AND CONTEMPORARY ART

How do you investigate a work of art? Learn to make careful observations, analyze artists' choices, ask questions, and use your imagination while exploring works of art in the East Building. This winter, three imaginative stories are paired with three selections from the collection. After examining each artist's technique, you will experiment with diverse media to create your own works of art. You will receive a notebook to accompany the Winter Story Series and a stamp for each program attended. Collect all three stamps to receive a prize!

### Investigate: Pablo Picasso

*When Picasso Met Mootisse* by Nina Laden

Saturdays, January 19 and 26

10:30 am | 11:30 pm | 12:30 pm | 1:30 pm

Sundays, January 20 and 27

11:30 am | 12:30 pm | 1:30 pm | 2:30 pm

Explore the geometric shapes and bold colors of Pablo Picasso's cubist paintings.

### Investigate: Romare Bearden

*My Hands Sing the Blues: Romare Bearden's Childhood Journey* by Jeanne Walker Harvey, illustrated by Elizabeth Zunon

Saturdays, February 16 and 23

10:30 am | 11:30 pm | 12:30 pm | 1:30 pm

Sundays, February 17 and 24

11:30 am | 12:30 pm | 1:30 pm | 2:30 pm

Discover how Romare Bearden pieced together his creative works of art using everyday materials with strong patterns and textures.

### Investigate: René Magritte

*Magritte's Marvelous Hat* by D. B. Johnson

Saturdays, March 16 and 23

10:30 am | 11:30 pm | 12:30 pm | 1:30 pm

Sundays, March 17 and 24

11:30 am | 12:30 pm | 1:30 pm | 2:30 pm

Step inside René Magritte's imaginative world and explore the art of creating illusion.

Program cancellation is rare, but in cases of inclement weather, please call (202) 789-3030 to check the status of a program.

## artful conversations

Ages 8–11

Designed for children and adults to participate in together, this series of programs uses observation and discussion to explore works of art in the collection. Led by museum educators, each program looks at one work of art in the galleries, accompanied by activities such as sketching, writing poetry, or making connections between works of art. Approximately 70 minutes.

Sign-in for Artful Conversations will take place in the East Building Atrium, beginning at 11:00 am on Saturdays and Sundays, and will continue until all spaces are filled.

## ARTFUL CONVERSATIONS WINTER SERIES:

Many museum visitors spend only seconds looking at a work of art. Find out what you can discover when you spend an hour exploring one work of art! Bring your observation skills, imagination, curiosity, and creativity to these guided discussions that delve deep into masterpieces from the Gallery's collection. Children who attend all three programs will receive a prize.

### See-Wonder-Sketch

Saturday, January 12 | 11:30 am | 1:30 pm

Sunday, January 13 | 11:30 am | 1:30 pm

### See-Wonder-Haiku

Saturday, February 9 | 11:30 am | 1:30 pm

Sunday, February 10 | 11:30 am | 1:30 pm

### See-Wonder-Connect

Saturday, March 9 | 11:30 am | 1:30 pm

Sunday, March 10 | 11:30 am | 1:30 pm

above: Romare Bearden, *Tomorrow I May Be Far Away* (detail), 1967, collage of various papers with charcoal and graphite on canvas, National Gallery of Art, Washington, Paul Mellon Fund © Romare Bearden Foundation / Licensed by VAGA, New York, NY

back: Camille Pissarro, *Boulevard des Italiens, Morning, Sunlight*, (detail), 1897, oil on canvas, National Gallery of Art, Washington, Chester Dale Collection

National Gallery of Art  
Sixth Street & Constitution Avenue NW  
Washington, DC

*Mailing address*

Department of Teacher, School,  
and Family Programs  
Division of Education  
National Gallery of Art  
2000B South Club Drive  
Landover, MD 20785

Presorted  
First-Class Mail  
US POSTAGE  
PAID  
Rochester, NY  
Permit No. 357

## Welcome to NGAkids!

This quarterly publication includes a calendar of events for kids at the National Gallery of Art, with program descriptions and dates.

Please send your comments or suggestions to [family@nga.gov](mailto:family@nga.gov).



Winter 2013

# NGAkids

Family Activities at the  
National Gallery of Art

## kids' stuff

### Upcoming Activities

Would you like to know the schedule of Family Programs before you receive this brochure? Check our website regularly for the most up-to-date calendar: [www.nga.gov/programs/family.htm](http://www.nga.gov/programs/family.htm)

### Reminder

Events and street-closings occur year-round on the Mall. Please allow sufficient time to get to the Gallery. The nearest Metrorail stops are Judiciary Square on the Red Line, Archives–Navy Memorial–Penn Quarter on the Yellow/Green Lines, and Smithsonian on the Blue/Orange Lines. Metrobus stops are located on Fourth Street and Seventh Street NW.

### Subscribe

Subscribe to the Gallery's e-newsletter for family, teen, and other programs: <http://subscribe.nga.gov>.